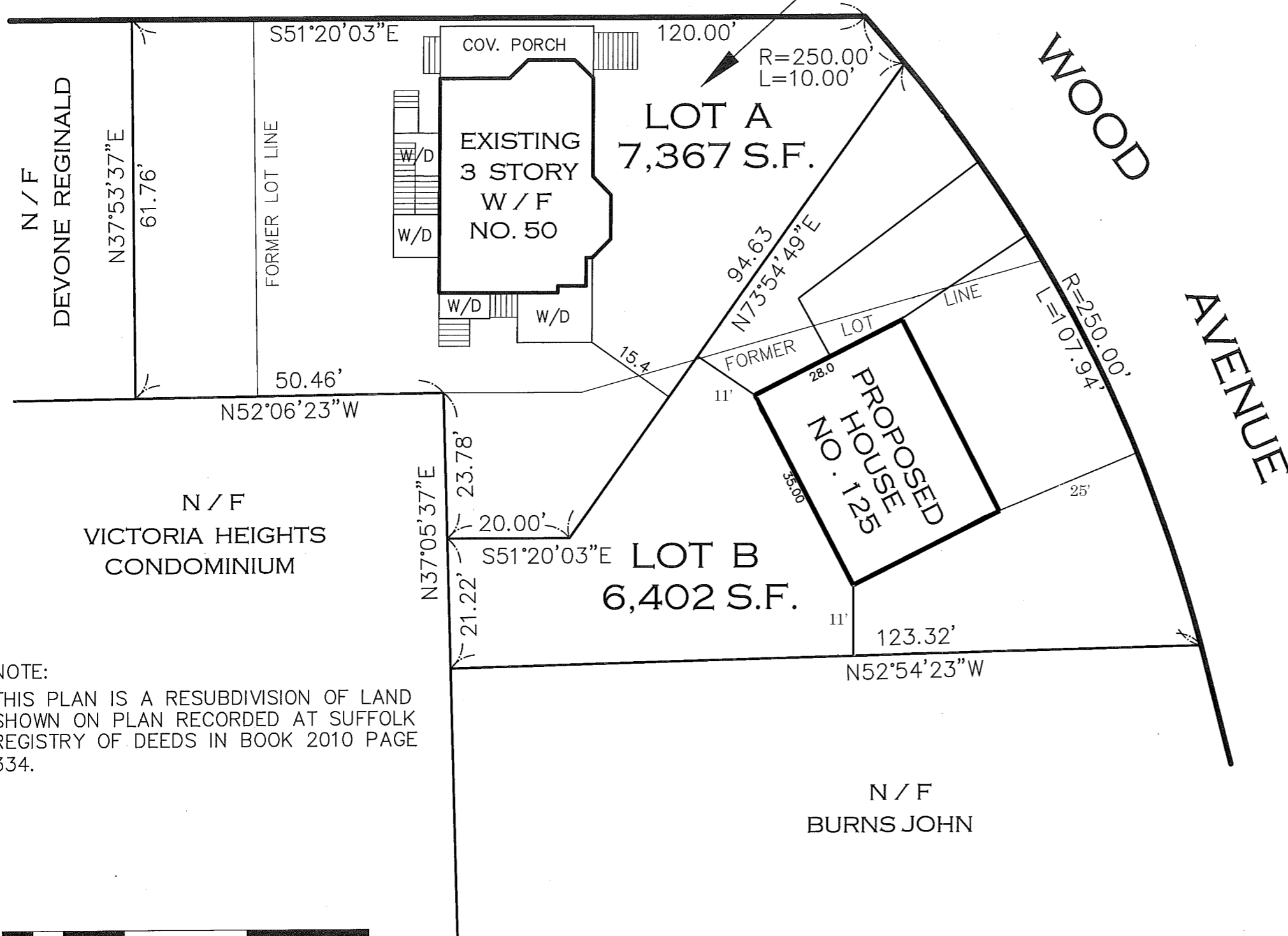
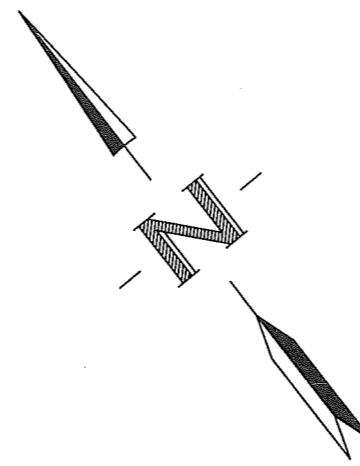


ROANOKE ROAD

* LOT A IS INCREASING TO 7,367 S.F.



NOTE:
 THIS PLAN IS A RESUBDIVISION OF LAND SHOWN ON PLAN RECORDED AT SUFFOLK REGISTRY OF DEEDS IN BOOK 2010 PAGE 334.



I HEREBY CERTIFY:
 ● THAT THIS PLAN WAS PREPARED IN ACCORDANCE WITH THE RULES AND REGULATIONS OF THE REGISTERS OF DEEDS.

Stephen P. Desroche
 STEPHEN P. DESROCHE



SUBDIVISION PLAN OF 50 ROANOKE ROAD IN BOSTON (H.P.), MASS.

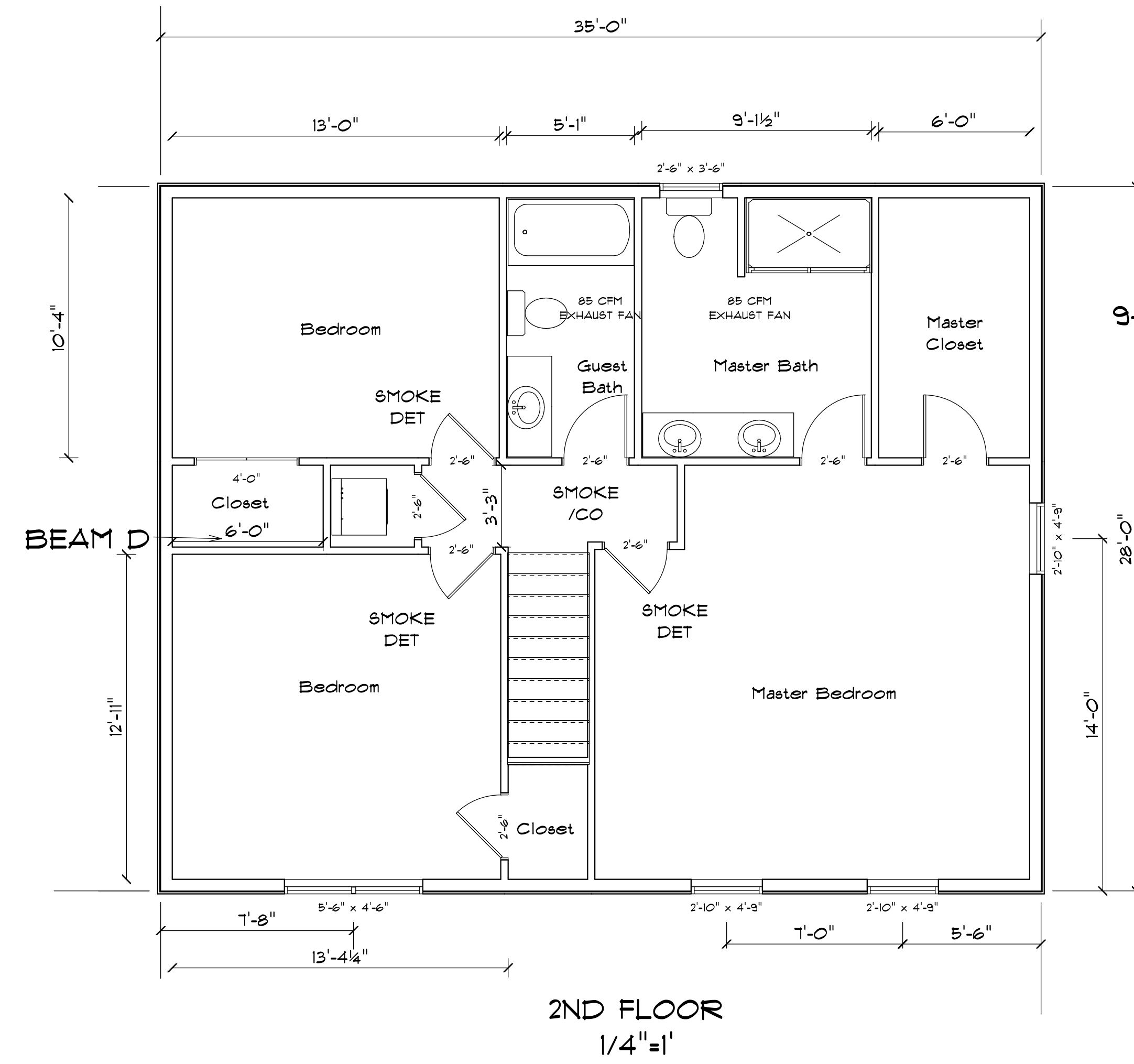
PREPARED FOR:
 JAVIER PICO

PREPARED BY:
 NEPONSET VALLEY SURVEY ASSOC., INC.
 95 WHITE STREET
 QUINCY, MA 02169

SCALE:
 1"=20'

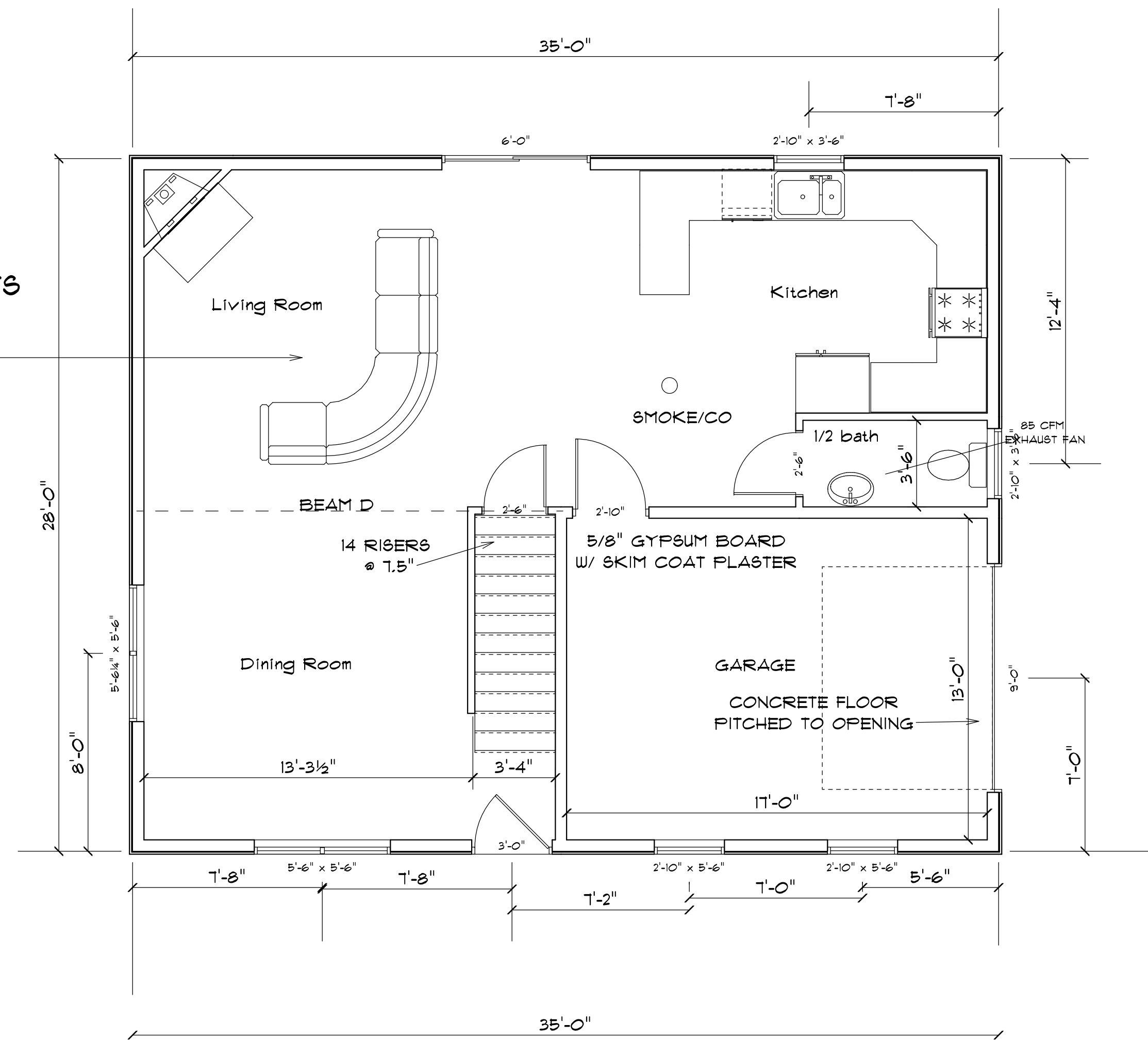
DATE:
 JANUARY 22, 2013
 APRIL 11, 2013





2ND FLOOR
1/4" = 1'

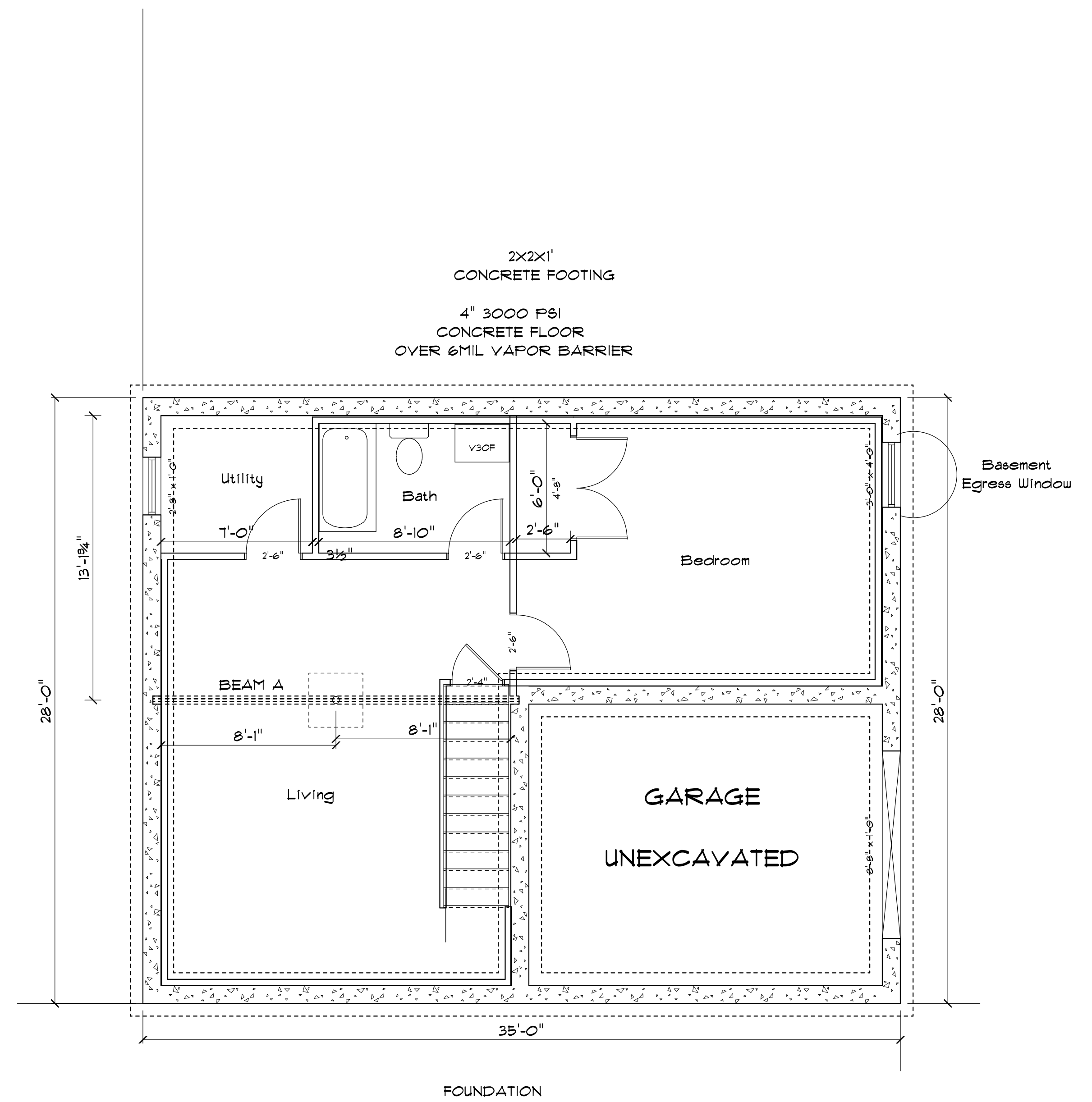
9-1/2" JOISTS
16" O.C.



FIRST FLOOR
1/4" = 1'

2X2X1'
CONCRETE FOOTING

2X2X1'
CONCRETE FOOTING
4" 3000 PSI
CONCRETE FLOOR
OVER 6MIL VAPOR BARRIER



Basement
Egress Window

FOUNDATION