

Fenway Transportation Action Plan Public Meeting

March 24th, 2025

Introductions + Tonight's Format



Sam Roy (she/her/hers)
Sr. Transportation Planner II
Planning Dept, City of Boston



Naoise McDonnell (he/him/his)
Community Engagement Manager
Planning Dept, City of Boston

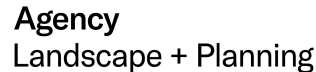


Charlotte Fleetwood (she/her/hers)
Senior Planner
Streets, City of Boston

Key Agency Coordination:

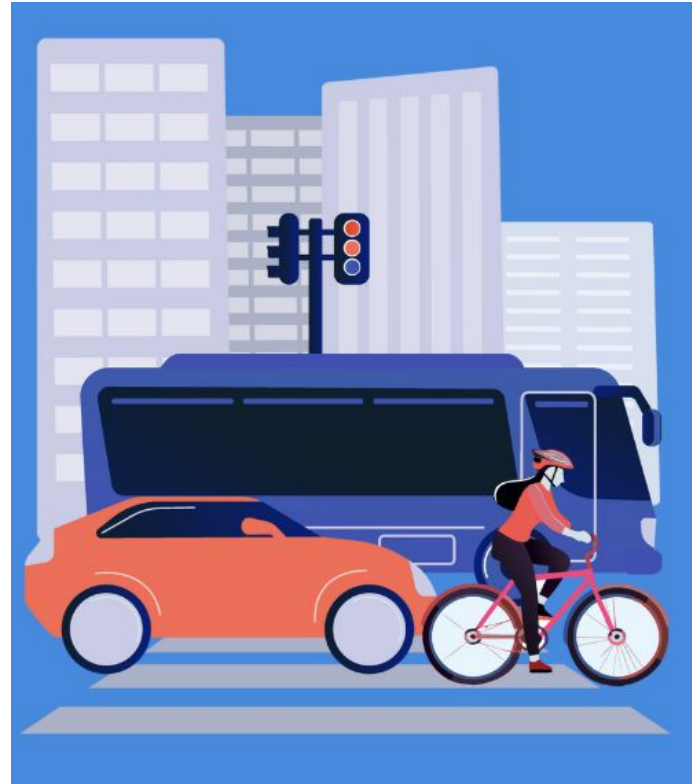
- Led by Boston Planning Department and Streets
- Coordinated closely with:
 - MBTA
 - DCR
 - MassDOT

Project Supported by



Agenda

- Introductions (5 min)
- StoryMap Key Sections/Findings (20 min)
- Break Out Groups (45 min)
- Small Group Share-back (10 min)
- Next Steps (5 min)



StoryMap

Now, we will take a quick scroll through the [StoryMap](#)



City of Boston
Planning Department

Collection

Fenway Transportation Action Plan

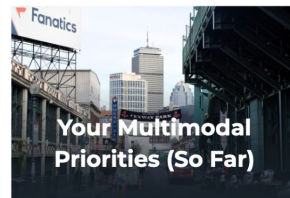
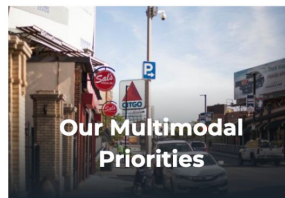
Get started

Welcome to the Fenway Transportation Action Plan, a joint effort of the City of Boston's Planning Department and Transportation Department.

The Action Plan will guide changes to three Design Areas: Kenmore Square, Brookline Avenue, and Van Ness Street / Ipswich Street. We'll also introduce a westward extension of the Roxbury-Fenway Connector Green Links project.

We've launched this StoryMap to introduce the Action Plan, our priorities moving forward, and what you've told us so far. Click the images to learn more and provide your feedback.

We're glad you're here and we're looking forward to working with you!

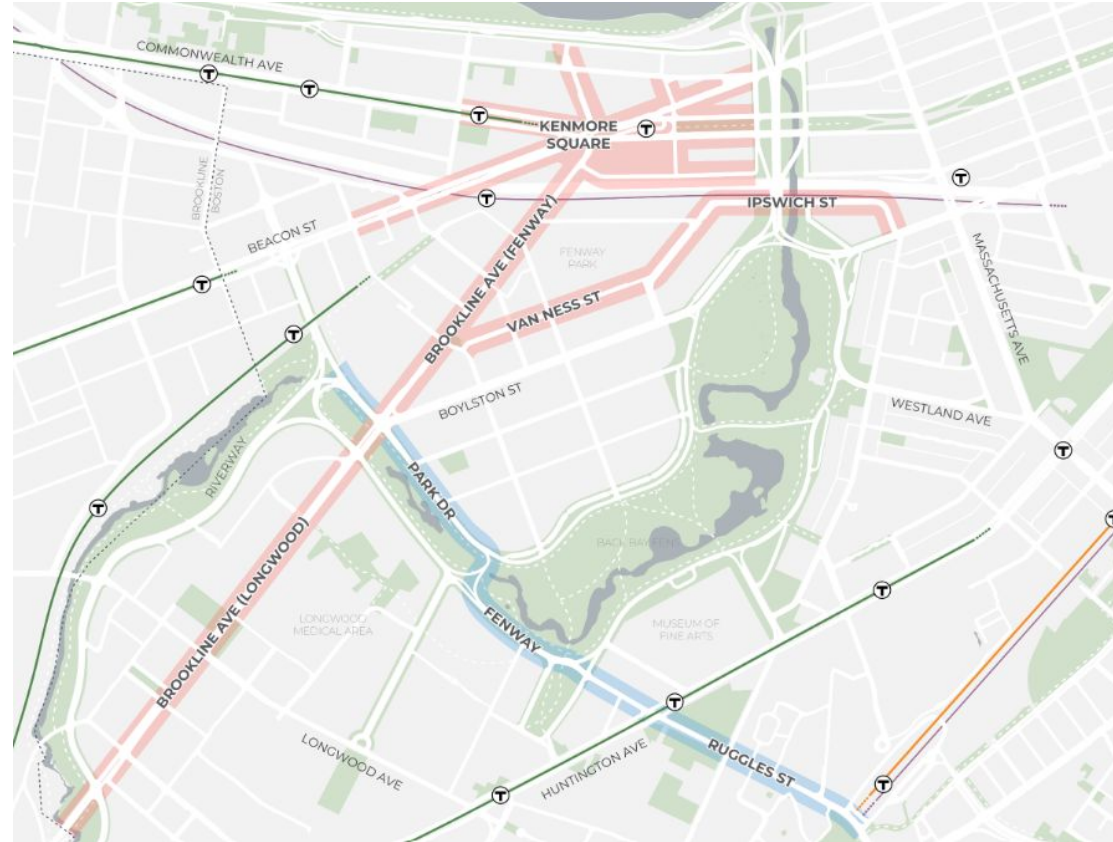


What is the Transportation Action Plan?

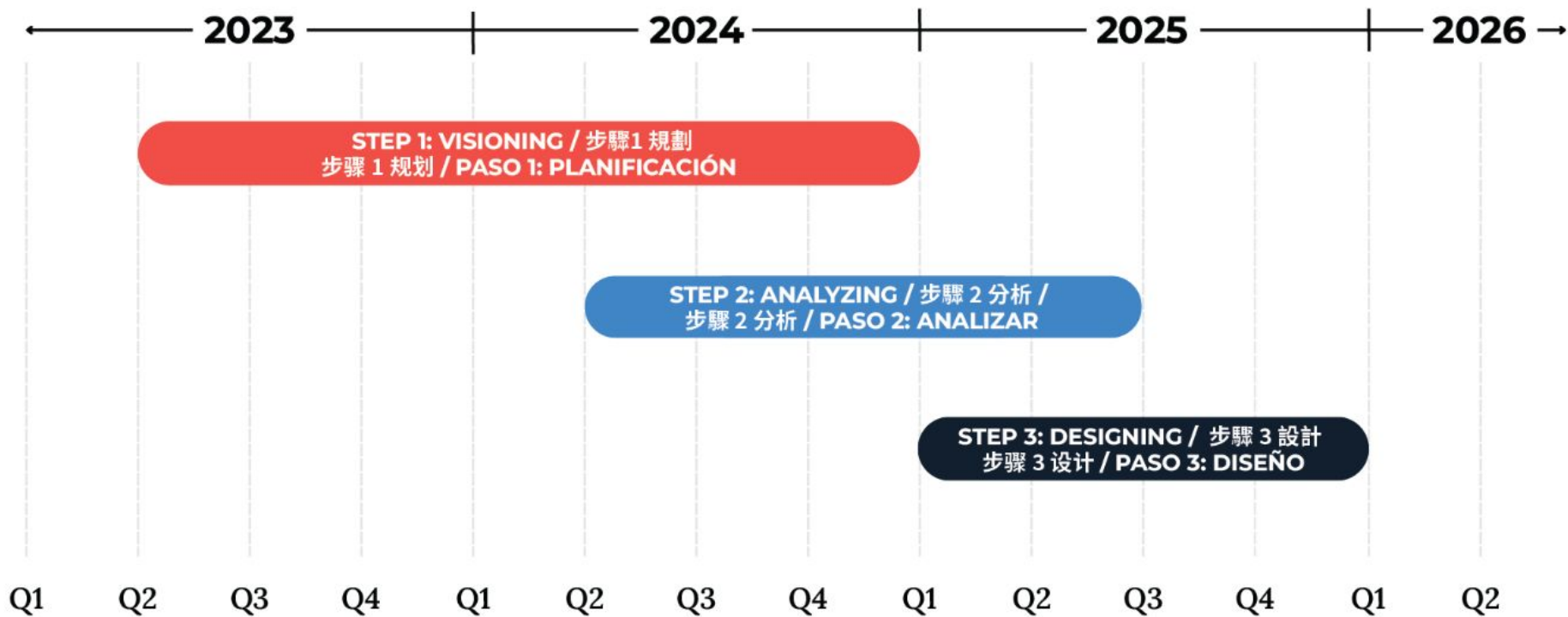
It is a neighborhood plan with a regional approach to analyzing Fenway's transportation system.

This plan will make recommendations to **coordinate improvements** around three main design areas:

- Kenmore Square
- Brookline Ave
- Van Ness / Ipswich St
- *Additionally, the Roxbury-Fenway Connector*



Project Timeline

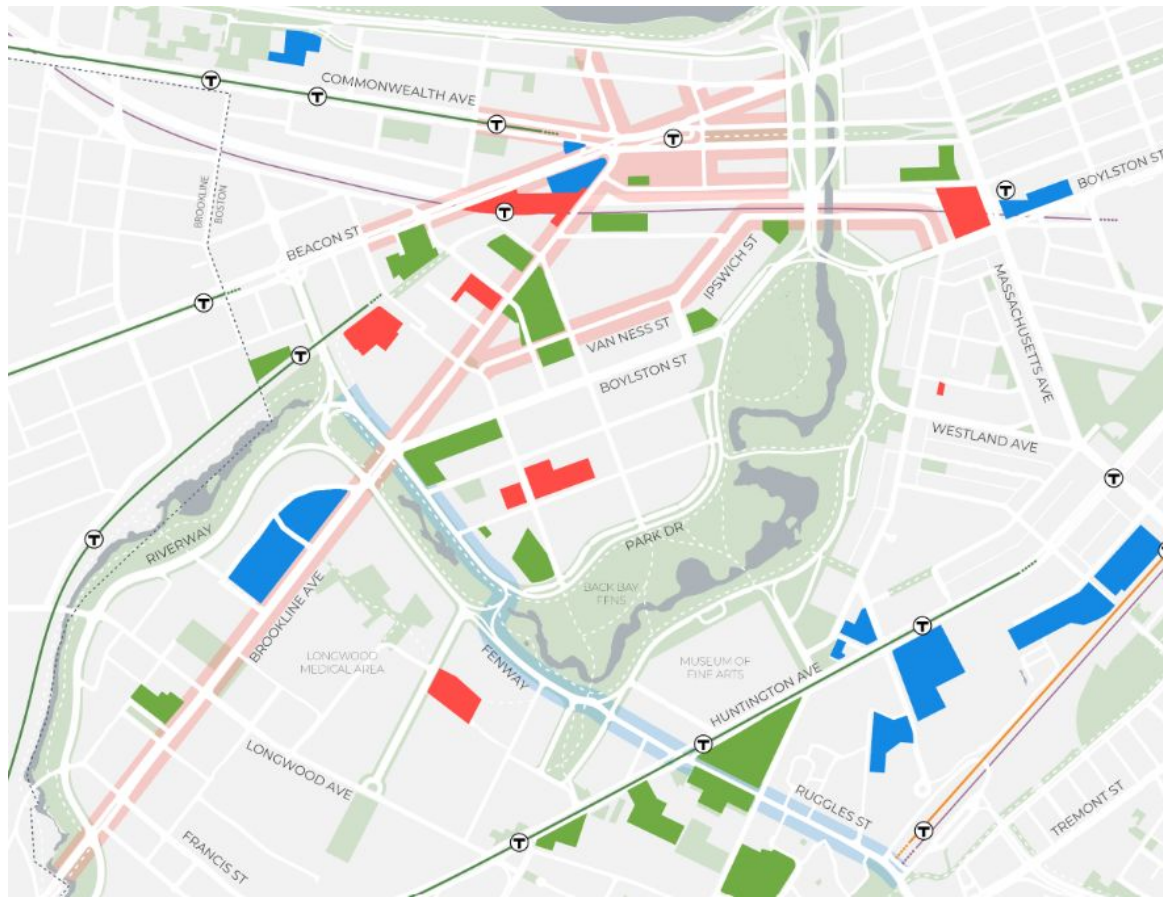


Why now?

High levels of development are planned or anticipated in the Fenway area.

ARTICLE 80 DEVELOPMENT STATUS 第80条规则开发状况 | 第80條開發狀態 | ESTADO DEL DESARROLLO DEL ARTÍCULO 80

-  Development under review
正在审查的开发项目 | 審查中的開發案 | Desarrollo en revisión
-  Board approved development
委员会批准的开发项目 | 董事會核准的開發案 |
Desarrollo aprobado por el Consejo
-  Development under construction
在建开发项目 | 興建中的開發案 | Desarrollo en construcción
-  Design Area
设计区域 | 設計區域 | Área de diseño
-  Roxbury-Fenway Connector
Roxbury-Fenway连接线 | Roxbury-Fenway連接道 |
Conector Roxbury-Fenway



What will this plan accomplish?

- The Fenway Transportation Action Plan will **coordinate developer mitigation commitments** into street, sidewalk, and public realm designs that mitigate for growth.
- The vision is **to create safer, more comfortable, and more reliable ways** to walk, bike, or take transit in and through Fenway.
- The plan will analyze the future network to understand changes needed to accommodate neighborhood growth and accommodate future transportation network needs
- Recommendations will be focused on the **three main design areas**
 - Kenmore Square
 - Brookline Ave
 - Van Ness / Ipswich St
 - *Additionally, the Roxbury-Fenway Connector*



Breakout Groups

- Small group discussions will last for about 45 minutes.
- Questions will be themed around
 - Past - Memories of the Fenway neighborhood
 - Present - Your current experience traveling to and through Fenway
 - Future - Your hopes for a safer, connected Fenway
- In the last 5 minutes, decide as a group one thing you'd like to share back to other groups.
- If you don't get to share all your comments, **fill out the StoryMap survey!** bit.ly/FTAPsurvey

Group Ground Rules

Share your thoughts, share the space!

- **Be respectful.**
- There are **no right or wrong answers**. Respect the lived experience of your neighbor.
- Be **mindful of time** when sharing so everyone can have a chance to share.
- **Wait for your neighbor to finish** their thought before speaking.

Discussion Group Report Out

Next Steps

- We will be hosting virtual office hours on March 25 and 31.
- Public comments will be synthesized and shared on our project website.
- We will begin analyzing future conditions, and host a public meeting sharing the results.
- We will host community walk-shops to gather feedback on design areas to inform design improvements
- Following this, we will present potential options for the design areas:
 - Kenmore Square
 - Brookline Ave
 - Van Ness / Ipswich St
 - *Additionally, the Roxbury-Fenway Connector*

Thank You for Attending!

For the latest project updates

visit bit.ly/FTAweb



More comments to share? Fill out the survey:

bit.ly/FTAPsurvey



Share the StoryMap with neighbors!

bit.ly/FTAPstorymap

Contact Us

Naoise McDonnell

naoise.mcdonnell@boston.gov