

Boston's Children

Part I

Boston Redevelopment Authority
Research Division
March 2014

Produced by the BRA Research Division:

Alvaro Lima – Director
Mark Melnik – Deputy Director

Kelly Dowd – Research Manager
Kevin Kang – Research Associate
Nicoya Borella – Research Assistant

Interns:
Chandana Cherukupalli
Gregory Watts

The BRA Research Division strives to understand the current environment of the city to produce quality research and targeted information that will inform and benefit the residents and businesses of Boston. The Division conducts research on Boston's economy, population, and commercial markets for all departments of the BRA, the City of Boston, and related organizations.

The information provided in this report is the best available at the time of its publication.

All or partial use of this report must be cited. Our preferred citation is as follows:
Boston Redevelopment Authority/Research Division, March 2014

For more information about research produced by the Boston Redevelopment Authority, please contact Kelly Dowd, Research Manager, by email at kelly.dowd@boston.gov or by telephone at (617) 918-4474.



City of Boston
Office of the Mayor
Martin J. Walsh

Boston's Children

This document is one of a three part report analyzing Boston's Children, their households, and their householders by selected characteristics.

Part I

Boston's Children
A summary of Boston's children age 0-17

Part II

Mapping Boston's Children in Poverty
Mapping children in poverty by selected demographic characteristics

Part III

Boston's Children: Complete Data Set
The complete collection of variable tables used to analyze children in Boston

Children 0-17

Summary of Findings

- 76.4% of children are Hispanic or non-white.
- 8.7% of children are foreign born.
- 55.4% of children live in a single parent household.
 - 63.2% of these are headed by a native born householder.
 - 87.1% of these are in female headed households.
- 78.6% of children enrolled in school are non-white.
- 85.9% of Boston's children enrolled in public school are non-white.
- 28.9% of Boston's kids are living below the poverty line.
 - 91.4% of these children are non-white.
- 16.3% of households with children have an income of \$22,350 or less.
 - 41.3% of single parent households with children have an income of \$22,350 or less.
- 13.3% of households with kids are linguistically isolated compared to 11.5% for all of Boston.
- Spanish is the second most common language spoken in households with children.
- 26.6% of householders with children have a high school degree and 30% of them have a bachelor's degree or higher, compared with 21.1% and 46.5% for Boston respectively.

This report uses data from the 2007-2011 American Community Survey, Public Use Microdata Sample.

Characteristics of Children in Boston

Race and Ethnicity

- The overwhelming majority (76.4%) of children age 0-17 in Boston are non-white. However, the following table shows that when the age groups are separated there are fewer minority children in the 0-5 age group than 6-11 or 12-17.

Race and Ethnicity	0-17 Year Olds		0-5 Year Olds		6-11 Year Olds		12-17 Year Olds	
	Estimate	%	Estimate	%	Estimate	%	Estimate	%
White	24,602	23.6%	11,104	29.8%	6,781	21.0%	6,717	19.3%
Black or African American	35,988	34.5%	11,122	29.9%	11,203	34.8%	13,663	39.2%
Hispanic	30,550	29.3%	10,261	27.6%	9,724	30.2%	10,565	30.3%
Asian	7,215	6.9%	2,522	6.8%	2,427	7.5%	2,266	6.5%
Some Other Race	2,372	2.3%	593	1.6%	937	2.9%	842	2.4%
Two or More Major Races	3,532	3.4%	1,621	4.4%	1,152	3.6%	759	2.2%
Total	104,259	100.0%	37,223	100.0%	32,224	100.0%	34,812	100.0%

Nativity

- While 27.1% of Boston population is foreign born, only 8.7% of its children are foreign born.
- For children age 0-5, 2.7% are foreign born.
- 8.2% of children 6-11 years old are foreign born.
- 15.6% of 12-17 year olds are foreign born.

Nativity	0-17 Year Olds		0-5 Year Olds		6-11 Year Olds		12-17 Year Olds	
	Estimate	%	Estimate	%	Estimate	%	Estimate	%
Native Born	95,187	91.3%	36,234	97.3%	29,587	91.8%	29,366	84.4%
Foreign Born	9,072	8.7%	989	2.7%	2,637	8.2%	5,446	15.6%
Total	104,259	100.0%	37,223	100.0%	32,224	100.0%	34,812	100.0%

Household Type and Family Structure

- Of the 98,052 children living in a family household, 55.4% are in single parent homes. Of those, 63.2% are living with a single parent who is native born, which accounts for 35% of all household types.
- 87.1% of the children in single parent homes are with female heads of household.
- In total, 48.3% of Boston's children are in a single, female headed household.

Nativity of Parents	0-17 Year Olds		0-5 Year Olds		6-11 Year Olds		12-17 Year Olds	
	Estimate	%	Estimate	%	Estimate	%	Estimate	%
<u>Two Parent Households</u>								
Both Parents Native	18,143	41.5%	8,764	47.6%	4,671	36.6%	4,708	37.6%
One Parent Foreign Born	7,213	16.5%	3,063	16.6%	2,368	18.5%	1,782	14.2%
Both Parents Foreign Born	18,373	42.0%	6,593	35.8%	5,733	44.9%	6,047	48.2%
Total	43,729	100.0%	18,420	100.0%	12,772	100.0%	12,537	100.0%
<u>One Parent Households</u>								
Parent Native	34,312	63.2%	12,062	67.0%	10,701	60.4%	11,549	62.1%
Parent Foreign Born	20,011	36.8%	5,942	33.0%	7,025	39.6%	7,044	37.9%
Total	54,323	100.0%	18,004	100.0%	17,726	100.0%	18,593	100.0%
<u>All Household Types</u>								
Two Parent HH, Both Native	18,143	18.5%	8,764	24.1%	4,671	15.3%	4,708	15.1%
Two Parent HH, One Parent FB	7,213	7.4%	3,063	8.4%	2,368	7.8%	1,782	5.7%
Two Parent HH, Both Parents FB	18,373	18.7%	6,593	18.1%	5,733	18.8%	6,047	19.4%
One Parent HH, Parent Native	34,312	35.0%	12,062	33.1%	10,701	35.1%	11,549	37.1%
One Parent HH, Parent FB	20,011	20.4%	5,942	16.3%	7,025	23.0%	7,044	22.6%
Total	98,052	100.0%	36,424	100.0%	30,498	100.0%	31,130	100.0%

Household Type – One Parent	0-17 Year Olds	
	Estimate	%
Living with Father	7,011	12.9%
Living with Mother	47,312	87.1%
Total	54,323	100.0%

- There is a significant difference in race and ethnicity between children living in one versus two parent households.
 - 41.4% of children in two parent households are white.
 - In one parent households, 10.5% of the children living are white, 43.8% are Black or African American, and 37.5% are Hispanic.

Race/Ethnicity by Household Type	0-17 Year Olds in Two Parent Households		0-17 Year Olds in One Parent Households	
	Estimate	%	Estimate	%
White	18,102	41.4%	5,694	10.5%
Black or African American	9,454	21.6%	23,795	43.8%
Hispanic	8,357	19.1%	20,351	37.5%
Asian	5,051	11.6%	1,742	3.2%
Some Other Race	1,061	2.4%	1,172	2.2%
Two or More Major Races	1,704	3.9%	1,569	2.9%
Total	43,729	100.0%	54,323	100.0%

Education

Grade Level Attending	0-17 Year Olds	
	Estimate	%
Not Attending School	26,446	25.4%
Nursery School/preschool	7,865	7.5%
Kindergarten	7,672	7.4%
Grade 1 to 4	21,553	20.7%
Grade 5 to 8	22,006	21.1%
Grade 9 to grade 12	17,975	17.2%
College undergraduate	742	0.7%
Total	104,259	100.0%

- Of the 77,813 children enrolled in school, 78.6% are non-white.
- Of the 61,099 children enrolled in public school, 85.9% are non-white.

Race and Ethnicity of Children Enrolled In School	0-17 Year Olds		0-5 Year Olds		6-11 Year Olds		12-17 Year Olds	
	Estimate	%	Estimate	%	Estimate	%	Estimate	%
White	16,690	21.4%	3,631	28.4%	6,645	21.0%	6,414	19.2%
Black or African American	28,443	36.6%	4,335	33.9%	10,956	34.7%	13,152	39.3%
Hispanic	23,075	29.7%	3,405	26.6%	9,539	30.2%	10,131	30.3%
Asian	5,331	6.9%	752	5.9%	2,398	7.6%	2,181	6.5%
Some Other Race	1,945	2.5%	166	1.3%	937	3.0%	842	2.5%
Two or More Major Races	2,329	3.0%	505	3.9%	1,110	3.5%	714	2.1%
Total	77,813	100.0%	12,794	100.0%	31,585	100.0%	33,434	100.0%

- There is a drop in the number of white children enrolled in school and in public school between the 0-5 and 6-11 age groups.
- In public schools, the number of white children increases slightly as the children reach exam school and high school age.

Race and Ethnicity of Children In Public School	0-17 Year Olds		0-5 Year Olds		6-11 Year Olds		12-17 Year Olds	
	Estimate	%	Estimate	%	Estimate	%	Estimate	%
White	8,604	14.1%	1,338	16.2%	3,298	12.8%	3,968	14.6%
Black or African American	24,331	39.8%	3,470	42.0%	9,788	38.1%	11,073	40.8%
Hispanic	20,379	33.4%	2,653	32.1%	8,816	34.3%	8,910	32.8%
Asian	4,509	7.4%	519	6.3%	1,996	7.8%	1,994	7.4%
Some Other Race	1,743	2.9%	110	1.3%	884	3.4%	749	2.8%
Two or More Major Races	1,533	2.5%	165	2.0%	938	3.6%	430	1.6%
Total	61,099	100.0%	8,255	100.0%	25,720	100.0%	27,124	100.0%

- Over 50% of children ages 0-11 in private school are white.
- The percentage of Black or African American children in private school increases from roughly 19% to 32.9% between the 6-11 and 12-17 age groups.

Race and Ethnicity of Children In Private School	0-17 Year Olds		0-5 Year Olds		6-11 Year Olds		12-17 Year Olds	
	Estimate	%	Estimate	%	Estimate	%	Estimate	%
White	8,086	48.4%	2,293	50.5%	3,347	57.1%	2,446	38.8%
Black or African American	4,112	24.6%	865	19.1%	1,168	19.9%	2,079	32.9%
Hispanic	2,696	16.1%	752	16.6%	723	12.3%	1,221	19.4%
Asian	822	4.9%	233	5.1%	402	6.9%	187	3.0%
Some Other Race	202	1.2%	56	1.2%	53	0.9%	93	1.5%
Two or More Major Races	796	4.8%	340	7.5%	172	2.9%	284	4.5%
Total	16,714	100.0%	4,539	100.0%	5,865	100.0%	6,310	100.0%

- 34.7%, or 21,185, of Boston’s children in public school are living below poverty.
- 40.9% (3,374) of children age 0-5 are living below the poverty line.
- Overall, 30,095 (28.9%) children in Boston live below the poverty line.
 - 91.4% of these children are non-white.

Poverty Level	0-17 Year Olds		0-5 Year Olds		6-11 Year Olds		12-17 Year Olds	
	Estimate	%	Estimate	%	Estimate	%	Estimate	%
Below or at Poverty Line	30,095	28.9%	10,026	26.9%	10,321	32.0%	9,748	28.0%
Above to Up to 2x Above PL	22,812	21.9%	7,909	21.2%	6,973	21.6%	7,930	22.8%
2x to Up to 3x Above Poverty Line	14,884	14.3%	5,115	13.7%	4,645	14.4%	5,124	14.7%
3x to Up to 4x Above Poverty Line	10,821	10.4%	3,329	8.9%	3,601	11.2%	3,891	11.2%
4x + Above Poverty Line	23,979	23.0%	10,679	28.7%	6,311	19.6%	6,989	20.1%
Missing	1,668	1.6%	165	0.4%	373	1.2%	1,130	3.2%
Total	104,259	100.0%	37,223	100.0%	32,224	100.0%	34,812	100.0%

Poverty Level of Non-White Children	0-17 Year Olds		0-5 Year Olds		6-11 Year Olds		12-17 Year Olds	
	Estimate	%	Estimate	%	Estimate	%	Estimate	%
Below or at Poverty Line	27,505	34.5%	8,991	34.4%	9,374	36.8%	9,140	32.5%
Above to Up to 2x Above PL	20,664	25.9%	7,000	26.8%	6,350	25.0%	7,314	26.0%
2x to Up to 3x Above Poverty Line	11,993	15.1%	4,075	15.6%	3,795	14.9%	4,123	14.7%
3x to Up to 4x Above Poverty Line	7,415	9.3%	2,058	7.9%	2,454	9.6%	2,903	10.3%
4x + Above Poverty Line	10,866	13.6%	3,830	14.7%	3,124	12.3%	3,912	13.9%
Missing	1,214	1.5%	165	0.6%	346	1.4%	703	2.5%
Total	79,657	100.0%	26,119	100.0%	25,443	100.0%	28,095	100.0%

Characteristics of Households with Children in Boston

Household Income

The median income for households with children is \$48,400, which is only slightly lower than Boston’s median income of \$49,900.

Household Income	With Children 0-17	
	Estimate	%
\$0 to \$11,175	7,721	13.1%
\$11,176 to \$22,350	7,748	13.2%
\$22,351 to \$50,000	15,009	25.5%
\$50,001 to \$75,000	8,254	14.0%
\$75,001 or Higher	20,123	34.2%
Total	58,855	100.0%

Language

The U.S. Census Bureau defines a linguistically isolated household as one in which no one 14 years of age and over speaks English very well.

- Compared to 11.5% for all of Boston’s households, just over 13% of households with children are linguistically isolated. However, the number is lower for the 12-17 age group (7.8%).

Linguistically Isolated Households	With Children 0-17		With Children 0-5		With Children 6-11		With Children 12-17	
	Estimate	%	Estimate	%	Estimate	%	Estimate	%
Not Linguistically Isolated	51,026	86.7%	23,548	83.2%	21,242	84.0%	24,208	92.2%
Linguistically Isolated	7,829	13.3%	4,759	16.8%	4,058	16.0%	2,060	7.8%
Total	58,855	100.0%	28,307	100.0%	25,300	100.0%	26,268	100.0%

All Linguistically Isolated Households	Boston	
	Estimate	%
Not Linguistically Isolated	219,265	88.5%
Linguistically Isolated	28,354	11.5%
Total	247,619	100.0%

- The most common language spoken at home in households with children is English at 51.4%, and the second most common language is Spanish at 25.8%.

Language Spoken at Home With Children 0-17		
	Estimate	%
English	30,252	51.4%
Spanish	15,179	25.8%
French Creole	3,188	5.4%
Portuguese	1,610	2.7%
Vietnamese	1,499	2.5%
Chinese	1,291	2.2%
French	1,001	1.7%
Cantonese	509	0.9%
Kru, Ibo, Yoruba	498	0.8%
Italian	359	0.6%
Other	3,469	5.9%
Total	58,855	100.0%

Employment Status

- The most likely living situation for children regarding the householder’s labor force status is in a single, female headed household with the female householder in the labor force.
- The second most likely is in a married-couple family with both parents in the labor force.
- The third likely is in a female headed household in which the householder is not in the labor force.
- Overall, 45.1% of households with children are headed by single females.

*For all scenarios, however, it is not possible to determine if the parents are employed or unemployed.

- As children move through the 0-5, 6-11, and 12-17 age groups, the likelihood of them living in a married-couple family decreases and the likelihood of their being in a single, female headed household increases.

Household Family Type & Labor Force Status of Households	With Children 0-17		With Children 0-5		With Children 6-11		With Children 12-17	
	Estimate	%	Estimate	%	Estimate	%	Estimate	%
Married-couple: Husband and wife in LF	18,891	32.1%	10,225	36.1%	7,567	29.9%	7,326	27.9%
Married-couple: Husband in LF, wife not in LF	5,624	9.6%	3,433	12.1%	2,133	8.4%	2,010	7.7%
Married-couple: Husband not in LF, wife in LF	1,685	2.9%	630	2.2%	657	2.6%	892	3.4%
Married-couple: Neither husband nor wife in LF	592	1.0%	357	1.3%	108	0.4%	260	1.0%
Male householder, no wife present, in LF	4,495	7.6%	1,921	6.8%	1,627	6.4%	1,917	7.3%
Male householder, no wife present, not in LF	694	1.2%	233	0.8%	312	1.2%	283	1.1%
Female householder, no husband present, in LF	19,525	33.2%	8,393	29.6%	9,248	36.6%	9,778	37.2%
Female householder, no husband present, not in LF	7,016	11.9%	3,115	11.0%	3,549	14.0%	3,507	13.4%
N/A (GQ/vacant/non-family household)	333	0.6%	0	0.0%	99	0.4%	295	1.1%
Total	58,855	100.0%	28,307	100.0%	25,300	100.0%	26,268	100.0%

Characteristics of Householders with Children in Boston

Race and Ethnicity

- There are more children of “Two or More Races” than there are householders of “Two or More Races”, demonstrating that there is increasing diversity among this generation of families.

Race/Ethnicity of Householder	With Children 0-17		With Children 0-5		With Children 6-11		With Children 12-17	
	Estimate	%	Estimate	%	Estimate	%	Estimate	%
White	17,303	29.4%	9,427	33.3%	6,475	25.6%	6,024	22.9%
Black or African American	18,982	32.3%	7,884	27.9%	8,543	33.8%	10,238	39.0%
Hispanic	15,602	26.5%	7,545	26.7%	7,416	29.3%	7,093	27.0%
Asian	4,797	8.2%	2,463	8.7%	1,863	7.4%	1,871	7.1%
Some Other Race	1,277	2.2%	541	1.9%	657	2.6%	691	2.6%
Two or More Major Races	894	1.5%	447	1.6%	346	1.4%	351	1.3%
Total	58,855	100.0%	28,307	100.0%	25,300	100.0%	26,268	100.0%

Race and Ethnicity of Children	0-17 Year Olds		0-5 Year Olds		6-11 Year Olds		12-17 Year Olds	
	Estimate	%	Estimate	%	Estimate	%	Estimate	%
White	24,602	23.6%	11,104	29.8%	6,781	21.0%	6,717	19.3%
Black or African American	35,988	34.5%	11,122	29.9%	11,203	34.8%	13,663	39.2%
Hispanic	30,550	29.3%	10,261	27.6%	9,724	30.2%	10,565	30.3%
Asian	7,215	6.9%	2,522	6.8%	2,427	7.5%	2,266	6.5%
Some Other Race	2,372	2.3%	593	1.6%	937	2.9%	842	2.4%
Two or More Major Races	3,532	3.4%	1,621	4.4%	1,152	3.6%	759	2.2%
Total	104,259	100.0%	37,223	100.0%	32,224	100.0%	34,812	100.0%

Nativity and Language

- Just fewer than 50% of householders with children are foreign born, and approximately 14% of householders have limited English proficiency.
- At 15.9%, the percentage of householders with limited English proficiency is slightly higher for those with children between the ages of 6-17.

Ability to Speak English	With Children 0-17		With Children 0-5		With Children 6-11		With Children 12-17	
	Estimate	%	Estimate	%	Estimate	%	Estimate	%
English Proficient	50,673	86.1%	24,875	87.9%	21,268	84.1%	22,087	84.1%
Limited English Proficiency	8,182	13.9%	3,432	12.1%	4,032	15.9%	4,181	15.9%
Total	58,855	100.0%	28,307	100.0%	25,300	100.0%	26,268	100.0%

Education

Householders with children have lower educational attainment than the overall percentages for Boston.

- While 26.6% of householders with children have just a high school degree (21.1% for Boston), there are also fewer householders with children who have a Bachelor's degree or higher (30%) than the total percentage for Boston (46.5%).
- It should also be noted that 6.1% of householders with children are currently enrolled in an undergraduate or graduate program or professional school.

Educational Attainment	With Children 0-17		With Children 0-5		With Children 6-11		With Children 12-17	
	Estimate	%	Estimate	%	Estimate	%	Estimate	%
8th Grade or less	4,487	7.6%	2,035	7.2%	2,160	8.5%	2,413	9.2%
Less than High School	5,830	9.9%	2,654	9.4%	3,246	12.8%	3,052	11.6%
High School Graduate	15,667	26.6%	6,511	23.0%	6,764	26.7%	8,065	30.7%
Some College	11,140	18.9%	5,343	18.9%	5,634	22.3%	4,577	17.4%
Associate's Degree	4,054	6.9%	1,681	5.9%	1,815	7.2%	2,057	7.8%
Bachelor's Degree	9,264	15.7%	4,728	16.7%	3,288	13.0%	3,735	14.2%
Graduate Degree	8,413	14.3%	5,355	18.9%	2,393	9.5%	2,369	9.0%
Total	58,855	100.0%	28,307	100.0%	25,300	100.0%	26,268	100.0%

Children in Boston by Neighborhood

Children Ages 0-17

Sources: Census 2010 US Census Bureau, BRA Research Division Analysis

Children 0-5 Years Old									
	Total Population	Total Children 0-5	% of Boston's Children 0-5	Children 0-5 as % of Neighborhood Population	1 year and under	2 years	3 years	4 years	5 years
Boston	617,594	32,466	100.0%	5.3%	7,306	6,630	6,509	6,084	5,937
Allston	29,196	642	2.0%	2.2%	155	150	122	110	105
Back Bay	18,088	566	1.7%	3.1%	170	118	115	84	79
Bay Village	1,312	27	0.1%	2.1%	13	5	4	4	1
Beacon Hill	9,023	292	0.9%	3.2%	85	70	49	55	33
Brighton	45,801	1,516	4.7%	3.3%	395	326	295	255	245
Charlestown	16,439	1,094	3.4%	6.7%	305	227	186	196	180
Chinatown	4,444	160	0.5%	3.6%	42	24	36	25	33
Dorchester	114,235	7,917	24.4%	6.9%	1,629	1,546	1,641	1,521	1,580
Downtown	9,872	253	0.8%	2.6%	107	43	36	40	27
East Boston	40,508	3,091	9.5%	7.6%	660	586	639	605	601
Fenway	33,796	296	0.9%	0.9%	83	72	58	45	38
Harbor Islands	535	4	0.0%	0.7%	3	0	1	0	0
Hyde Park	30,637	1,792	5.5%	5.8%	359	386	334	352	361
Jamaica Plain	37,468	2,248	6.9%	6.0%	536	489	444	407	372
Leather District	639	33	0.1%	5.2%	15	5	10	2	1
Longwood Medical Area	3,785	20	0.1%	0.5%	7	8	2	2	1
Mattapan	22,600	1,435	4.4%	6.3%	251	299	308	288	289
Mission Hill	16,305	518	1.6%	3.2%	103	105	102	102	106
North End	10,131	207	0.6%	2.0%	51	47	42	45	22
Roslindale	28,680	1,929	5.9%	6.7%	410	376	403	372	368
Roxbury	48,454	3,373	10.4%	7.0%	662	654	717	679	661
South Boston	33,311	1,450	4.5%	4.4%	351	320	257	272	250
South Boston Waterfront	1,889	45	0.1%	2.4%	16	21	2	4	2
South End	24,577	1,212	3.7%	4.9%	344	259	254	185	170
West End	5,423	208	0.6%	3.8%	98	44	24	23	19
West Roxbury	30,446	2,138	6.6%	7.0%	456	450	428	411	393

Children 6-11 Years Old

	Total Population	Total Children 6-11	% of Boston's Children 6-11	Children 6-11 as % of Neighborhood Population	6 years	7 years	8 years	9 years	10 years	11 years
Boston	617,594	31,701	100.0%	5.1%	5,356	5,359	5,128	5,311	5,289	5,258
Allston	29,196	401	1.3%	1.4%	80	55	70	74	62	60
Back Bay	18,088	231	0.7%	1.3%	56	37	30	29	27	52
Bay Village	1,312	15	0.0%	1.1%	0	2	2	2	7	2
Beacon Hill	9,023	199	0.6%	2.2%	36	41	32	34	28	28
Brighton	45,801	1,061	3.3%	2.3%	194	194	155	185	163	170
Charlestown	16,439	792	2.5%	4.8%	147	155	129	129	112	120
Chinatown	4,444	147	0.5%	3.3%	23	19	29	25	29	22
Dorchester	114,235	9,119	28.8%	8.0%	1,476	1,553	1,524	1,509	1,527	1,530
Downtown	9,872	96	0.3%	1.0%	30	15	11	19	14	7
East Boston	40,508	2,784	8.8%	6.9%	491	486	433	491	424	459
Fenway	33,796	162	0.5%	0.5%	30	25	26	20	45	16
Harbor Islands	535	1	0.0%	0.2%	0	0	0	0	1	0
Hyde Park	30,637	2,311	7.3%	7.5%	350	367	374	390	414	416
Jamaica Plain	37,468	1,881	5.9%	5.0%	329	341	305	296	291	319
Leather District	639	7	0.0%	1.1%	2	2	0	1	1	1
Longwood Medical Area	3,785	2	0.0%	0.1%	0	0	0	1	0	1
Mattapan	22,600	1,751	5.5%	7.7%	286	293	260	311	306	295
Mission Hill	16,305	597	1.9%	3.7%	98	101	79	100	100	119
North End	10,131	134	0.4%	1.3%	27	21	28	20	24	14
Roslindale	28,680	1,960	6.2%	6.8%	327	308	306	332	337	350
Roxbury	48,454	3,784	11.9%	7.8%	631	619	605	649	644	636
South Boston	33,311	1,335	4.2%	4.0%	218	222	230	229	226	210
South Boston Waterfront	1,889	15	0.0%	0.8%	5	2	2	1	1	4
South End	24,577	871	2.7%	3.5%	139	177	137	132	139	147
West End	5,423	76	0.2%	1.4%	21	16	12	13	10	4
West Roxbury	30,446	1,969	6.2%	6.5%	360	308	349	319	357	276

Children 12-17 Years Old

	Total Population	Total Children 12-17	% of Boston's Children 12-17	Children 12-17 as % of Neighborhood Population						
				12 years	13 years	14 years	15 years	16 years	17 years	
Boston	617,594	33,920	100.0%	5.5%	5,319	5,174	5,483	5,731	5,837	6,376
Allston	29,196	456	1.3%	1.6%	62	69	69	77	76	103
Back Bay	18,088	168	0.5%	0.9%	26	26	32	22	26	36
Bay Village	1,312	16	0.0%	1.2%	0	2	3	3	5	3
Beacon Hill	9,023	127	0.4%	1.4%	17	27	25	18	18	22
Brighton	45,801	1,088	3.2%	2.4%	167	164	166	205	172	214
Charlestown	16,439	647	1.9%	3.9%	94	136	117	109	102	89
Chinatown	4,444	226	0.7%	5.1%	38	38	30	36	45	39
Dorchester	114,235	10,227	30.2%	9.0%	1,597	1,495	1,680	1,751	1,794	1,910
Downtown	9,872	73	0.2%	0.7%	9	7	16	3	14	24
East Boston	40,508	2,588	7.6%	6.4%	366	405	421	461	450	485
Fenway	33,796	192	0.6%	0.6%	20	27	24	23	31	67
Harbor Islands	535	0	0.0%	0.0%	0	0	0	0	0	0
Hyde Park	30,637	2,693	7.9%	8.8%	425	432	423	439	478	496
Jamaica Plain	37,468	1,866	5.5%	5.0%	320	268	310	366	289	313
Leather District	639	6	0.0%	0.9%	0	0	3	2	0	1
Longwood Medical Area	3,785	33	0.1%	0.9%	0	2	1	1	12	17
Mattapan	22,600	2,090	6.2%	9.2%	299	325	343	352	394	377
Mission Hill	16,305	721	2.1%	4.4%	110	115	108	113	130	145
North End	10,131	91	0.3%	0.9%	18	13	20	15	15	10
Roslindale	28,680	2,156	6.4%	7.5%	375	345	327	312	368	429
Roxbury	48,454	4,260	12.6%	8.8%	653	633	709	714	740	811
South Boston	33,311	1,433	4.2%	4.3%	238	194	234	251	231	285
South Boston Waterfront	1,889	9	0.0%	0.5%	2	4	2	0	0	1
South End	24,577	845	2.5%	3.4%	137	147	135	131	148	147
West End	5,423	61	0.2%	1.1%	3	7	10	6	9	26
West Roxbury	30,446	1,848	5.4%	6.1%	343	293	275	321	290	326

Children 0-17

	Total Population	Total Children 0-17	% of Boston's Children 0-17	Children 0-17 as % of Neighborhood Population
Boston	617,594	103,710	100.0%	16.8%
Allston	29,196	1,582	1.5%	5.4%
Back Bay	18,088	1,018	1.0%	5.6%
Bay Village	1,312	60	0.1%	4.6%
Beacon Hill	9,023	676	0.7%	7.5%
Brighton	45,801	3,848	3.7%	8.4%
Charlestown	16,439	2,685	2.6%	16.3%
Chinatown	4,444	562	0.5%	12.6%
Dorchester	114,235	28,827	27.8%	25.2%
Downtown	11,215	422	0.4%	3.8%
East Boston	40,508	9,025	8.7%	22.3%
Fenway	33,796	679	0.7%	2.0%
Harbor Islands	535	5	0.0%	0.9%
Hyde Park	30,637	7,186	6.9%	23.5%
Jamaica Plain	37,468	6,327	6.1%	16.9%
Leather District	639	48	0.0%	7.5%
Longwood Medical Area	3,785	56	0.1%	1.5%
Mattapan	22,600	5,552	5.4%	24.6%
Mission Hill	16,305	1,935	1.9%	11.9%
North End	10,131	464	0.4%	4.6%
Roslindale	28,680	6,410	6.2%	22.4%
Roxbury	48,454	12,042	11.6%	24.9%
South Boston	33,311	4,453	4.3%	13.4%
South Boston Waterfront	1,889	72	0.1%	3.8%
South End	24,577	3,105	3.0%	12.6%
West End	4,080	345	0.3%	8.5%
West Roxbury	30,446	6,326	6.1%	20.8%

Sources: Census 2010 US Census Bureau, BRA Research Division Analysis

Mapping Boston's Children in Poverty

With the 2007-2011 American Community Survey

Part II

Boston Redevelopment Authority
Research Division
March 2014

Produced by the BRA Research Division:

Alvaro Lima – Director
Mark Melnik – Deputy Director

Kelly Dowd – Research Manager
Kevin Kang – Research Associate
Nicoya Borella – Research Assistant

Interns:
Chandana Cherukupalli
Gregory Watts

The BRA Research Division strives to understand the current environment of the city to produce quality research and targeted information that will inform and benefit the residents and businesses of Boston. The Division conducts research on Boston's economy, population, and commercial markets for all departments of the BRA, the City of Boston, and related organizations.

The information provided in this report is the best available at the time of its publication.

All or partial use of this report must be cited. Our preferred citation is as follows:
Boston Redevelopment Authority/Research Division, March 2014

For more information about research produced by the Boston Redevelopment Authority, please contact Kelly Dowd, Research Manager, by email at kelly.dowd@boston.gov or by telephone at (617) 918-4474.



City of Boston
Office of the Mayor
Martin J. Walsh

Boston's Children

This document is one of a three part report analyzing Boston's Children, their households, and their householders by selected characteristics.

Part I

Boston's Children
A summary of Boston's children age 0-17

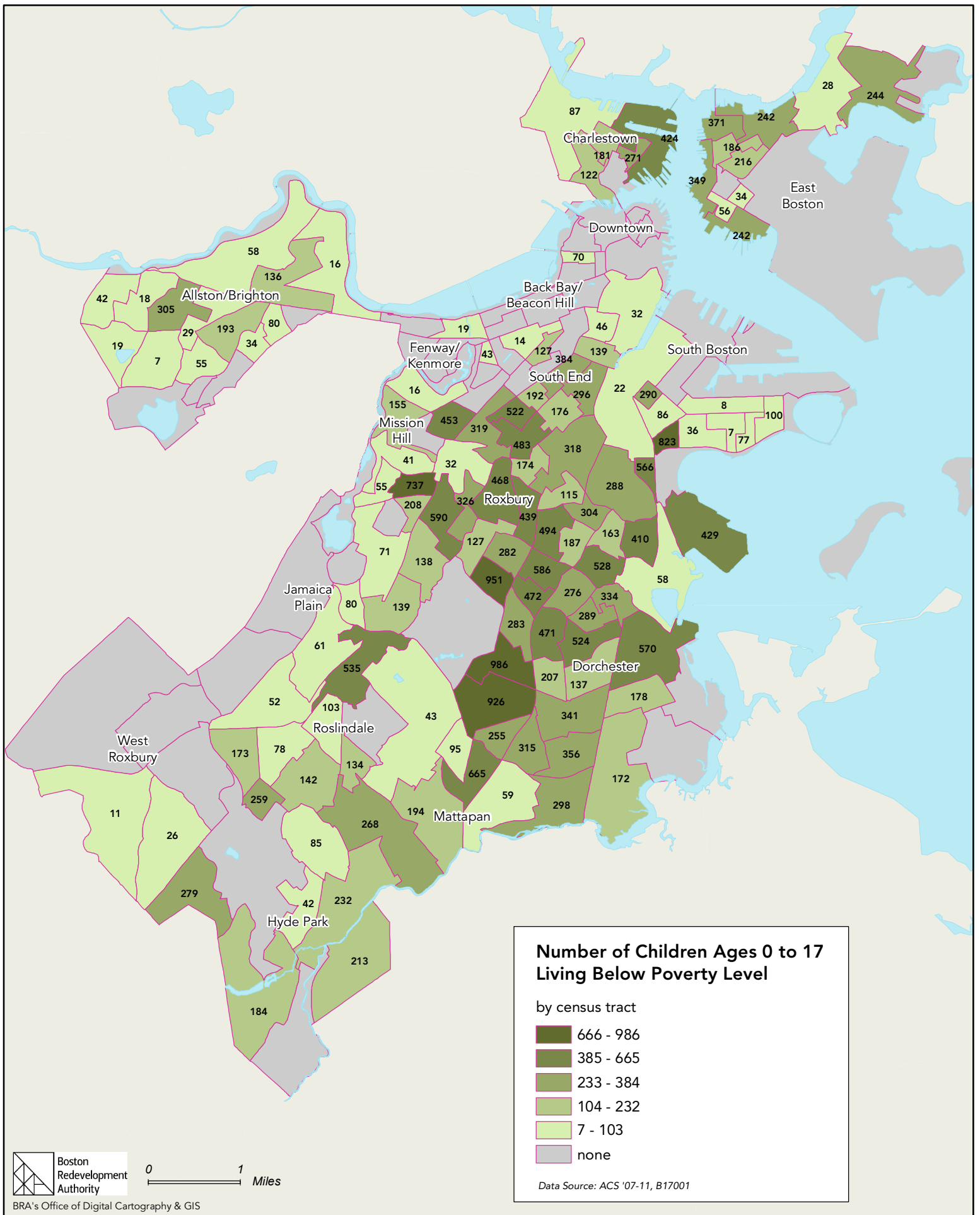
Part II

Mapping Boston's Children in Poverty
Mapping children in poverty by selected demographic characteristics

Part III

Boston's Children: Complete Data Set
The complete collection of variable tables used to analyze children in Boston

Children Living Below the Poverty Level



Number of Children Ages 0 to 17 Living Below Poverty Level

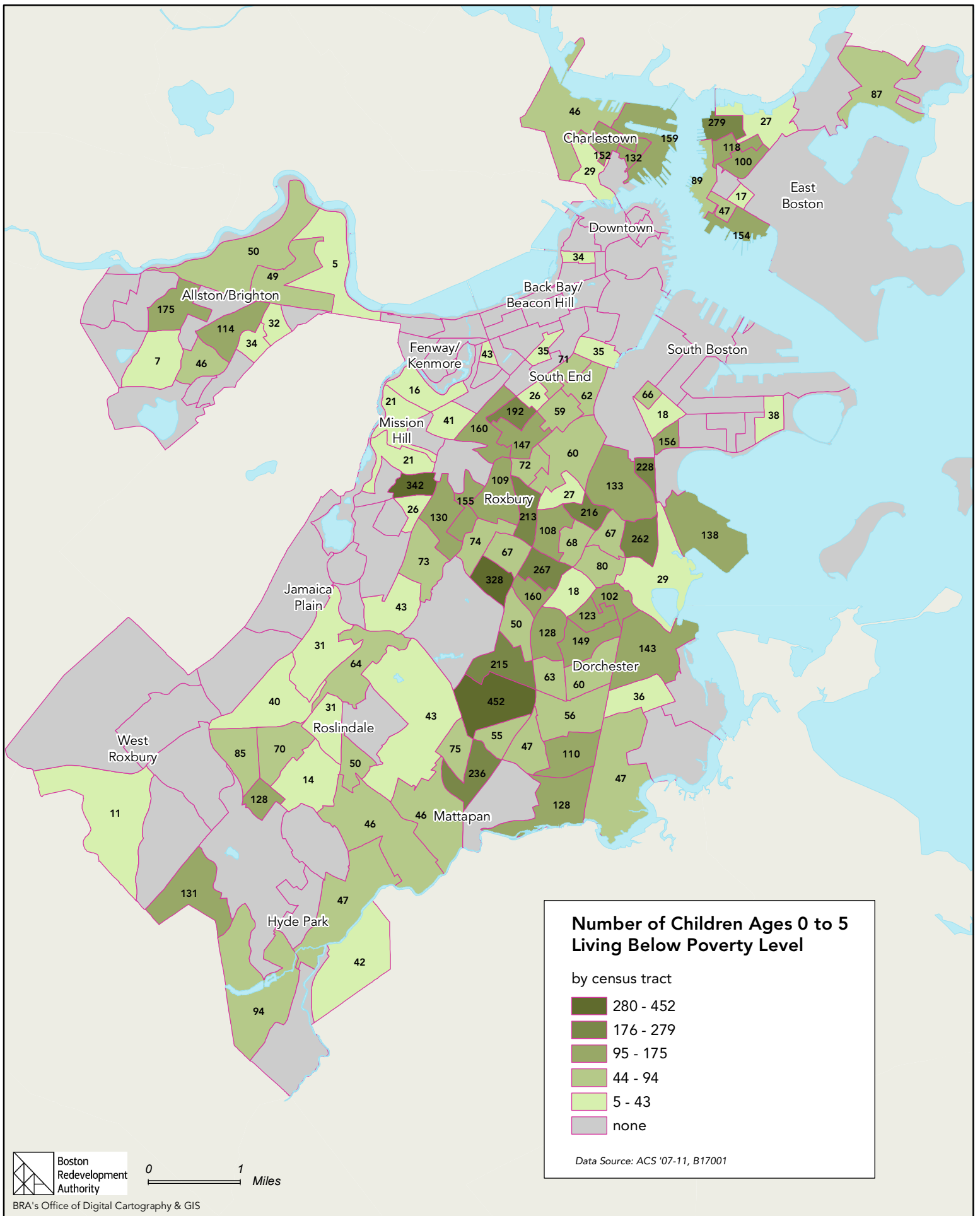
by census tract

- 666 - 986
- 385 - 665
- 233 - 384
- 104 - 232
- 7 - 103
- none

Data Source: ACS '07-11, B17001



0 1 Miles



Number of Children Ages 0 to 5 Living Below Poverty Level

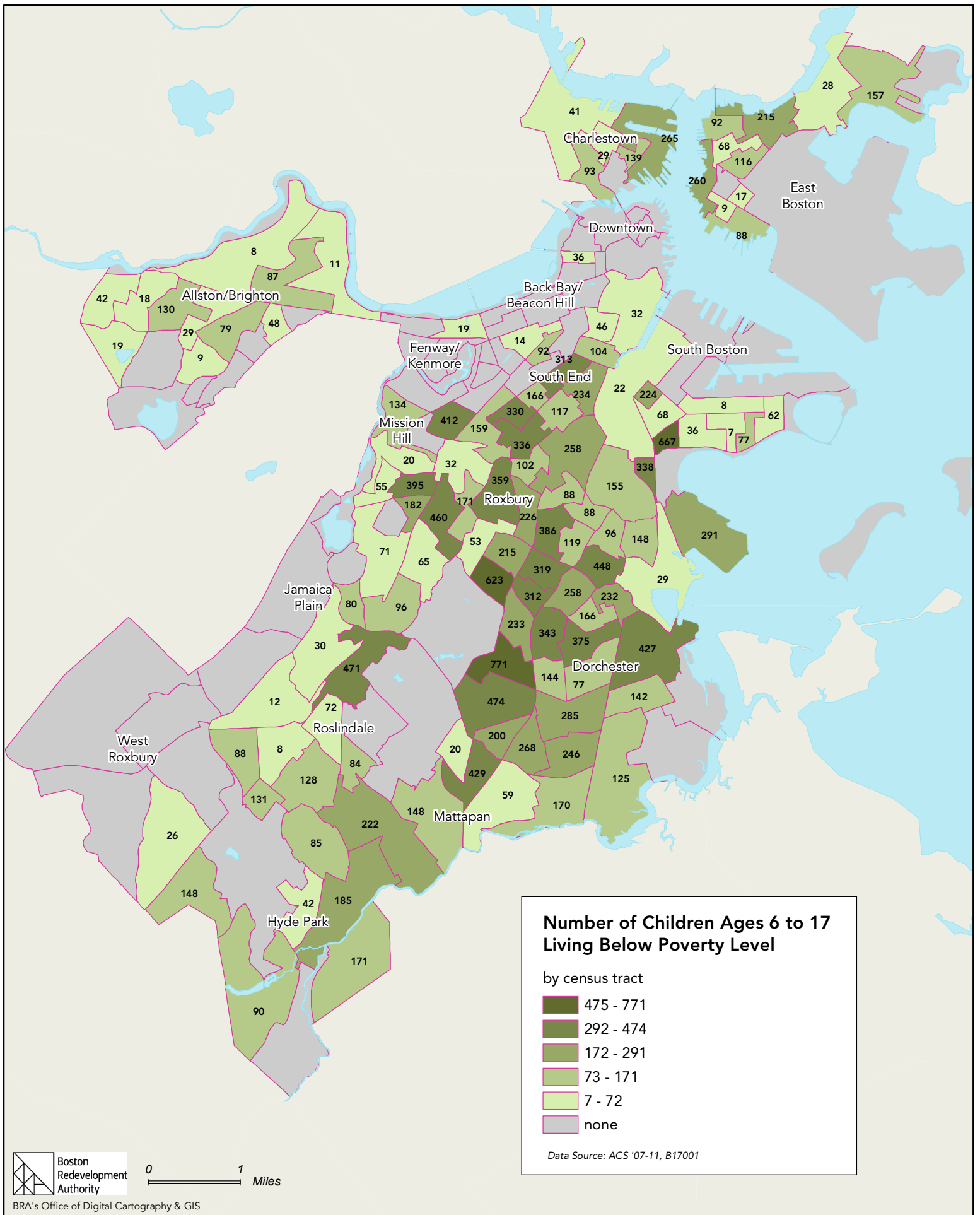
by census tract

- 280 - 452
- 176 - 279
- 95 - 175
- 44 - 94
- 5 - 43
- none

Data Source: ACS '07-11, B17001



0 1 Miles



Number of Children Ages 6 to 17 Living Below Poverty Level

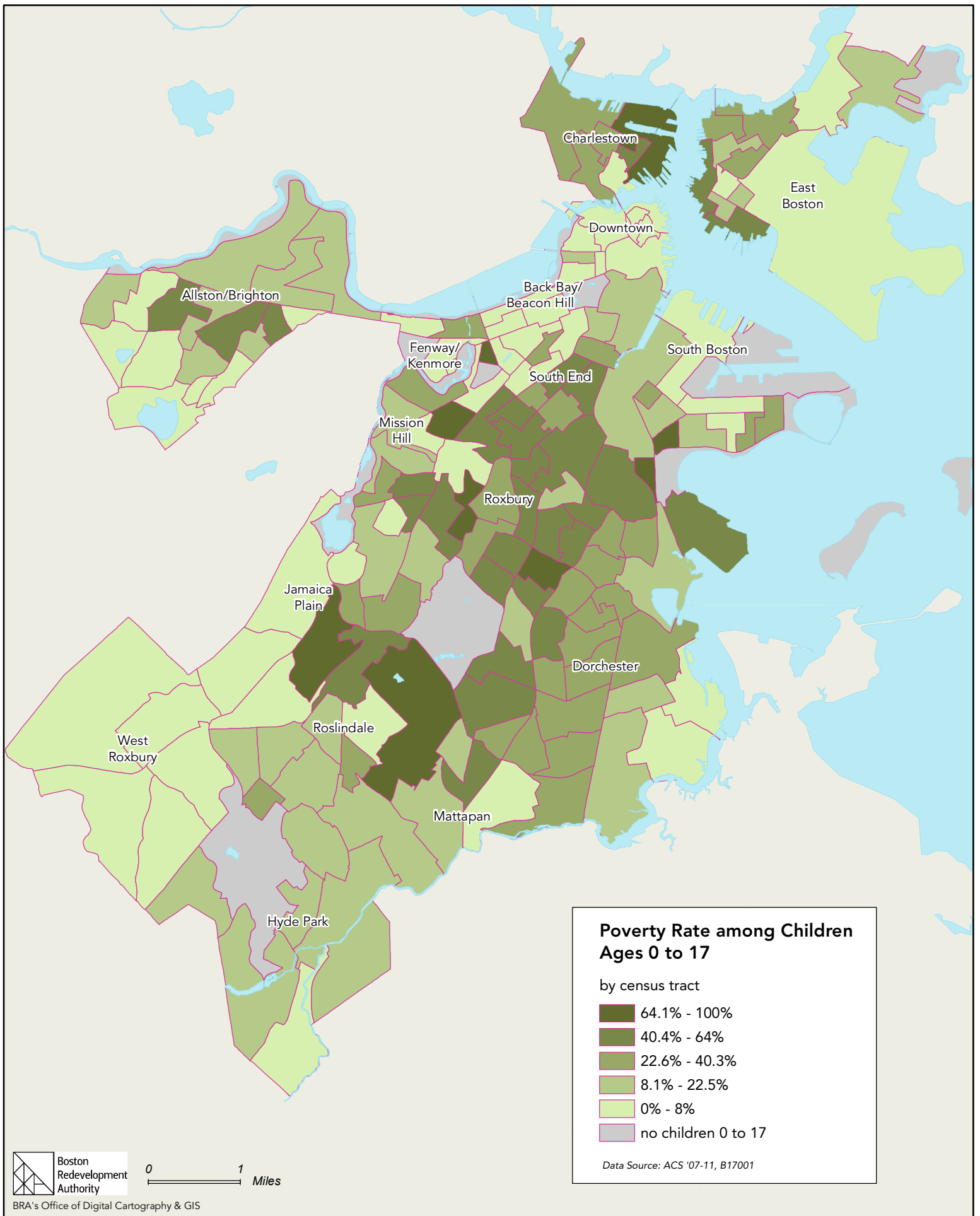
by census tract

- 475 - 771
- 292 - 474
- 172 - 291
- 73 - 171
- 7 - 72
- none

Data Source: ACS '07-11, B17001



0 1 Miles



**Poverty Rate among Children
Ages 0 to 17**

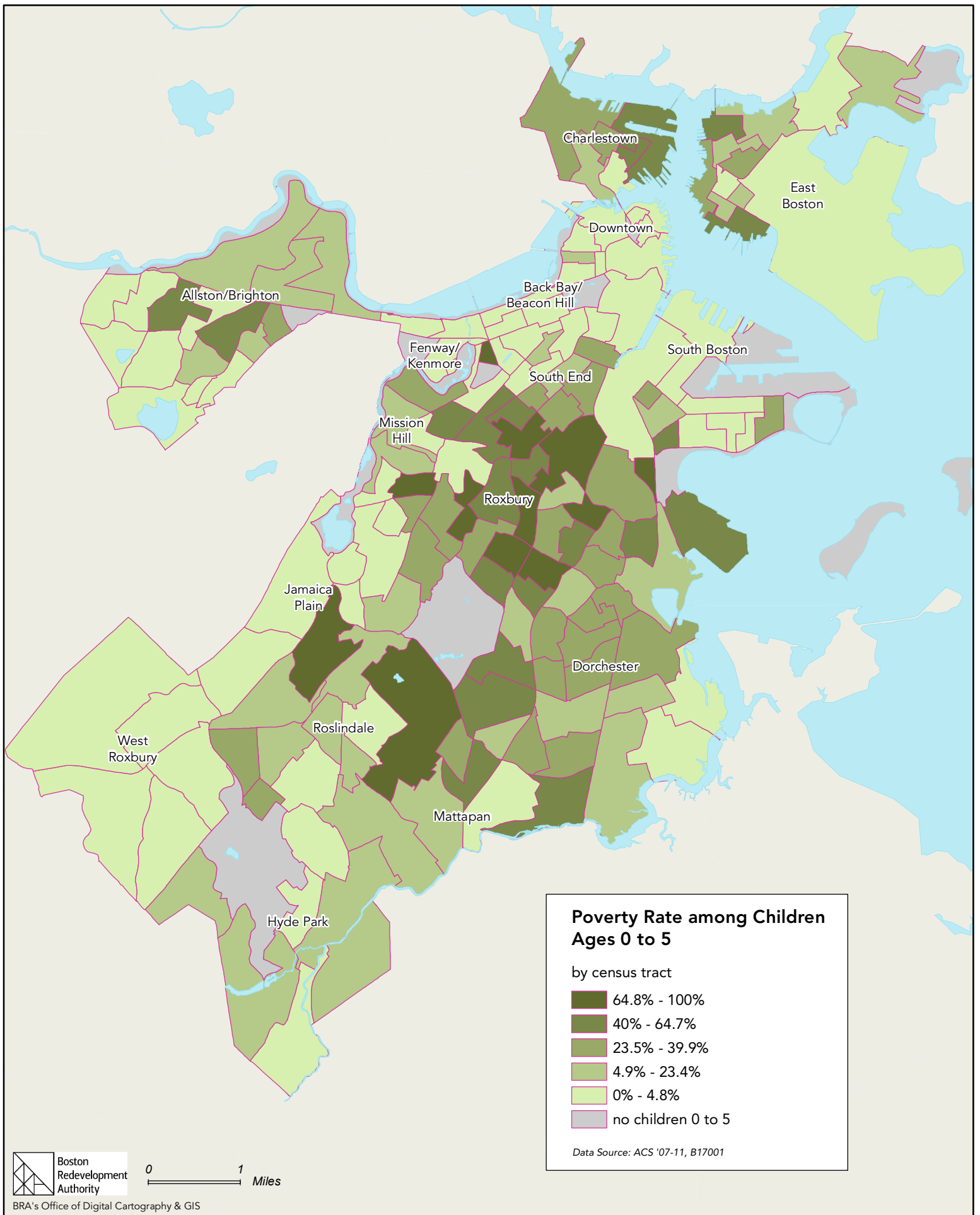
by census tract

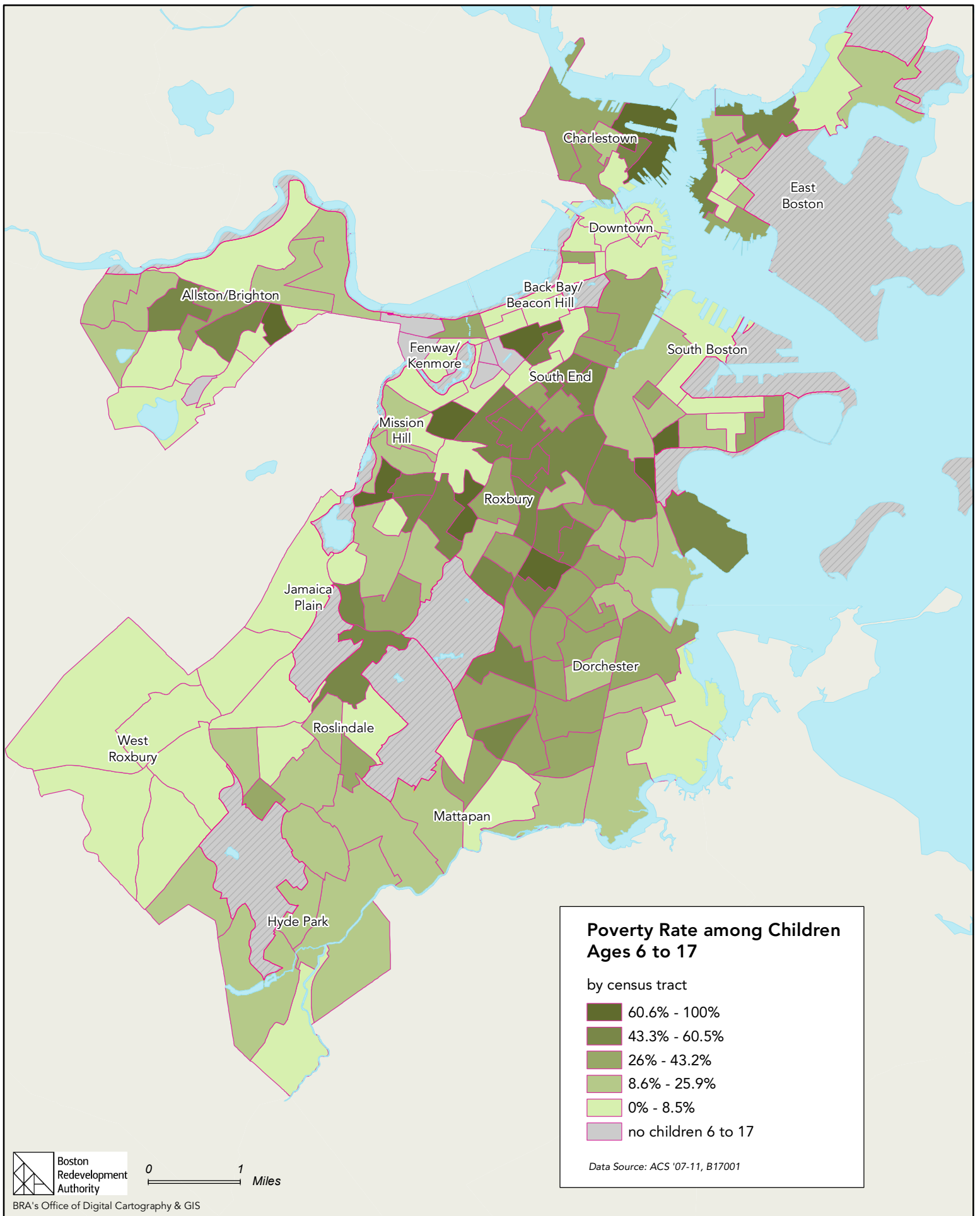
- 64.1% - 100%
- 40.4% - 64%
- 22.6% - 40.3%
- 8.1% - 22.5%
- 0% - 8%
- no children 0 to 17

Data Source: ACS '07-11, B17001



0
0
1
 Miles





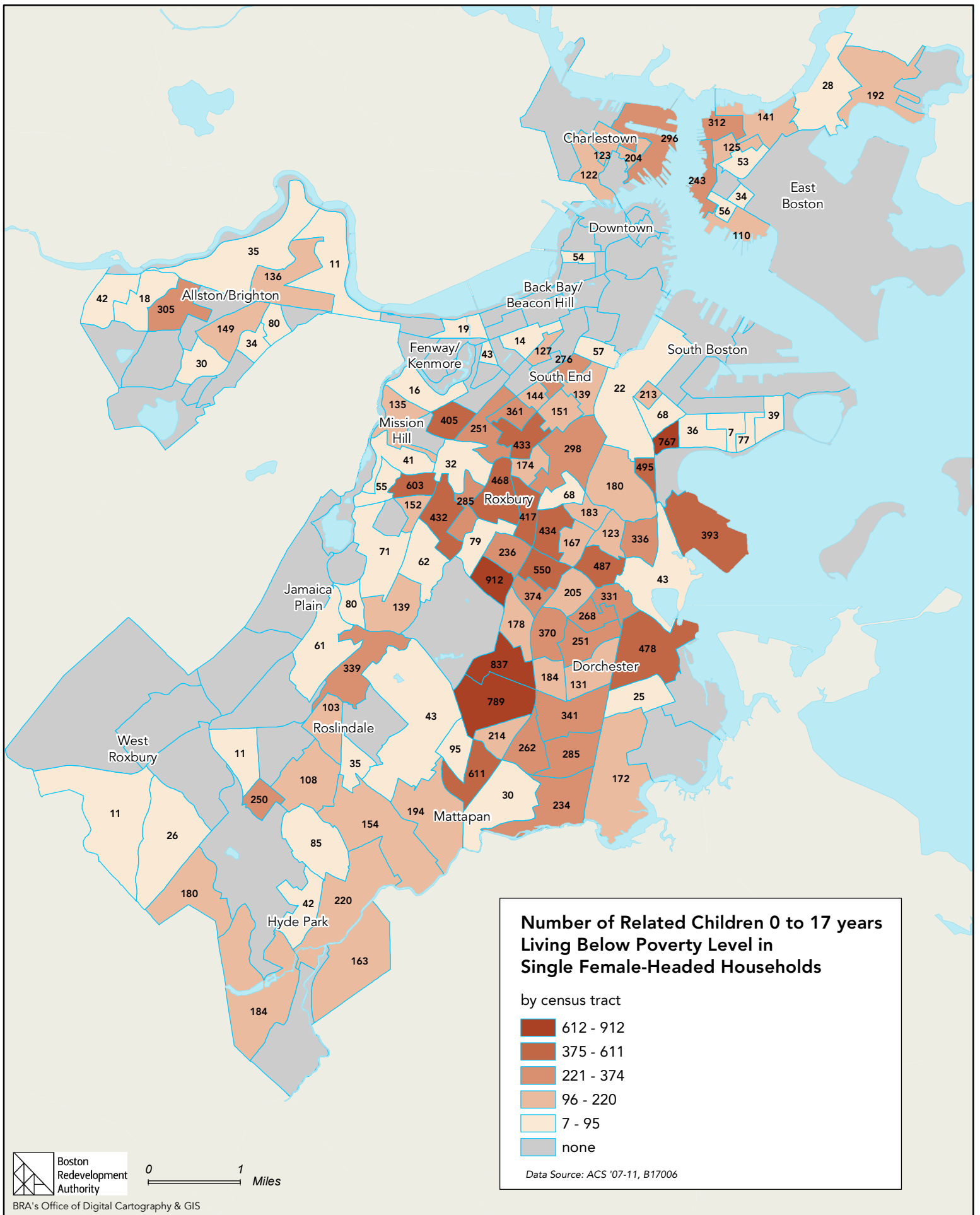
**Poverty Rate among Children
Ages 6 to 17**

by census tract

- 60.6% - 100%
- 43.3% - 60.5%
- 26% - 43.2%
- 8.6% - 25.9%
- 0% - 8.5%
- no children 6 to 17

Data Source: ACS '07-11, B17001

Related Children Living Below the Poverty Level in Single Female-Headed Households



**Number of Related Children 0 to 17 years
Living Below Poverty Level in
Single Female-Headed Households**

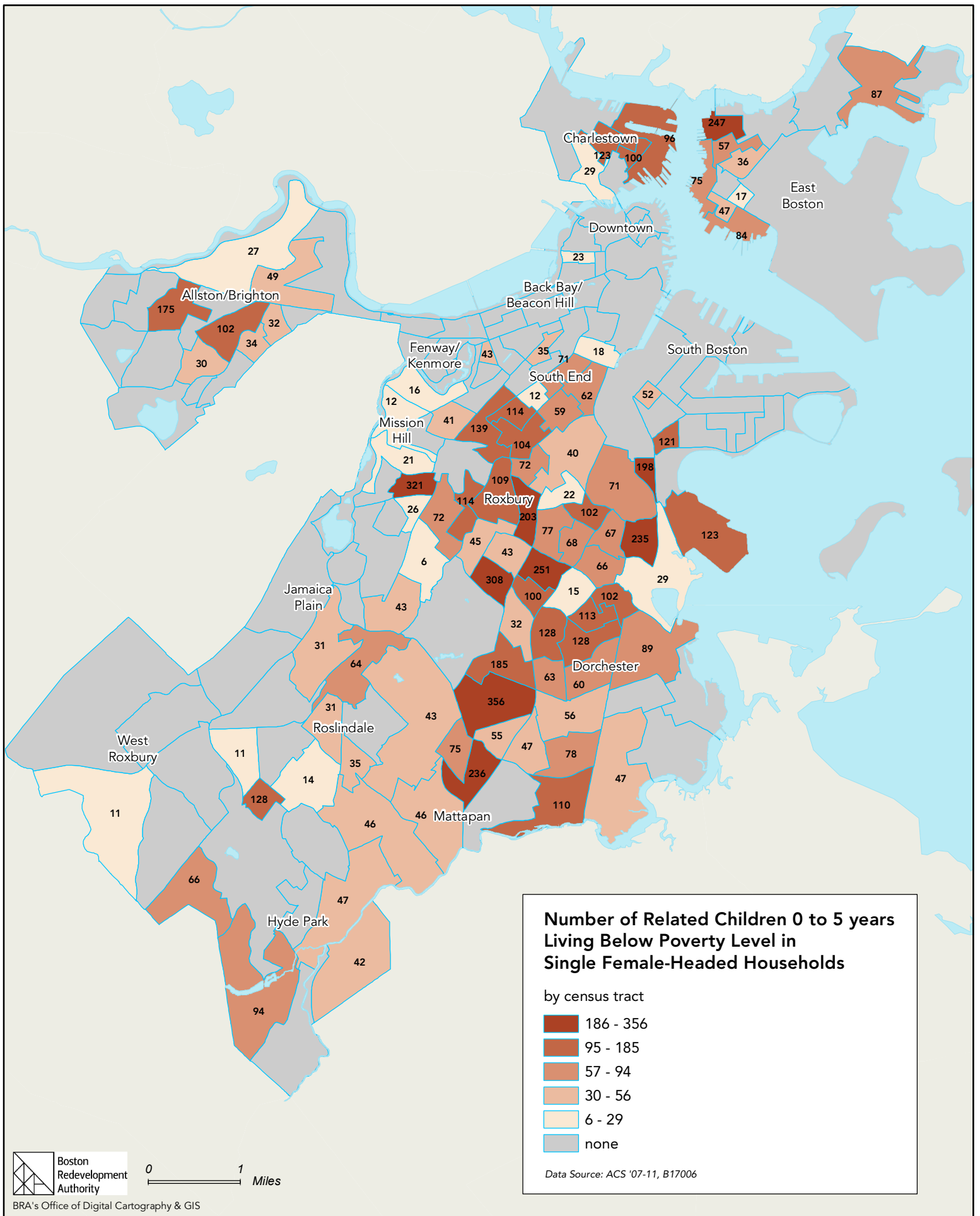
by census tract

- 612 - 912
- 375 - 611
- 221 - 374
- 96 - 220
- 7 - 95
- none

Data Source: ACS '07-11, B17006



0 1 Miles

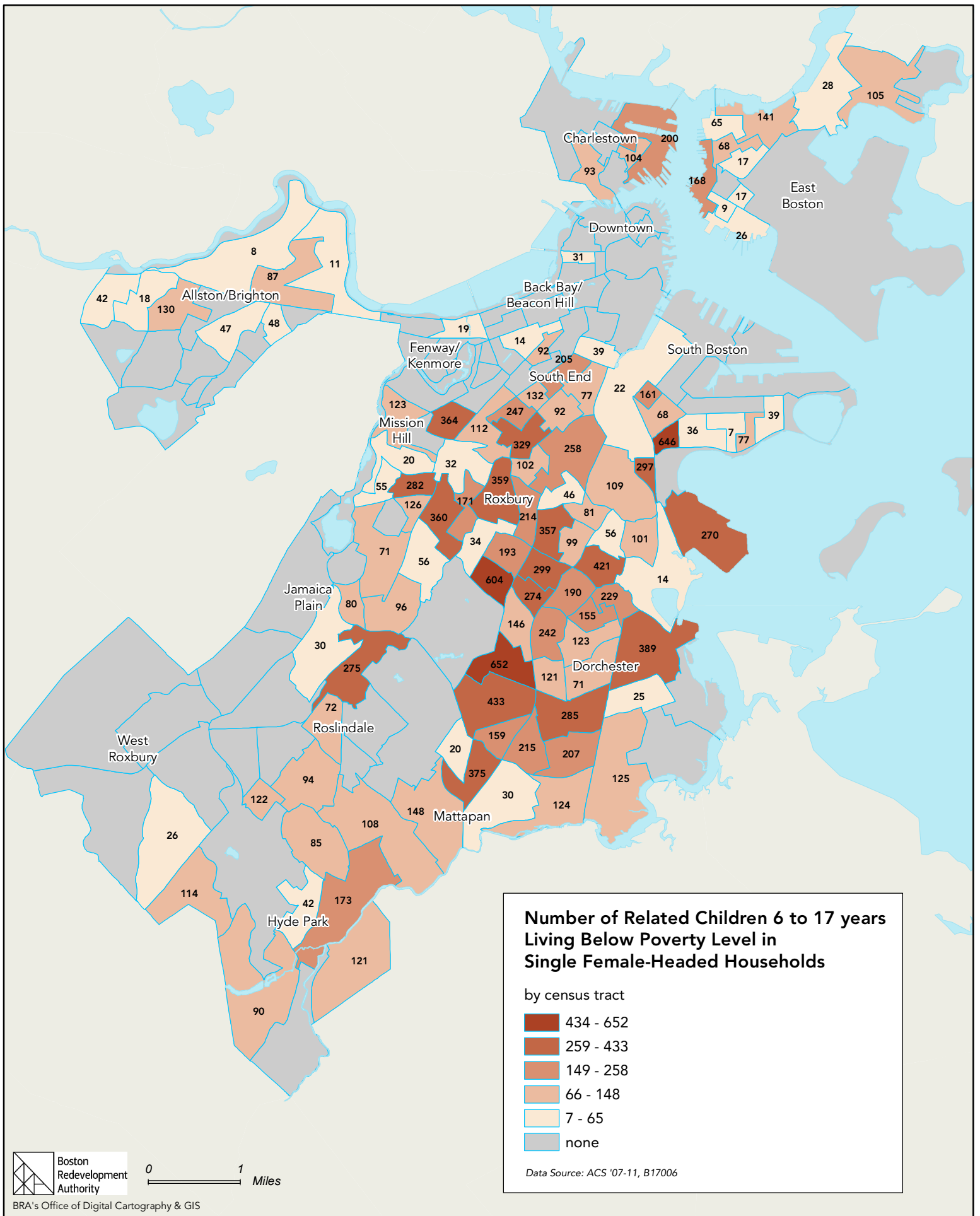


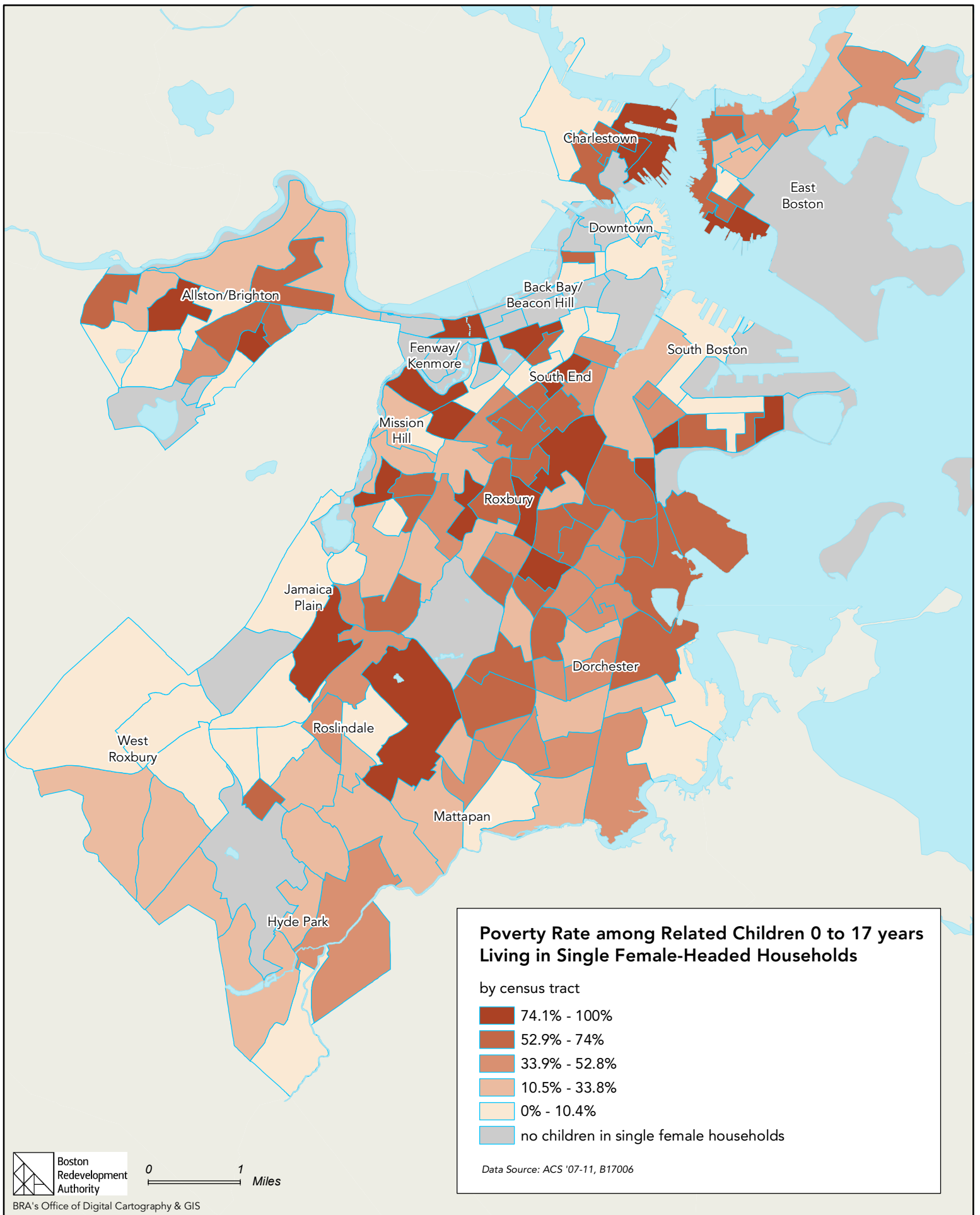
Number of Related Children 0 to 5 years Living Below Poverty Level in Single Female-Headed Households

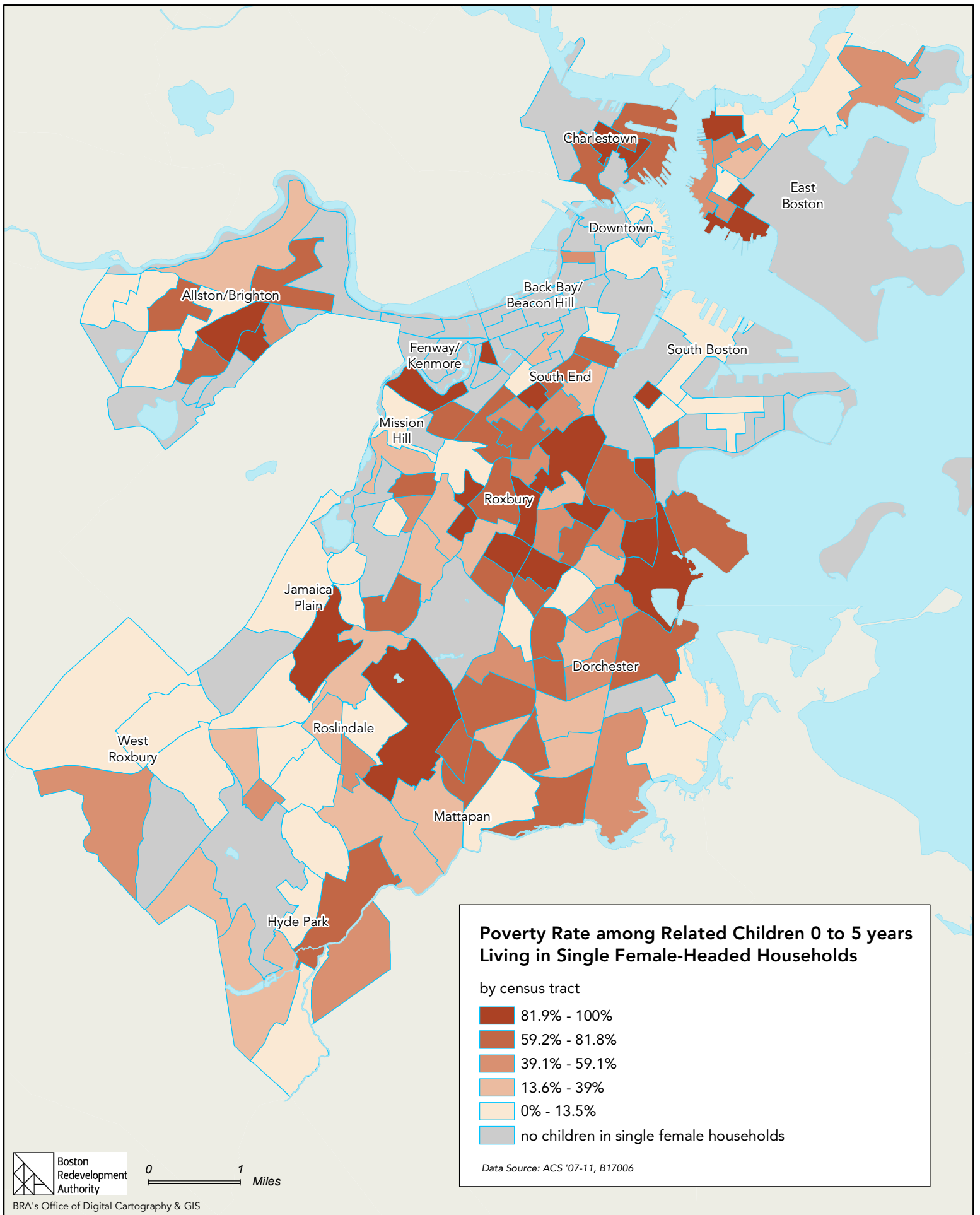
by census tract

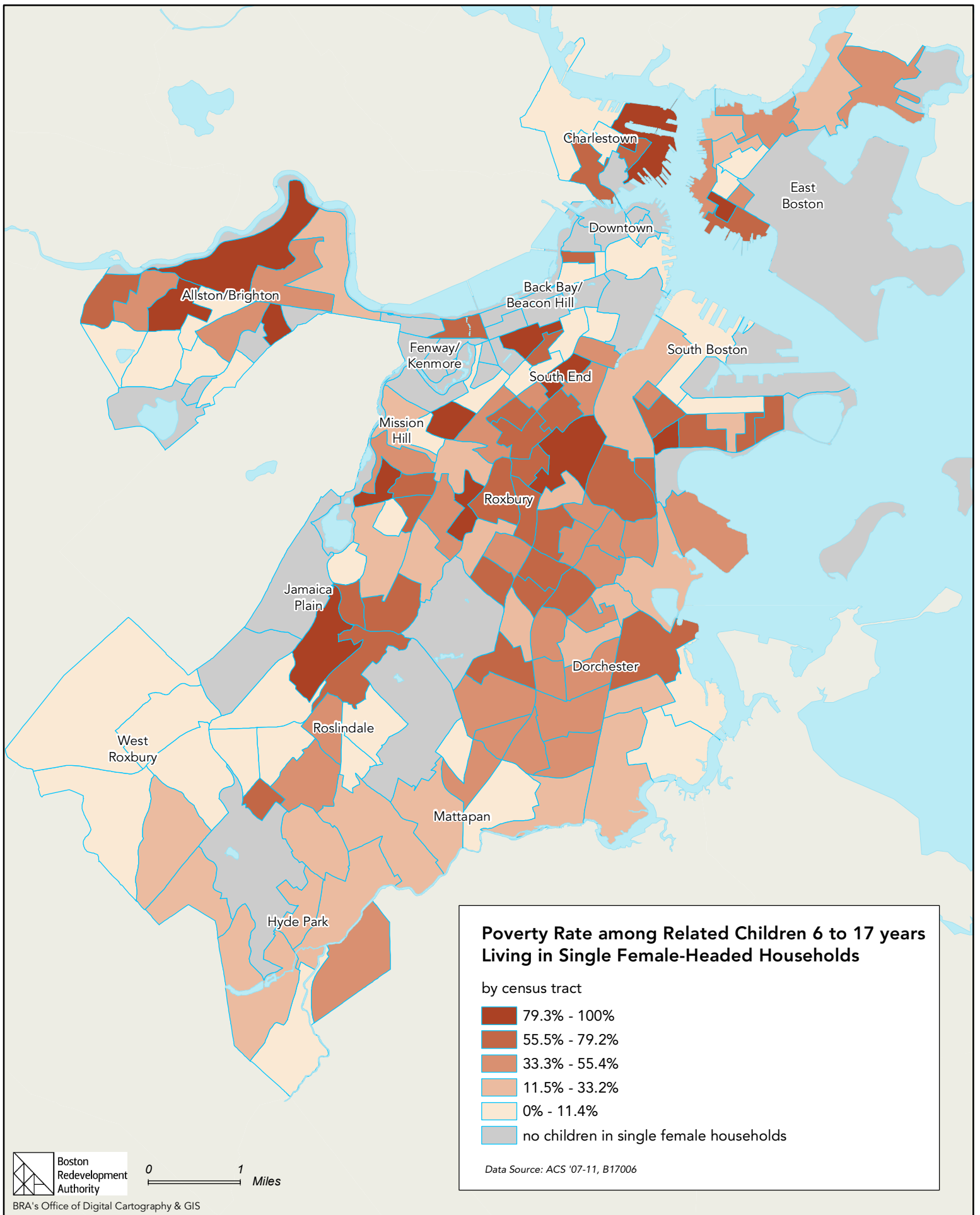
- 186 - 356
- 95 - 185
- 57 - 94
- 30 - 56
- 6 - 29
- none

Data Source: ACS '07-11, B17006

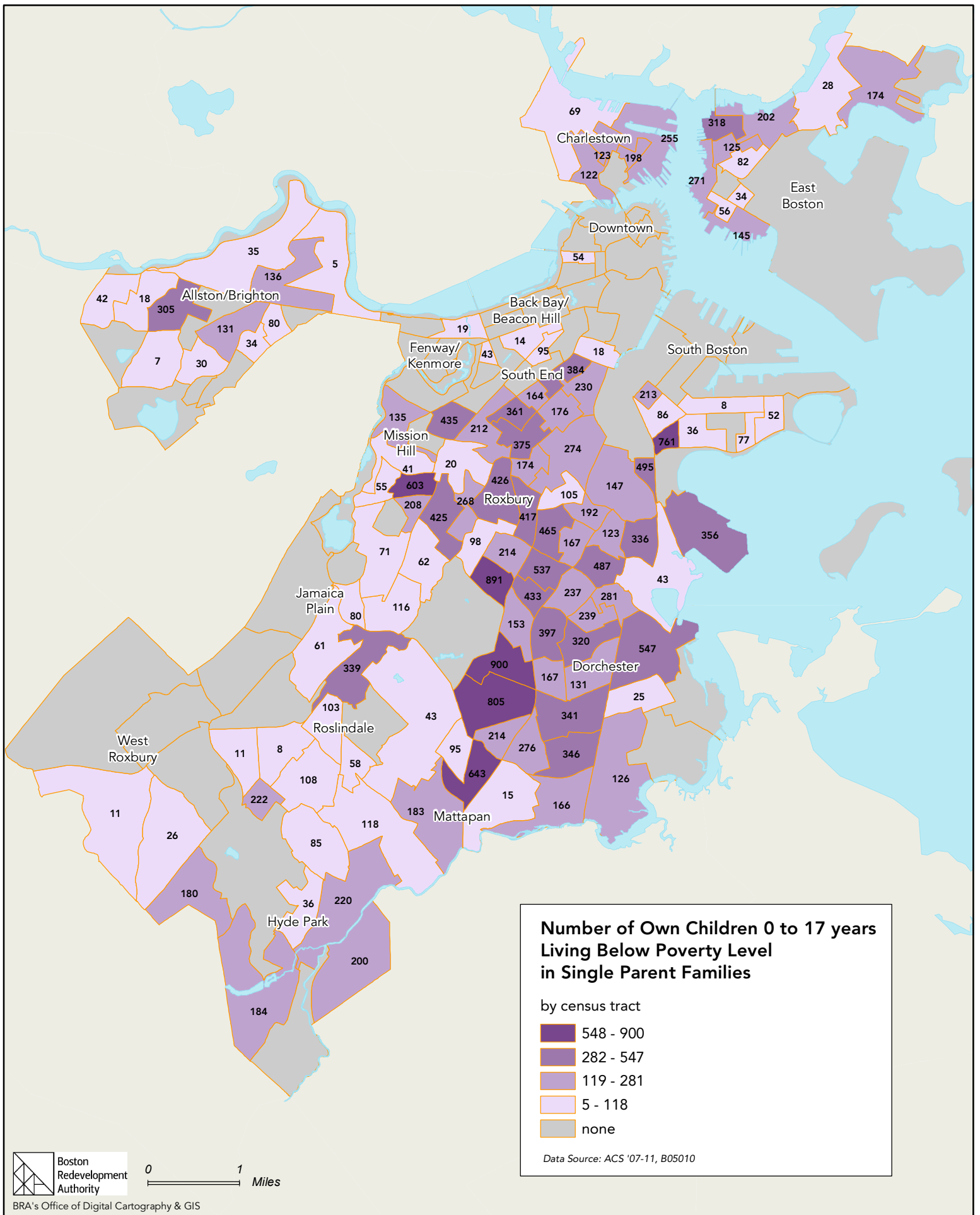


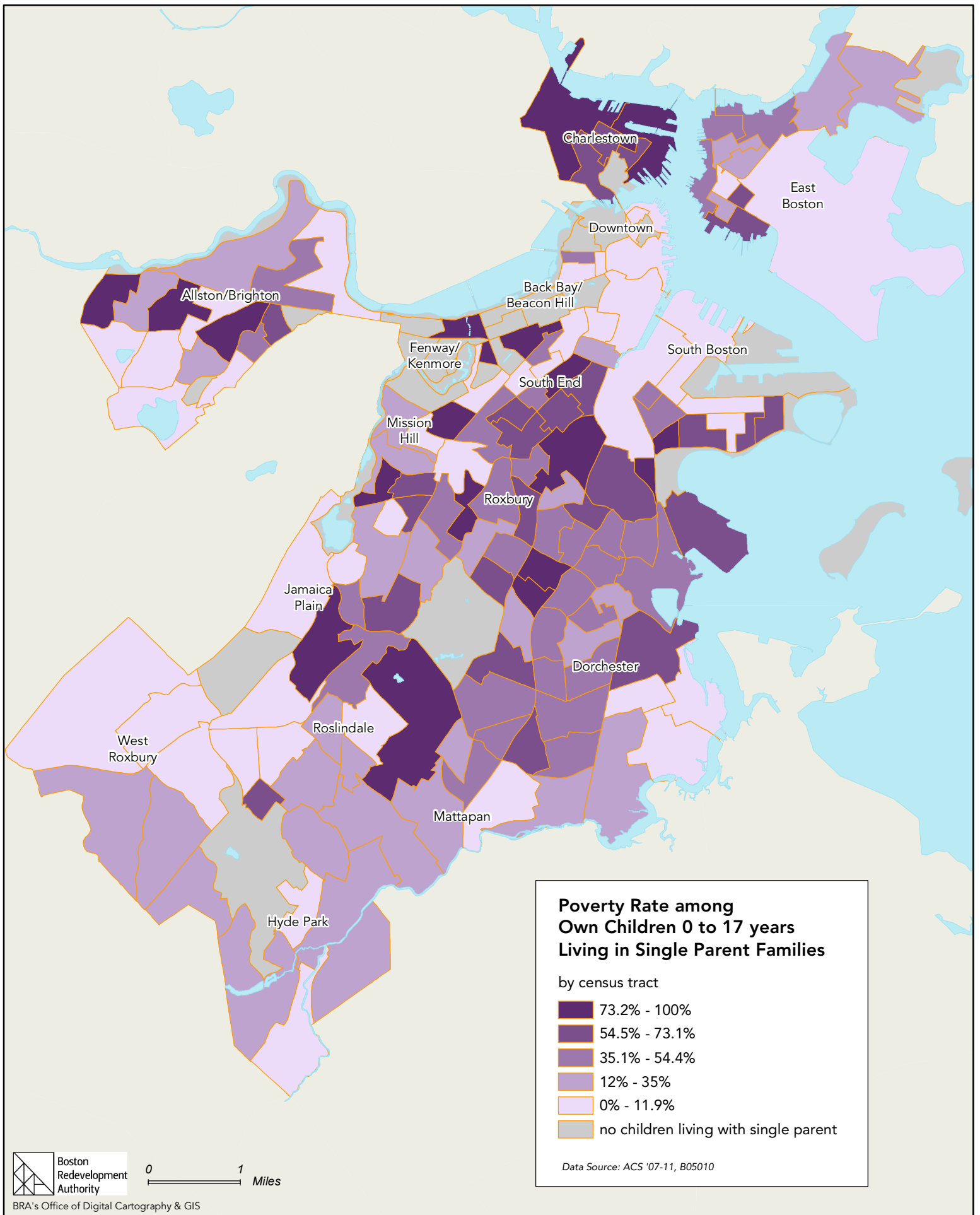






Own Children Living with One Parent





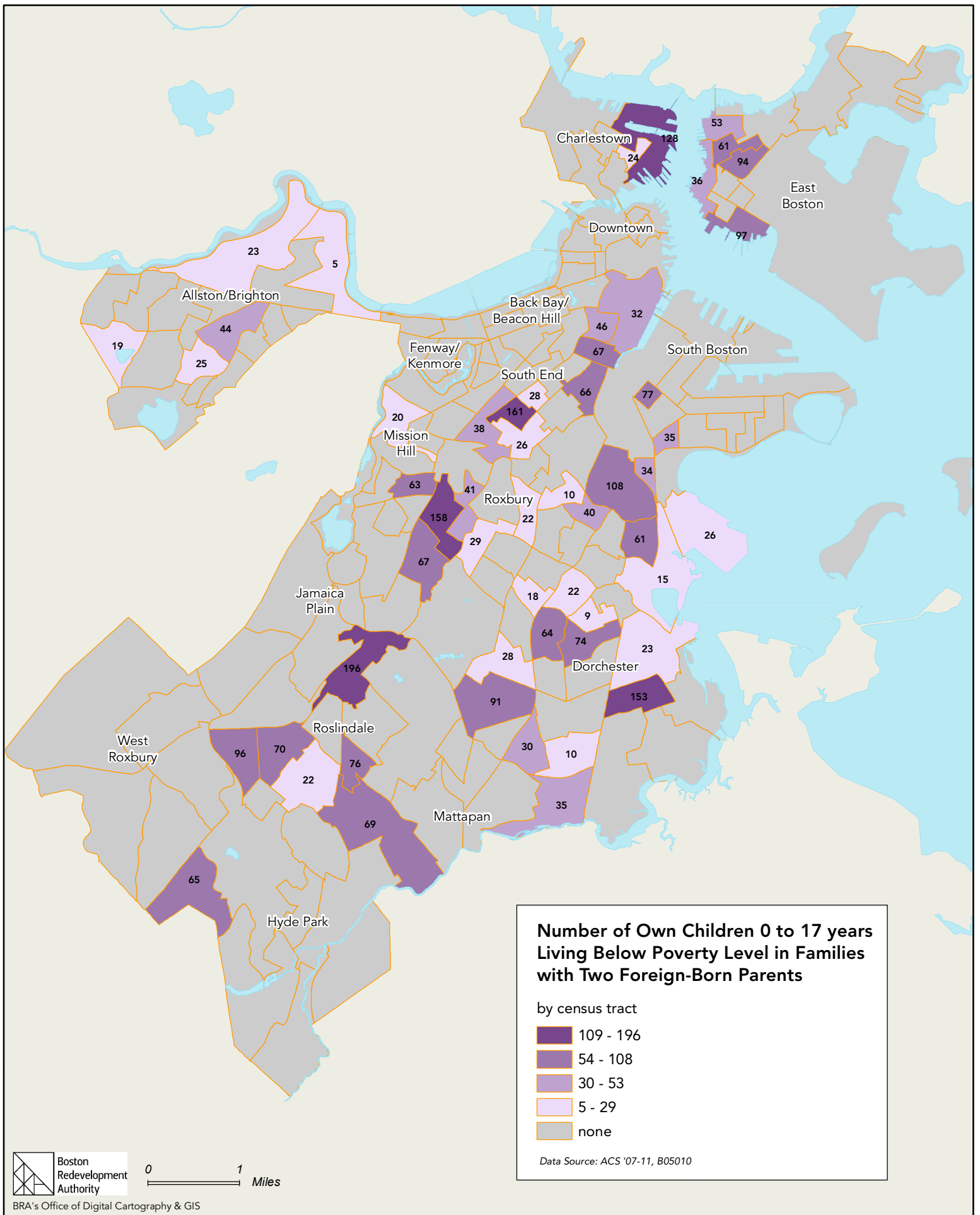
Poverty Rate among Own Children 0 to 17 years Living in Single Parent Families

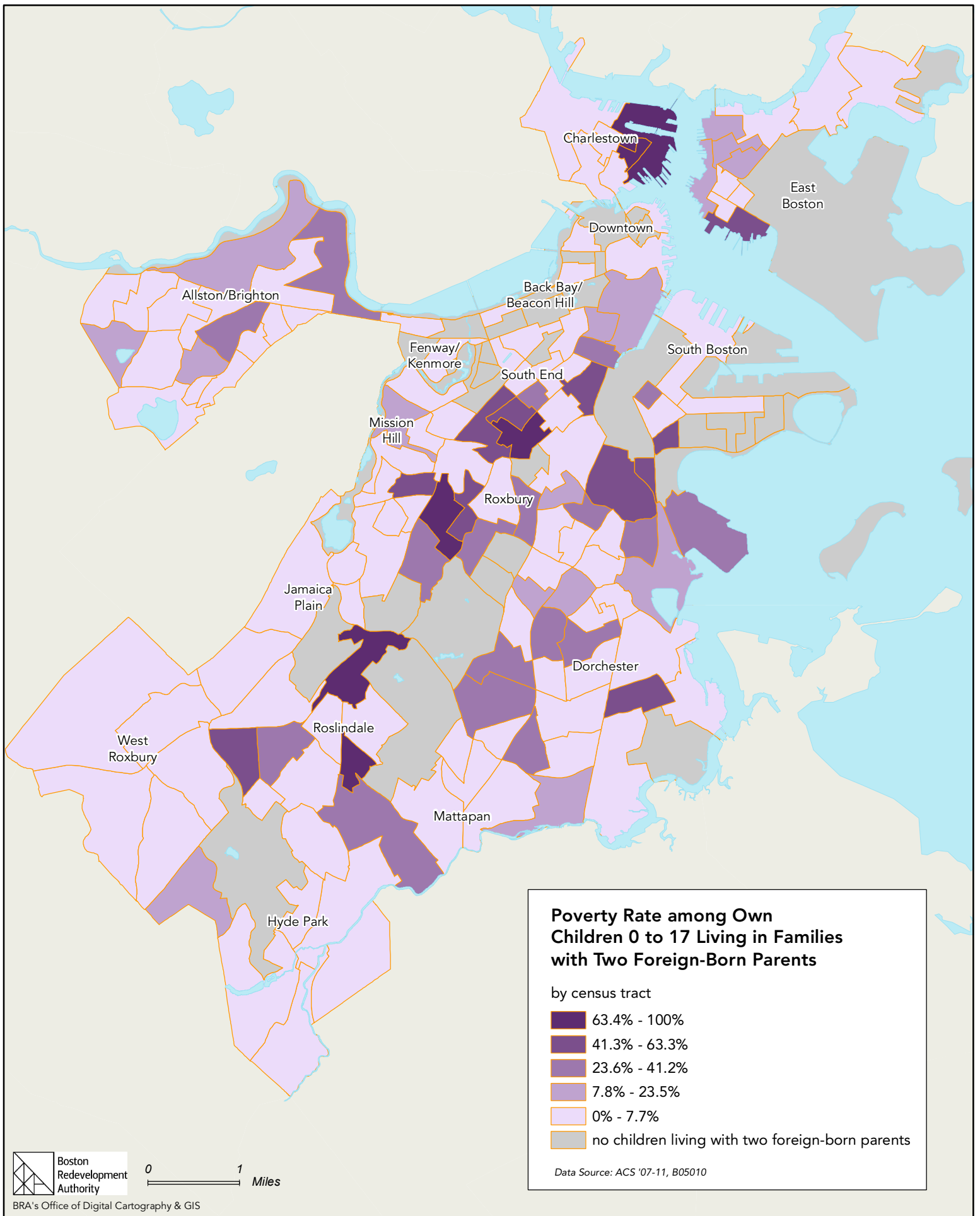
by census tract

- 73.2% - 100%
- 54.5% - 73.1%
- 35.1% - 54.4%
- 12% - 35%
- 0% - 11.9%
- no children living with single parent

Data Source: ACS '07-11, B05010

Own Children Living with Two Foreign Born Parents





Boston's Children

Complete Data Set

Part III

Boston Redevelopment Authority
Research Division
March 2014

Produced by the BRA Research Division:

Alvaro Lima – Director
Mark Melnik – Deputy Director

Kelly Dowd – Research Manager
Kevin Kang – Research Associate
Nicoya Borella – Research Assistant

Interns:
Chandana Cherukupalli
Gregory Watts

The BRA Research Division strives to understand the current environment of the city to produce quality research and targeted information that will inform and benefit the residents and businesses of Boston. The Division conducts research on Boston's economy, population, and commercial markets for all departments of the BRA, the City of Boston, and related organizations.

The information provided in this report is the best available at the time of its publication.

All or partial use of this report must be cited. Our preferred citation is as follows:
Boston Redevelopment Authority/Research Division, March 2014

For more information about research produced by the Boston Redevelopment Authority, please contact Kelly Dowd, Research Manager, by email at kelly.dowd@boston.gov or by telephone at (617) 918-4474.



City of Boston
Office of the Mayor
Martin J. Walsh

Boston's Children

This document is one of a three part report analyzing Boston's Children, their households, and their householders by selected characteristics.

Part I

Boston's Children

A summary of Boston's children age 0-17

Part II

Mapping Boston's Children in Poverty

Mapping children in poverty by selected demographic characteristics

Part III

Boston's Children: Complete Data Set

The complete collection of variable tables used to analyze children in Boston

Characteristics of Children in Boston

Children Ages 0-17

Sources: 2007-2011 American Community Survey, Public Use Microdata Sample, BRA Research Division Analysis

Race and Ethnicity	0-17 Year Olds		0-5 Year Olds		6-11 Year Olds		12-17 Year Olds	
	Estimate	%	Estimate	%	Estimate	%	Estimate	%
White	24,602	23.6%	11,104	29.8%	6,781	21.0%	6,717	19.3%
Black or African American	35,988	34.5%	11,122	29.9%	11,203	34.8%	13,663	39.2%
Hispanic	30,550	29.3%	10,261	27.6%	9,724	30.2%	10,565	30.3%
Asian	7,215	6.9%	2,522	6.8%	2,427	7.5%	2,266	6.5%
Some Other Race	2,372	2.3%	593	1.6%	937	2.9%	842	2.4%
Two or More Major Races	3,532	3.4%	1,621	4.4%	1,152	3.6%	759	2.2%
Total	104,259	100.0%	37,223	100.0%	32,224	100.0%	34,812	100.0%

Relationship to Householder	0-17 Year Olds		0-5 Year Olds		6-11 Year Olds		12-17 Year Olds	
	Estimate	%	Estimate	%	Estimate	%	Estimate	%
Reference person	56	0.1%	0	0.0%	0	0.0%	56	0.2%
Son/daughter	91,509	87.8%	32,814	88.2%	28,880	89.6%	29,815	85.6%
Brother/sister	869	0.8%	0	0.0%	346	1.1%	523	1.5%
Grandchild	7,182	6.9%	3,466	9.3%	1,922	6.0%	1,794	5.2%
Other relative	2,631	2.5%	778	2.1%	703	2.2%	1,150	3.3%
Roomer/boarder	61	0.1%	0	0.0%	25	0.1%	36	0.1%
Housemate/roommate	69	0.1%	0	0.0%	0	0.0%	69	0.2%
Unmarried partner	10	0.0%	0	0.0%	0	0.0%	10	0.0%
Foster child	288	0.3%	24	0.1%	39	0.1%	225	0.6%
Other Nonrelative	432	0.4%	91	0.2%	209	0.6%	132	0.4%
Institutionalized group quarters population	491	0.5%	0	0.0%	74	0.2%	417	1.2%
Noninstitutionalized group quarters population	661	0.6%	50	0.1%	26	0.1%	585	1.7%
Total	104,259	100.0%	37,223	100.0%	32,224	100.0%	34,812	100.0%

Poverty Level	0-17 Year Olds		0-5 Year Olds		6-11 Year Olds		12-17 Year Olds	
	Estimate	%	Estimate	%	Estimate	%	Estimate	%
Below or at Poverty Line	30,095	28.9%	10,026	26.9%	10,321	32.0%	9,748	28.0%
Above to Up to Two Times Above Poverty Line	22,812	21.9%	7,909	21.2%	6,973	21.6%	7,930	22.8%
Two Times to Up to Three Times Above Poverty Line	14,884	14.3%	5,115	13.7%	4,645	14.4%	5,124	14.7%
Three Times to Up to Four Times Above Poverty Line	10,821	10.4%	3,329	8.9%	3,601	11.2%	3,891	11.2%
Four or More Times Above Poverty Line	23,979	23.0%	10,679	28.7%	6,311	19.6%	6,989	20.1%
Missing	1,668	1.6%	165	0.4%	373	1.2%	1,130	3.2%
Total	104,259	100.0%	37,223	100.0%	32,224	100.0%	34,812	100.0%

Poverty Level of Non-White Children	0-17 Year Olds		0-5 Year Olds		6-11 Year Olds		12-17 Year Olds	
	Estimate	%	Estimate	%	Estimate	%	Estimate	%
Below or at Poverty Line	27,505	34.5%	8,991	34.4%	9,374	36.8%	9,140	32.5%
Above to Up to Two Times Above Poverty Line	20,664	25.9%	7,000	26.8%	6,350	25.0%	7,314	26.0%
Two Times to Up to Three Times Above Poverty Line	11,993	15.1%	4,075	15.6%	3,795	14.9%	4,123	14.7%
Three Times to Up to Four Times Above Poverty Line	7,415	9.3%	2,058	7.9%	2,454	9.6%	2,903	10.3%
Four or More Times Above Poverty Line	10,866	13.6%	3,830	14.7%	3,124	12.3%	3,912	13.9%
Missing	1,214	1.5%	165	0.6%	346	1.4%	703	2.5%
Total	79,657	100.0%	26,119	100.0%	25,443	100.0%	28,095	100.0%

Nativity	0-17 Year Olds		0-5 Year Olds		6-11 Year Olds		12-17 Year Olds	
	Estimate	%	Estimate	%	Estimate	%	Estimate	%
Native Born	95,187	91.3%	36,234	97.3%	29,587	91.8%	29,366	84.4%
Foreign Born	9,072	8.7%	989	2.7%	2,637	8.2%	5,446	15.6%
Total	104,259	100.0%	37,223	100.0%	32,224	100.0%	34,812	100.0%

Nativity of Parents	0-17 Year Olds		0-5 Year Olds		6-11 Year Olds		12-17 Year Olds	
	Estimate	%	Estimate	%	Estimate	%	Estimate	%
<u>Two Parent Households</u>								
Both Parents Native	18,143	41.5%	8,764	47.6%	4,671	36.6%	4,708	37.6%
One Parent Foreign Born	7,213	16.5%	3,063	16.6%	2,368	18.5%	1,782	14.2%
Both Parents Foreign Born	18,373	42.0%	6,593	35.8%	5,733	44.9%	6,047	48.2%
Total	43,729	100.0%	18,420	100.0%	12,772	100.0%	12,537	100.0%
<u>One Parent Households</u>								
Parent Native	34,312	63.2%	12,062	67.0%	10,701	60.4%	11,549	62.1%
Parent Foreign Born	20,011	36.8%	5,942	33.0%	7,025	39.6%	7,044	37.9%
Total	54,323	100.0%	18,004	100.0%	17,726	100.0%	18,593	100.0%
<u>All Household Types</u>								
Two Parent Household, Both Parents Native	18,143	18.5%	8,764	24.1%	4,671	15.3%	4,708	15.1%
Two Parent Household, One Parent Foreign Born	7,213	7.4%	3,063	8.4%	2,368	7.8%	1,782	5.7%
Two Parent Household, Both Parents Foreign Born	18,373	18.7%	6,593	18.1%	5,733	18.8%	6,047	19.4%
One Parent Household, Parent Native	34,312	35.0%	12,062	33.1%	10,701	35.1%	11,549	37.1%
One Parent Household, Parent Foreign Born	20,011	20.4%	5,942	16.3%	7,025	23.0%	7,044	22.6%
Total	98,052	100.0%	36,424	100.0%	30,498	100.0%	31,130	100.0%

Grade Level Attending	0-17 Year Olds		0-5 Year Olds		6-11 Year Olds		12-17 Year Olds	
	Estimate	%	Estimate	%	Estimate	%	Estimate	%
Not Attending School	26,446	25.4%	24,429	65.6%	639	2.0%	1,378	4.0%
Nursery School/preschool	7,865	7.5%	7,773	20.9%	92	0.3%	0	0.0%
Kindergarten	7,672	7.4%	4,816	12.9%	2,856	8.9%	0	0.0%
Grade 1 to 4	21,553	20.7%	205	0.6%	21,317	66.2%	31	0.1%
Grade 5 to 8	22,006	21.1%	0	0.0%	7,320	22.7%	14,686	42.2%
Grade 9 to grade 12	17,975	17.2%	0	0.0%	0	0.0%	17,975	51.6%
College undergraduate	742	0.7%	0	0.0%	0	0.0%	742	2.1%
Total	104,259	100.0%	37,223	100.0%	32,224	100.0%	34,812	100.0%

Race and Ethnicity of Children Enrolled In School	0-17 Year Olds		0-5 Year Olds		6-11 Year Olds		12-17 Year Olds	
	Estimate	%	Estimate	%	Estimate	%	Estimate	%
White	16,690	21.4%	3,631	28.4%	6,645	21.0%	6,414	19.2%
Black or African American	28,443	36.6%	4,335	33.9%	10,956	34.7%	13,152	39.3%
Hispanic	23,075	29.7%	3,405	26.6%	9,539	30.2%	10,131	30.3%
Asian	5,331	6.9%	752	5.9%	2,398	7.6%	2,181	6.5%
Some Other Race	1,945	2.5%	166	1.3%	937	3.0%	842	2.5%
Two or More Major Races	2,329	3.0%	505	3.9%	1,110	3.5%	714	2.1%
Total	77,813	100.0%	12,794	100.0%	31,585	100.0%	33,434	100.0%

Race and Ethnicity of Children In Public School	0-17 Year Olds		0-5 Year Olds		6-11 Year Olds		12-17 Year Olds	
	Estimate	%	Estimate	%	Estimate	%	Estimate	%
White	8,604	14.1%	1,338	16.2%	3,298	12.8%	3,968	14.6%
Black or African American	24,331	39.8%	3,470	42.0%	9,788	38.1%	11,073	40.8%
Hispanic	20,379	33.4%	2,653	32.1%	8,816	34.3%	8,910	32.8%
Asian	4,509	7.4%	519	6.3%	1,996	7.8%	1,994	7.4%
Some Other Race	1,743	2.9%	110	1.3%	884	3.4%	749	2.8%
Two or More Major Races	1,533	2.5%	165	2.0%	938	3.6%	430	1.6%
Total	61,099	100.0%	8,255	100.0%	25,720	100.0%	27,124	100.0%

Race and Ethnicity of Children In Private School	0-17 Year Olds		0-5 Year Olds		6-11 Year Olds		12-17 Year Olds	
	Estimate	%	Estimate	%	Estimate	%	Estimate	%
White	8,086	48.4%	2,293	50.5%	3,347	57.1%	2,446	38.8%
Black or African American	4,112	24.6%	865	19.1%	1,168	19.9%	2,079	32.9%
Hispanic	2,696	16.1%	752	16.6%	723	12.3%	1,221	19.4%
Asian	822	4.9%	233	5.1%	402	6.9%	187	3.0%
Some Other Race	202	1.2%	56	1.2%	53	0.9%	93	1.5%
Two or More Major Races	796	4.8%	340	7.5%	172	2.9%	284	4.5%
Total	16,714	100.0%	4,539	100.0%	5,865	100.0%	6,310	100.0%

Poverty Level of Children in Public School	0-17 Year Olds		0-5 Year Olds		6-11 Year Olds		12-17 Year Olds	
	Estimate	%	Estimate	%	Estimate	%	Estimate	%
Below or at Poverty Line	21,185	34.7%	3,374	40.9%	9,538	37.1%	8,273	30.5%
Above to Up to Two Times Above Poverty Line	14,880	24.4%	1,967	23.8%	6,228	24.2%	6,685	24.6%
Two Times to Up to Three Times Above Poverty Line	9,214	15.1%	1,088	13.2%	3,890	15.1%	4,236	15.6%
Three Times to Up to Four Times Above Poverty Line	6,260	10.2%	795	9.6%	2,555	9.9%	2,910	10.7%
Four or More Times Above Poverty Line	8,804	14.4%	996	12.1%	3,220	12.5%	4,588	16.9%
Missing	756	1.2%	35	0.4%	289	1.1%	432	1.6%
Total	61,099	100.0%	8,255	100.0%	25,720	100.0%	27,124	100.0%

Poverty Level of Children in Private School	0-17 Year Olds		0-5 Year Olds		6-11 Year Olds		12-17 Year Olds	
	Estimate	%	Estimate	%	Estimate	%	Estimate	%
Below or at Poverty Line	1,877	11.2%	334	7.4%	579	9.9%	964	15.3%
Above to Up to Two Times Above Poverty Line	2,364	14.1%	927	20.4%	632	10.8%	805	12.8%
Two Times to Up to Three Times Above Poverty Line	2,049	12.3%	506	11.1%	746	12.7%	797	12.6%
Three Times to Up to Four Times Above Poverty Line	2,067	12.4%	360	7.9%	912	15.5%	795	12.6%
Four or More Times Above Poverty Line	7,662	45.8%	2,412	53.1%	2,948	50.3%	2,302	36.5%
Missing	695	4.2%	0	0.0%	48	0.8%	647	10.3%
Total	16,714	100.0%	4,539	100.0%	5,865	100.0%	6,310	100.0%

Employment Status of Parents	0-17 Year Olds		0-5 Year Olds		6-11 Year Olds		12-17 Year Olds	
	Estimate	%	Estimate	%	Estimate	%	Estimate	%
<u>Living with Both Parents</u>								
Both parents in labor force	30,686	70.2%	12,913	70.1%	9,003	70.5%	8,770	70.0%
Father only in labor force	10,150	23.2%	4,688	25.5%	2,970	23.3%	2,492	19.9%
Mother only in labor force	2,204	5.0%	544	3.0%	699	5.5%	961	7.7%
Neither parent in labor force	689	1.6%	275	1.5%	100	0.8%	314	2.5%
Total	43,729	100.0%	18,420	100.0%	12,772	100.0%	12,537	100.0%

<u>Living with One Parent</u>								
Father in the labor force	6,213	11.4%	1,915	10.6%	1,974	11.1%	2,324	12.5%
Father not in labor force	798	1.5%	202	1.1%	318	1.8%	278	1.5%
Mother in the labor force	34,672	63.8%	11,238	62.4%	11,368	64.1%	12,066	64.9%
Mother not in labor force	12,640	23.3%	4,649	25.8%	4,066	22.9%	3,925	21.1%
Total	54,323	100.0%	18,004	100.0%	17,726	100.0%	18,593	100.0%
<u>All Household Types</u>								
Two Parent Household, Both parents in labor force	30,686	31.3%	12,913	35.5%	9,003	29.5%	8,770	28.2%
Two Parent Household, Father only in labor force	10,150	10.4%	4,688	12.9%	2,970	9.7%	2,492	8.0%
Two Parent Household, Mother only in labor force	2,204	2.2%	544	1.5%	699	2.3%	961	3.1%
Two Parent Household, Neither parent in labor force	689	0.7%	275	0.8%	100	0.3%	314	1.0%
One Parent Household, Father in the labor force	6,213	6.3%	1,915	5.3%	1,974	6.5%	2,324	7.5%
One Parent Household, Father not in labor force	798	0.8%	202	0.6%	318	1.0%	278	0.9%
One Parent Household, Mother in the labor force	34,672	35.4%	11,238	30.9%	11,368	37.3%	12,066	38.8%
One Parent Household, Mother not in labor force	12,640	12.9%	4,649	12.8%	4,066	13.3%	3,925	12.6%
Total	98,052	100.0%	36,424	100.0%	30,498	100.0%	31,130	100.0%

Race/Ethnicity for Children Living in Two Parent Households	0-17 Year Olds		0-5 Year Olds		6-11 Year Olds		12-17 Year Olds	
	Estimate	%	Estimate	%	Estimate	%	Estimate	%
White	18,102	41.4%	9,214	50.0%	4,757	37.2%	4,131	33.0%
Black or African American	9,454	21.6%	3,140	17.0%	2,847	22.3%	3,467	27.7%
Hispanic	8,357	19.1%	2,724	14.8%	2,575	20.2%	3,058	24.4%
Asian	5,051	11.6%	2,131	11.6%	1,703	13.3%	1,217	9.7%
Some Other Race	1,061	2.4%	254	1.4%	428	3.4%	379	3.0%
Two or More Major Races	1,704	3.9%	957	5.2%	462	3.6%	285	2.3%
Total	43,729	100.0%	18,420	100.0%	12,772	100.0%	12,537	100.0%

Race/Ethnicity for Children Living in One Parent Households	0-17 Year Olds		0-5 Year Olds		6-11 Year Olds		12-17 Year Olds	
	Estimate	%	Estimate	%	Estimate	%	Estimate	%
White	5,694	10.5%	1,836	10.2%	1,899	10.7%	1,959	10.5%
Black or African American	23,795	43.8%	7,846	43.6%	7,547	42.6%	8,402	45.2%
Hispanic	20,351	37.5%	7,149	39.7%	6,565	37.0%	6,637	35.7%
Asian	1,742	3.2%	300	1.7%	623	3.5%	819	4.4%
Some Other Race	1,172	2.2%	318	1.8%	448	2.5%	406	2.2%
Two or More Major Races	1,569	2.9%	555	3.1%	644	3.6%	370	2.0%
Total	54,323	100.0%	18,004	100.0%	17,726	100.0%	18,593	100.0%

Sources: 2007-2011 American Community Survey, Public Use Microdata Sample, BRA Research Division Analysis

Characteristics of Households with Children in Boston

Children Ages 0-17

Sources: 2007-2011 American Community Survey, Public Use Microdata Sample, BRA Research Division Analysis

Household Income	With Children 0-17		With Children 0-5		With Children 6-11		With Children 12-17	
	Estimate	%	Estimate	%	Estimate	%	Estimate	%
\$0 to \$11,175	7,721	13.1%	4,042	14.3%	3,988	15.8%	3,304	12.6%
\$11,176 to \$22,350	7,748	13.2%	3,374	11.9%	4,118	16.3%	3,722	14.2%
\$22,351 to \$50,000	15,009	25.5%	6,890	24.3%	6,261	24.7%	7,076	26.9%
\$50,001 to \$75,000	8,254	14.0%	3,811	13.5%	3,843	15.2%	3,830	14.6%
\$75,001 or Higher	20,123	34.2%	10,190	36.0%	7,090	28.0%	8,336	31.7%
Total	58,855	100.0%	28,307	100.0%	25,300	100.0%	26,268	100.0%

Household Income-For Households with Two Parents	With Children 0-17		With Children 0-5		With Children 6-11		With Children 12-17	
	Estimate	%	Estimate	%	Estimate	%	Estimate	%
\$0 to \$11,175	535	2.0%	391	2.7%	172	1.6%	139	1.3%
\$11,176 to \$22,350	1,685	6.3%	915	6.2%	813	7.8%	636	6.1%
\$22,351 to \$50,000	4,795	17.9%	2,487	17.0%	2,012	19.2%	1,899	18.1%
\$50,001 to \$75,000	4,269	15.9%	2,154	14.7%	2,058	19.7%	1,898	18.1%
\$75,001 or Higher	15,508	57.9%	8,698	59.4%	5,410	51.7%	5,916	56.4%
Total	26,792	100.0%	14,645	100.0%	10,465	100.0%	10,488	100.0%

Household Income-For Households with One Parent	With Children 0-17		With Children 0-5		With Children 6-11		With Children 12-17	
	Estimate	%	Estimate	%	Estimate	%	Estimate	%
\$0 to \$11,175	7,186	22.4%	3,651	26.7%	3,816	25.7%	3,165	20.1%
\$11,176 to \$22,350	6,063	18.9%	2,459	18.0%	3,305	22.3%	3,086	19.6%
\$22,351 to \$50,000	10,214	31.9%	4,403	32.2%	4,249	28.6%	5,177	32.8%
\$50,001 to \$75,000	3,985	12.4%	1,657	12.1%	1,785	12.0%	1,932	12.2%
\$75,001 or Higher	4,615	14.4%	1,492	10.9%	1,680	11.3%	2,420	15.3%
Total	32,063	100.0%	13,662	100.0%	14,835	100.0%	15,780	100.0%

Household Family Type & Labor Force Status of Households	With Children 0-17		With Children 0-5		With Children 6-11		With Children 12-17	
	Estimate	%	Estimate	%	Estimate	%	Estimate	%
Married-couple family: Husband and wife in LF	18,891	32.1%	10,225	36.1%	7,567	29.9%	7,326	27.9%
Married-couple family: Husband in labor force, wife not in LF	5,624	9.6%	3,433	12.1%	2,133	8.4%	2,010	7.7%
Married-couple family: Husband not in LF, wife in LF	1,685	2.9%	630	2.2%	657	2.6%	892	3.4%
Married-couple family: Neither husband nor wife in LF	592	1.0%	357	1.3%	108	0.4%	260	1.0%
Other family: Male householder, no wife present, in LF	4,495	7.6%	1,921	6.8%	1,627	6.4%	1,917	7.3%
Other family: Male householder, no wife present, not in LF	694	1.2%	233	0.8%	312	1.2%	283	1.1%
Other family: Female householder, no husband present, in LF	19,525	33.2%	8,393	29.6%	9,248	36.6%	9,778	37.2%
Other family: Female householder, no husband present, not in LF	7,016	11.9%	3,115	11.0%	3,549	14.0%	3,507	13.4%
N/A (GQ/vacant/non-family household)	333	0.6%	0	0.0%	99	0.4%	295	1.1%
Total	58,855	100.0%	28,307	100.0%	25,300	100.0%	26,268	100.0%

Linguistically Isolated Households	With Children 0-17		With Children 0-5		With Children 6-11		With Children 12-17	
	Estimate	%	Estimate	%	Estimate	%	Estimate	%
Not Linguistically Isolated	51,026	86.7%	23,548	83.2%	21,242	84.0%	24,208	92.2%
Linguistically Isolated	7,829	13.3%	4,759	16.8%	4,058	16.0%	2,060	7.8%
Total	58,855	100.0%	28,307	100.0%	25,300	100.0%	26,268	100.0%

All Linguistically Isolated Households	Boston	
	Estimate	%
Not Linguistically Isolated	219,265	88.5%
Linguistically Isolated	28,354	11.5%
Total	247,619	100.0%

Number of Workers in the Family in the Last 12 Months	With Children 0-17		With Children 0-5		With Children 6-11		With Children 12-17	
	Estimate	%	Estimate	%	Estimate	%	Estimate	%
No Workers	6,149	10.4%	3,162	11.2%	3,319	13.1%	2,840	10.8%
1 Worker	23,998	40.8%	11,863	41.9%	11,099	43.9%	9,852	37.5%
2 Workers	21,482	36.5%	11,233	39.7%	8,502	33.6%	8,637	32.9%
3 or more workers in family	6,893	11.7%	2,049	7.2%	2,281	9.0%	4,644	17.7%
N/A (GQ/vacant/non-family household)	333	0.6%	0	0.0%	99	0.4%	295	1.1%
Total	58,855	100.0%	28,307	100.0%	25,300	100.0%	26,268	100.0%

Household Presence and Age of Children	With Children 0-17	
	Frequency	%
With children under 6 years only	16,739	6.8%
With children 6 to 17 years only	30,515	12.3%
With children under 6 years and 6 to 17 years	11,568	4.7%
No children	188,797	76.2%
Total	247,619	100.0%

Sources: 2007-2011 American Community Survey, Public Use Microdata Sample, BRA Research Division Analysis

Characteristics of Householders with Children in Boston

Children Ages 0-17

Sources: 2007-2011 American Community Survey, Public Use Microdata Sample, BRA Research Division Analysis

Race/Ethnicity of Householder	With Children 0-17		With Children 0-5		With Children 6-11		With Children 12-17	
	Estimate	%	Estimate	%	Estimate	%	Estimate	%
White	17,303	29.4%	9,427	33.3%	6,475	25.6%	6,024	22.9%
Black or African American	18,982	32.3%	7,884	27.9%	8,543	33.8%	10,238	39.0%
Hispanic	15,602	26.5%	7,545	26.7%	7,416	29.3%	7,093	27.0%
Asian	4,797	8.2%	2,463	8.7%	1,863	7.4%	1,871	7.1%
Some Other Race	1,277	2.2%	541	1.9%	657	2.6%	691	2.6%
Two or More Major Races	894	1.5%	447	1.6%	346	1.4%	351	1.3%
Total	58,855	100.0%	28,307	100.0%	25,300	100.0%	26,268	100.0%

Sex	With Children 0-17		With Children 0-5		With Children 6-11		With Children 12-17	
	Estimate	%	Estimate	%	Estimate	%	Estimate	%
Male	21,469	36.5%	11,142	39.4%	7,917	31.3%	8,421	32.1%
Female	37,386	63.5%	17,165	60.6%	17,383	68.7%	17,847	67.9%
Total	58,855	100.0%	28,307	100.0%	25,300	100.0%	26,268	100.0%

Marital Status	With Children 0-17		With Children 0-5		With Children 6-11		With Children 12-17	
	Estimate	%	Estimate	%	Estimate	%	Estimate	%
Married	28,821	49.0%	15,430	54.5%	11,590	45.8%	11,616	44.2%
Widowed	1,645	2.8%	431	1.5%	539	2.1%	1,157	4.4%
Divorced	6,738	11.4%	2,067	7.3%	2,930	11.6%	3,937	15.0%
Separated	3,439	5.8%	1,170	4.1%	1,705	6.7%	2,054	7.8%
Never Married	18,212	30.9%	9,209	32.5%	8,536	33.7%	7,504	28.6%
Total	58,855	100.0%	28,307	100.0%	25,300	100.0%	26,268	100.0%

Age	With Children 0-17		With Children 0-5		With Children 6-11		With Children 12-17	
	Estimate	%	Estimate	%	Estimate	%	Estimate	%
21 or less	778	1.3%	560	2.0%	61	0.2%	226	0.9%
22 to 25	2,386	4.1%	2,158	7.6%	628	2.5%	41	0.2%
26 to 30	6,874	11.7%	5,411	19.1%	3,385	13.4%	718	2.7%
31 to 35	9,634	16.4%	6,518	23.0%	4,533	17.9%	3,171	12.1%
36 to 40	11,003	18.7%	5,882	20.8%	5,225	20.7%	4,735	18.0%
41 to 50	18,317	31.1%	5,229	18.5%	8,364	33.1%	11,054	42.1%
51 and Over	9,863	16.8%	2,479	8.8%	3,104	12.3%	6,323	24.1%
Total	58,855	100.0%	28,307	100.0%	25,300	100.0%	26,268	100.0%

Nativity	With Children 0-17		With Children 0-5		With Children 6-11		With Children 12-17	
	Estimate	%	Estimate	%	Estimate	%	Estimate	%
Native Born	34,218	58.1%	16,352	57.8%	13,995	55.3%	14,904	56.7%
Foreign Born	24,637	41.9%	11,955	42.2%	11,305	44.7%	11,364	43.3%
Total	58,855	100.0%	28,307	100.0%	25,300	100.0%	26,268	100.0%

Ability to Speak English	With Children 0-17		With Children 0-5		With Children 6-11		With Children 12-17	
	Estimate	%	Estimate	%	Estimate	%	Estimate	%
English Proficient	50,673	86.1%	24,875	87.9%	21,268	84.1%	22,087	84.1%
Limited English Proficiency	8,182	13.9%	3,432	12.1%	4,032	15.9%	4,181	15.9%
Total	58,855	100.0%	28,307	100.0%	25,300	100.0%	26,268	100.0%

School Enrollment	With Children 0-17		With Children 0-5		With Children 6-11		With Children 12-17	
	Estimate	%	Estimate	%	Estimate	%	Estimate	%
Not Attending School	54,594	92.8%	25,884	91.4%	23,356	92.3%	24,537	93.4%
Currently In School	4,261	7.2%	2,423	8.6%	1,944	7.7%	1,731	6.6%
Grade 5 to grade 8	39	0.1%	39	0.1%	0	0.0%	39	0.1%
Grade 9 to grade 12	586	1.0%	382	1.3%	405	1.6%	239	0.9%
College undergraduate	2,795	4.7%	1,501	5.3%	1,235	4.9%	1,225	4.7%
Graduate or professional school	841	1.4%	501	1.8%	304	1.2%	228	0.9%
Total	58,855	100.0%	28,307	100.0%	25,300	100.0%	26,268	100.0%

Educational Attainment	With Children 0-17		With Children 0-5		With Children 6-11		With Children 12-17	
	Estimate	%	Estimate	%	Estimate	%	Estimate	%
8th Grade or less	4,487	7.6%	2,035	7.2%	2,160	8.5%	2,413	9.2%
Less than High School	5,830	9.9%	2,654	9.4%	3,246	12.8%	3,052	11.6%
High School Graduate	15,667	26.6%	6,511	23.0%	6,764	26.7%	8,065	30.7%
Some College	11,140	18.9%	5,343	18.9%	5,634	22.3%	4,577	17.4%
Associate's Degree	4,054	6.9%	1,681	5.9%	1,815	7.2%	2,057	7.8%
Bachelor's Degree	9,264	15.7%	4,728	16.7%	3,288	13.0%	3,735	14.2%
Graduate Degree	8,413	14.3%	5,355	18.9%	2,393	9.5%	2,369	9.0%
Total	58,855	100.0%	28,307	100.0%	25,300	100.0%	26,268	100.0%

Year of Entry of Foreign Born Householders	With Children 0-17		With Children 0-5		With Children 6-11		With Children 12-17	
	Estimate	%	Estimate	%	Estimate	%	Estimate	%
Before 1970	1,447	5.3%	430	3.3%	590	4.6%	762	5.9%
1970-1979	1,994	7.2%	591	4.6%	642	5.0%	1,212	9.4%
1980-1989	7,825	28.4%	2,868	22.3%	3,699	29.1%	4,545	35.4%
1990-1999	9,917	36.0%	4,908	38.1%	5,616	44.1%	4,400	34.3%
After 2000	6,330	23.0%	4,070	31.6%	2,185	17.2%	1,923	15.0%
Total	27,513	100.0%	12,867	100.0%	12,732	100.0%	12,842	100.0%

Language Spoken at Home	With Children 0-17		With Children 0-5		With Children 6-11		With Children 12-17				
	Estimate	%	Estimate	%	Estimate	%	Estimate	%			
English	30,252	51.4%	English	14,061	49.7%	English	12,487	49.4%	English	13,446	51.2%
Spanish	15,179	25.8%	Spanish	7,394	26.1%	Spanish	7,107	28.1%	Spanish	6,757	25.7%
French Creole	3,188	5.4%	French Creole	1,534	5.4%	French Creole	1,376	5.4%	French Creole	1,656	6.3%
Portuguese	1,610	2.7%	Portuguese	830	2.9%	Portuguese	765	3.0%	Vietnamese	880	3.4%
Vietnamese	1,499	2.5%	Chinese	726	2.6%	Vietnamese	587	2.3%	Portuguese	797	3.0%
Chinese	1,291	2.2%	Vietnamese	703	2.5%	Chinese	523	2.1%	French	536	2.0%
French	1,001	1.7%	French	431	1.5%	French	448	1.8%	Chinese	314	1.2%
Cantonese	509	0.9%	Kru, Ibo, Yoruba	285	1.0%	Cushite	185	0.7%	Cantonese	286	1.1%
Kru, Ibo, Yoruba	498	0.8%	Russian	217	0.8%	Cantonese	183	0.7%	Kru, Ibo, Yoruba	264	1.0%
Italian	359	0.6%	Italian	210	0.7%	Arabic	162	0.6%	Cushite	203	0.8%
Other	3,469	5.9%	Other	1,916	6.8%	Other	1,477	5.8%	Other	1,129	4.3%
Total	58,855	100.0%	Total	28,307	100.0%	Total	25,300	100.0%	Total	26,268	100.0%

Place of Birth

	With Children 0-17		With Children 0-5		With Children 6-11		With Children 12-17				
	Estimate	%	Estimate	%	Estimate	%	Estimate	%			
Born Inside US	33,760	57.4%	Born Inside US	16,149	57.0%	Born Inside US	13,705	54.2%	Born Inside US	14,761	56.2%
Dominican Republic	4,468	7.6%	Dominican Republic	2,285	8.1%	Dominican Republic	2,383	9.4%	Dominican Republic	2,149	8.2%
Haiti	2,800	4.8%	Haiti	1,001	3.5%	Haiti	1,266	5.0%	Haiti	1,576	6.0%
China	1,656	2.8%	China	807	2.9%	Cape Verde	738	2.9%	Vietnam	873	3.3%
Vietnam	1,516	2.6%	Vietnam	720	2.5%	El Salvador	630	2.5%	Cape Verde	753	2.9%
Cape Verde	1,409	2.4%	Cape Verde	707	2.5%	Vietnam	604	2.4%	Jamaica	612	2.3%
El Salvador	1,193	2.0%	El Salvador	621	2.2%	China	598	2.4%	China	581	2.2%
Jamaica	1,120	1.9%	Guatemala	488	1.7%	Jamaica	533	2.1%	Trinidad & Tobago	473	1.8%
Colombia	898	1.5%	Colombia	418	1.5%	Guatemala	518	2.0%	El Salvador	371	1.4%
Guatemala	894	1.5%	Trinidad and Tobago	369	1.3%	Colombia	400	1.6%	Guatemala	348	1.3%
Other	9,141	15.5%	Other	4,742	16.8%	Other	3,925	15.5%	Other	3,771	14.4%
Total	58,855	100.0%	Total	28,307	100.0%	Total	25,300	100.0%	Total	26,268	100.0%

Sources: 2007-2011 American Community Survey, Public Use Microdata Sample, BRA Research Division Analysis