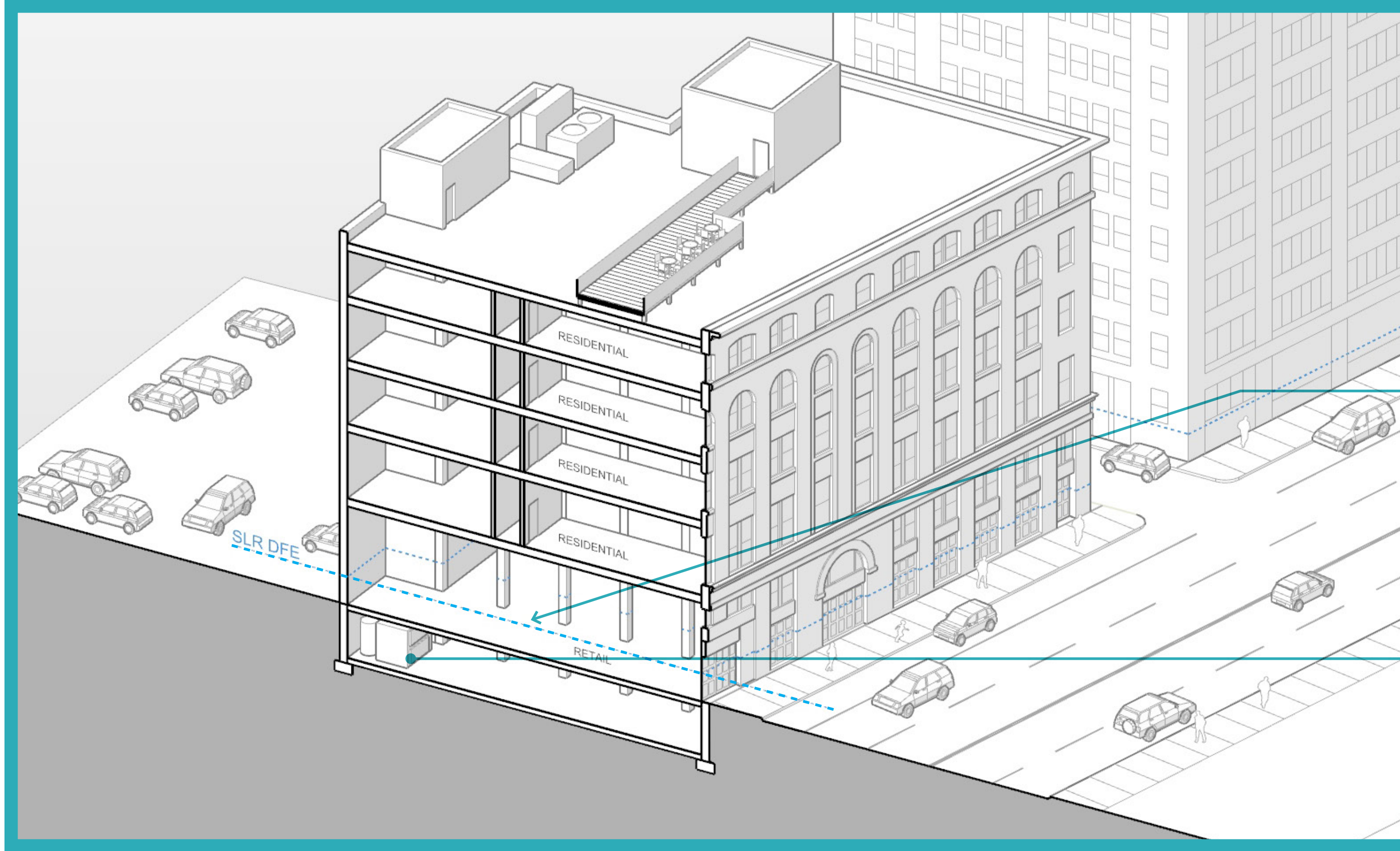


Case Study: Pre-war Mixed-use

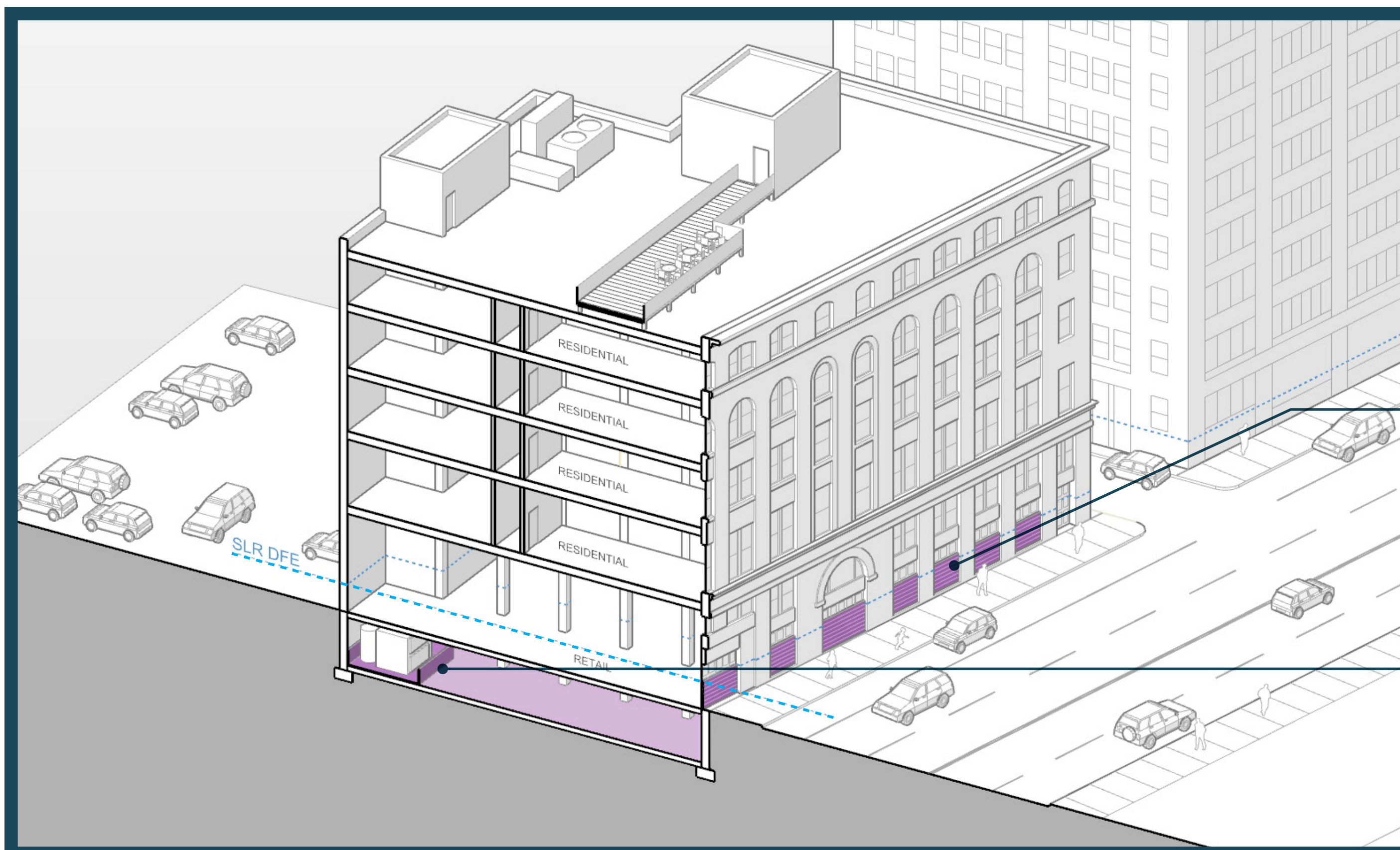
This is an example of a short-term and a long-term adaptation for a common building type.



Existing Conditions

Sea Level Rise-Design Flood Elevation (SLR-DFE) above First Floor Elevation

Critical Systems currently located below SLR-DFE



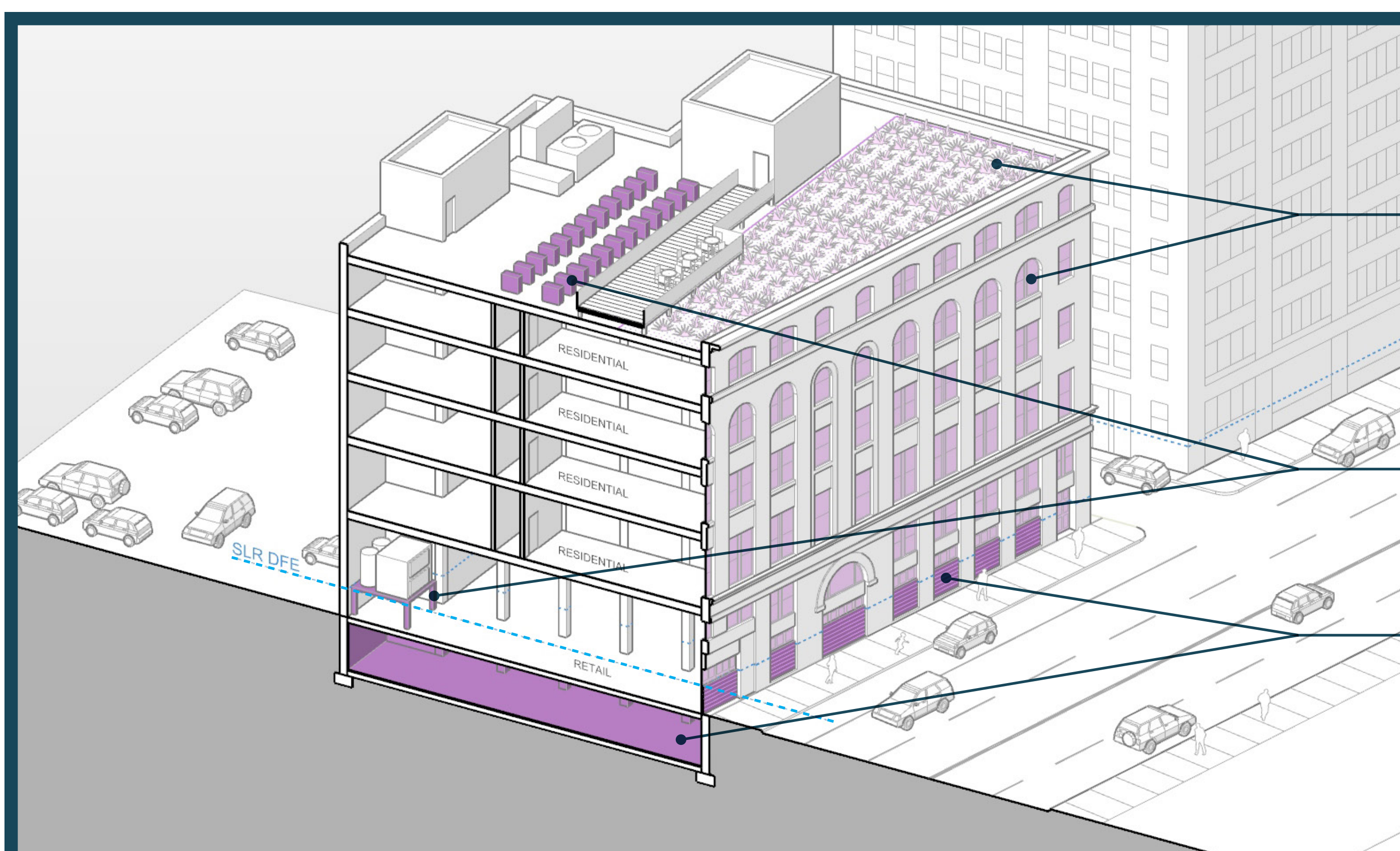
Short-term Retrofit Strategy

Dry-Floodproof

Install historically sensitive brackets for temporary shields at windows and doors below the SLR-DFE. Install sump pumps for backup drainage.

Protect Critical Systems *Proteger sistemas instalados*

Encase the base of critical systems to protect from minor floods.



Long-term Retrofit Strategy

Enhanced Envelope

Upgrade windows to historically sensitive low-e, low-U-factor units. Add extensive green roof.

Protect Critical Systems

Locate systems above SLR-DFE.

Dry-Floodproof

Install historically sensitive brackets for temporary shields at windows and doors below the SLR-DFE. Structurally reinforce stone foundation. Install sump pumps for backup drainage.