

Tremont Crossing Project

Boston, MA

Presentation to:
Boston Civic Design Commission

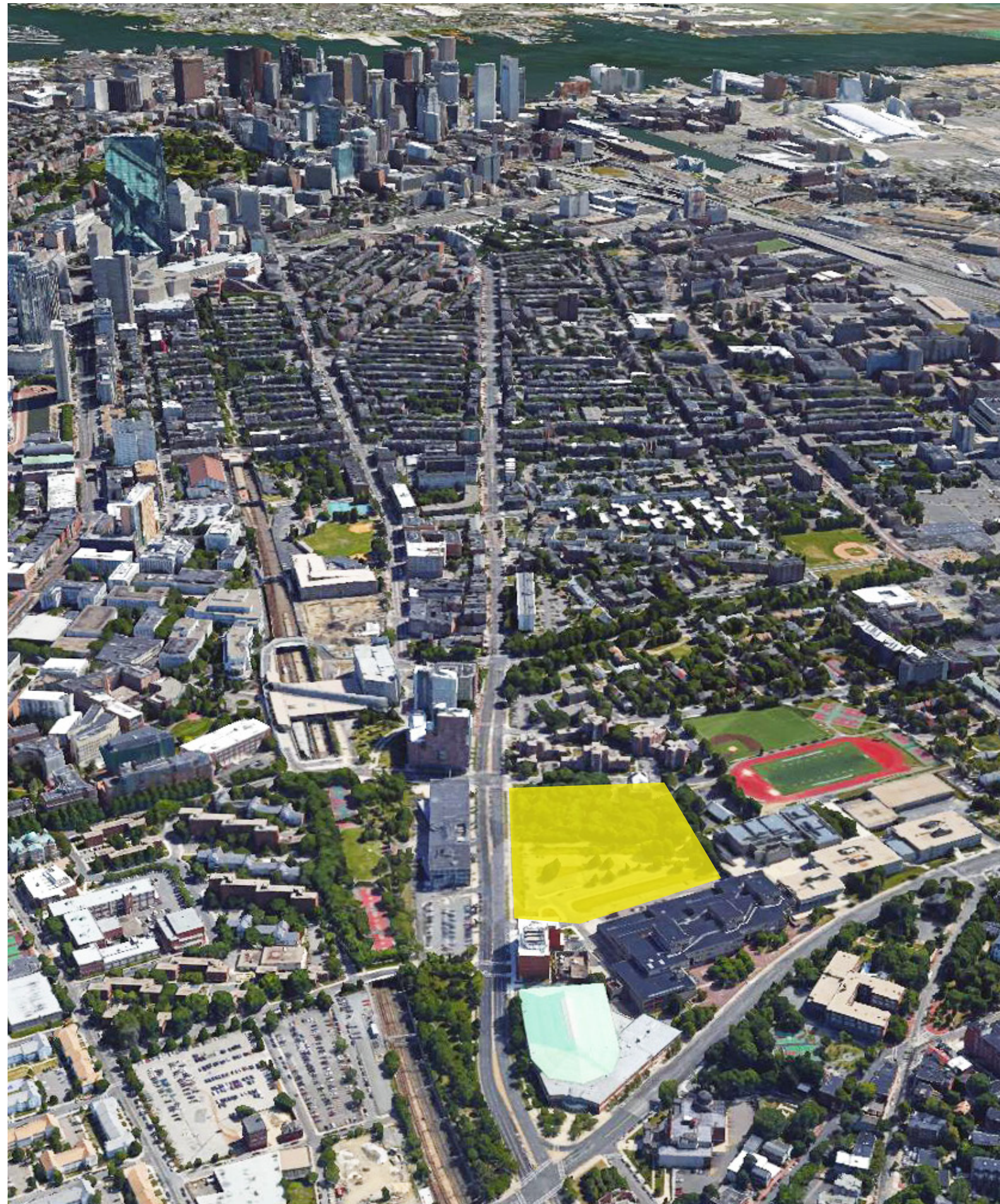
1 March 2016



Executive Summary

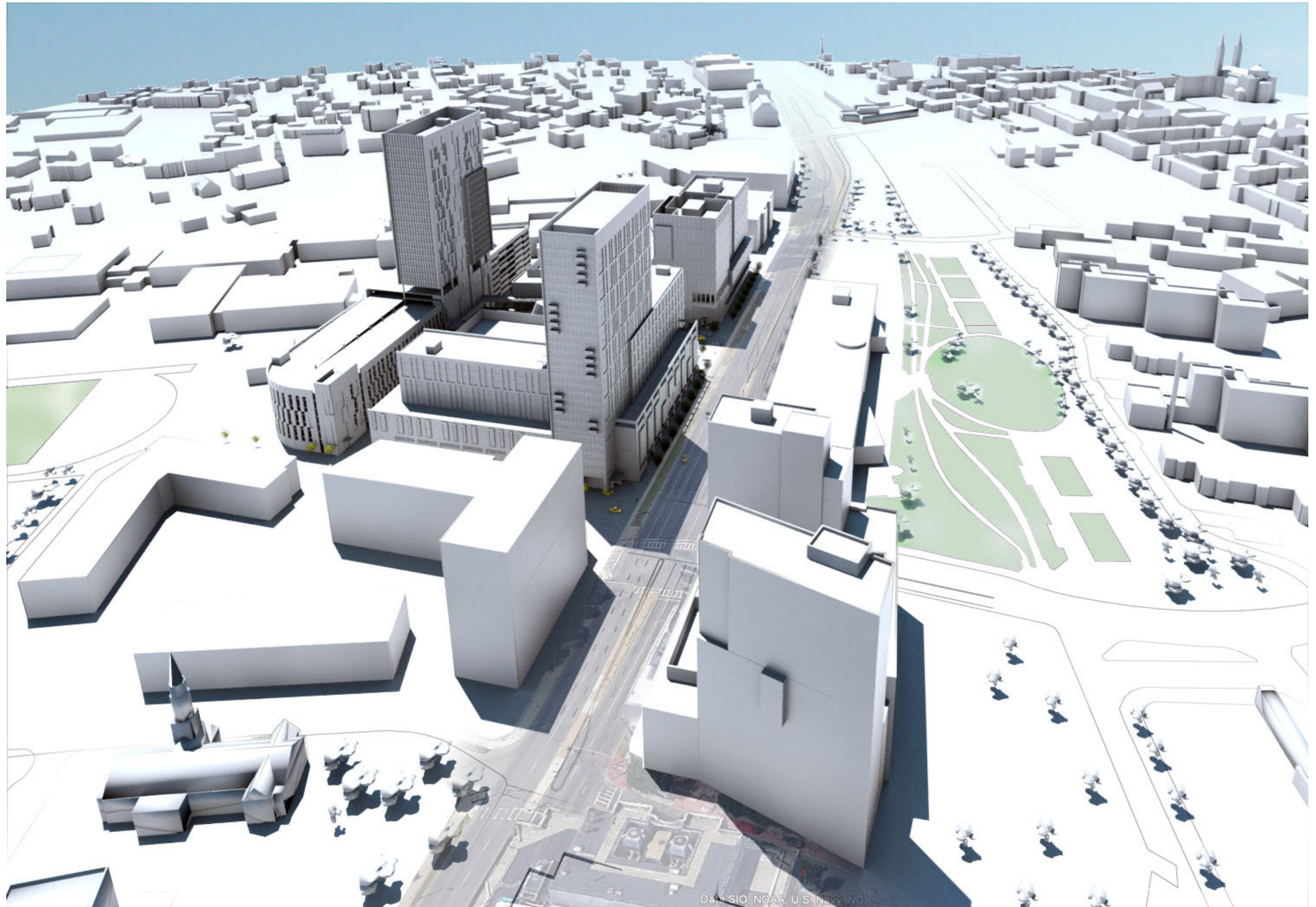
- Project to Include:
- Neighborhood Retail: 116,600 SF
Destination Retail: 285,500 SF
Office: 203,600 SF
Tremont Street Residential Tower: 290,700 SF (300 units)
East Drive Residential Tower: 340,800 SF (400 units)
Hotel: 130,600 SF (200 keys)
NCAAA Museum: 31,000 SF
Parking Garage: 548,700 SF (1,587 spaces above ground);
 - Project Design Team:

Project Architects: **Cambridge Seven Associates Incorporated**
NCAAA Museum Architect: **Stull and Lee Incorporated**
Landscape Architect: **Halvorson Design Partnership**
 - Project benefits will include:
Home for the NCAAA Museum, project income benefits the museums operations;
Improved street and pedestrian environment;
Creating “sense of place” for Lower Roxbury;
Creation of an estimated 2,000 permanent jobs;
Creation of an estimated 2,000 construction jobs;
Affordable housing commitment pursuant to Mayor’s executive order;
Funding for a job training facility;
Creation of an Office of Collaboration and Partnership for Community wealth creation;
Financial assistance for local entrepreneurs leasing space at the Project;
Annual financial assistance for abutting public housing facilities;
Rehabilitation of the abutting Good Shepherd Church.
 - As suggested by the BRA planning and urban design departments, the Project has been subdivided into three “blocks” thus creating urban scaled commercial and neighborhood development;
 - The Project has broad-based community support.
 - PNF submitted on April 17, 2012, DPIR submitted on August 31, 2013 and Supplemental DPIR submitted on February 11, 2016.

























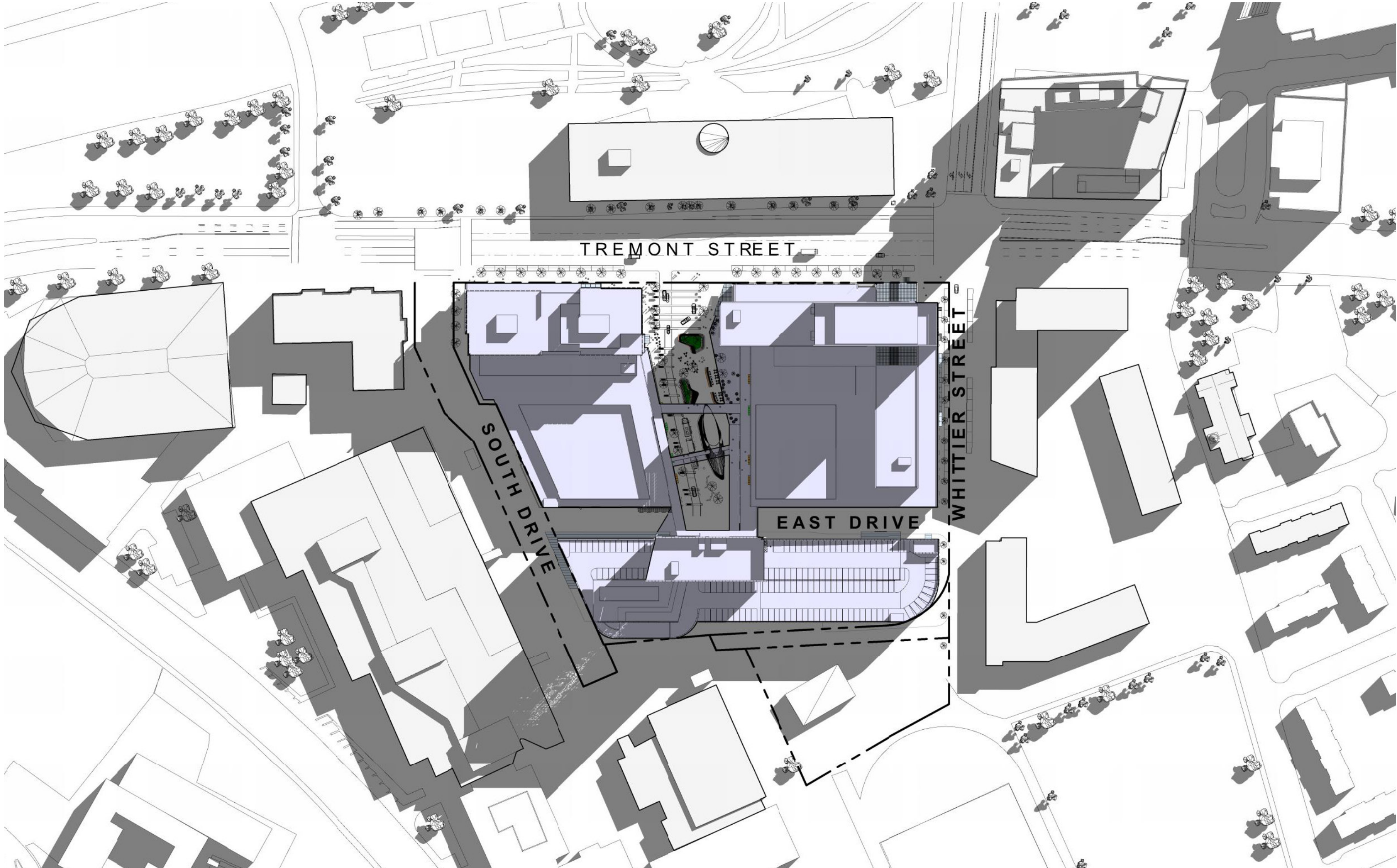


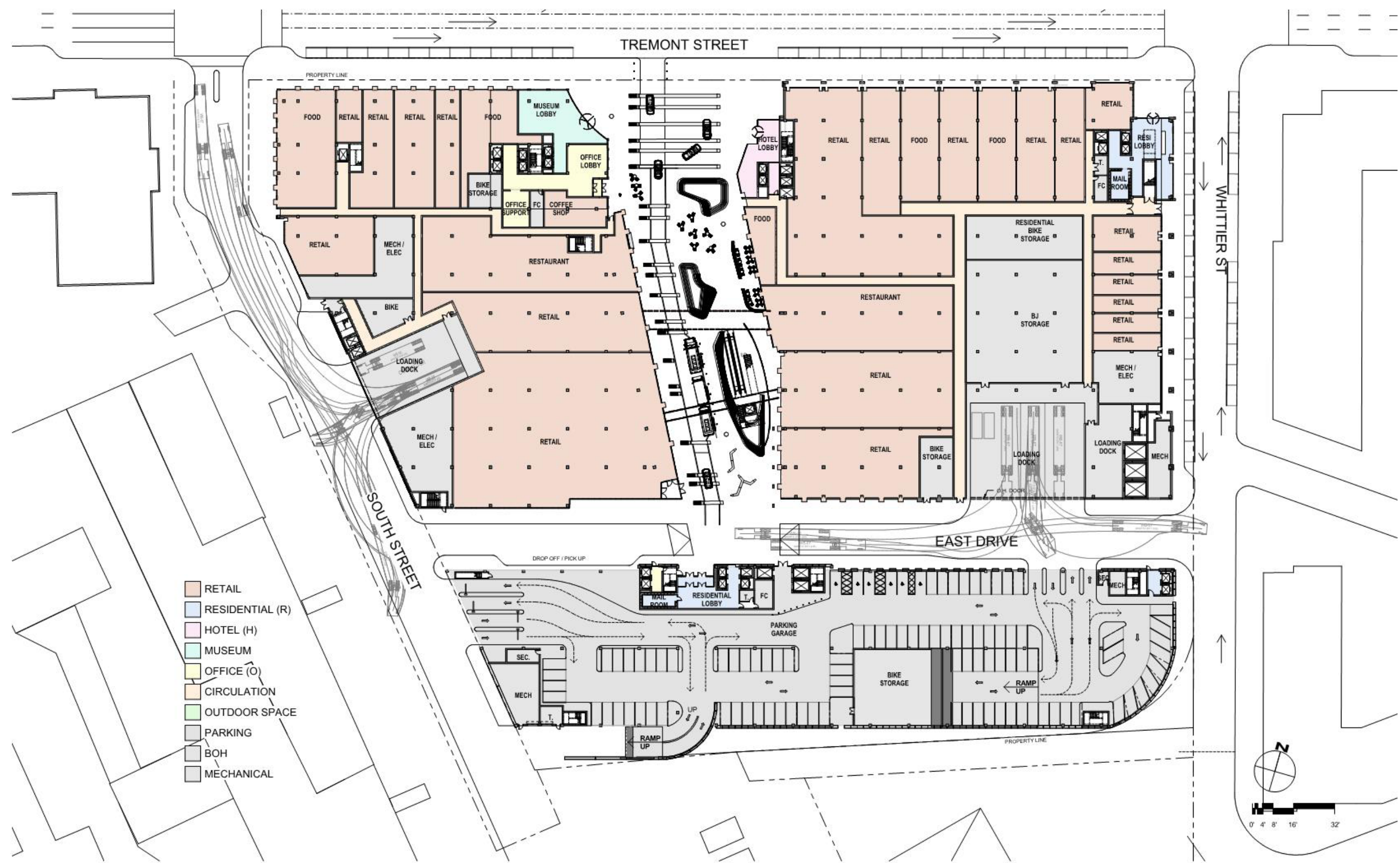


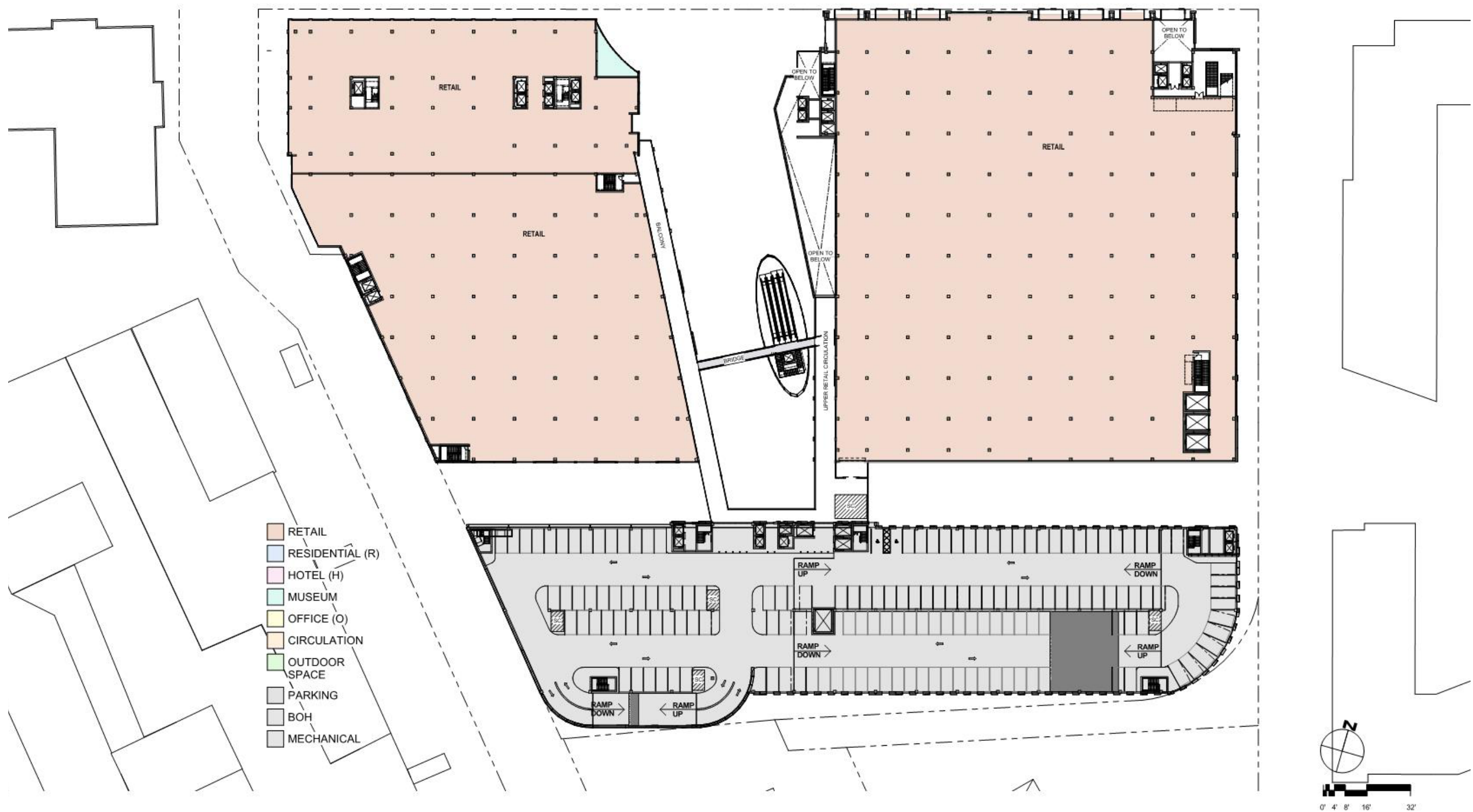




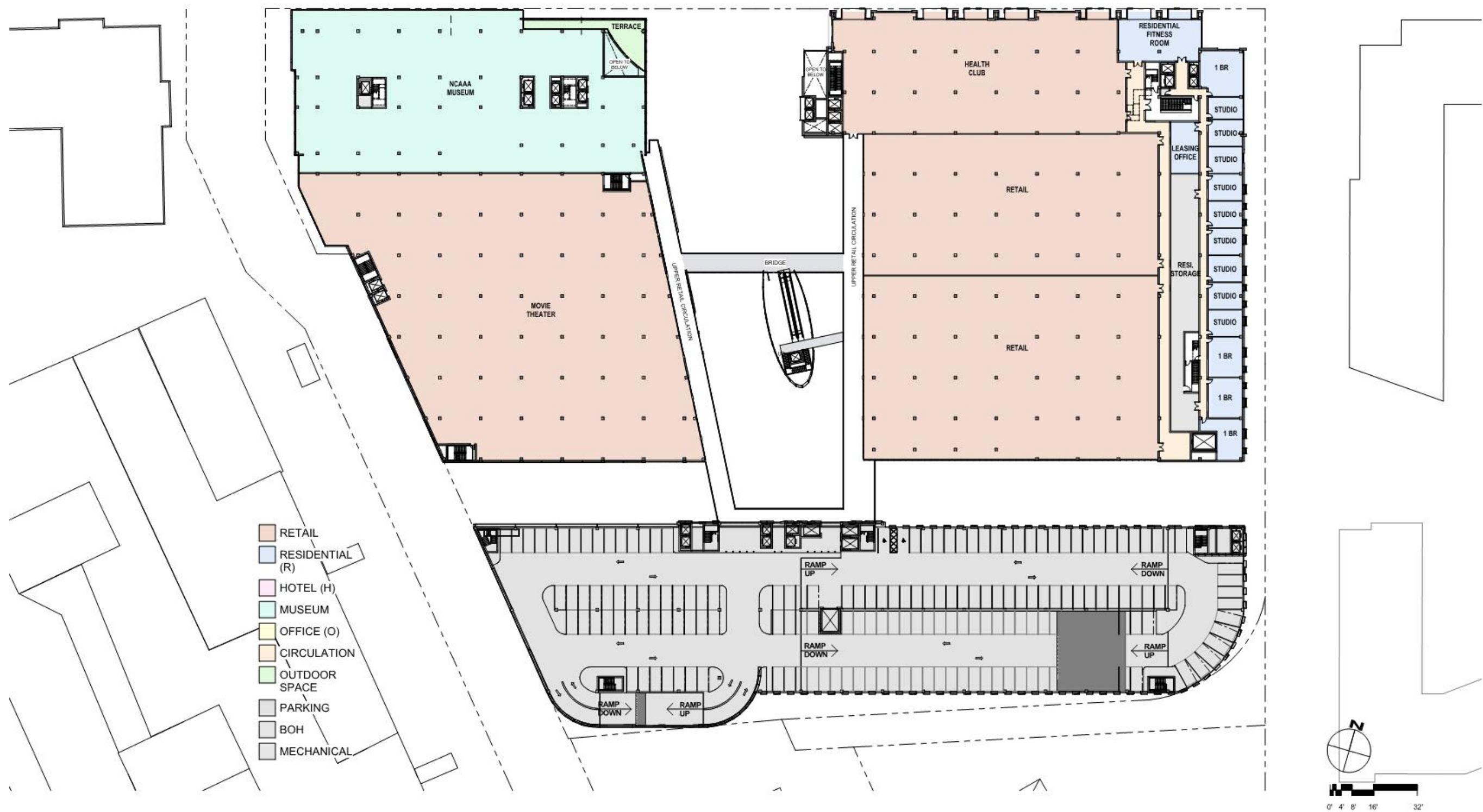
OVERALL PLAN

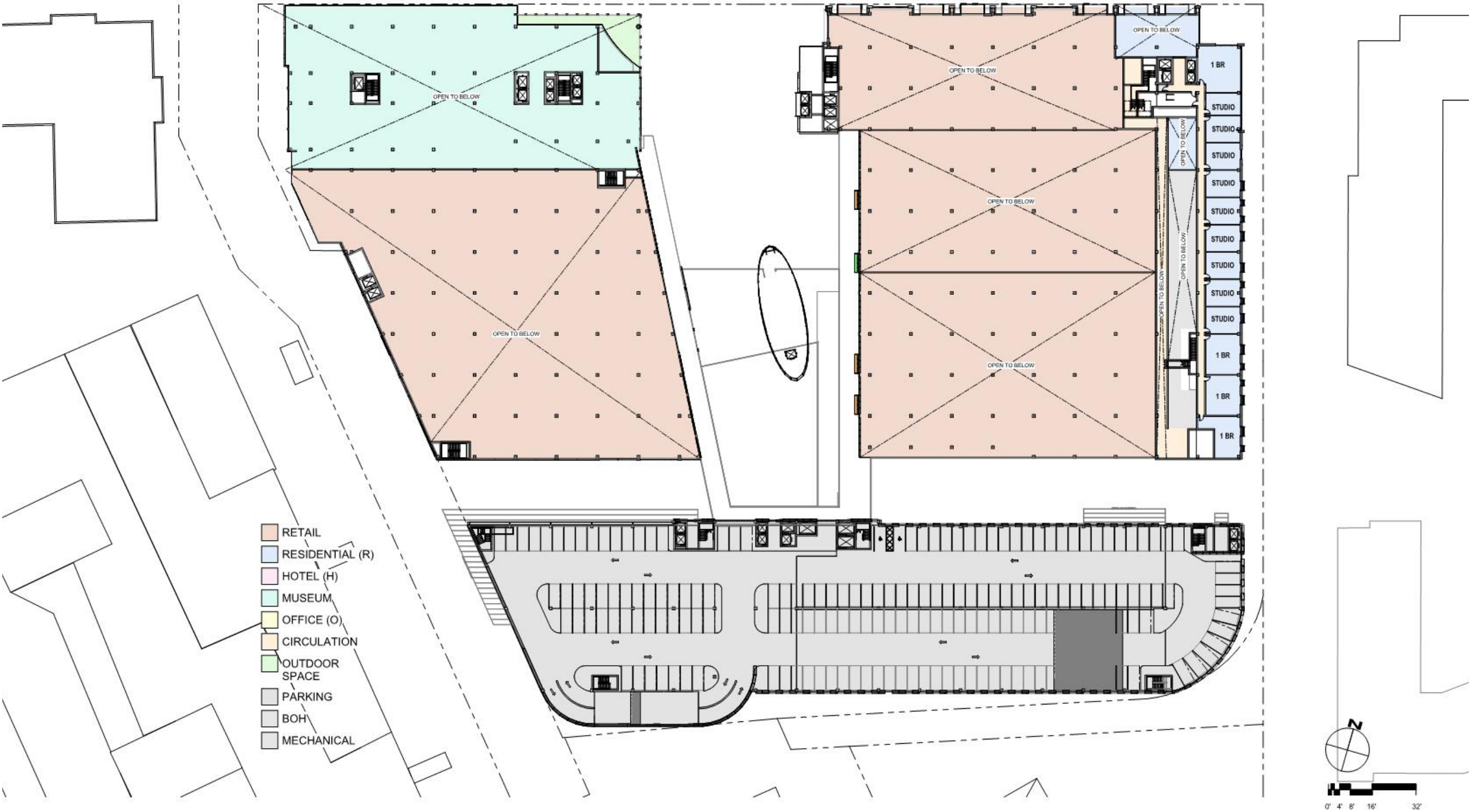




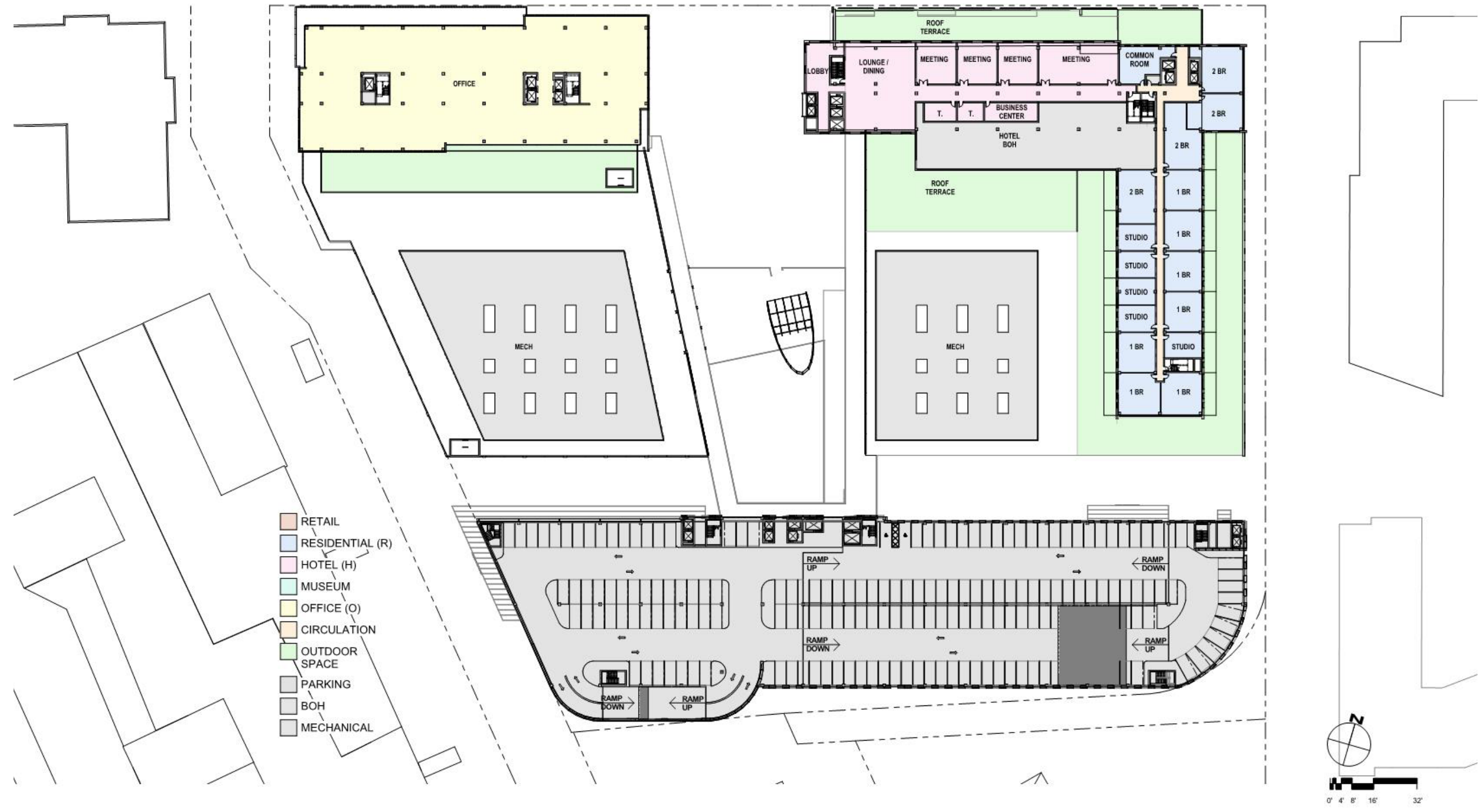


Level 2 Floor Plan

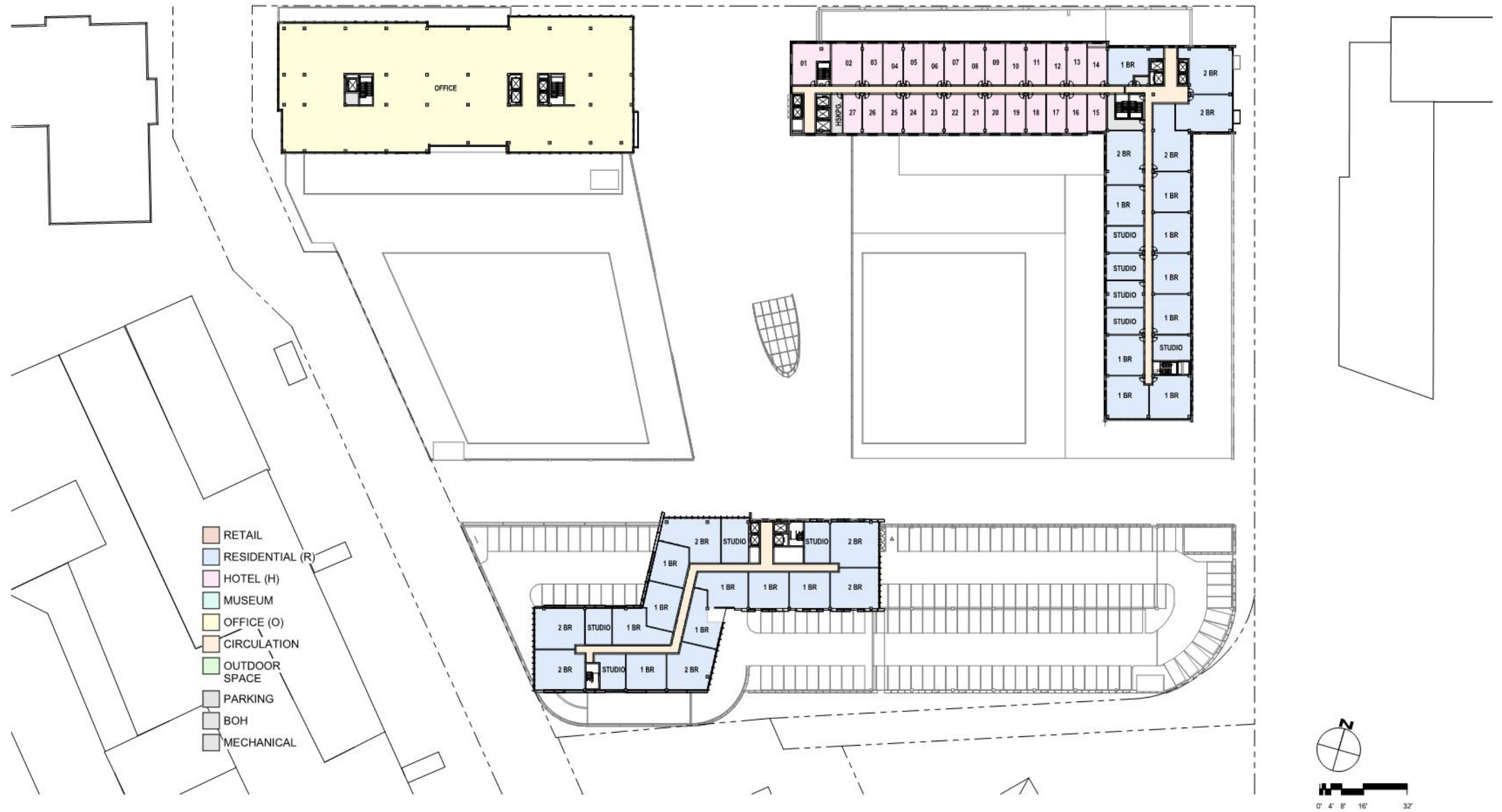




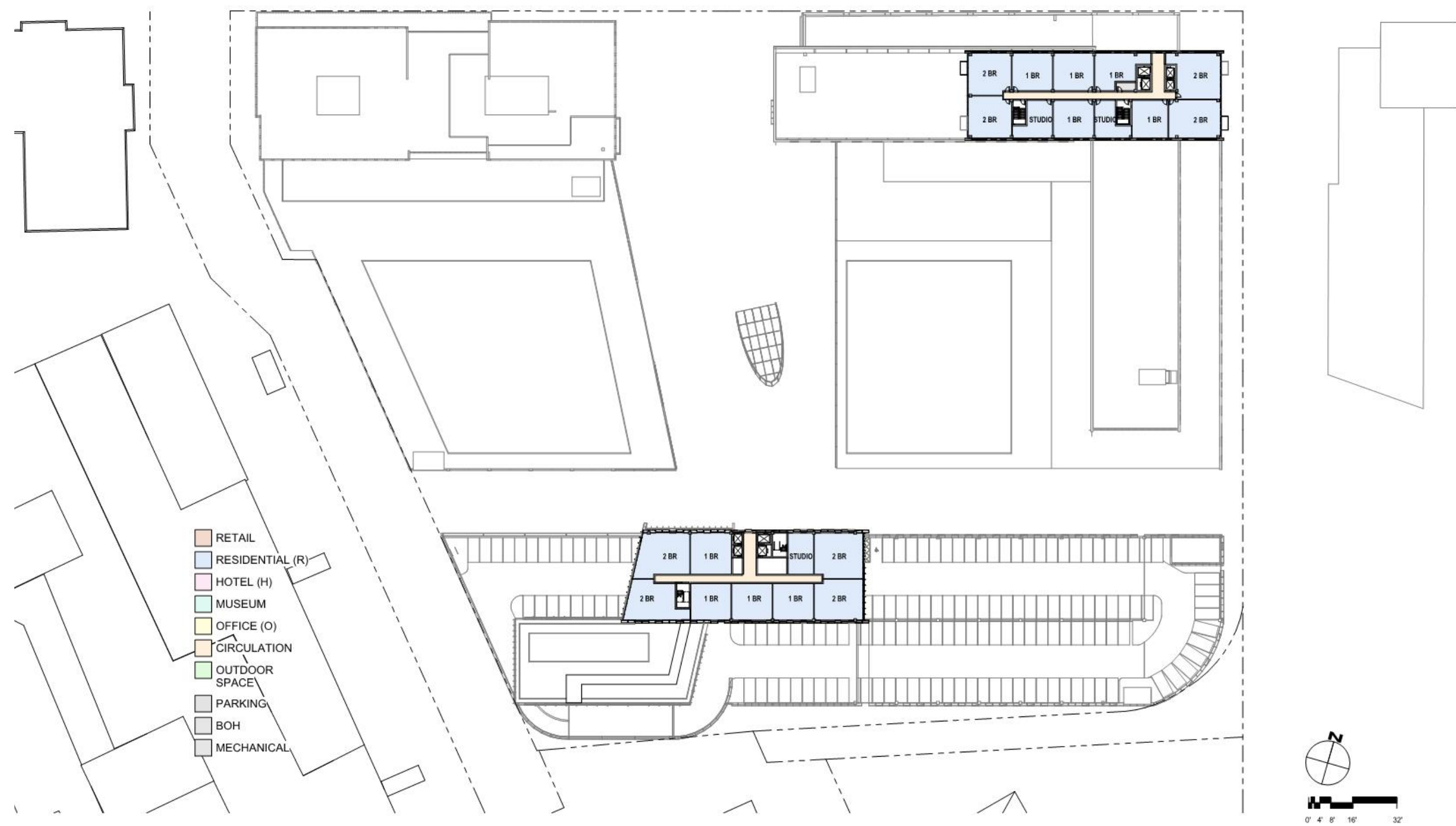
Level 3 Floor Plan



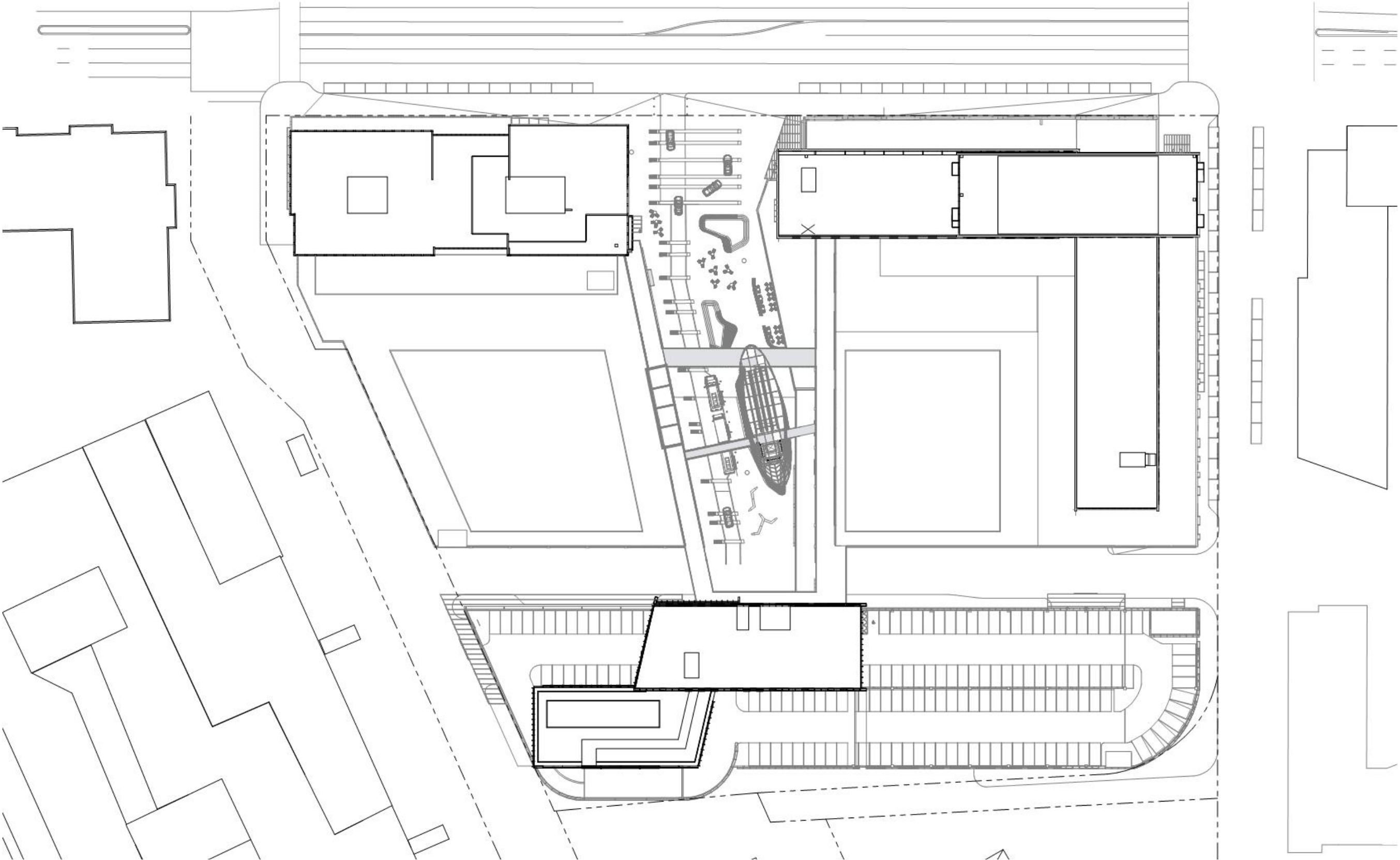
Level 4 Floor Plan



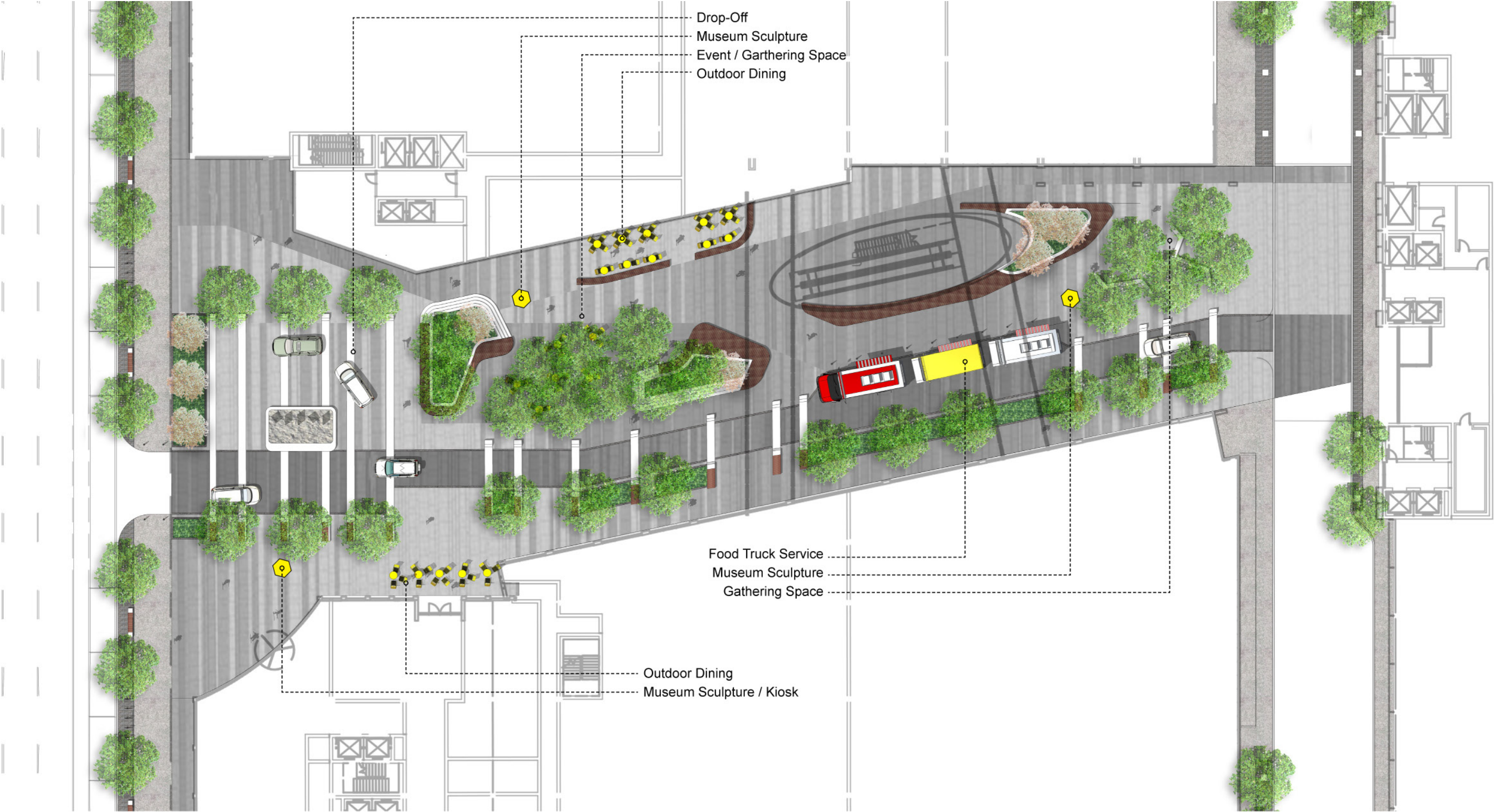
Typical Upper Floor Plan



Typical Residential Floor Plan



Roof Plan



PLAZA SITE PLAN









