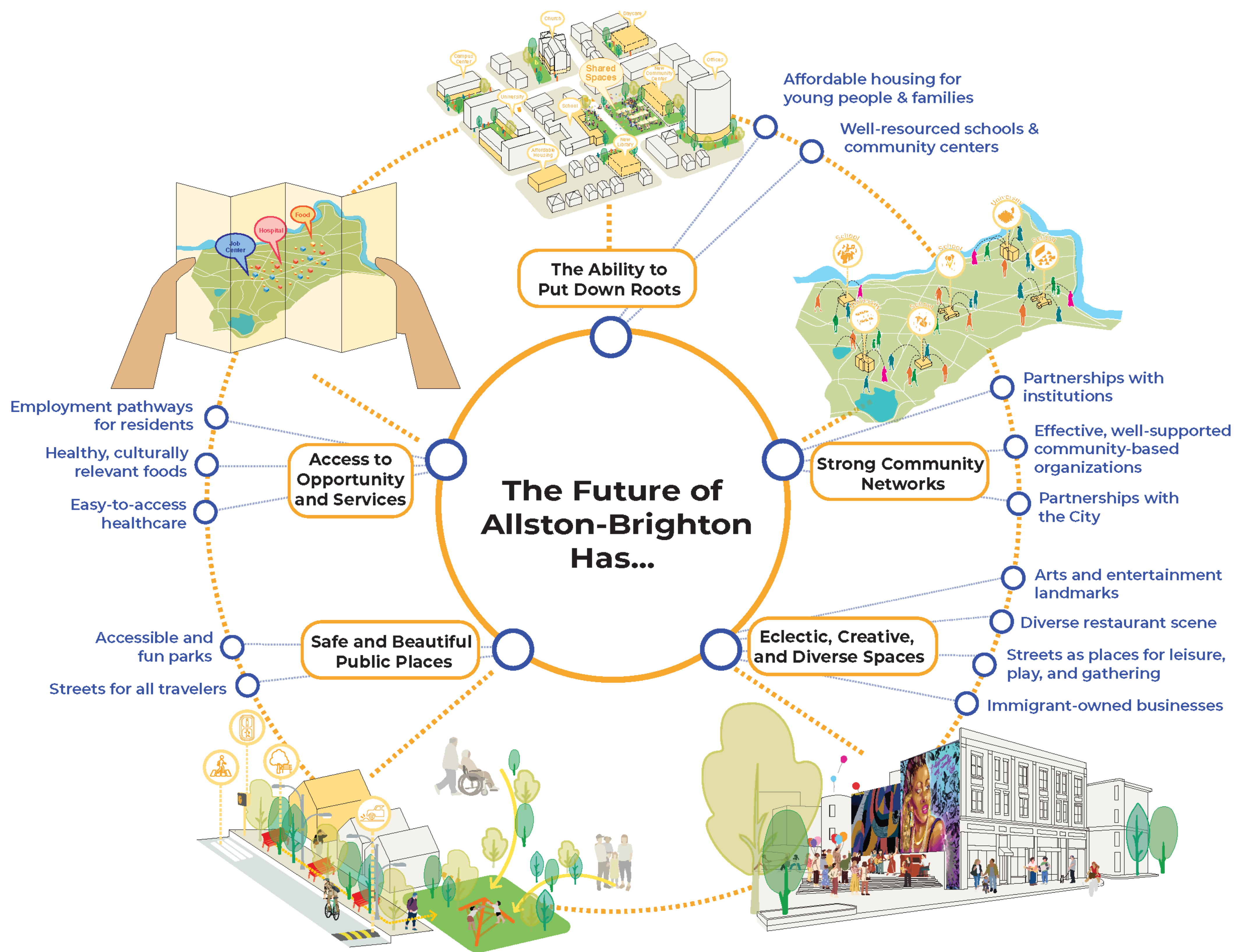


ALLSTON-BRIGHTON COMMUNITY PLAN'S BIG IDEAS

The Foundation of the Plan

Big ideas are key goals that will be the foundation of the community plan's recommendations. They are based on input from the community and show ways to bring the shared vision for Allston-Brighton to life. There are five big ideas, shown in the diagram below.

They focus on supporting people who live here now and preserving what makes Allston-Brighton special, especially the neighborhoods' creative vibe and strong community networks. They also prioritize improving access to parks, services, and good jobs.



Community Members Have Said...

"All of Allston-Brighton would benefit from corner stores and local small businesses, while we need larger buildings in transit-rich locations to meet the scale of our housing shortage."

"Increasing housing everywhere... with more concentrated centers of commercial and art nightlife and larger housing."

"I would rather travel a small distance easily to find nightlife, art and cultural events than make sure that it exists at my doorstep."

"I like focused centers of more activity, business, and housing."

"We can have vibrancy across Allston-Brighton, even if some areas can accommodate more development than others."