

# A PATTERN BOOK OF BOSTON HOUSES



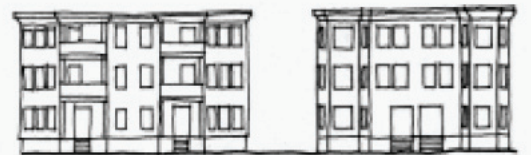
TWO FAMILY



THREE DECKER



SIX FAMILY



ROWHOUSE



ROOF CAP

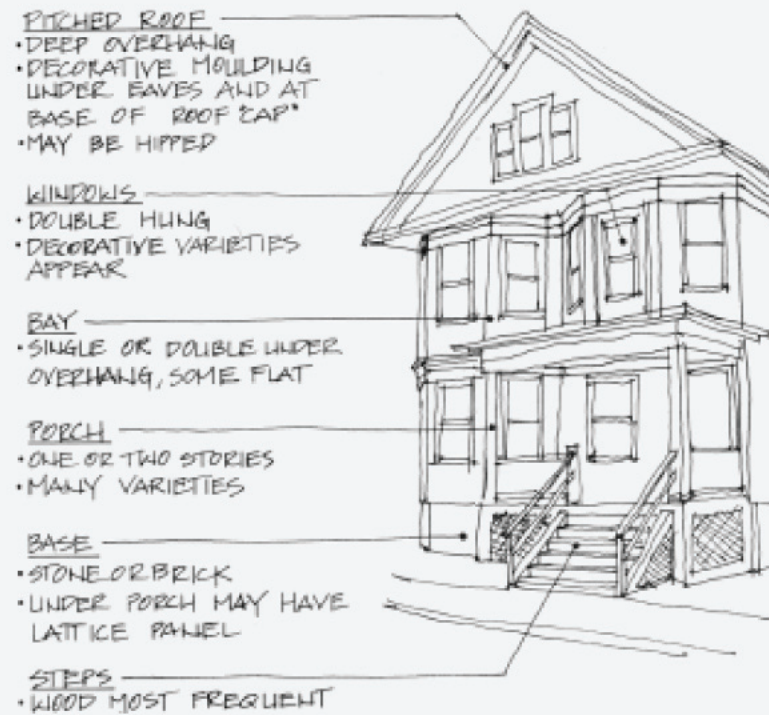
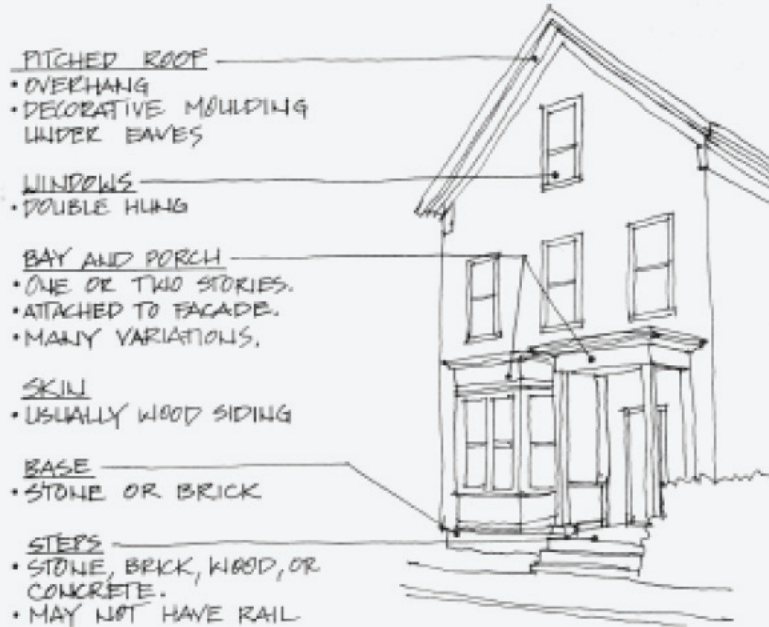


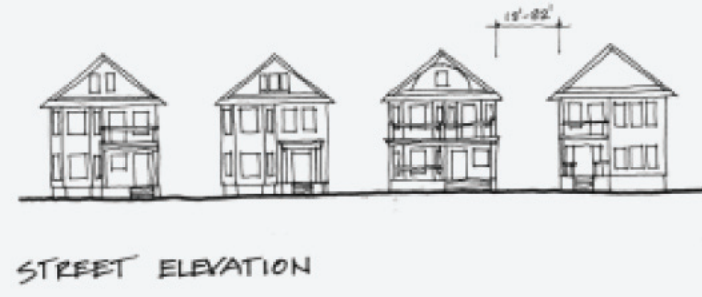
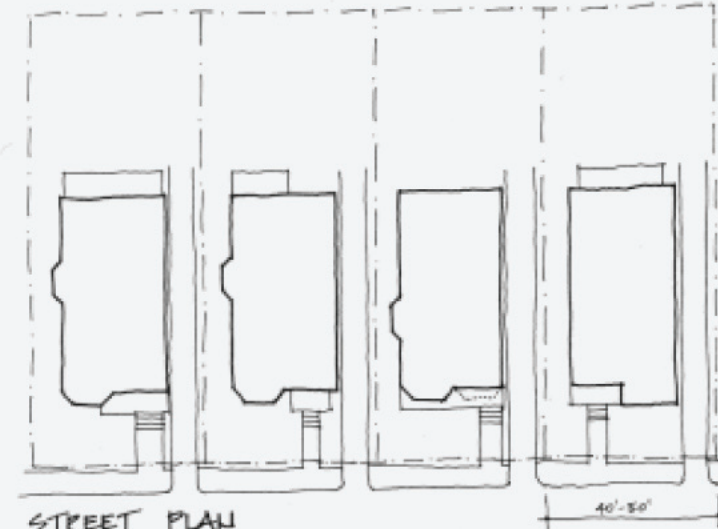
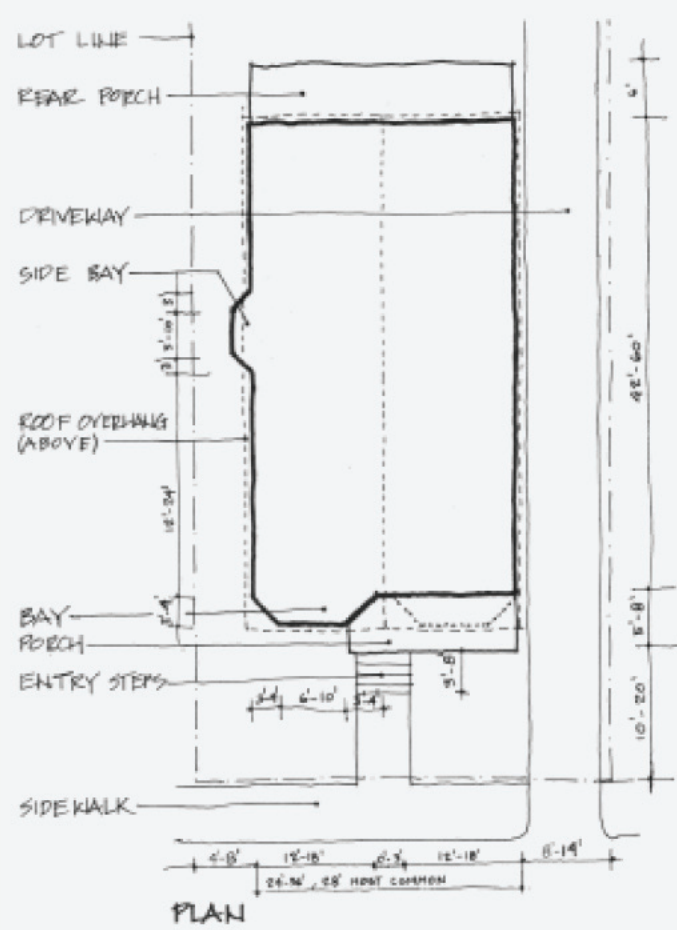
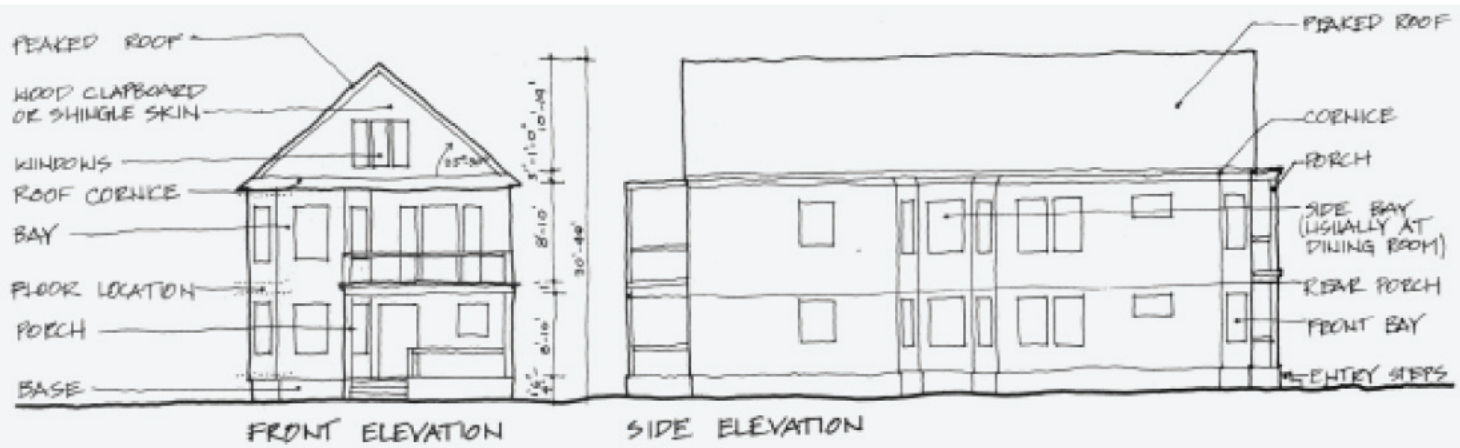
GABLE FRONT



HIPPED ROOF

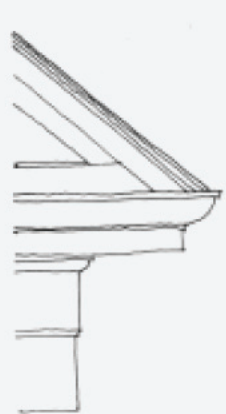








PORCH AND STAIR DETAILS



CORNICE / ROOF DETAIL



DOOR AND WINDOW DETAILS



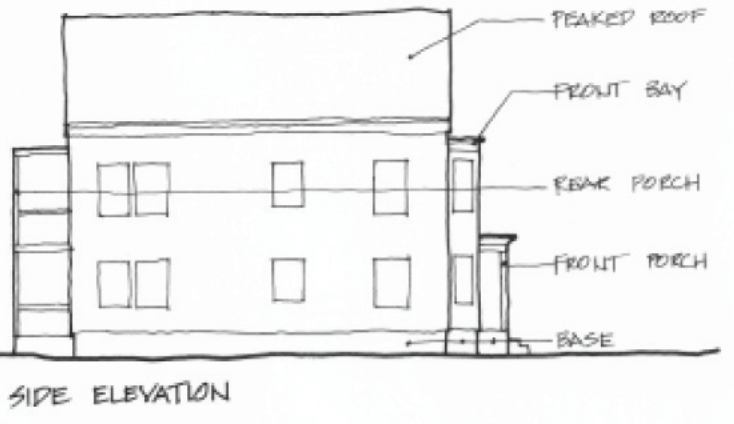
ROOF CAP : EXAMPLES

TWO FAMILY

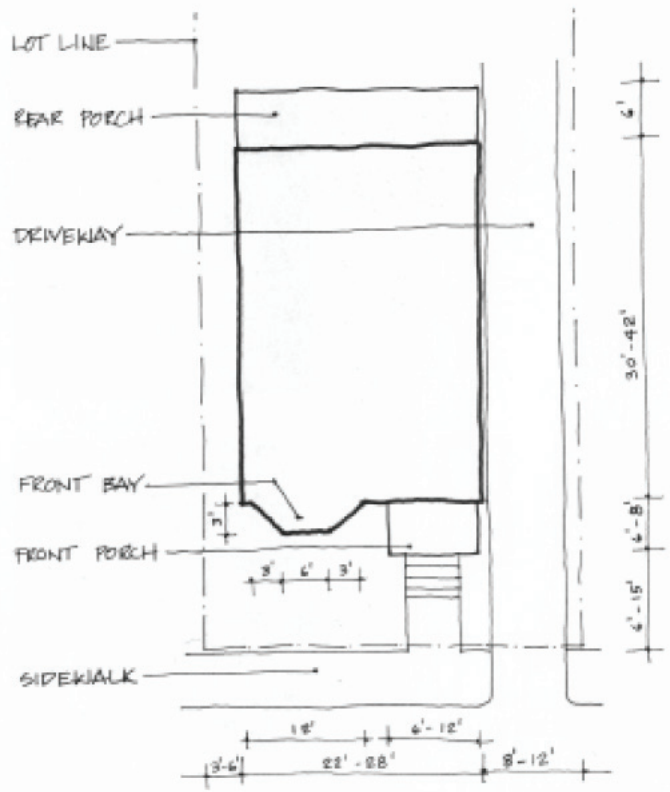
10



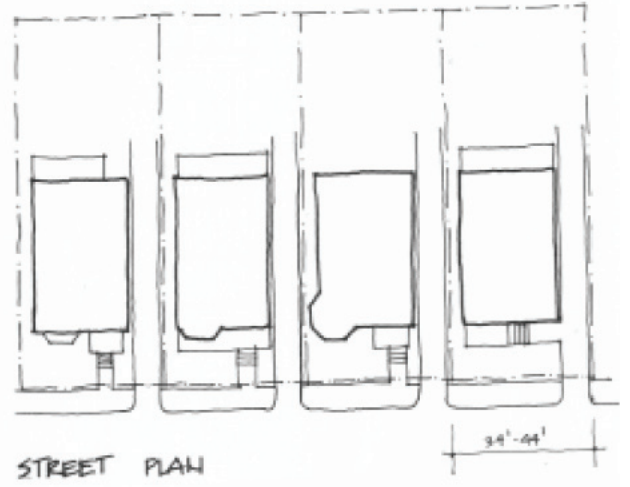
FRONT ELEVATION



SIDE ELEVATION



PLAN



STREET PLAN

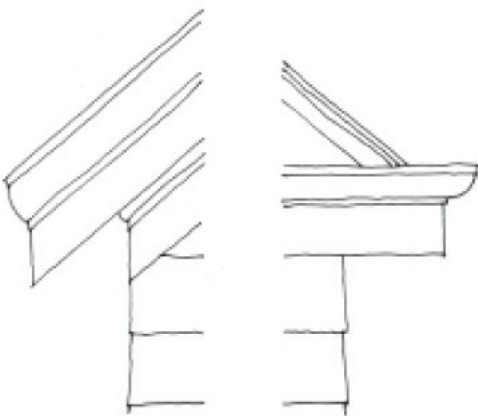


STREET ELEVATION





PORCH AND STAIR DETAILS



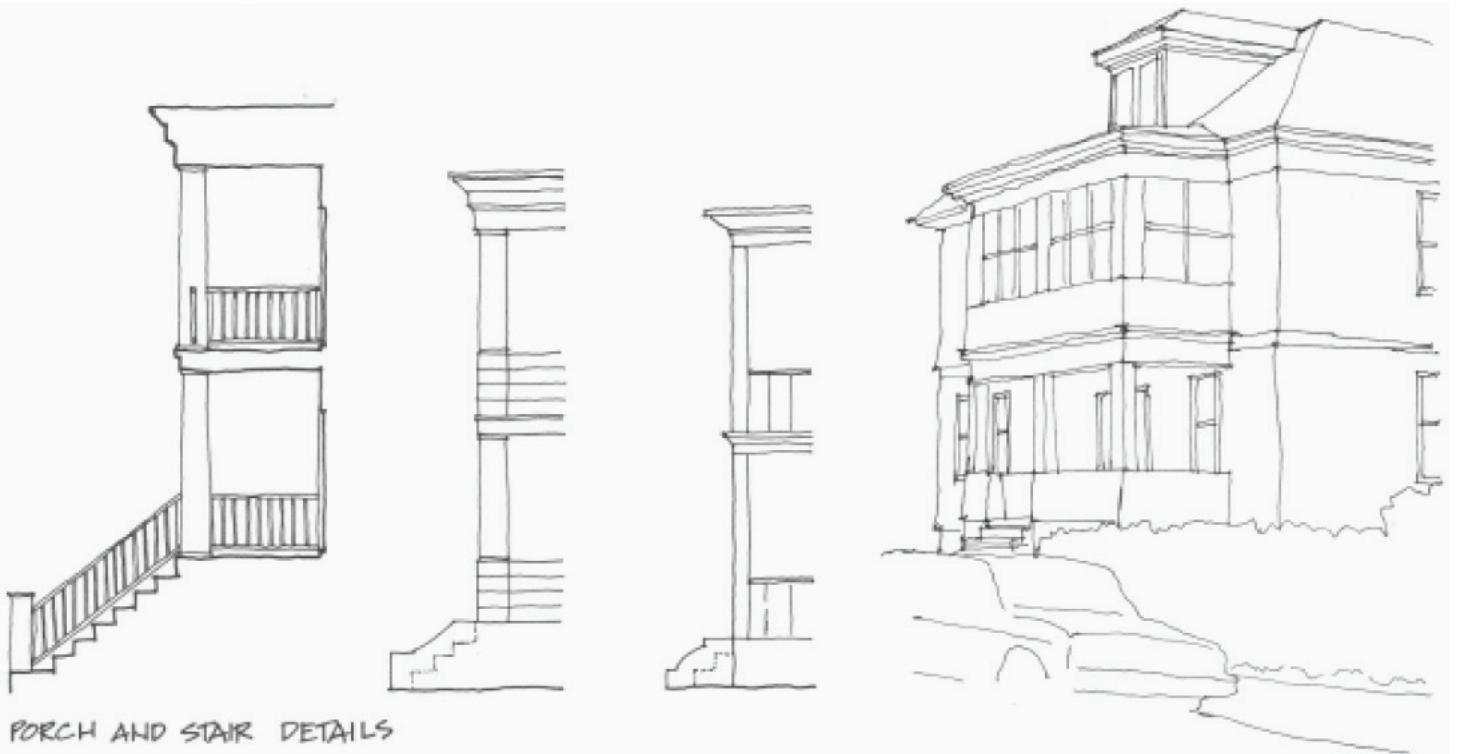
CORNICE/ROOF DETAILS



DOOR AND WINDOW DETAILS







PORCH AND STAIR DETAILS



ROOF DETAIL



DORMER

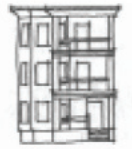


DOOR AND WINDOW DETAILS

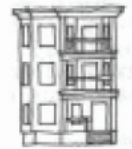




SINGLE BAY NARROW



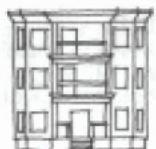
DOUBLE BAY NARROW



FLAT FRONT NARROW



DOUBLE BAY WIDE



FLAT FRONT WIDE



- WINDOWS
- MOST ALWAYS DOUBLE-HUNG.
  - MAY HANG FROM MOULDING BAND (AS SHOWN) OR FLOAT FREE ON SKIN.
  - SMALL, FIXED STAINED GLASS PATTERNED WINDOWS FREQUENTLY OCCUR AT STAIRS AND IN DINING ROOMS.

- DECORATIVE MOLDING
- MANY VARIETIES AND CONFIGURATIONS.
  - MAY WRAP AROUND ENTIRE BUILDING, APPEAR ON FRONT ONLY, OR BE ABSENT.

- PORCH
- MANY VARIETIES AND CONFIGURATIONS.
  - MAY ENGAGE CORNICE OR MAY END AT THIRD FLOOR.
  - FEW 3 DECKERS ARE WITHOUT

- STEPS
- ALWAYS PRESENT
  - MAY BE WOOD, STONE, BRICK, OR CONCRETE.



- CORNICE
- PRESENT ON ALL SIDES OF BUILDING BUT IS USUALLY MORE ELABORATE AT FRONT.
  - 3 DECKER MAY ALSO BE TOPPED WITH A PITCHED HIPPED, OR OTHER TYPE OF ROOF.

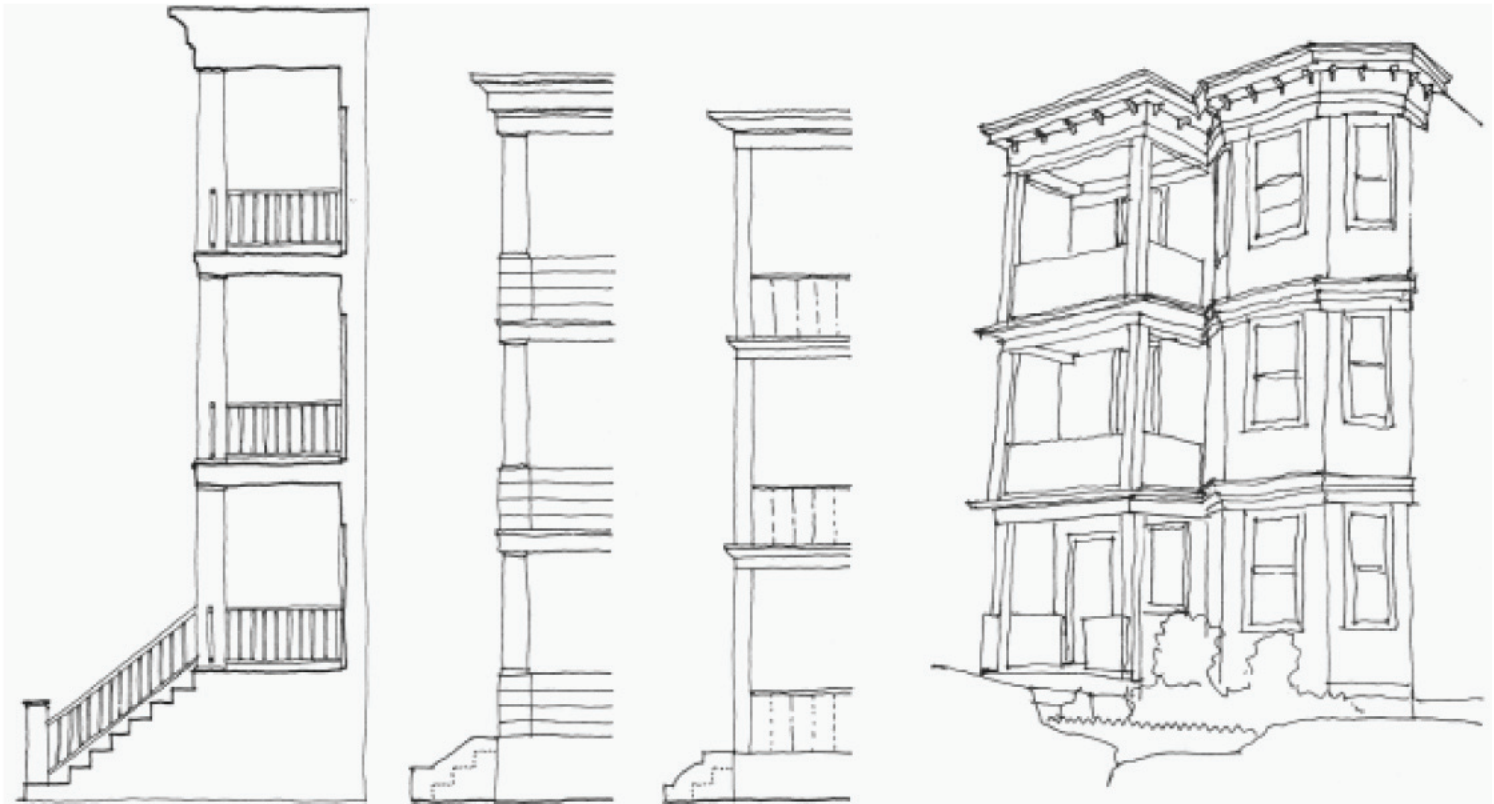
- BAY
- USUALLY 3 SIDED BUT MAY BE BOWED. ONE OR TWO BAYS MAY APPEAR ON FRONT AND SOMETIMES ON SIDE. SOME 3 DECKERS HAVE FLAT, BAYLESS FRONTS.

- SKIN
- USUALLY WOOD CLAPBOARD OR SHINGLE. THE ORIGINAL FACING MATERIAL. MANY HAVE BEEN RE-FACED WITH VINYL, ALUMINUM, OR OTHER MATERIALS.

- BASE
- USUALLY STONE OR BRICK.
  - BASE UNDER PORCH MAY HAVE LATTICE PANELS.
  - ALWAYS PRESENT







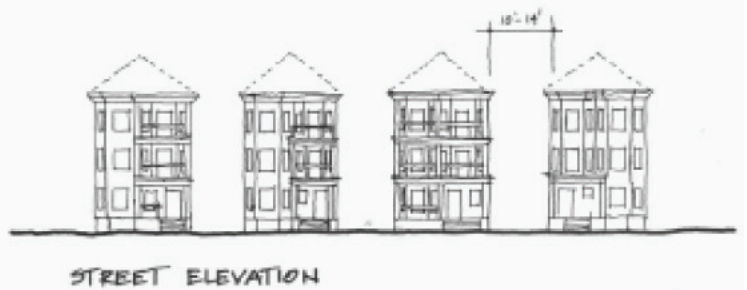
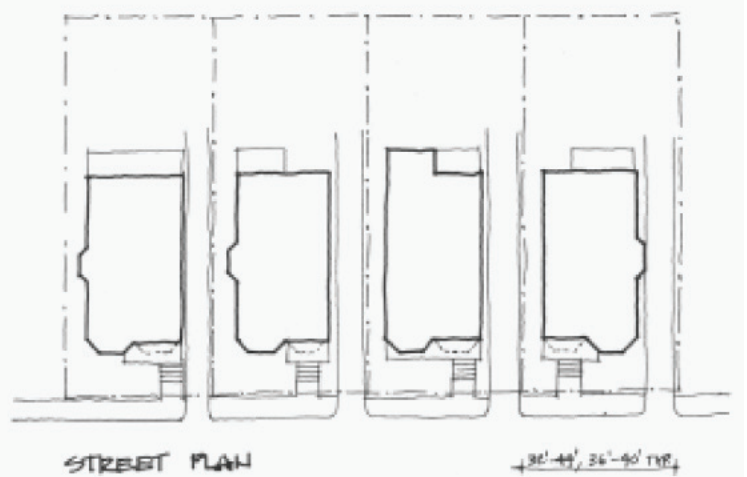
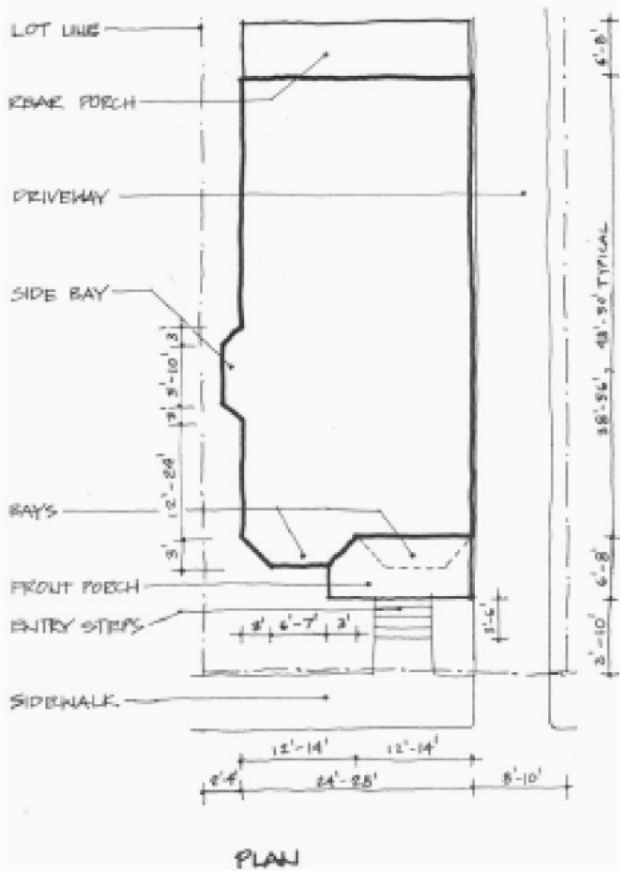
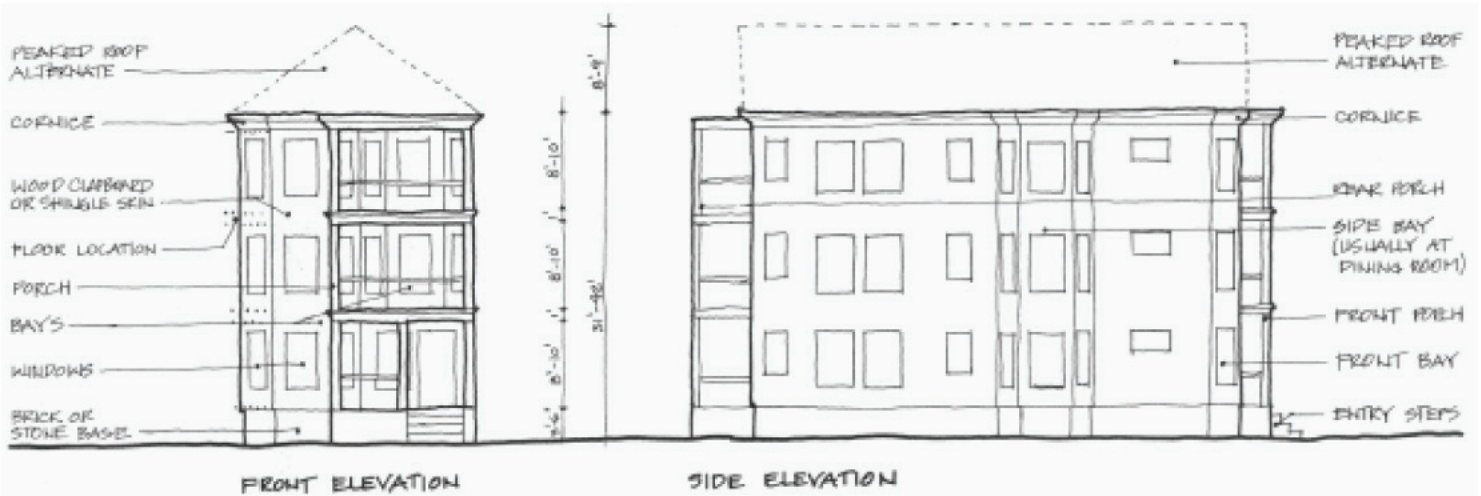
PORCH AND STAIR DETAILS

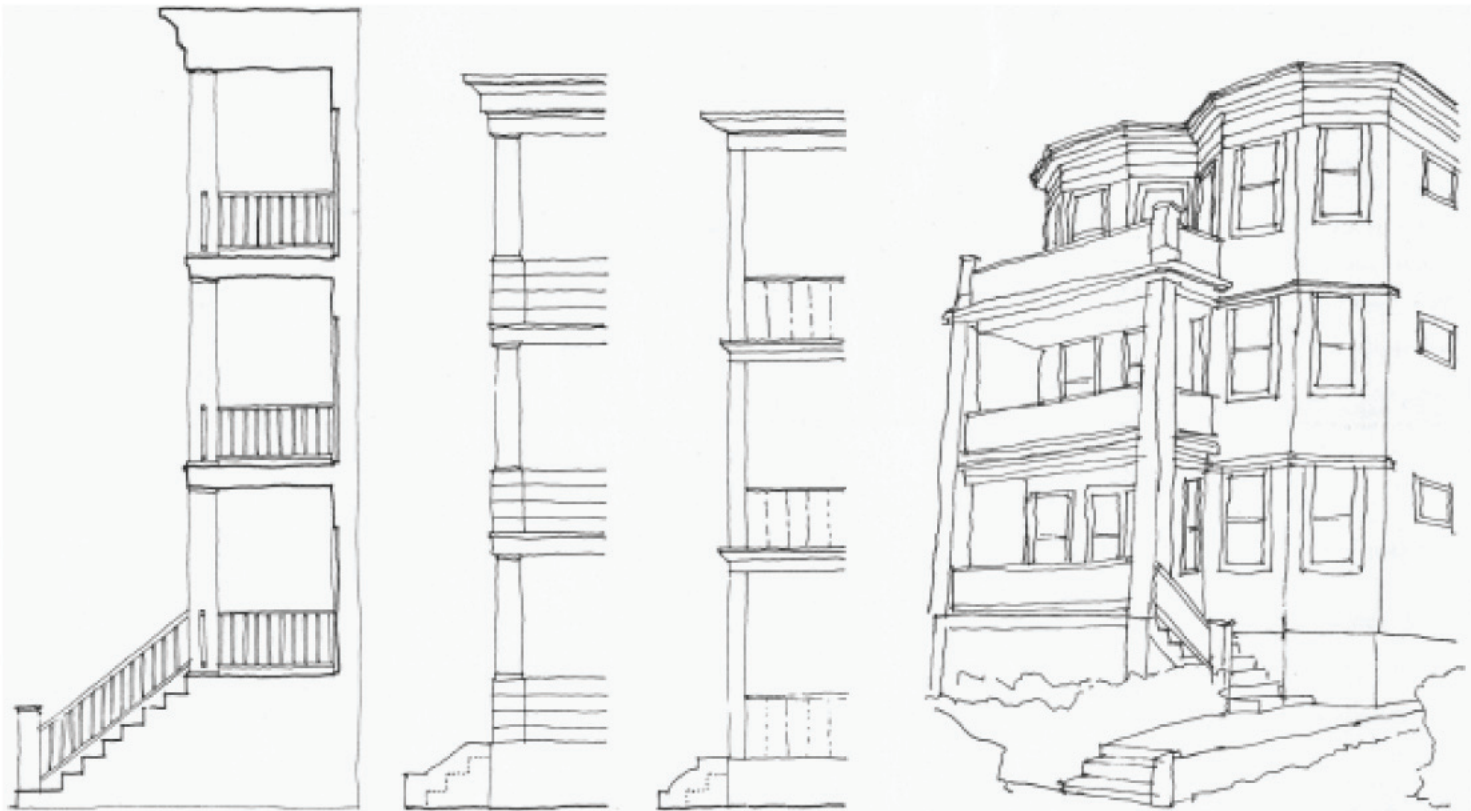


CORNICE DETAILS

DOOR AND WINDOW DETAILS







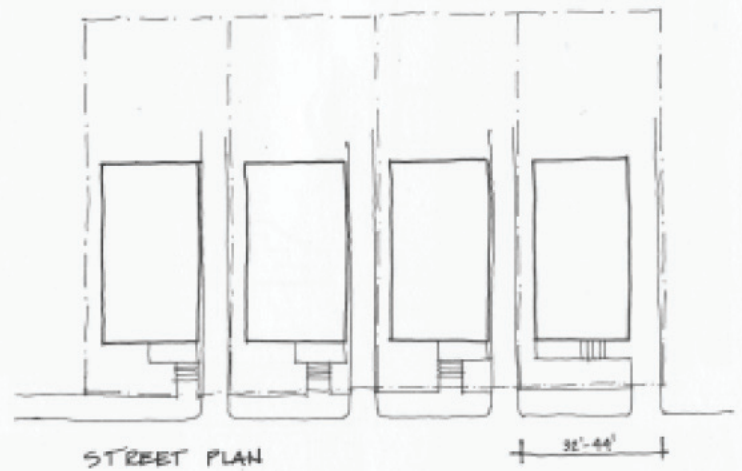
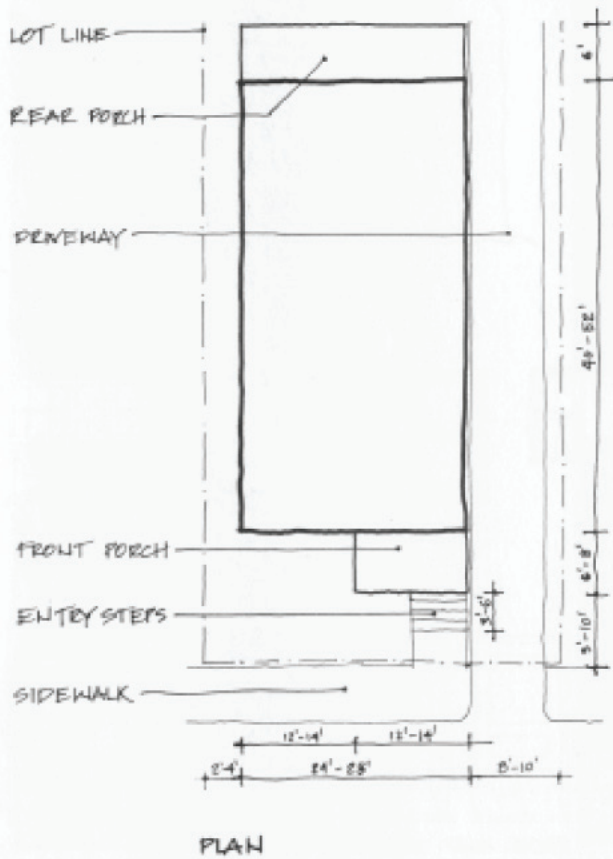
PORCH AND STAIR DETAILS

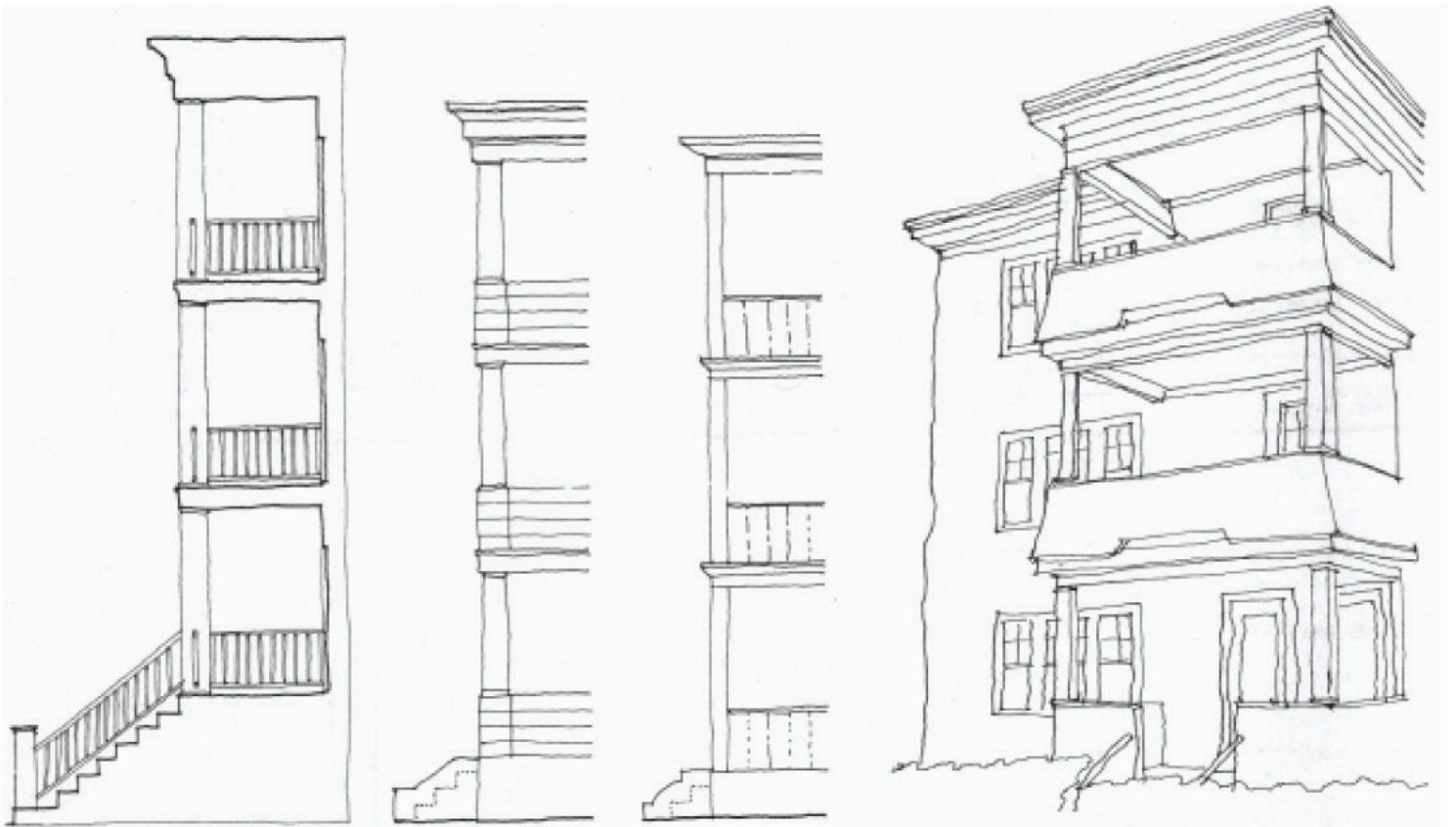


CORNICE DETAILS

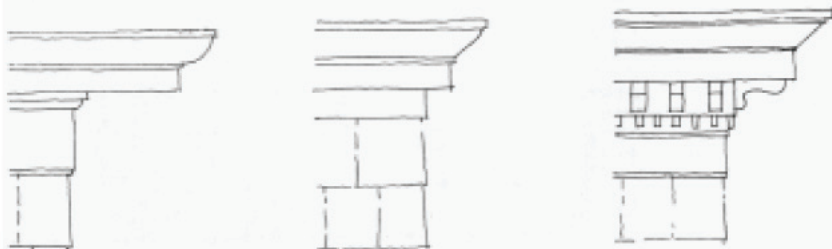
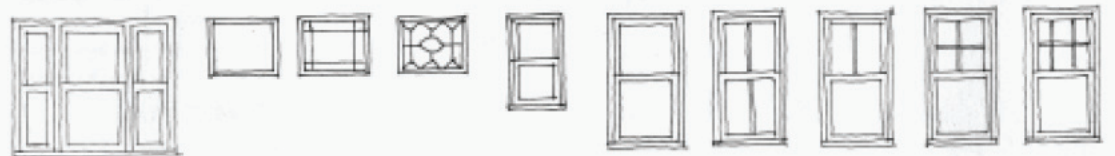
DOOR AND WINDOW DETAILS



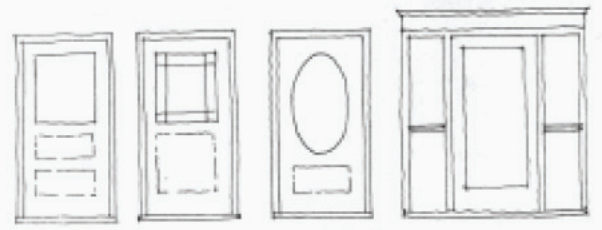




PORCH AND STAIR DETAILS



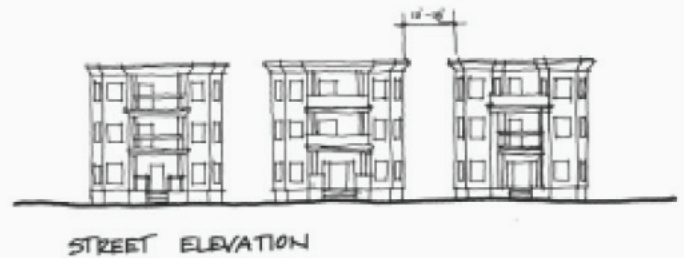
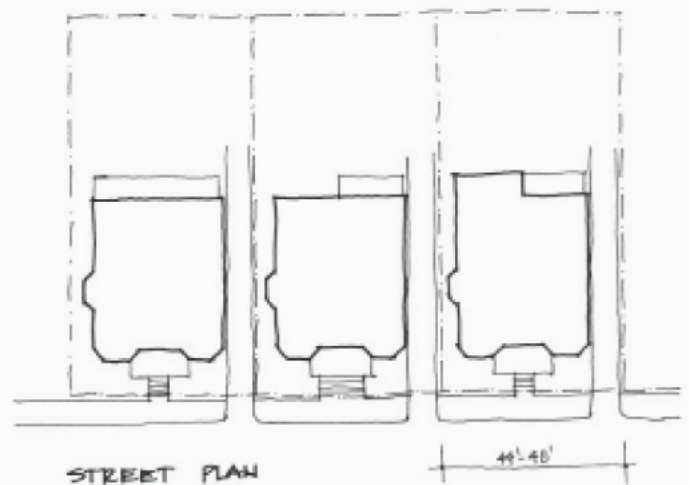
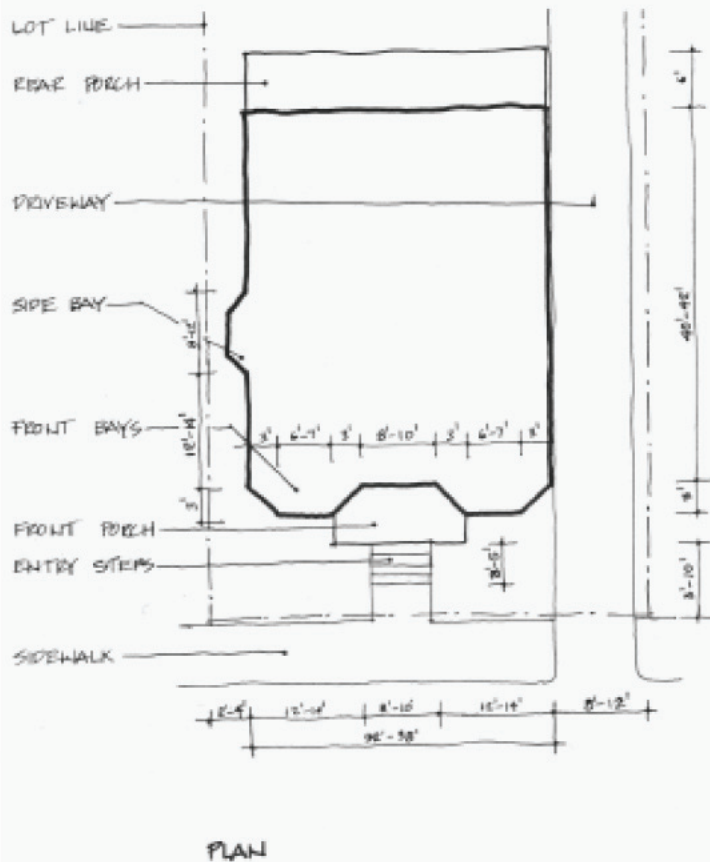
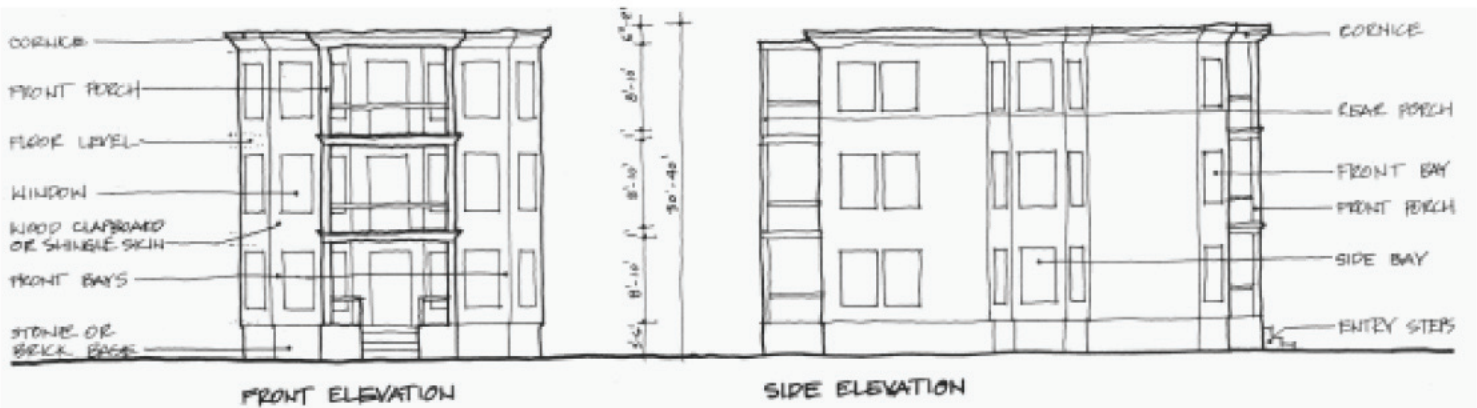
CORNICE DETAILS

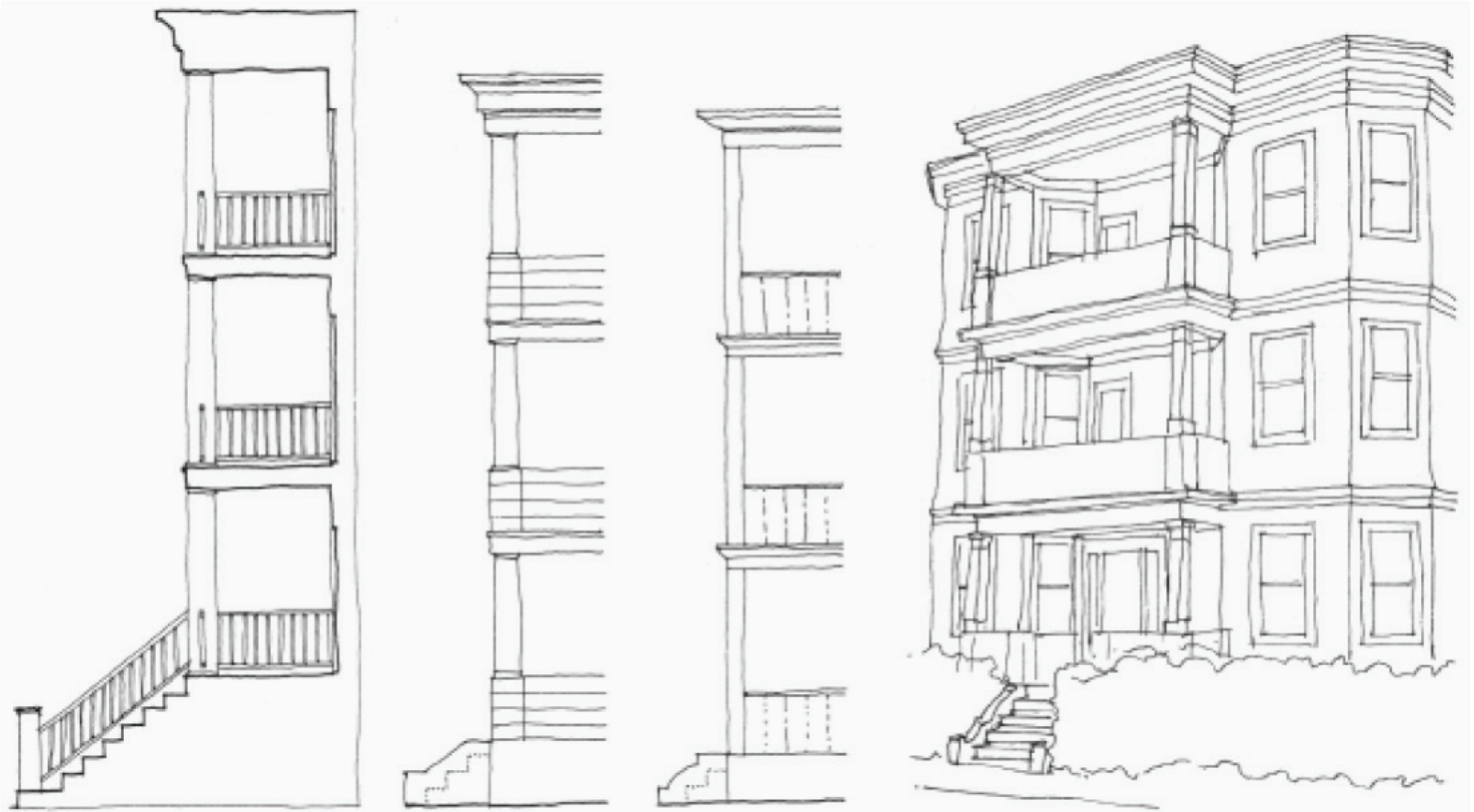


DOOR AND WINDOW DETAILS





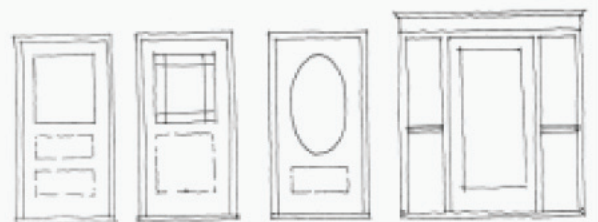




PORCH AND STAIR DETAILS



CORNICE DETAILS



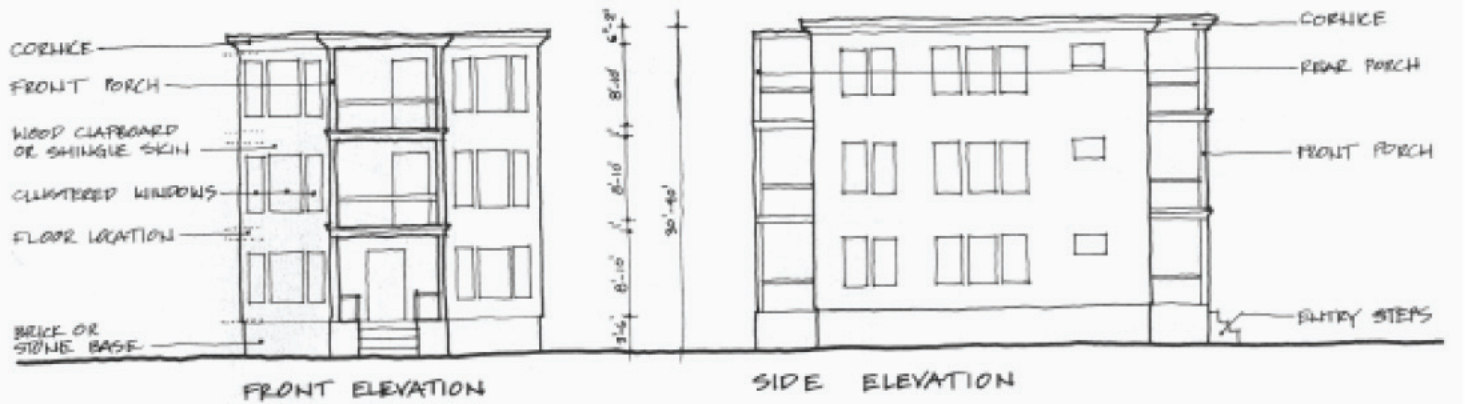
DOOR AND WINDOW DETAILS



DOUBLE BAY WIDE : EXAMPLES

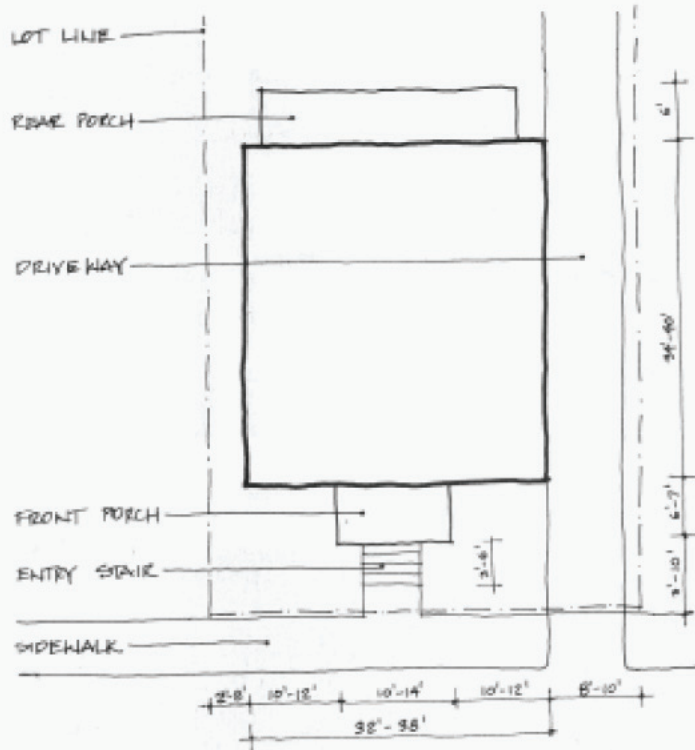
THREE DECKER

36

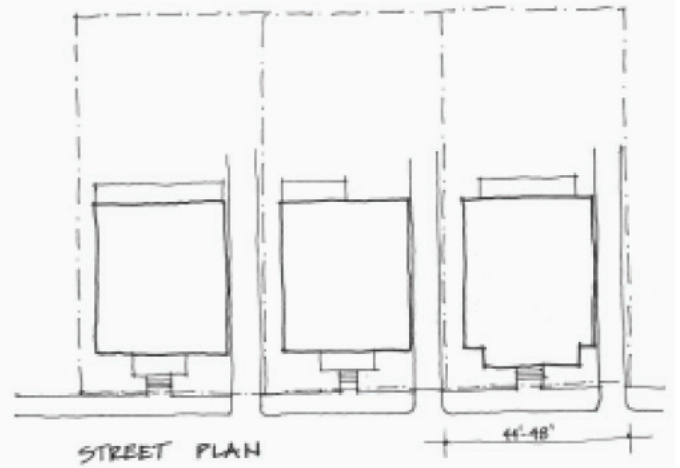


FRONT ELEVATION

SIDE ELEVATION



PLAN

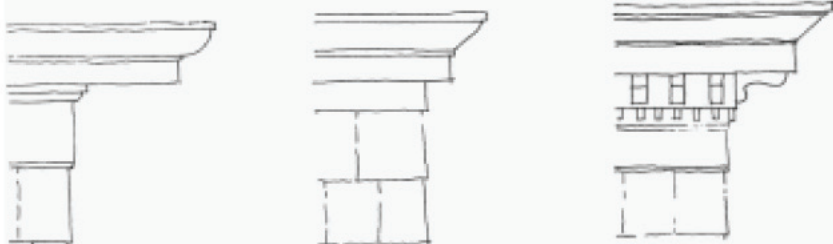


STREET PLAN

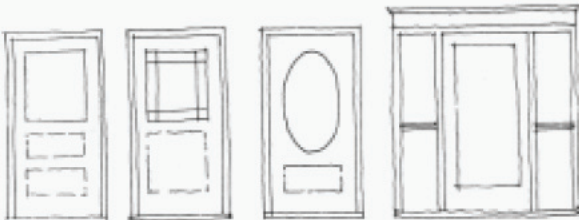
STREET ELEVATION



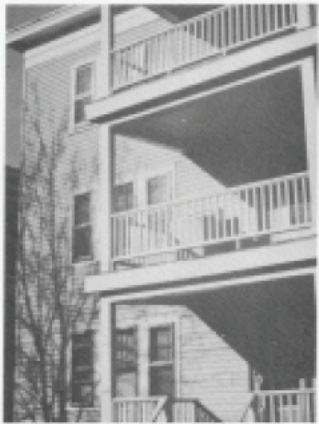
PORCH AND STAIR DETAILS



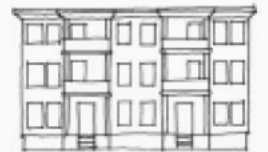
CORNICE DETAILS



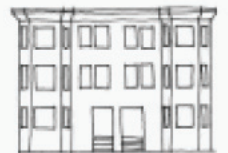
DOOR AND WINDOW DETAILS



PAIRED THREES (A)



PAIRED THREES (B)



SIX FAMILY

42

- CORNICE
- WRAPS AROUND BUILDING BUT MAY BE MORE ELABORATE AT FRONT.
  - WILL BE OF WOOD
  - USUALLY ENGAGES PORCHES

- PORCHES
- ALWAYS PAIRED
  - MANY VARIETIES
  - RAIL IS USUALLY SOLID
  - EACH PORCH MAY HAVE ITS OWN ENTRY STAIR, OR THEY MAY SHARE ONE IN THE CENTER

- SKILL
- USUALLY WOOD SIDING

- WINDOWS
- DOUBLE HUNG
  - OFTEN CLUSTERED INTO THREE

- DECORATIVE MOULDING
- MAY WRAP ENTIRE BUILDING OR BE ABSENT

- STEPS
- ALWAYS PRESENT
  - MAY BE STONE, BRICK, CONCRETE OR WOOD

- BASE
- MAY BE STONE, BRICK OR LATTICE PANEL AT PORCH



- CORNICE
- MAY OCCUR AT FRONT ONLY
  - USUALLY STONE, SOMETIMES WOOD

- FACING
- USUALLY BRICK, RED OR YELLOW
  - MAY HAVE DECORATIVE STONE BANDS
  - SOMETIMES WOOD

- WINDOWS
- DOUBLE HUNG
  - OFTEN PAIRED
  - WILL FREQUENTLY HAVE STONE SILLS AND SPANDREL

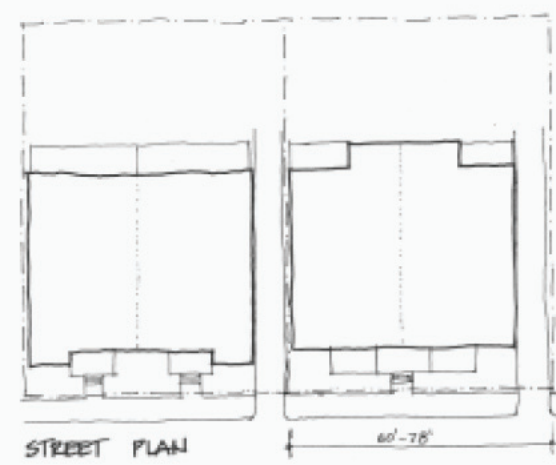
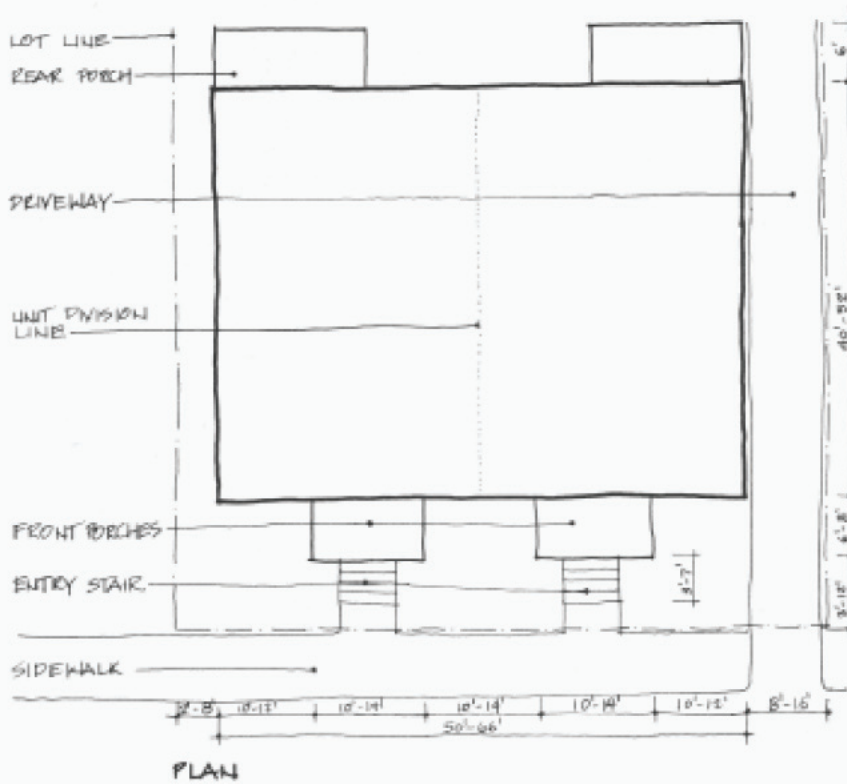
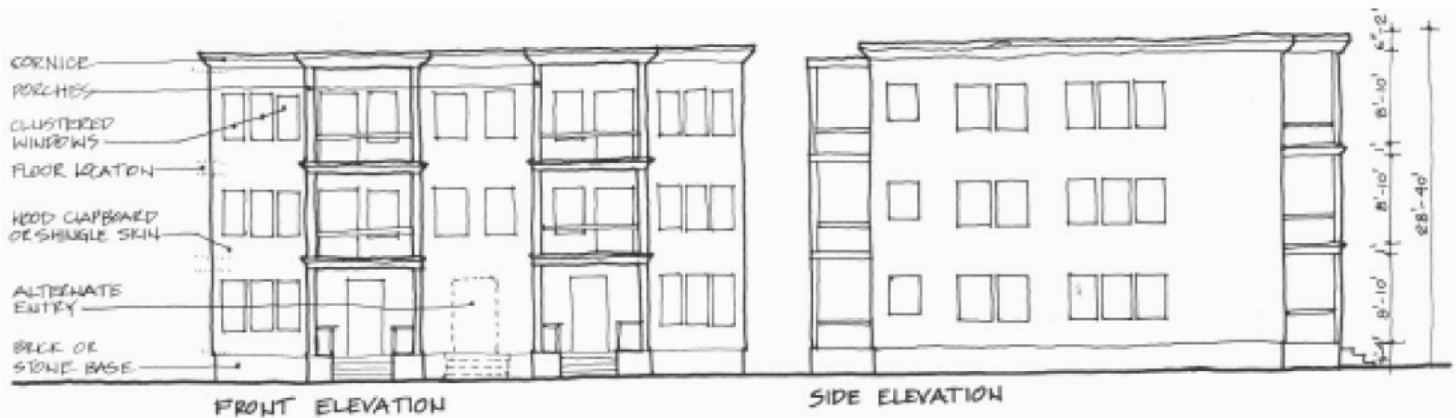
- ENTRY
- SINGLE OR PAIRED

- STEPS
- BRICK OR CONCRETE OR STONE

- BAYS
- 3 SIDED OR BOWED

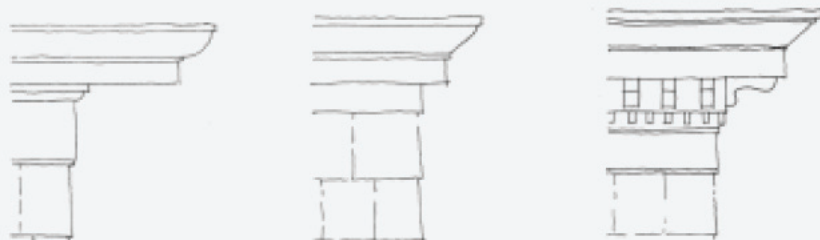
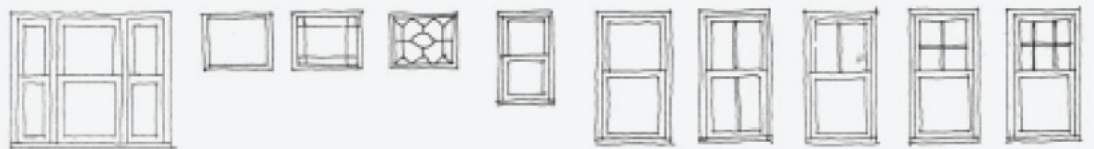




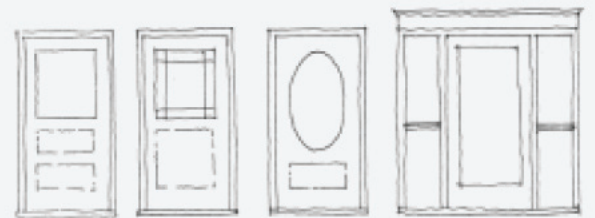




PORCH AND STAIR DETAILS



CORNICE DETAILS



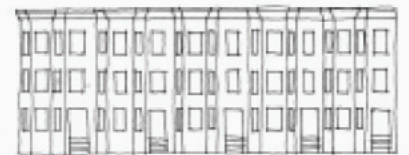
DOOR AND WINDOW DETAILS



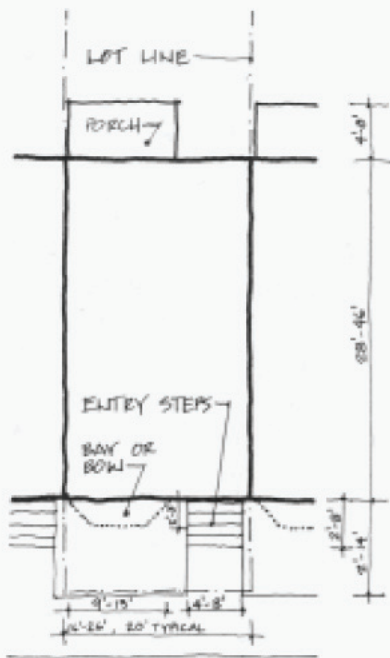
PAIRED THREES (B) : EXAMPLES

SIX FAMILY

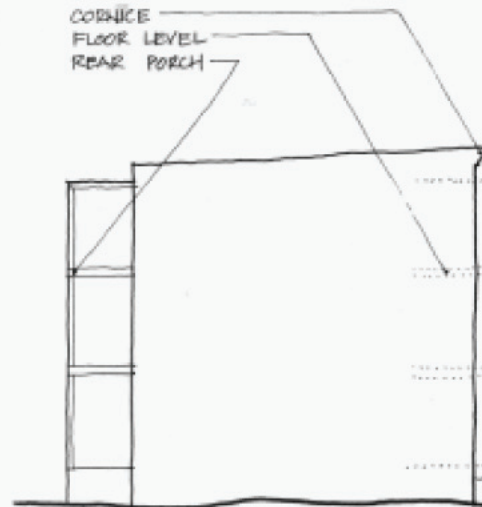
50



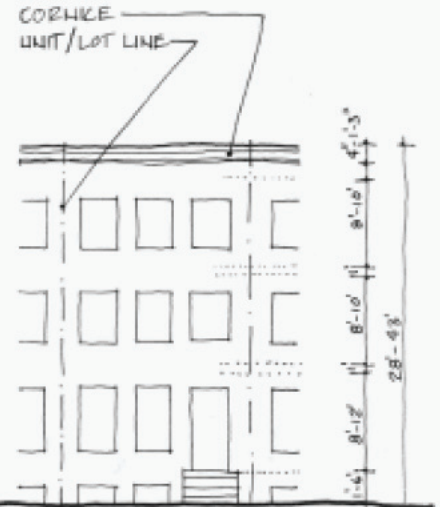




PLAN

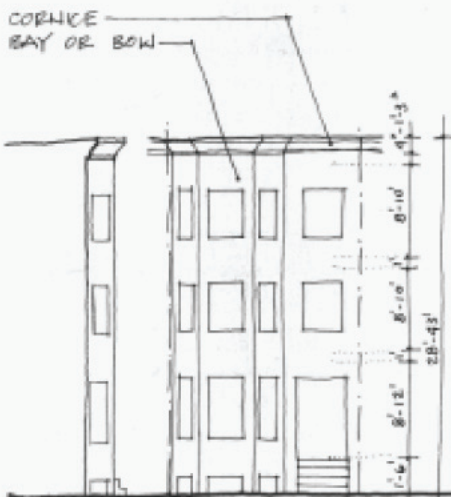


SIDE ELEVATION

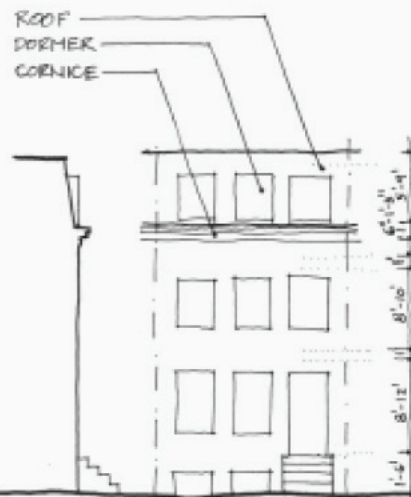


FRONT ELEVATION

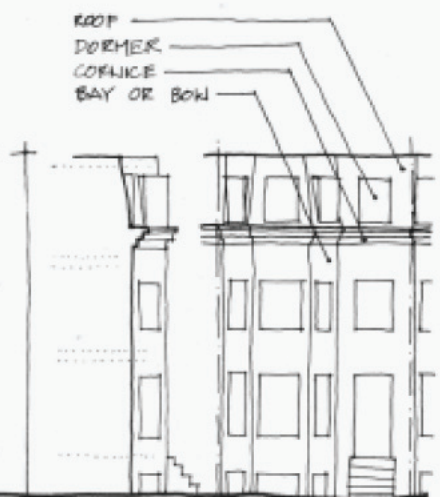
FLAT FRONT WITH CORNICE



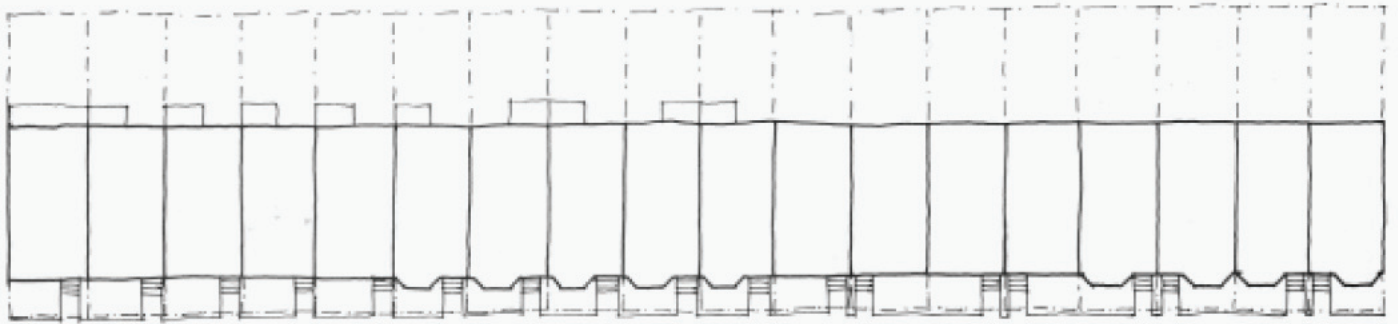
SIDE FRONT BAY/BOW FRONT WITH CORNICE



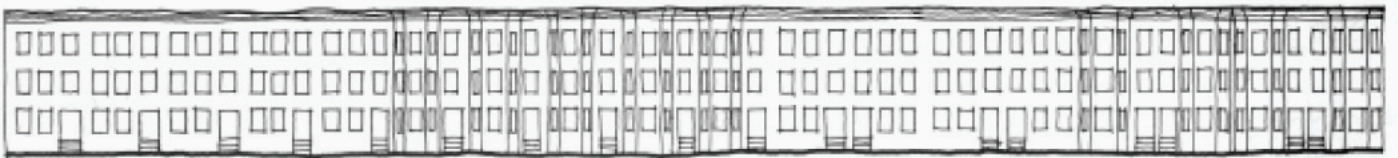
SIDE FRONT FLAT FRONT WITH ROOF



SIDE FRONT BAY/BOW FRONT WITH ROOF

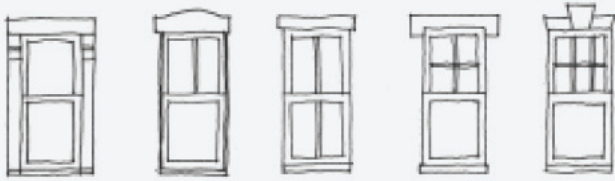


STREET PLAN



STREET ELEVATIONS

55	ROWHOUSE	CHARACTERISTICS
----	----------	-----------------



WINDOW DETAILS



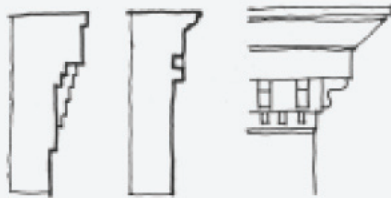
DORMER DETAILS



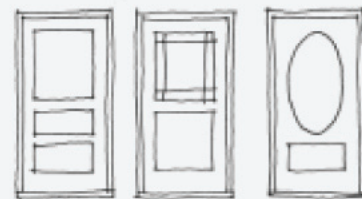
ENTRY AND STAIR DETAIL



ENTRY AND STAIR DETAILS



CORNICE DETAILS



DOOR DETAILS







