

# PLAN: Mattapan

June 25, 2019



# Getting Around In Mattapan



## Today's Agenda

- 1 Why Are We Here Tonight?
- 2 About PLAN: Mattapan
- 3 Why Plan For Mobility?
- 4 Today's Activity
- 5 Share & Report Back
- 6 What Happens Next?



# 1

## Why Are We Here Tonight?

---

*Mobility is essential to **quality of life**. Streets and transit service connect us to opportunity and one another. How we get around must be safe and reliable for everyone.*

## **Let's Talk About Mobility:**

- How do you get around in Mattapan?
- Where are the opportunities to improve how you get around?
- What are your priorities for PLAN: Mattapan?
- Please remember to take home the Mattapan Data Packet!

# 2

## About PLAN: Mattapan

*What is PLAN: Mattapan?  
What Have We Heard So Far?*



# What is PLAN: Mattapan?

- Mayoral initiative announced in June 2018 and launched in October 2018
- Comprehensive vision and implementation strategy for Mattapan to guide future growth and investment through lens of “preserve, enhance and grow”
- PLAN: Mattapan will identify short-, mid-, and long-range community goals, focusing on short
- To leverage interest in the Mattapan community to create new opportunities for housing, jobs, improved access and mobility, and other community benefits



## **Boston Planning & Development Agency**

**Housing** – Department of Neighborhood Development (Office of Housing Stability, Boston Home Center, Neighborhood Housing Development), Fair Housing & Equity

**Economic Development** – Mayor’s Office of Economic Development (Small Business / Main Streets), Office of Workforce Development, Office of Financial Empowerment

**Open Space & Parks** - Boston Parks and Recreation Department, Department of Conservation Resources (DCR)

**Transportation** – Boston Transportation Department, Boston Public Works Department, MBTA, MassDOT

**Environment/Sustainability/Climate Change** City’s Environment Department

**Mayor’s Office of Arts & Culture**

**Boston Centers for Youth & Families**

**Age Strong Commission**

**Community Preservation Act (CPA)**

**Office of Immigrant Advancement**

**Office of Neighborhood Services (ONS)**

**Mayor’s Youth Council / Dept of Youth Engagement**

**Commission for Persons with Disabilities**

**Boston Police Department**

- WORKSHOPS
- COMMUNITY ENGAGEMENT EVENTS  
*Chat with a Planner  
Pop-Ups and/or Community Events*
- FUTURE WORKSHOPS
- FUTURE COMMUNITY ENGAGEMENT EVENTS

## WHAT WE HAVE DONE

2018

2019

2020



## FUTURE PROCESS

**We are here**



### Pre-Planning Workshops:

Open House, Envisioning  
Goal Setting, PLAN Scope

### Planning Workshop Topics:

Workforce development, Transportation & Mobility  
Housing, Jobs and Businesses, Neighborhood Identity  
Arts + Culture, Open Space & Climate  
City and Neighborhood Resource Fairs

**Drafting Plan Recommendations**  
**Reviewing PLAN: Mattapan Drafts**  
**Strategizing implementation**



## **PLAN Mattapan will...**

Strengthen the existing culture and stability of the community by supporting affordable housing tenure, creating opportunities for businesses to thrive, and enhancing connections to improve the neighborhood's experience accessing jobs and spaces where people can gather.

# 3

## Why Plan For Mobility?

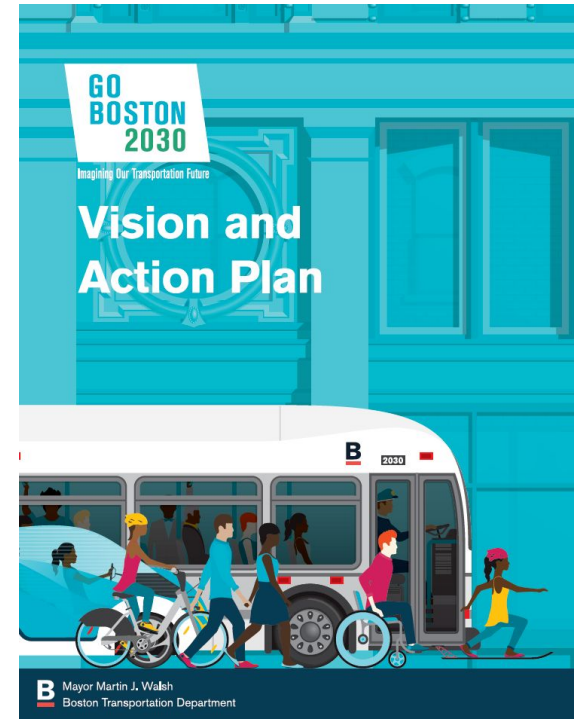
*Which Plans Inform PLAN: Mattapan?  
What About Other Projects?*



# Why Plan for Mobility?

“Boston envisions a city where all residents have better and more equitable **travel choices**, where efficient transportation networks foster **economic opportunities**, and where the City has taken steps to prepare for climate change.

Whether traveling by transit, on foot, on a bike, or by car, Bostonians will be able to **access all parts of the city safely and reliably.**”

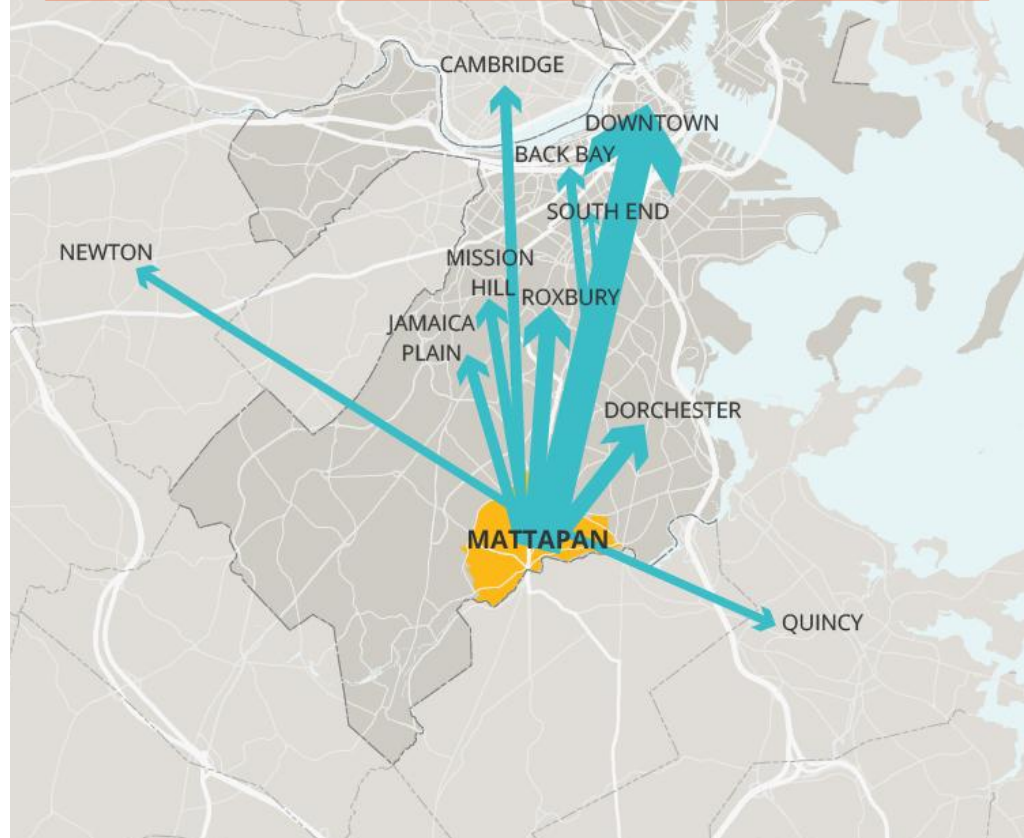


# Why Plan for Mobility?

**Jobs have grown beyond downtown, but transit has not (Back Bay, LMA, Seaport, Logan, Kendall, Logan, etc.)**

Many Mattapan residents commute to these employment centers.

## Top 10 Places of Work for Mattapan Residents

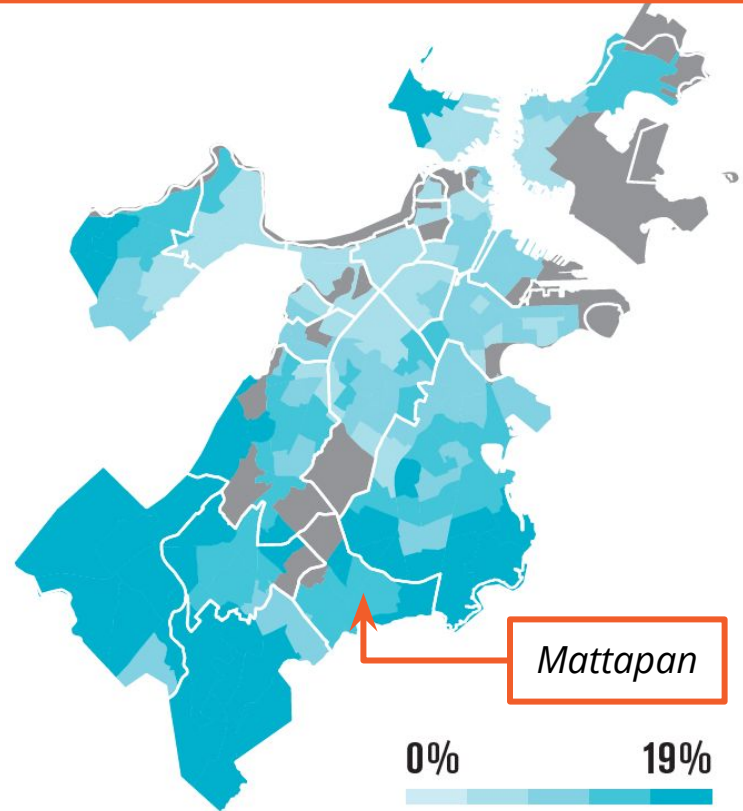


# Why Plan for Mobility?

**Neighborhoods without good transit access experience higher transportation costs.**

Mattapan has limited access to rail, key bus routes, Bluebikes, and carshare.

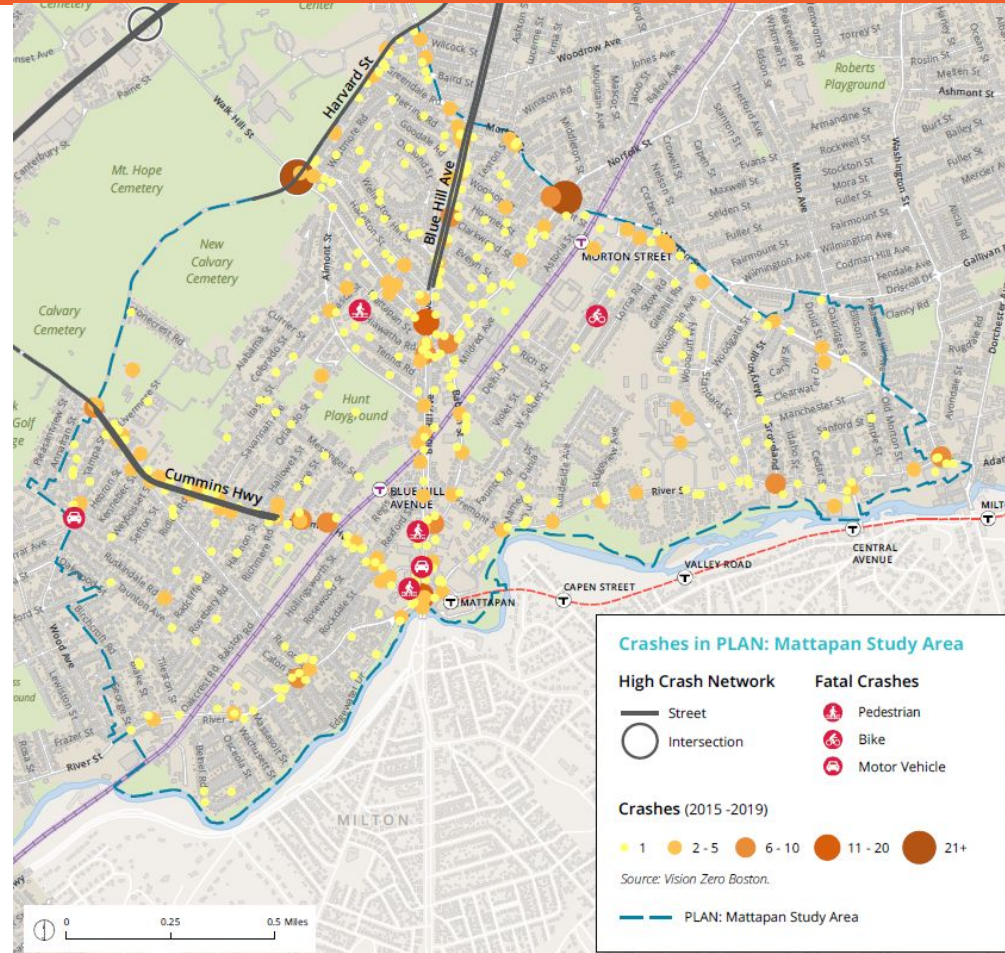
## How Much Household Income Goes to Mobility?



# Why Plan for Mobility?

**Most crashes are found in areas with wider roads, more cars, and higher speeds.**

Mattapan has experienced several fatal crashes in recent years.



## You need better and more reliable ways to get around in Mattapan.

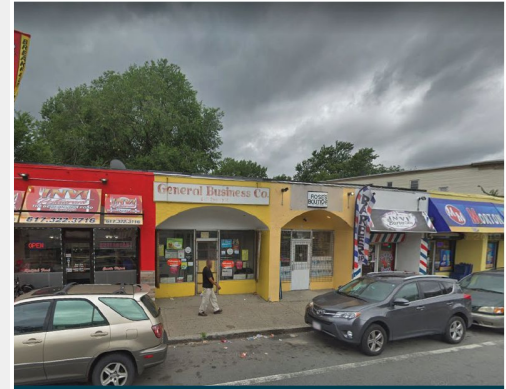
### PLAN: Mattapan Top Goals (From April 22 meeting)



Support homeownership  
across all income levels



Improve transit/mobility  
options and experience



Create opportunities for  
new business types

# Why Plan for Mobility?

## You told us it's hard, and often unsafe, to travel within Mattapan.

- The street network requires most people to travel on major roads, even when staying in Mattapan.
- The T network almost always requires a transfer.

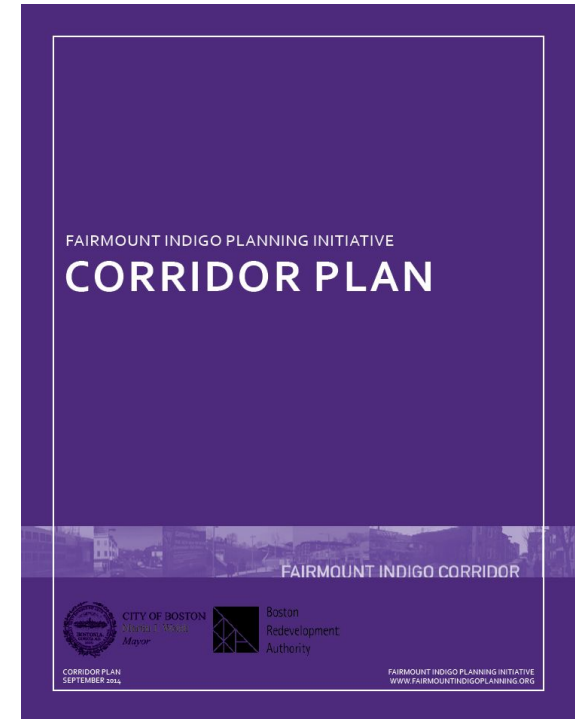




## The Fairmount Line has significant untapped potential to better connect Mattapan.

PLAN: Mattapan will help advance the vision and transportation strategies of the Fairmount Indigo Planning Initiative (FIPI):

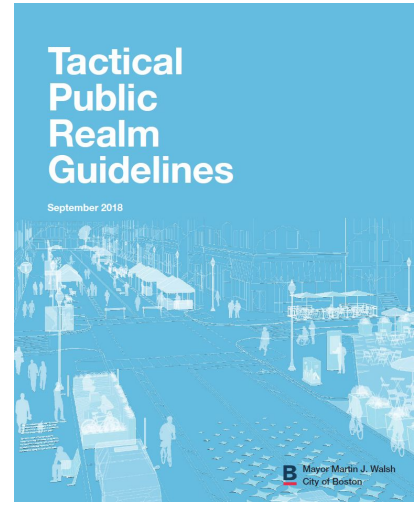
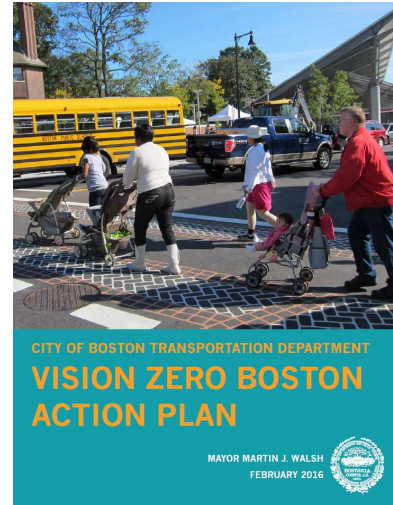
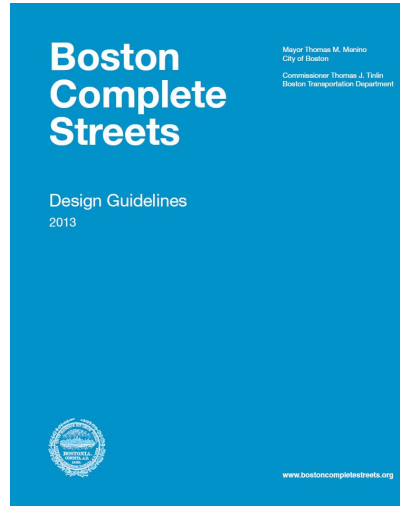
- Improve streetscapes and strengthen connections to rail stations and commercial centers.
- Create mobility hubs to better connect station areas with people walking, biking, riding the bus, and driving.
- Enhance walking and biking connections to open spaces.
- Strengthen wayfinding and signage for connections and destinations to and from stations.



# Why Plan for Mobility?

## How we talk about, plan, and design our streets has changed.

PLAN: Mattapan will use these tools to craft transportation recommendations.



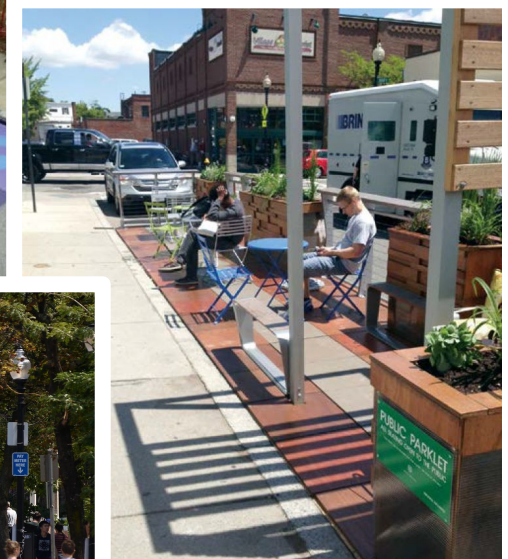
*“Making sure our residents can get around our city in a safe and reliable way is key to ensuring Boston's opportunities extend to all.”*

*- Mayor Martin J. Walsh*

# Why Plan for Mobility?

**Streets are public spaces. At least 56% of City-owned land is streets and sidewalks.**

PLAN: Mattapan is working with the Director of Public Realm to ensure recommendations create a sense of place and bring Mattapan together.



# Why Plan for Mobility?

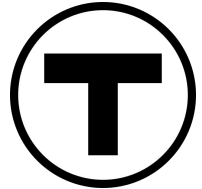
## City and State projects are advancing in Mattapan.

PLAN: Mattapan will help connect the community to these projects:

- Blue Hill Avenue Transportation Action Plan
- Cummins Highway Reconstruction
- Bluebikes Expansion
- Neighborhood Slow Streets
- Vision Zero
- Better Bus Project
- Mattapan Line Transformation
- Automated Fare Collection (AFC) 2.0
- Rail Vision
- Focus40

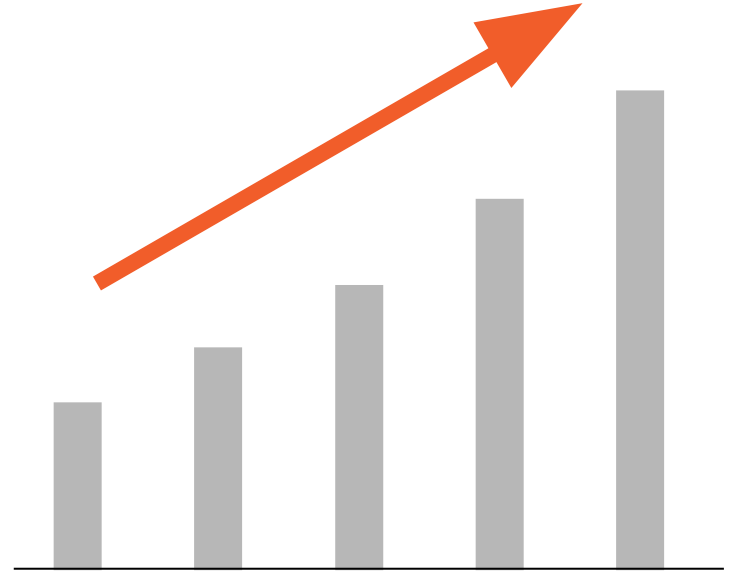


**massDOT**  
Massachusetts Department of Transportation



## Mattapan is growing and how Mattapan residents get around is changing.

- Neighborhood population reached **25,586** in 2017, growing **13.7%** since 2010.
- The number of people commuting by transit grew by **12%** since 2010.
- The number of people commuting by vehicle grew by **16%** since 2010.



# 4

## Today's Activity

---

## Getting Around in Mattapan

### How Do You Travel?

How we travel depends on where we live, where we're going, and the safety and convenience of mobility options available to us. Please help us learn about how you move within and beyond Mattapan so we can ensure PLAN: Mattapan reflects community priorities and achieves Go Boston 2030 goals.

1 Color in the box next to each destination to **show how you primarily travel** for trips that originate in Mattapan.  Example

When I go to...	I travel by...								because...	
	Walk	Bike	Bus	Subway/ Trolley	Fairmount Line	The RIDE	Taxi/ Uber/ Lyft	Drive/ Carpool		Other: _____
Work/School										
Shopping/Errands										
Appointments										
Visit Friends & Family										
Dining/ Entertainment										
Parks/ Open Space										
Other: _____										
Other: _____										

2 Which mode of transportation do you use **most frequently**? Circle it below.



Which mode of transportation would you prefer to use? Why aren't you?

---



---



---



---



---



---

# 5

## Share & Report Back

---



# 6

## What Happens Next?

---

## **PLAN: Mattapan Next Steps:**

### **June**

- Analyzing your input from today

### **July - August**

- Hiring a consultant team- The BPDA is currently reviewing submitted responses to our Request for Proposal (RFP). The selected consultant team will help to support the City team and planning process with their professional expertise on land use, economic development, and transportation.
- Mobile engagement - We will be in the parks, at the T station, and popping up throughout the neighborhood. Details on where we will be and when will be distributed in advance. Please visit [bostonplans.org/work-with-us/procurement](https://bostonplans.org/work-with-us/procurement) to access the RFP.