

An aerial photograph of a city skyline, likely Boston, with a blue overlay. The text 'Fan Pier' is in white and 'PARCELE' is in blue.

# Fan Pier

## PARCELE

Boston Civic Design Commission | June 26, 2018

THE FALLON COMPANY • ELKUS MANFREDI ARCHITECTS

# Design Review Items

## 1 ARCHITECTURE

- Building Heights
- Building Massing/Relationship to 50 Liberty
- Folded Panel Details
- Ground Plane

## 2 PUBLIC REALM - LANDSCAPE

- Plaza Design
  - Relationship to ICA
  - Views and access to Harborwalk and Marina
  - Relationship to 50 Liberty
- Streets and Sidewalks (paving/curb details)

# Building Height





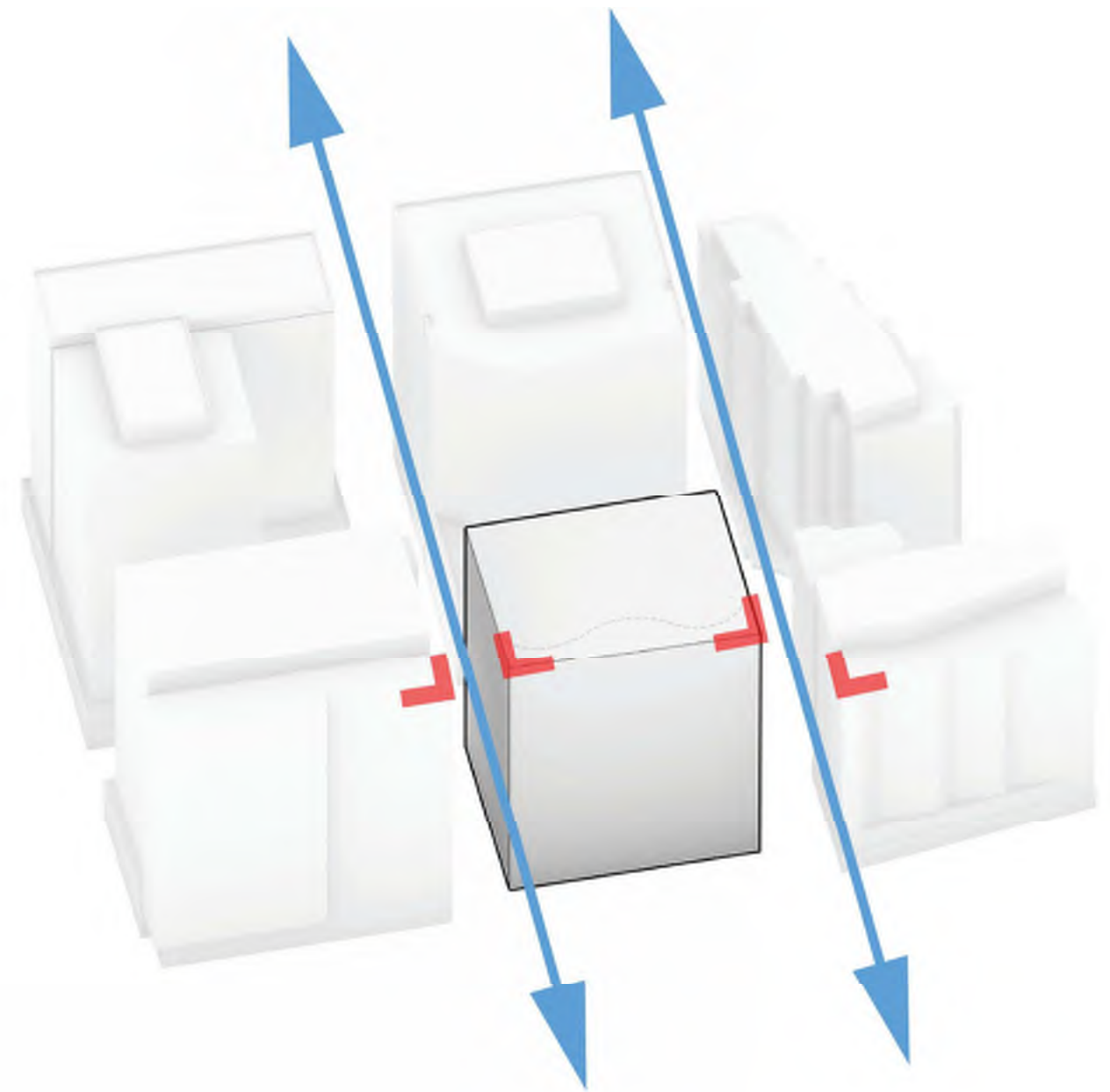
ONE MARINA PARK DRIVE

PARCEL E

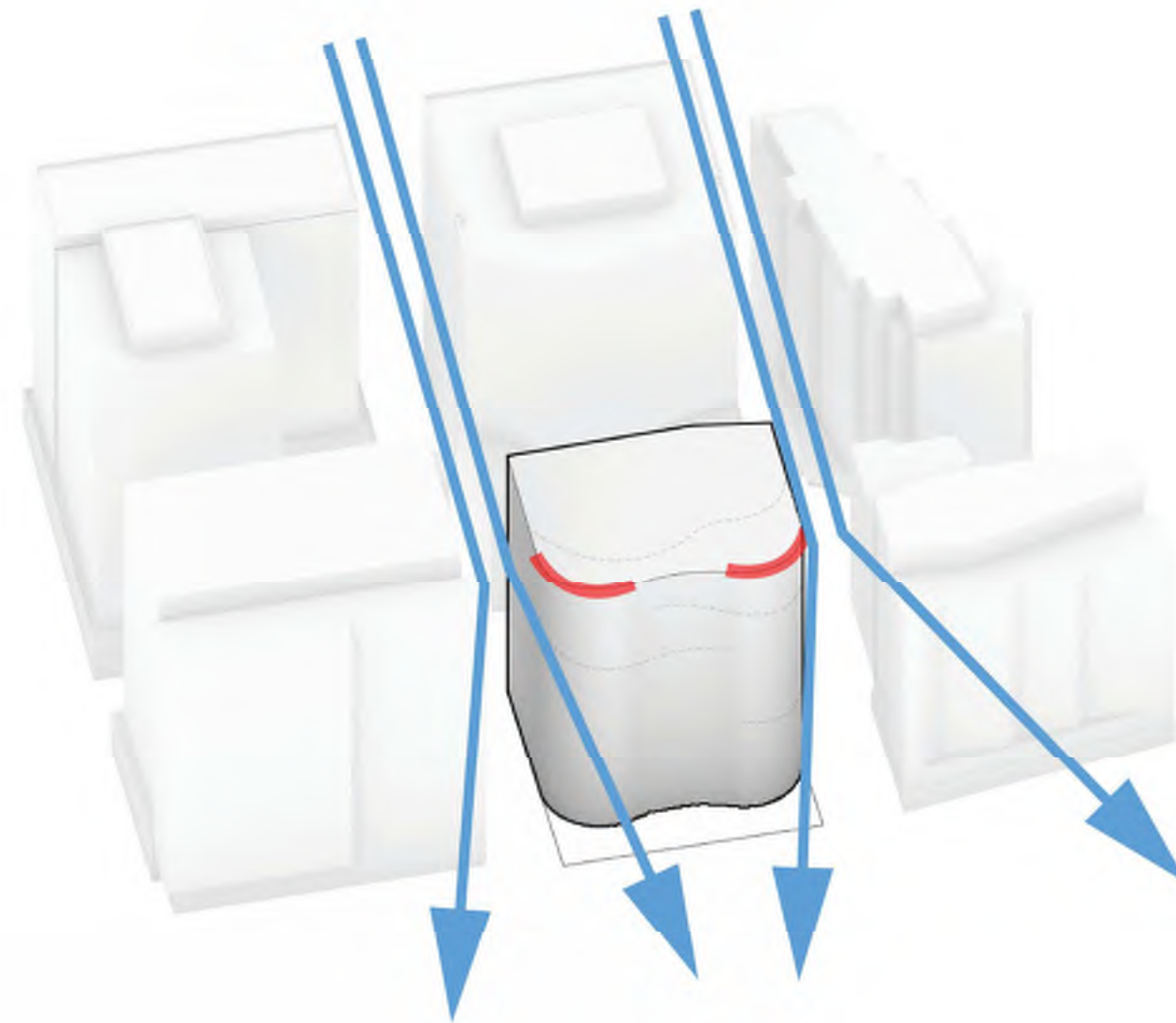
50 LIBERTY

# Building Massing





Edges and View Corridors



**Open View Corridors and Create Open Air Relief**

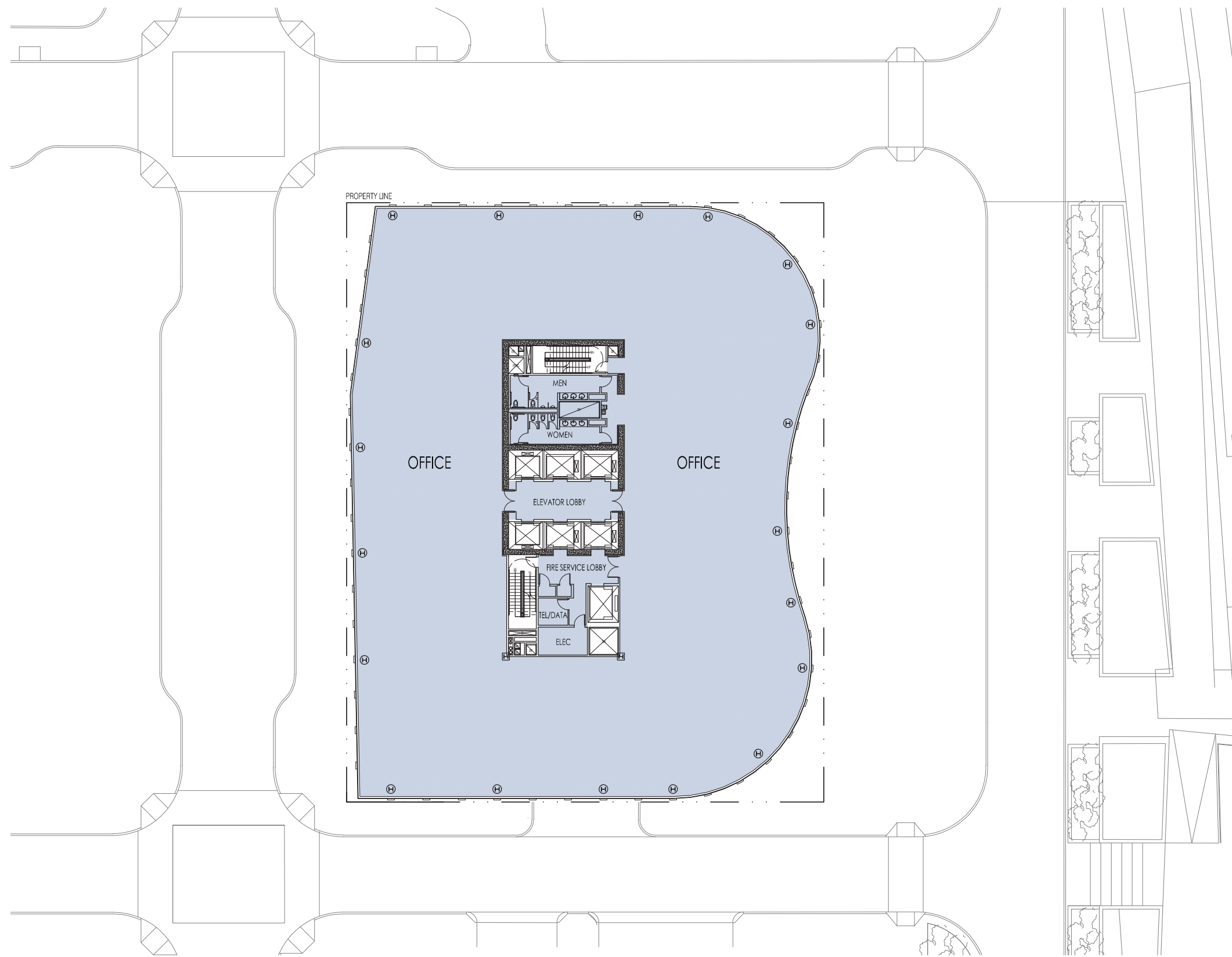


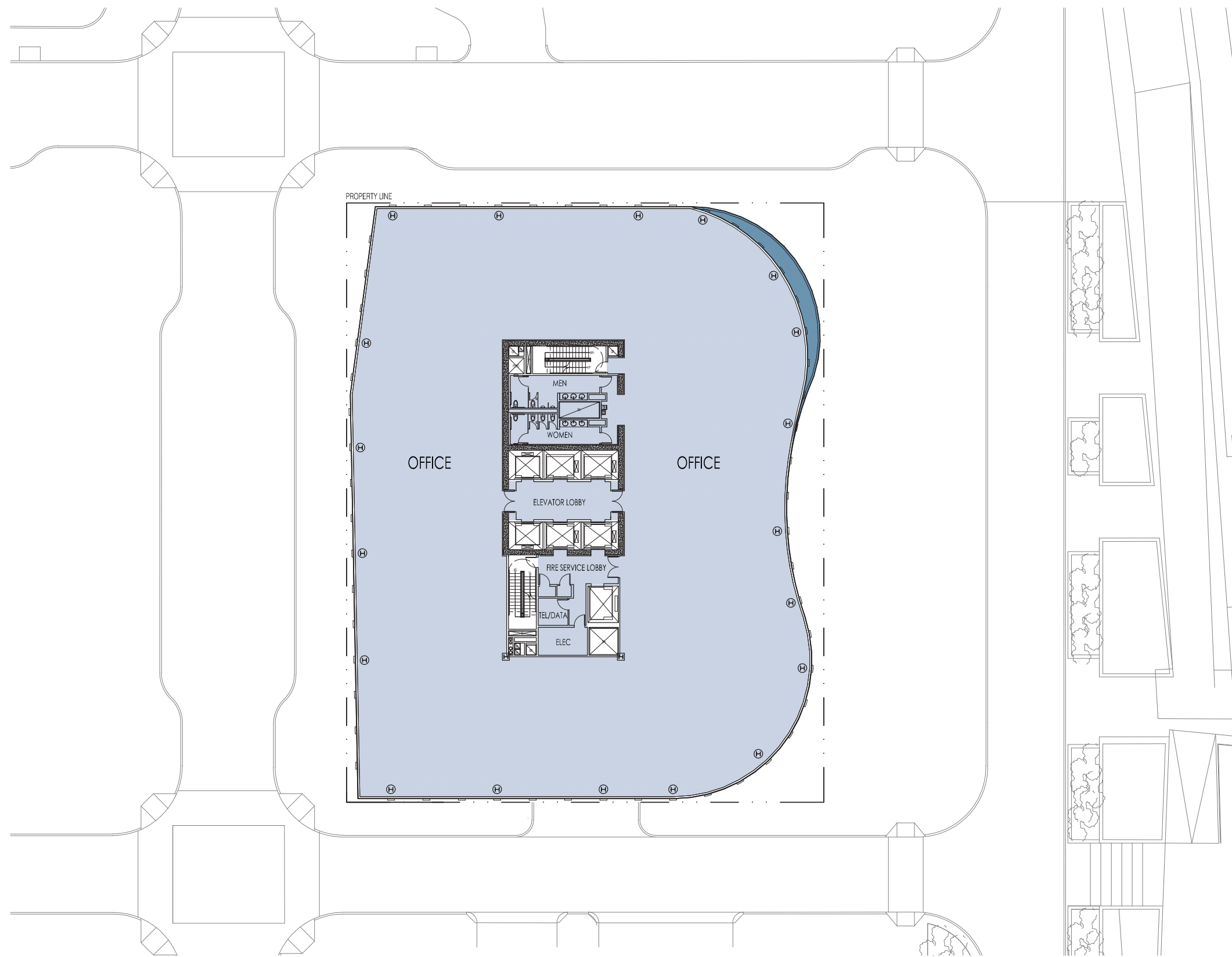
**Establish Setbacks**



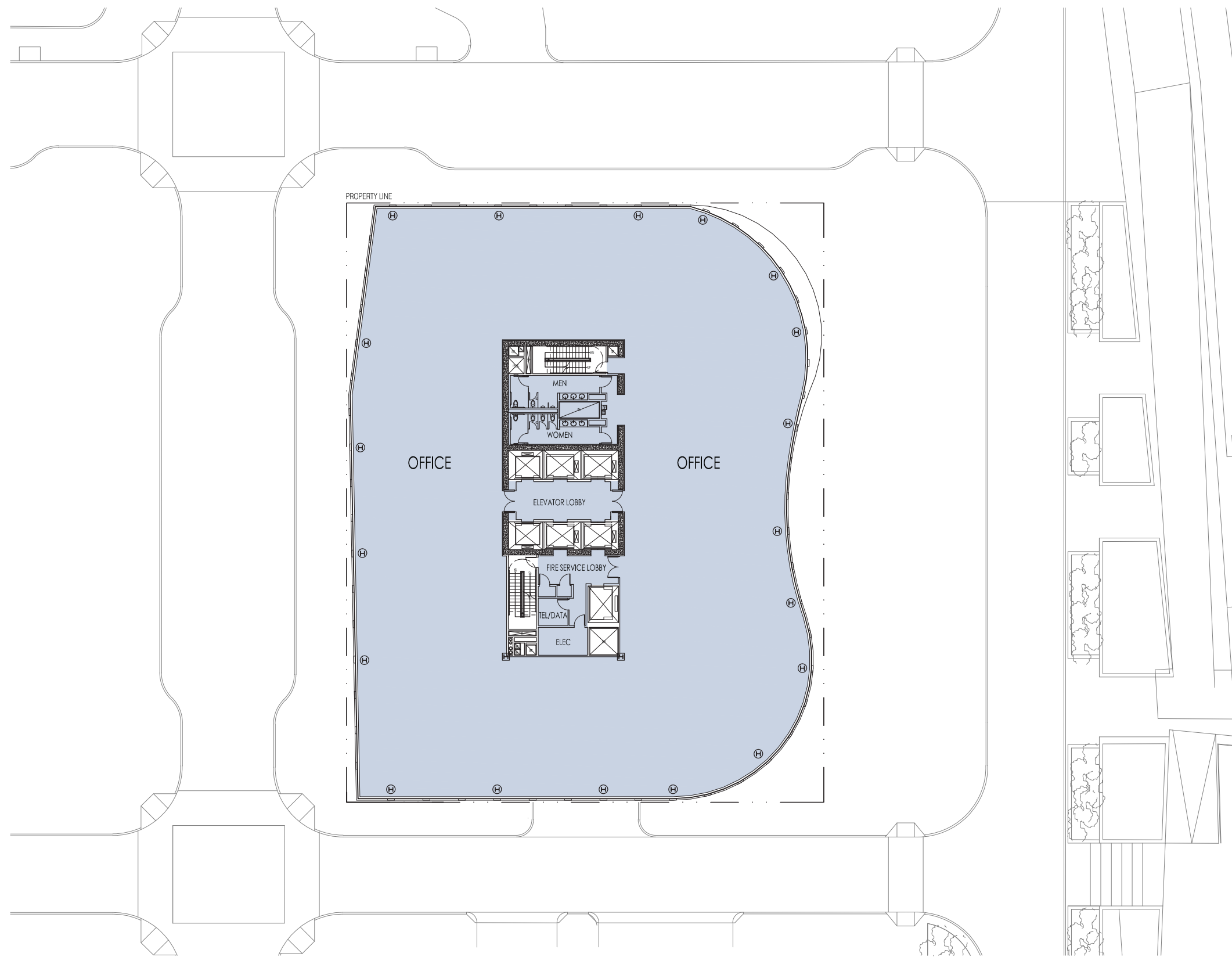


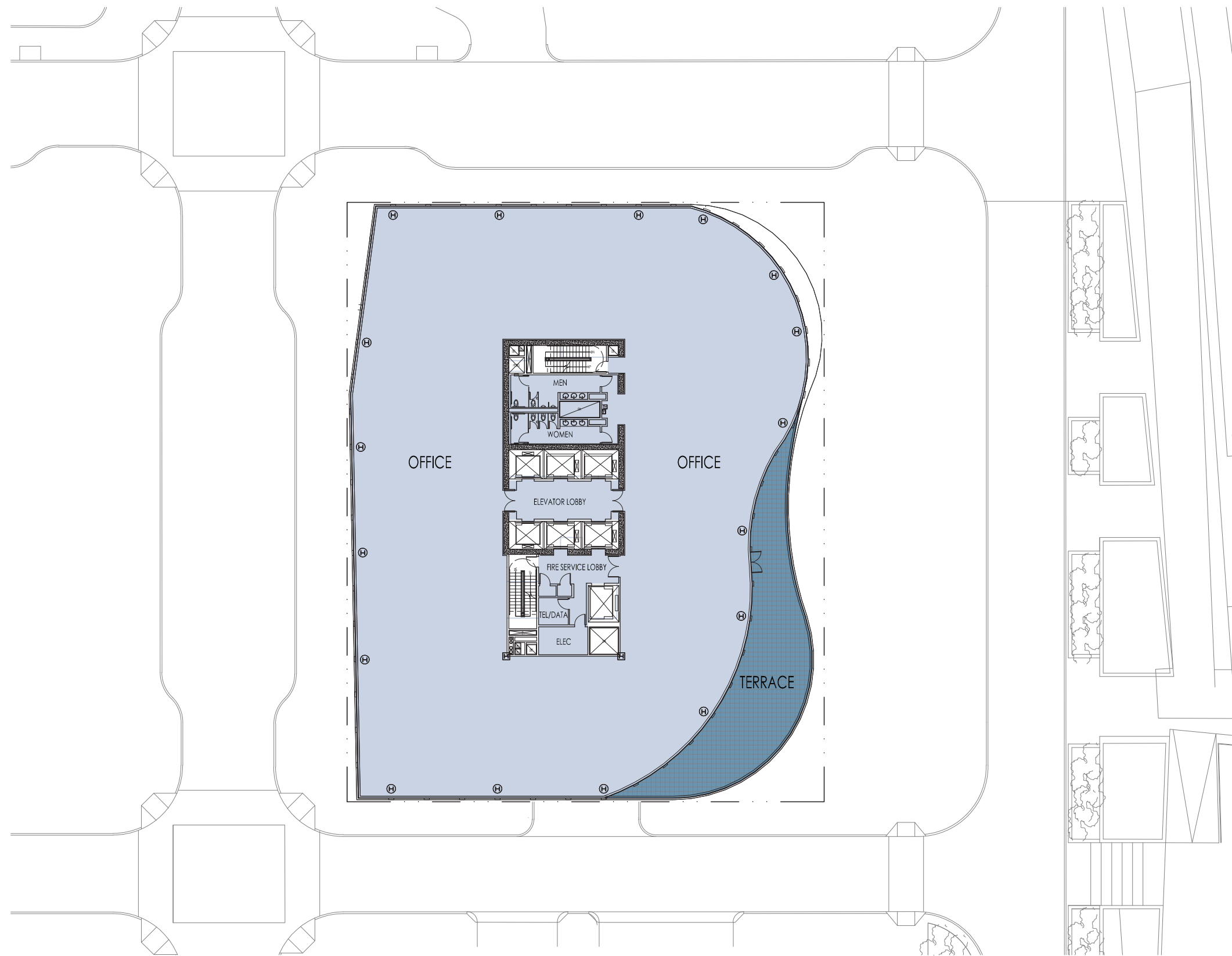
Additional Setback

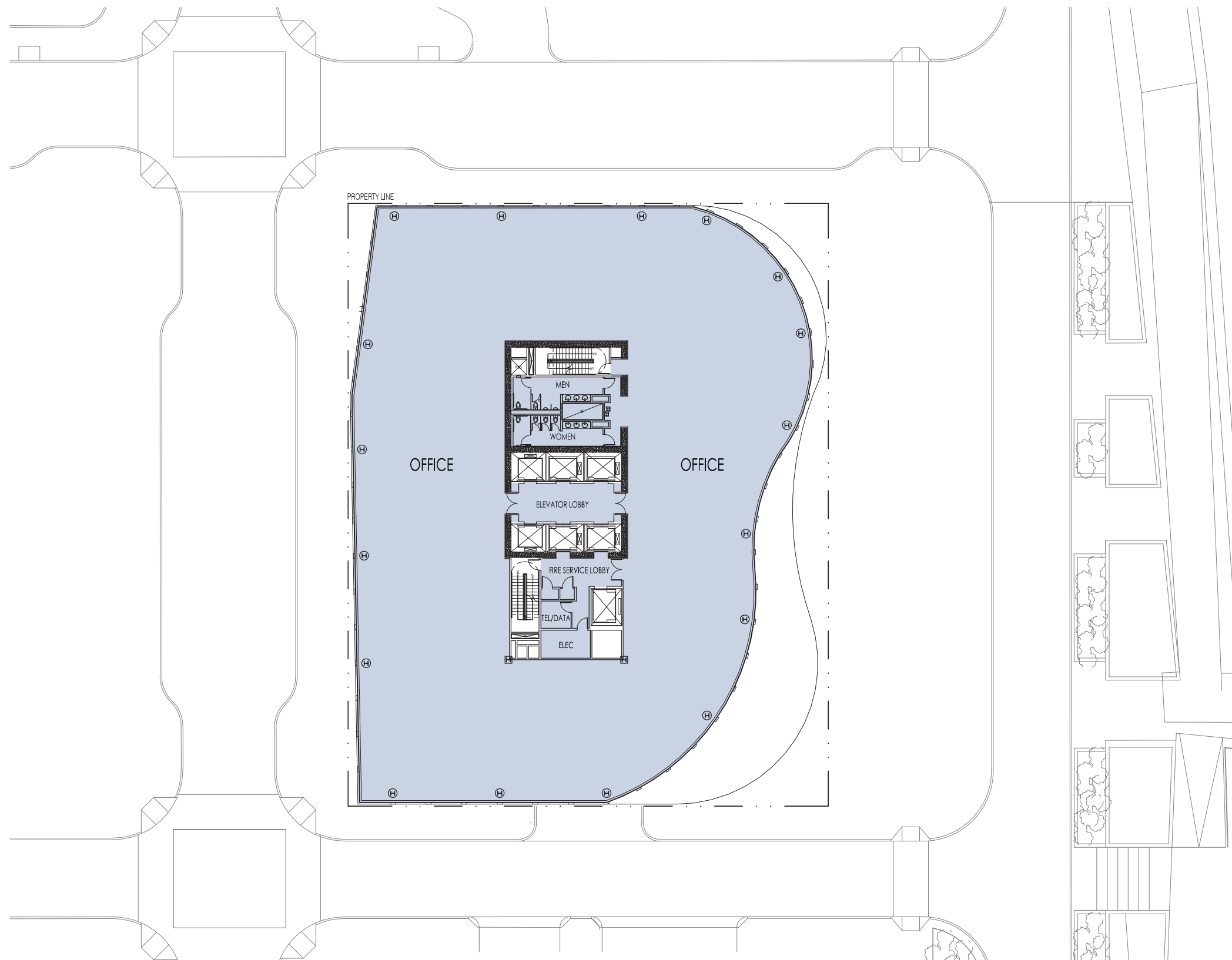




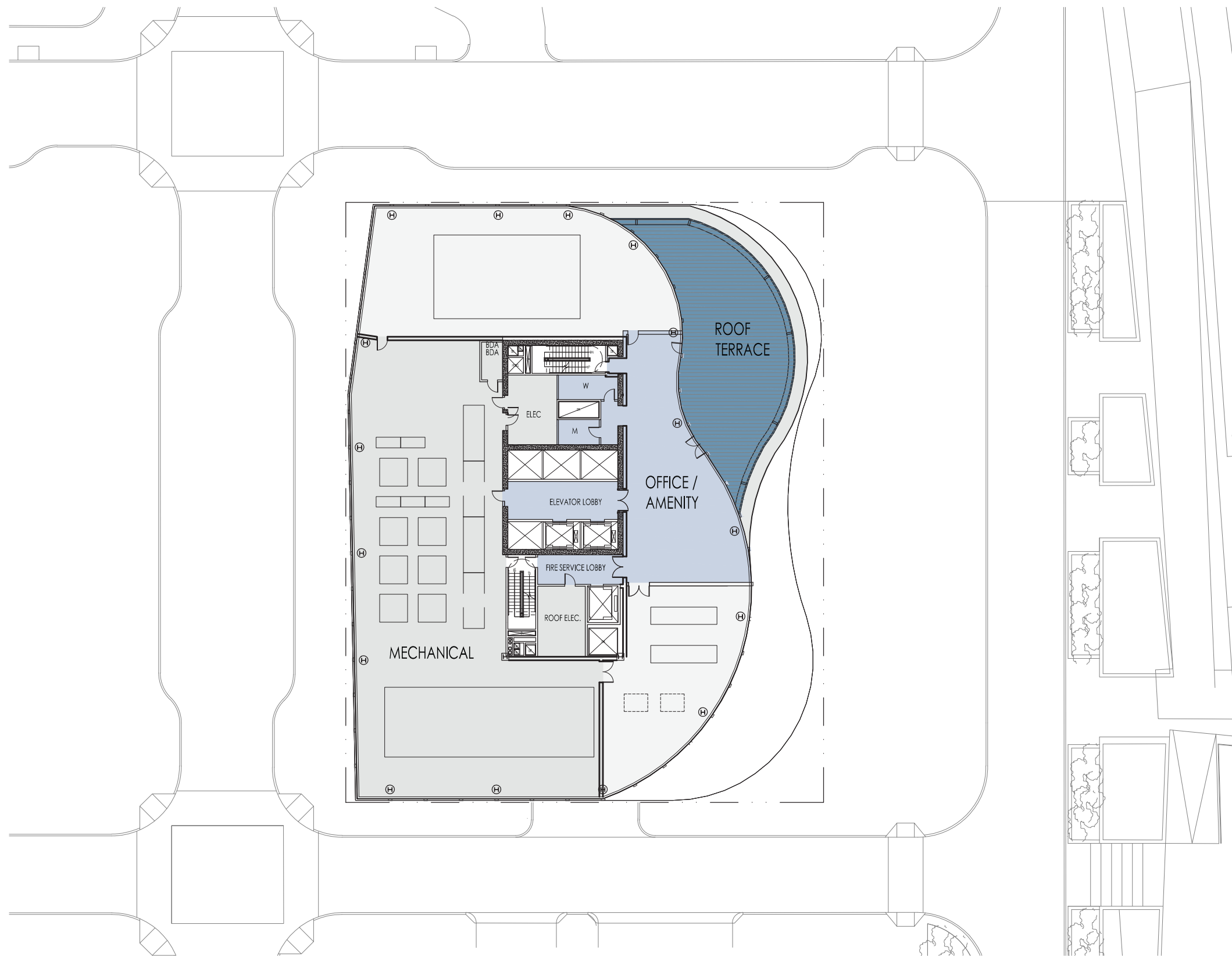


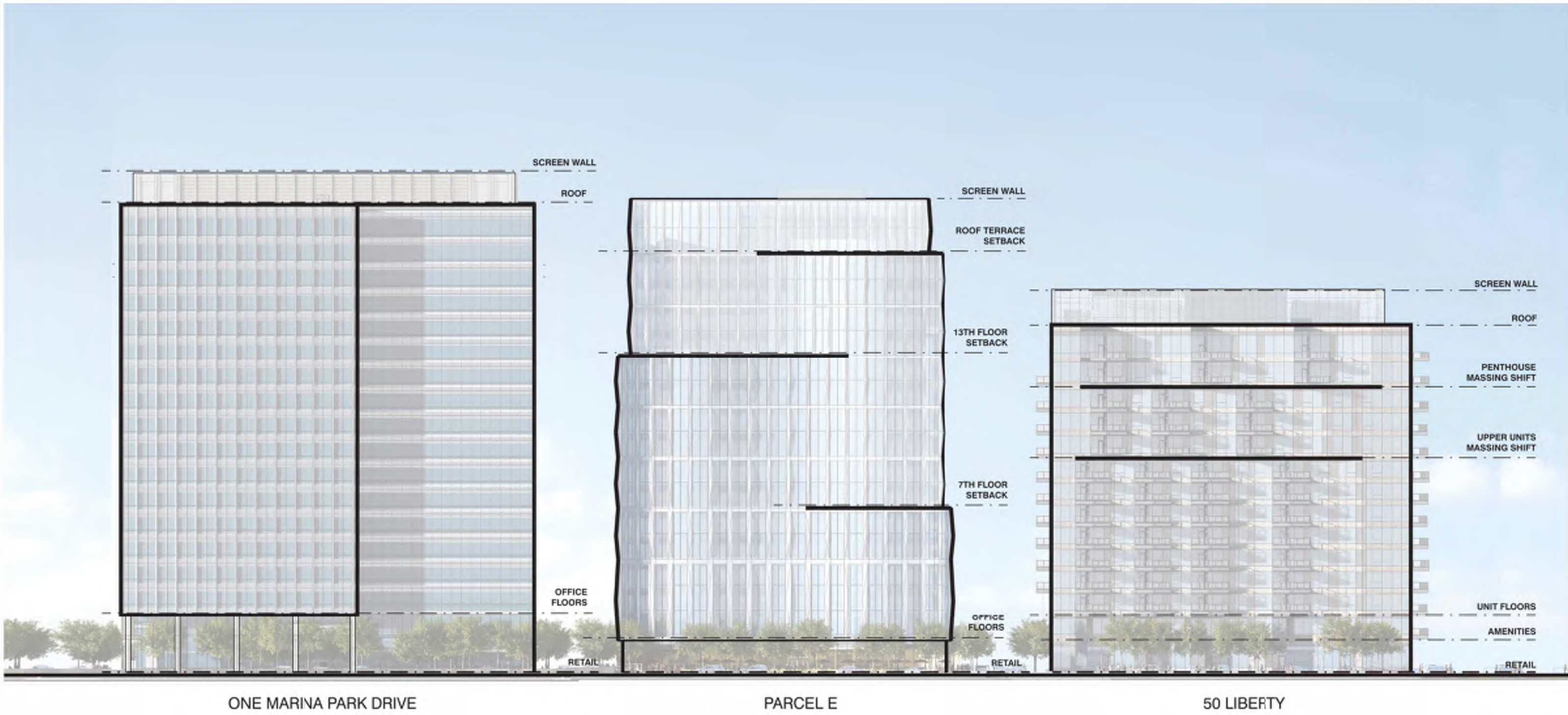


























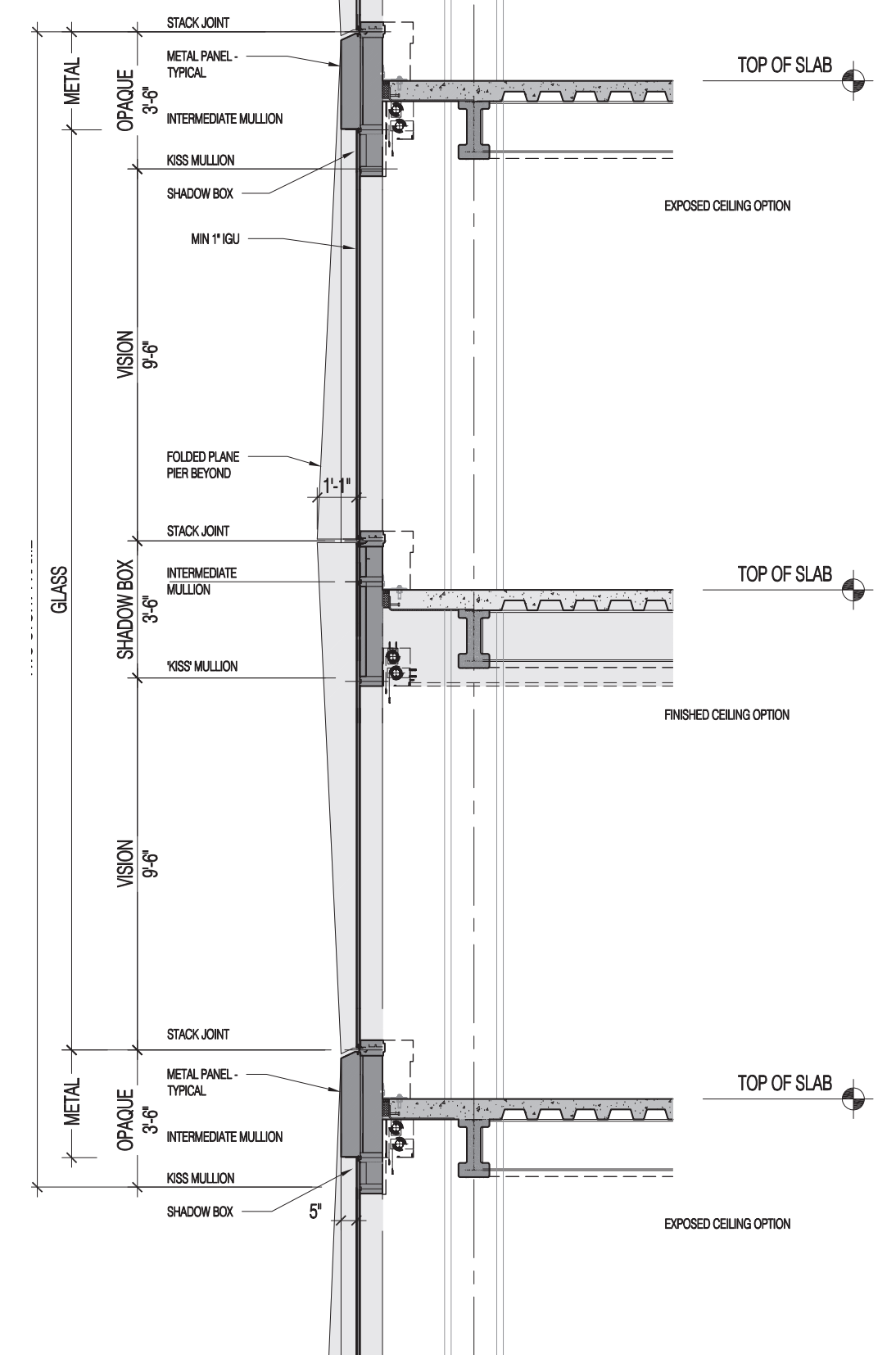
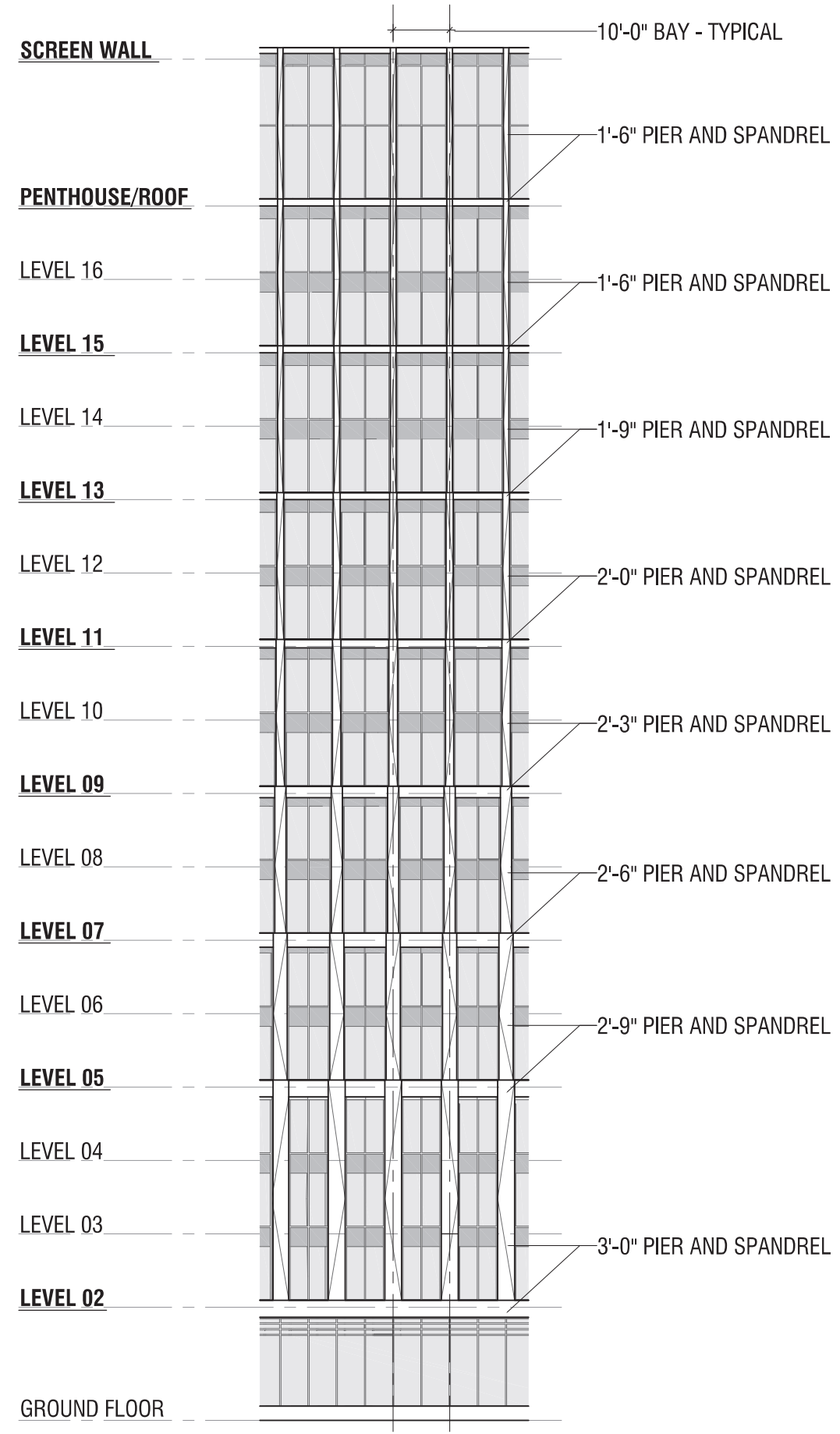


MANFREDI ARCHITECTS

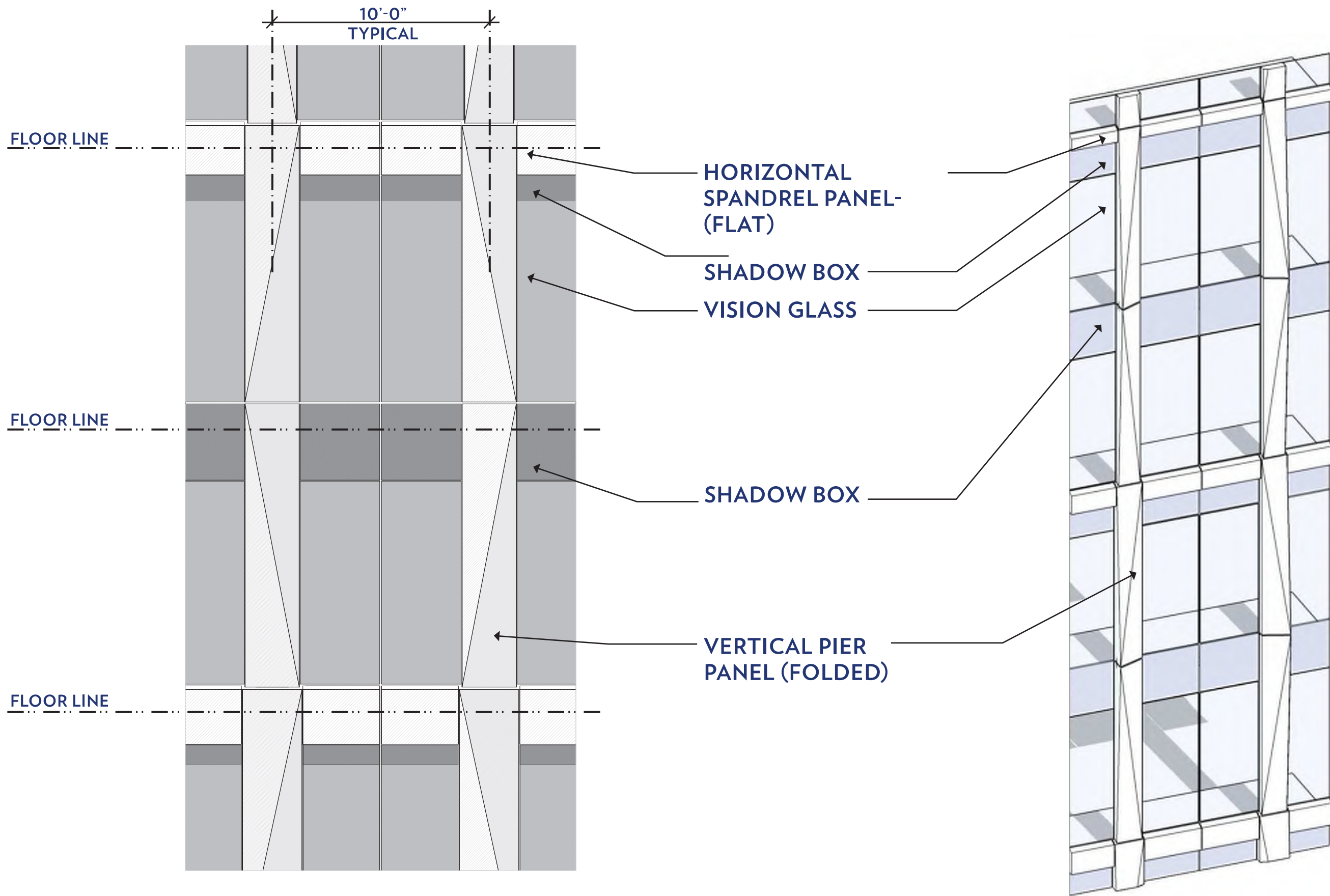


# Folded Panels





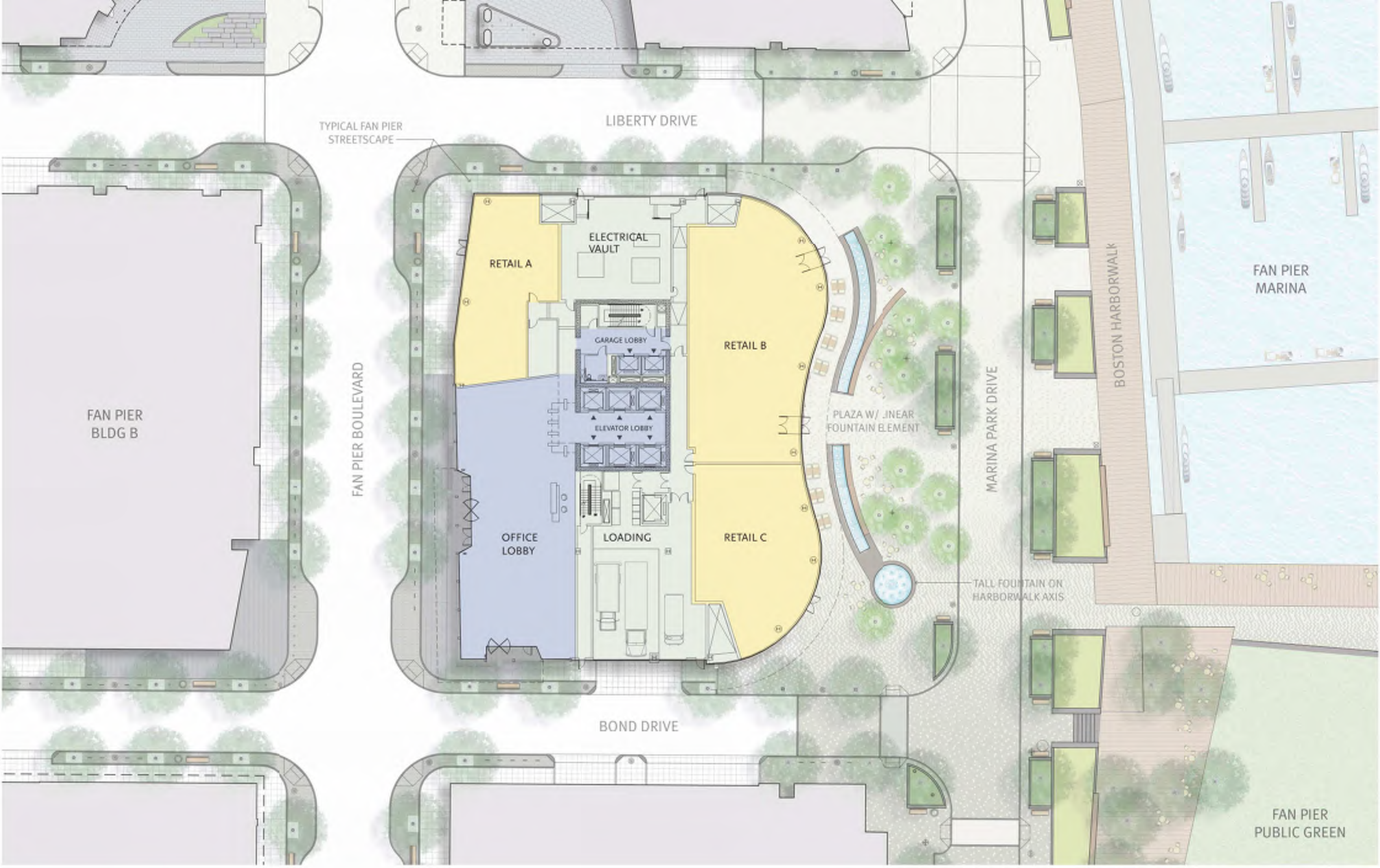
Folded Panel Details - Typical Section and Elevation Diagram



Folded Panel Details - Typical Panel Elevation and Axonometric

# Ground Plane









50 LIBERTY

PARCEL E

ONE MARINA PARK DRIVE



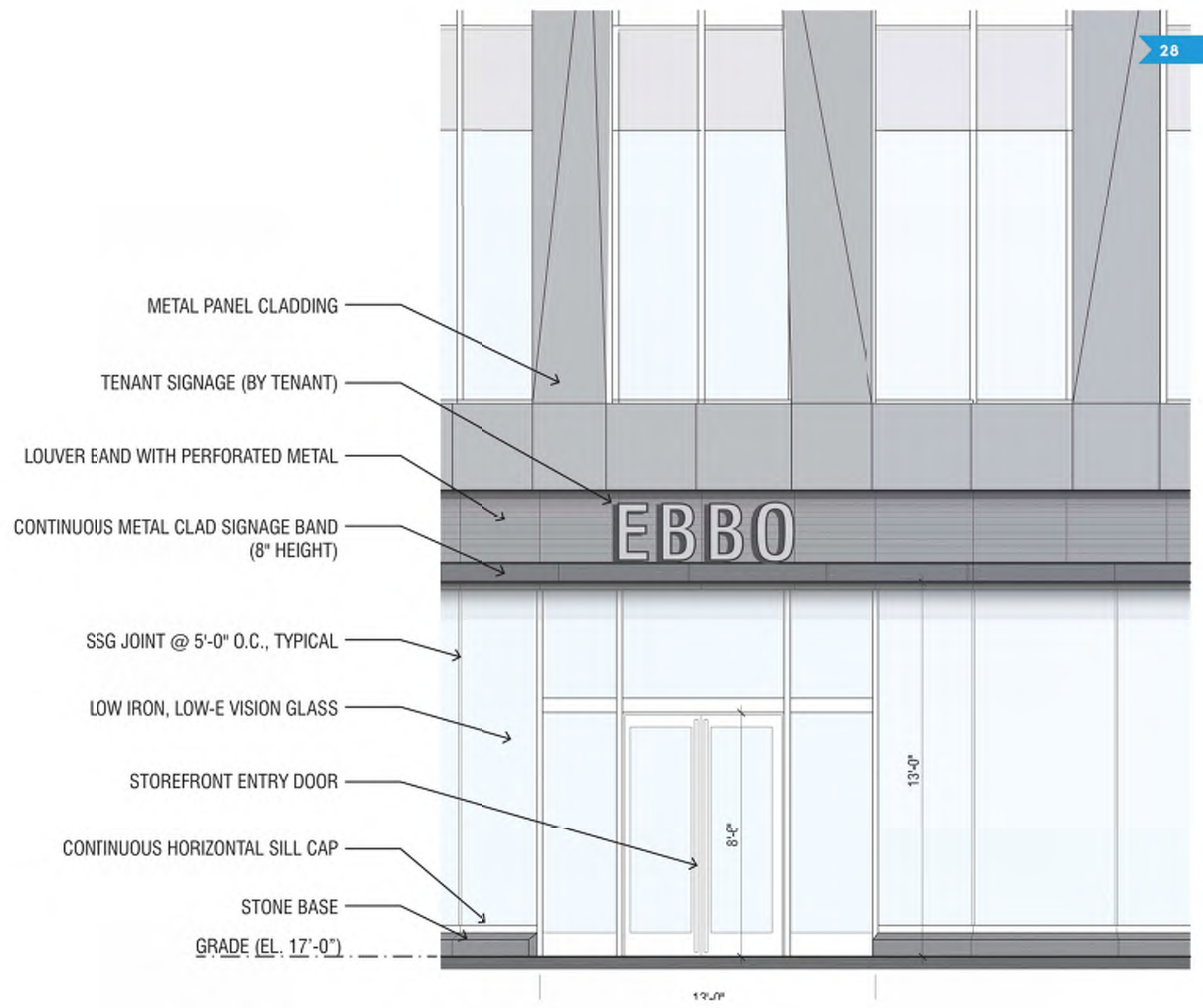
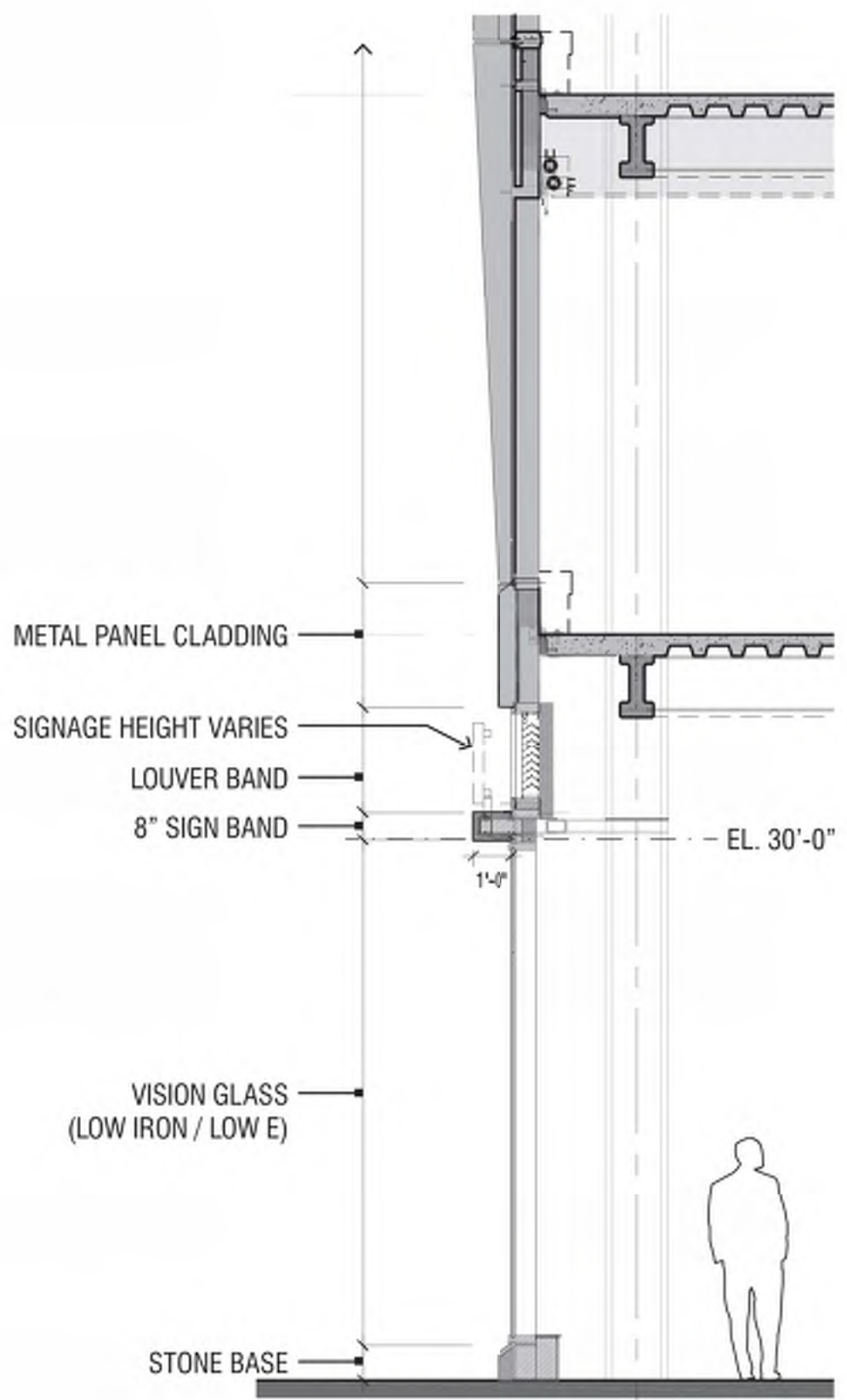


ONE MARINA PARK DRIVE

PARCEL E

50 LIBERTY





Retail Storefront - Enlarged Elevation





Retail Storefront - One Story Base





View From Fan Pier Boulevard - Lobby View

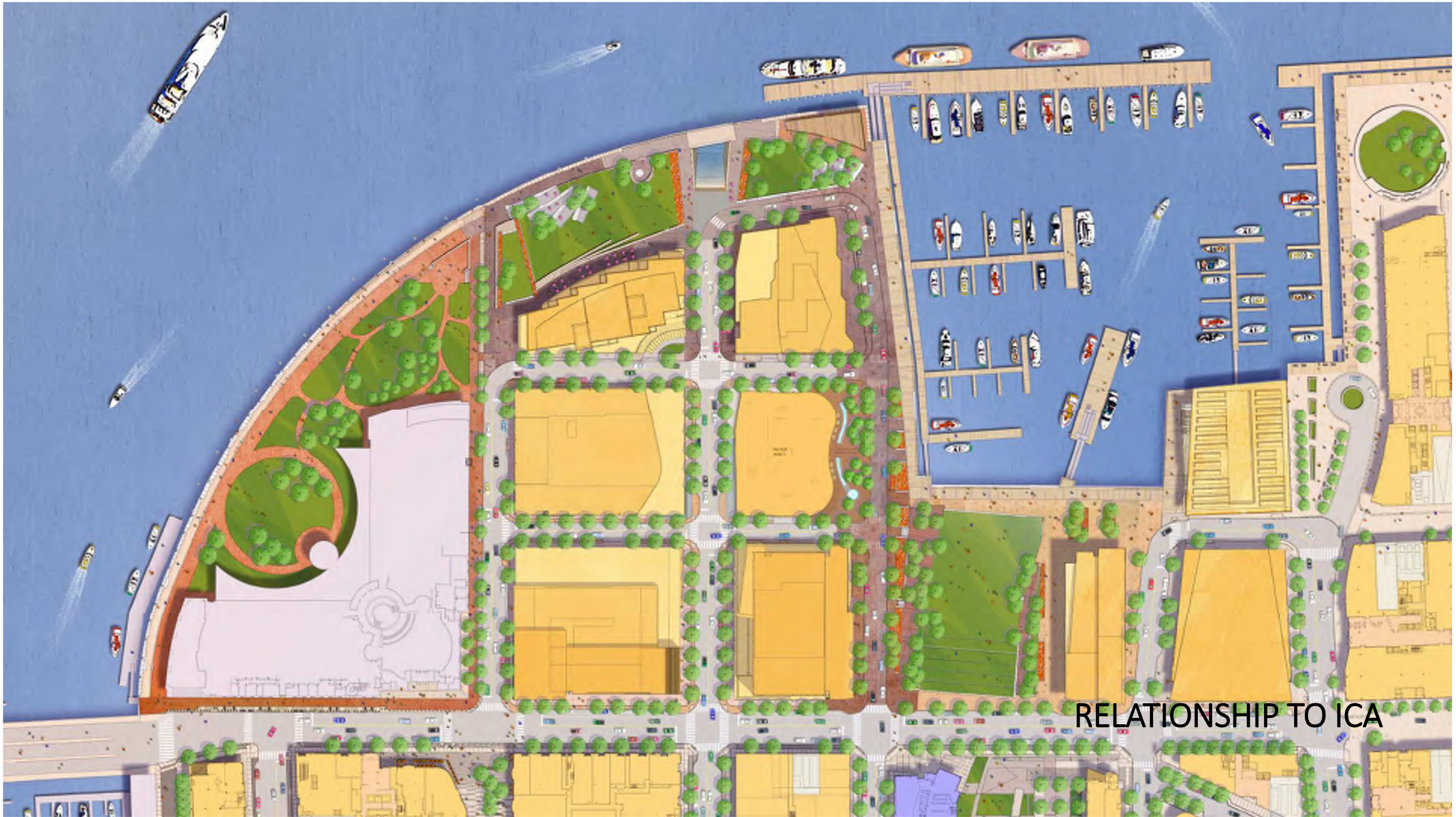




View From Fan Pier Boulevard - Lobby View



# Landscape



RELATIONSHIP TO ICA





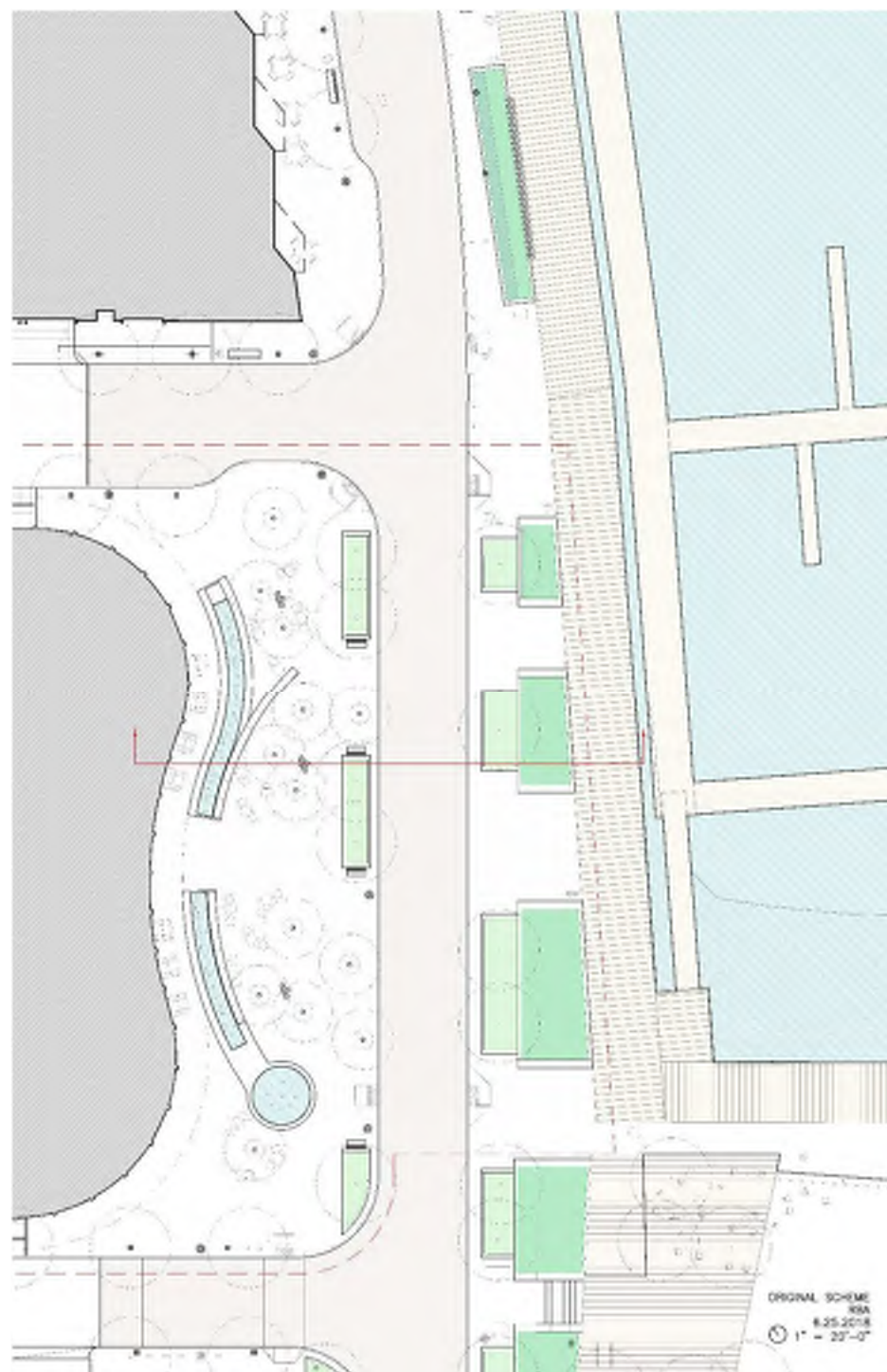












VIEWS TO MARINA / HARBOR

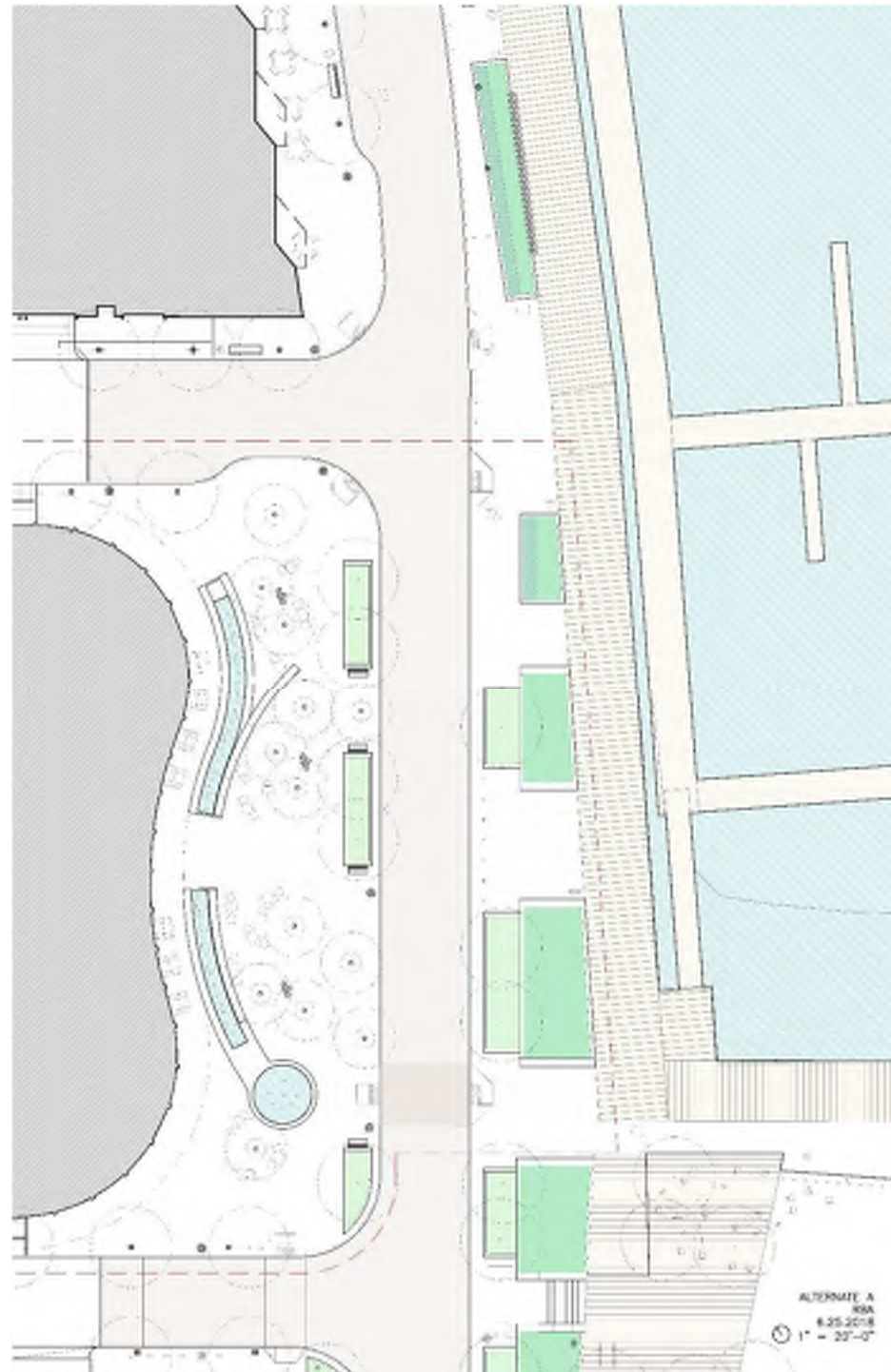












ALTERNATE A



STREETS, SIDEWALKS, CROSSWALKS



