

DID YOU KNOW THAT THE CITY OF BOSTON IS CONDUCTING THE FIRST-EVER COMMUNITY PLAN IN ALL OF ALLSTON-BRIGHTON?

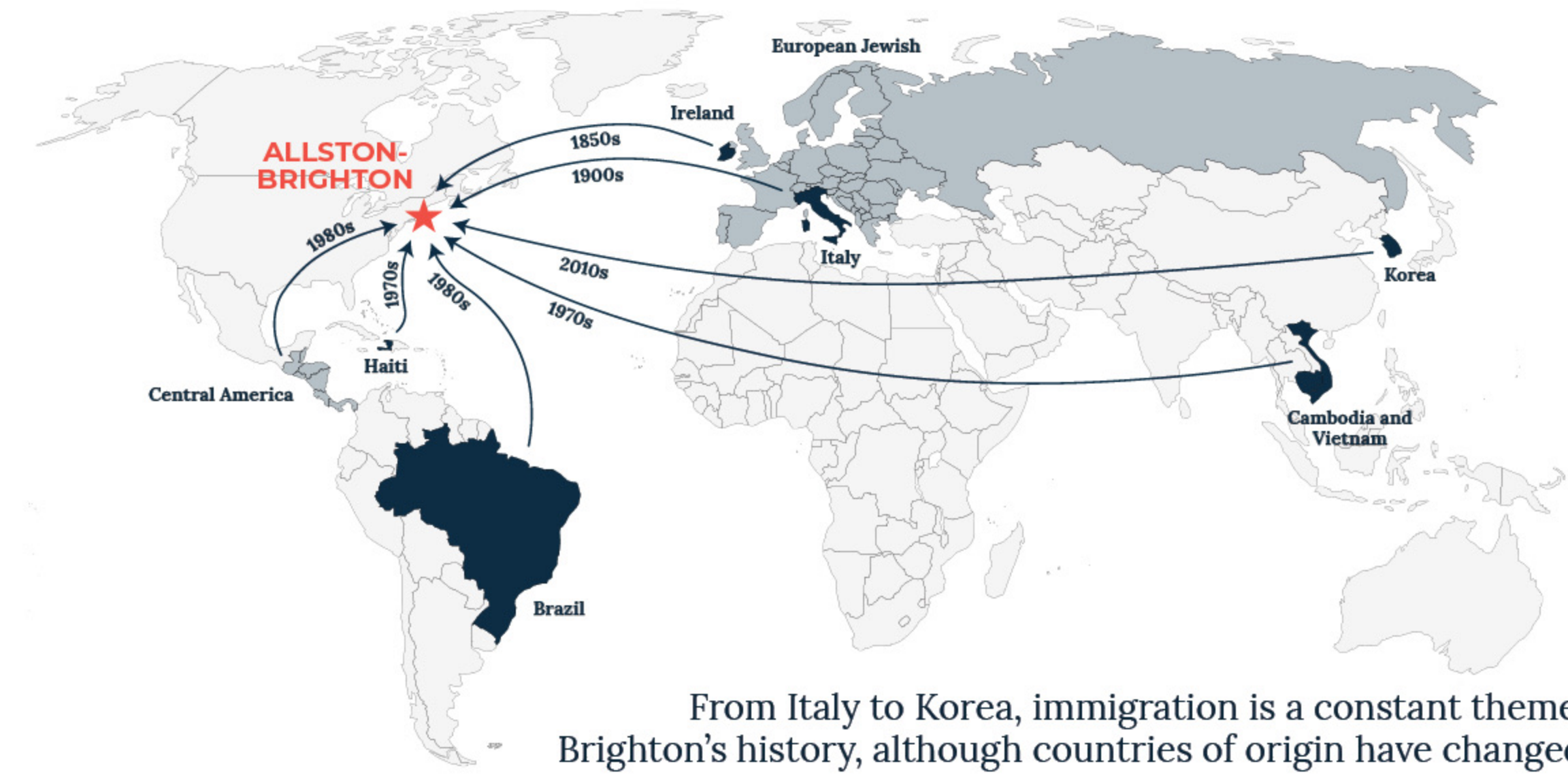
The **Allston-Brighton Community Plan (ABCP)** will guide future development for all parts of the community. The Plan will be developed until early 2026, and will make recommendations for the next 3-10 years.

The ABCP includes goals, recommendations, and implementation strategies that answer:

- > **What kinds of changes are desired by residents, businesses, large institutions, and others who may be impacted by future development in the community?**
- > **How will those changes be achieved?**

NEIGHBORHOOD STORIES OF CHANGE...

Allston-Brighton has long been a landing place for immigrants and young people

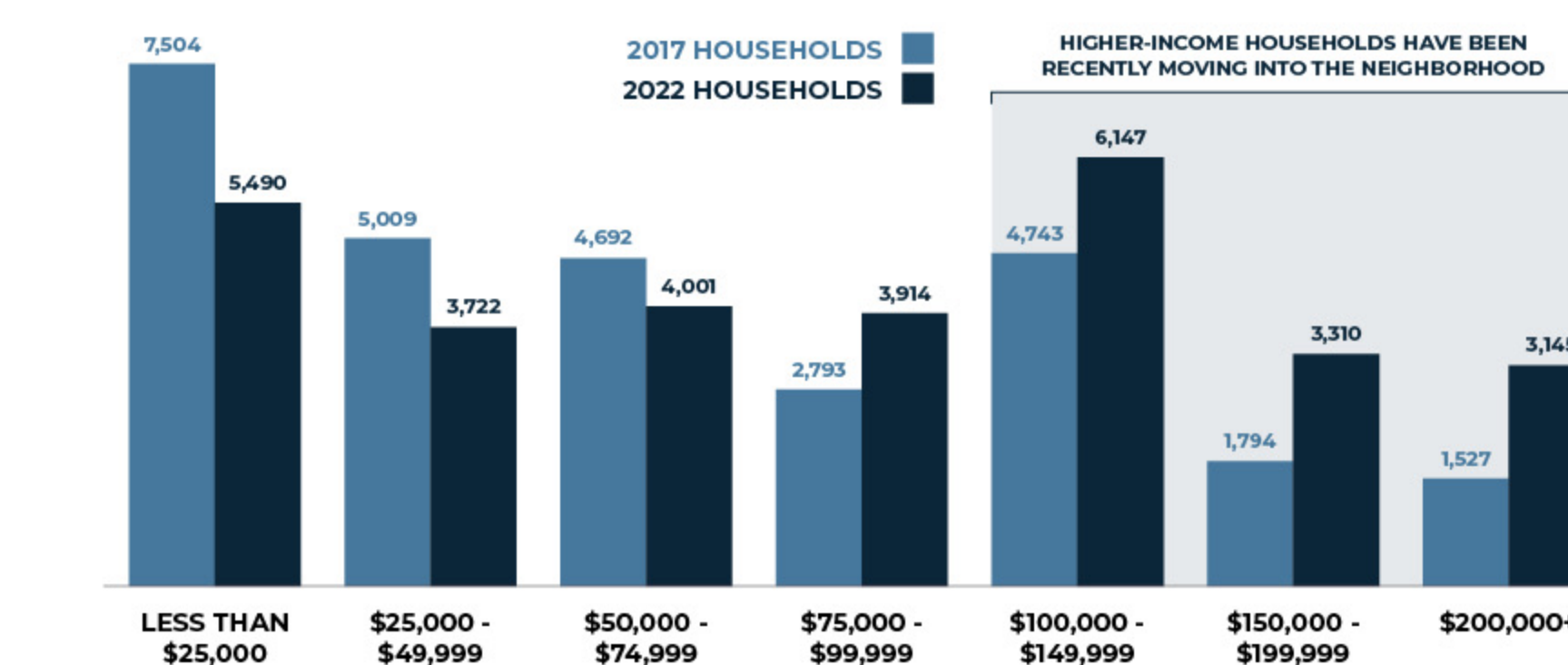


From Italy to Korea, immigration is a constant theme in Allston-Brighton's history, although countries of origin have changed over time.

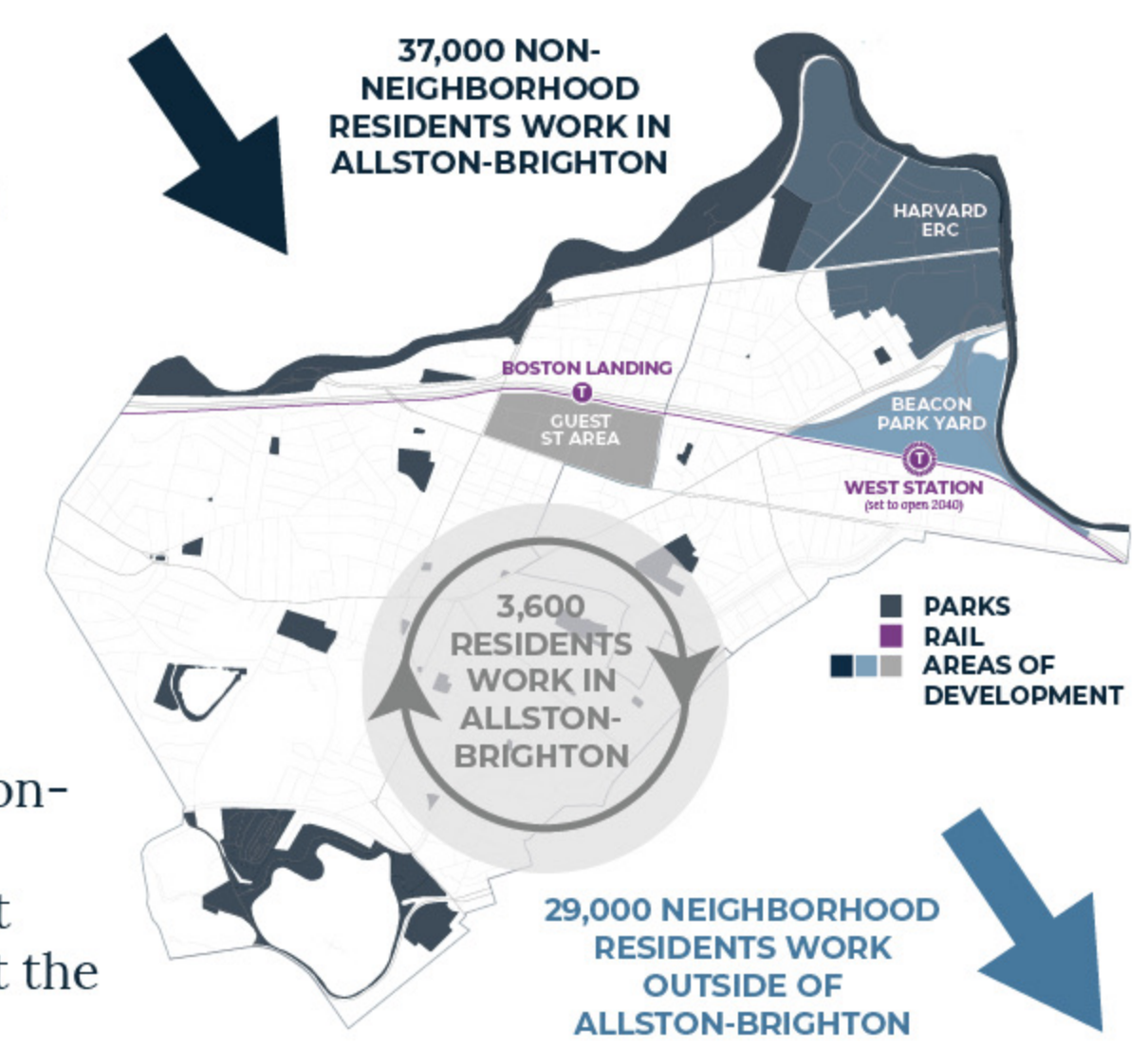
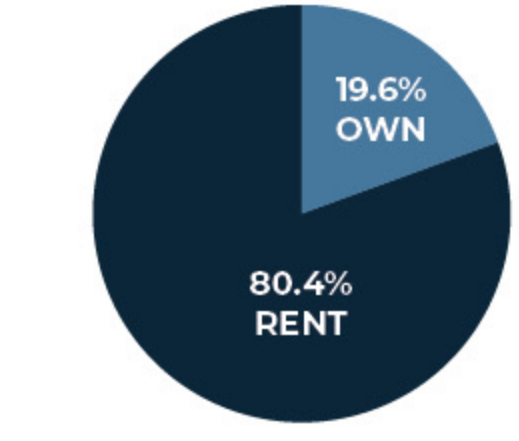


New development and transportation hubs are creating waves of change

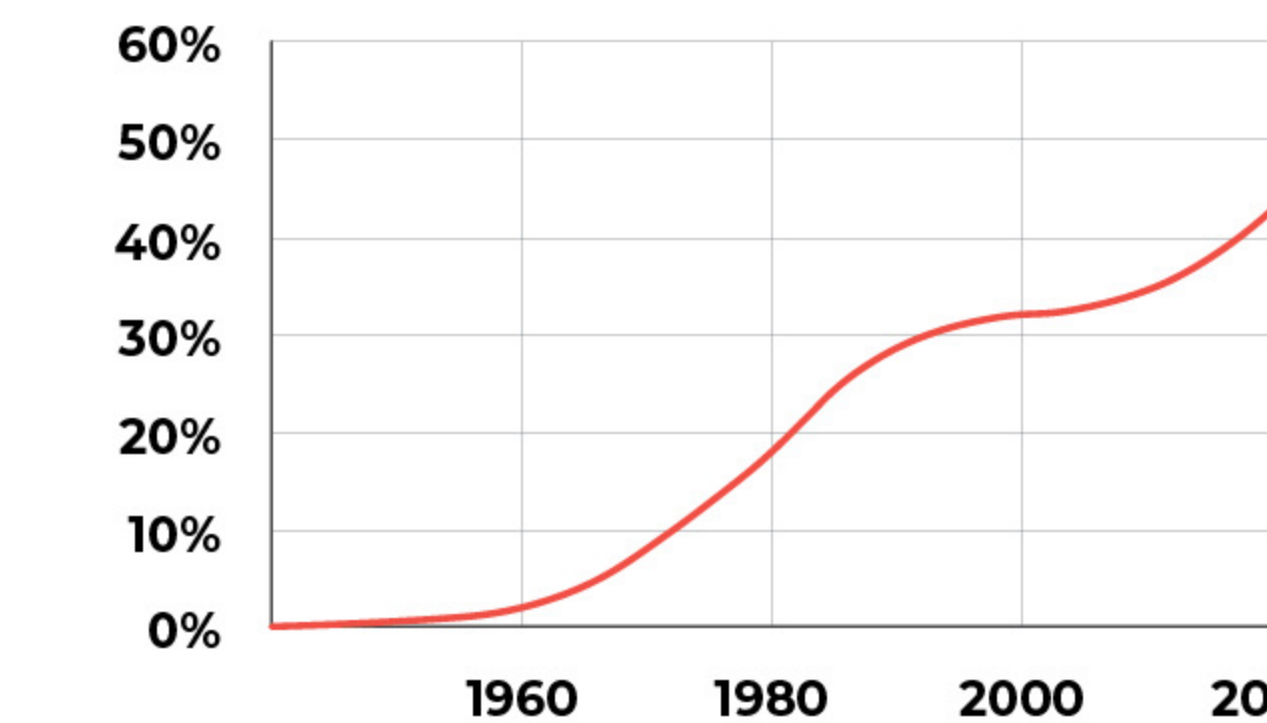
Based on data from the US Census Bureau (2021), Redfin Market Data and ACS Five Year Estimates



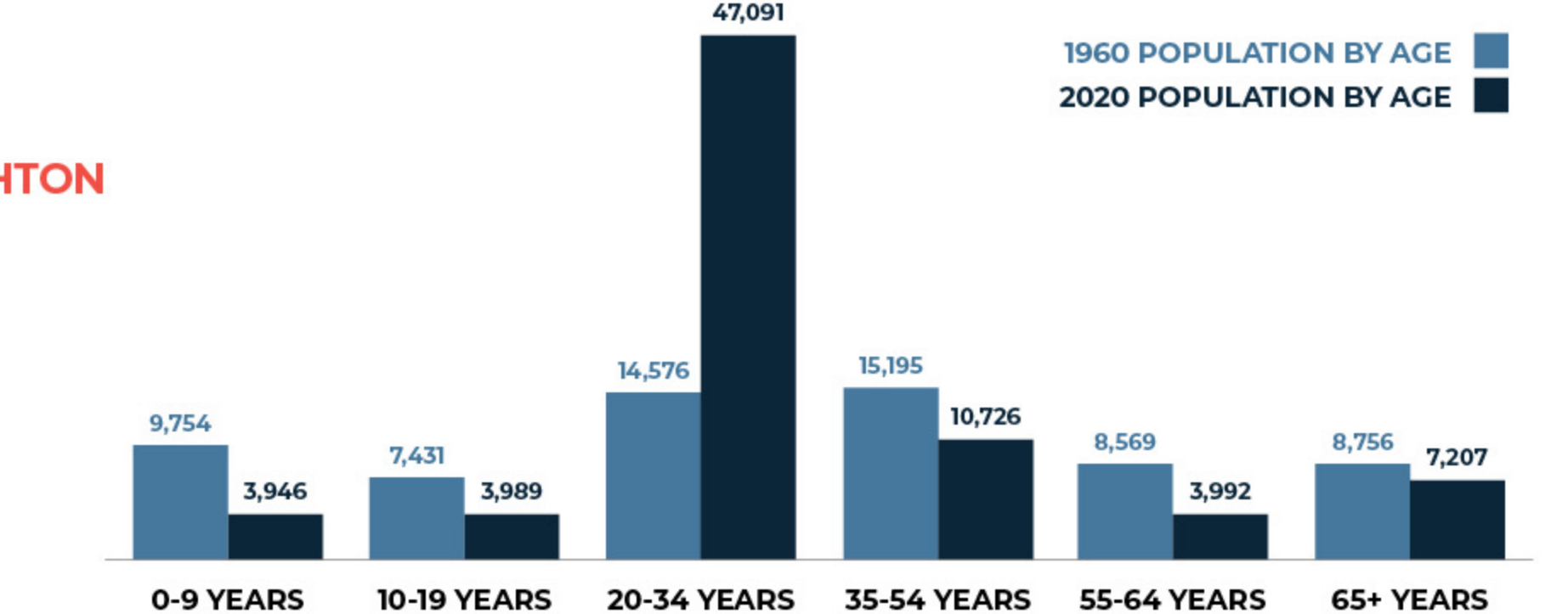
Higher income households have moved into Allston-Brighton in the last few years. The average age of new residents has increased from 20-24 to 22-26 year olds.



Boston Landing made Allston-Brighton more accessible to the city and region. West Station will further connect the neighborhood regionally.



The percentage of non-white residents in Allston-Brighton has been increasing since the 1960s.



After many middle-class white residents moved to the suburbs in the 1960s, students moved in. Today, Allston-Brighton is 76% young adults (under age 34).

What we have heard already

In 2023, residents from across the neighborhood shared their priorities through the Allston-Brighton Needs Assessment (BPDA) and the Healthy Neighborhoods Initiative (Allston-Brighton Health Collaborative). **Neighborhood priorities include...**

DIVERSITY + CULTURAL EXCHANGE

DIVERSITY IN PEOPLE AND PLACES
PLACES TO EXCHANGE IDEAS (LIKE PARKS AND CAFES)
FOOD, MUSIC, AND ART
STRONG NEIGHBORHOOD ORGANIZATIONS

A HEALTHY NEIGHBORHOOD

HEALTHY FOOD ACCESS
AFFORDABLE AND QUALITY HOUSING
OPEN SPACE AND PARKS
HEALTHCARE ACCESS

CONNECTED COMMUNITIES

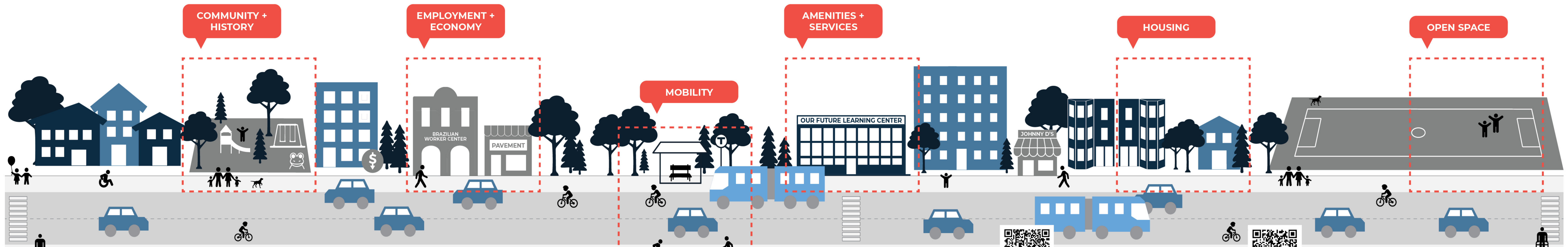
RELIABLE TRANSIT
ACCESS TO EMPLOYMENT
PARTNERSHIPS WITH INSTITUTIONS

WHAT PRIORITY MATTERS MOST TO YOU AND WHY? ADD A STICKY NOTE!

WHAT BROUGHT YOU TO ALLSTON-BRIGHTON? ADD A STICKY NOTE!

OPEN THE WINDOWS BELOW TO LEARN ABOUT ALLSTON-BRIGHTON!

4.12 SQUARE MILES IN ALLSTON-BRIGHTON
76,951 PEOPLE LIVE IN ALLSTON-BRIGHTON
11.4% OF THE CITY'S POPULATION (2024)



Visit the project website by scanning the QR code to the right, or by visiting bit.ly/allston-brighton-community-plan. You can also email the team at abcommunityplan@boston.gov



Learn more about existing conditions in Allston-Brighton by scanning the QR code to the right, or by visiting bit.ly/ABCP-data-stories

