

KPMB ARCHITECTS

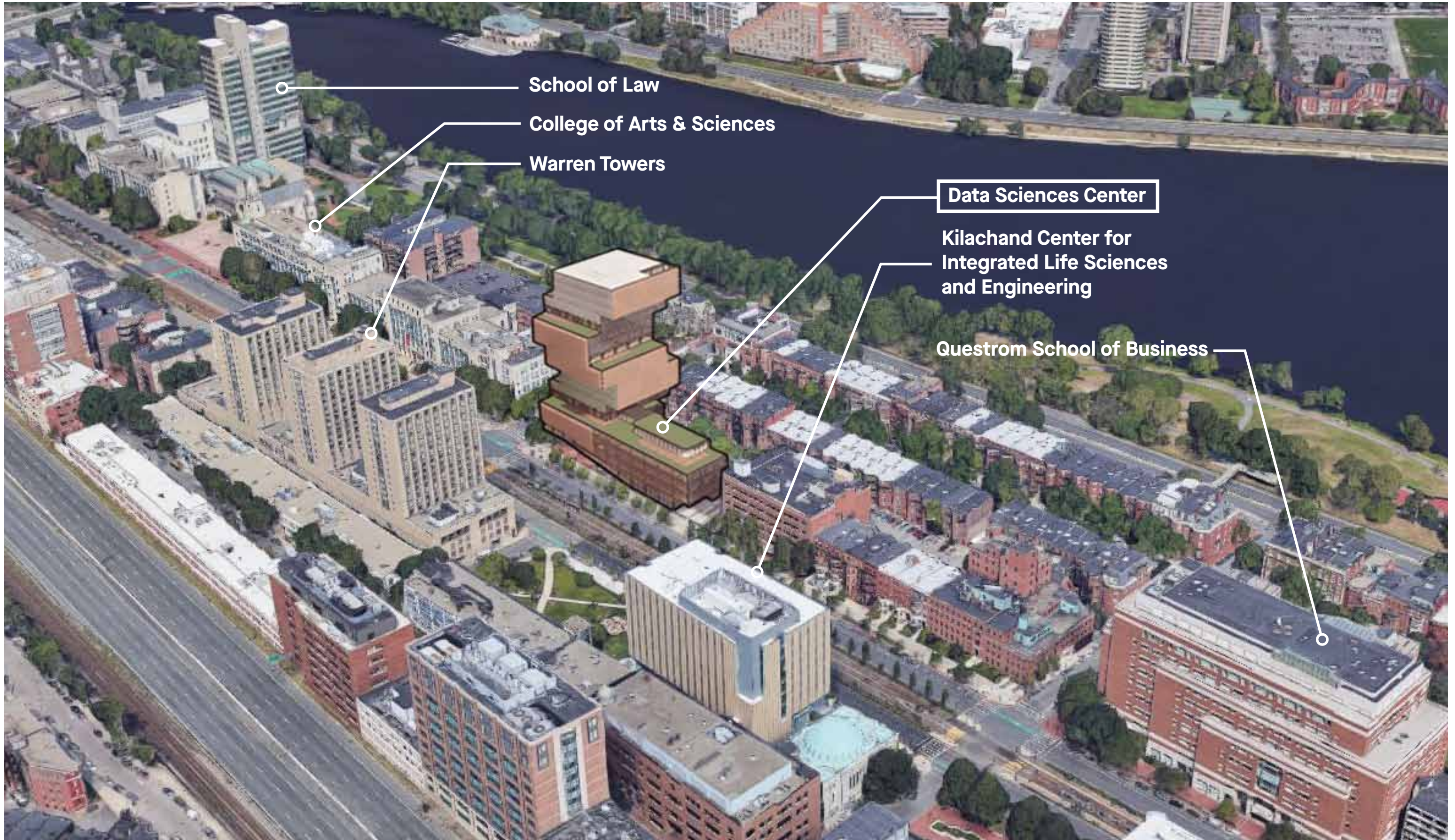
BOSTON CIVIC DESIGN COMMISSION HEARING



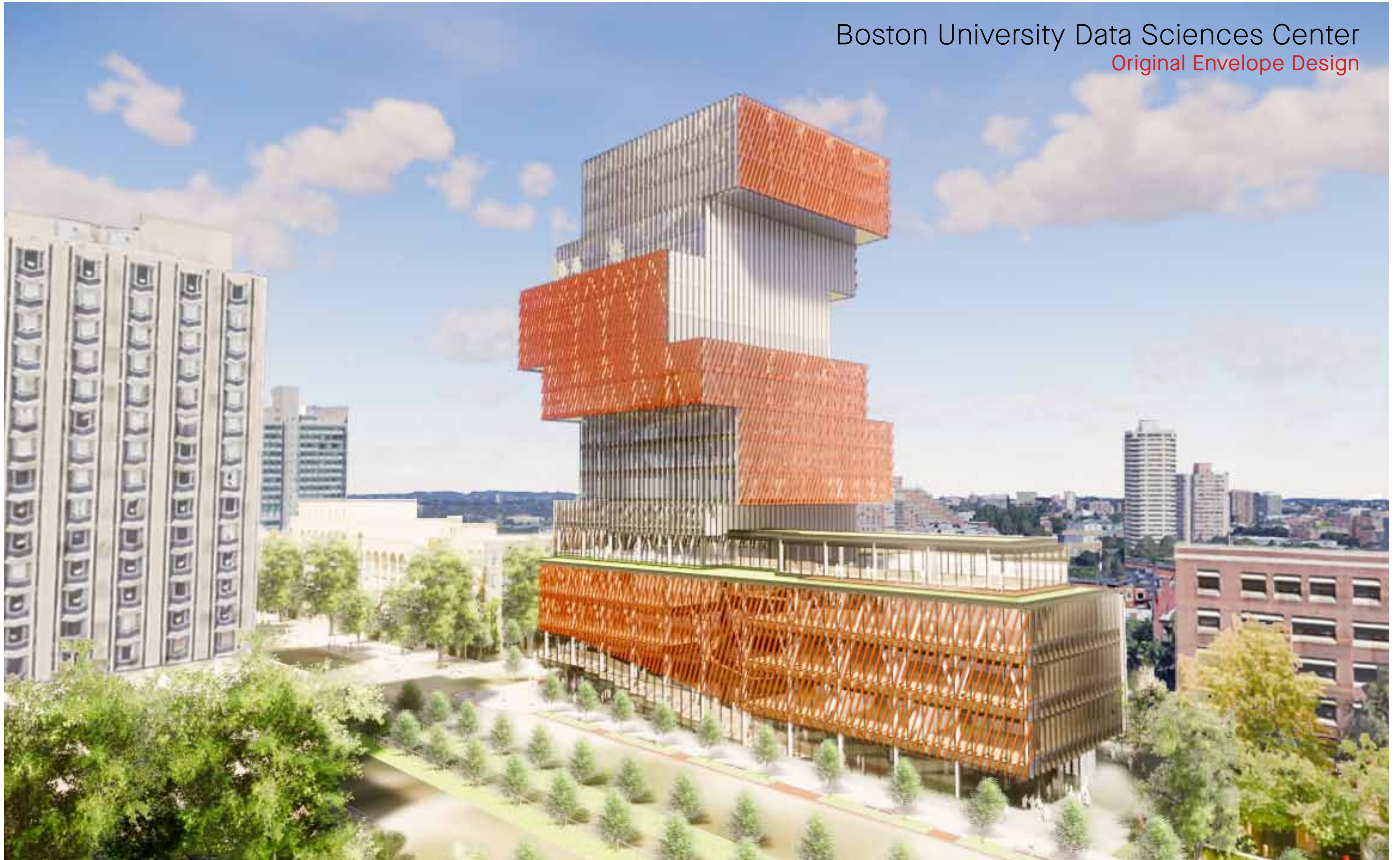
Boston University Data Sciences Center | 665 Commonwealth Ave

July 09, 2019

Project Context



Boston University Data Sciences Center
Original Envelope Design

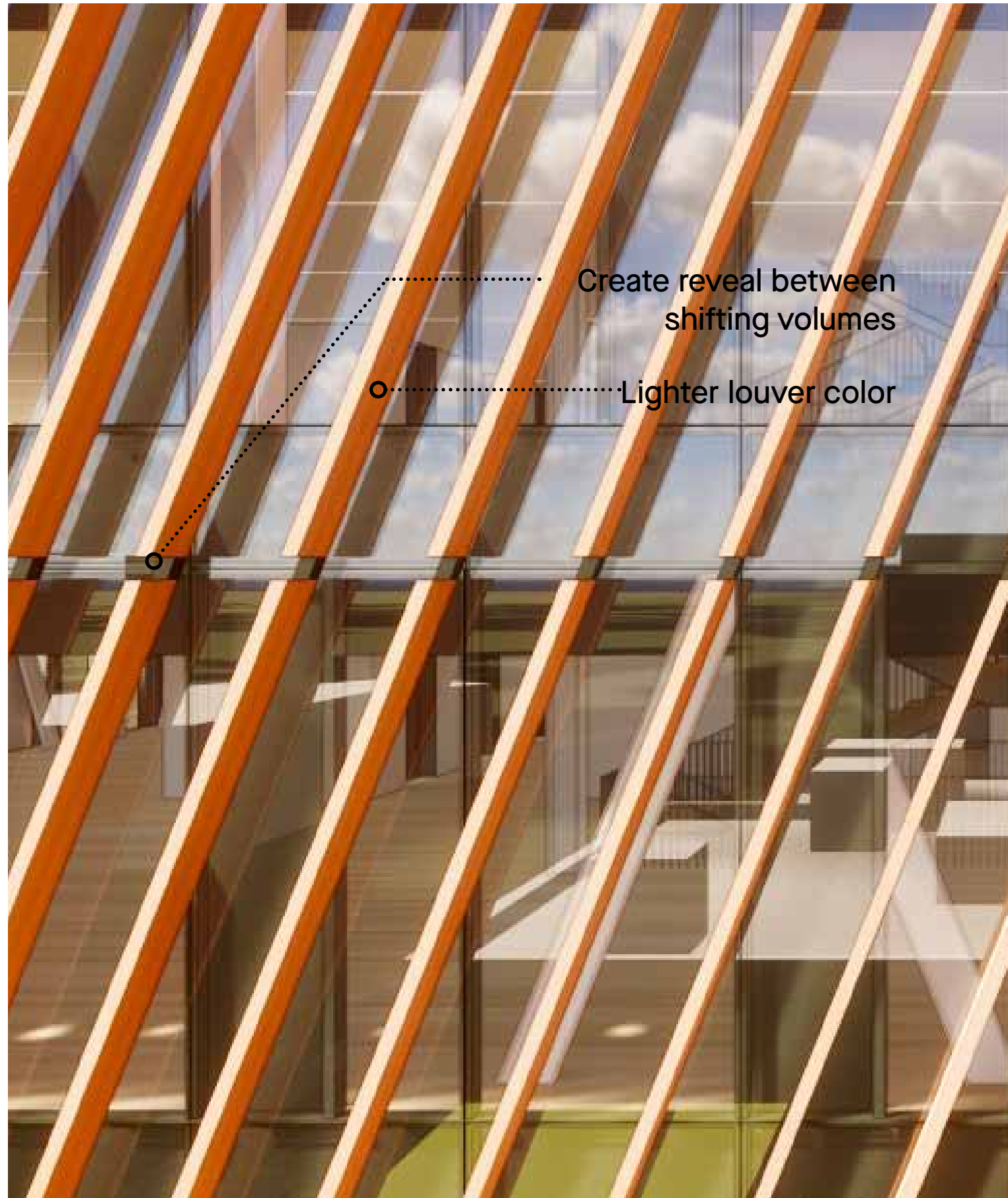


Boston University Data Sciences Center

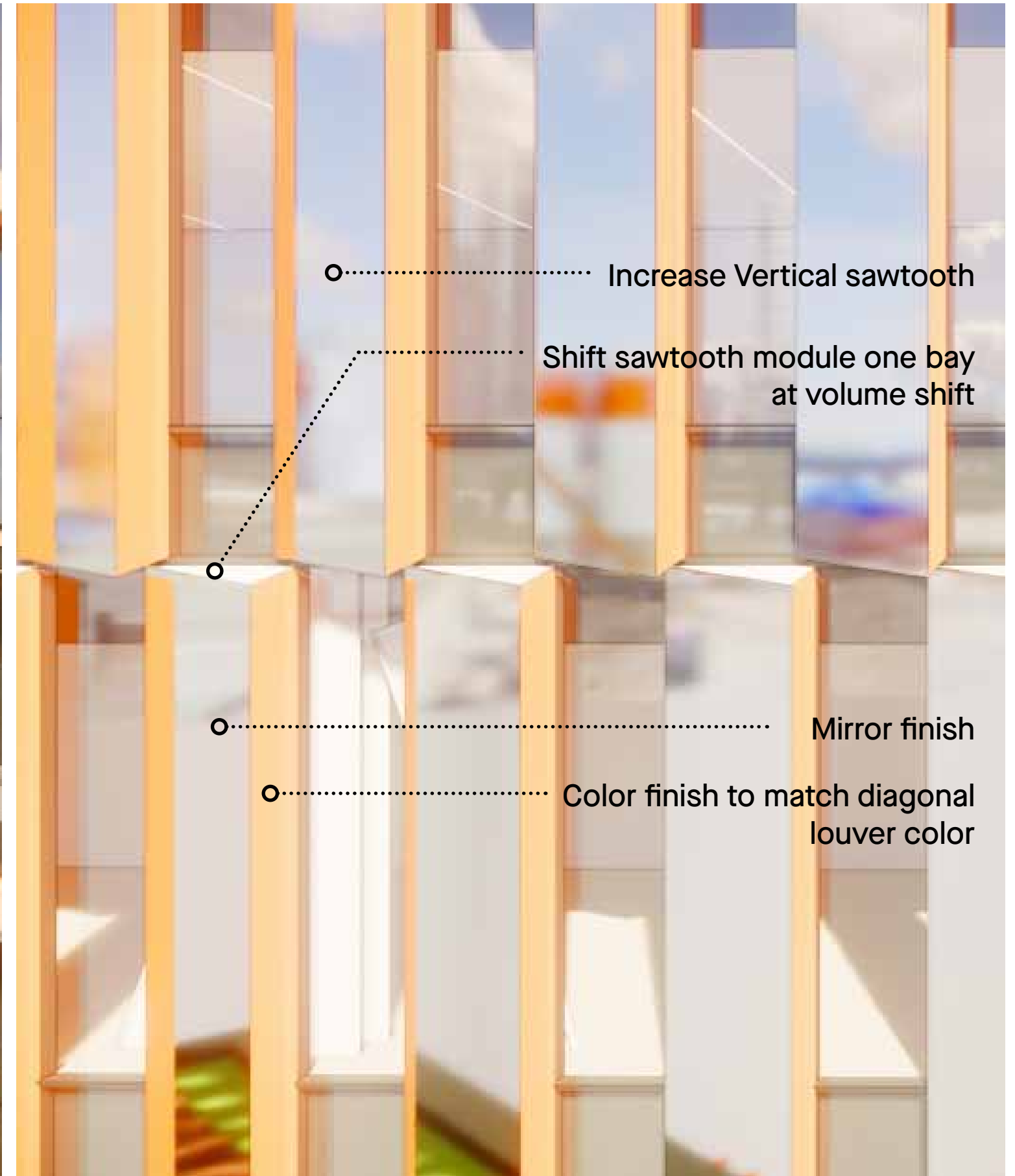
Revised Design

- Lighter louver color
- Building moved 11' North 8' East
- Entrances moved to Commonwealth Avenue
- Sloped assembly space to ground
 - Landscape elements added
- Increased louver spacing on North
 - Lightened top of building
- Louvers removed at enclosed terraces
- Increase Vertical sawtooth spacing
- Shift sawtooth module one bay at volume shift
- Sawtooth Color revision
- Open up façade at Terrace levels
- Create reveal between shifting volumes
 - Breaks up 2 and 3 story volumes
- Increased louver spacing at Podium
 - Improve visual porosity

Revised Diagonal Louver Façade Design



Revised Sawtooth Façade Design

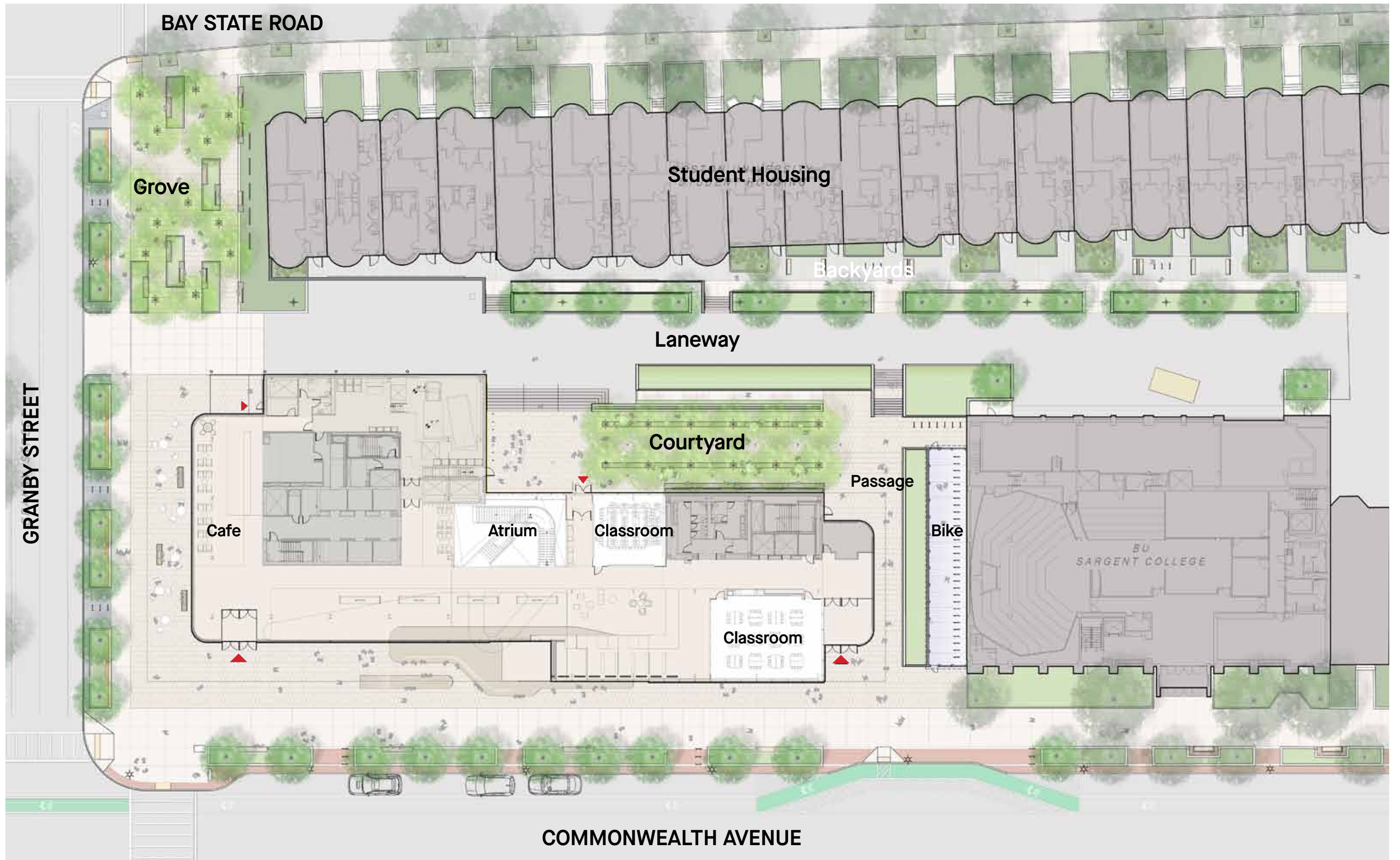


Commonwealth Avenue view west



Commonwealth Avenue Elevation





View from Commonwealth Ave. and Granby Street



Plaza





Commonwealth Avenue view looking East

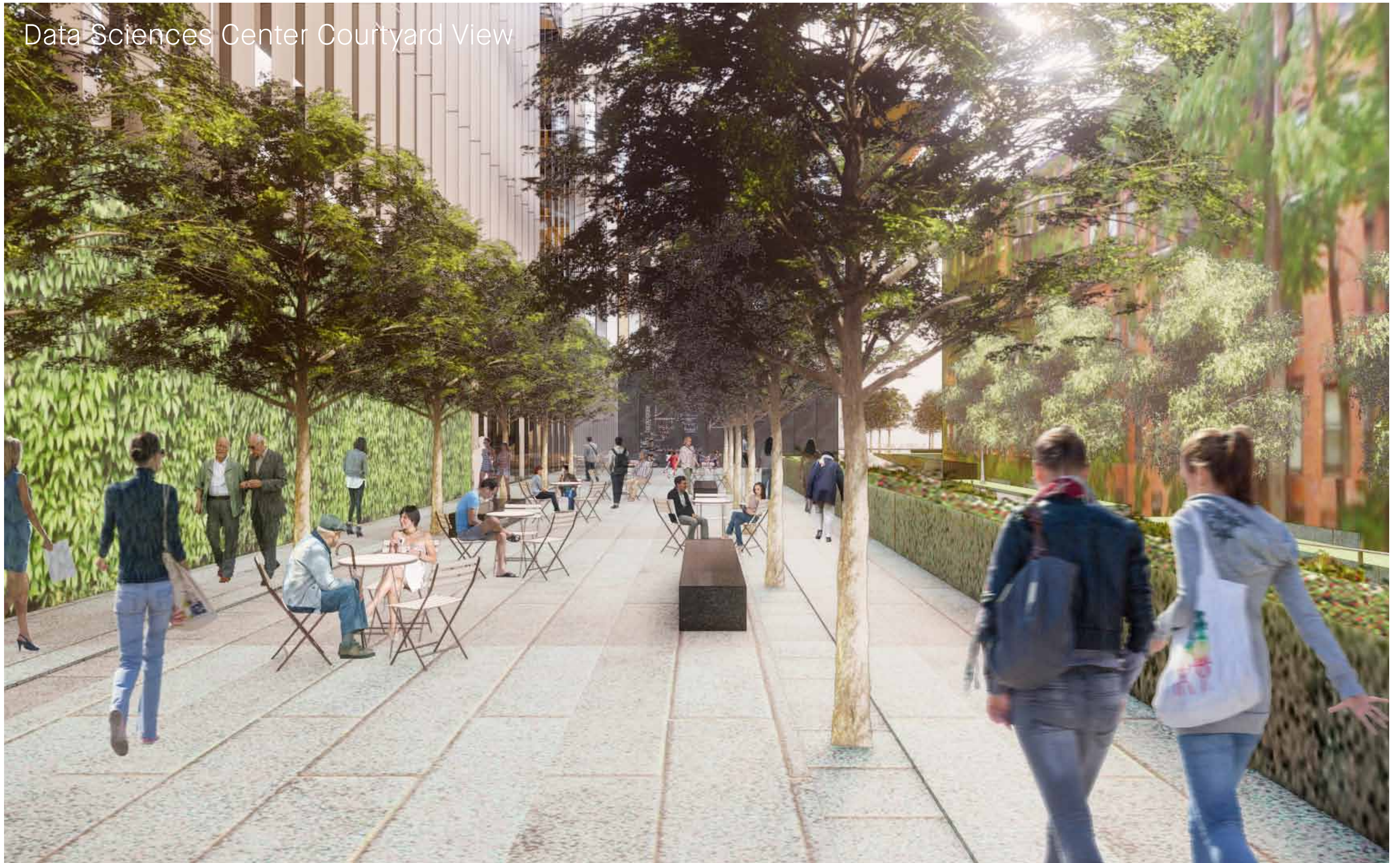
View North to District from Commonwealth Avenue



View at East Plaza along Commonwealth Avenue looking west to East entrance of Data Sciences Center



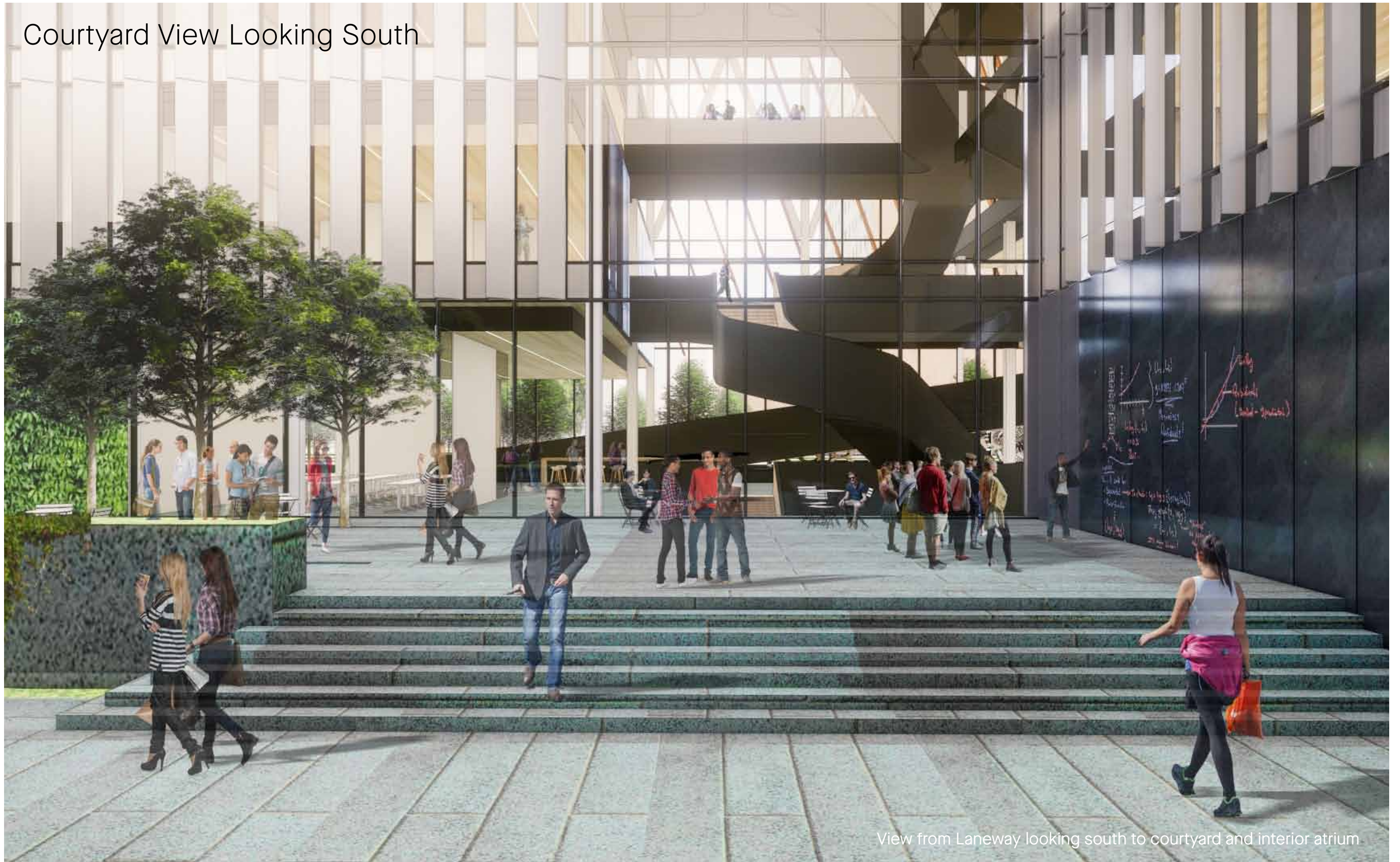
Data Sciences Center Courtyard View



View West from Laneway



Courtyard View Looking South



View from Laneway looking south to courtyard and interior atrium

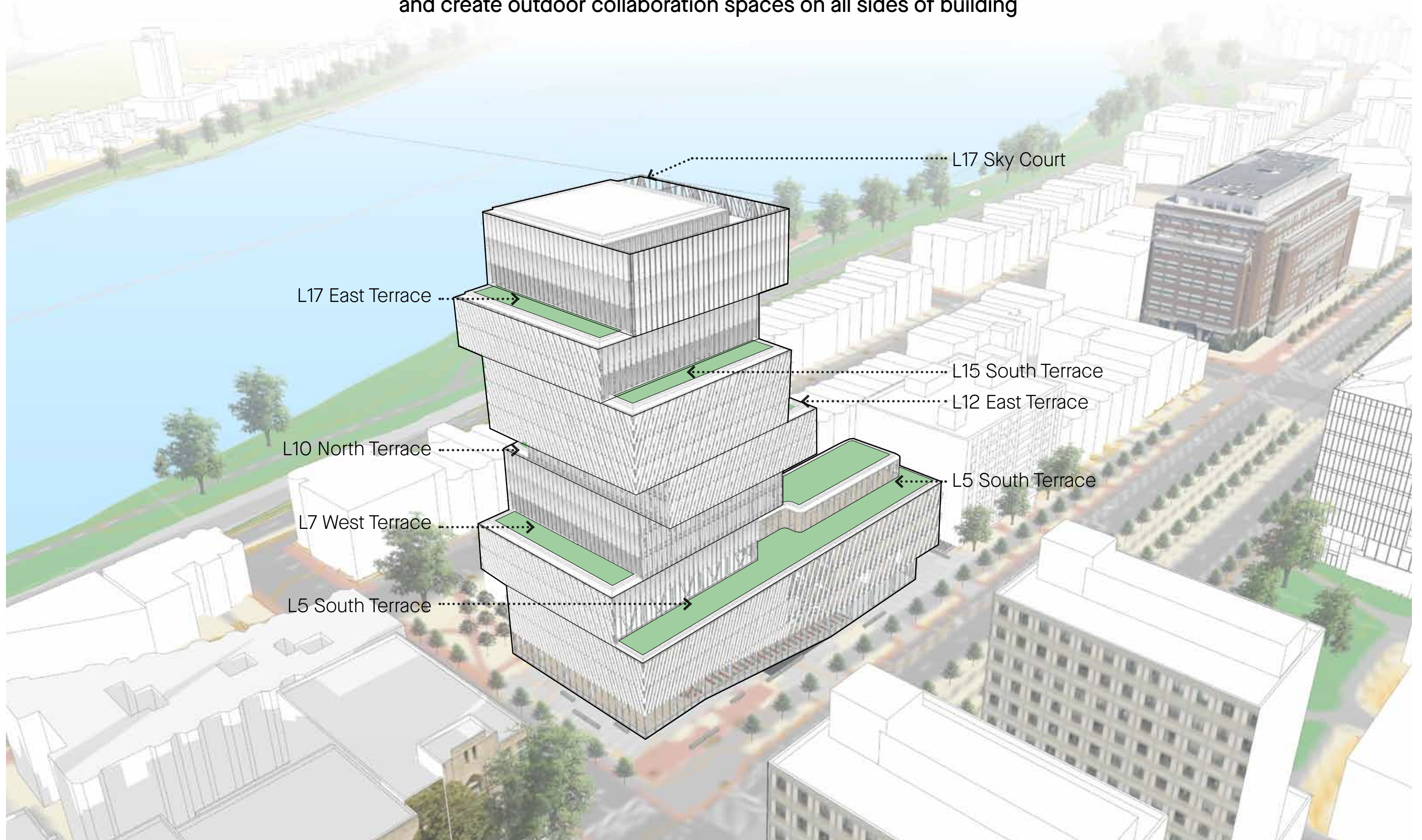
View of Open Space/Grove

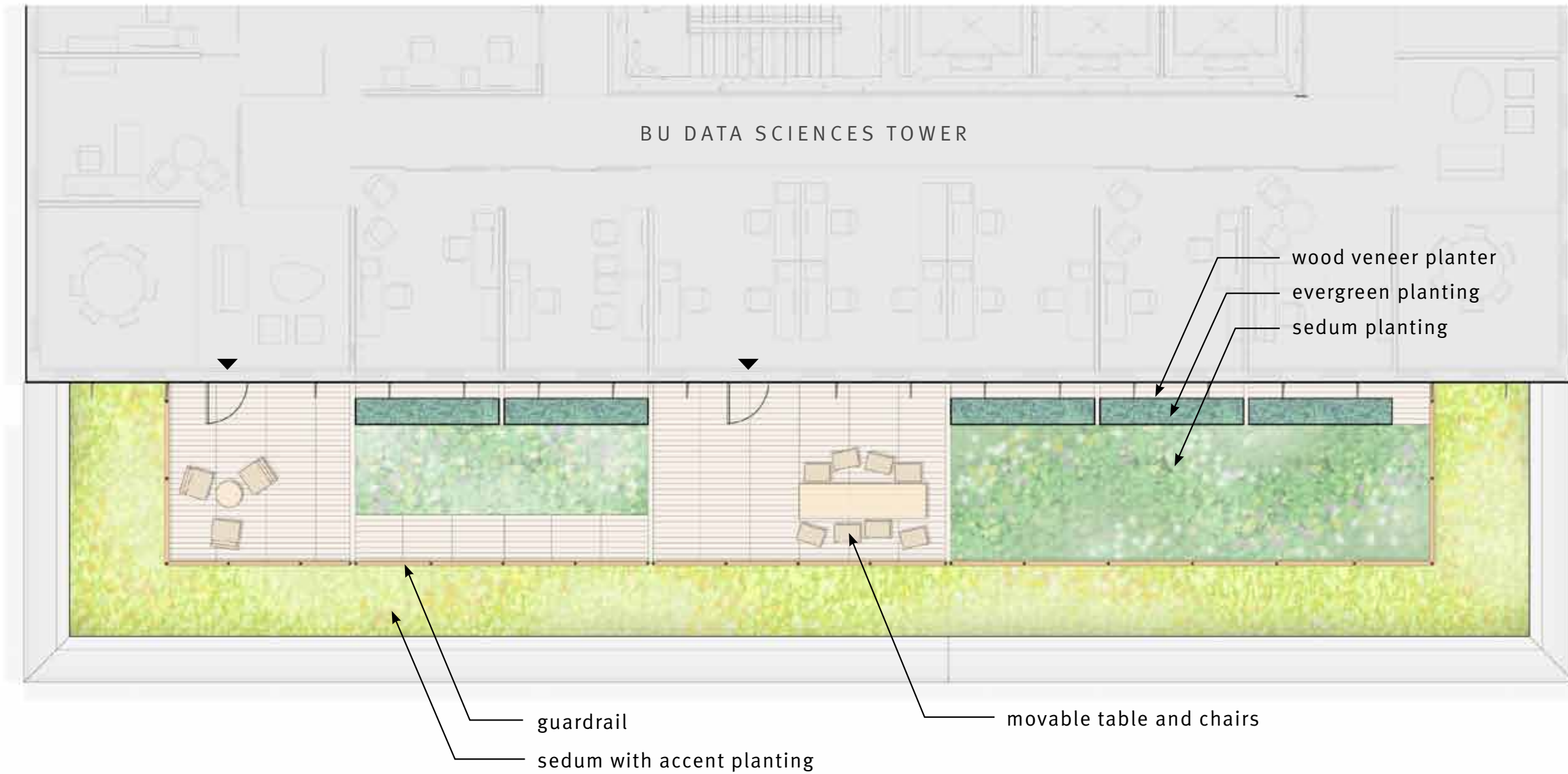


WHAT WE HEARD OUTSTANDING ISSUES

Roof Terrace Development

The shifted volumes break down the scale into vertical neighborhoods
and create outdoor collaboration spaces on all sides of building





L7 West Terrace



L10 North Terrace

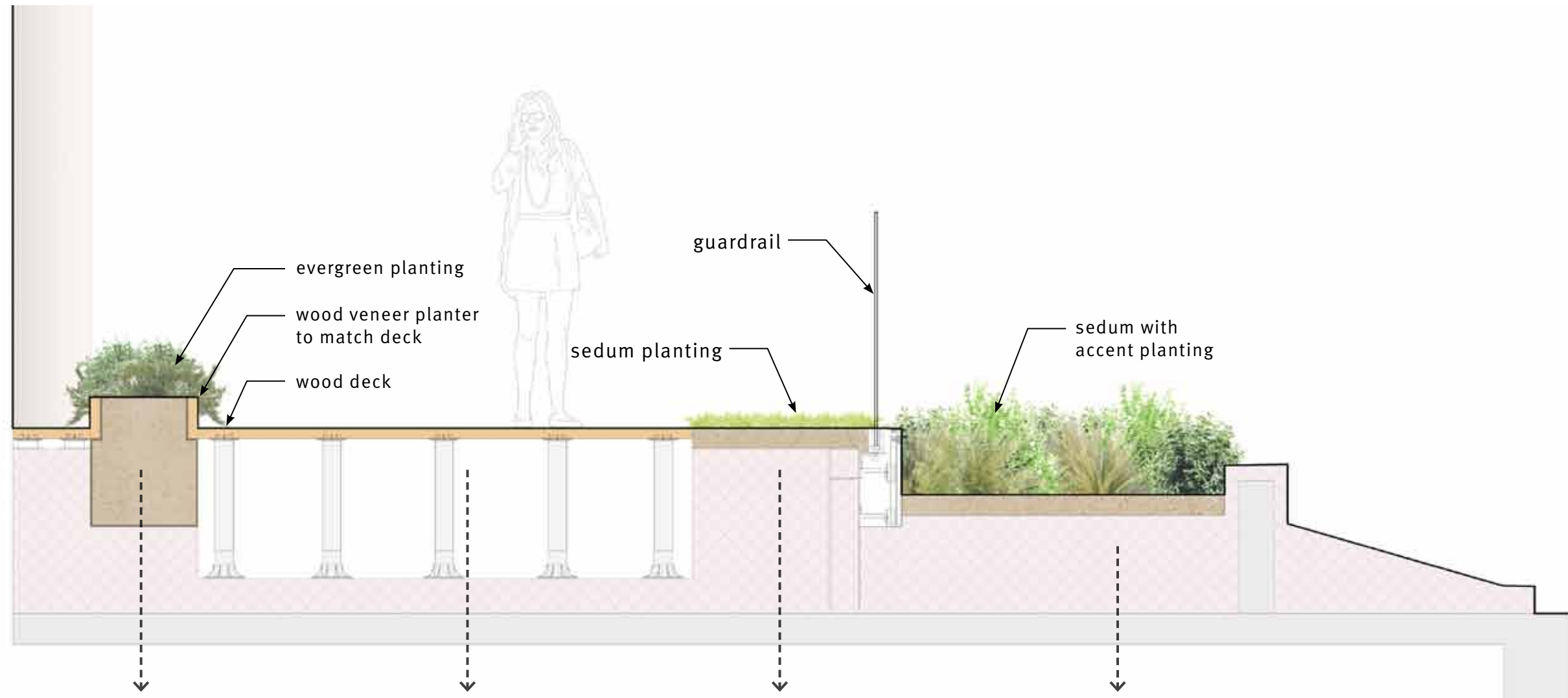


L12 East Terrace



L15 South Terrace





SITE SECTION 1 - KIT OF PARTS

BU DATA SCIENCES TOWER ROOF TERRACE

BOSTON CIVIC DESIGN COMMISSION HEARING 21

NORTH
↑
CHARLES RIVER



Sedum Mix



Sedum Mix



Phedimus takesimense



Heuchera villosa



Aquilegia canadensis



Sedum Mix



Koeleria macrantha



Coreopsis lanceolata



Rudbeckia hirta



Sedum Mix



Gaillardia pulchella



Dianthus carthusianorum



Bouteloua curtipendula



Penstemon hirsutus



Allium cernuum



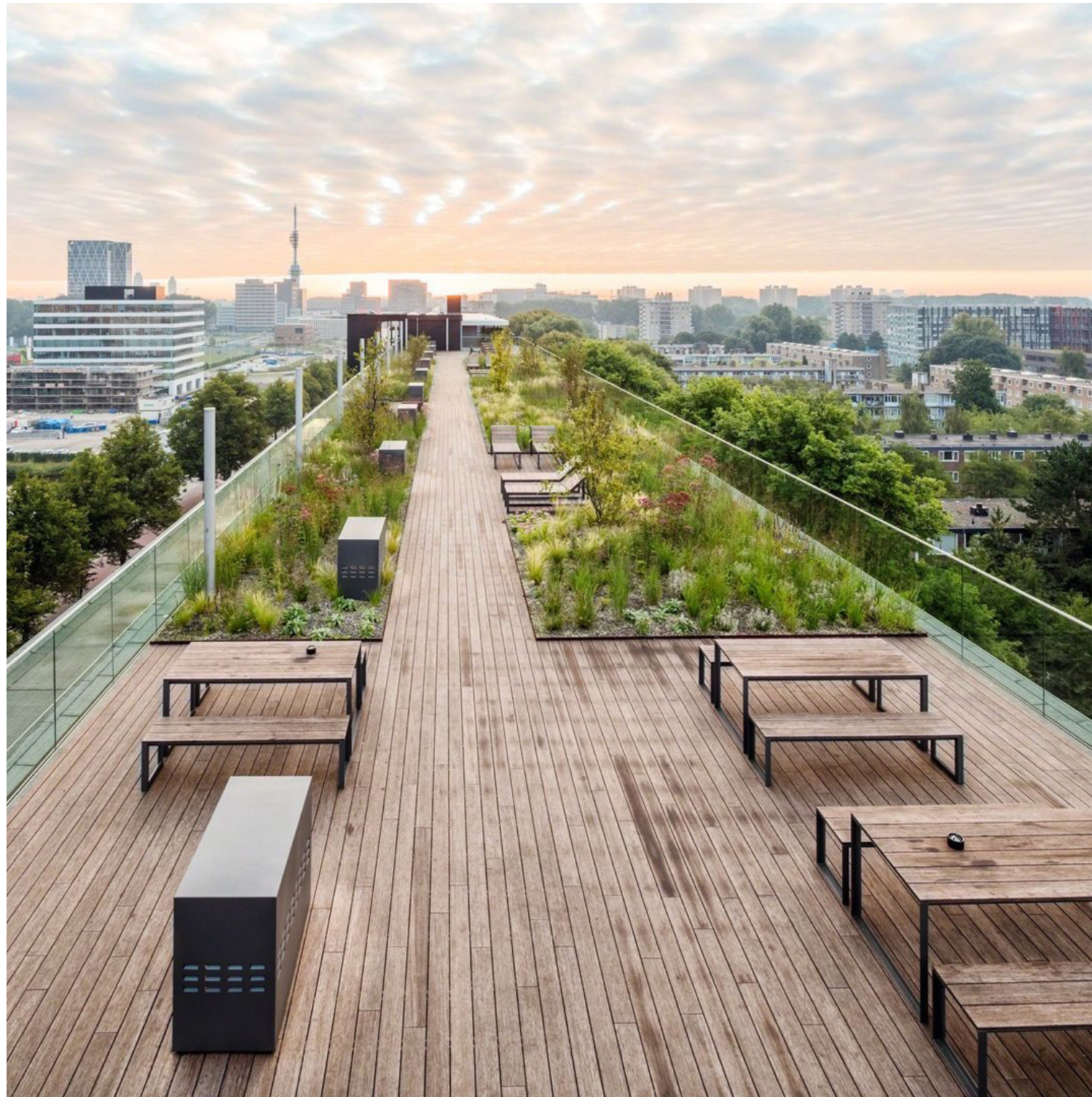
Monarda punctata

WEST
←
BU CAMPUS

EAST
→
BOSTON

SOUTH
↓

PLANT MATRIX



PRECEDENTS

BU DATA SCIENCES TOWER ROOF TERRACE
scale: nts
07.02.2019 RBA



THANK YOU