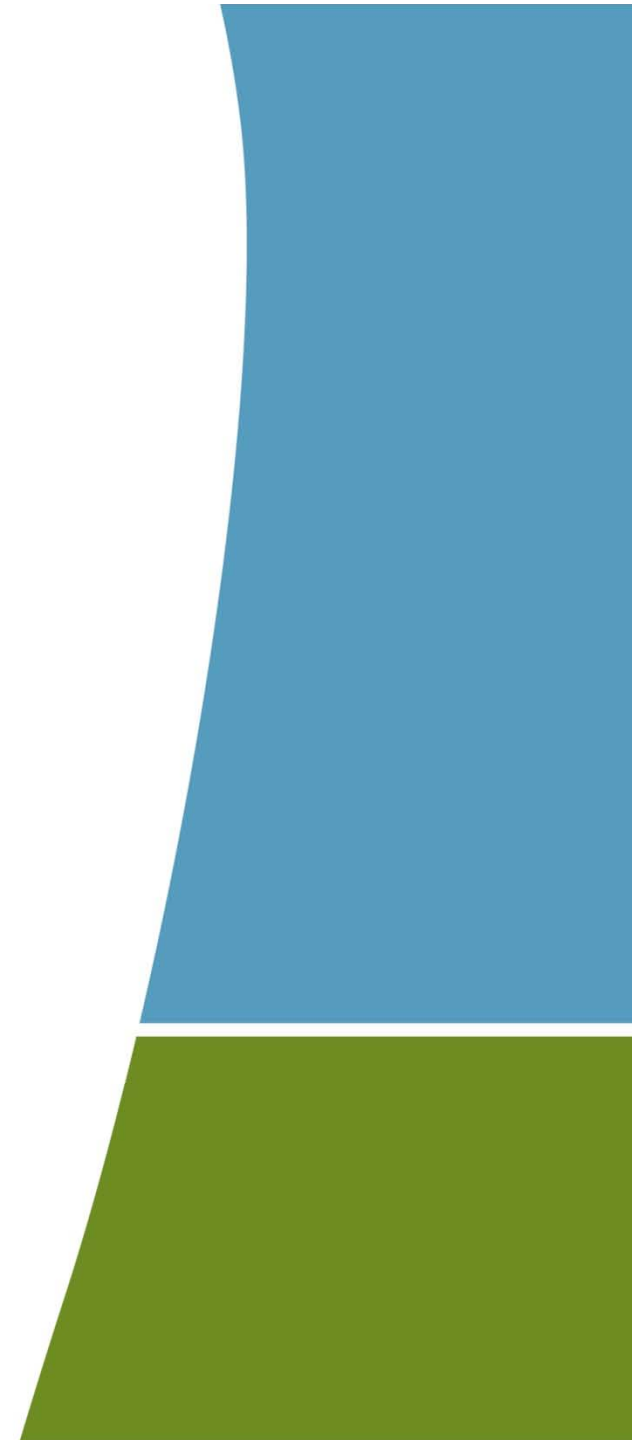


Carousel Park

Project Materials for BCDC

January 8, 2013



Carousel Park Project

- WHAT:** An outdoor custom carousel designed for the Greenway fully integrated into a newly landscaped park setting distinguished by a grove of trees
- WHERE:** In the Wharf District Parks opposite Faneuil Hall Marketplace and Christopher Columbus Park. The Harbor Islands Pavilion is located to its south, and the Armenian Heritage Park to its north.
- HOW:** Conservancy raised funding from private donors then engaged a multi-disciplined design team:
- **Reed Hilderbrand:** Landscape Architecture
 - **Utile:** Urban Design & Architecture
 - **Patrick Cullina:** Urban Horticulture
 - **SGH:** Engineering
 - **Briggs Design:** Carousel Artist and Sculptor
 - **Carousels and Carvings:** Carousel Fabrication
 - **Commodore Builders:** General Contractor
 - **ValleyCrest:** Landscape Construction
- WHEN:** Target opening Labor Day Weekend 2013

The Conservancy engaged extensive public feedback and agency reviews during schematic and final design, and is currently value engineering the design; starting the permitting process and targeting early spring construction

Carousel Park



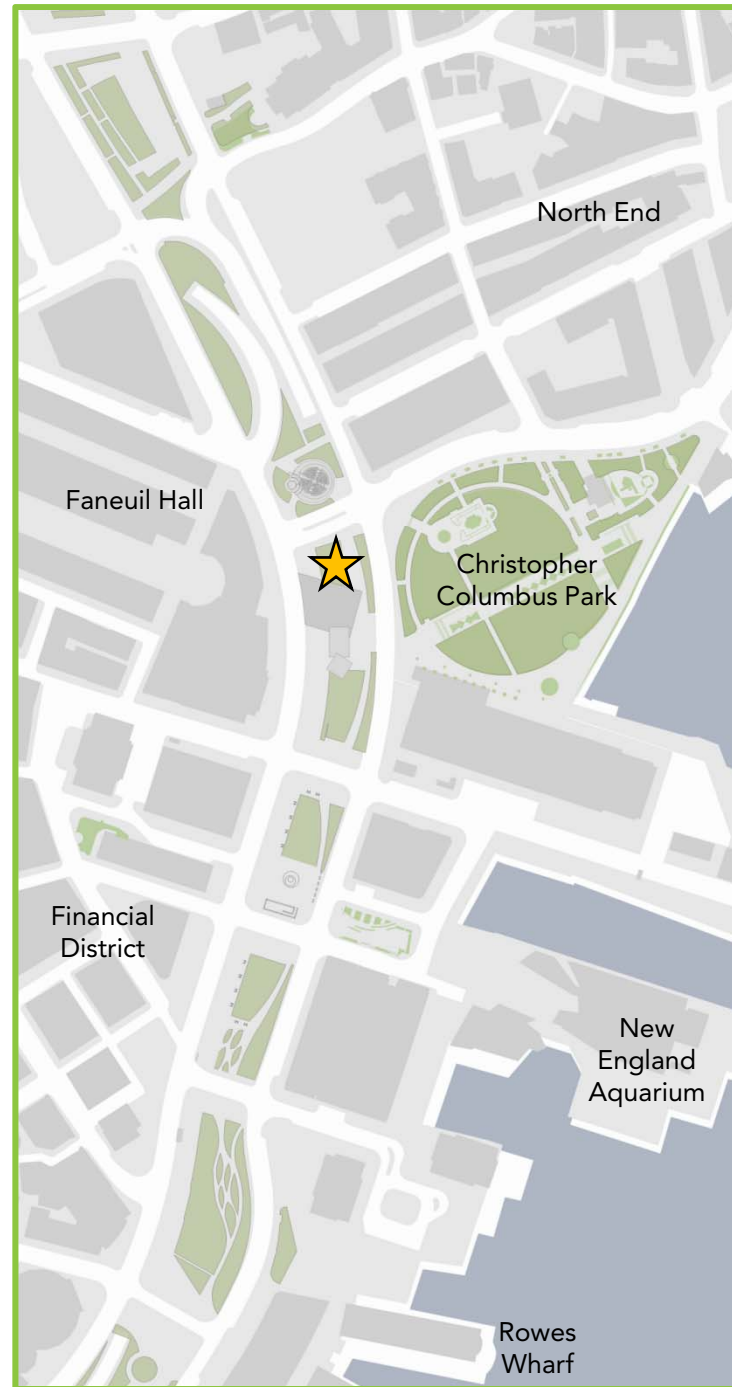
View Looking Northeast

Carousel Park

Location on the Greenway



View Looking North



Location Plan



Existing Conditions

Rental Carousel
Operating on Plaza



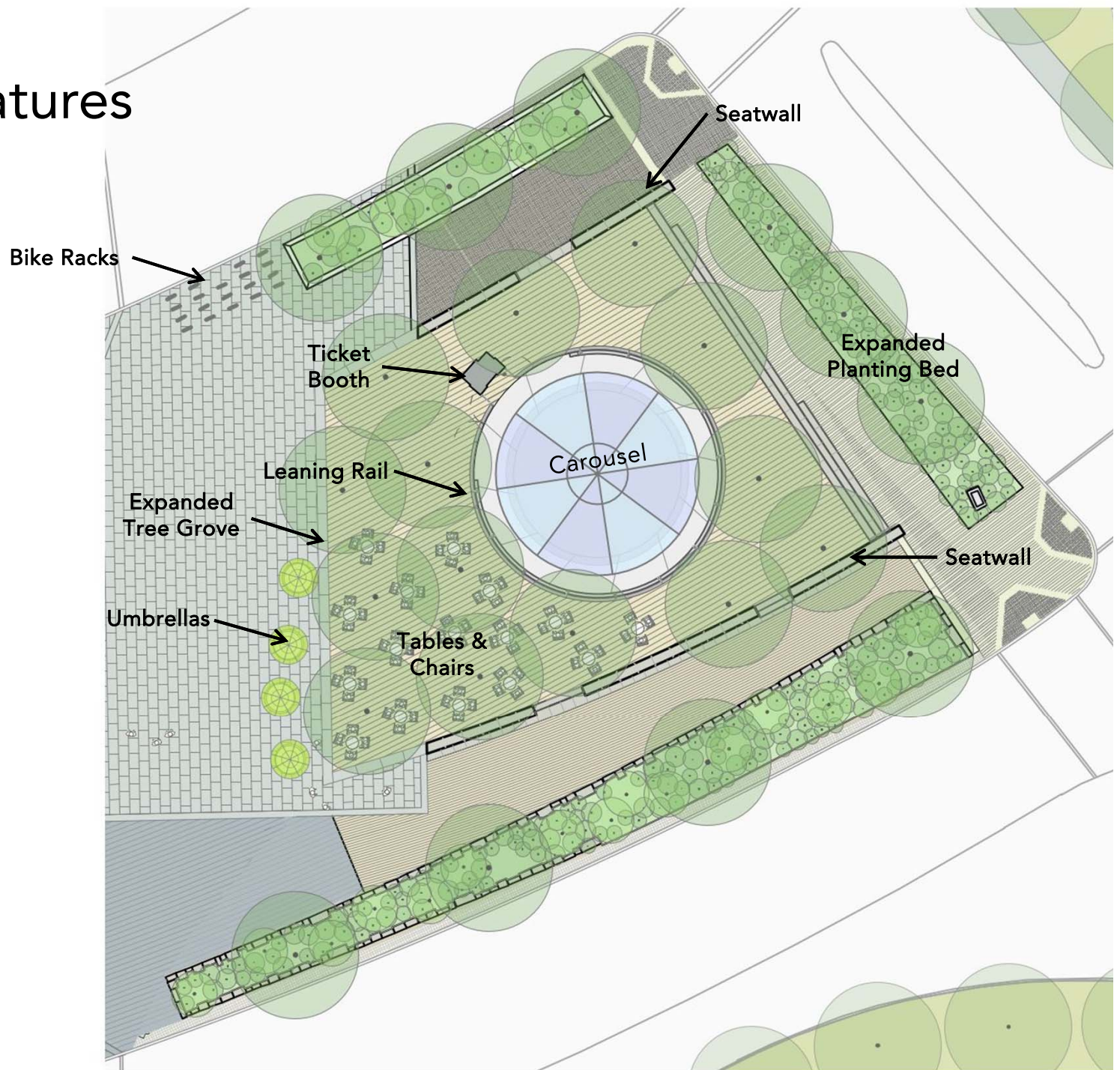
New Carousel Site Prepared
for Spring Construction



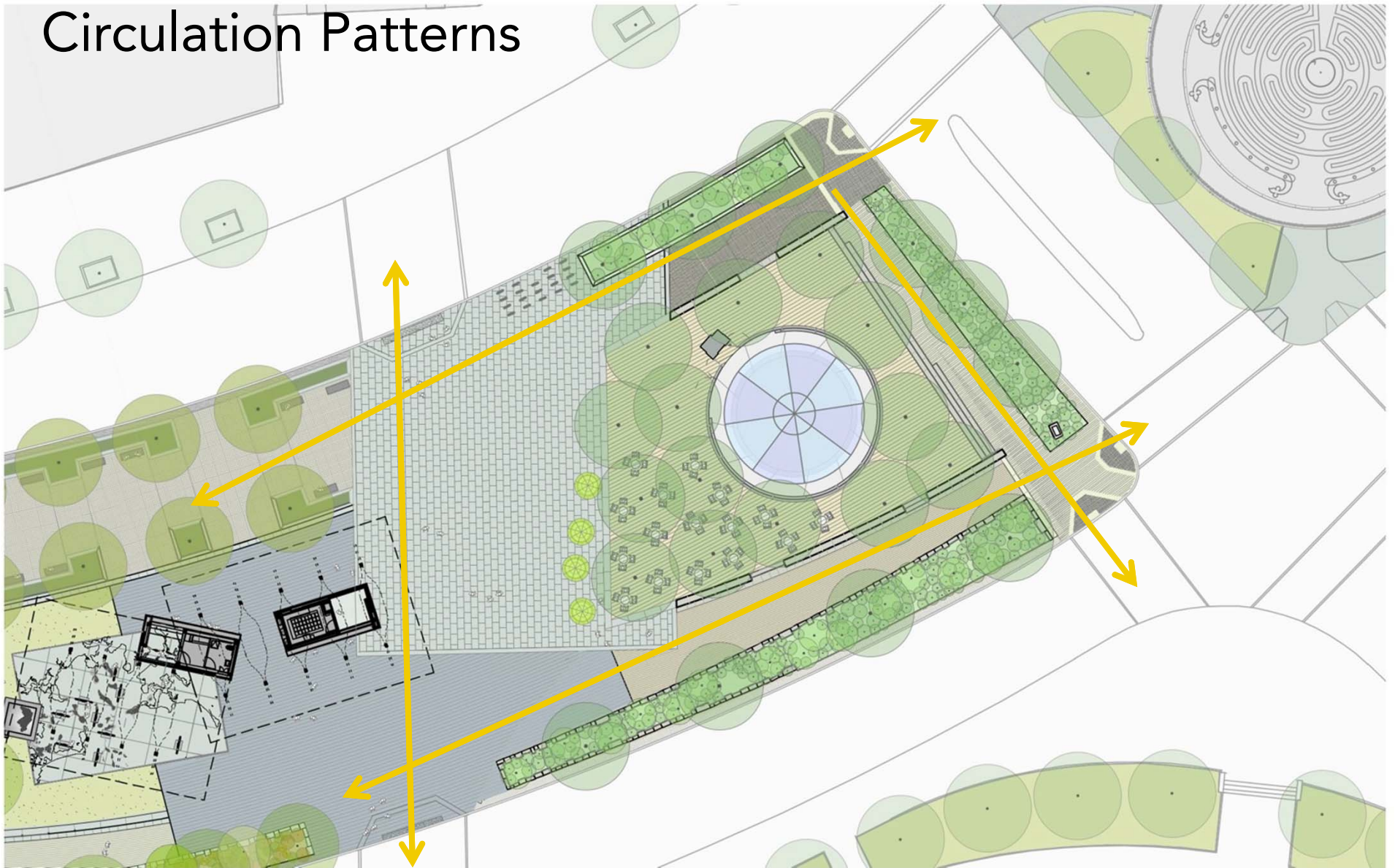
Carousel Park Plan with Expanded Landscape



Project Features

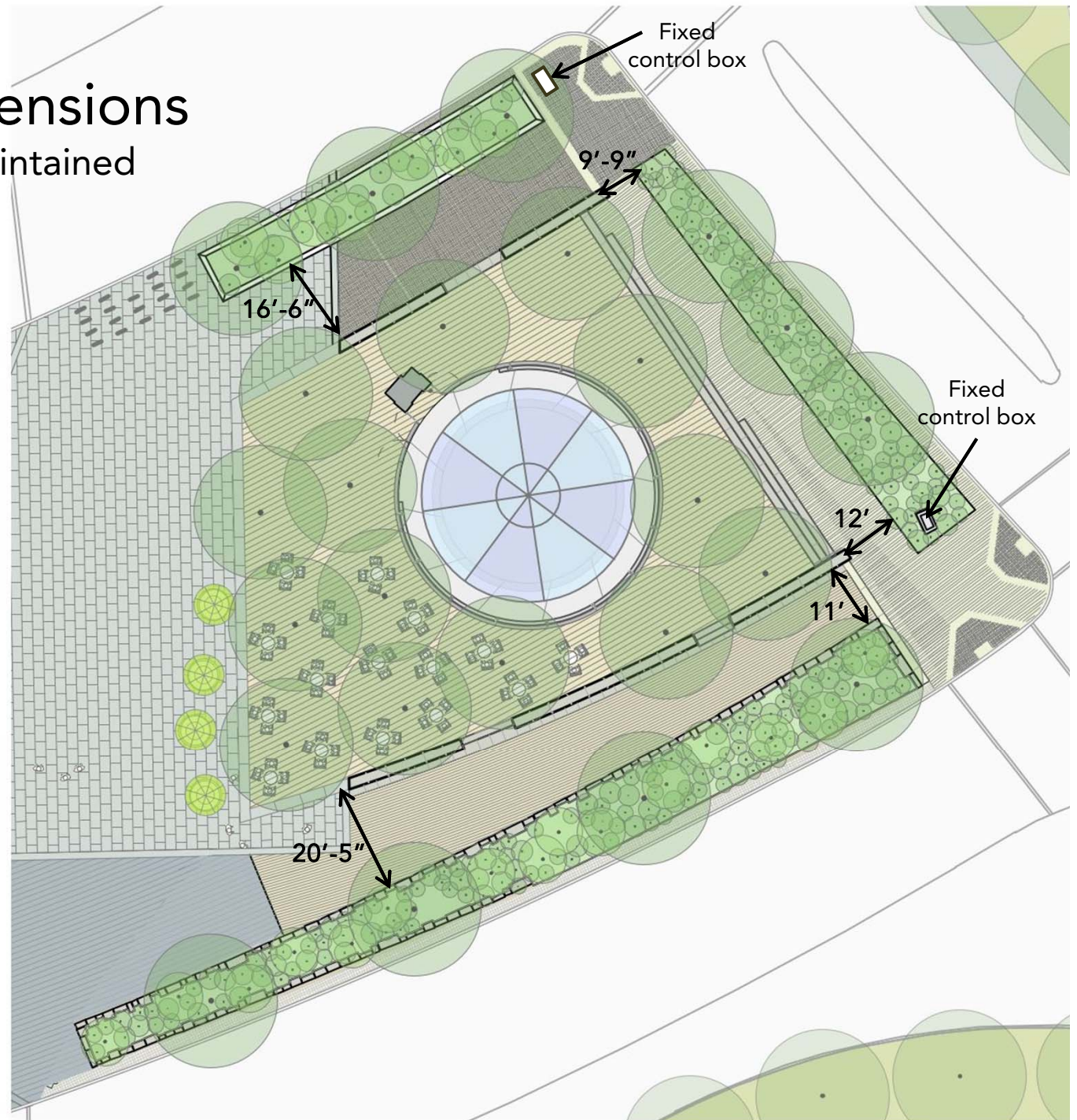


Circulation Patterns



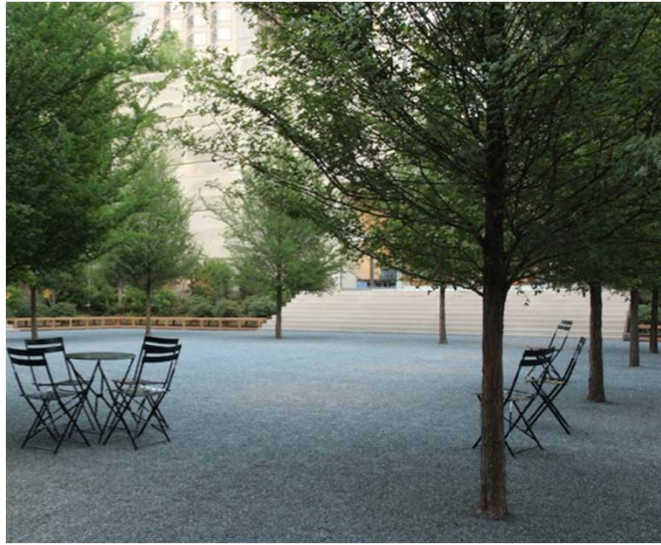
Walkway Dimensions

Maximum Widths Maintained

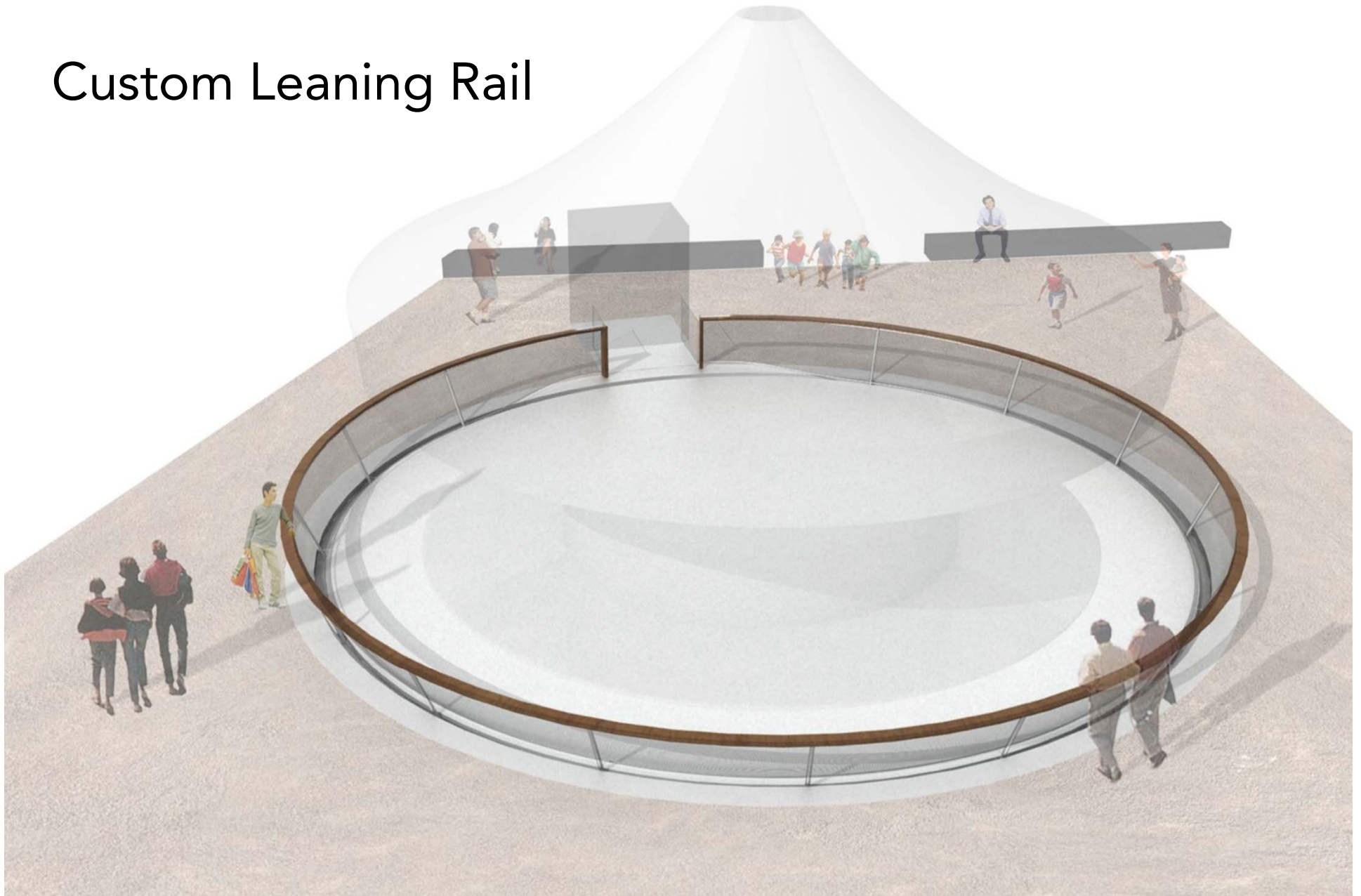


Landscape Concept

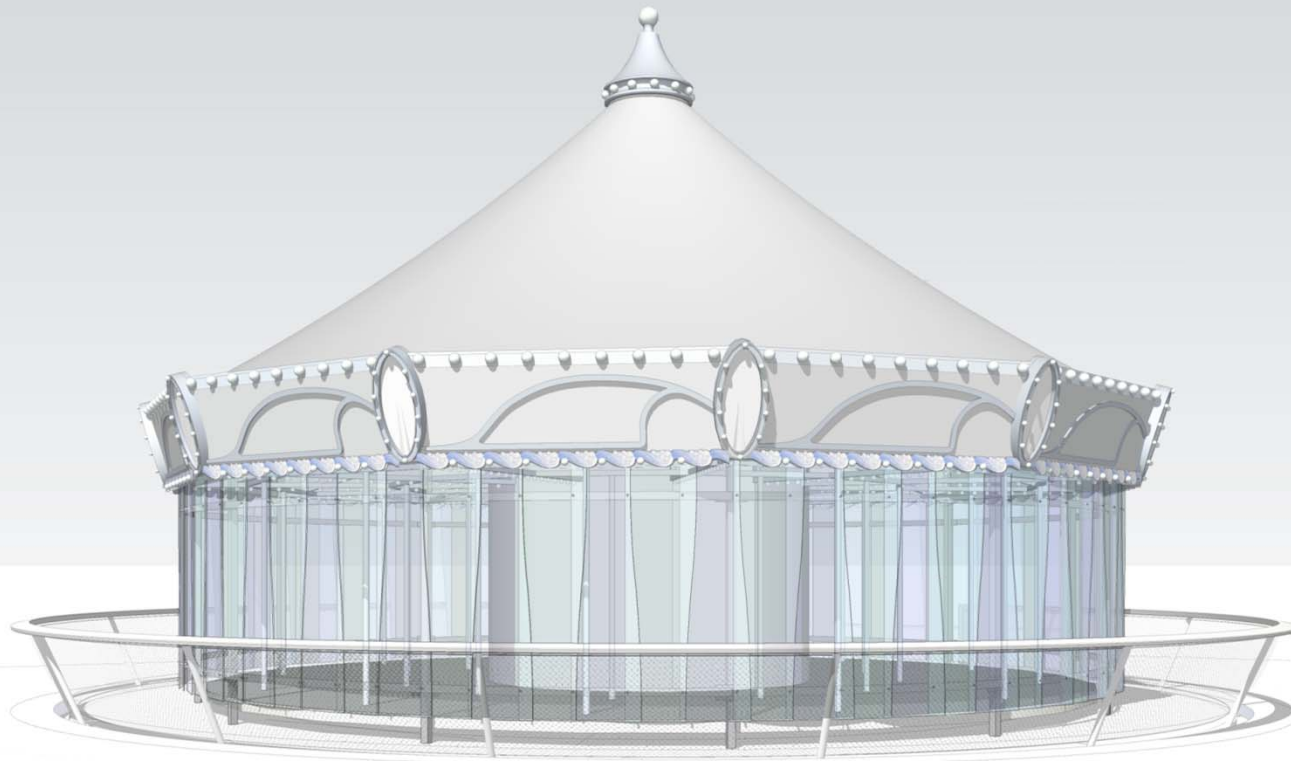
Carousel Set in a Grove of Trees



Custom Leaning Rail



Concept for Winter Enclosure



The design team is working on a system of translucent panels that would be installed in early winter and removed when carousel opens in spring. Interior lighting will create a “lantern effect” during off season months.

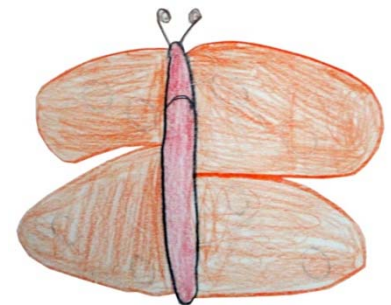
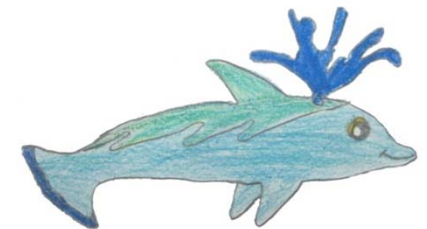
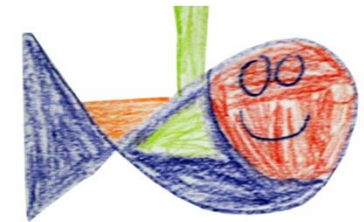
Carousel Design

Local Artists Jeff Briggs has Worked on Carousels Around the World



Children's Workshops

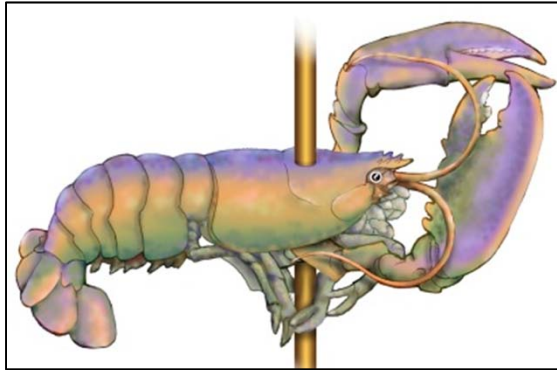
To gather ideas for the Greenway's one-of-a-kind carousel, The Conservancy sent staff members into four local elementary schools to conduct workshops, asking students to imagine and draw the kind of carousel characters that they would like to ride.



Artist's Process



1 Student's Drawing



2 Artist's Drawing



3 Armature



4 Plaster



5 Fiberglass Molds



6 Fiberglass Cast



7 Duplicates for Greenway Carousel



Finished Lobster



Finalized List of Carousel Characters

Representing Boston's Land, Air & Sea

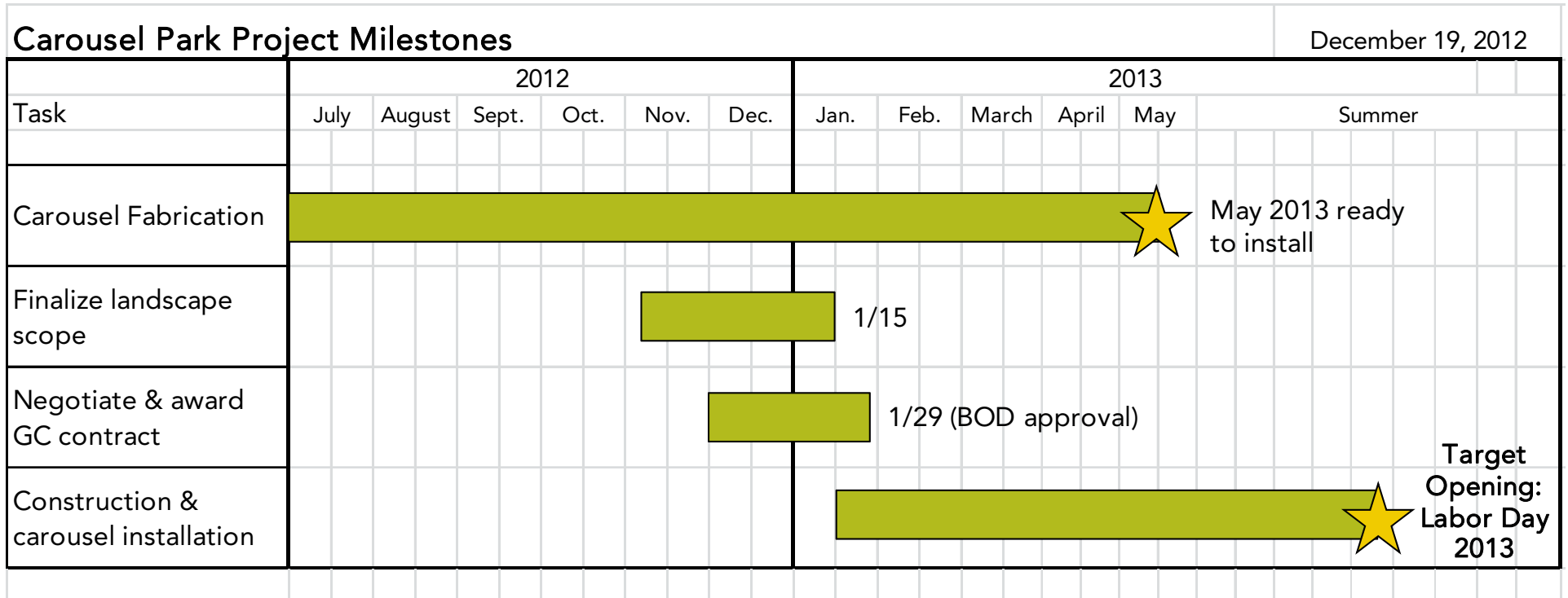
- Sea serpent "gondola"
- Harbor seal "chariot"
- Lobster
- Cod
- Whale
- Sea Turtle
- Fox
- Grasshopper
- Squirrel
- Skunk
- Barn owl
- Peregrine falcon
- Butterflies
- Rabbit





This past summer, students who participated in the Carousel Workshops in the fall of 2010 were invited back to see the products of their imaginations during "Sneak Peek Carousel Week"

Project Schedule & Milestones



Carousel Park: Coming Labor Day weekend 2013

