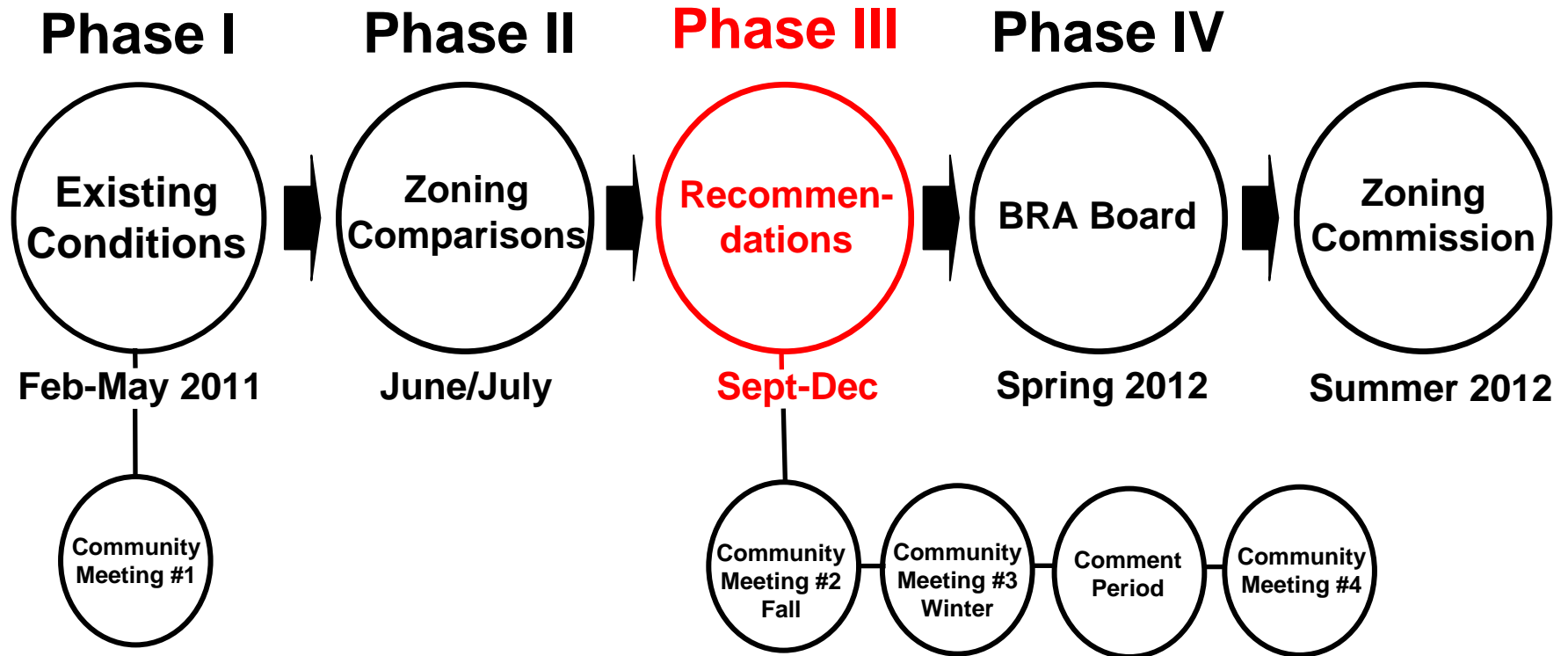


Dorchester Avenue Zoning Update

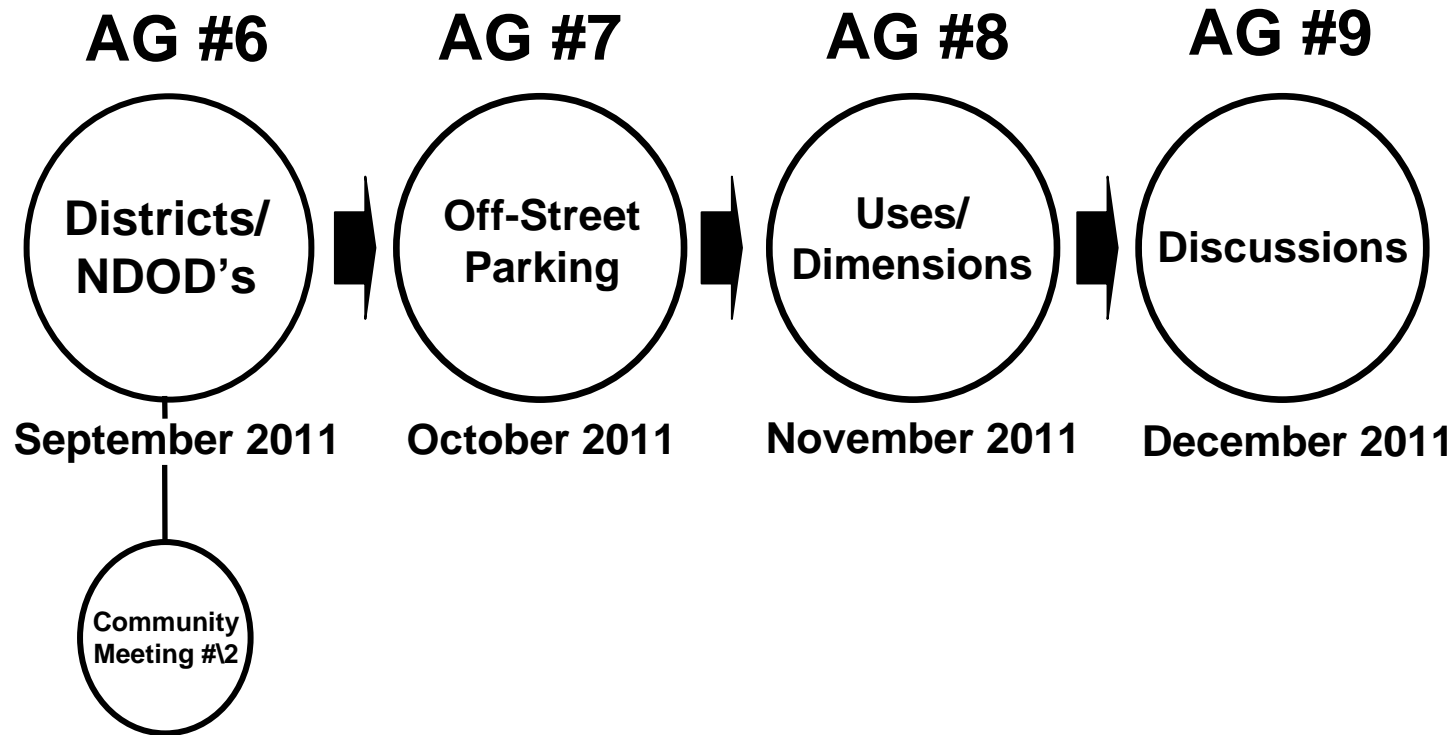
AG Meeting #6

www.dotavzoning.org

Proposed Process



Proposed AG Meetings



Recommendations Preview

Subdistricts

- *Use Dorchester Neighborhood Subdistricts*
- *Change LI subdistrict in Glover's Corner to NS*
- *Extend MFR/LS subdistrict south of Fields Corner*

NDOD's

- *Extend existing NDOD's where applicable*
- *New NDOD in Fields Corner*

Use Regulations

- *Use Dorchester Neighborhood Use Regulations*

Dimensional Regulations

- *Use Dorchester Neighborhood Dimensional Regulations*

Recommendations-Preview

Design Review

- *Use Dorchester Neighborhood Design Review Regulations*

Urban Design Regulations

- *Use Dorchester Neighborhood Urban Design Regulations*

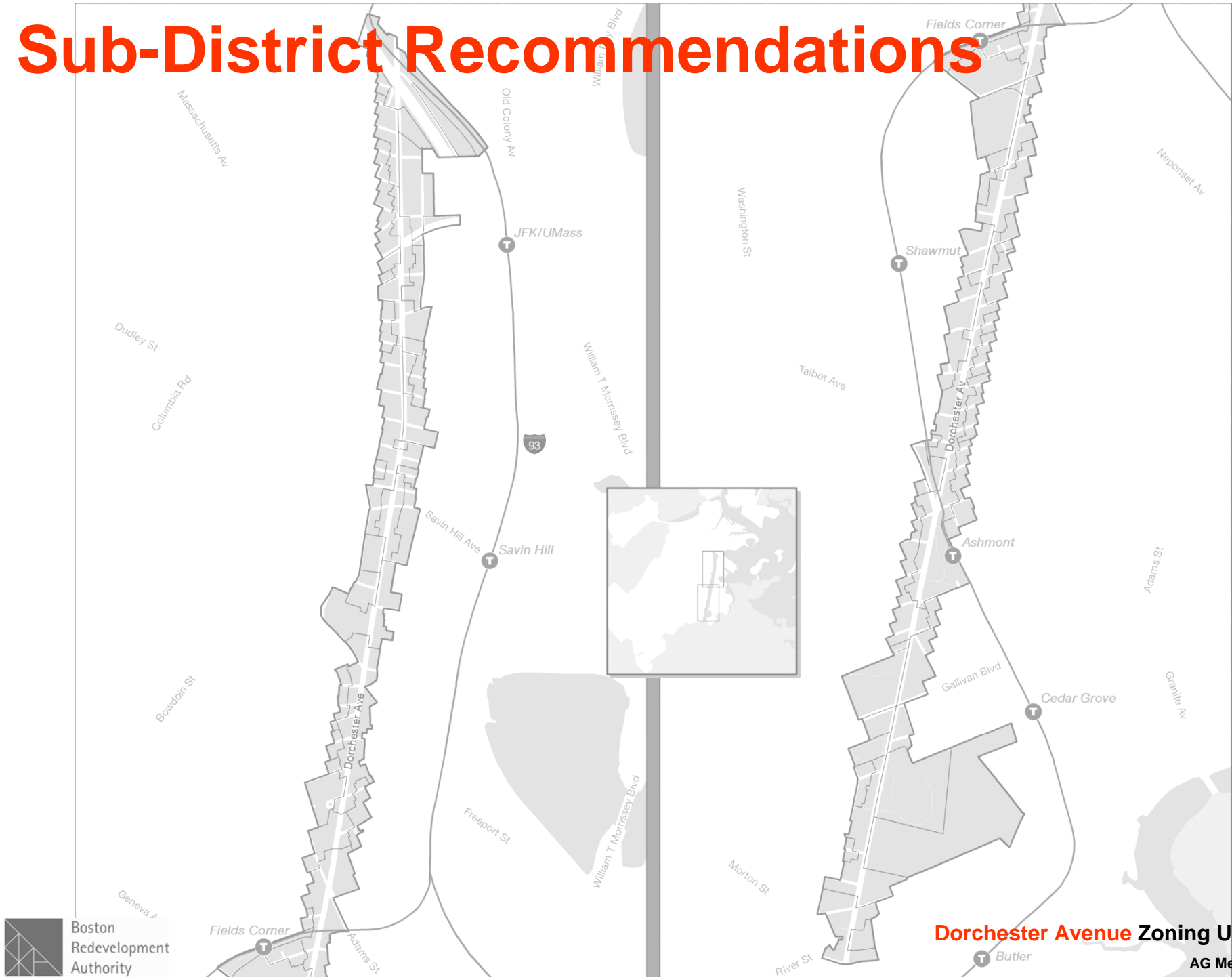
Signage

- *Use Dorchester Neighborhood Signage Regulations*

Off-Street Parking

- *Use Dorchester Neighborhood Off-Street Parking Regulations in Residential Sub-Districts*
- *Initiate Parking “Maximums” in Dorchester Avenue Business Sub-Districts*

Sub-District Recommendations



Sub-Districts Overview

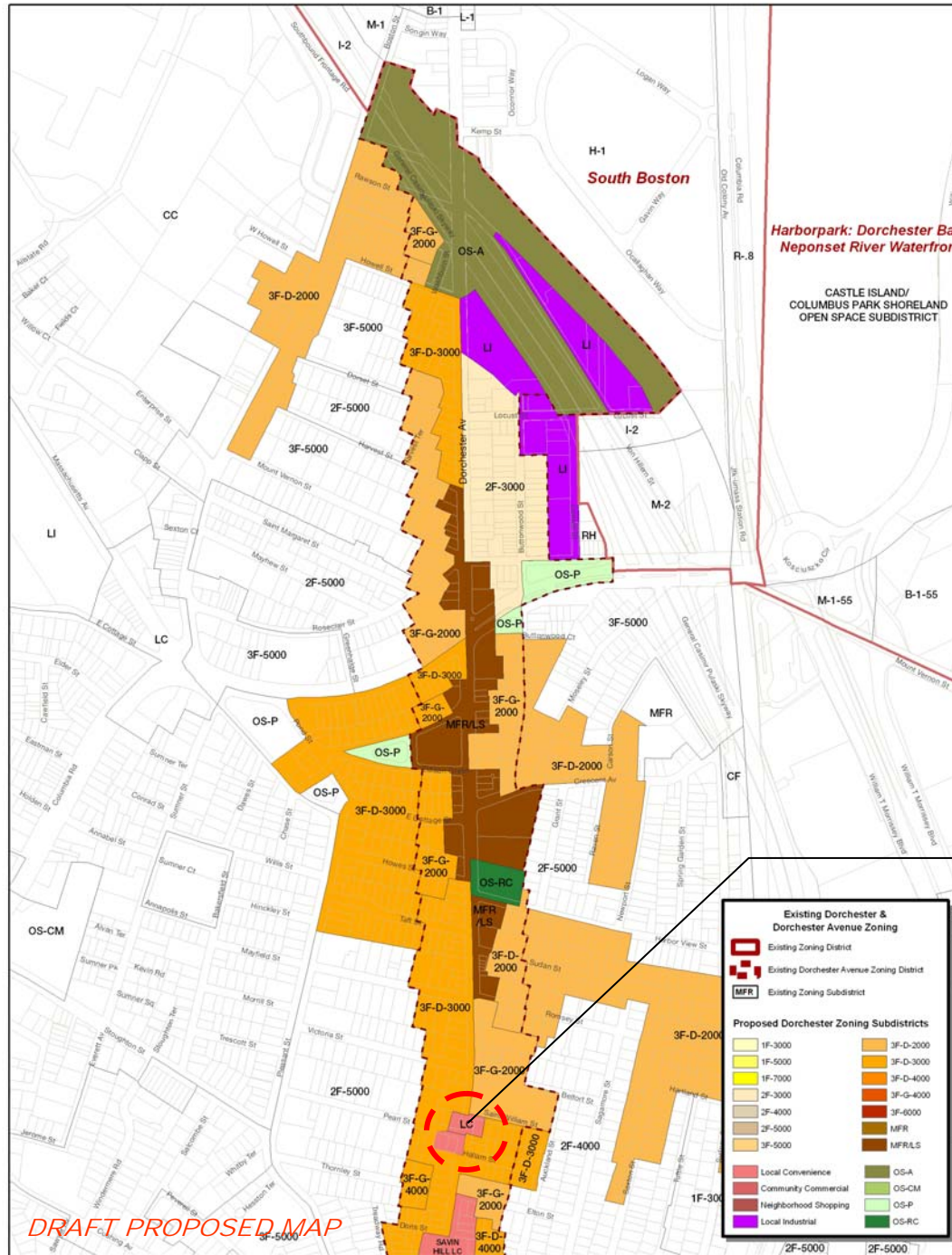
	<u>Dorchester Ave</u>	<u>Dorchester</u>
One Family	1F-4000	1F-3000
	1F-5000	1F-5000
<hr/>		
Two Family	2F-4000	2F-4000
	2F-5000	2F-5000
<hr/>		
Three Family	3F-G-2000	3F-5000
	3F-G-3000	3F-6000
	3F-G-4000	3F-D-2000
	3F-G-5000	3F-D-3000
	3F-G-6000	
	3F-D-3000	
	3F-D-4000	
<hr/>		
Multi-Family	SAME	
Business & Industrial	SAME	

Key: RED = Dot Ave Zoning Sub-district not found in Dorchester Zoning

Section 1

I-93 to Savin Hill

Sub-District Change #1



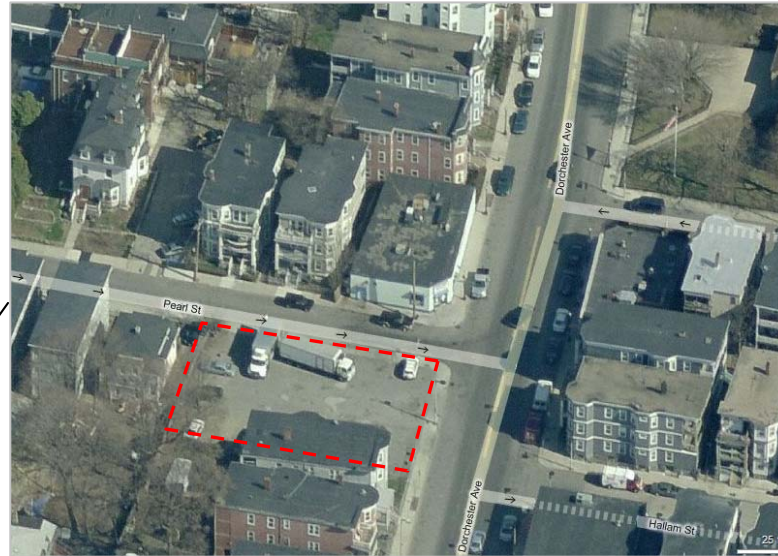
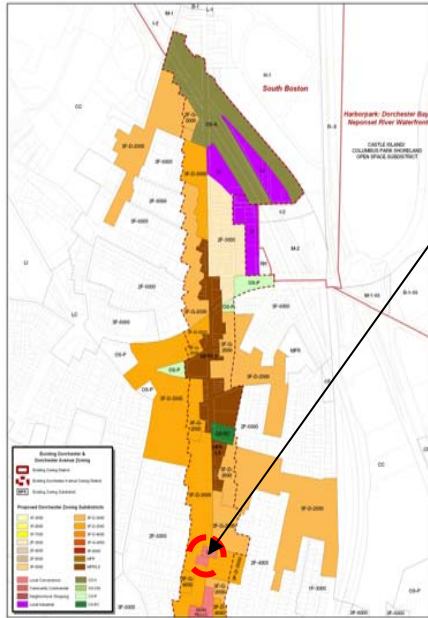
DRAFT PROPOSED MAP

Dorchester Avenue Zoning Update
AG Meeting #6

Section 1

I-93 to Savin Hill

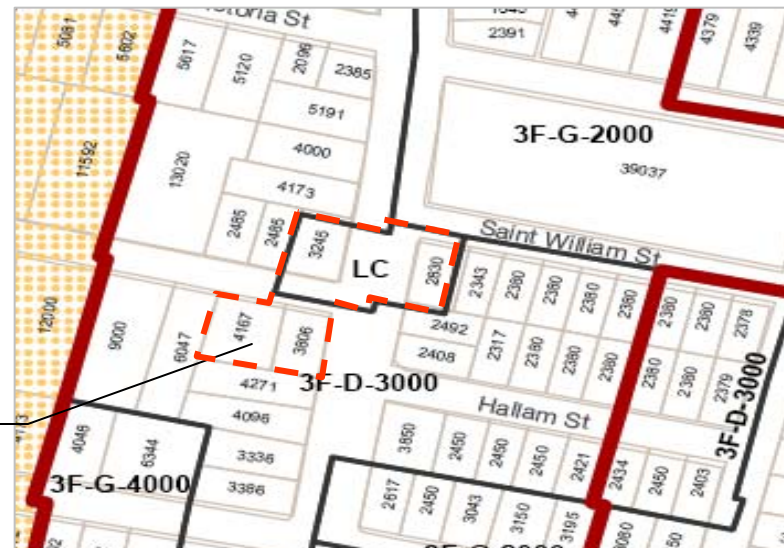
Sub-District Change #1



Aerial View

Sub-District Change #1

LC expanded to two adjacent parcels

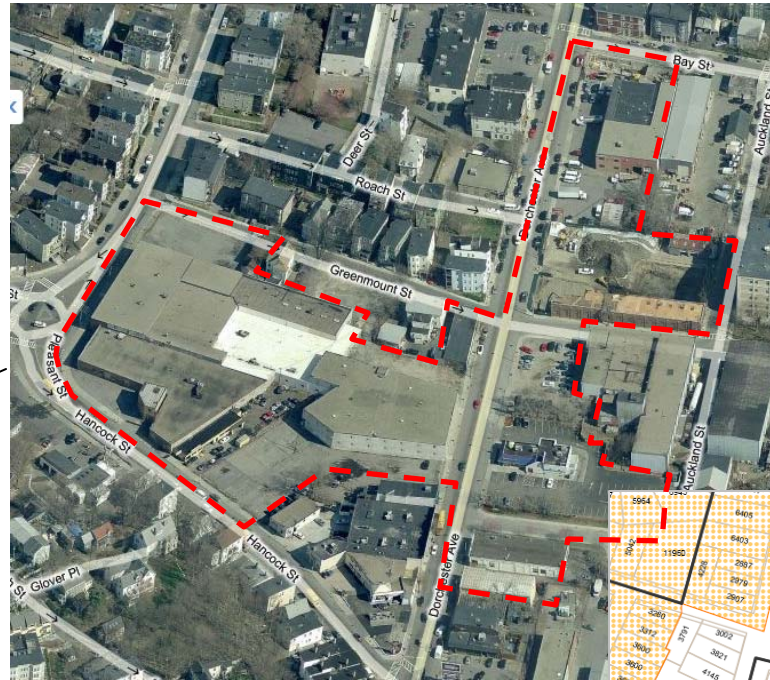
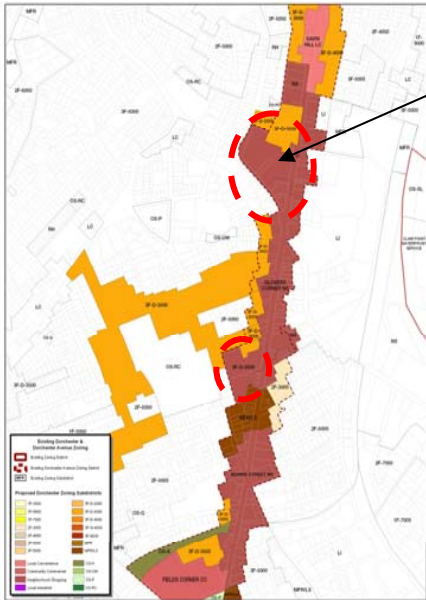


Existing Zoning

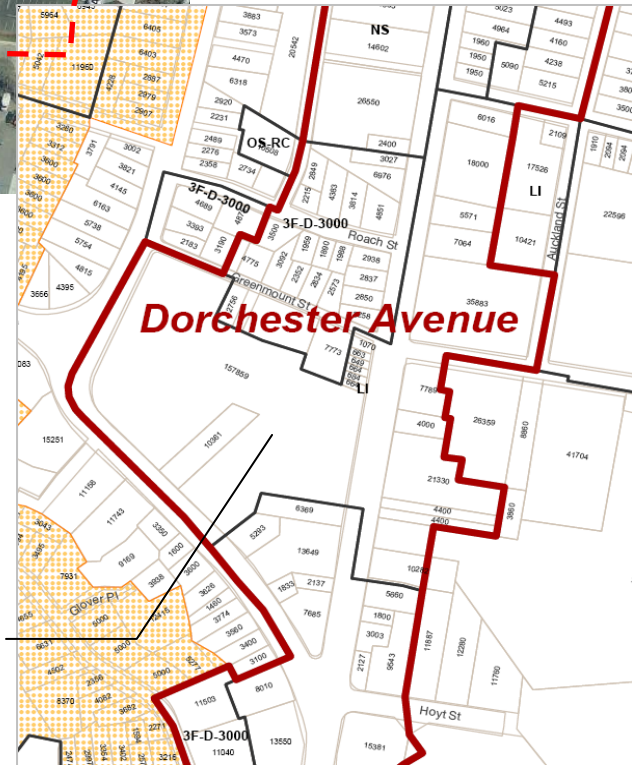
Section 2

Savin Hill to Fields Corner

Sub-District Change #2



Aerial View



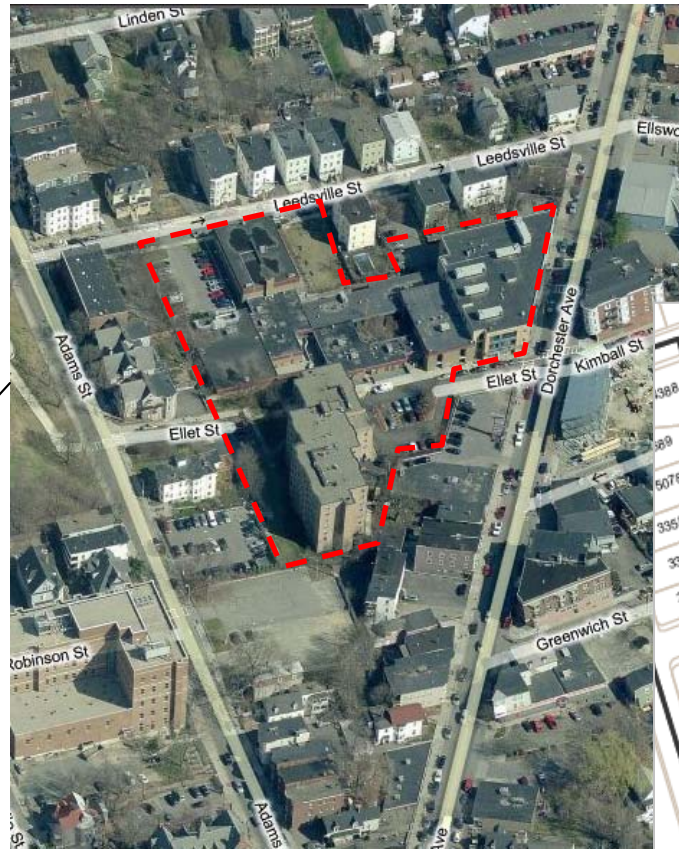
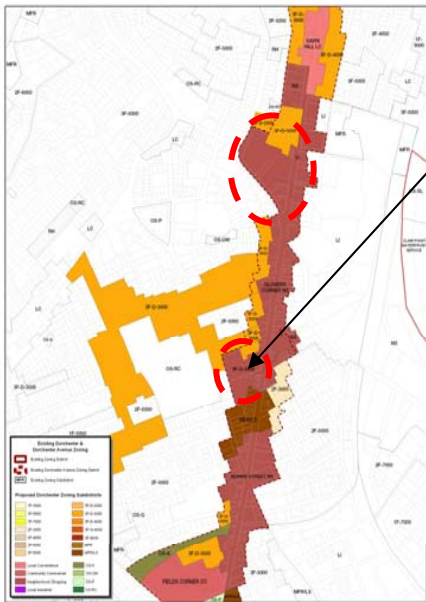
Existing Zoning

Sub-District Change #2
LI changed to NS,
combined with Glovers
Corner NS

Section 2

Savin Hill to Fields Corner

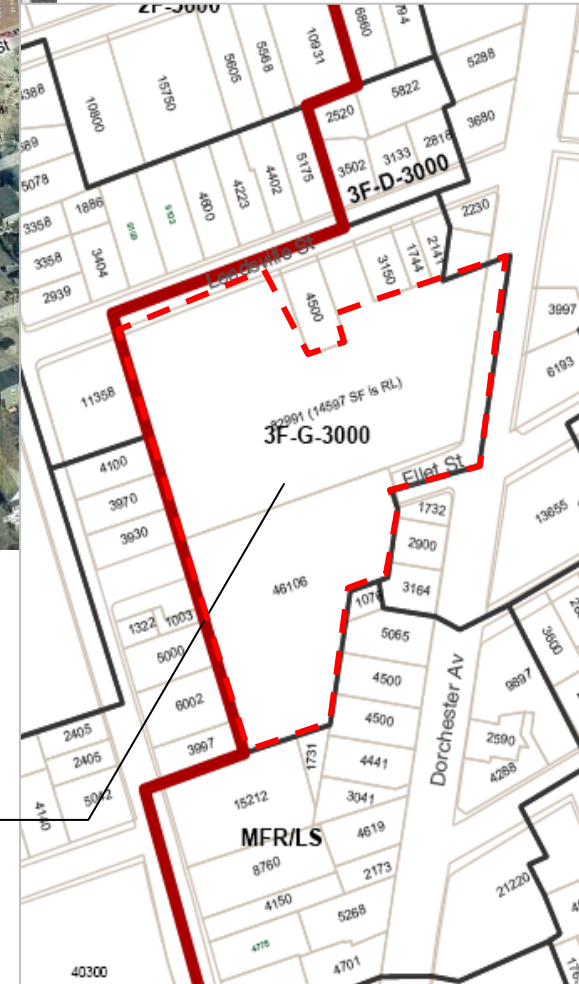
Sub-District Change #3



Aerial View

Sub-District Change #3

Majority of existing 3F-3000 to NS, combined with Glovers Corner NS

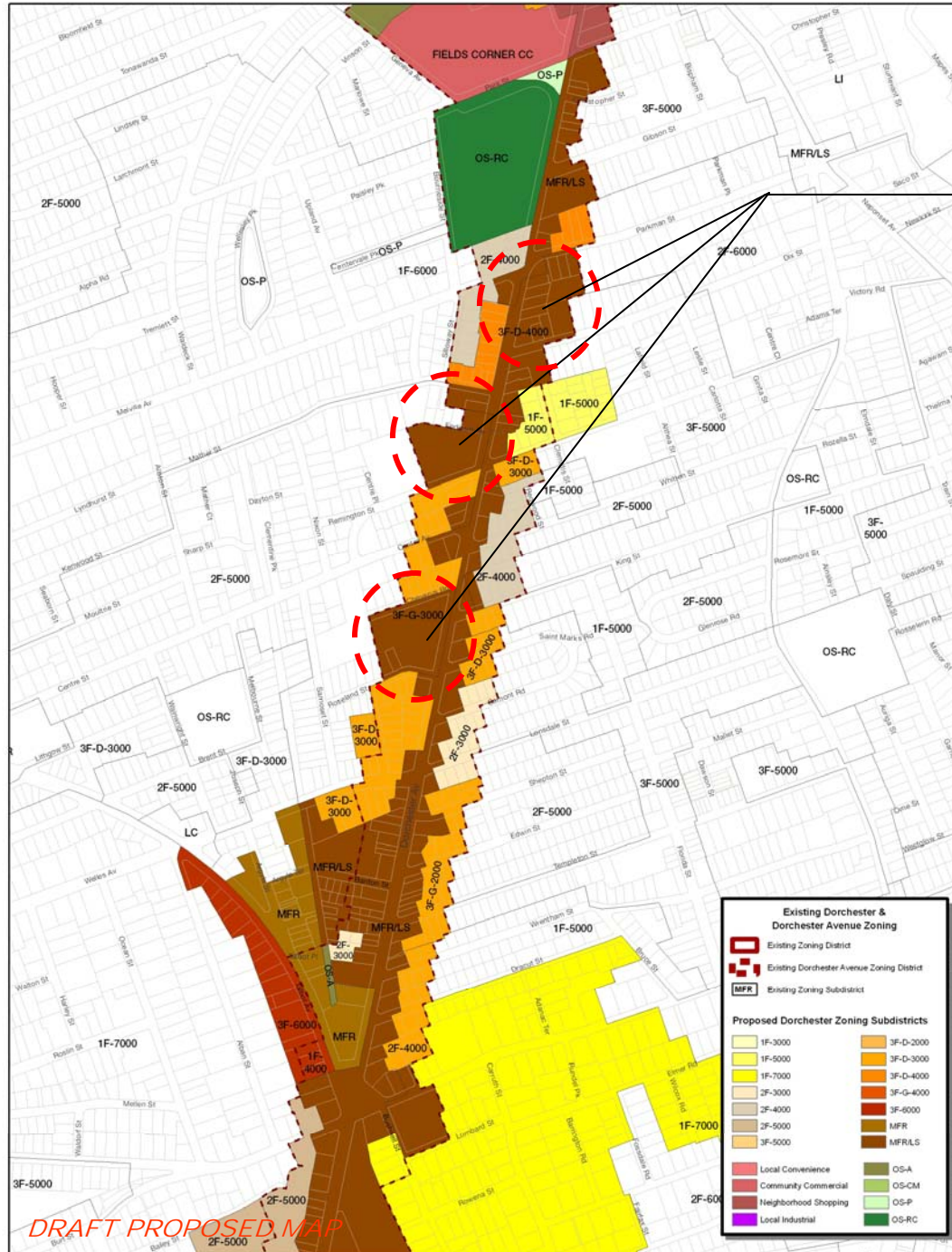


Existing Zoning

Section 3

Fields Corner to Peabody Square

Sub-District Change #4



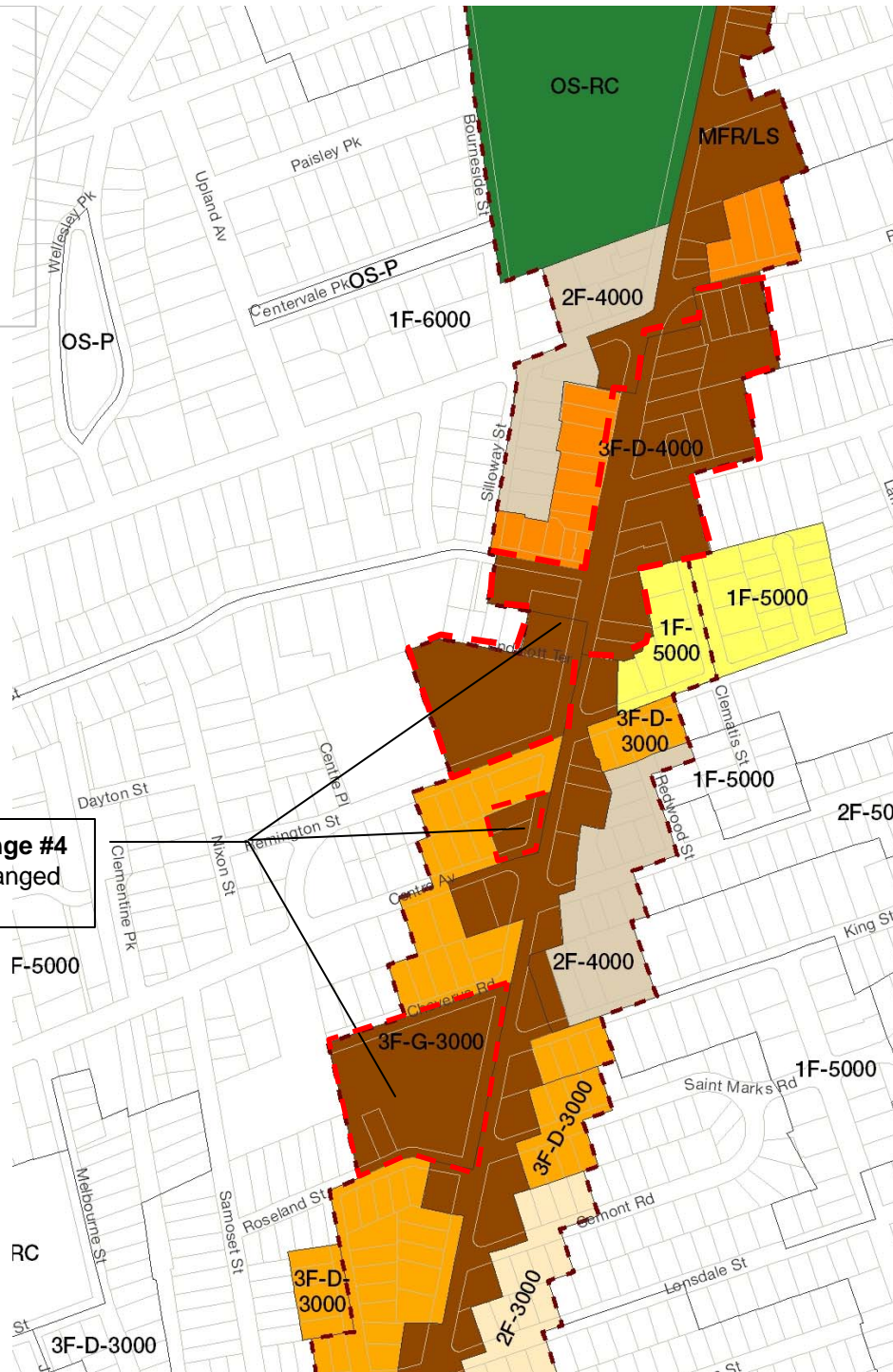
Subdistrict Change #4
3F-3000 changed to MFR/LS

Section 3

**Fields Corner to
Peabody Square**

(St. Mark's Area)

Sub-District Change #4



Subdistrict Change #4
3F-3000/4000 changed
to MFR/LS

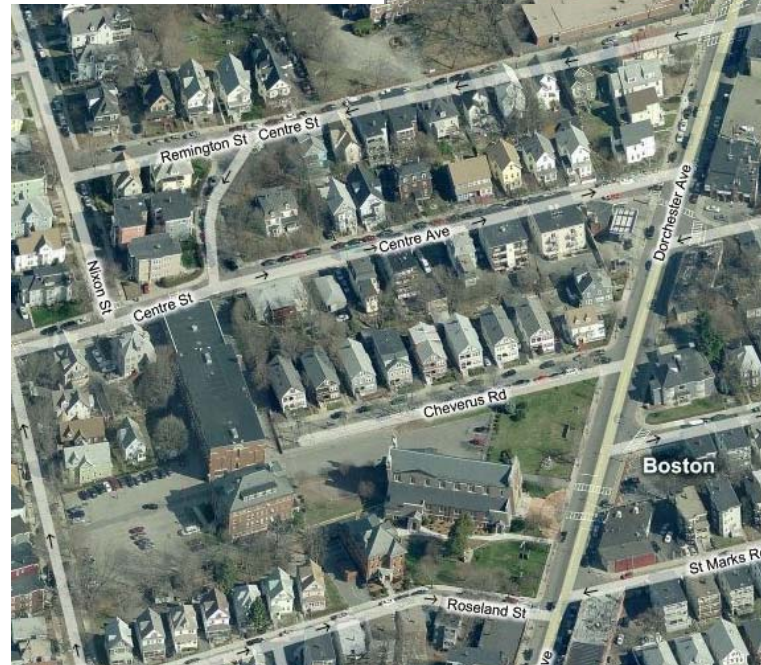
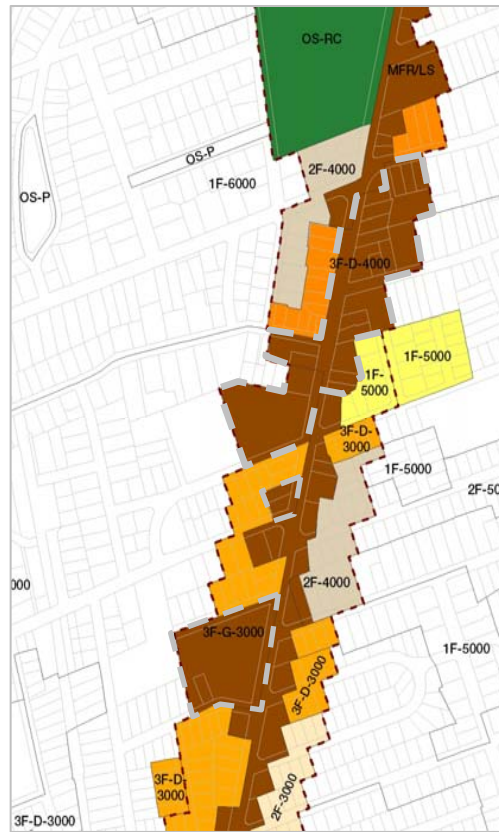


Section 3

Fields Corner to
Peabody Square

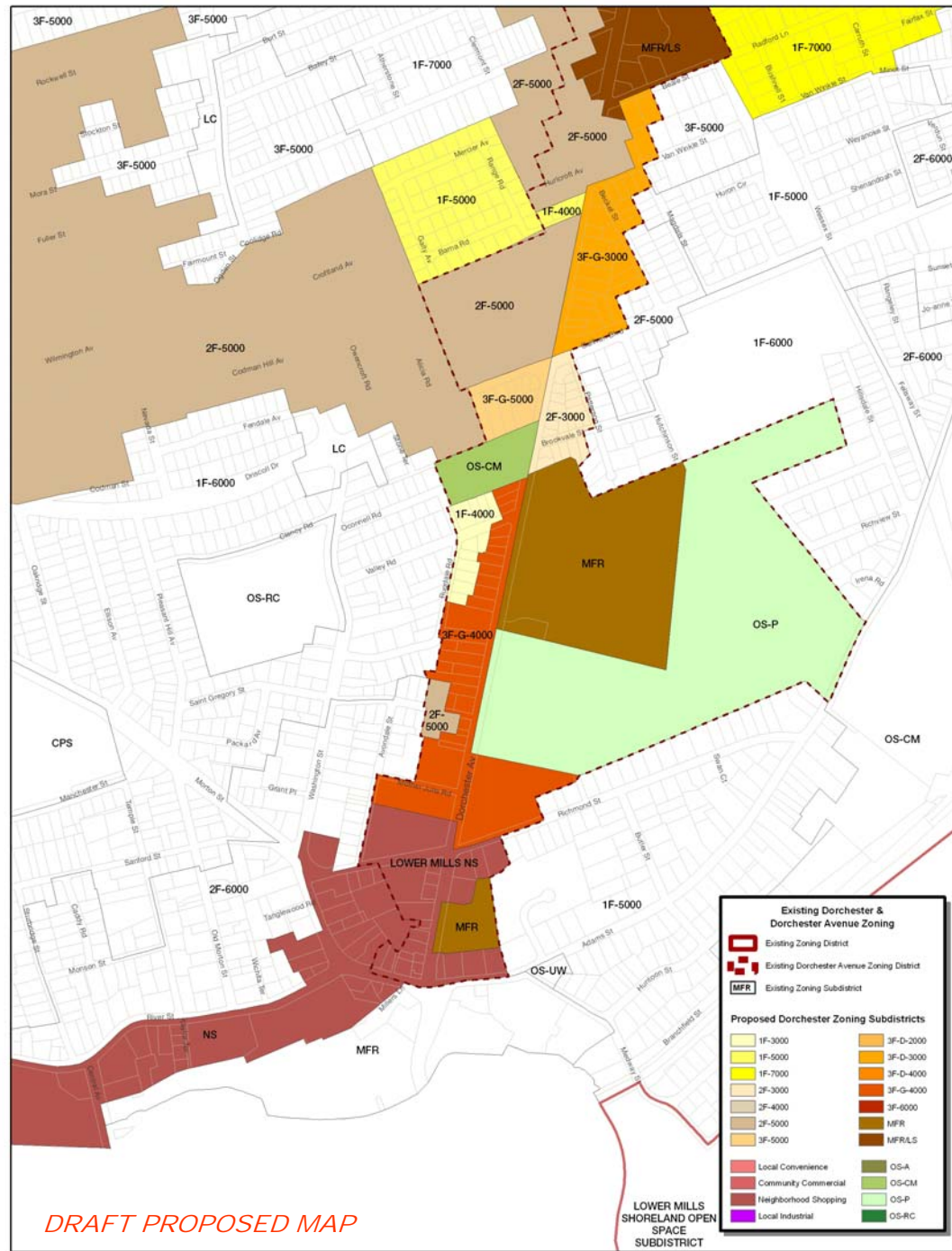
(St. Mark's Area)

Sub-District Change #4

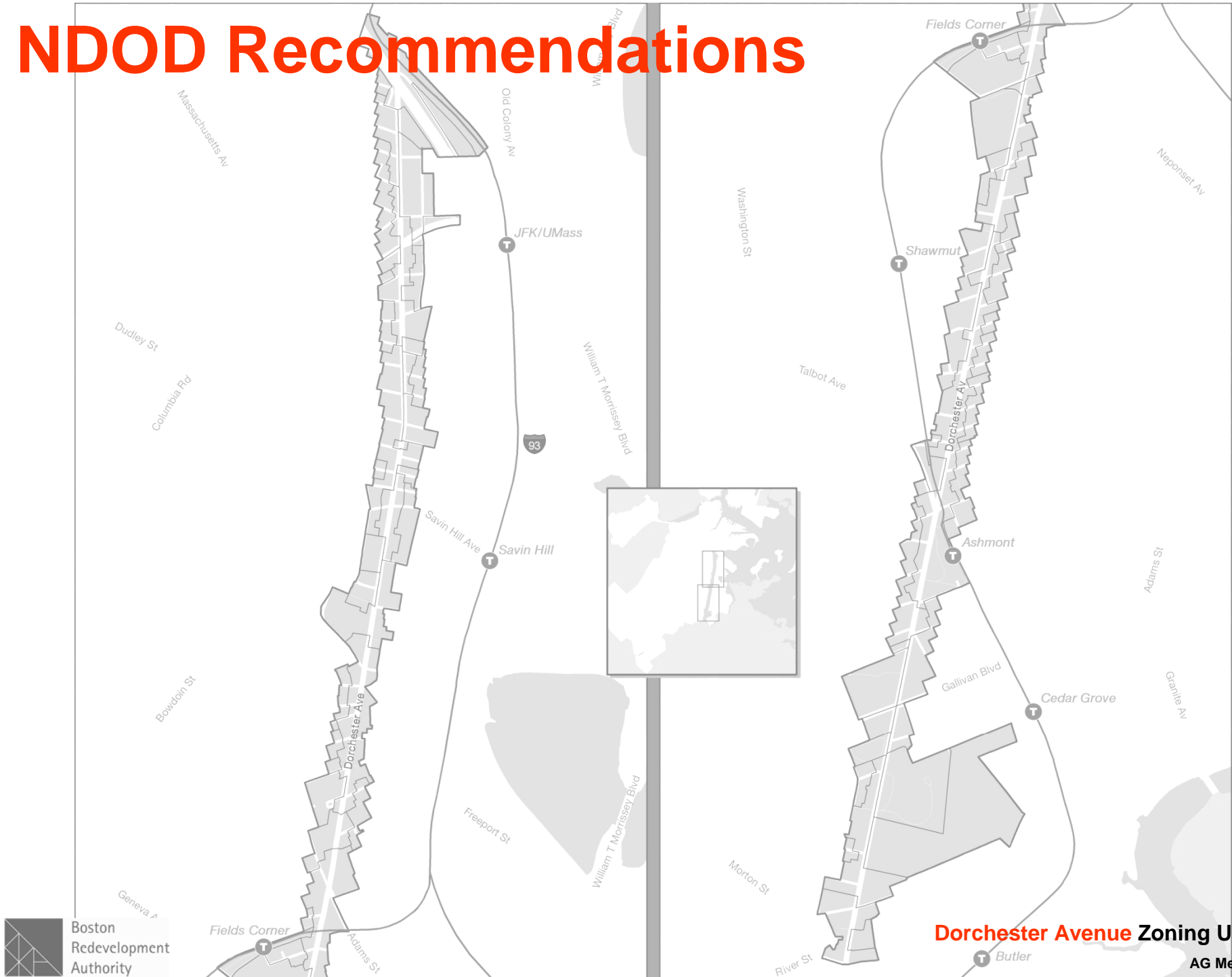


Section 4

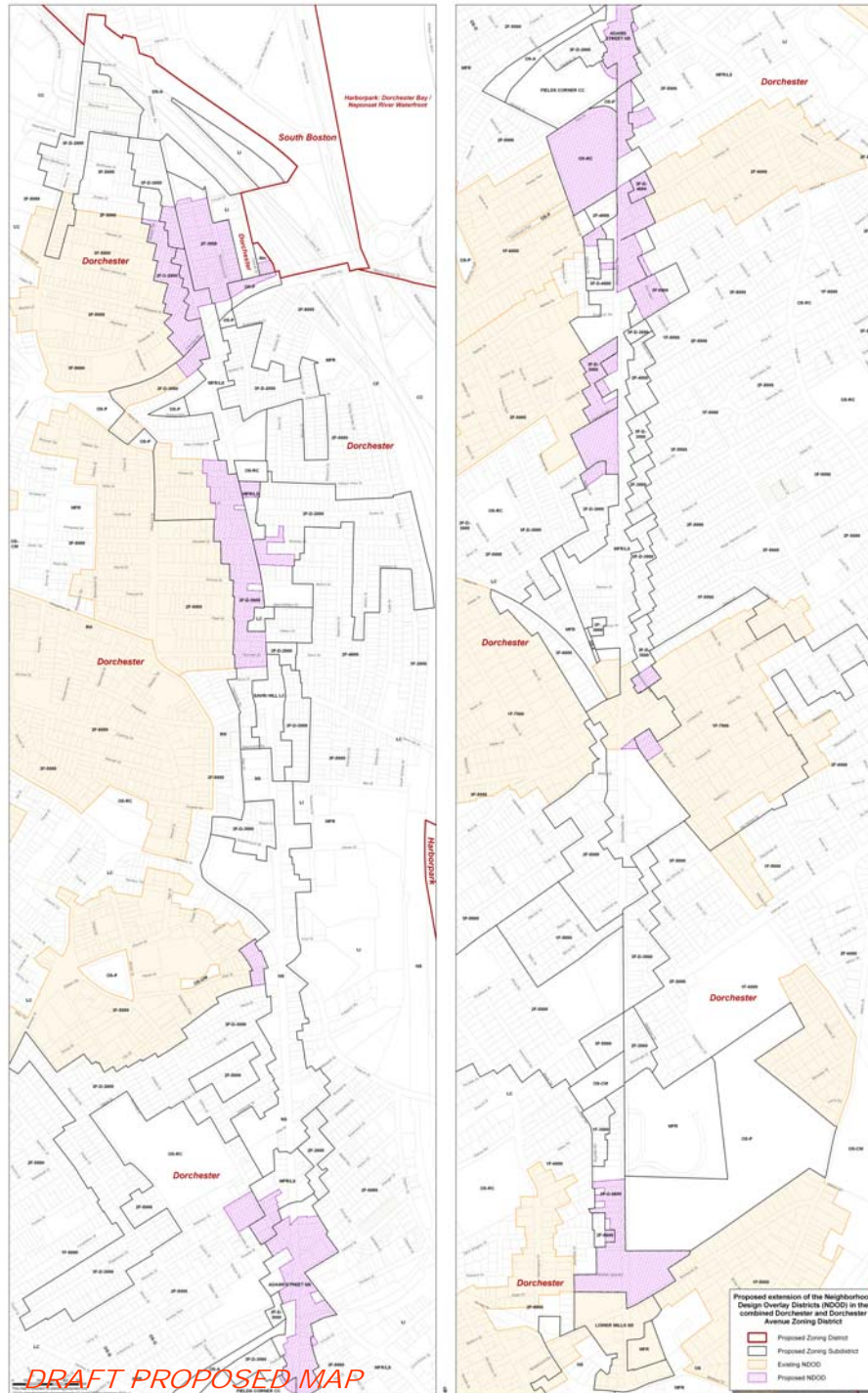
Peabody Square to Lower Mills



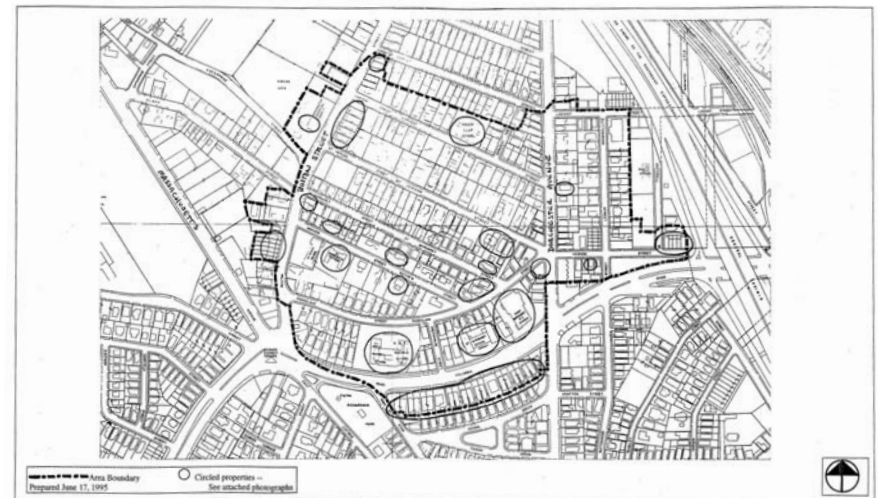
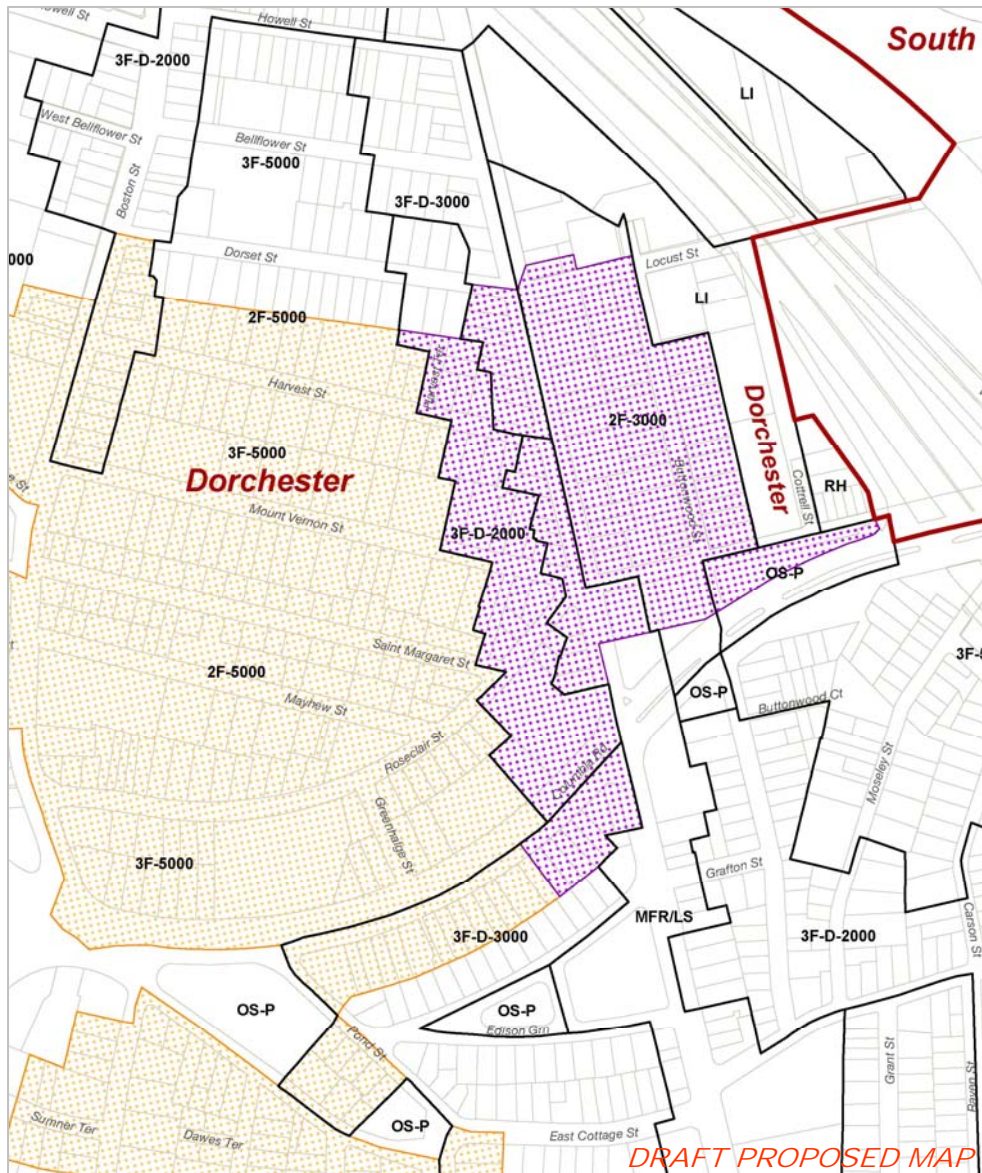
NDOD Recommendations



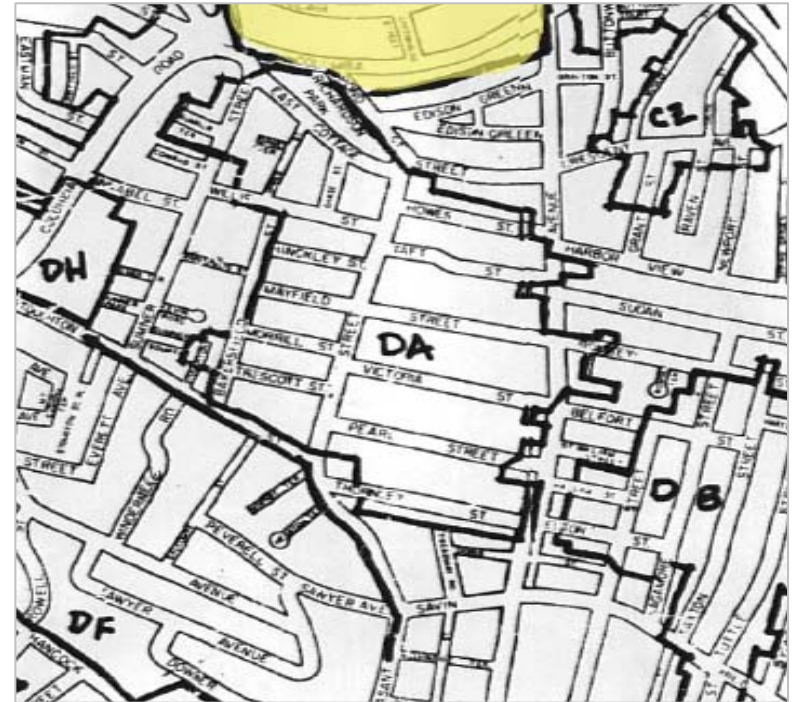
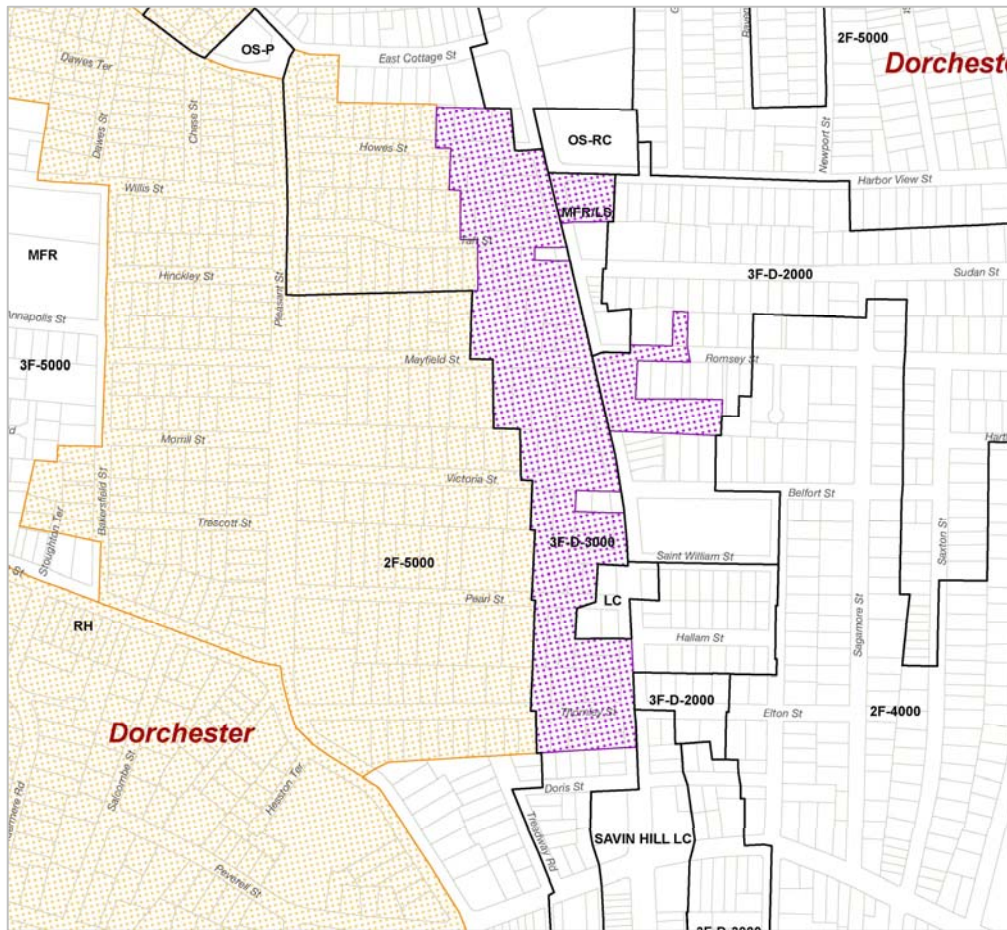
NDODs



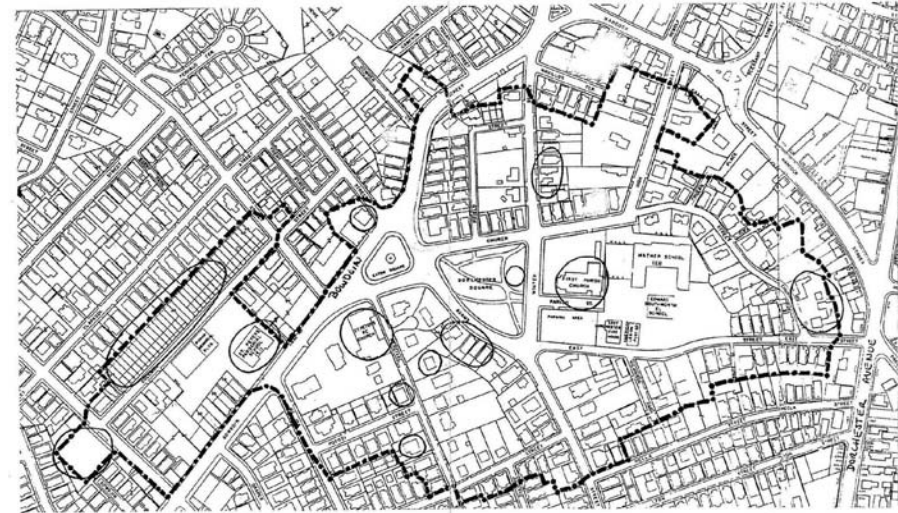
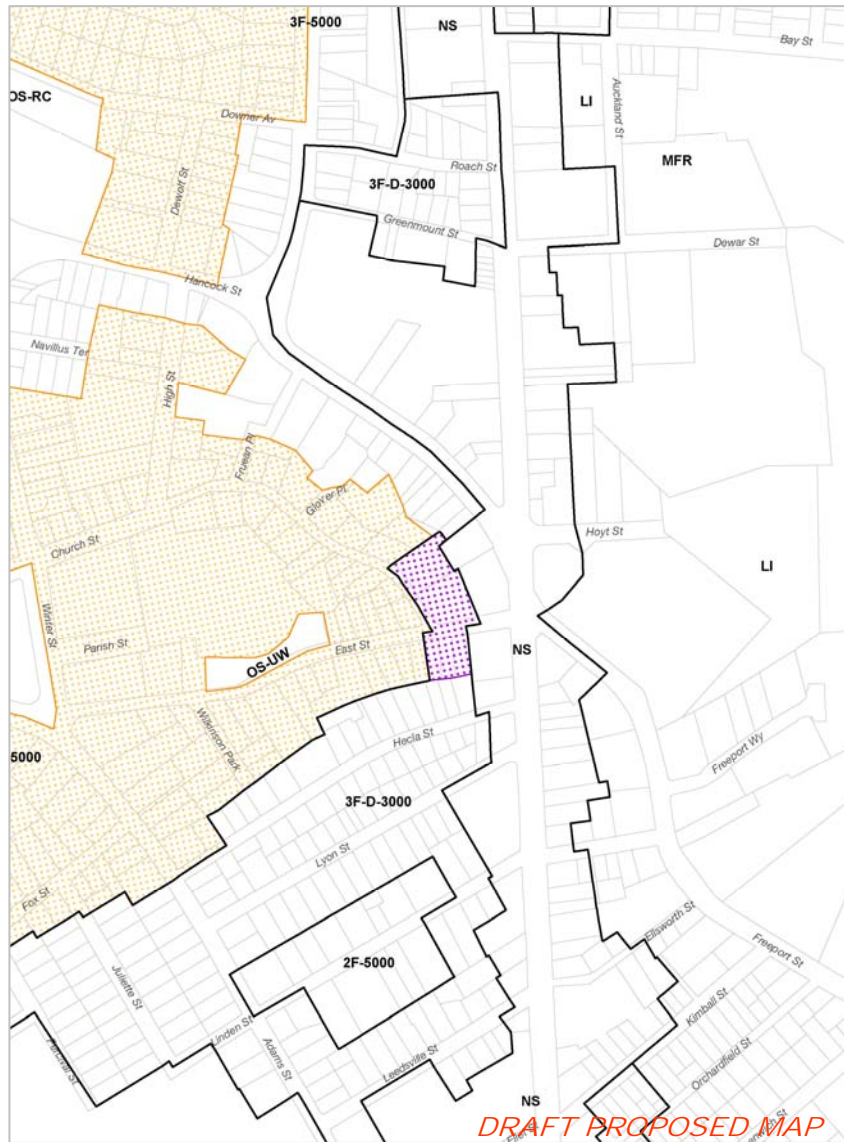
St. Margaret's NDOD



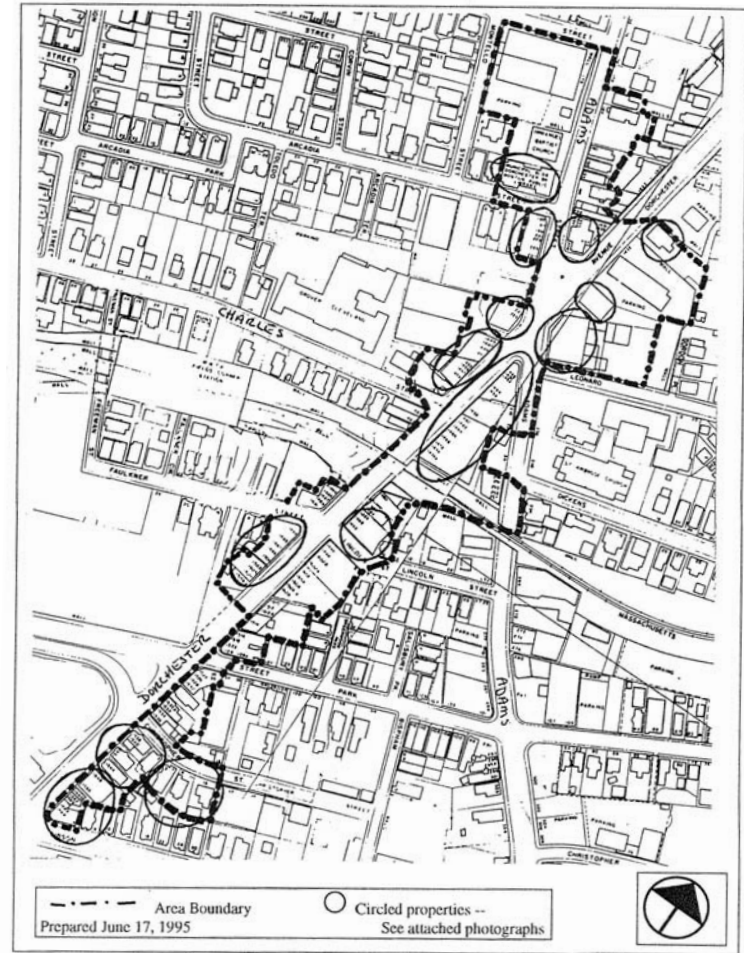
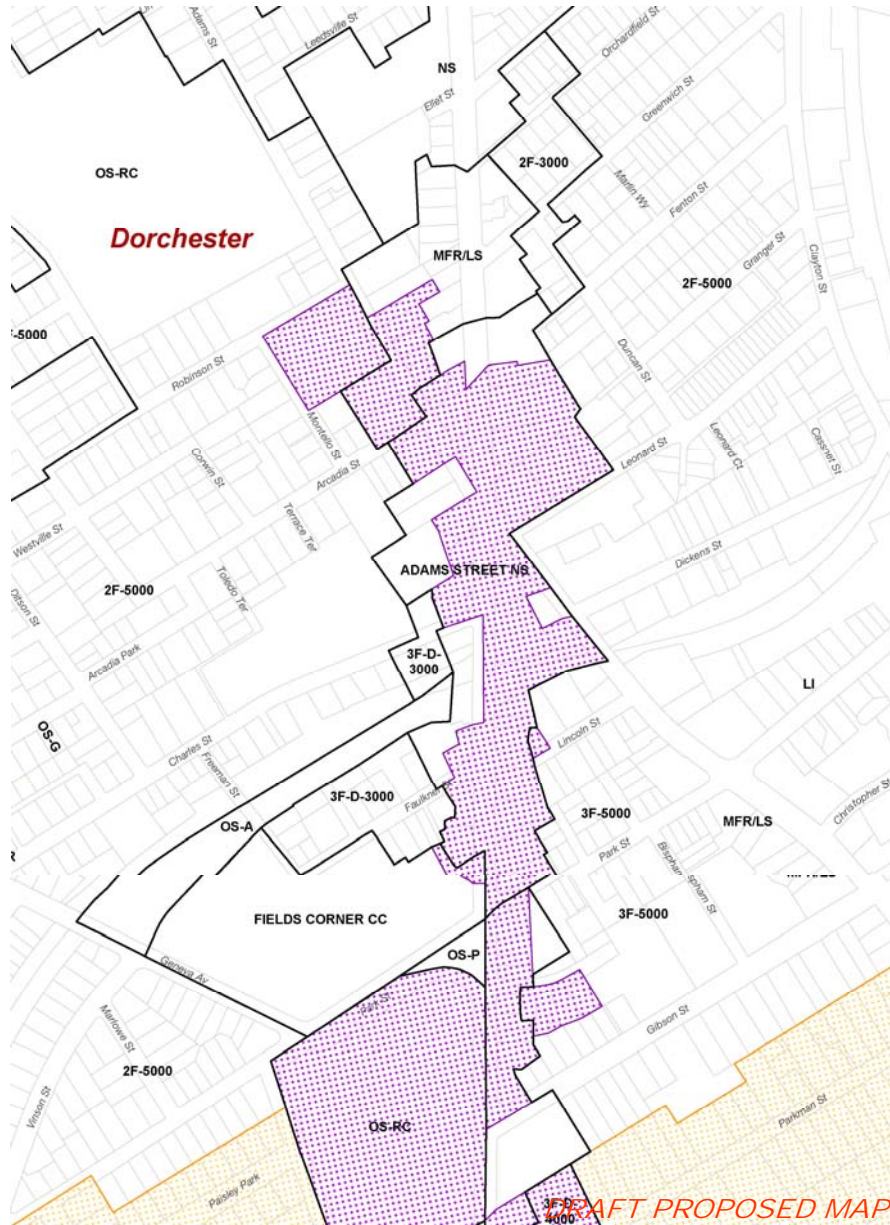
Pleasant Street North NDOD



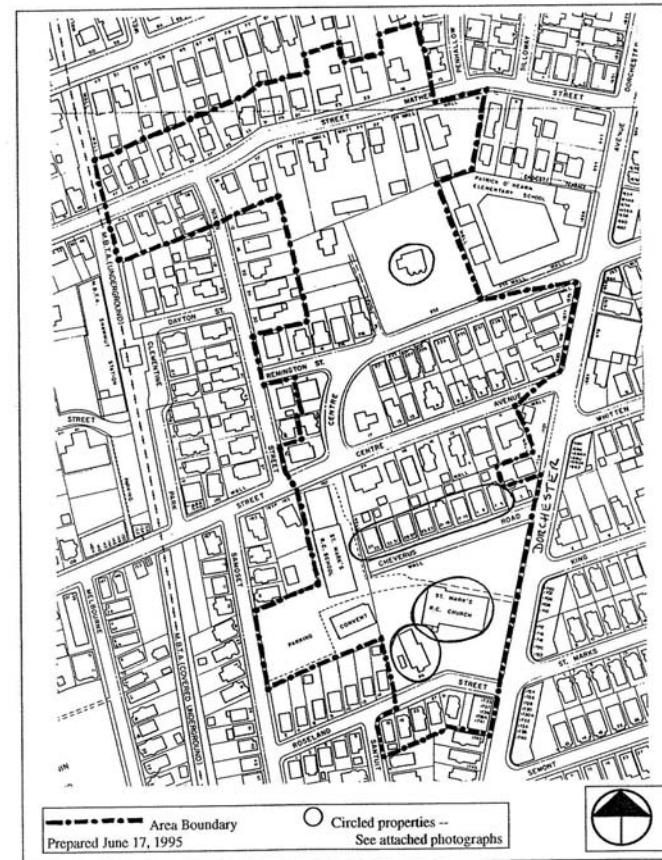
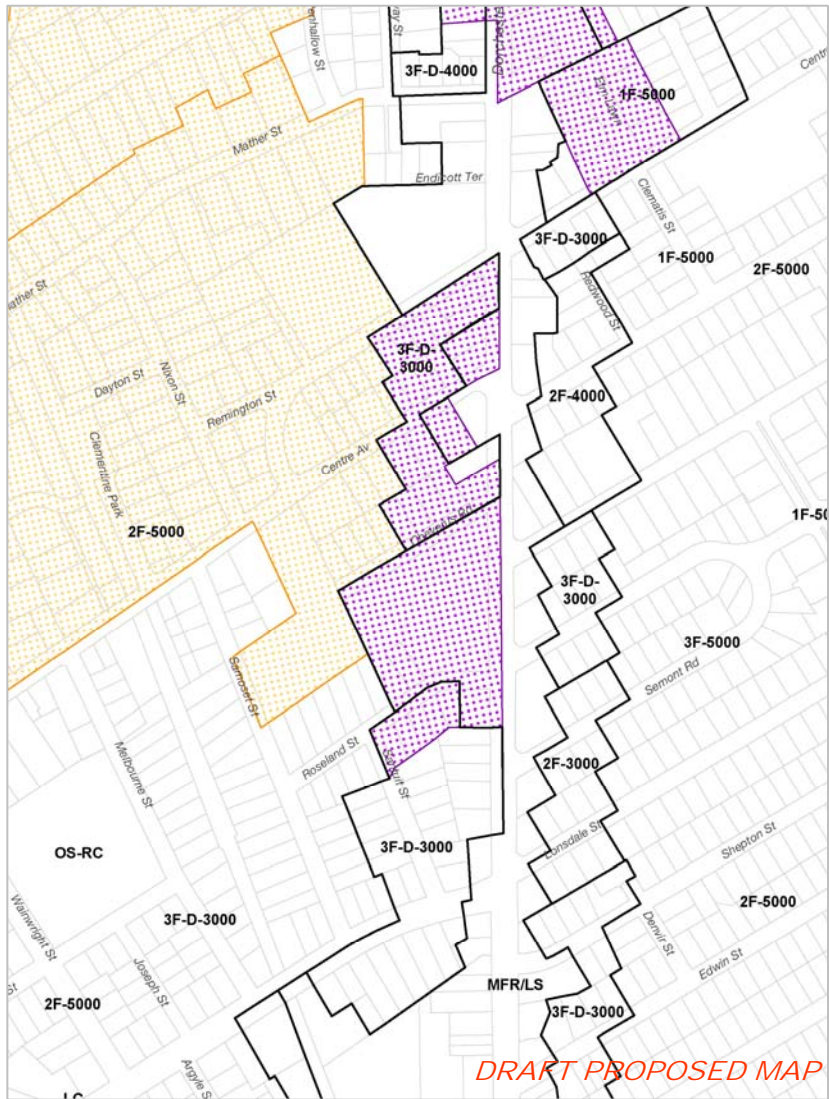
Meetinghouse Hill NDOD



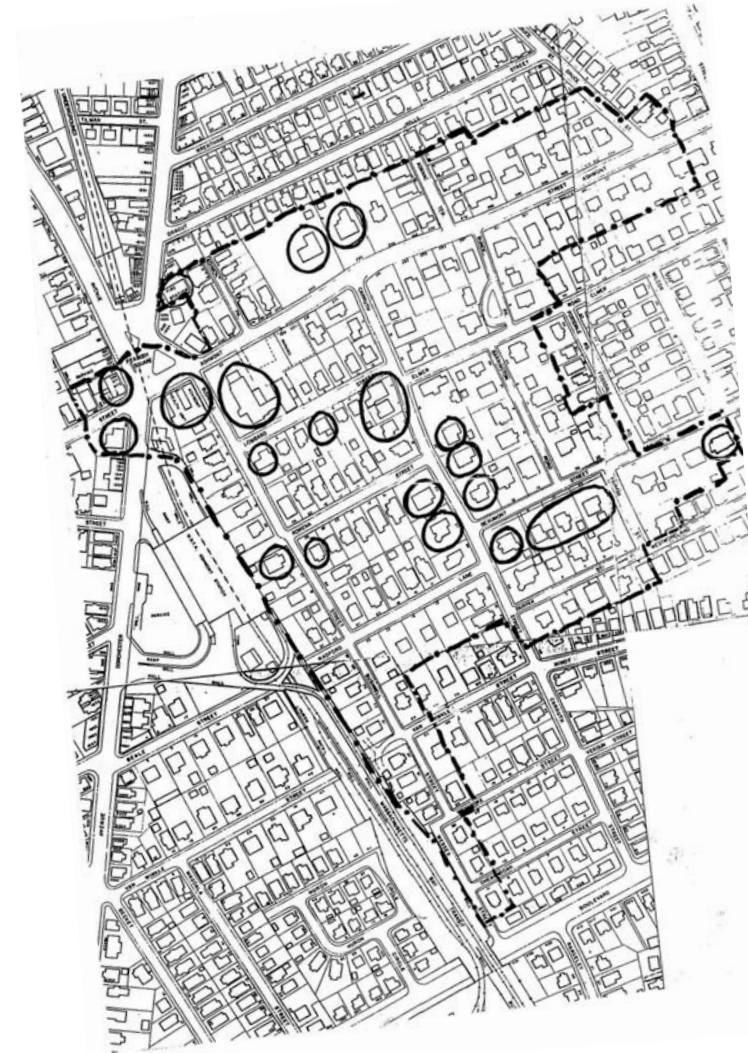
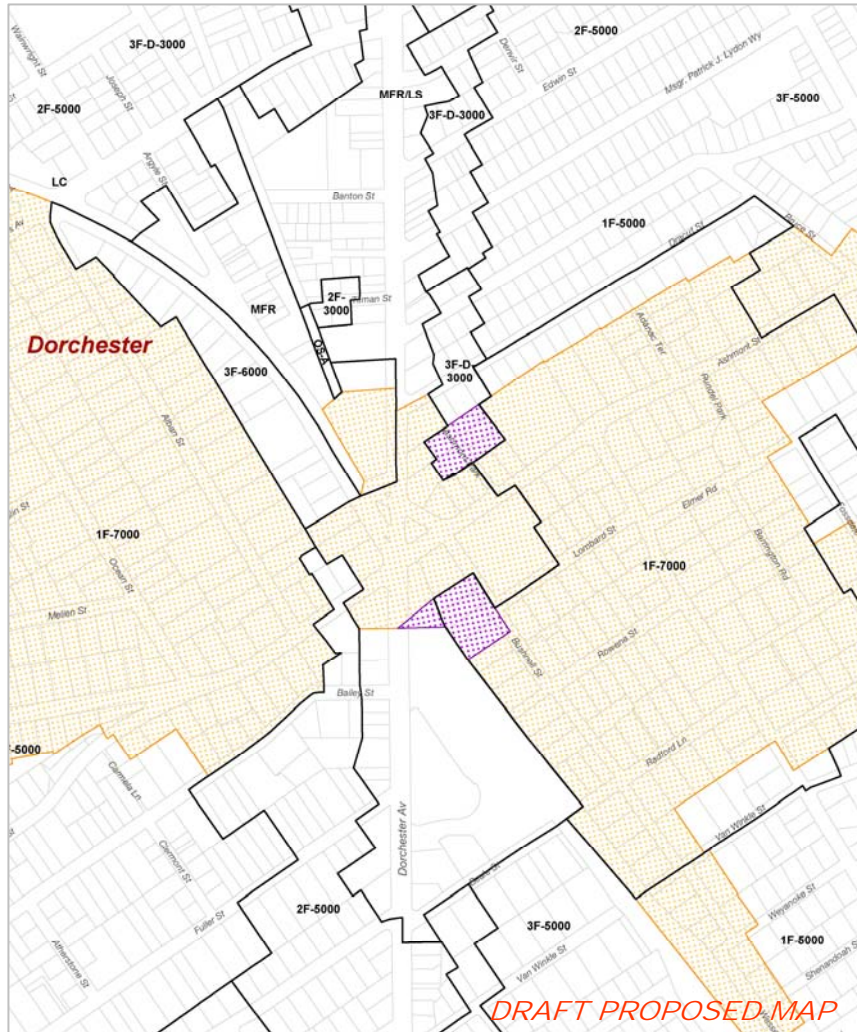
Fields Corner NDOD



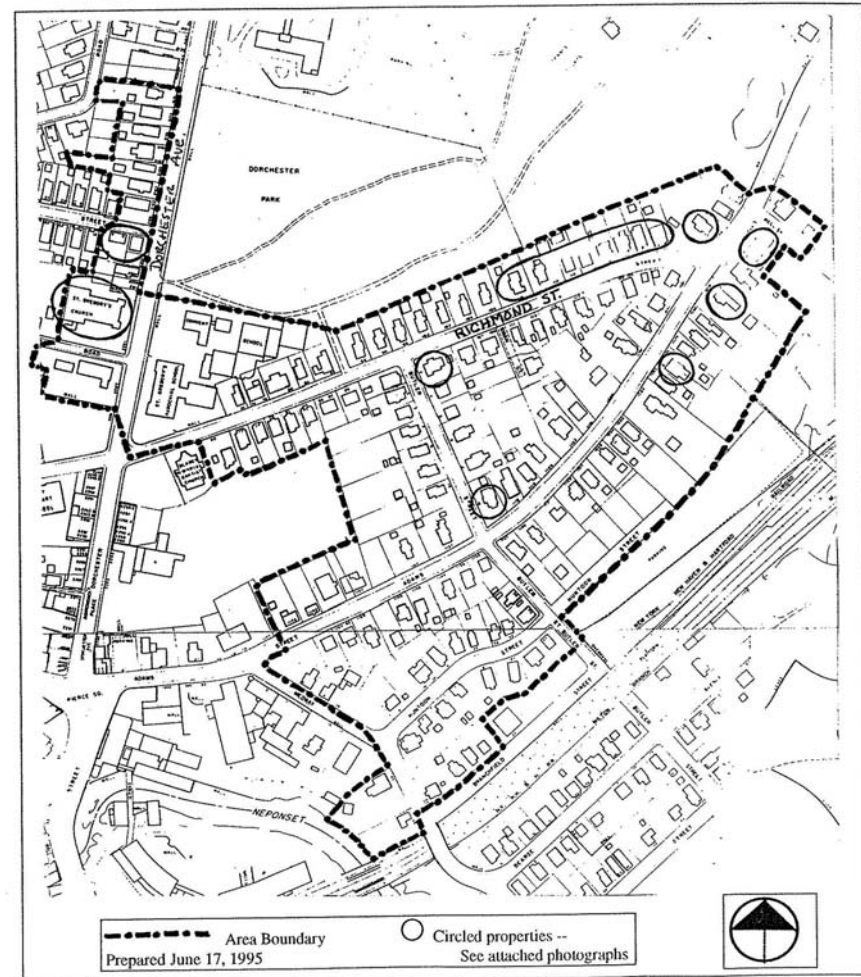
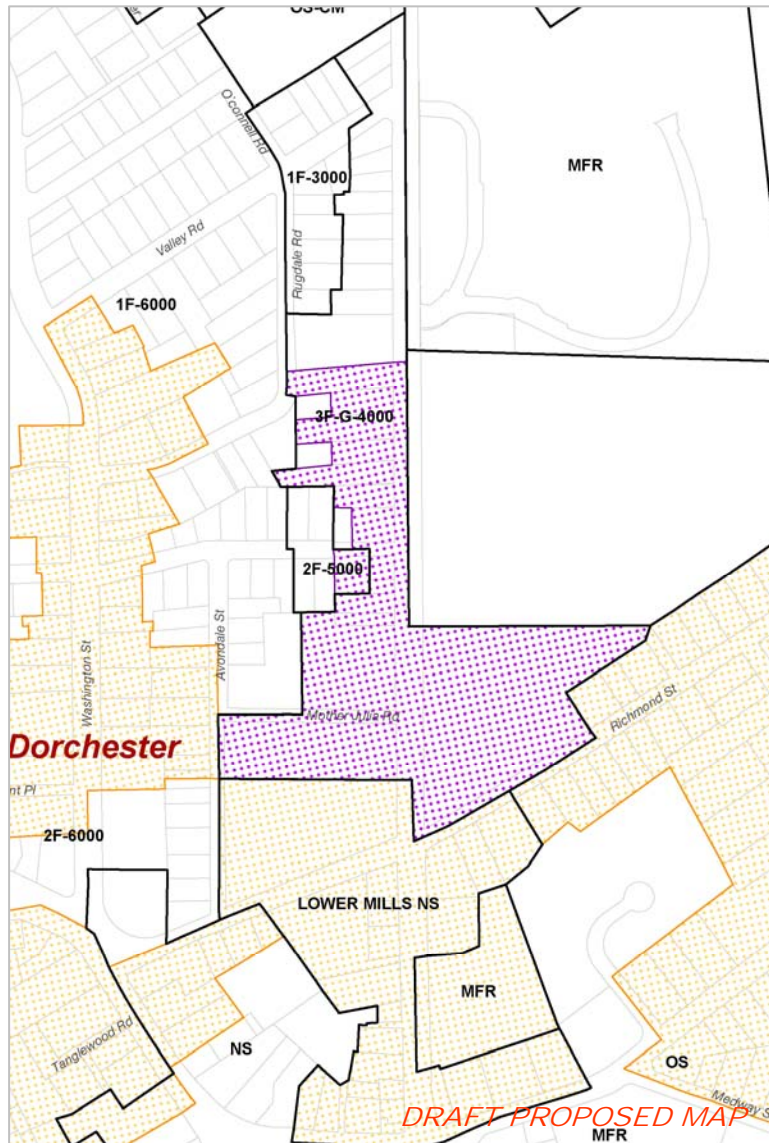
St. Mark's NDOD



Peabody Sq NDOD



Lower Mills East NDOD



Next Meetings

AG Meeting #7—October 19th

AG Meeting #8—November 16th

AG Meeting #9—December 21st

WEBSITE: www.dotavzoning.org

BRA ALERTS: www.bostonredevelopmentauthority.org

BRA ZONING INFO:

www.bostonredevelopmentauthority.org/zoning/zoning.asp