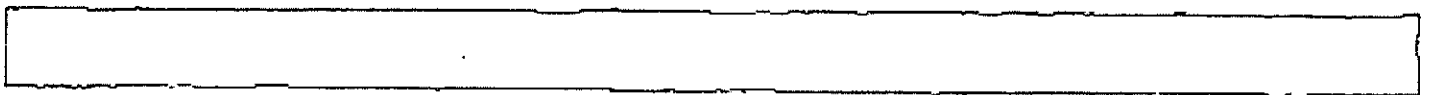
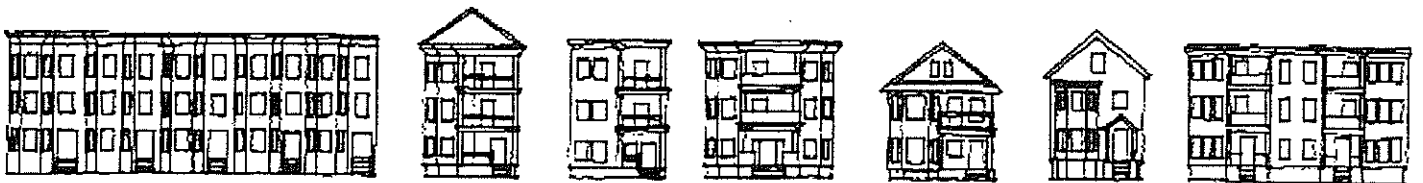
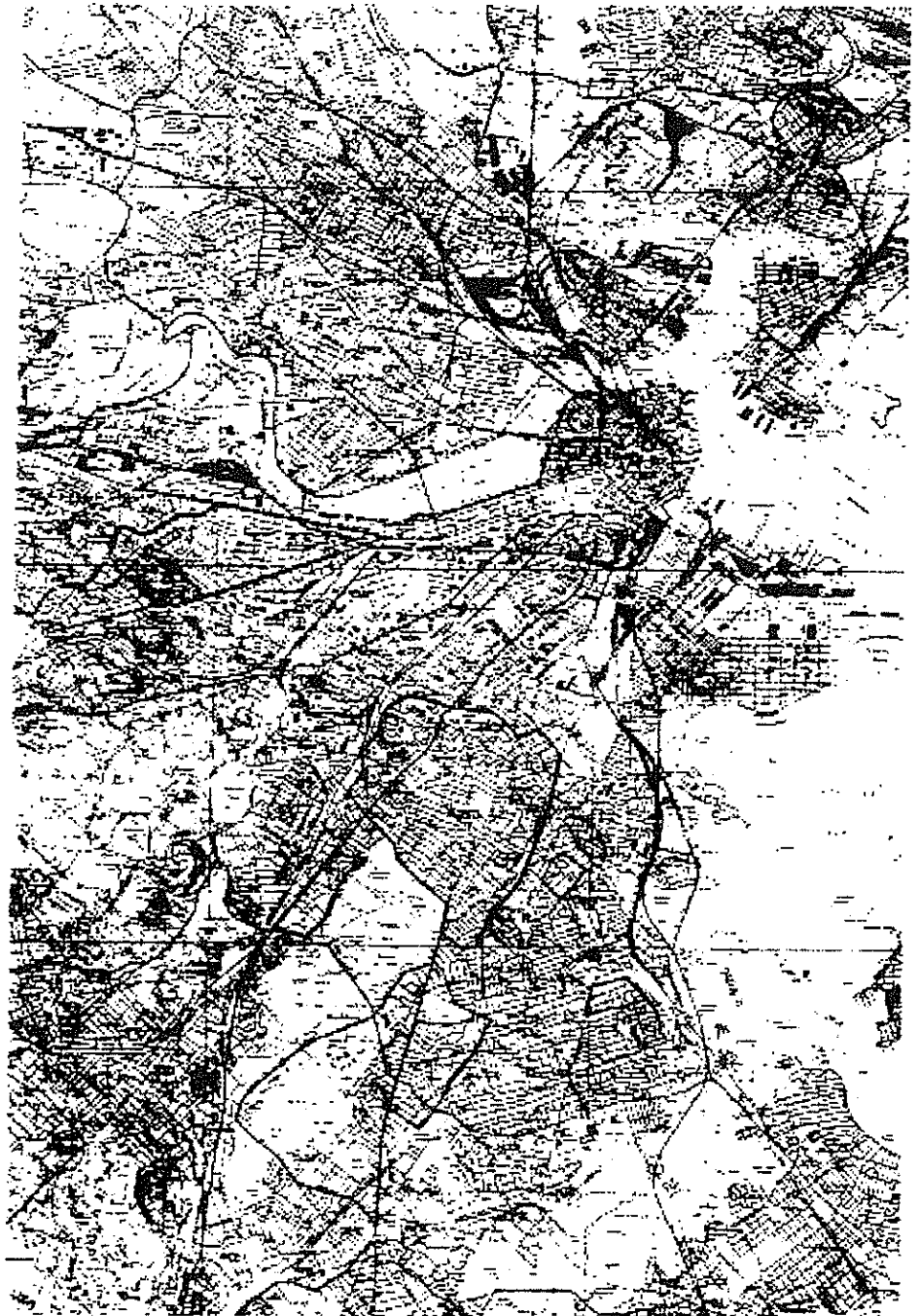


A
PATTERN
BOOK
OF
BOSTON
HOUSES



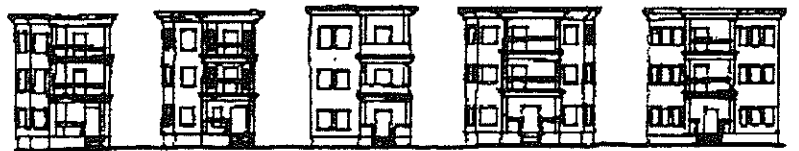
NEIGHBORHOODS WITH THE
HIGHEST NUMBER OF VACANT
CITY-OWNED LOTS COMPRISE THE
BULK OF THE STUDY AREA.



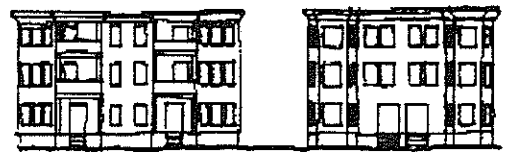
TWO FAMILY



THREE DECKER



SIX FAMILY



ROWHOUSE



ROOF CAP



GABLE FRONT



HIPPED ROOF



- PITCHED ROOF
- OVERHANG
- DECORATIVE MOLDING UNDER EAVES

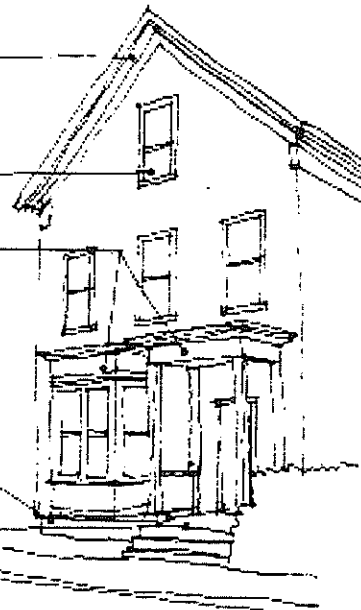
- WINDOWS
- DOUBLE HUNG

- BAY AND PORCH
- ONE OR TWO STORIES
- ATTACHED TO FACADE
- MANY VARIATIONS

- SILL
- USUALLY WOOD SIDING

- BASE
- STONE OR BRICK

- STEPS
- STONE, BRICK, WOOD, OR CONCRETE
- MAY NOT HAVE RAIL



- PITCHED ROOF
- DEEP OVERHANG
- DECORATIVE MOLDING UNDER EAVES AND AT BASE OF ROOF EAP*
- MAY BE TIPPED

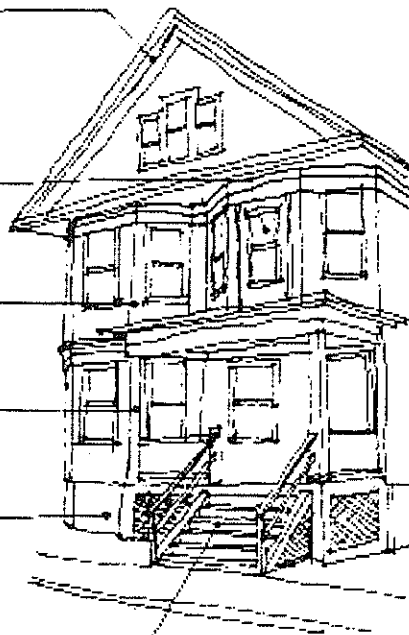
- WINDOWS
- DOUBLE HUNG
- DECORATIVE VARIETIES APPEAR

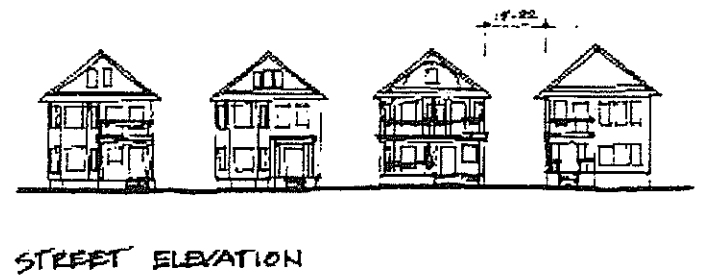
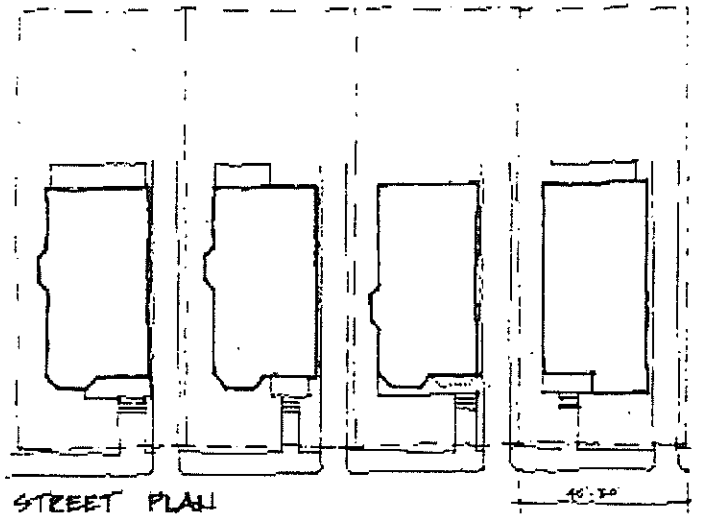
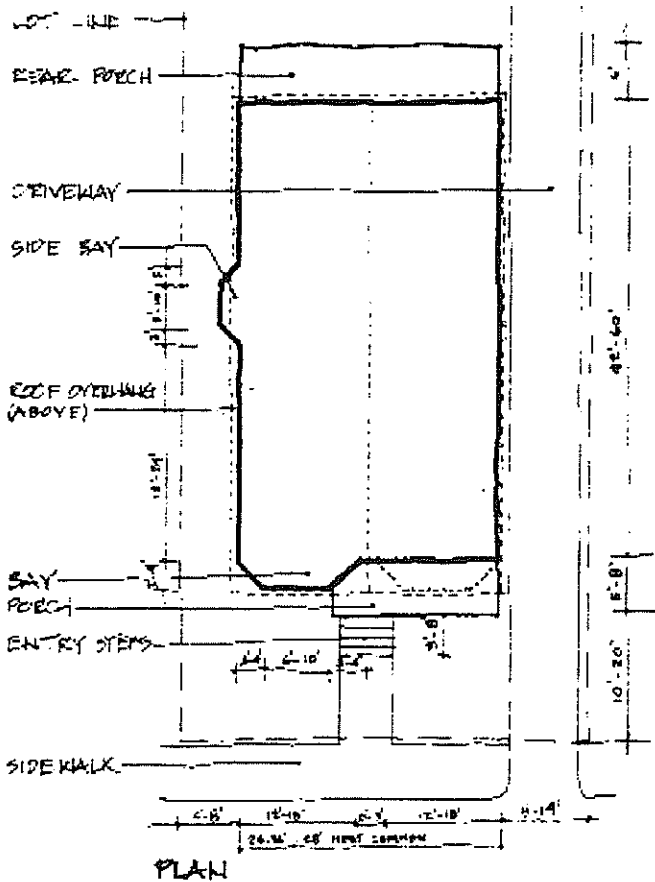
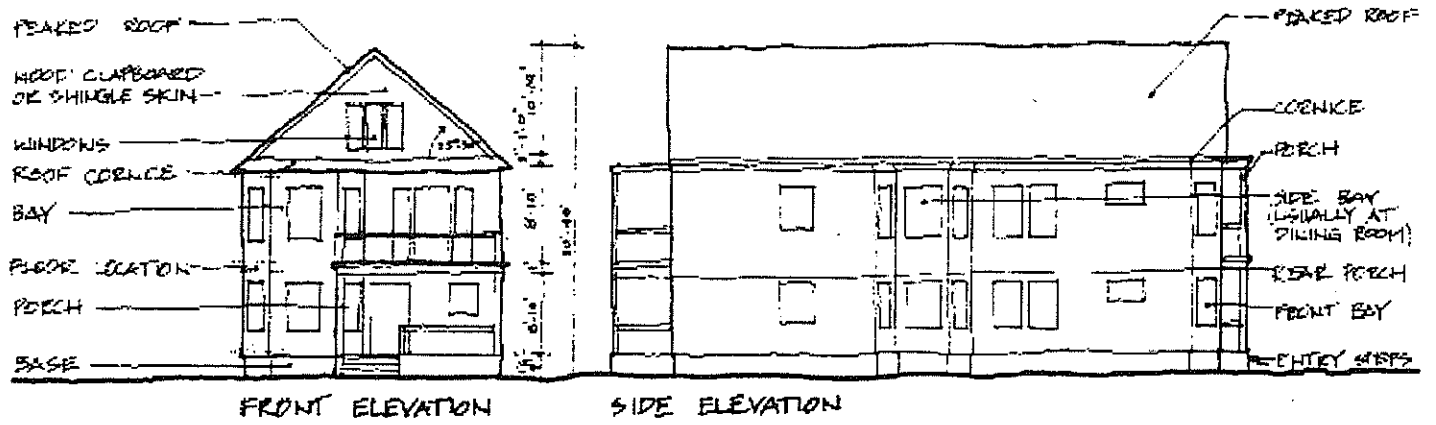
- BAY
- SINGLE OR DOUBLE UNDER OVERHANG, SOME FLAT

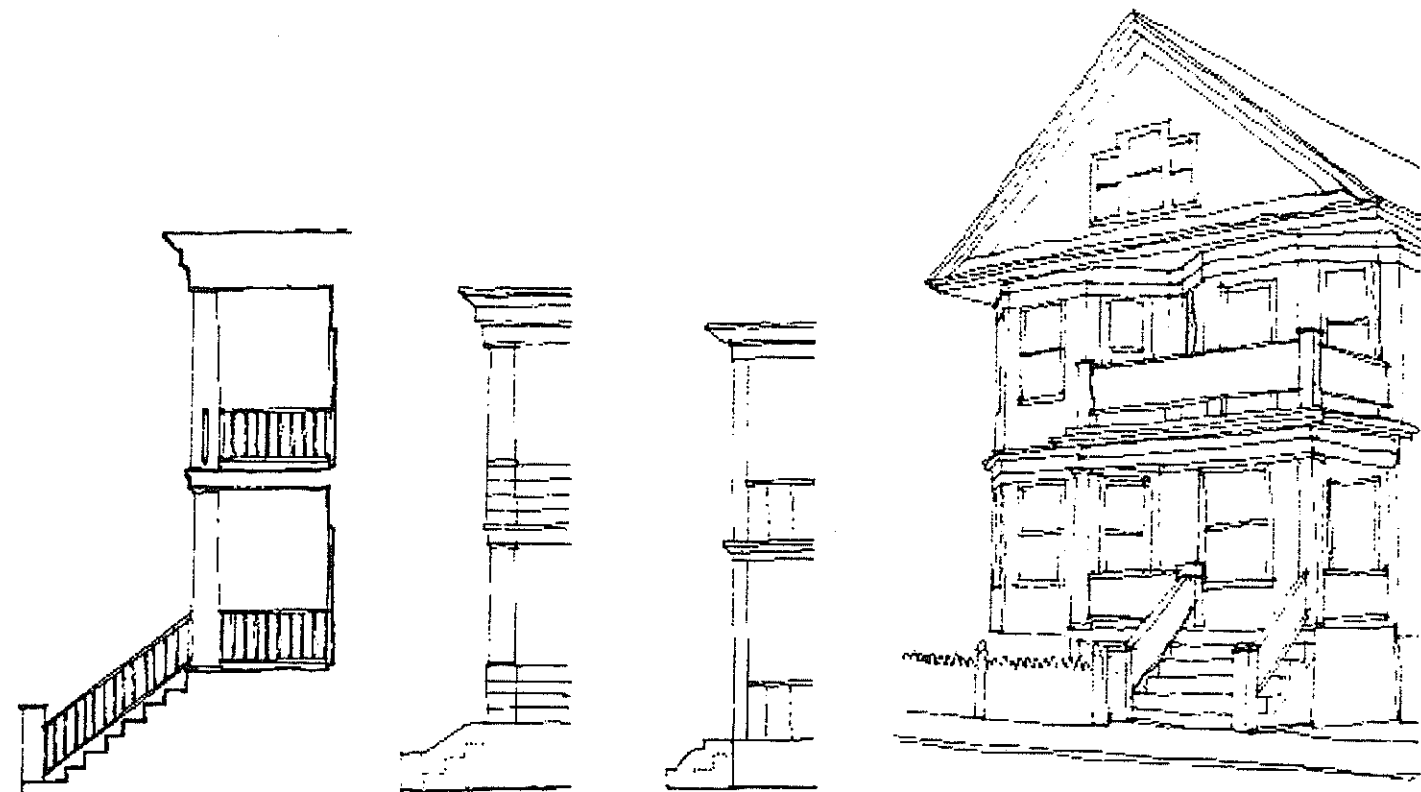
- PORCH
- ONE OR TWO STORIES
- MANY VARIETIES

- BASE
- STONE OR BRICK
- UNDER PORCH MAY HAVE LATTICE PANEL

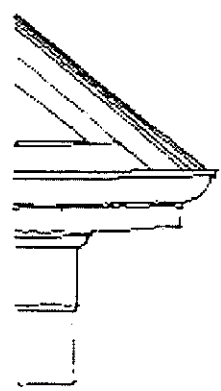
- STEPS
- WOOD MOST FREQUENT



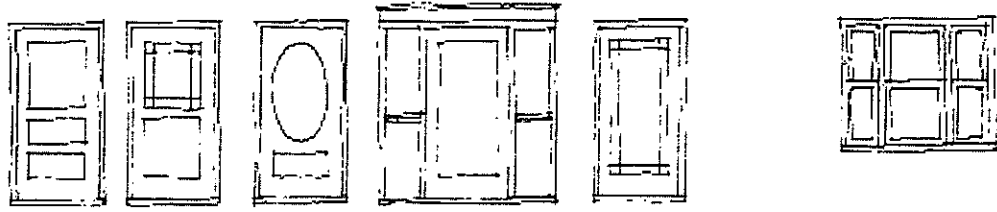
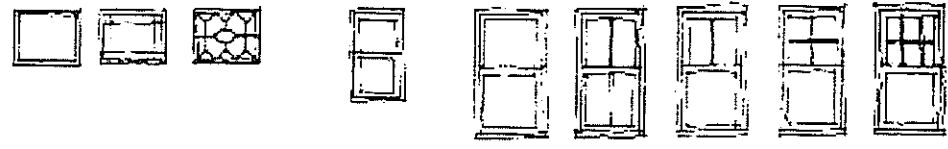




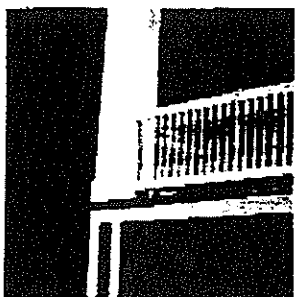
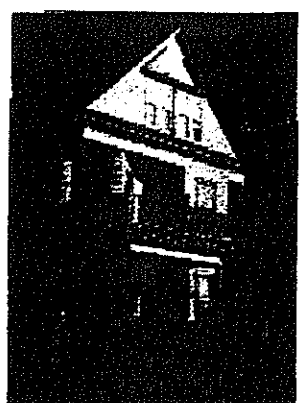
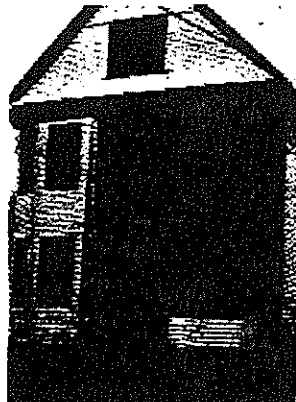
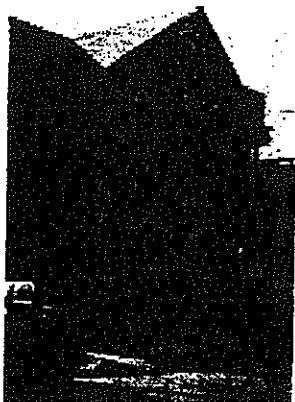
PORCH AND STAIR DETAILS

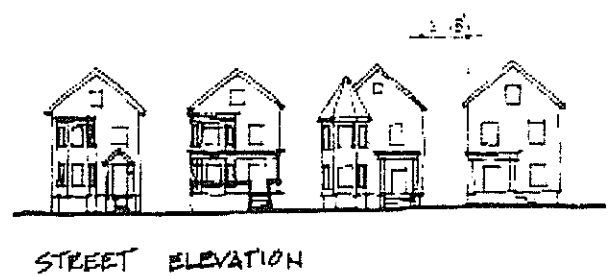
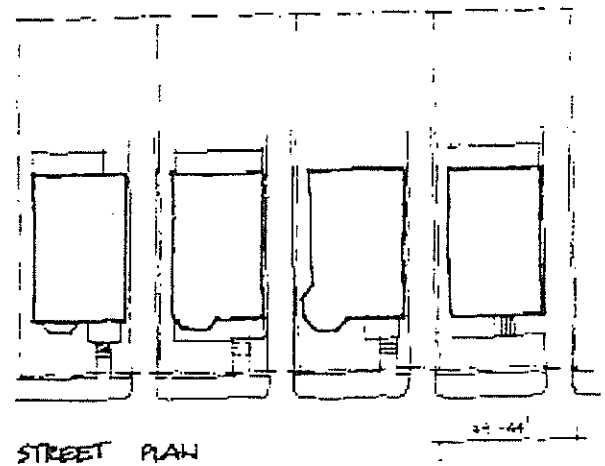
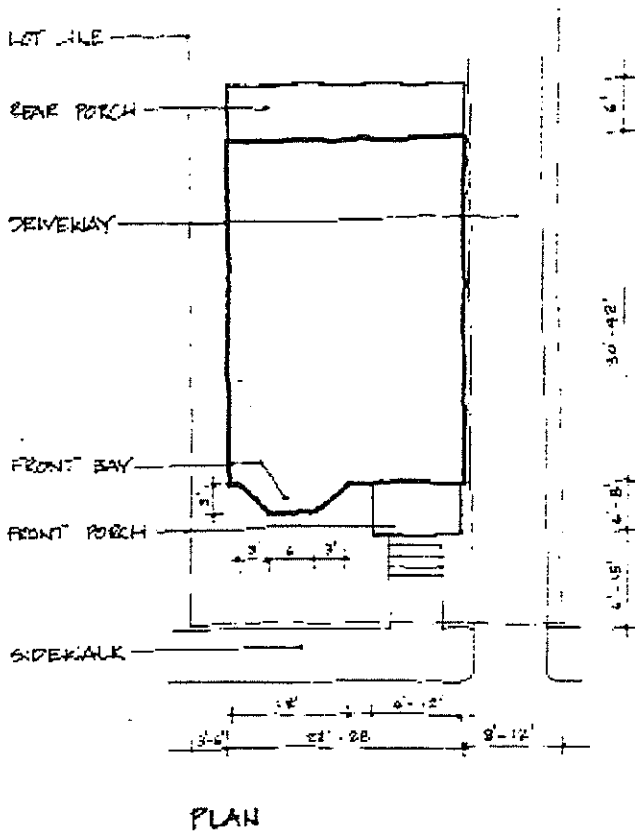
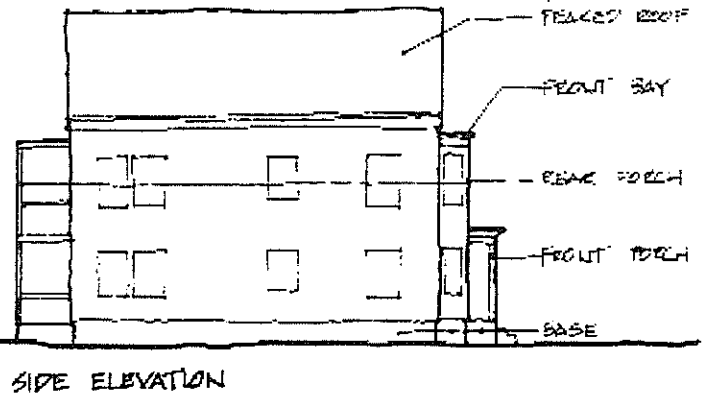
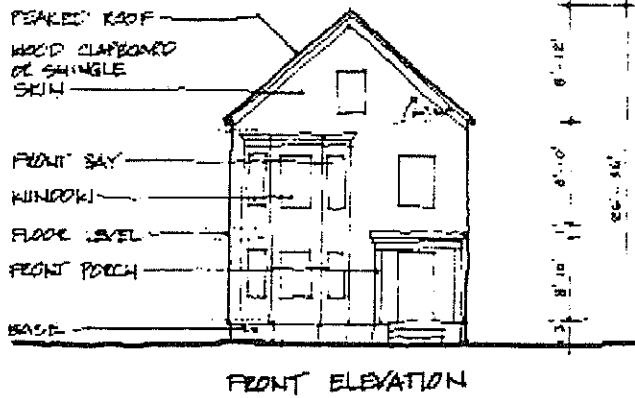


CORNICE / ROOF DETAIL



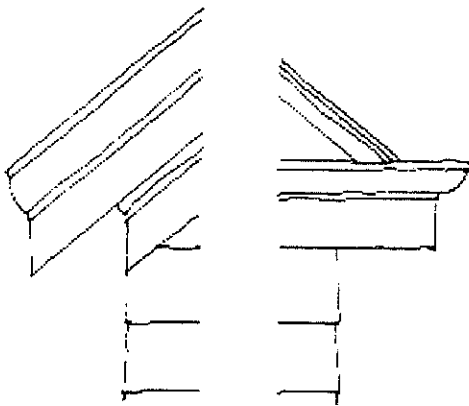
DOOR AND WINDOW DETAILS



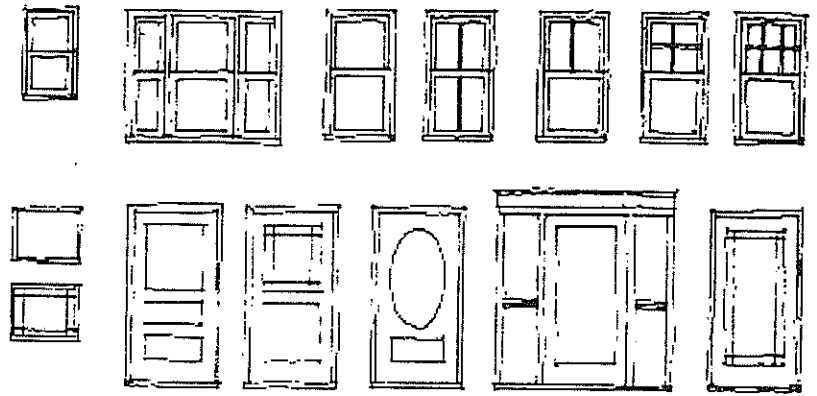




PORCH AND STAIR DETAILS

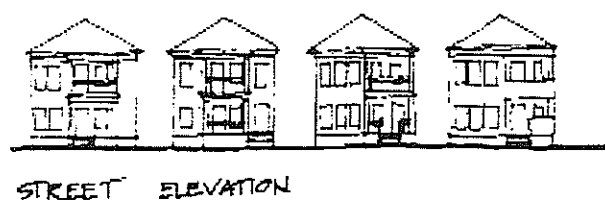
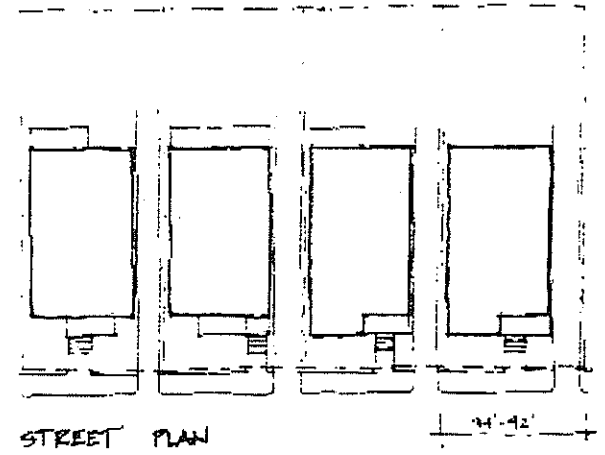
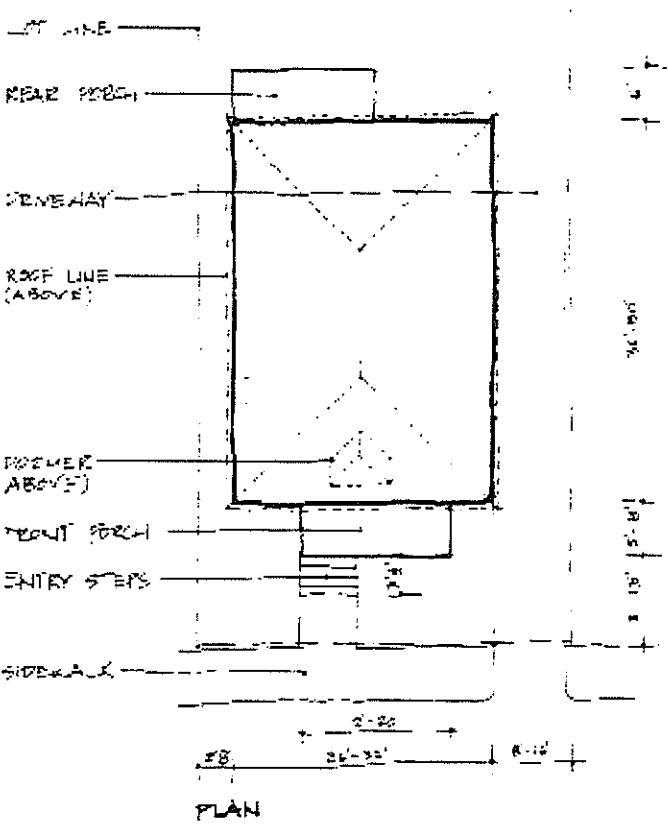
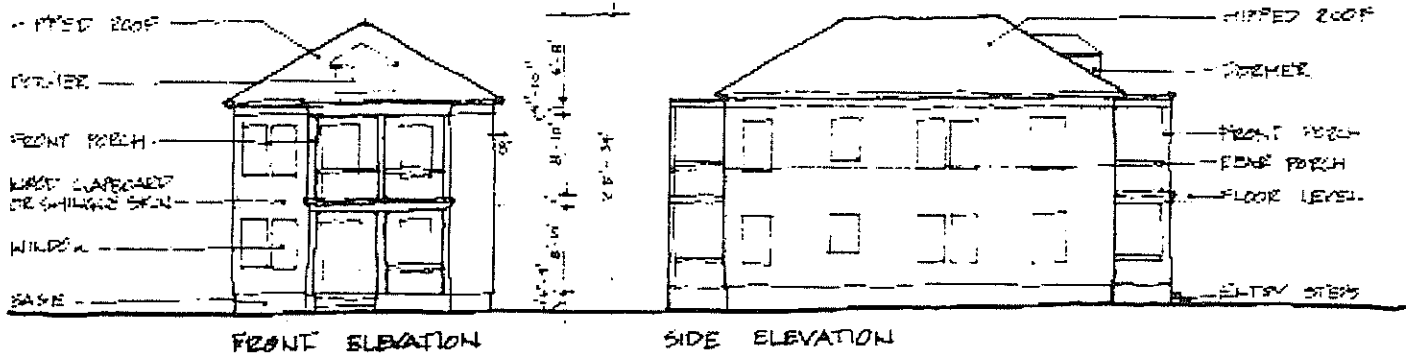


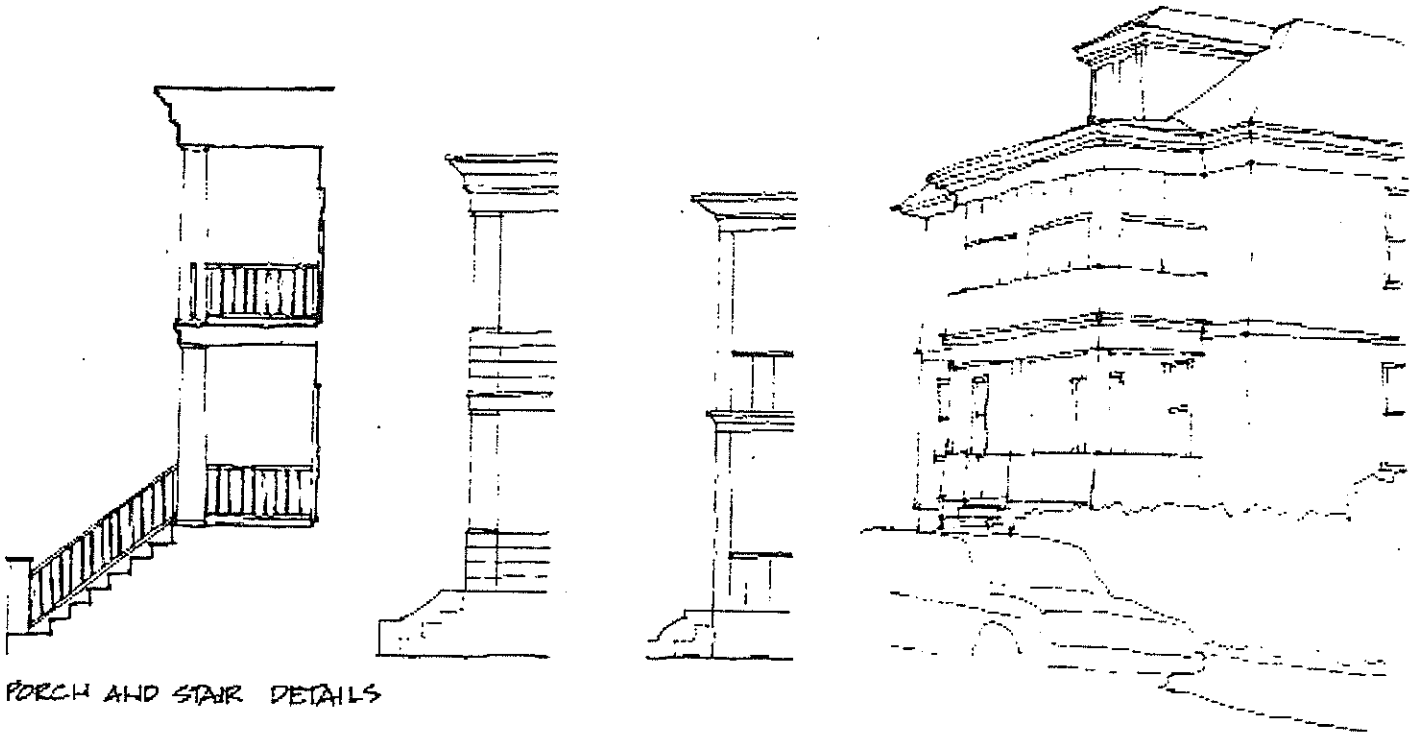
CORNICE/ROOF DETAILS



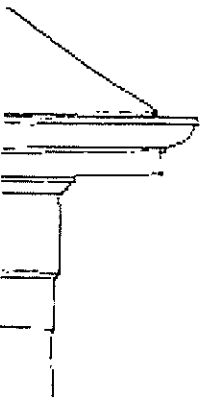
DOOR AND WINDOW DETAILS



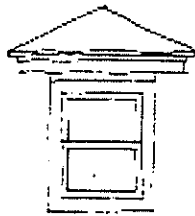




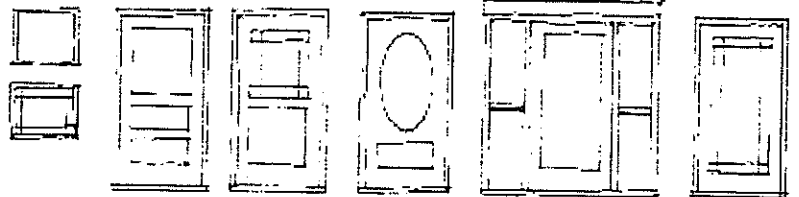
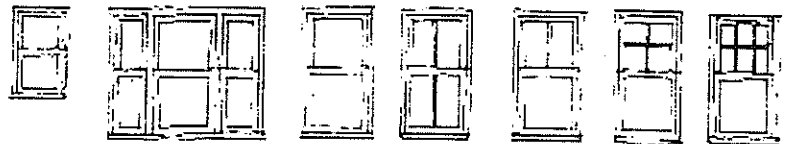
PORCH AND STAIR DETAILS



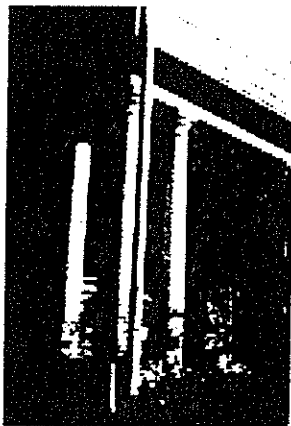
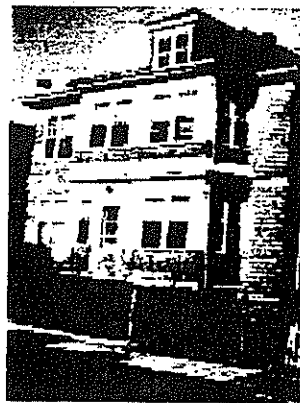
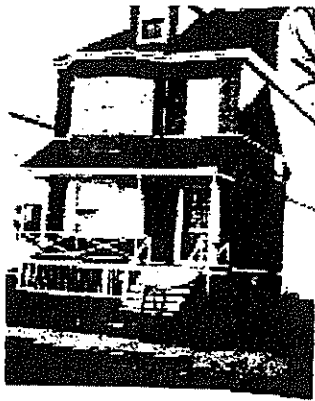
ROOF DETAIL



DORMER



DOOR AND WINDOW DETAILS



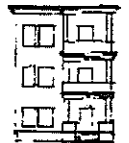
SINGLE BAY NARROW



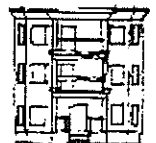
DOUBLE BAY NARROW



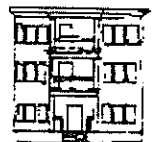
FLAT FRONT NARROW



DOUBLE BAY WIDE



FLAT FRONT WIDE



SHUTTERS

- MOST ALWAYS DOUBLE-HUNG.
- MAY HANG FROM MOULDING BAND (AS SHOWN) OR FLOAT FREE ON SKIN.
- SMALL, FIXED STAINED GLASS PATTERNED WINDOWS FREQUENTLY OCCUR AT STAIRS AND IN DINING ROOMS.

DECORATIVE MOULDING

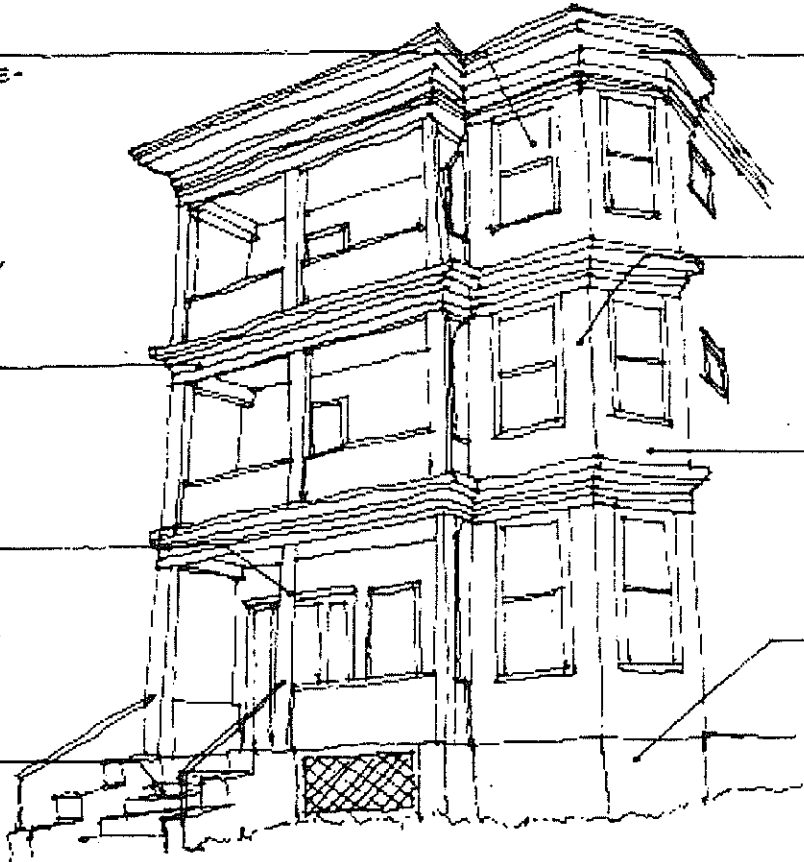
- MANY VARIETIES AND CONFIGURATIONS.
- MAY WRAP AROUND ENTIRE BUILDING, APPEAR ON FRONT ONLY, OR BE ABSENT.

PORCH

- MANY VARIETIES AND CONFIGURATIONS.
- MAY ENGAGE CORNICE OR MAY END AT THIRD FLOOR.
- FEW 3 DECKERS ARE WITHOUT

STEPS

- ALWAYS PRESENT
- MAY BE WOOD, STONE, BRICK, OR CONCRETE.



CORNICE

- PRESENT ON ALL SIDES OF BUILDING BUT IS USUALLY MORE ELABORATE AT FRONT.
- 3 DECKER MAY ALSO BE TOPPED WITH A PITCHED, HIPPED, OR OTHER TYPE OF ROOF.

BAY

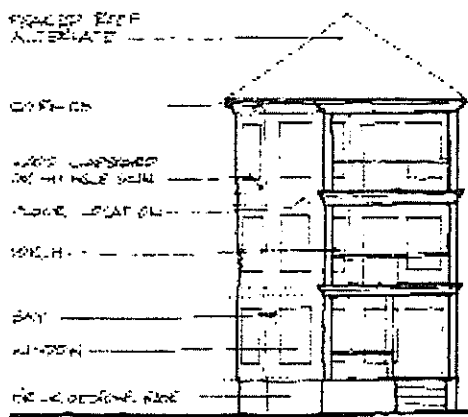
- USUALLY 3 SIDED BUT MAY BE 2 SIDED. ONE OR TWO BAYS MAY APPEAR ON FRONT AND SOMETIMES ON SIDE. SOME 3 DECKERS HAVE FLAT, BAYLESS FRONTS.

SKIN

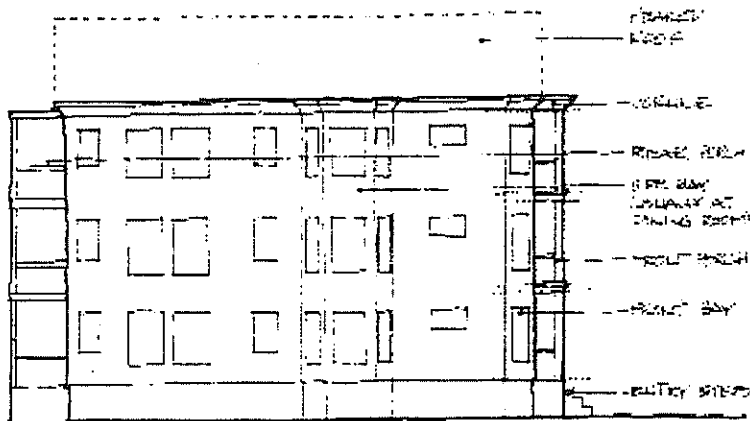
- USUALLY WOOD CLAP BOARD OR SHINGLE THE ORIGINAL FACING MATERIAL.
- MANY HAVE BEEN RE-FACED WITH VINYL, ALUMINUM, OR OTHER MATERIALS.

BASE

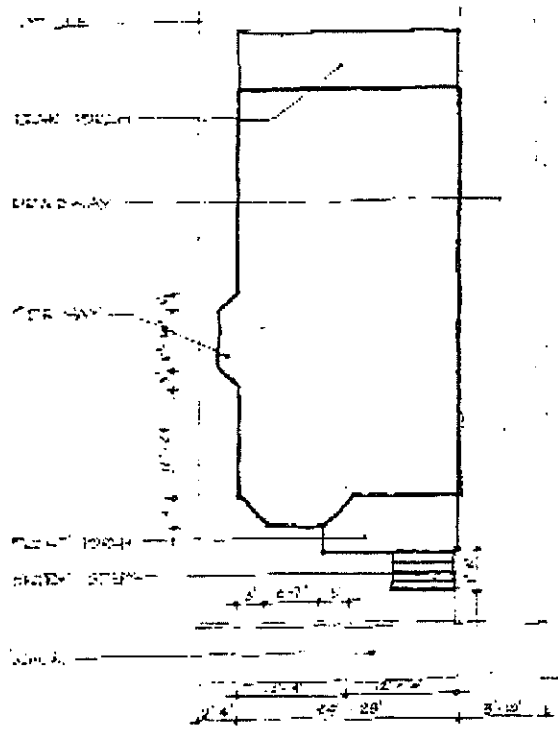
- USUALLY STONE OR BRICK.
- BASE UNDER PORCH MAY HAVE LATTICE PANELS.
- ALWAYS PRESENT



FRONT ELEVATION



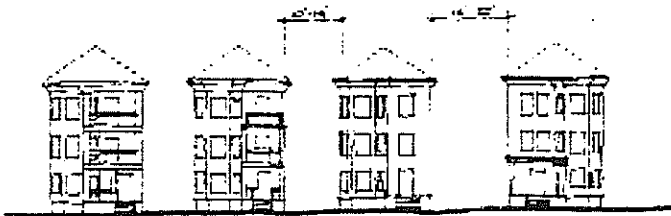
SIDE ELEVATION



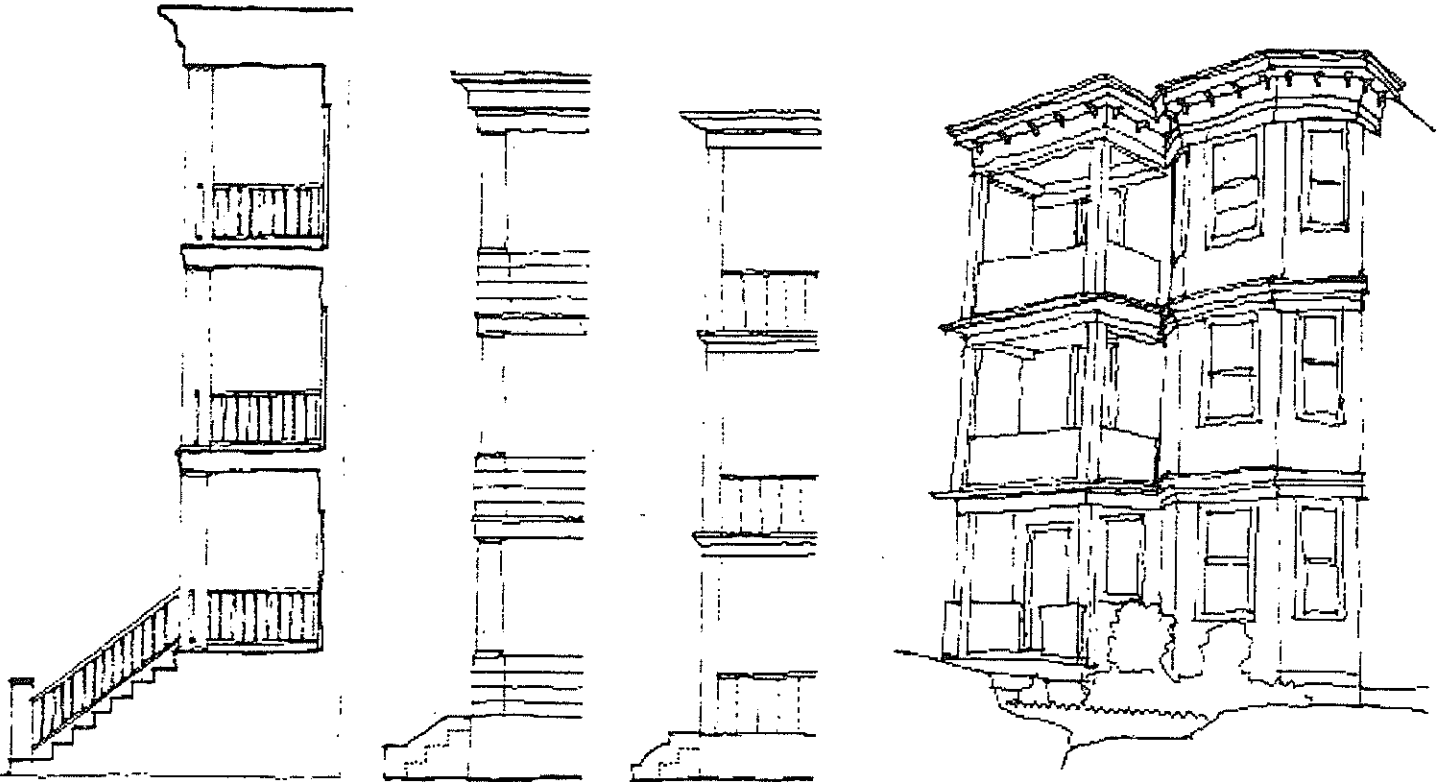
PLAN



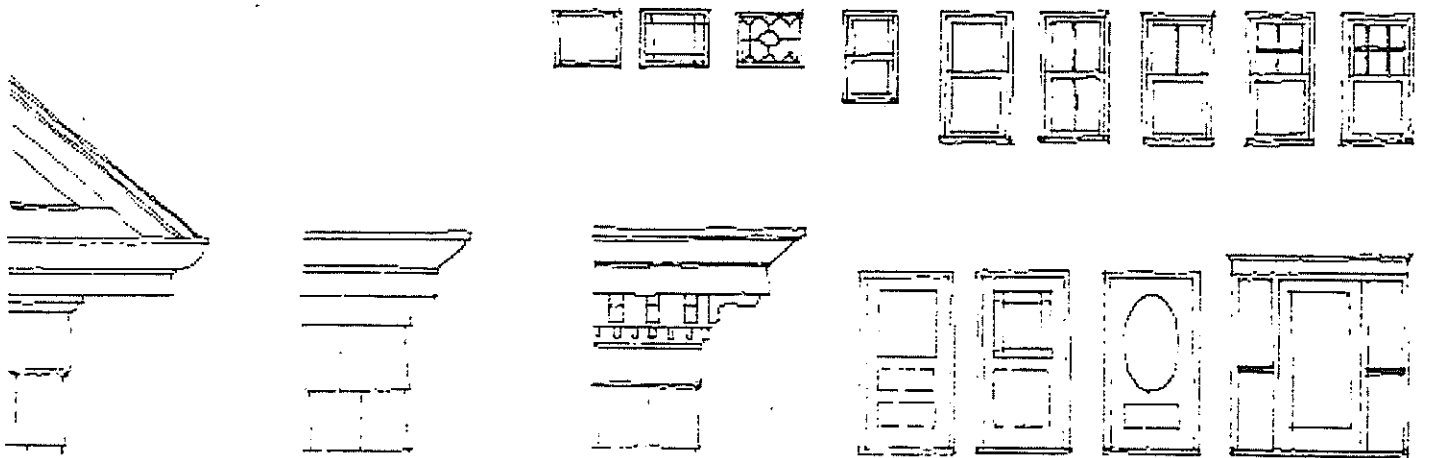
STREET PLAN



STREET ELEVATION

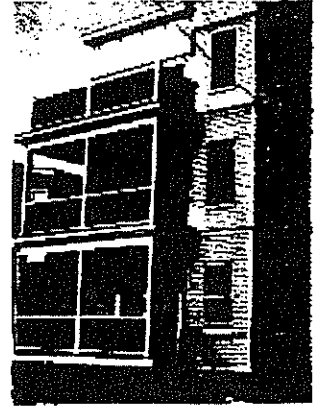
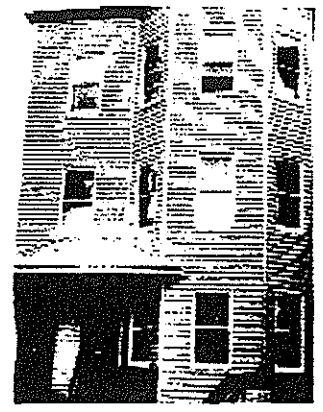


PORCH AND STAIR DETAILS



CORNICE DETAILS

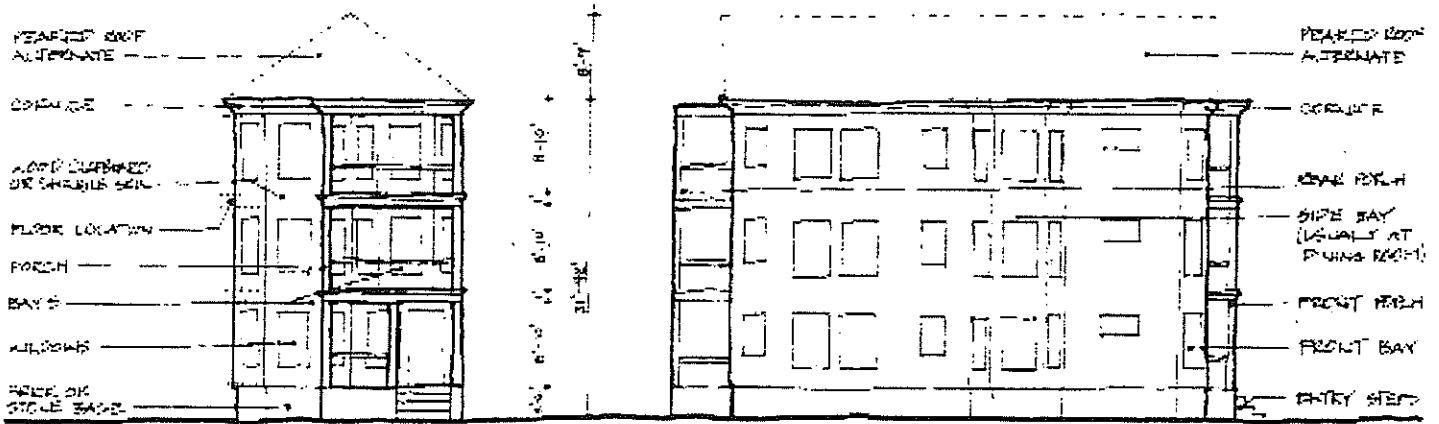
DOOR AND WINDOW DETAILS



SINGLE BAY NARROW: EXAMPLES

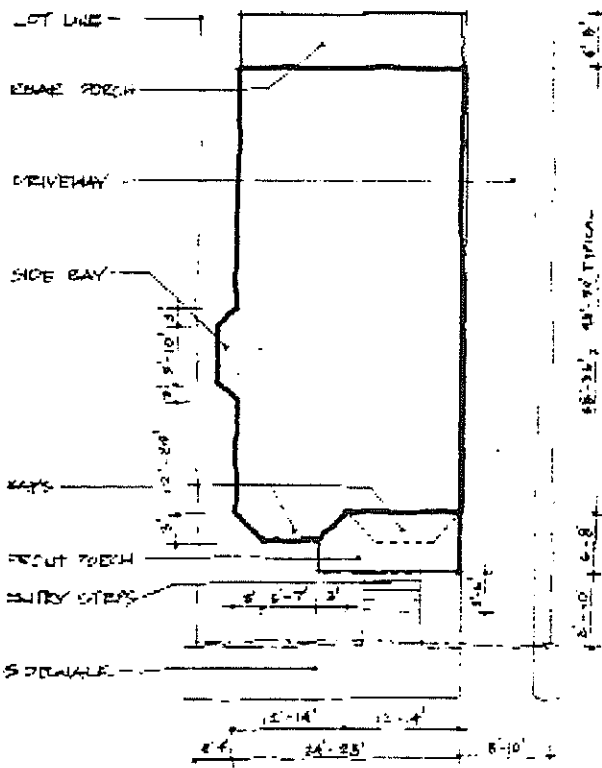
THREE DECKER

24

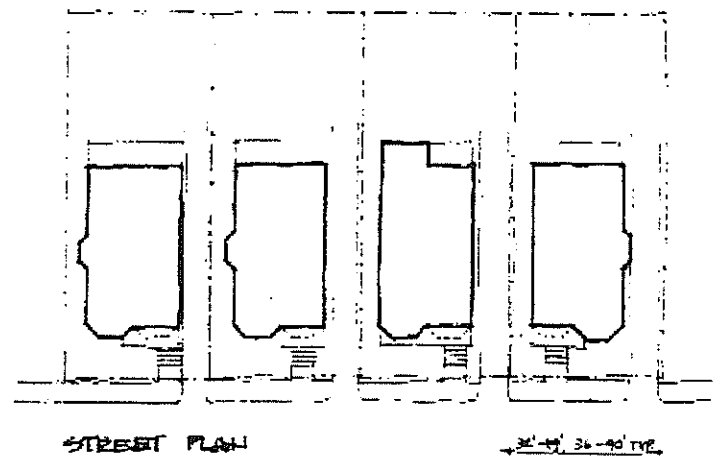


FRONT ELEVATION

SIDE ELEVATION



PLAN

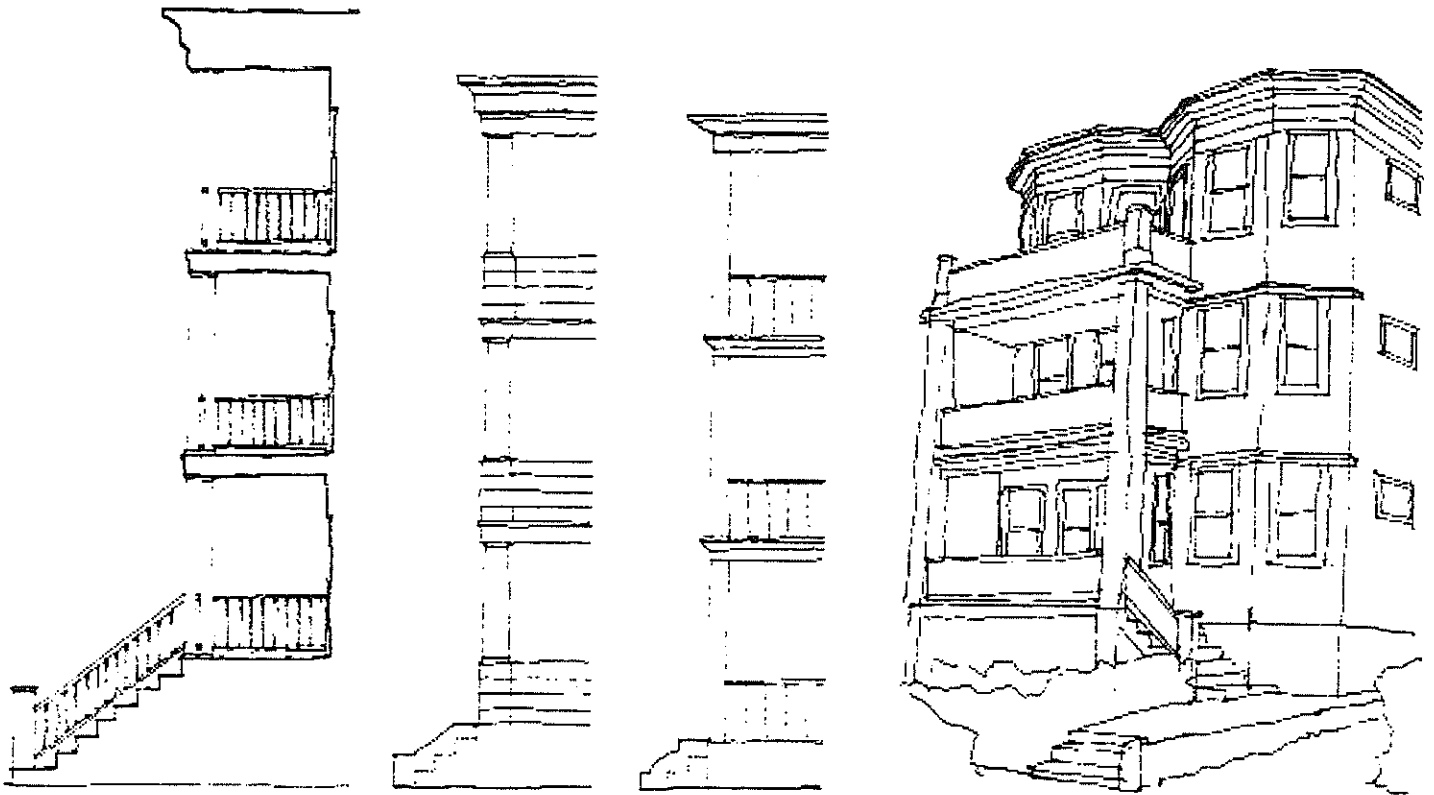


STREET PLAN

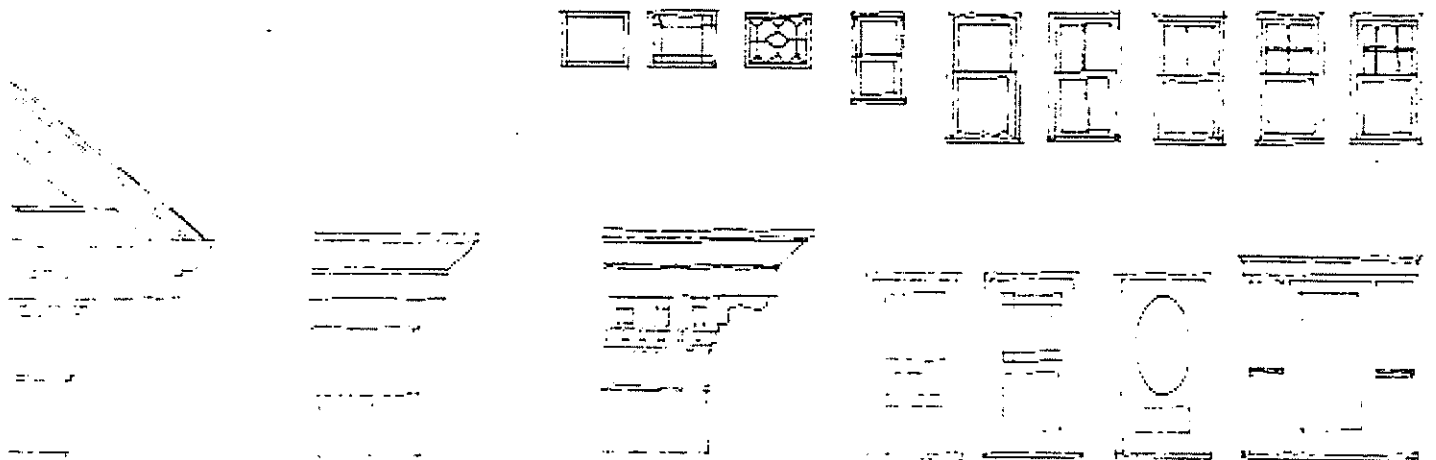
34'-0" 36'-0" TYP.



STREET ELEVATION

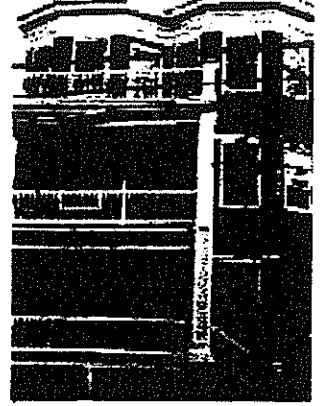


PORCH AND STAIR DETAILS



CORNICE DETAILS

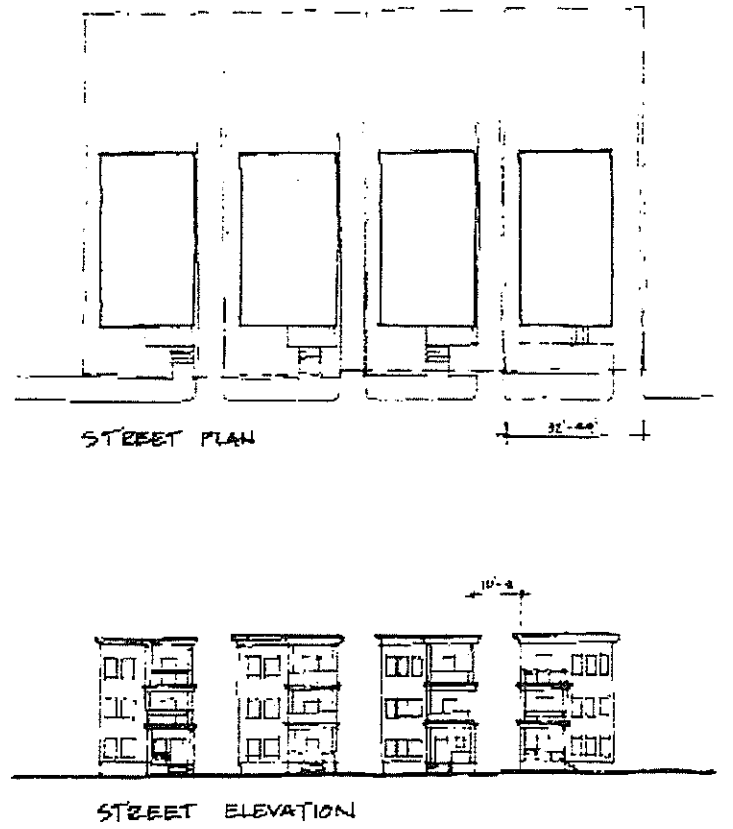
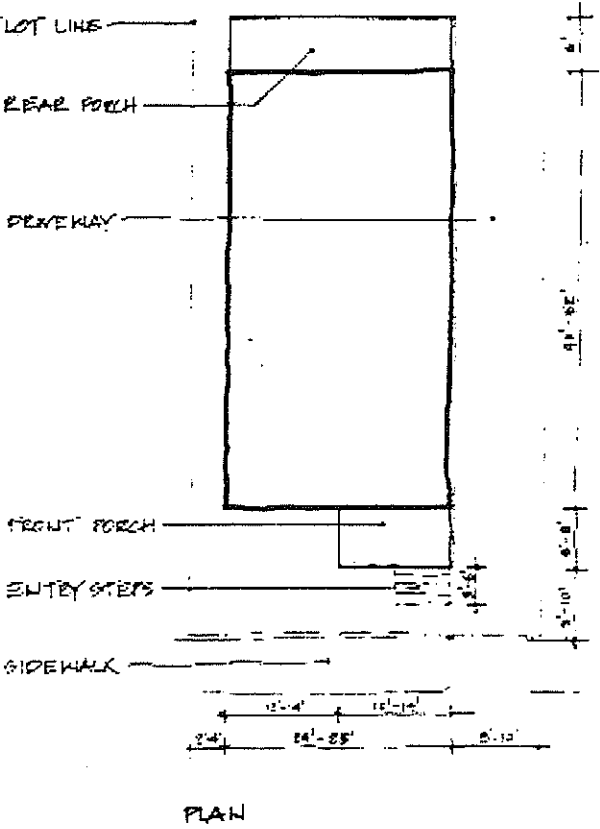
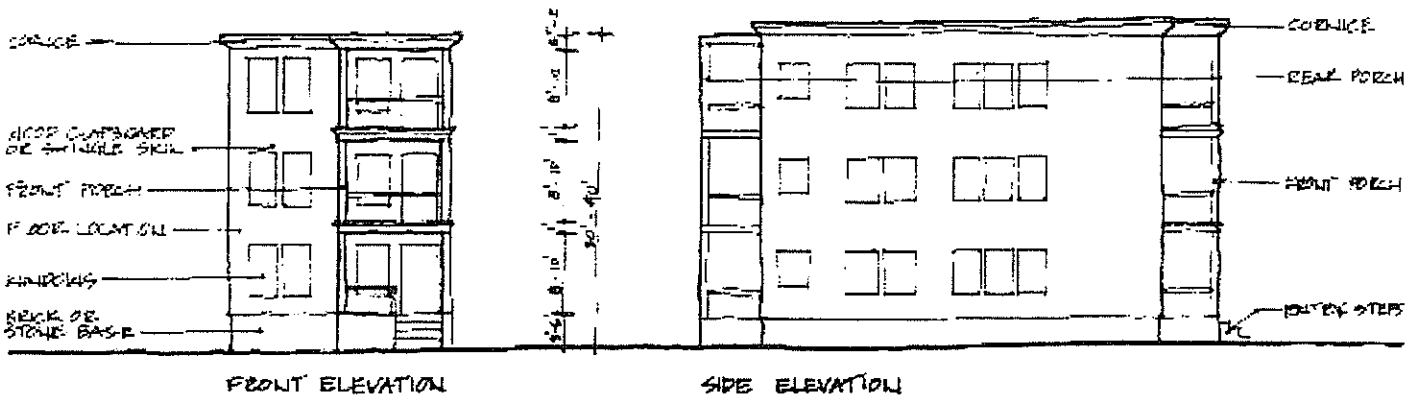
DOOR AND WINDOW DETAILS

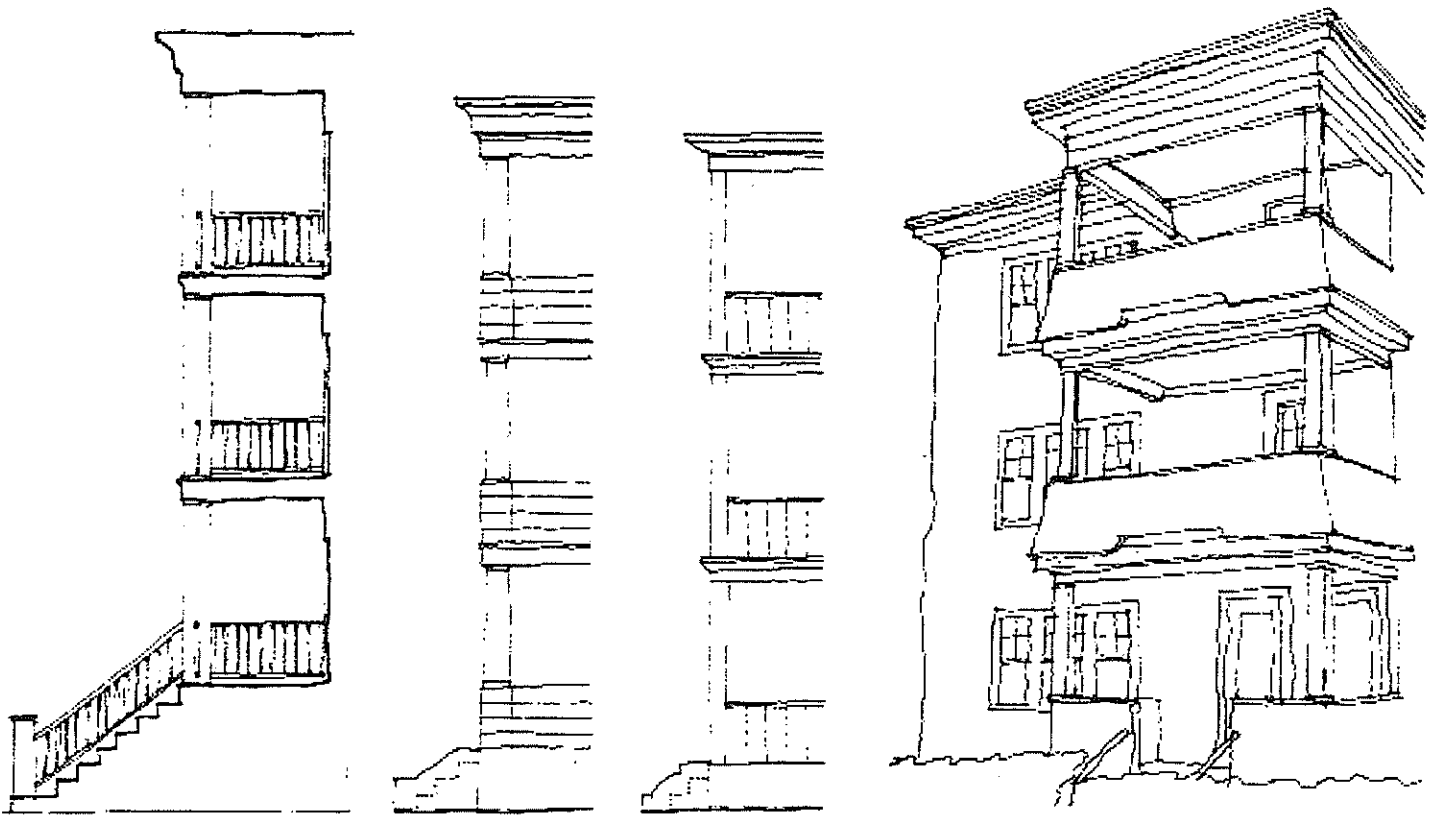


DOUBLE BAY NARROW : EXAMPLES

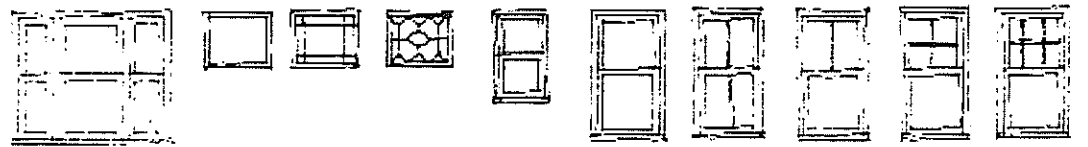
THREE DECKER

28

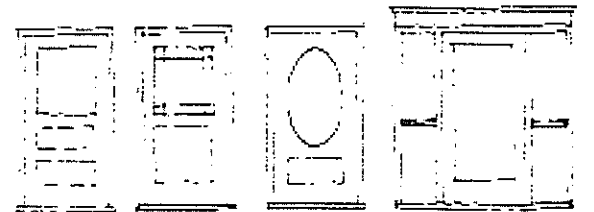




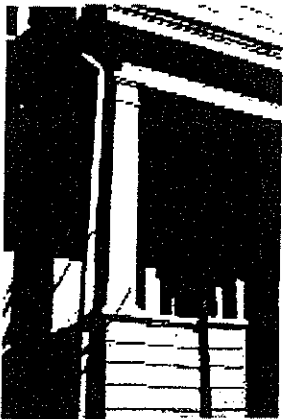
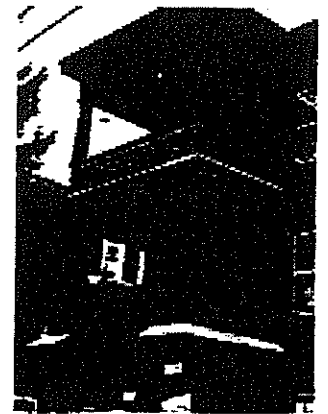
PORCH AND STAIR DETAILS

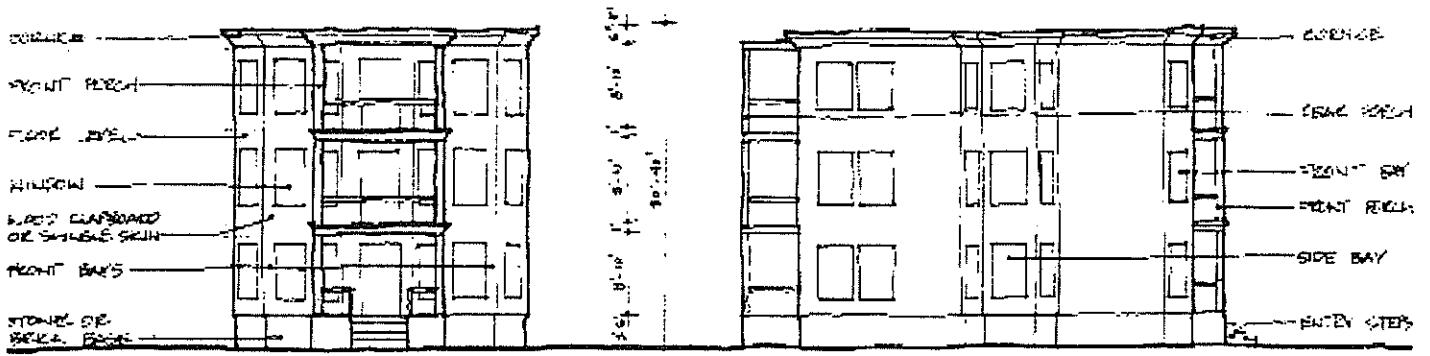


CORNICE DETAILS



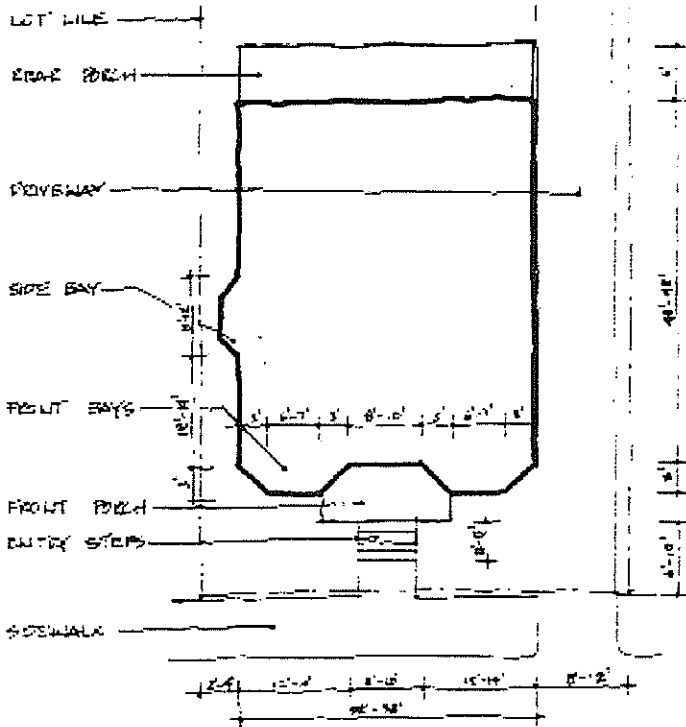
DOOR AND WINDOW DETAILS



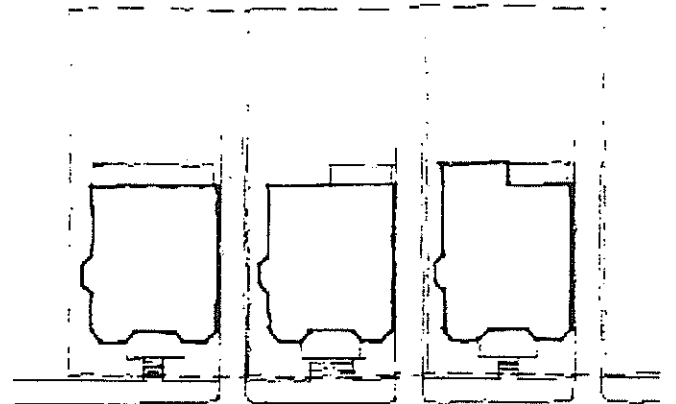


FRONT ELEVATION

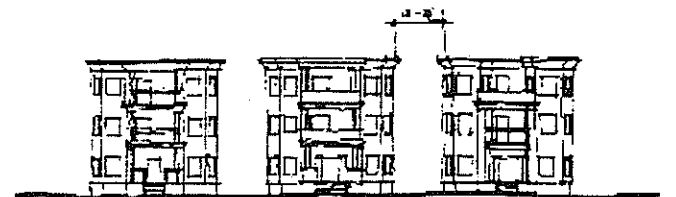
SIDE ELEVATION



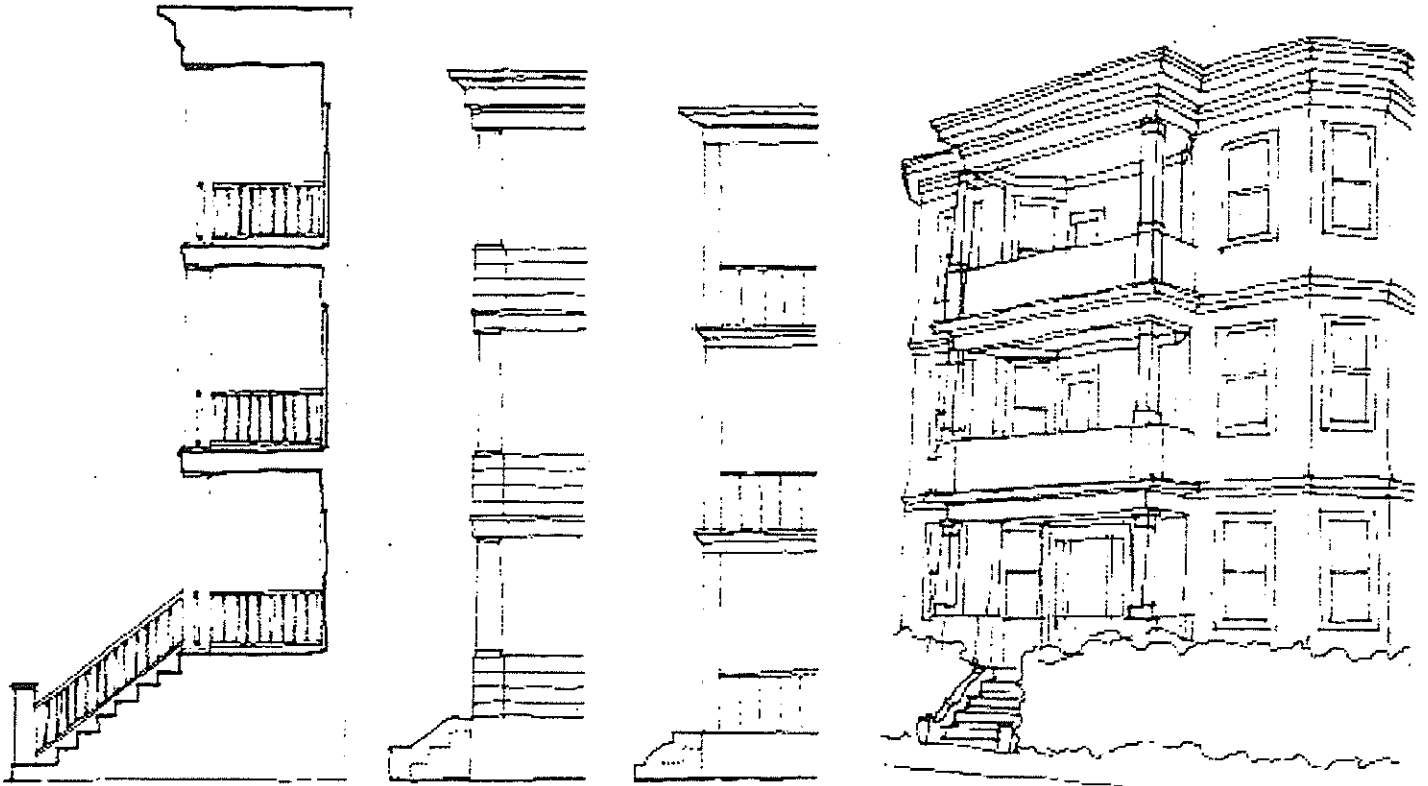
PLAN



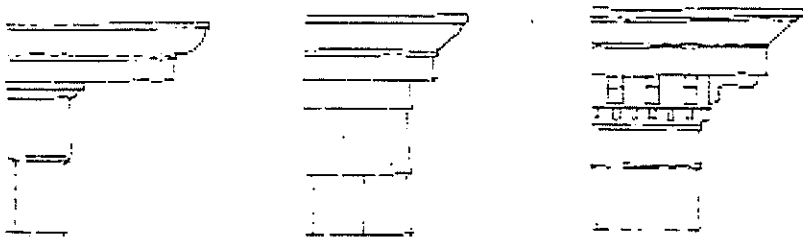
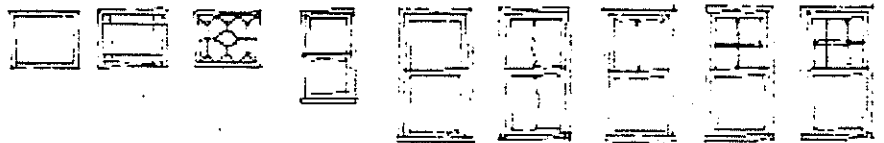
STREET PLAN



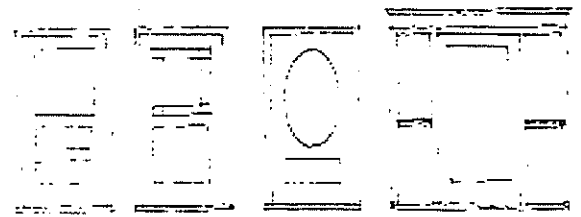
STREET ELEVATION



PORCH AND STAIR DETAILS



CORNICE DETAILS



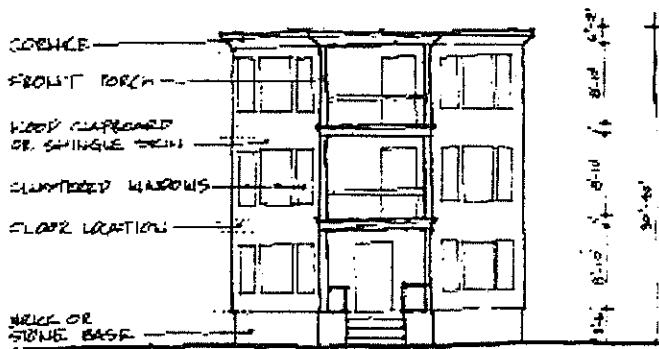
DOOR AND WINDOW DETAILS



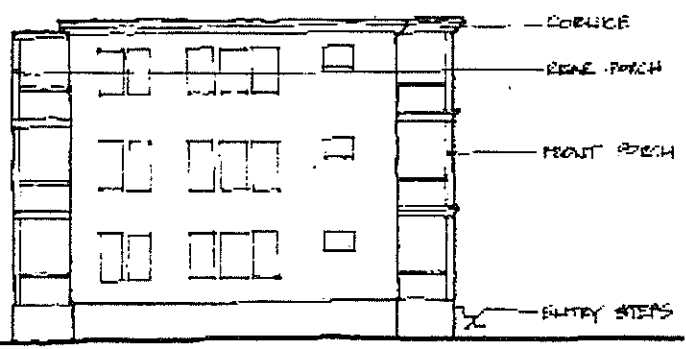
DOUBLE BAY WIDE : EXAMPLES

THREE DECKER

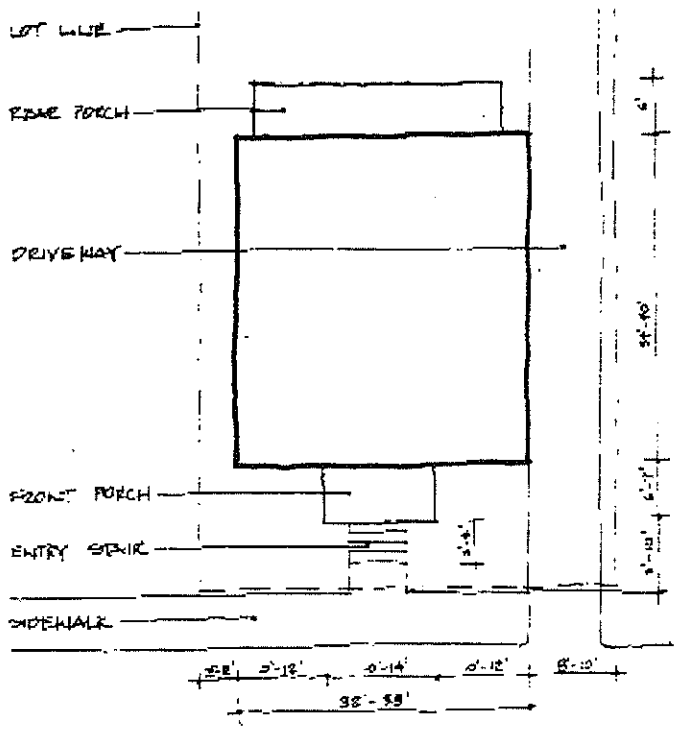
36



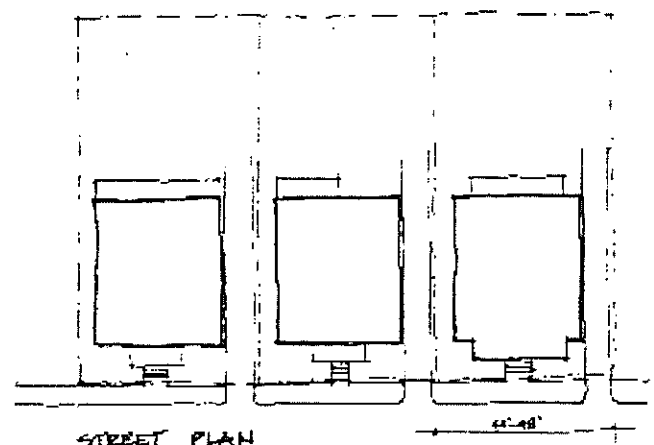
FRONT ELEVATION



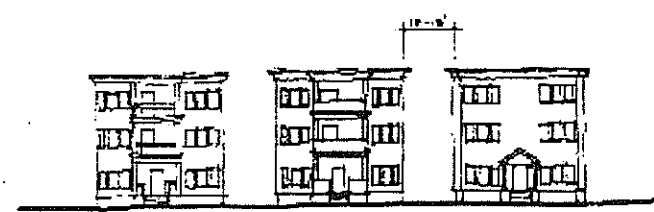
SIDE ELEVATION



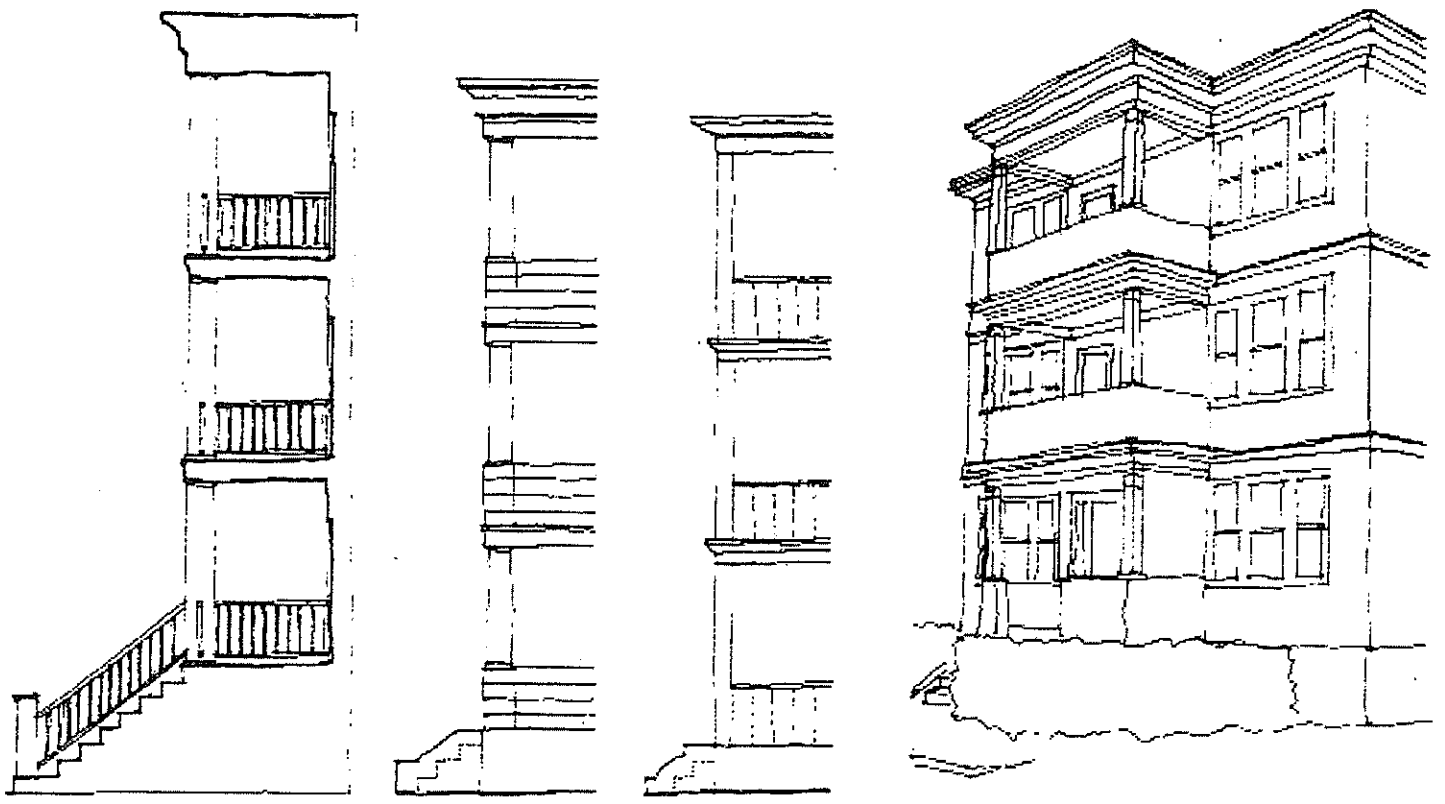
PLAN



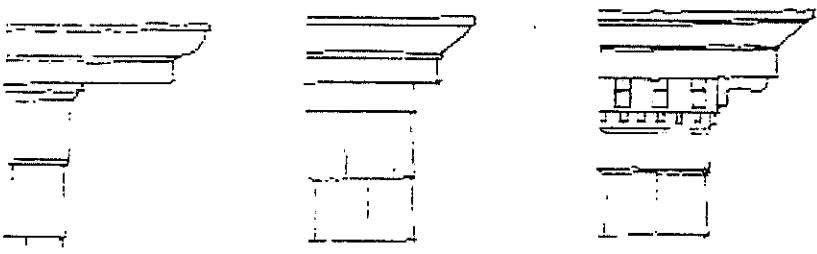
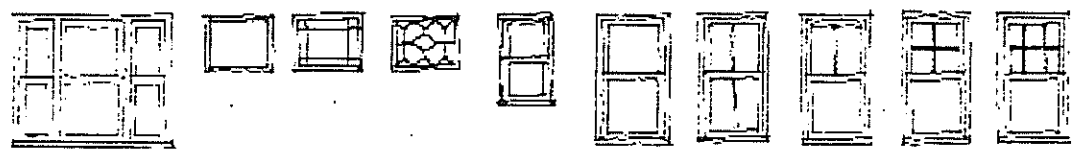
STREET PLAN



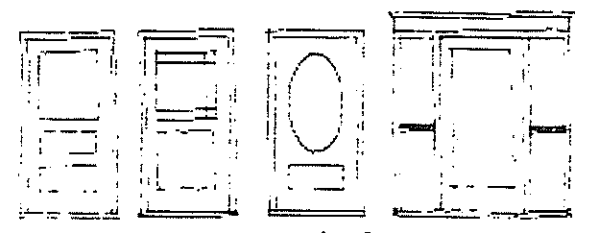
STREET ELEVATION



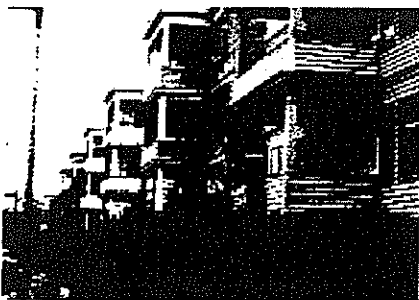
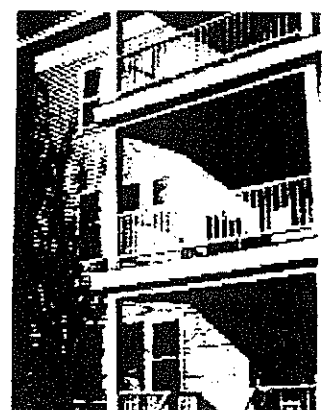
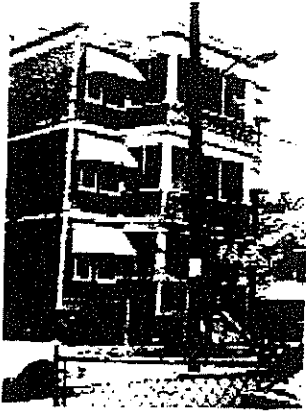
PORCH AND STAIR DETAILS



CORNICE DETAILS

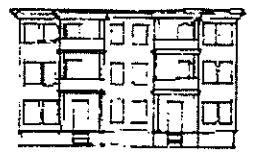


DOOR AND WINDOW DETAILS

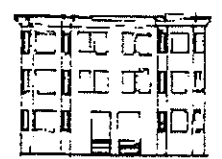


FLAT FRONT WIDE : EXAMPLES

THREE DECKER



PAIRED THREES (A)



PAIRED THREES (B)

- CORNICE
- WRAPS AROUND BUILDING BUT MAY BE MORE ELABORATE AT FRONT.
 - WILL BE OF WOOD
 - SHALL ENGAGE PORCHES

- PORCHES
- ALWAYS PAIRED
 - MANY VARIETIES
 - RAIL IS USUALLY SOLID
 - EACH PORCH MAY HAVE ITS OWN ENTRY STAIR, OR THEY MAY SHARE ONE IN THE CENTER

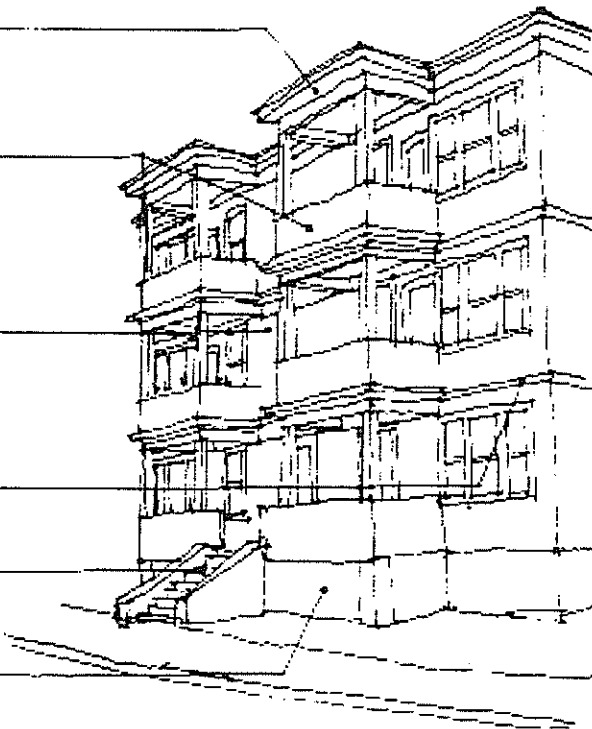
- SKILL
- USUALLY WOOD SIDING

- WINDOWS
- DOUBLE HUNG
 - OFTEN CLUSTERED INTO THREE

- DECORATIVE MOUNDING
- MAY WRAP ENTIRE BUILDING OR BE ABSENT

- STEPS
- ALWAYS PRESENT
 - MAY BE STONE, BRICK, CONCRETE OR WOOD

- BASE
- MAY BE STONE, BRICK OR LATTICE PANEL AT PORCH



- CORNICE
- MAY OCCUR AT FRONT ONLY
 - USUALLY STONE, SOMETIMES WOOD

- FACING
- USUALLY BRICK, RED OR YELLOW
 - MAY HAVE DECORATIVE STONE BANDS
 - SOMETIMES WOOD

- WINDOWS
- DOUBLE HUNG
 - OFTEN PAIRED
 - WILL FREQUENTLY HAVE STONE SILLS AND SPANDREL

- ENTRY
- SINGLE OR PAIRED

- STEPS
- BRICK OR CONCRETE OR STONE

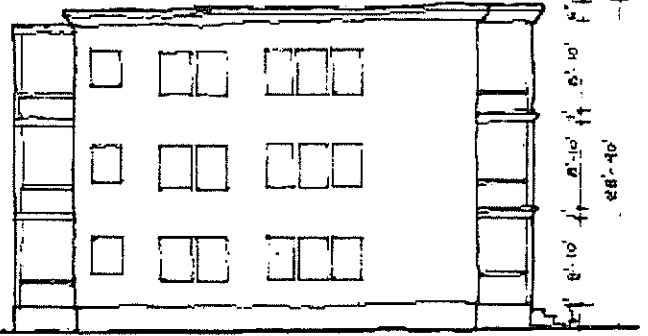
- BAYS
- 3 SIDED OR BOXED



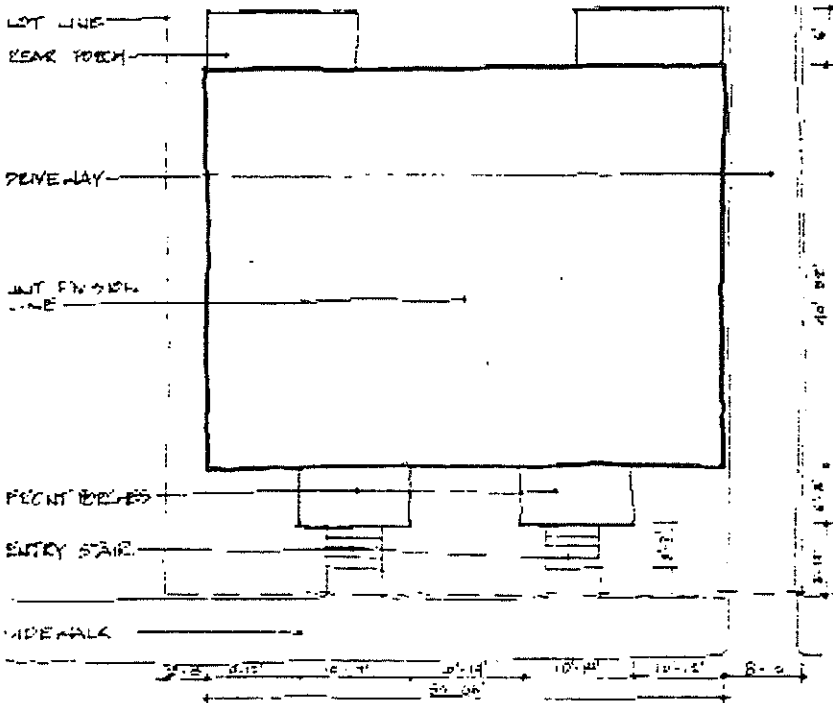


CORNICE
 CORNICES
 LANTERNED
 WINDOW
 FLOOR LOCATION
 ROOF CARPENTER
 OR SHINGLE SKIN
 ALTERNATE
 ENTRY
 WALL OR
 STOLE BASE

FRONT ELEVATION

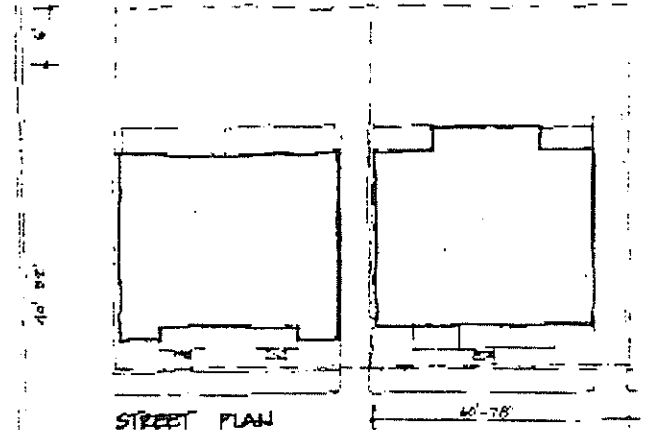


SIDE ELEVATION



LOT LINE
 REAR PORCH
 DRIVEWAY
 INT FINISH
 LINE
 FRONT PORCHES
 ENTRY STAIR
 SIDEWALK

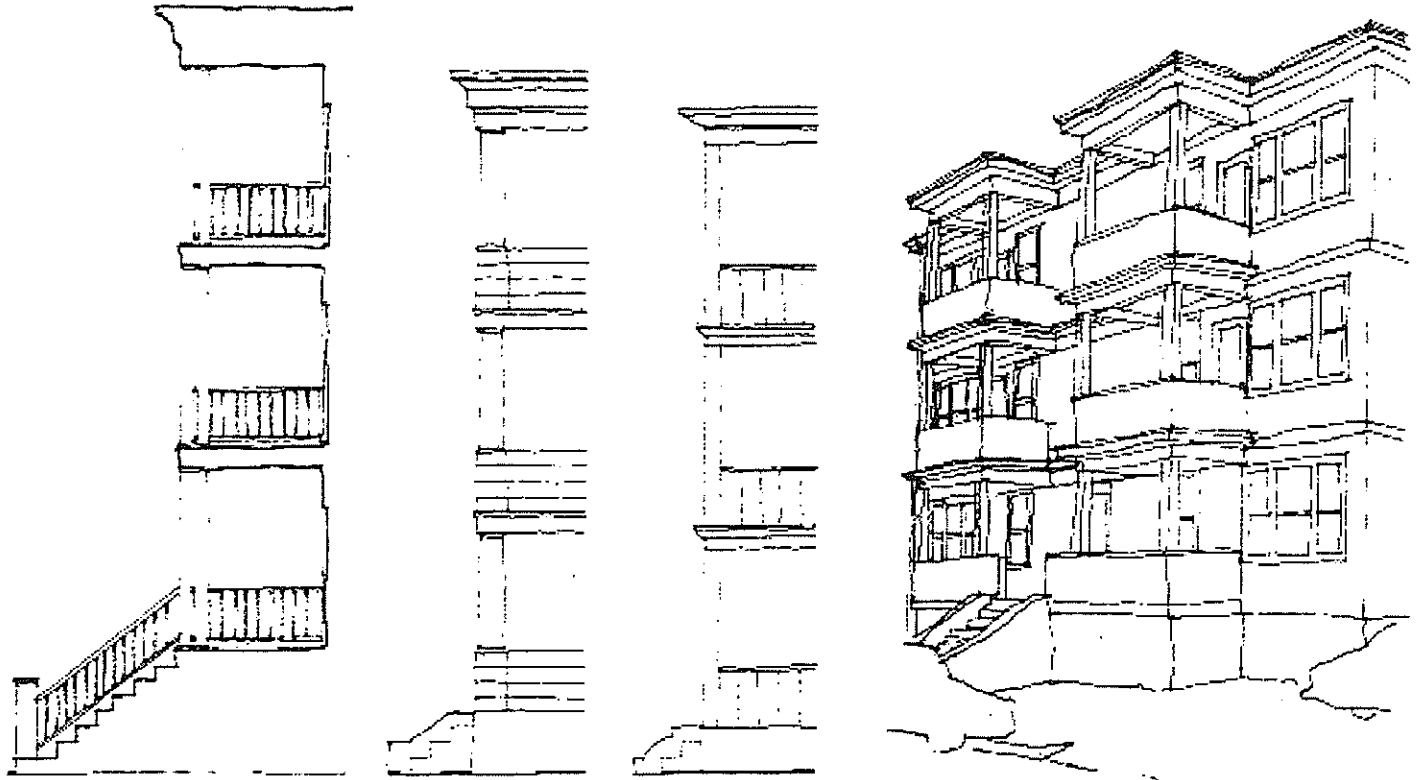
PLAN



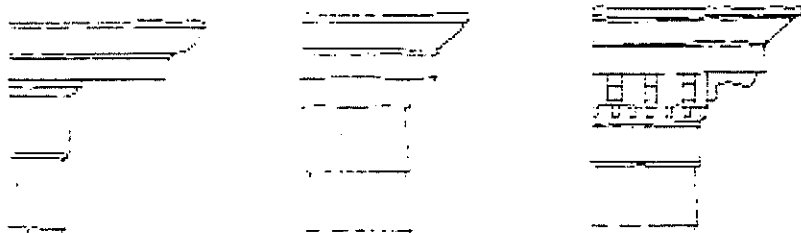
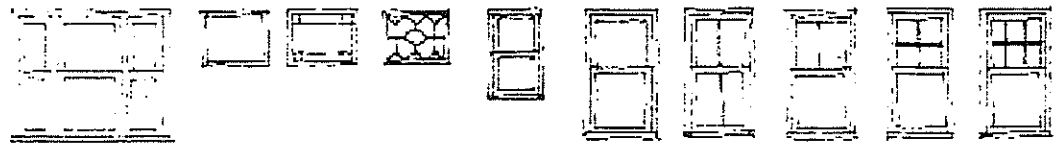
STREET PLAN



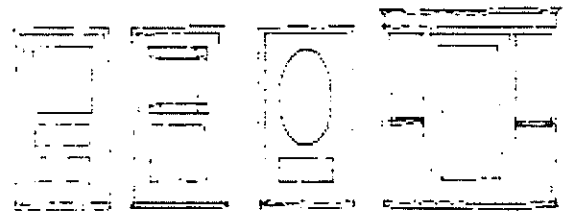
STREET ELEVATION



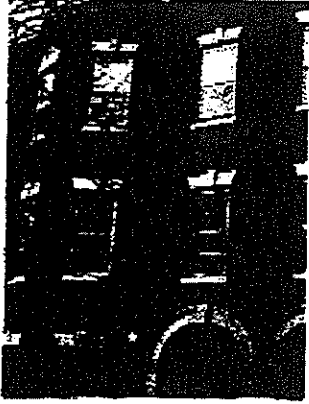
PORCH AND STAIR DETAILS



CORNICE DETAILS



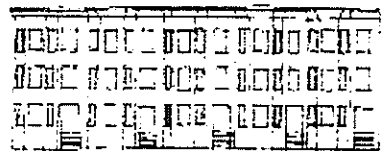
DOOR AND WINDOW DETAILS



PAIRED THREES (B) : EXAMPLES

SIX FAMILY

50



ROOF

- USUALLY PRESENT AT THIRD FLOOR
- WILL HAVE DORMERS
- MAY HAVE SLATE, WOOD, OR ASPHALT SHINGLES

CORLICE

- AT THIRD FLOOR IF A ROOF IS PRESENT, OR AT ROOFLINE IF NOT
- USUALLY BECK IN A DECORATIVE PATTERN BUT MAY BE WOOD MOLDING

FACING

- BECK - USUALLY RED
- RARELY WOOD
- MAY HAVE DECORATIVE STONE COURSES
- FREQUENTLY, FACADE WILL BE BAYED OR BOWED



BELLOWS

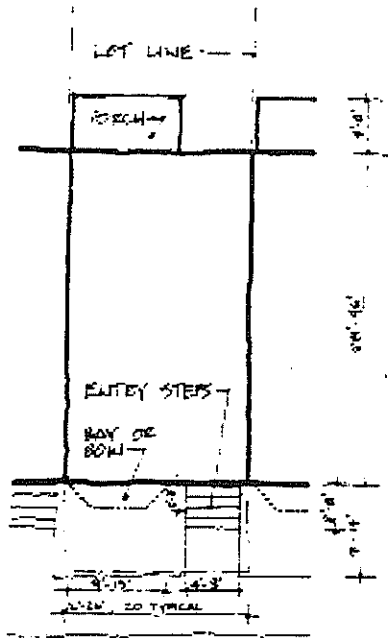
- USUALLY DOUBLE HUNG
- FREQUENTLY, WILL HAVE STONE SILL AND SPANDREL
- AT FIRST FLOOR, MAY BE TALLER

ENTRY

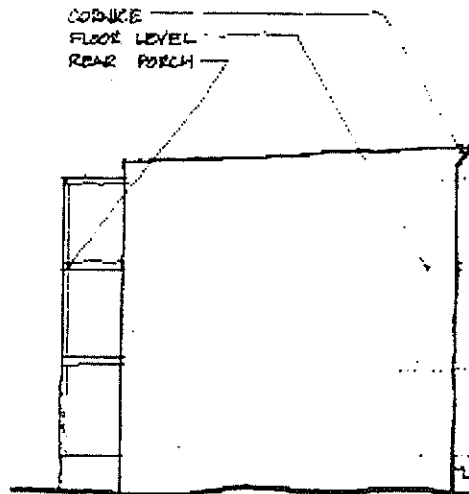
- MAY BE RECESSED OR FLUSH WITH FACADE
- ALWAYS ELEVATED ABOVE GROUND LEVEL

STEPS

- MAY BE STONE, BRICK, WOOD, OR CONCRETE
- MAY OR MAY NOT HAVE HANDRAIL
- ALWAYS PRESENT

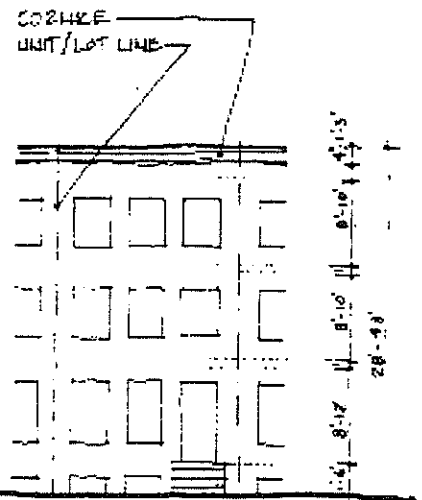


PLAN

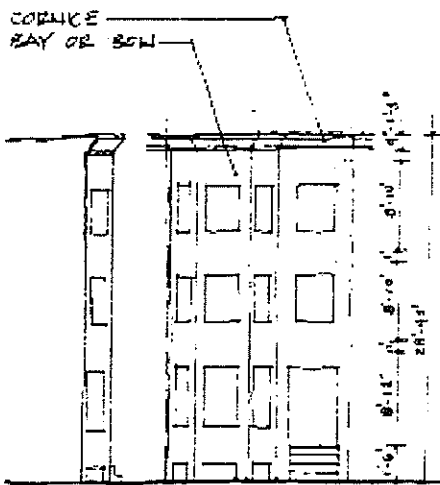


SIDE ELEVATION

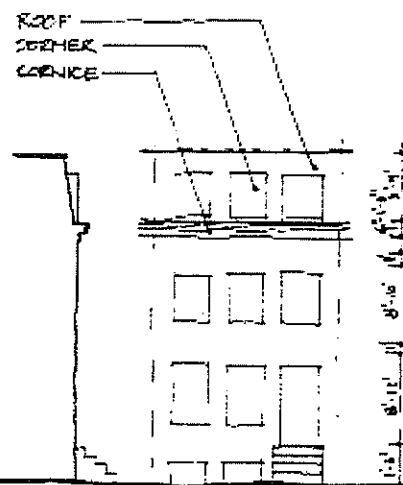
FLAT FRONT WITH CORNICE



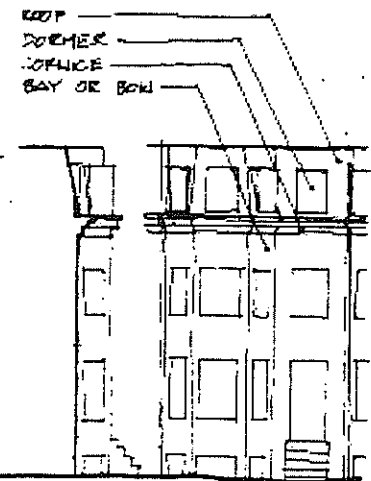
FRONT ELEVATION



SIDE FRONT
BAY/BOW FRONT WITH CORNICE



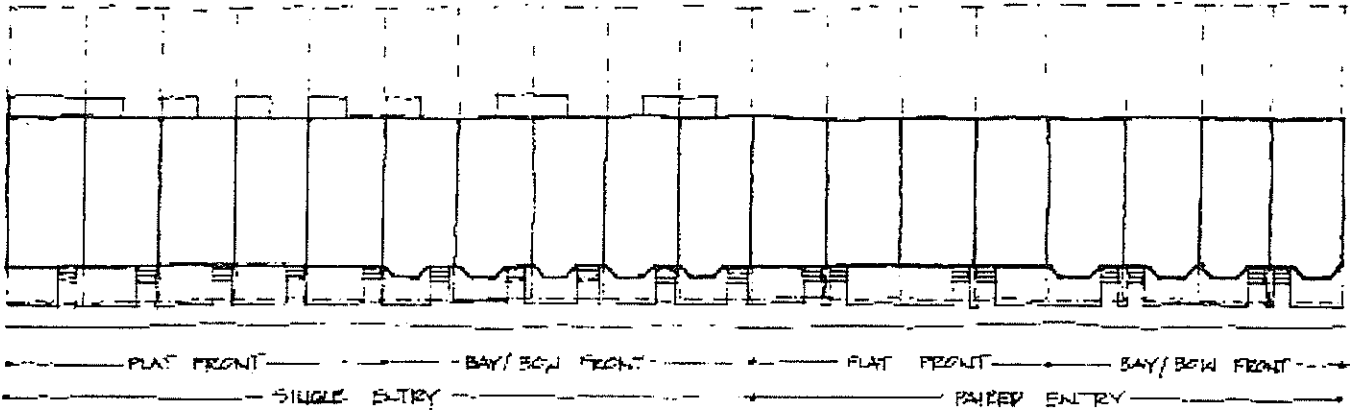
SIDE FRONT
FLAT FRONT WITH ROOF



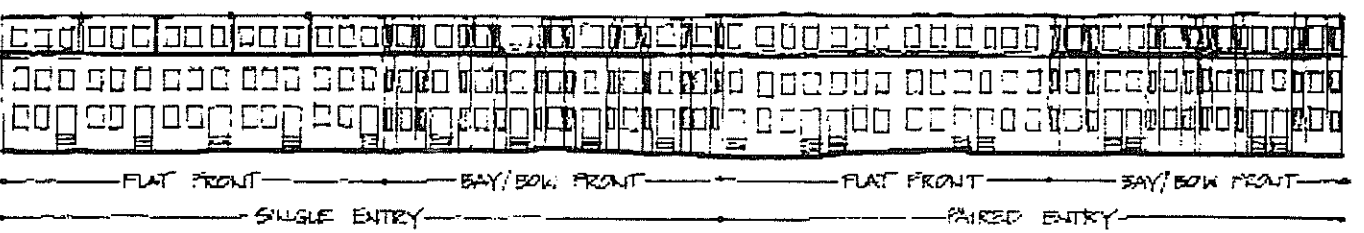
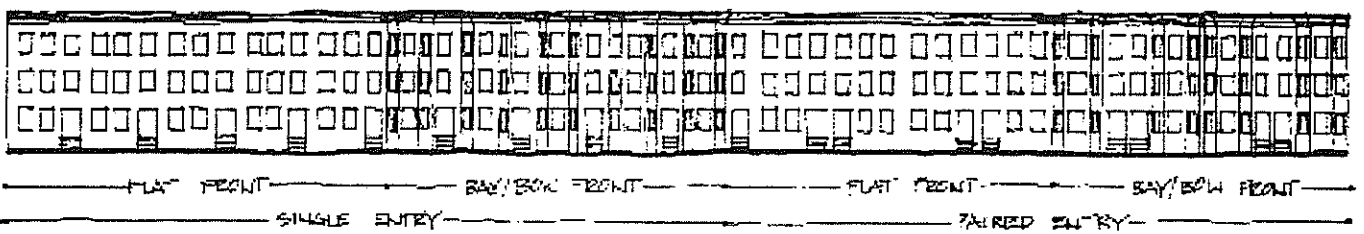
SIDE FRONT
BAY/BOW FRONT WITH ROOF

CHARACTERISTICS

ROWHOUSE

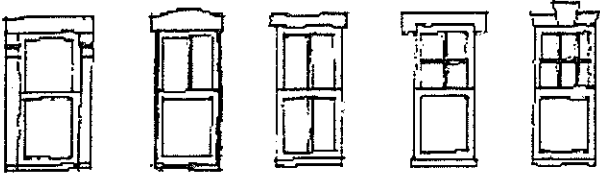


STREET PLAN

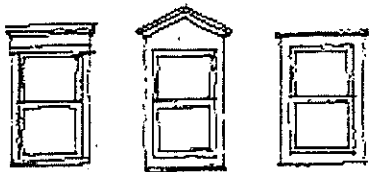


STREET ELEVATIONS

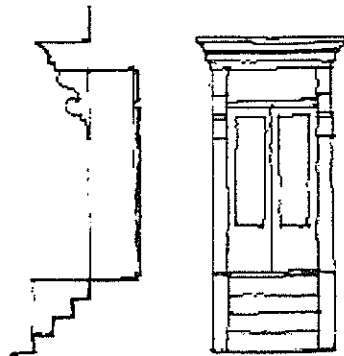
55	ROWHOUSE	CHARACTERISTICS
----	----------	-----------------



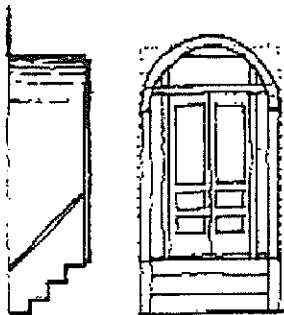
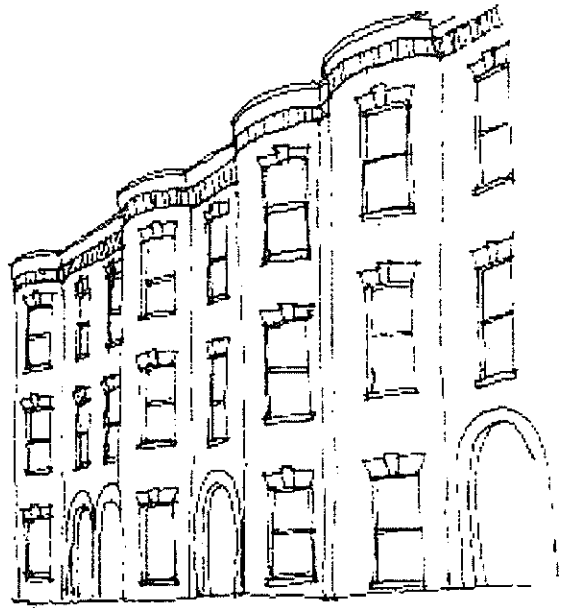
WINDOW DETAILS



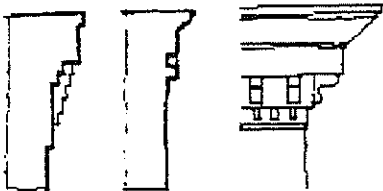
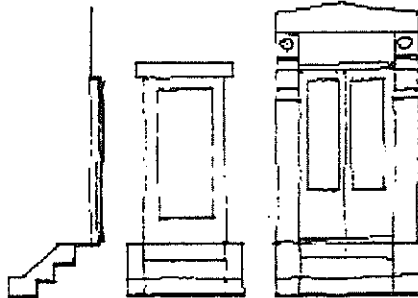
DORMER DETAILS



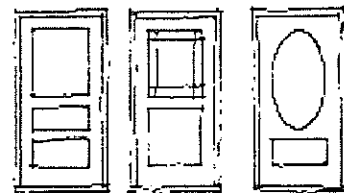
ENTRY AND STAIR DETAIL



ENTRY AND STAIR DETAILS

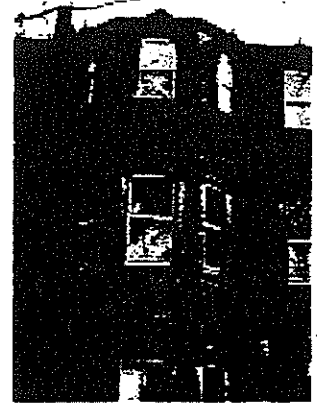


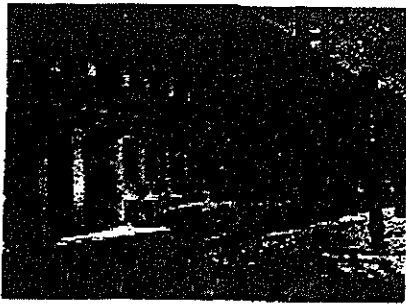
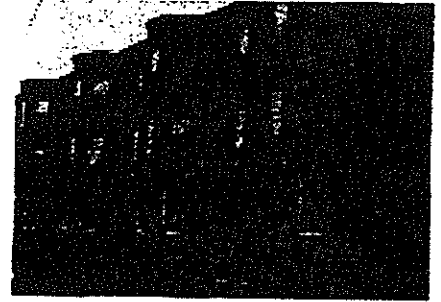
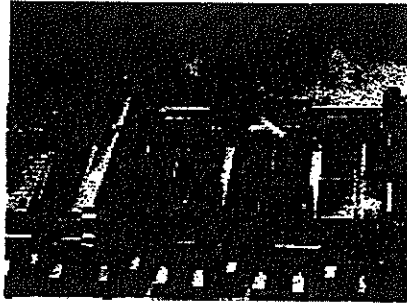
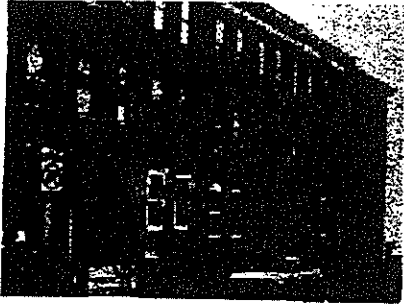
CORNICE DETAILS



DOOR DETAILS







EXAMPLES

ROWHOUSE

58