

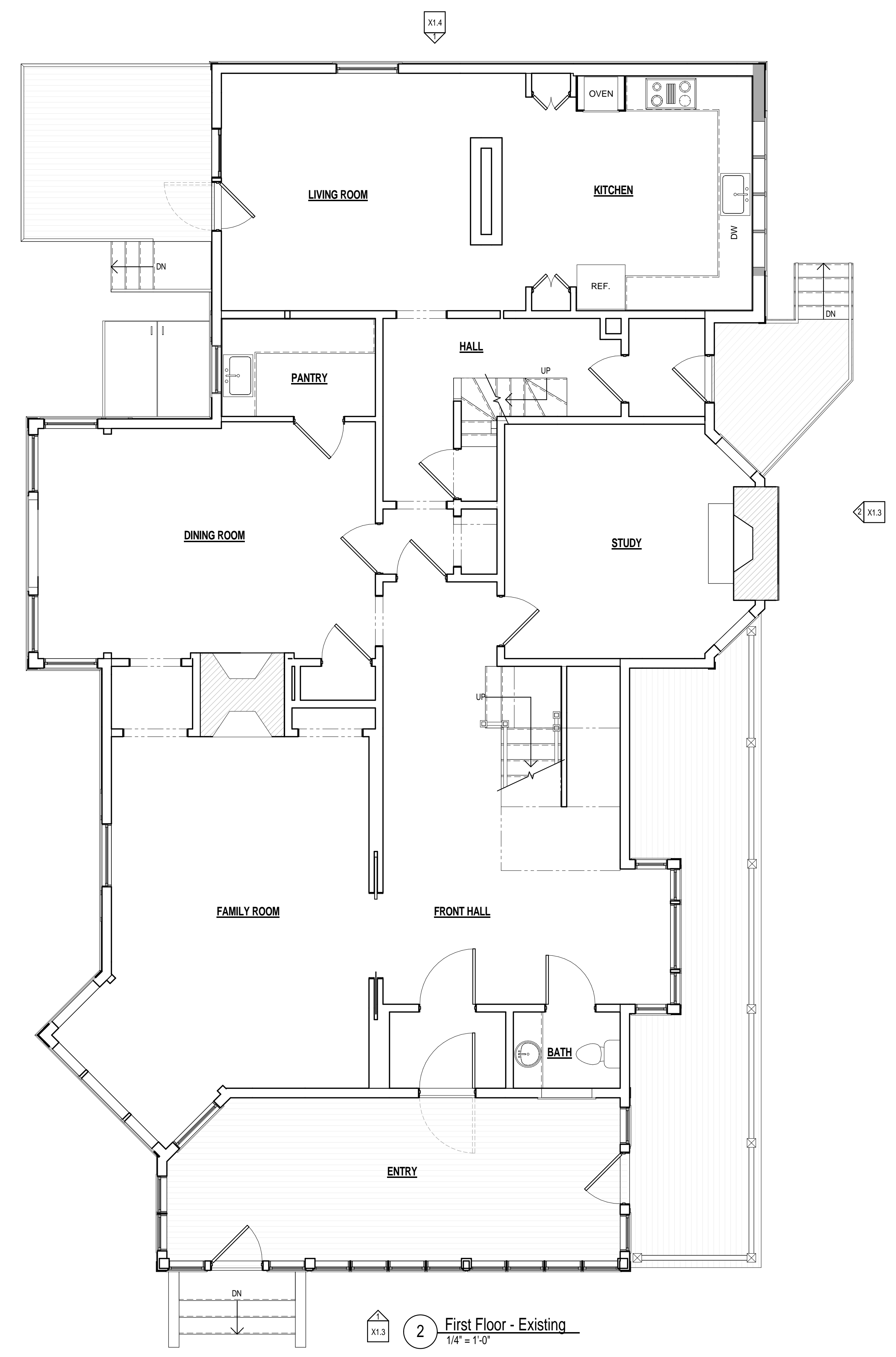
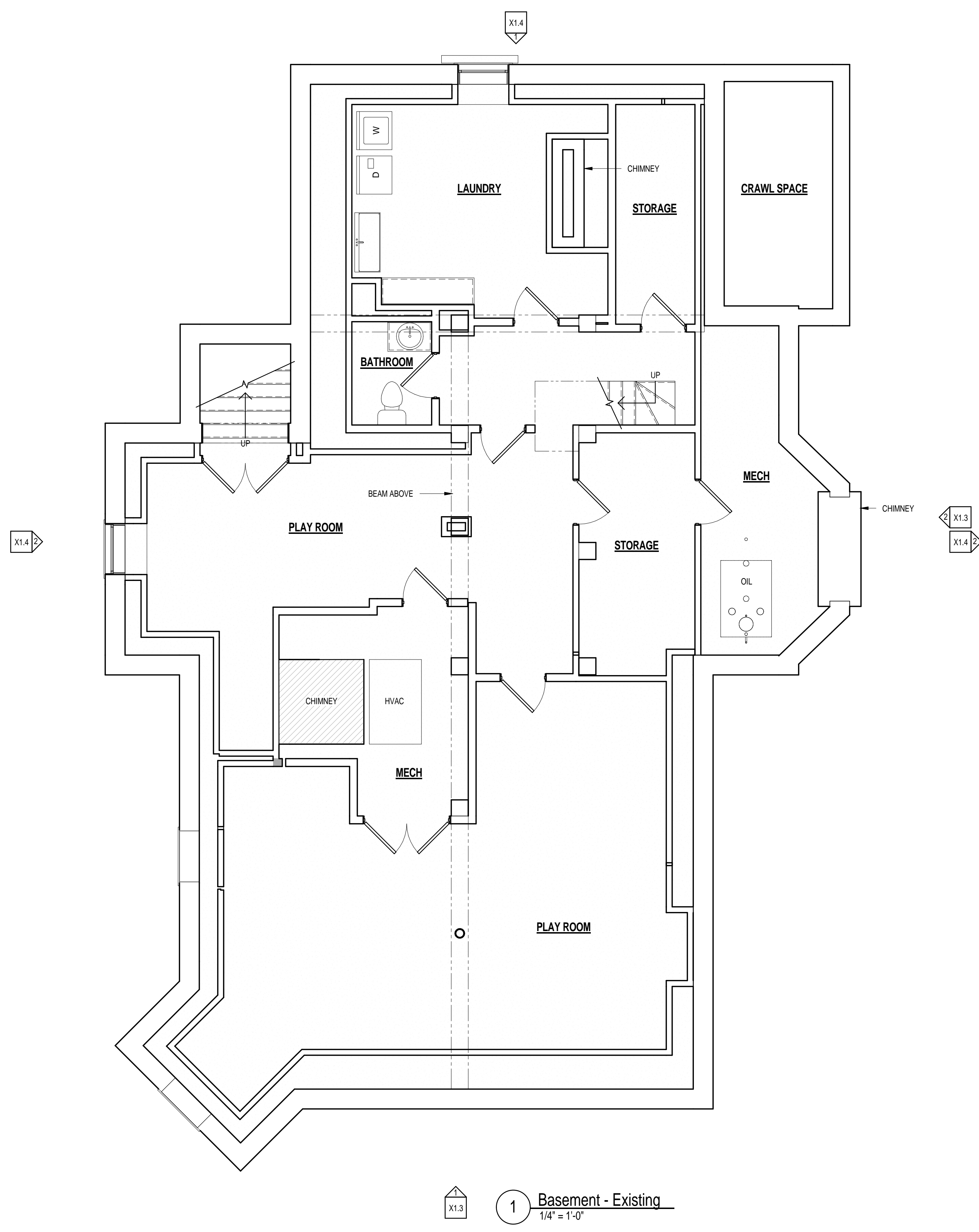
REV.	DATE	DESCRIPTION	WFL

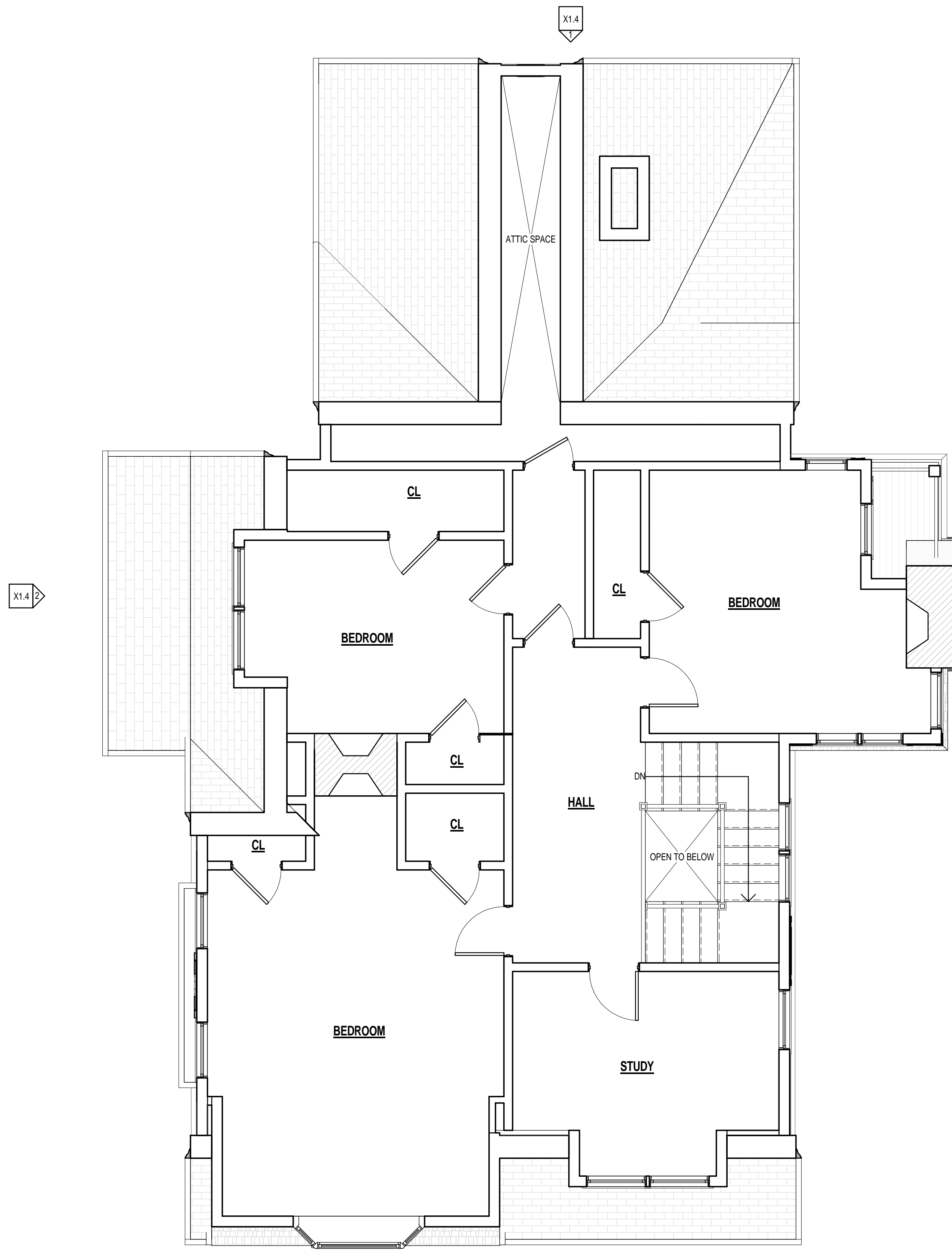
PRELIMINARY BID SET

EXISTING FLOOR PLANS

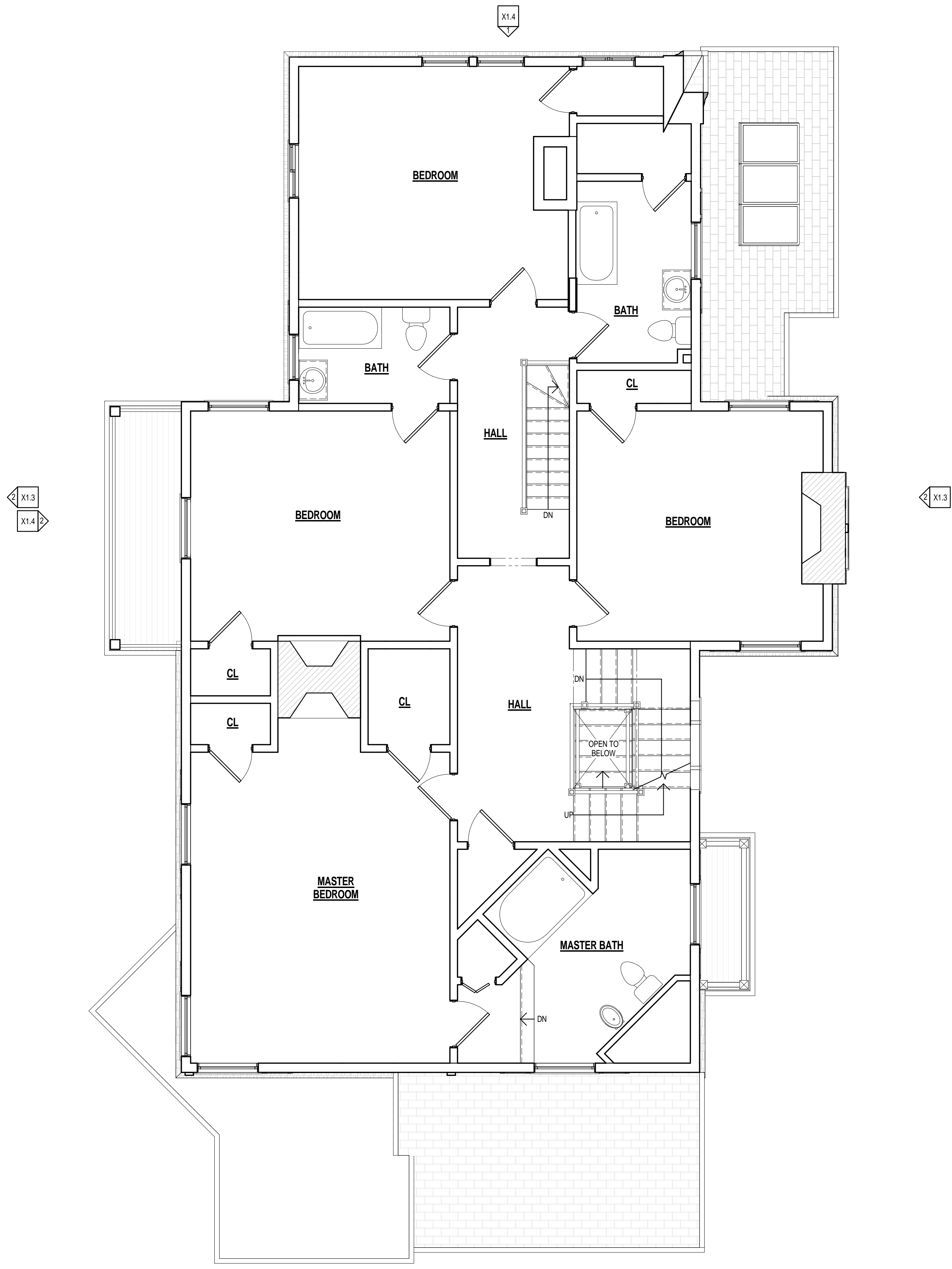
58 Eliot Street  
Boston, Massachusetts 02130

**X1.1**

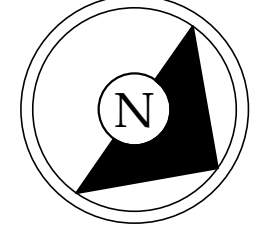




**2** Third Floor - Existing  
1/4" = 1'-0"



**1** Second Floor - Existing  
1/4" = 1'-0"



**Timothy Burke**  
ARCHITECTURE  
142 BERKELEY STREET, BOSTON, MASSACHUSETTS 02116  
P: 617.266.1332 | W: timothyburke.net | F: 617.266.1116

REV.	DATE	DESCRIPTION	WFL

PRELIMINARY BID SET

EXISTING FLOOR PLANS

58 Eliot Street  
Boston, Massachusetts 02130

**X1.2**





1 Northeast - Existing  
1/4" = 1'-0"



2 Northwest - Existing  
1/4" = 1'-0"

**Timothy Burke**  
ARCHITECTURE  
142 BERKELEY STREET, BOSTON, MASSACHUSETTS 02116  
P: 617.266.1332 | W: timothyburke.net | F: 617.266.1116

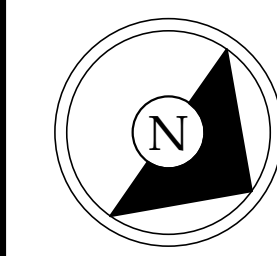
Date:	REV.	DATE	DESCRIPTION	WFL
12-18-14				

PRELIMINARY BID SET

EXISTING ELEVATIONS

58 Eliot Street  
Boston, Massachusetts 02130

X1.3



**Timothy Burke**  
ARCHITECTURE  
142 BERKELEY STREET, BOSTON, MASSACHUSETTS 02116  
P: 617.266.1332 | W: timothyburke.net | F: 617.266.1116

REV.	DATE	DESCRIPTION

PRELIMINARY BID SET

EXISTING ELEVATIONS

58 Eliot Street  
Boston, Massachusetts 02130

**X1.4**

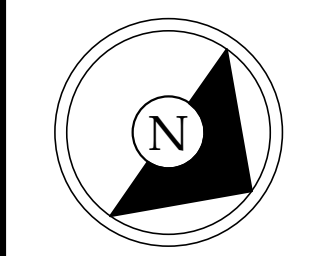


1 Southwest - Existing  
1/4" = 1'-0"



2 Southeast - Existing  
1/4" = 1'-0"





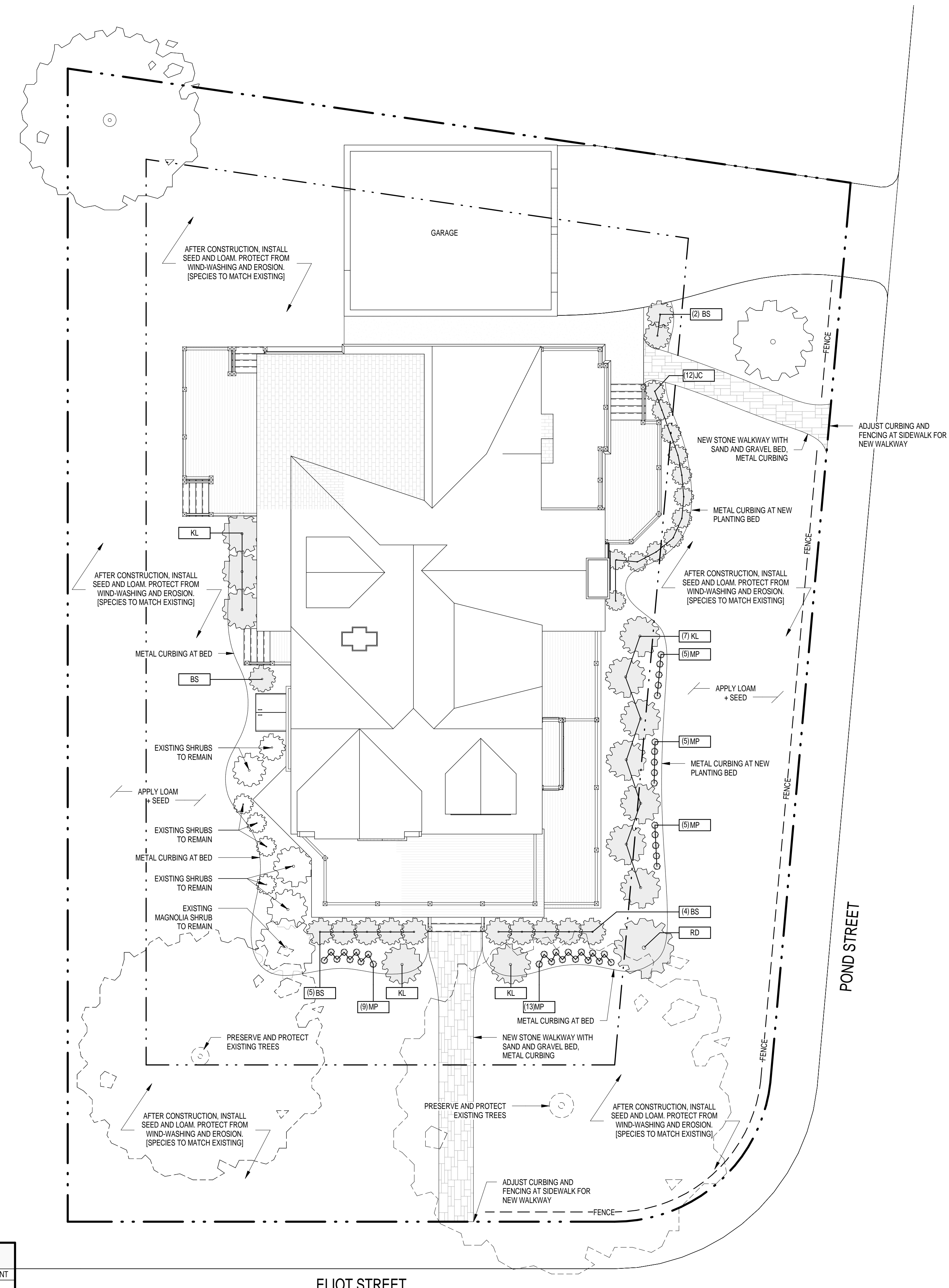
DATE	REV.	DATE	DESCRIPTION	WFL
12-18-14				

PRELIMINARY BID SET

LANDSCAPE AND PLANTING

58 Eliot Street  
Boston, Massachusetts 02130

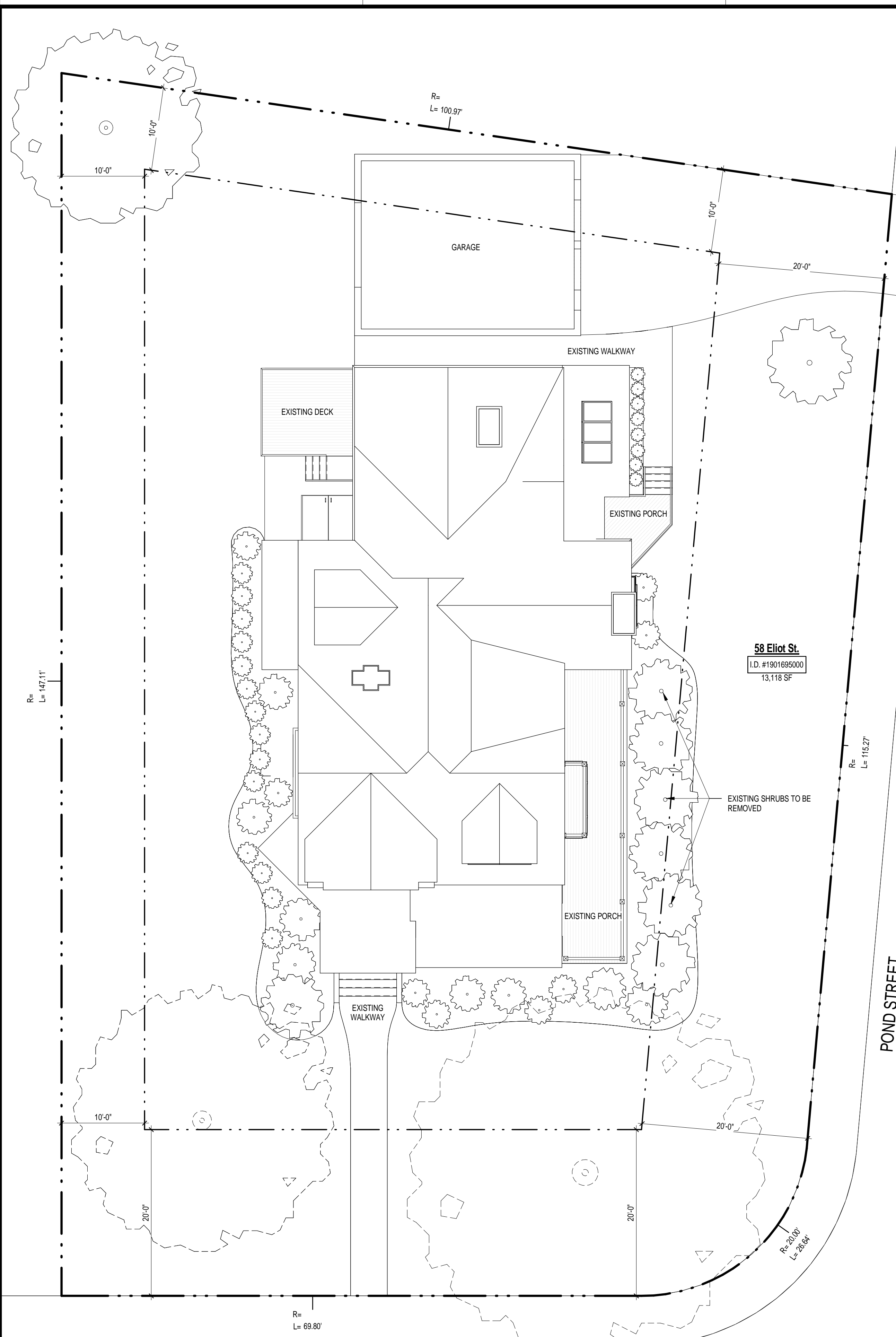
**L1.0**



TYPE MARK	BOTANICAL NAME	COMMON NAME	SIZE	COUNT
BS	BUXUS SEMPERVIRENS	BOXWOOD	12"	13
JC	JUNIPERUS COMMUNIS 'REPANDA'	COMMON JUNIPER	12"	12
KL	KALMIA LATIFOLIA	MOUNTAIN LAUREL	12"	12
MP	"VARRIES"	MIXED PERENIALS	6"	37
RD	"MATCH EXISTING"	RHODODENDRON	36"	1

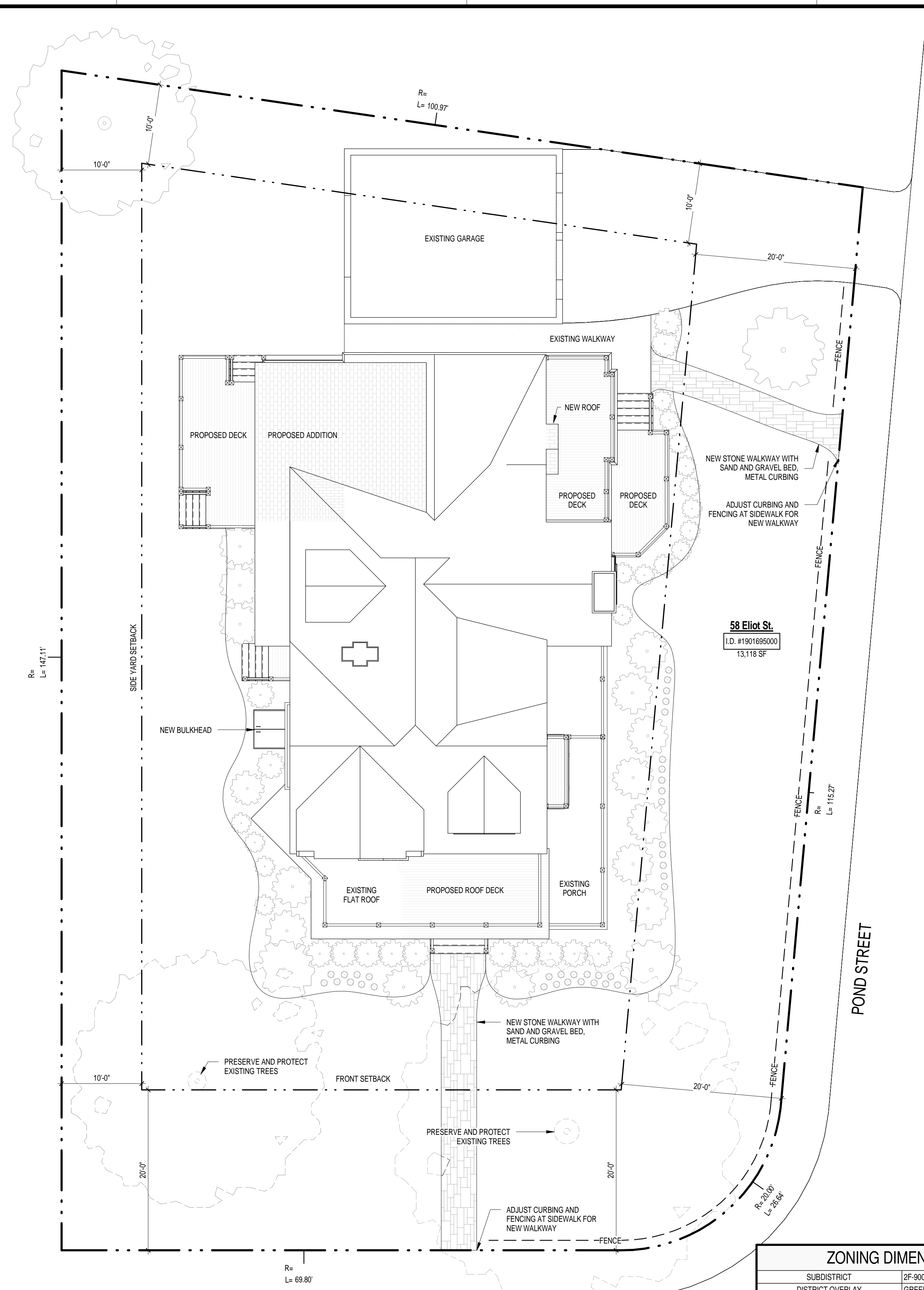
ELIOT STREET  
1 Landscape Plan - Proposed  
1/8" = 1'-0"





2 Site Plan - Existing  
1/8" = 1'-0"

ELIOT STREET



1 Site Plan - Proposed  
1/8" = 1'-0"

PROPOSED F.A.R.		
AREA	NAME	F.A.R.
683 SF	BASEMENT	
2,374 SF	FIRST FLOOR	
2,117 SF	SECOND FLOOR	
1,255 SF	THIRD FLOOR	
6,431 SF		0.491

ELIOT STREET

GENERAL NOTES

- ALL WORK SHALL COMPLY WITH FEDERAL, STATE AND LOCAL BUILDING CODES AND REGULATIONS.
- ALL DIMENSIONS TO NEW WALLS ARE TO FACE OF STUD OR AS NOTED.
- ALL DIMENSIONS TO EXISTING WALLS ARE TO FINISH FACE.
- ALL PORCH/DECK FRAMING, EXPOSED FRAMING, AND FRAMING AT AT DISSIMILAR MATERIALS TO BE PRESSURE TREATED (AS APPLIES).
- PROVIDE BLOCKING / ADDITIONAL FRAMING AS REQUIRED FOR ALL CABINERY, LIGHT FIXTURES, TOWEL BARS, ETC.
- ALL DETAILS, SECTIONS, NOTES, OR REFERENCES TO OTHER DRAWINGS ARE INTENDED TO BE TYPICAL, UNLESS OTHERWISE NOTED.
- ALL DIMENSIONS AND SITE CONDITIONS TO BE FIELD VERIFIED AND SHALL BE THE RESPONSIBILITY OF THE GENERAL CONTRACTOR. THE GENERAL CONTRACTOR SHALL NOTIFY THE ARCHITECT OF ANY DISCREPANCY PRIOR TO COMMENCEMENT OF WORK.
- DURING CONSTRUCTION, AND PRIOR TO THE INCORPORATION OF ANY CHANGES, REVISIONS, MODIFICATIONS AND/OR DEVIATIONS FROM THE CONSTRUCTION DOCUMENTS, CONTRACTOR SHALL BRING TO THE ATTENTION OF THE HOME OWNER AND OBTAIN APPROVAL FROM THE GOVERNING BUILDING OFFICIAL BEFORE PROCEEDING WITH THE WORK.
- IT SHALL BE THE RESPONSIBILITY OF THE GENERAL CONTRACTOR TO LOCATE ALL EXISTING UTILITIES WHETHER INDICATED ON THE PLANS OR NOT, AND TO PROTECT THEM FROM DAMAGE.
- ALL MATERIALS AND EQUIPMENT SHALL BE INSTALLED PER MANUFACTURER'S INSTRUCTIONS/SPECIFICATIONS UNLESS OTHERWISE SPECIFIED.
- GENERAL CONTRACTOR SHALL COORDINATE AND/OR OBTAIN ALL BUILDING PERMITS REQUIRED FOR CONSTRUCTION AND CERTIFICATES OF OCCUPANCY.
- ALL MECHANICAL, ELECTRICAL AND PLUMBING WORK SHALL BE PERFORMED BY SUBCONTRACTORS LICENSED IN THE STATE IN WHICH WORK IS BEING PERFORMED.
- ALL SUBCONTRACTORS SHALL PROVIDE CERTIFICATION OF GENERAL LIABILITY INSURANCE AND WORKMANS COMPENSATION COVERAGE, AS REQUIRED BY THE GENERAL CONTRACTOR.
- GENERAL CONTRACTOR SHALL BE SOLELY RESPONSIBLE FOR ALL CONSTRUCTION MEANS, METHODS, TECHNIQUES, AND PROCEDURES, AS WELL AS ALL ASPECTS OF SAFETY DURING BUILDING CONSTRUCTION, AND SHALL PROVIDE ADEQUATE SHORING AND BRACING TO ENSURE SUCH SAFETY.

SHEET LIST

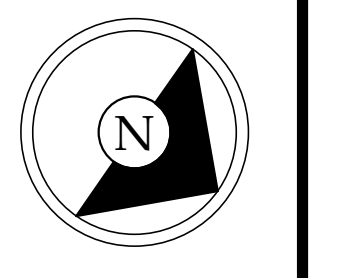
SHEET NO.	SHEET NAME
A1.0	SITE CONDITIONS
A1.1	BASEMENT - FIRST FLOOR PLANS
A1.2	SECOND - THIRD FLOOR PLANS
A1.3	ROOF PLAN SCHEDULES
A2.1	REFLECTED CEILING PLANS
A3.1	PROPOSED ELEVATIONS WINDOW SCHEDULES
A3.2	PROPOSED ELEVATIONS
A3.3	PROPOSED ELEVATIONS
A3.4	PROPOSED ELEVATIONS
A4.1	TYP. WALL SECTION, WALL TYPES, AND REQUIREMENTS
A4.2	BUILDING SECTION AND DETAILS
A4.3	STAIR SECTIONS AND DETAILS
D1.1	DEMOLITION PLANS
D1.2	DEMOLITION PLANS
E1.1	LIGHTING PLANS LIGHTING SCHEDULE
E1.2	LIGHTING PLANS
E2.1	ELECTRICAL POWER AND DISTRIBUTION PLANS
E2.2	ELECTRICAL POWER AND DISTRIBUTION PLANS
L1.0	LANDSCAPE AND PLANTING
S1.1	BASEMENT - FIRST FLOOR FRAMING
S1.2	SECOND - THIRD FLOOR FRAMING
S1.3	ROOF FRAMING PLAN

UNIT AREAS

UNIT	AREA	Name
UNIT A	1,188 SF	UNIT A: FIRST FLOOR
	765 SF	UNIT A: SECOND FLOOR
	1,261 SF	UNIT A: THIRD FLOOR
	3,213 SF	(SUB TOTAL)
UNIT B	727 SF	UNIT B: BASEMENT
	3,940 SF	(TOTAL)
UNIT C	1,186 SF	UNIT C: FIRST FLOOR
	1,353 SF	UNIT C: SECOND FLOOR
	2,539 SF	(SUB TOTAL)
UNIT D	1,279 SF	UNIT D: BASEMENT
	3,820 SF	(TOTAL)
	7,759 SF	

ZONING DIMENSIONAL REQUIREMENTS

SUBDISTRICT	2F-9000	
DISTRICT OVERLAY	GREENBELT PROTECTION, NEIGHBORHOOD DESIGN	
	REQUIRED	PROPOSED
MIN LOT AREA	6000 SF + (3000 SF / ADDITIONAL UNIT)	13,118 SF
MIN LOT WIDTH	50 FT	69.8 FT (94 FT AVG.)
MIN LOT FRONTAGE	50 FT	211.71 FT
MAX F.A.R.	.5	.49
SETBACK - FRONT	20 FT	20 FT
SETBACK - SIDE	10 FT	10 FT
SETBACK - REAR	20 FT	(Corner Lot)
MAX BUILDING HEIGHT	2.5 STORIES, 35 FT	2.5 STORIES, 39 FT (Existing)
USABLE OPEN SPACE	1500 SF + (750 SF / ADDITIONAL UNIT)	8,170 SF (Corner Lot)
REAR YARD ACCESSORY BUILDING MAX OCCUP.	25% SF	



**Timothy Burke**  
ARCHITECTURE  
142 BERKELY STREET, BOSTON MASSACHUSETTS 02116  
P: 617.266.1332 | W: timothyburke.net | F: 617.266.1116

DATE	REV.	DATE	DESCRIPTION
12-18-14			

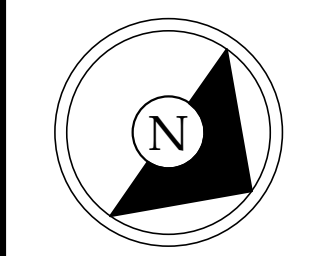
PRELIMINARY BID SET

SITE CONDITIONS

58 Eliot Street  
Boston, Massachusetts 02130

A1.0





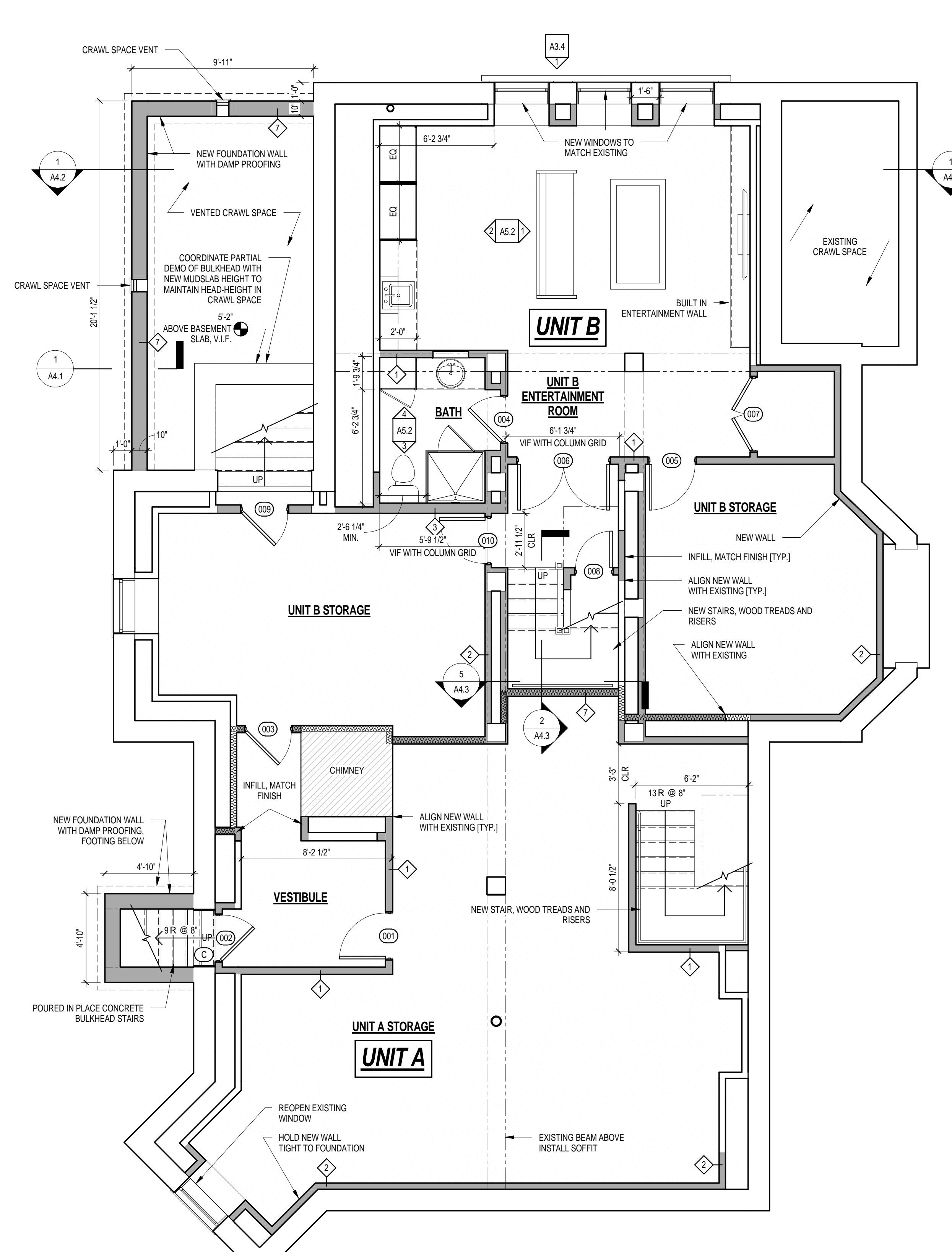
DATE	REV.	DESCRIPTION
12-18-14		WFL
		Drawn By:
		DATE
		DESCRIPTION

PRELIMINARY BID SET

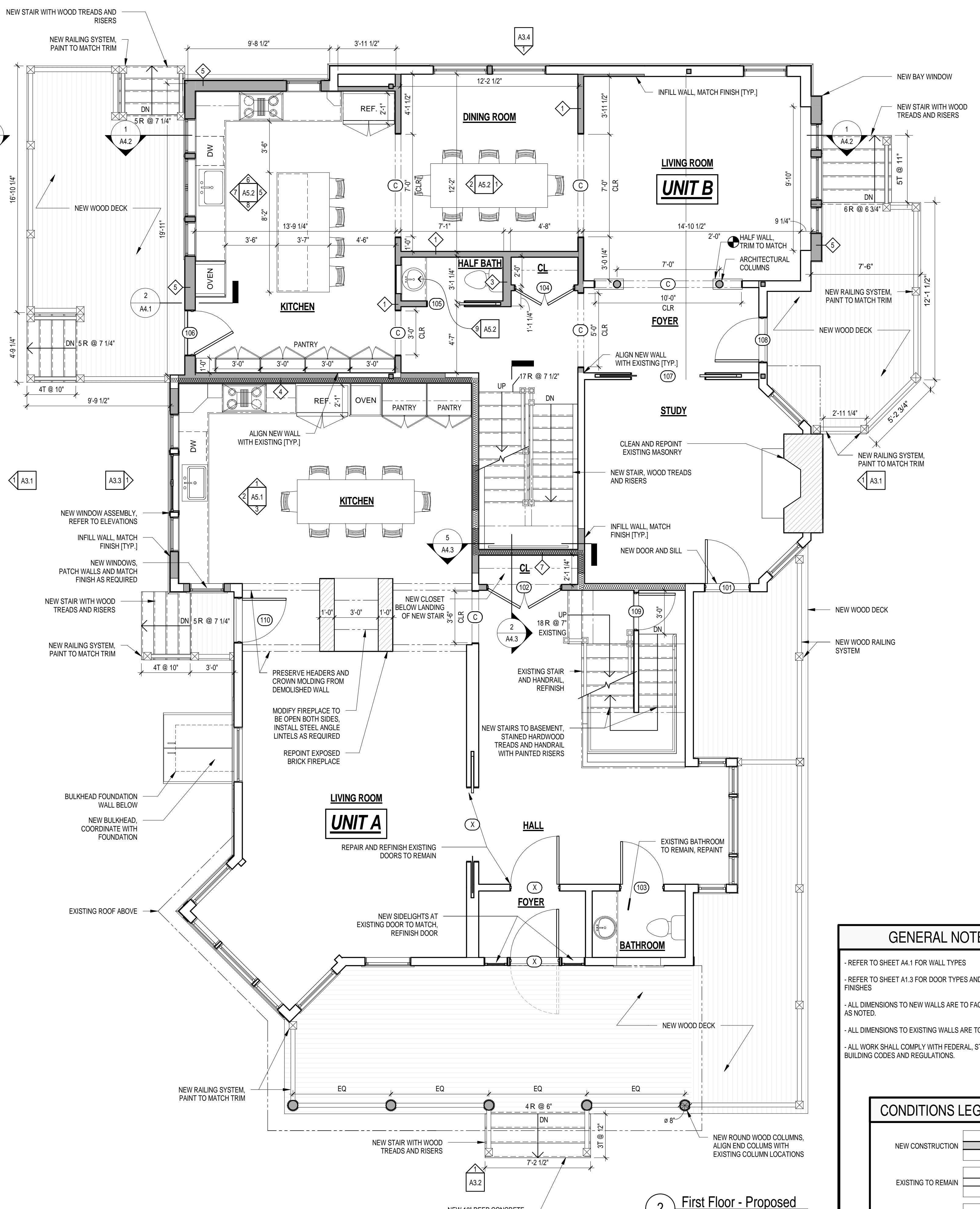
BASEMENT + FIRST FLOOR  
PLANS

58 Eliot Street  
Boston, Massachusetts 02130

**A1.1**



**1** Basement - Proposed  
1/4" = 1'-0"



**2** First Floor - Proposed  
1/4" = 1'-0"

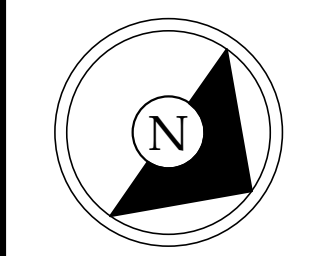
**GENERAL NOTES**

- REFER TO SHEET A4.1 FOR WALL TYPES
- REFER TO SHEET A1.3 FOR DOOR TYPES AND ROOM FINISHES
- ALL DIMENSIONS TO NEW WALLS ARE TO FACE OF STUD OR AS NOTED.
- ALL DIMENSIONS TO EXISTING WALLS ARE TO FINISH FACE.
- ALL WORK SHALL COMPLY WITH FEDERAL, STATE AND LOCAL BUILDING CODES AND REGULATIONS.

**CONDITIONS LEGEND**

NEW CONSTRUCTION	
EXISTING TO REMAIN	
DEMOLISHED	
CONTINUOUS FIRE-RATED PARTITION	





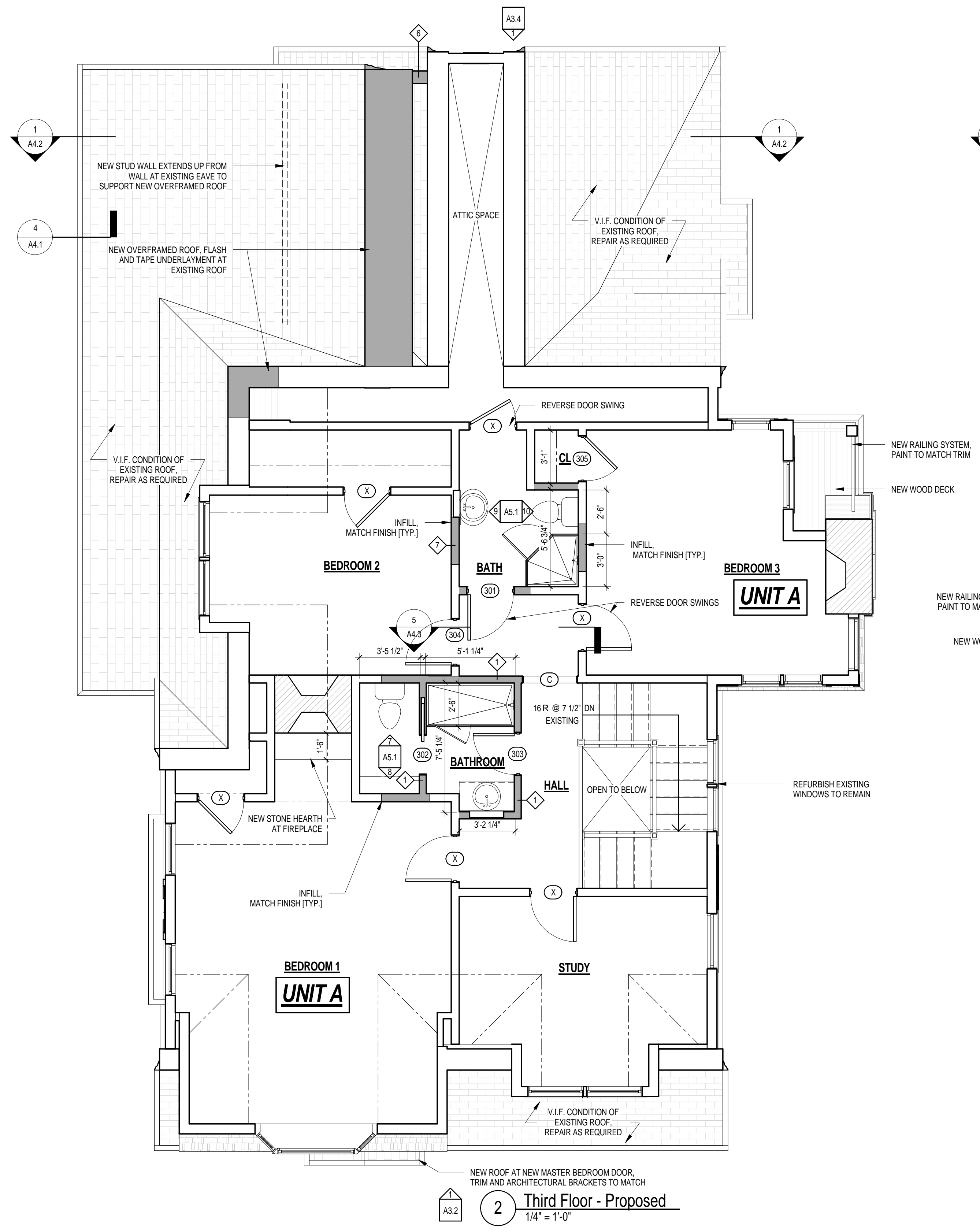
DATE	REV.	DESCRIPTION
12-18-14		Drawn By: WFL
		DESCRIPTION

PRELIMINARY BID SET

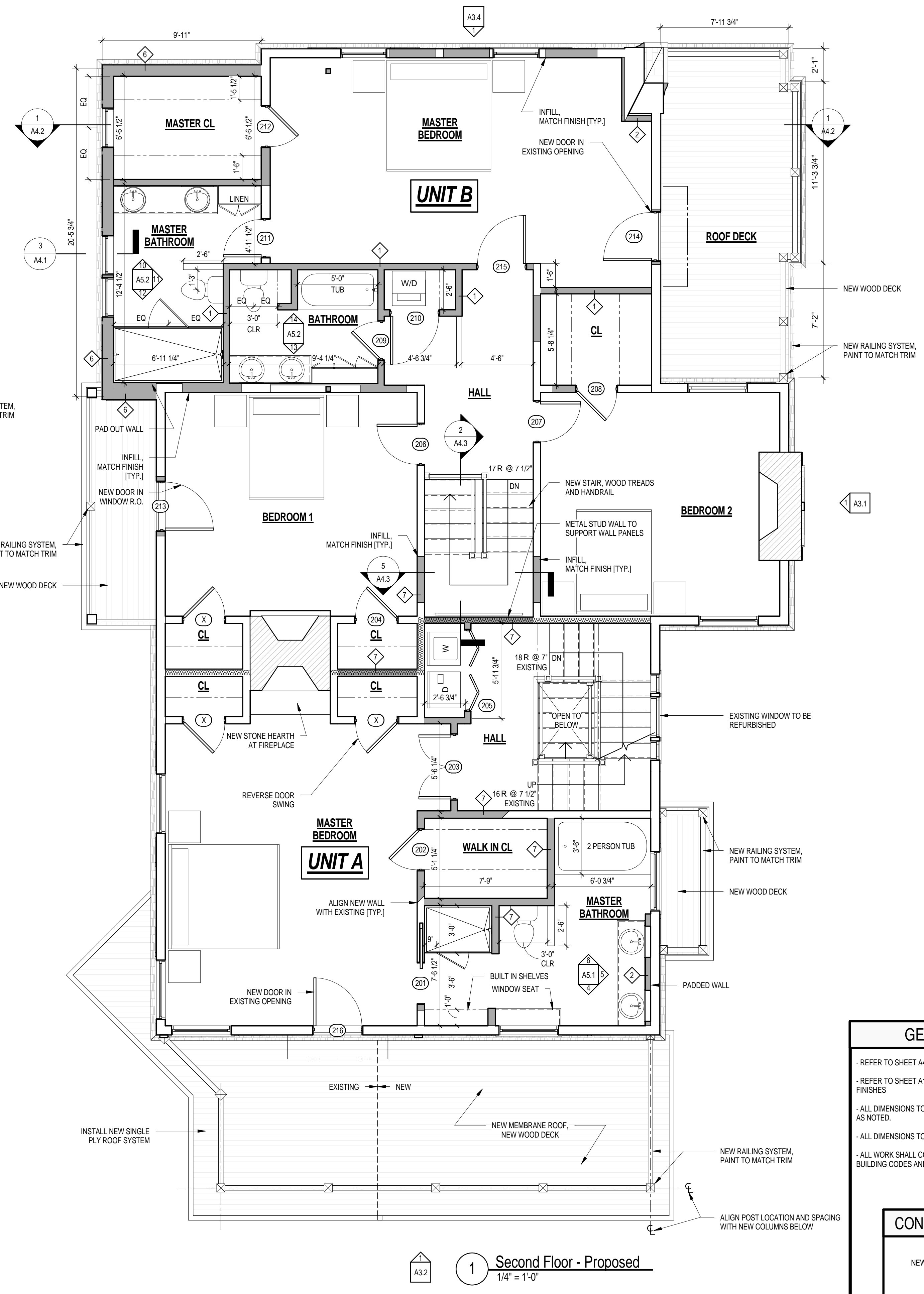
SECOND + THIRD FLOOR  
PLANS

58 Eliot Street  
Boston, Massachusetts 02130

A1.2



2 Third Floor - Proposed  
1/4" = 1'-0"

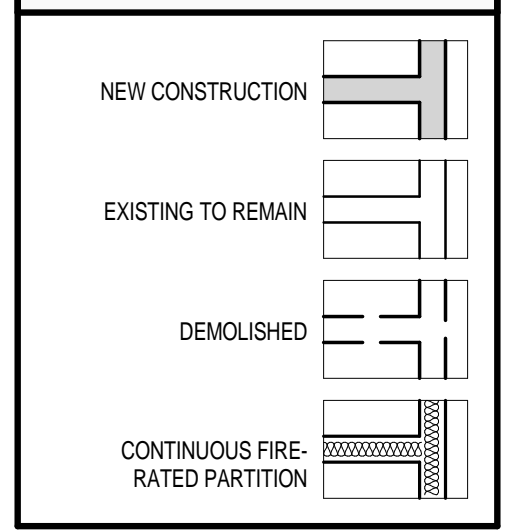


1 Second Floor - Proposed  
1/4" = 1'-0"

**GENERAL NOTES**

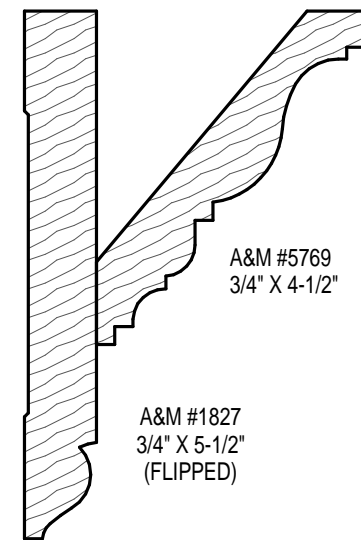
- REFER TO SHEET A4.1 FOR WALL TYPES
- REFER TO SHEET A1.3 FOR DOOR TYPES AND ROOM FINISHES
- ALL DIMENSIONS TO NEW WALLS ARE TO FACE OF STUD OR AS NOTED.
- ALL DIMENSIONS TO EXISTING WALLS ARE TO FINISH FACE.
- ALL WORK SHALL COMPLY WITH FEDERAL, STATE AND LOCAL BUILDING CODES AND REGULATIONS.

**CONDITIONS LEGEND**



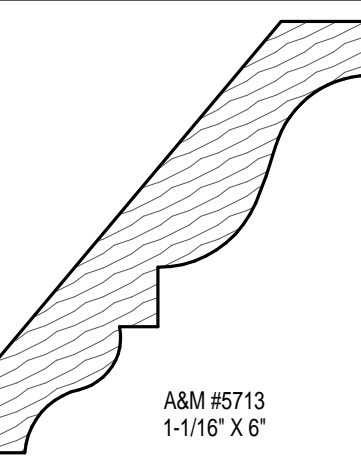


**TRIM LEGEND**



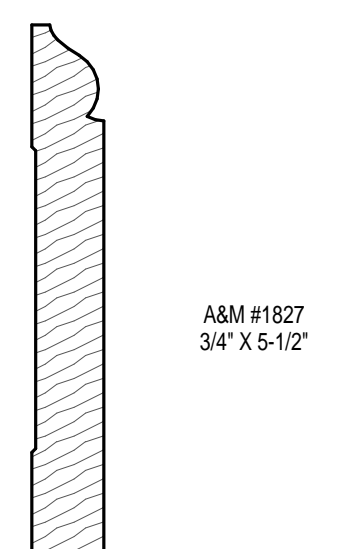
UNIT A  
MASTER BEDROOM

UNIT B  
MASTER BEDROOM  
LIVING ROOM  
DINING ROOM  
KITCHEN



UNIT A  
MASTER BATHROOM  
BEDROOM 1  
BEDROOM 3  
3RD FLOOR HALL

UNIT B  
MASTER BATHROOM  
BEDROOM 1  
BEDROOM 2



UNIT A  
STORAGE  
WALK-IN CLOSET

UNIT B  
BASEMENT BATHROOM  
ENTERTAINMENT ROOM  
PLAY ROOM  
STORAGE  
1ST FLOOR HALF BATH  
SECOND FLOOR BATHROOM  
MASTER BATHROOM  
WALK-IN CLOSET

- REFER TO TRIM SCHEDULE (A1.3) OR INTERIOR ELEVATIONS FOR ADDITIONAL INFORMATION ON TRIM LOCATION AND TYPE.

- PATCH TO MATCH EXISTING TRIMS + FINISHES WHEN APPLICABLE

**ROOM FINISH SCHEDULE - UNIT A**

ROOM NAME	FLOOR	FINISH			TRIM		REMARKS
		WALL	CEILING	BASE	CROWN		
<b>BASEMENT</b>							
UNIT A STORAGE	SC	GWB					GWB, TAPE ONLY
<b>FIRST FLOOR</b>							
BATHROOM	RF	PT	PT	PT, PME			
FOYER	RF	PT	PT	PT, PME	PT, PME		
HALL	RF	PT	PT	PT, PME	PT, PME		
KITCHEN	RF	PT, PLS, CT	PT, FIRE	PT, PME	PT, PME		TYPE X GWB AT CEILING
LIVING ROOM	RF	PT	PT	PT, PME	PT, PME		
<b>SECOND FLOOR</b>							
HALL	RF	PT, PLS, PME	PT	PT, PME	PT, PME		
MASTER BATHROOM	CT	PT, PLS, CT	PT	PT, PME	PT		
MASTER BEDROOM	RF	PT, PLS	PT	PT, PME	PT		
WALK IN CL.	WD, PME	PT, PLS	PT				
<b>THIRD FLOOR</b>							
BATH	CT	PT, PLS, CT	PT	PT, PME			
BATHROOM	CT	PT, PLS, CT	PT	PT, PME			
BEDROOM 1	RF	PT	PT	PT, PME	PT		
BEDROOM 2	RF	PT	PT	PT, PME			
BEDROOM 3	RF	PT	PT	PT, PME	PT		
HALL	RF	PT, PLS	PT	PT, PME	PT		
STUDY	RF	PT	PT	PT, PME			

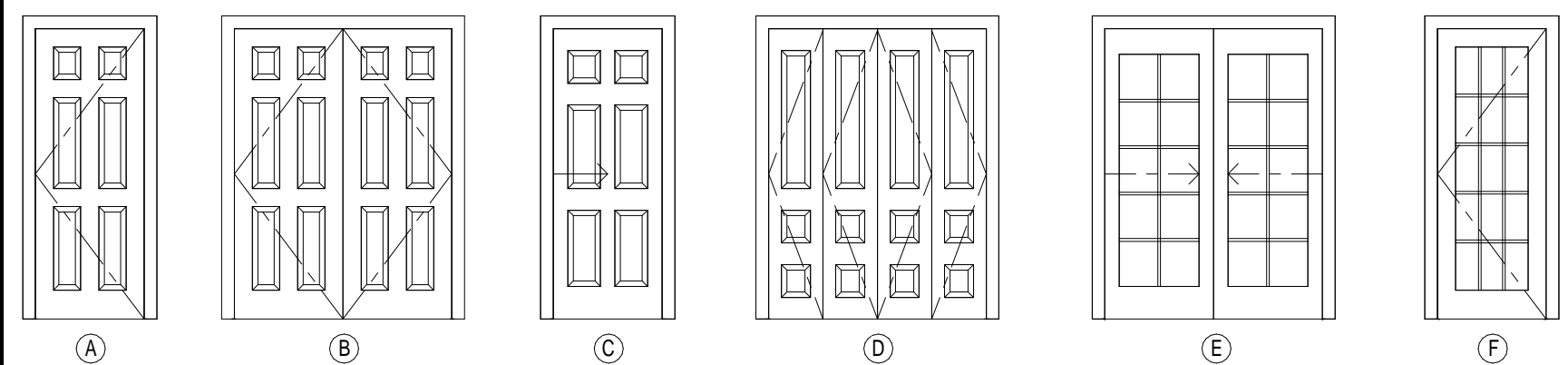
**ROOM FINISH SCHEDULE - UNIT B**

ROOM NAME	FLOOR	FINISH			TRIM		REMARKS
		WALL	CEILING	BASE	CROWN		
<b>BASEMENT</b>							
BATH	CT	GWB	PT, PLS	PT			
UNIT B ENTERTAINMENT ROOM	EWf	PT, PLS	PT, PLS	PT			GWB, TAPE ONLY
UNIT B STORAGE	SC	GWB					TYPE X GWB AT CEILING
<b>FIRST FLOOR</b>							
DINING ROOM	WD	PT, PLS	PT	PT, PME	PT		
FOYER	WD	PT, PLS	PT	PT, PME	PT, PME		
HALF BATH	WD	PT, PLS	PT	PT			
KITCHEN	WD	PT, PLS, CT	PT, PLS	PT, PME	PT		
LIVING ROOM	WD	PT, PLS, PME	PT, PLS	PT, PME	PT		
STUDY	RF	PT	PT	PT, PME	PT		
<b>SECOND FLOOR</b>							
BATHROOM	CT	PT, PLS, CT	PT, FIRE	PT			TYPE X GWB AT CEILING
BEDROOM 1	RF	PT	PT, FIRE	PT, PME	PT		TYPE X GWB AT CEILING
BEDROOM 2	RF	PT	PT, FIRE	PT, PME	PT		TYPE X GWB AT CEILING
HALL	RF	PT	PT, FIRE	PT, PME	PT, PME		TYPE X GWB AT CEILING
MASTER BATHROOM	CT	PT, PLS, CT	PT, PLS	PT			TYPE X GWB AT CEILING
MASTER BEDROOM	RFWD	PT, PLS	PT	PT, PME	PT		TYPE X GWB AT CEILING
MASTER CL.	WD	PT, PLS	PT, PLS	PT			TYPE X GWB AT CEILING

**ROOM FINISH LEGEND**

EX	EXISTING
C-1, 2...	CARPET (-NUM) [REFERENCING CARPET TYPE OR COLOR]
CK	CORK
SC	SEALED CONCRETE
CT-1, 2...	CERAMIC TILE (-NUM) [REFERENCING TILE TYPE OR COLOR]
EP	EPOXY PAINT
PT	PAINT
PLS	PLASTER
VB	VINYL BASE
LWC	LAMINATE WALL COVERING [SEE SPEC FOR TYPES]
FRP	FIBERGLASS REINFORCED PLASTIC PANEL
EWf	ENGINEERED WOOD FLOORING
VIN-1, 2...	VINYL FLOOR COVERING (-NUM) [REFERENCING TYPE OR COLOR]
WD	HARDWOOD
MR-GWB	MOISTURE RESISTANT GYPSUM WALL BOARD
GWB	GYPSUM WALL BOARD
CBB	CEMENTITIOUS BACKER BOARD
VCT	VINYL COMPOSITE TILE
ACT	ACOUSTIC CEILING TILE
POLY	POLYMER / PLASTIC
S-MTL	STAMPED METAL
P-MTL	METAL PANEL
BBRD	BEAD BOARD
ST	STONE
STU	STUCCO
SC	SEALED CONCRETE
SG	STAIN GRADE
RF	REFINISH
PME	PATCH TO MATCH EXISTING
FIRE	(FIRE RATED PARTITION CEILING)

**DOOR TYPE LEGEND**

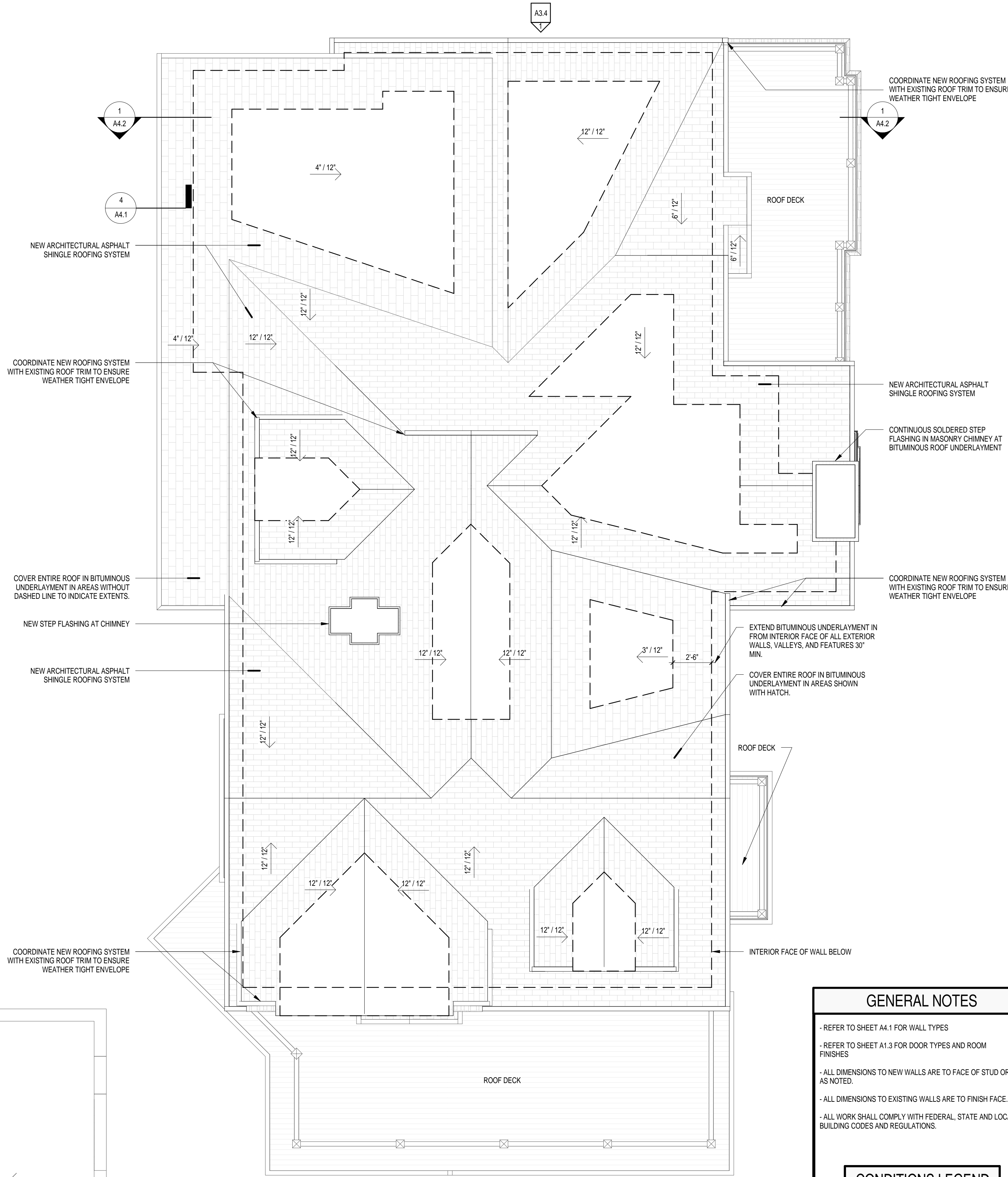


**DOOR SCHEDULE**

MARK	DOOR TYPE	SIZE			FINISH	REMARKS	ELEV.
		WIDTH	HEIGHT	PANEL			
<b>BASEMENT</b>							
001	Single	2'-6"	6'-8"	2'-6"	6 Panel	C-LABEL, INSULATED STEEL	A
002	Single	2'-6"	6'-8"	2'-6"	6 Panel	INSULATED STEEL	A
003	Single	2'-6"	6'-8"	2'-6"	6 Panel	C-LABEL, INSULATED STEEL	A
004	Single	2'-6"	6'-8"	2'-6"	6 Panel		A
005	Single	2'-6"	6'-8"	2'-6"	6 Panel		A
006	Double	5'-0"	6'-8"	2'-6"	6 Panel		B
007	Double	4'-0"	6'-8"	2'-0"	6 Panel		B
008	Single	2'-0"	5'-0"	2'-0"	6 Panel		A
009	Single	2'-6"	6'-8"	2'-6"	6 Panel	INSULATED STEEL	B
010	Single	2'-6"	6'-8"	2'-6"	6 Panel		A
C	Cased Opening - Square	3'-0"	6'-8"				N/A
<b>FIRST FLOOR</b>							
101	Single	3'-0"	6'-8"	3'-0"	15 Lite	INSULATED GLASS	F
102	Double	5'-0"	5'-6"	2'-6"	6 Panel		B
104	Double	4'-0"	6'-8"	2'-0"	6 Panel		B
105	Single - Pocket	2'-6"	6'-8"	2'-6"	6 Panel		C
106	Single	3'-0"	6'-8"	3'-0"	15 Lite	INSULATED GLASS	F
107	Double - Pocket	5'-0"	6'-8"	2'-6"	10 Lite		E
108	Single	3'-0"	6'-8"	3'-0"	15 Lite	INSULATED GLASS	F
109	Single	2'-6"	6'-0"	2'-6"	6 Panel		A
110	Single	3'-0"	6'-8"	3'-0"	15 Lite	INSULATED GLASS	F
C	Cased Opening - Square	3'-6"	6'-8"				N/A
C	Cased Opening - Square	10'-0"	6'-8"				N/A
C	Cased Opening - Square	7'-0"	6'-8"				N/A
C	Cased Opening - Square	7'-0"	6'-8"				N/A
C	Cased Opening - Square	5'-0"	6'-8"				N/A
C	Cased Opening - Square	3'-0"	6'-8"				N/A
<b>SECOND FLOOR</b>							
201	Single - Pocket	2'-6"	6'-8"	2'-6"	6 Panel		A
202	Single	2'-6"	6'-8"	2'-6"	6 Panel		A
203	Double	4'-0"	6'-8"	2'-0"	6 Panel		B
204	Single	2'-7"	6'-10"	2'-7"	6 Panel		A
205	Bifold - 4 Panel	5'-0"	6'-8"	1'-3"	3 Panel		D
206	Single	2'-6"	6'-8"	2'-6"	6 Panel		A
207	Single	2'-6"	6'-8"	2'-6"	6 Panel		A
208	Single	2'-6"	6'-8"	2'-6"	6 Panel		A
209	Single	2'-4"	6'-8"	2'-4"	6 Panel		A
210	Single	3'-0"	6'-8"	3'-0"	6 Panel		A
211	Single	2'-6"	6'-8"	2'-6"	6 Panel		A
212	Single	2'-6"	6'-8"	2'-6"	6 Panel		A
213	Single	3'-0"	6'-8"	3'-0"	15 Lite	INSULATED GLASS	F
214	Single	3'-0"	6'-8"	3'-0"	15 Lite	INSULATED GLASS	F
215	Single	3'-0"	6'-8"	3'-0"	6 Panel		A
216	Single	3'-0"	6'-8"	3'-0"	15 Lite	INSULATED GLASS	F
<b>THIRD FLOOR</b>							
301	Single	2'-7"	6'-10"	2'-7"	6 Panel		A
302	Single - Pocket	2'-2"	6'-8"	2'-2"	6 Panel		C
303	Single	2'-4"	6'-8"	2'-4"	6 Panel		A
304	Single	2'-7"	6'-10"	2'-7"	6 Panel		A
305	Single	2'-6"	6'-8"	2'-6"	6 Panel		A
C	Cased Opening - Square	3'-0"	6'-8"				N/A

**DOOR NOTES**

- ON PLANS "X" INDICATES EXISTING DOOR TO REMAIN
- CLEAN HARDWARE AND ADJUST AS NEEDED
- REPAIR DOOR UNLESS OTHERWISE NOTED



1 Roof Plan - Proposed  
1/4" = 1'-0"

2 Garage Roof Plan - Proposed  
1/4" = 1'-0"

**GENERAL NOTES**

- REFER TO SHEET A4.1 FOR WALL TYPES
- REFER TO SHEET A1.3 FOR DOOR TYPES AND ROOM FINISHES
- ALL DIMENSIONS TO NEW WALLS ARE TO FACE OF STUD OR AS NOTED.
- ALL DIMENSIONS TO EXISTING WALLS ARE TO FINISH FACE.
- ALL WORK SHALL COMPLY WITH FEDERAL, STATE AND LOCAL BUILDING CODES AND REGULATIONS.

**CONDITIONS LEGEND**

NEW CONSTRUCTION	
EXISTING TO REMAIN	
DEMOLISHED	
CONTINUOUS FIRE-RATED PARTITION	

**Timothy Burke**  
ARCHITECTURE  
142 BERKELEY STREET, BOSTON MASSACHUSETTS 02116  
P: 617.266.1332 | W: timothyburke.net | F: 617.266.1116

DATE	REV.	DESCRIPTION
12-18-14		

PRELIMINARY BID SET

58 Eliot Street  
Boston, Massachusetts 02130

A1.3

ROOF PLAN SCHEDULES

1/12/2015 2:51:18 PM



WINDOW SCHEDULE (NEW)							
TYPE MARK	WINDOW TYPE	ROUGH OPENING		MANUFACTURER	MODEL	DESCRIPTION	TYPE
		WIDTH	HEIGHT				
A	Double Hung	2'-11 3/4"	5'-1"	Marvin Windows			36" x 61" WDH 210410
B	Casement-Double	4'-0"	4'-0"	Marvin Windows			48" x 48" C24
C	Casement	2'-4 1/2"	4'-0"	Marvin Windows			29" x 48" CW14
D	Casement-Double	4'-0"	5'-0"	Marvin Windows			48" x 60" C25
E	Casement	2'-4 1/2"	5'-0"	Marvin Windows			29" x 60" CW15
F	Fixed	3'-1 3/4"	4'-1"	Marvin Windows			38" x 49" WPW 30310
G	Double Hung	2'-5 3/4"	4'-1"	Marvin Windows			30" x 49" WDH 24310
H	Double Hung	2'-5 3/4"	4'-1"	Marvin Windows			30" x 49" WDH 24310
I	Double Hung	2'-10 1/2"	5'-2"	Marvin Windows			35" x 62"
J	Double Hung	2'-10 1/2"	5'-2"	Marvin Windows			35" x 62"
K	Double Hung	3'-8 1/2"	5'-2"	Marvin Windows			44" x 62"
L	Double Hung	3'-8 1/2"	5'-2"	Marvin Windows			44" x 62"
M	Fixed-Transom	3'-0"	2'-0"	Marvin Windows			36" x 24"
N	Fixed-Transom	3'-0"	2'-0"	Marvin Windows			36" x 24"
O	Double Hung	1'-9 3/4"	5'-1"	Marvin Windows			22" x 61" WDH 18410
P	Double Hung	1'-9 3/4"	5'-1"	Marvin Windows			22" x 61" WDH 18410

WINDOW SCHEDULE (EXISTING TO REMAIN)					
MARK	WINDOW TYPE	ROUGH OPENING		REMARKS	
		WIDTH	HEIGHT		
110	Double Hung	3'-9"	5'-9 1/2"		
111	Fixed	2'-3 1/2"	4'-0"		
112	Fixed	2'-3 1/2"	4'-0"		
113	Double Hung	3'-5 1/2"	4'-0"		
114	Double Hung	3'-5 1/2"	4'-0"		
115	Double Hung	2'-10 1/2"	4'-8"		
116	Double Hung	2'-10 1/2"	4'-8"		
117	Fixed	2'-10 1/2"	1'-8"		
118	Fixed	2'-10 1/2"	1'-8"		
119	Double Hung	3'-0"	3'-10 1/2"		
120	Double Hung	1'-11"	6'-7"		
121	Double Hung	1'-11"	6'-7"		
122	Double Hung	1'-11"	6'-7"		
123	Double Hung	1'-11"	6'-7"		
124	Double Hung	3'-11"	6'-7"		
125	Double Hung	3'-0 1/2"	5'-6"		
126	Double Hung	3'-0 1/2"	5'-6"		
127	Double Hung	3'-5"	5'-6"		
128	Double Hung	3'-5"	5'-6"		
129	Double Hung	3'-5"	5'-6"		
130	Double Hung	3'-5"	5'-6"		
131	Double Hung	3'-8 1/2"	5'-2"		
132	Double Hung	3'-8 1/2"	5'-2"		
133	Double Hung	3'-8 1/2"	5'-2"		
134	Double Hung	3'-8 1/2"	5'-2"		
135	Double Hung	3'-8 1/2"	5'-2"	NEW TEMPERED GLASS	
136	Double Hung	3'-8 1/2"	5'-2"		
137	Double Hung	3'-8 1/2"	5'-2"		
138	Double Hung	3'-2"	3'-8 1/2"		

WINDOW SCHEDULE (EXISTING TO REMAIN)					
MARK	WINDOW TYPE	ROUGH OPENING		REMARKS	
		WIDTH	HEIGHT		
139	Double Hung	3'-2"	3'-6 1/2"		
140	Double Hung	2'-11 1/2"	3'-10"		
141	Double Hung	2'-11 1/2"	3'-10"		
142	Double Hung	3'-2"	3'-8 1/2"		
143	Double Hung	3'-2"	3'-8 1/2"		
144	Double Hung	3'-2"	4'-10"		
145	Double Hung	2'-9"	4'-10"		
146	Fixed	2'-2 1/2"	2'-0"		
147	Fixed	2'-2 1/2"	2'-0"		
148	Fixed	2'-2 1/2"	2'-0"		
149	Fixed	3'-0"	2'-0"		
150	Bay Window Assembly	6'-11 1/2"	4'-4"		
151	Fixed	2'-6 1/2"	2'-7"		
152	Fixed	1'-2 1/2"	2'-7"		
153	Fixed	1'-2 1/2"	2'-7"		
154	Fixed	2'-6 1/2"	2'-7"		
155	Fixed	2'-6 1/2"	2'-7"		
156	Fixed	1'-2 1/2"	3'-4"		
157	Fixed	1'-2 1/2"	3'-4"		
158	Double Hung	2'-6"	3'-6"		
159	Fixed-Arched-Elliptical	2'-7"	1'-4"		
161	Fixed-Transom	3'-0"	2'-0"		
162	Fixed	2'-3 1/2"	1'-8"		
163	Fixed	2'-3 1/2"	1'-8"		
164	Fixed	3'-5 1/2"	1'-8"		
165	Fixed	3'-5 1/2"	1'-8"		
166	Double Hung	3'-5 1/2"	4'-0"		
167	Fixed-Transom	3'-0"	2'-0"		

### GENERAL NOTES

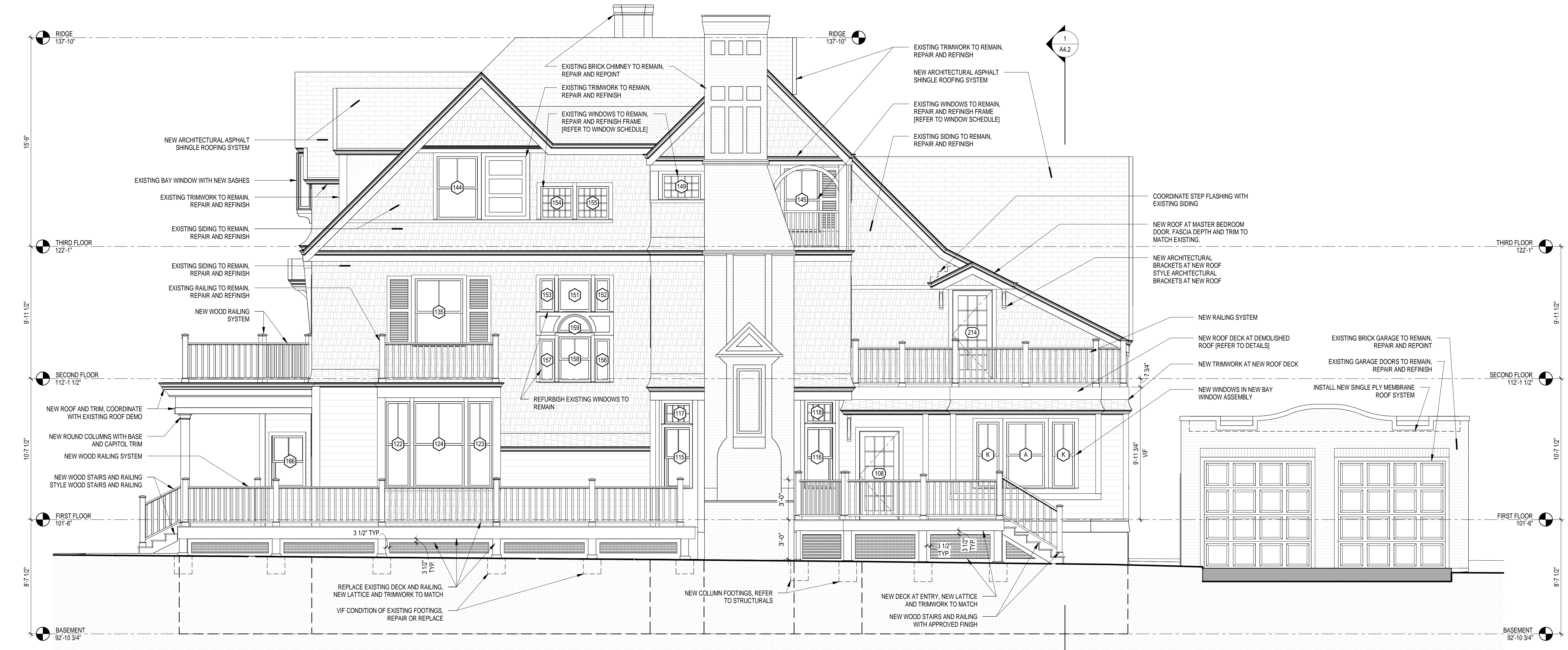
- REFER TO SHEET A3.1 FOR WINDOW TYPES
- ALL DIMENSIONS TO NEW WALLS ARE TO FACE OF STUD OR AS NOTED.
- ALL DIMENSIONS TO EXISTING WALLS ARE TO FINISH FACE.
- ALL WORK SHALL COMPLY WITH FEDERAL, STATE AND LOCAL BUILDING CODES AND REGULATIONS.

### WINDOW NOTES

- WINDOWS TO BE MARVIN WINDOWS, UNLESS NOTED OTHERWISE
- ALL EXISTING WINDOWS TO REMAIN TO BE REPAIRED AND REFINISHED. REPLACE ALL SASHES, MATCH EXISTING SASHES.
- WINDOWS TAGGED WITH NUMBERS INDICATE EXISTING WINDOWS TO REMAIN. WINDOWS TAGGED WITH LETTERS INDICATE NEW WINDOWS.
- VERIFY ALL MODEL NUMBERS AND DIMENSIONS WITH MANUFACTURER
- SEE EXTERIOR ELEVATIONS FOR WINDOW HEAD HEIGHTS
- PROVIDE 1/2 SCREENS AT ALL OPERABLE UNITS
- PROVIDE PERMANENT DIVIDED LIGHT GRILLES WITH DARK INTERIOR SPACERS. SEE EXTERIOR ELEVATIONS FOR LOCATIONS AND PATTERNS. MUNTIN SIZE TO MATCH EXISTING WINDOWS

Date:	REV.	DATE	DESCRIPTION
12-18-14			

PRELIMINARY BID SET



1 Northwest - Proposed  
1/4" = 1'-0"



**GENERAL NOTES**

- REFER TO SHEET A3.1 FOR WINDOW TYPES
- ALL DIMENSIONS TO NEW WALLS ARE TO FACE OF STUD OR AS NOTED.
- ALL DIMENSIONS TO EXISTING WALLS ARE TO FINISH FACE.
- ALL WORK SHALL COMPLY WITH FEDERAL, STATE AND LOCAL BUILDING CODES AND REGULATIONS.

**WINDOW NOTES**

- WINDOWS TO BE MARVIN WINDOWS, UNLESS NOTED OTHERWISE
- ALL EXISTING WINDOWS TO REMAIN TO BE REPAIRED AND REFINISHED. **REPLACE ALL SASHES**, MATCH EXISTING SASHES.
- WINDOWS TAGGED WITH NUMBERS INDICATE EXISTING WINDOWS TO REMAIN. WINDOWS TAGGED WITH LETTERS INDICATE NEW WINDOWS.
- VERIFY ALL MODEL NUMBERS AND DIMENSIONS WITH MANUFACTURER
- SEE EXTERIOR ELEVATIONS FOR WINDOW HEAD HEIGHTS
- PROVIDE 1/2 SCREENS AT ALL OPERABLE UNITS
- PROVIDE PERMANENT DIVIDED LIGHT GRILLES WITH DARK INTERIOR SPACERS. SEE EXTERIOR ELEVATIONS FOR LOCATIONS AND PATTERNS. MUNTIN SIZE TO MATCH EXISTING WINDOWS

**Timothy Burke**  
ARCHITECTURE  
142 BERKELY STREET, BOSTON, MASSACHUSETTS 02116  
P: 617.266.1332 | W: timothyburke.net | F: 617.266.1116



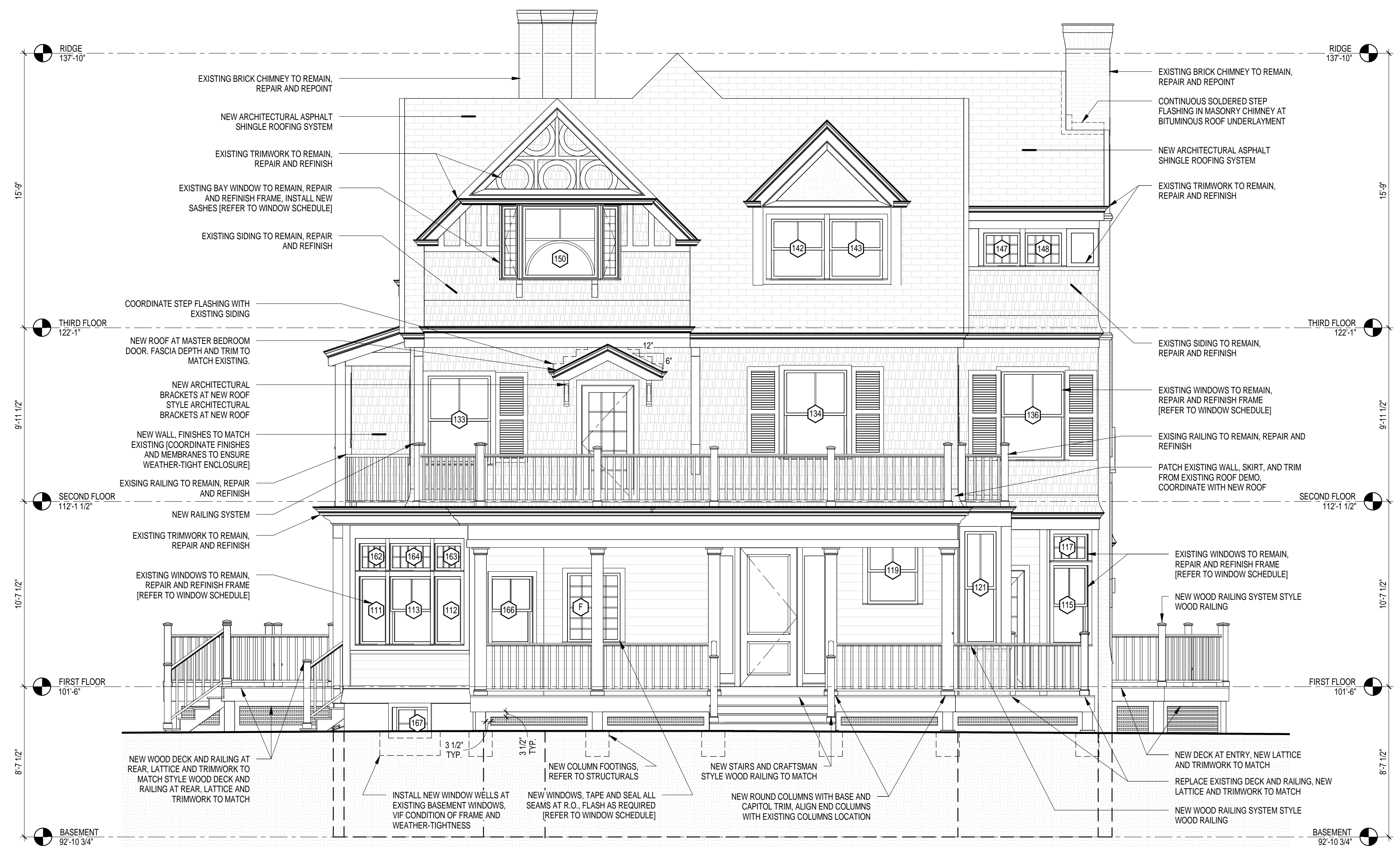
Date:	REV.	DATE	DESCRIPTION	WFL
12-18-14				

PRELIMINARY BID SET

PROPOSED ELEVATIONS

58 Eliot Street  
Boston, Massachusetts 02130

**A3.2**



1 Northeast - Proposed  
1/4" = 1'-0"

GENERAL NOTES

- REFER TO SHEET A3.1 FOR WINDOW TYPES
- ALL DIMENSIONS TO NEW WALLS ARE TO FACE OF STUD OR AS NOTED.
- ALL DIMENSIONS TO EXISTING WALLS ARE TO FINISH FACE.
- ALL WORK SHALL COMPLY WITH FEDERAL, STATE AND LOCAL BUILDING CODES AND REGULATIONS.

WINDOW NOTES

- WINDOWS TO BE MARVIN WINDOWS, UNLESS NOTED OTHERWISE
- ALL EXISTING WINDOWS TO REMAIN TO BE REPAIRED AND REFINISHED. **REPLACE ALL SASHES**, MATCH EXISTING SASHES.
- WINDOWS TAGGED WITH NUMBERS INDICATE EXISTING WINDOWS TO REMAIN; WINDOWS TAGGED WITH LETTERS INDICATE NEW WINDOWS.
- VERIFY ALL MODEL NUMBERS AND DIMENSIONS WITH MANUFACTURER
- SEE EXTERIOR ELEVATIONS FOR WINDOW HEAD HEIGHTS
- PROVIDE 1/2 SCREENS AT ALL OPERABLE UNITS
- PROVIDE PERMANENT DIVIDED LIGHT GRILLES WITH DARK INTERIOR SPACERS, SEE EXTERIOR ELEVATIONS FOR LOCATIONS AND PATTERNS, MUNTIN SIZE TO MATCH EXISTING WINDOWS

**Timothy Burke**  
ARCHITECTURE  
142 BERKELEY STREET, BOSTON, MASSACHUSETTS 02116  
P: 617.266.1332 | W: timothyburke.net | F: 617.266.1116



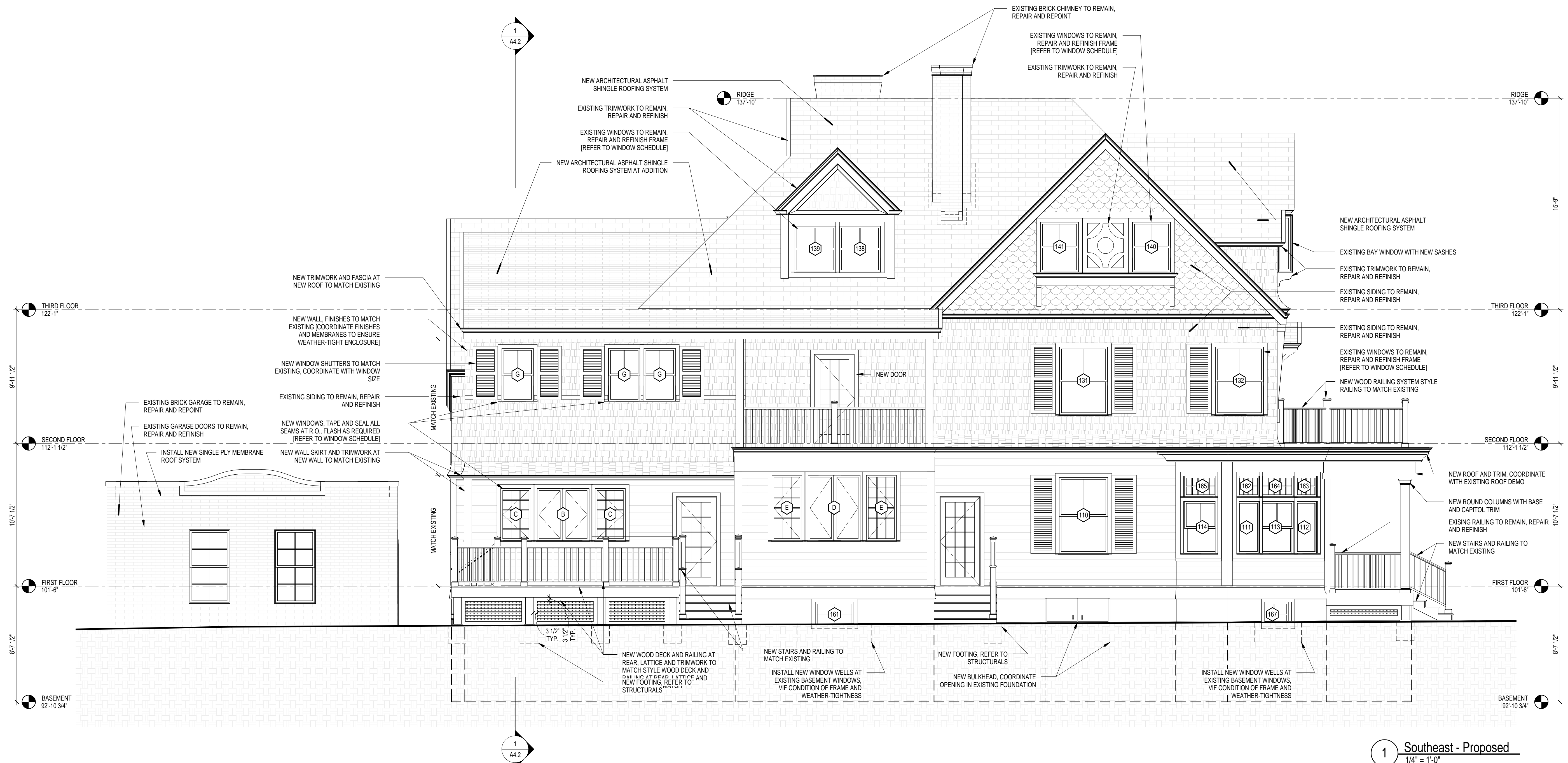
REV.	DATE	DESCRIPTION

PRELIMINARY BID SET

PROPOSED ELEVATIONS

58 Eliot Street  
Boston, Massachusetts 02130

A3.3



1 Southeast - Proposed  
1/4" = 1'-0"



**GENERAL NOTES**

- REFER TO SHEET A3.1 FOR WINDOW TYPES
- ALL DIMENSIONS TO NEW WALLS ARE TO FACE OF STUD OR AS NOTED.
- ALL DIMENSIONS TO EXISTING WALLS ARE TO FINISH FACE.
- ALL WORK SHALL COMPLY WITH FEDERAL, STATE AND LOCAL BUILDING CODES AND REGULATIONS.

**WINDOW NOTES**

- WINDOWS TO BE MARVIN WINDOWS, UNLESS NOTED OTHERWISE
- ALL EXISTING WINDOWS TO REMAIN TO BE REPAIRED AND REFINISHED. **REPLACE ALL SASHES**, MATCH EXISTING SASHES.
- WINDOWS TAGGED WITH NUMBERS INDICATE EXISTING WINDOWS TO REMAIN; WINDOWS TAGGED WITH LETTERS INDICATE NEW WINDOWS.
- VERIFY ALL MODEL NUMBERS AND DIMENSIONS WITH MANUFACTURER
- SEE EXTERIOR ELEVATIONS FOR WINDOW HEAD HEIGHTS
- PROVIDE 1/2 SCREENS AT ALL OPERABLE UNITS
- PROVIDE PERMANENT DIVIDED LIGHT GRILLES WITH DARK INTERIOR SPACERS, SEE EXTERIOR ELEVATIONS FOR LOCATIONS AND PATTERNS, MUNTIN SIZE TO MATCH EXISTING WINDOWS

**Timothy Burke**  
ARCHITECTURE  
142 BERKELEY STREET, BOSTON MASSACHUSETTS 02116  
P: 617.266.1332 | W: timothyburke.net | F: 617.266.1116



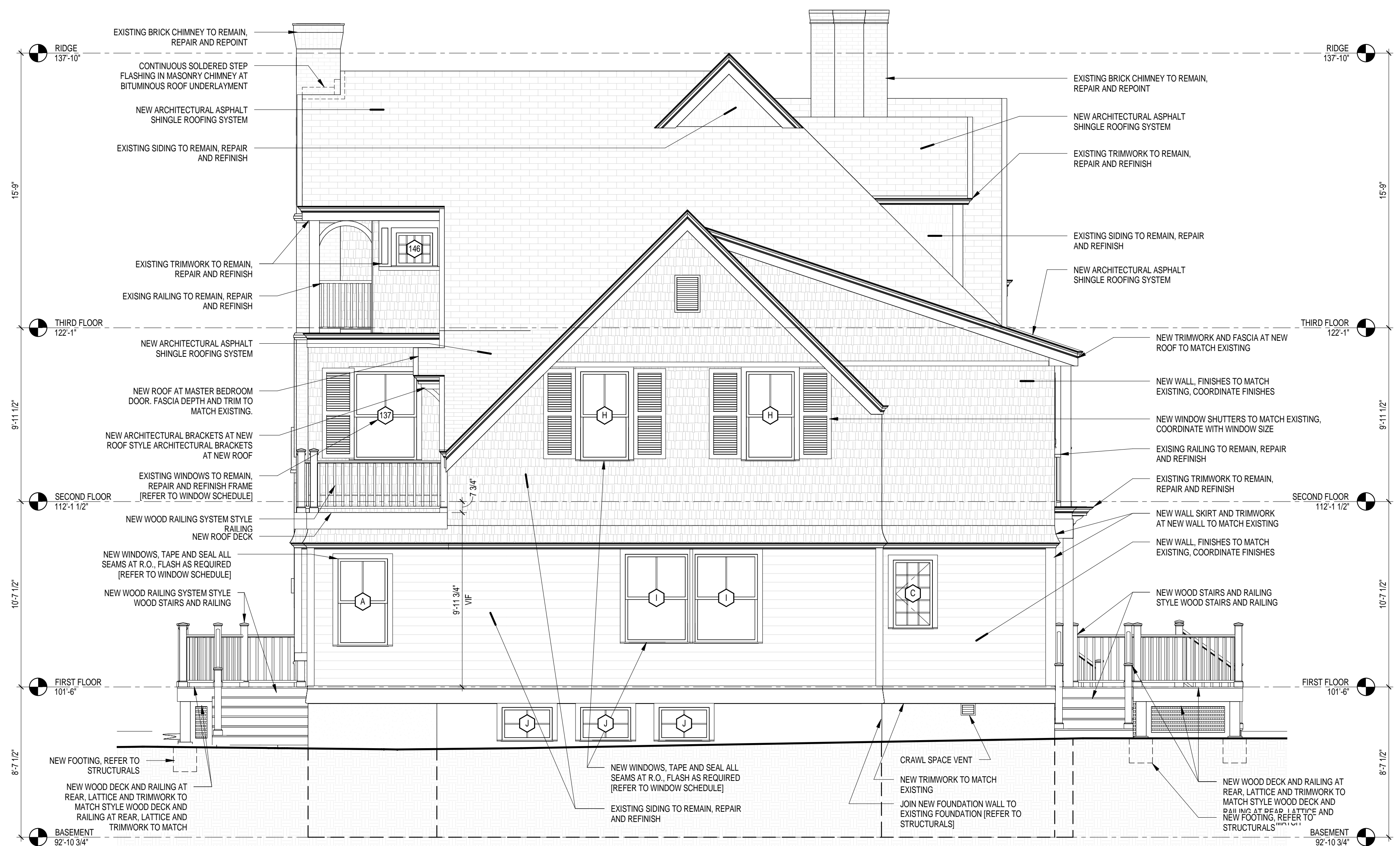
DATE	REV.	DESCRIPTION	WFL
12-18-14			

PRELIMINARY BID SET

PROPOSED ELEVATIONS

58 Eliot Street  
Boston, Massachusetts 02130

**A3.4**



1 Southwest - Proposed  
1/4" = 1'-0"