

A-B Mobility Oak Square Neighborhood Meeting Summary

March 5th, 2020 at the PSF Community Center

At this community meeting, attended by nearly 100 area residents and merchants, participants were first presented with a “Toolbox” of potential mobility and placemaking improvements to consider for Oak Square. These included such improvements as raised crosswalks, curb extensions, flex zones, parking meters, ADA ramps, and more. The “Toolbox” is shown on the first slide below.

Next, once participants had formed small groups of between 6 and 12 persons, BPDA/City staff facilitators guided discussion, suggestions and comments with the following prompts:

1. Name at least one thing they would like to see changed in Oak Square to improve mobility and/or placemaking.
2. Place game pieces (comprised of individual photographs of the multiple improvements from the Toolbox) on the aerial based map of Oak Square to reflect their ideas and suggestions. Participants were also invited to use magic markers to write down, draw and otherwise suggest ideas and/or add notes.

The following scanned images show the results of this exercise for each of the 8 breakout groups.



Transportation Toolbox



Bicycle Lane



ADA Ramps



Widen Sidewalks



Curb Extension



Raised Crosswalk



On-Street Parking



Improve Visibility



Ped. Warning Signs



Flex Zones



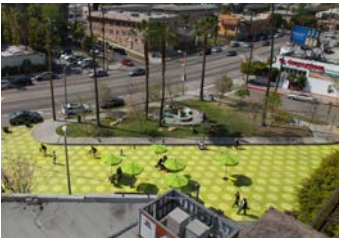
Bus Lane



Bluebikes



Bus Shelter



Tactical Plaza



Parking Meters



Crosswalk



Bike Parking



Oak Square - Allston/Brighton

Workshop Table #2

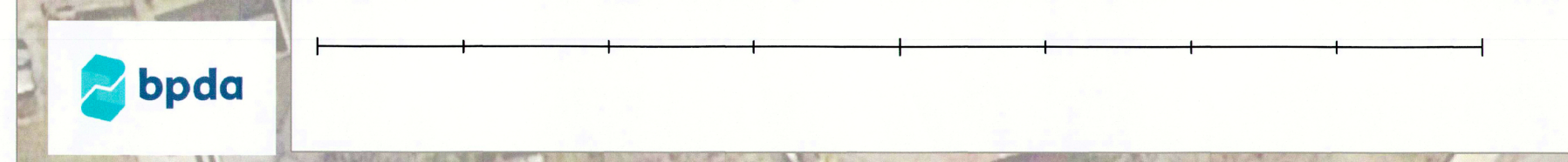
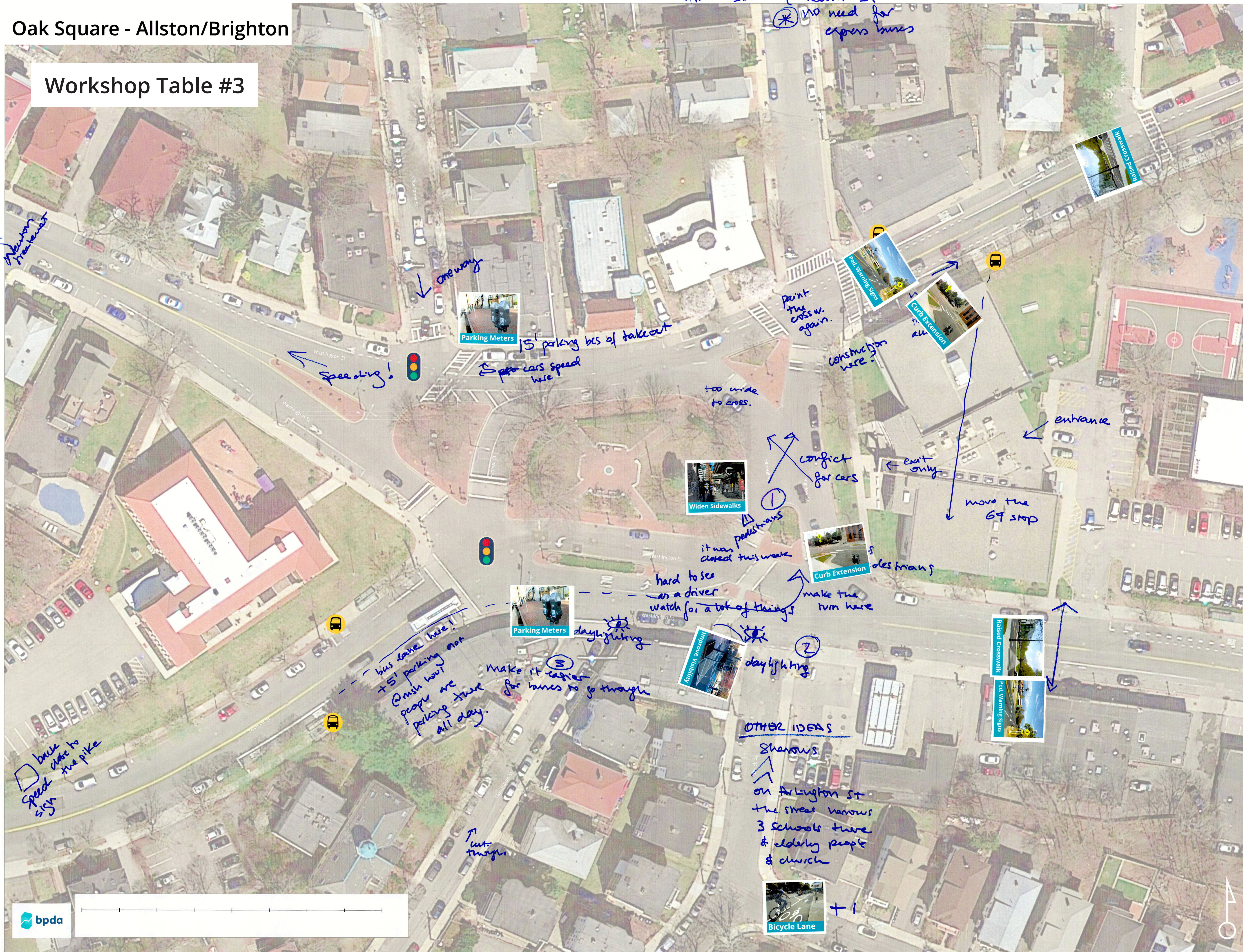
Facilitator:
Conor



Oak Square - Allston/Brighton

Workshop Table #3

ROSA 2



Workshop Table #5



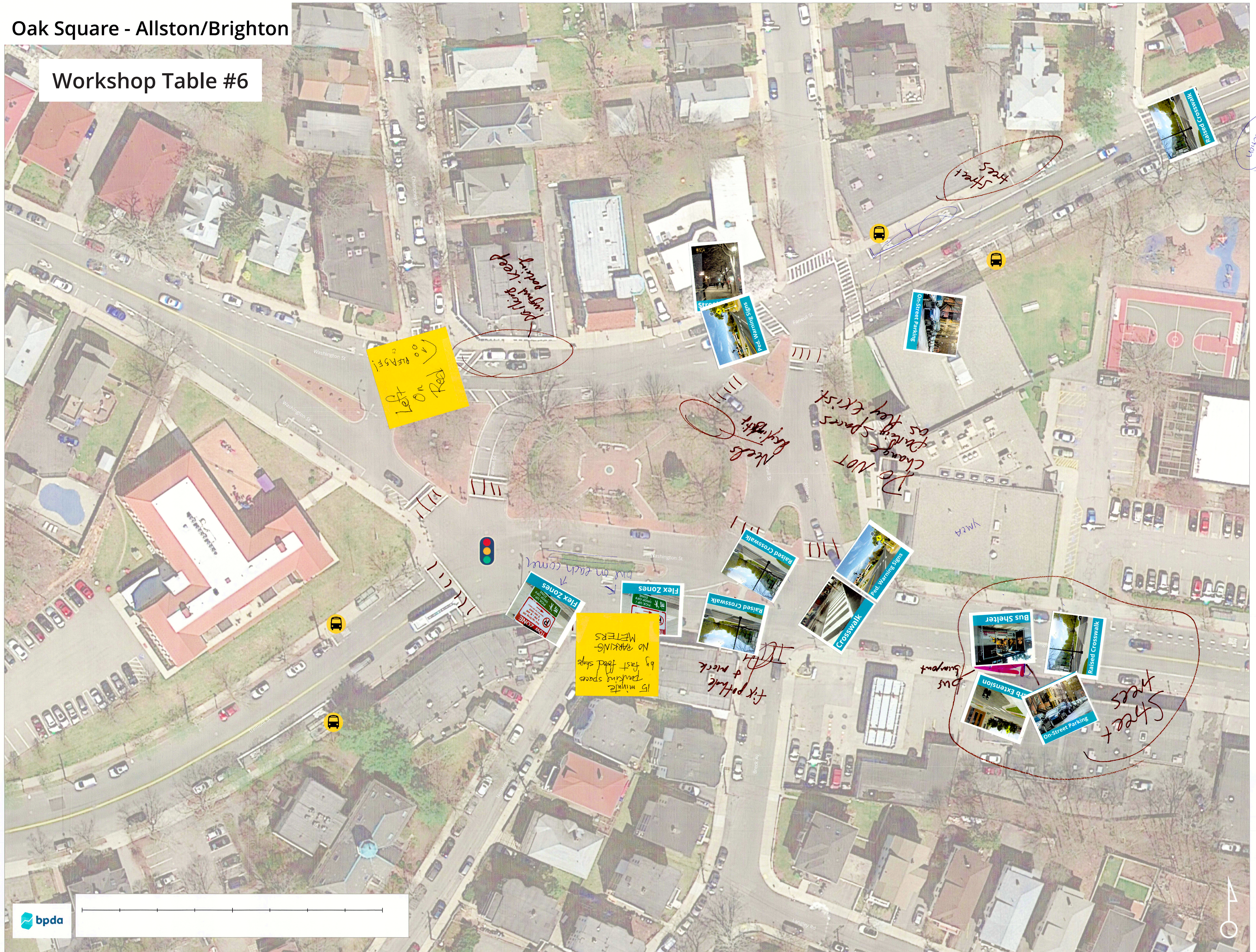
FAVORITE: CHARLOTTE

community feel
parking spots
community features
walkable small square
summer green
ped neighborhood feeling
greenway good sidewalks
bus connectivity: SF, SO
kind of houses
pine to get outside
different feel to downtown



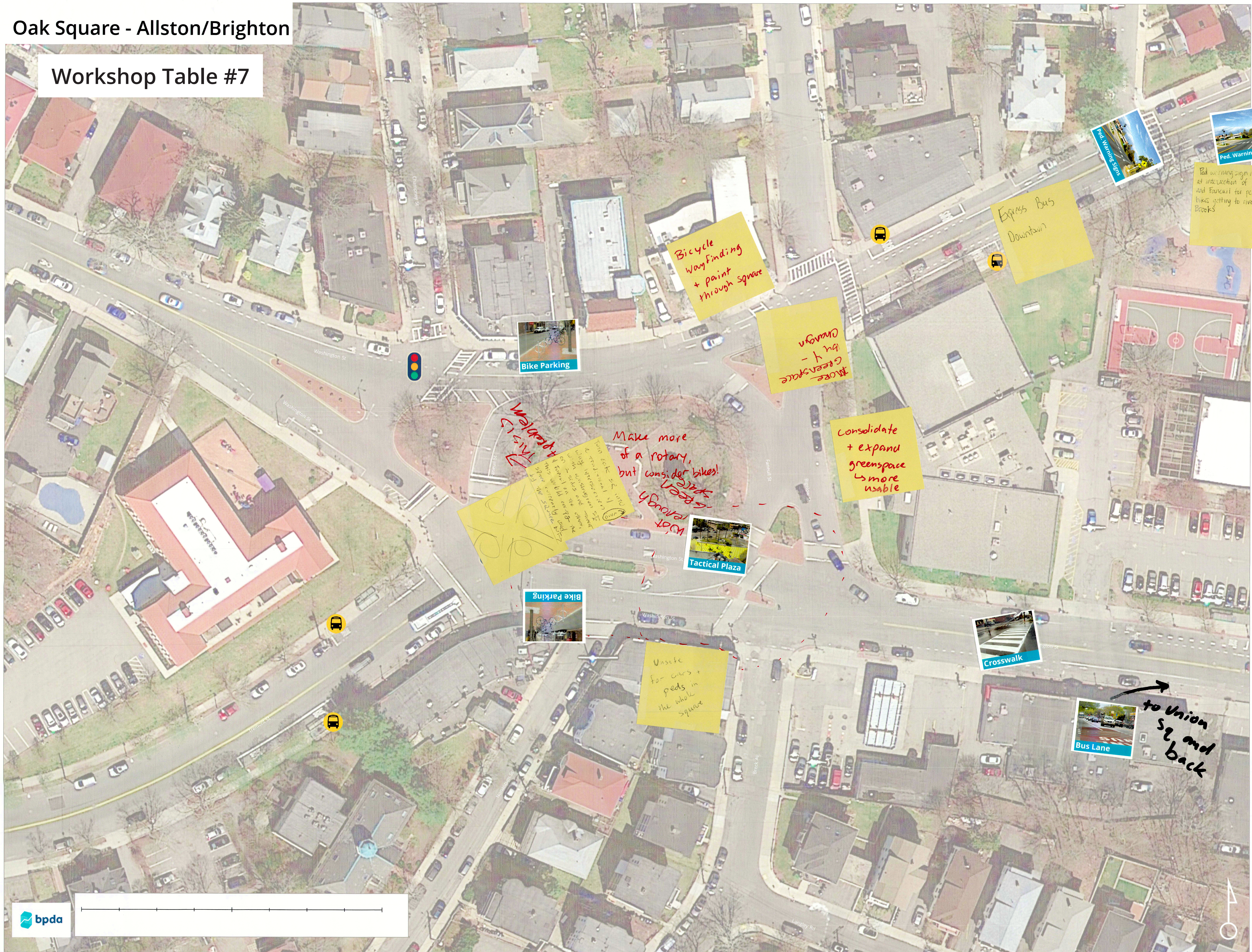
Oak Square - Allston/Brighton

Workshop Table #6



Oak Square - Allston/Brighton

Workshop Table #7



Bicycle wayfinding + paint through square

Express Bus Downtown

More Greenspace - 1/4 - 1/2 acre

Consolidate + expand greenspace - more usable

Make more of a rotary, but consider bikes!

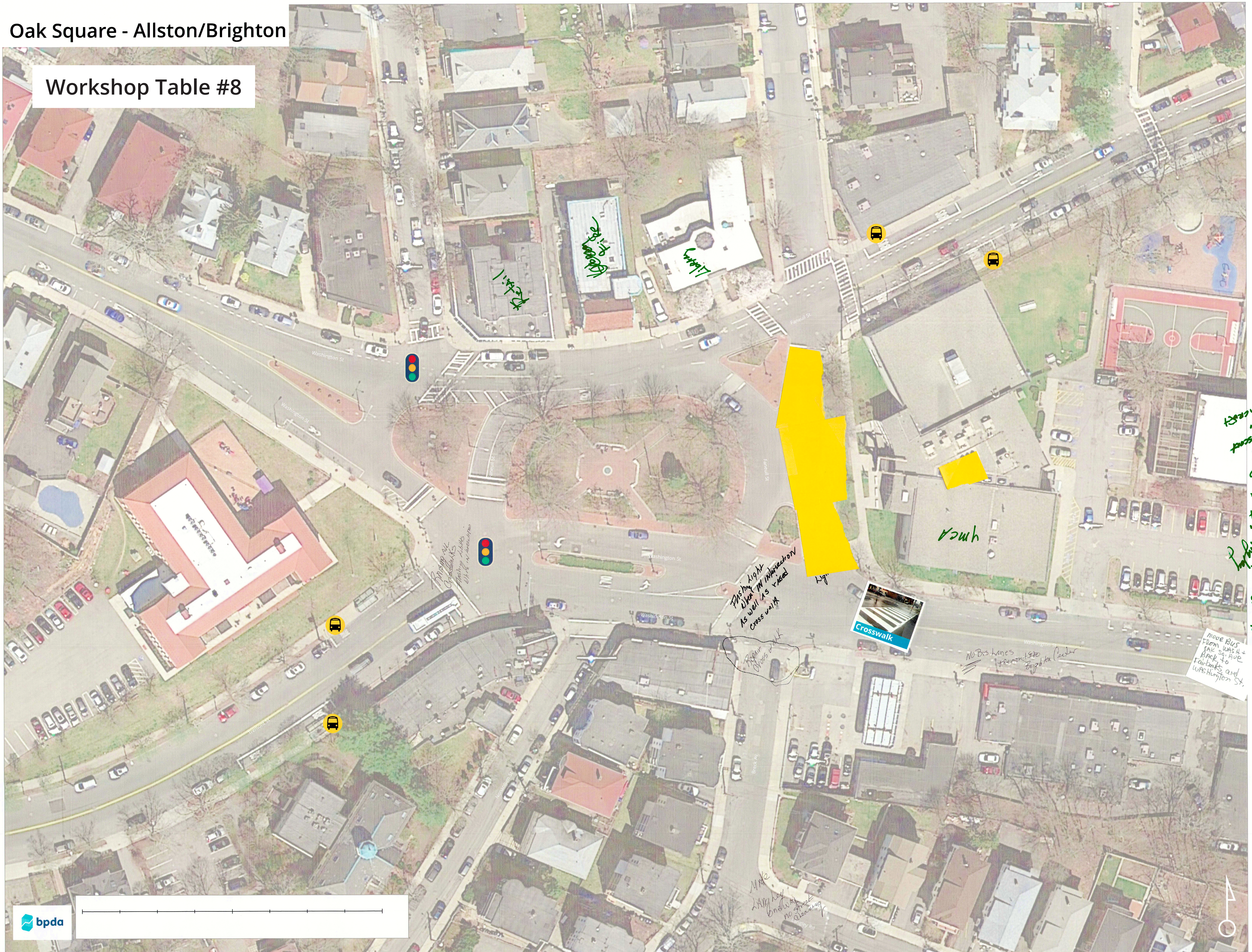
Vasite for cars + peds in the whole square

Ped warning signs needed at intersection of Brooks and Forest for peds and bikes getting to river via Brooks

to Union St and back

Oak Square - Allston/Brighton

Workshop Table #8



*1.5 ft x 1.5 ft
1000 sq ft
Lobby*

Ymca

*The MIGHT
What if intersection
cross walk*

Crosswalk

*No bus lanes
from state
Engle for Center*

*move bus
from was at
back of ave
Fairbank and
Washington St*

*President
Helen
Hobart
O'Shea
from
the
N. Cross
St
from
Broad
St
to
Cross
St*

*Make
Lobby
broadway
no street
clearway*

