

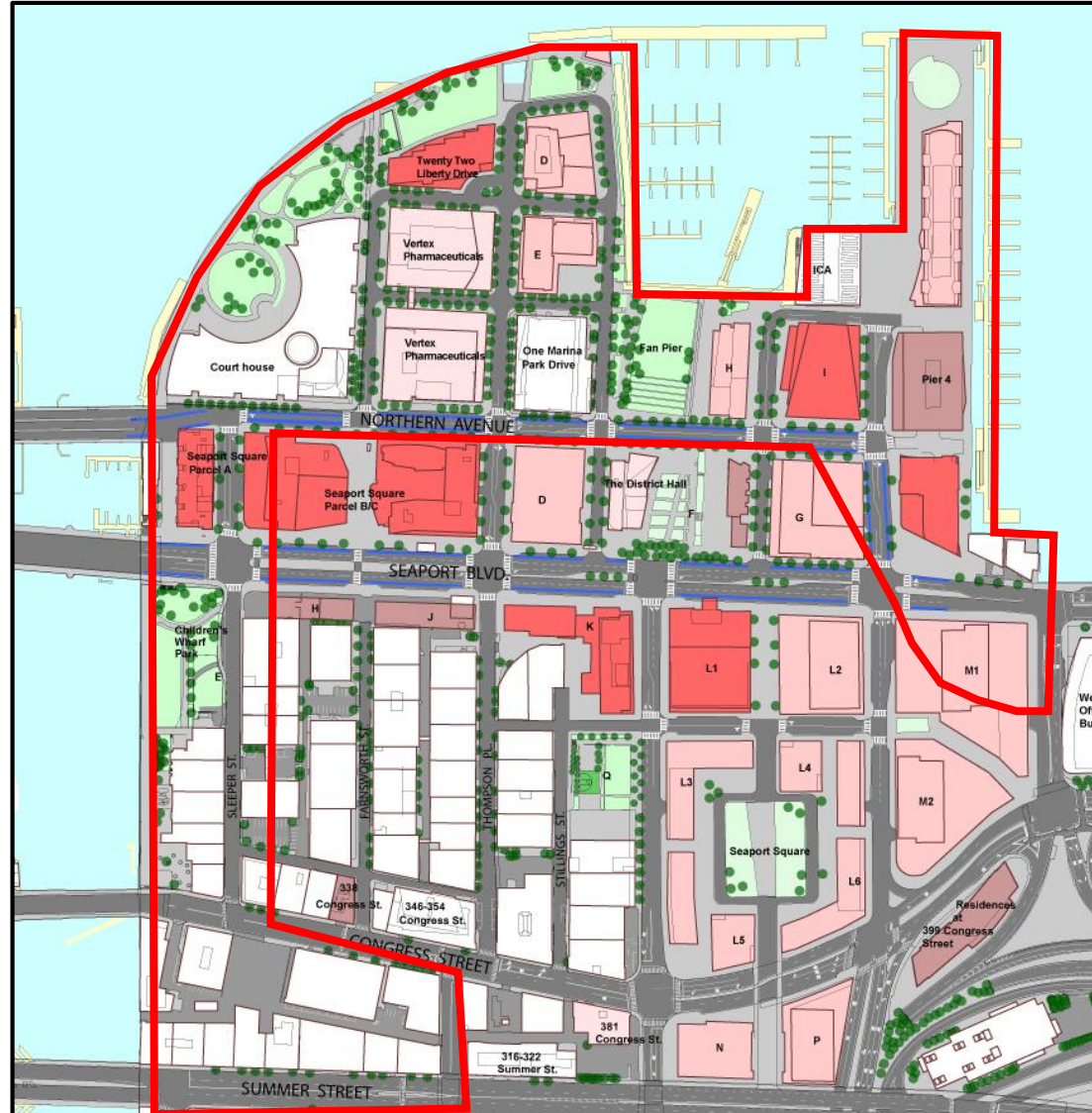
# South Boston Waterfront District Municipal Harbor Plan Renewal and Amendment

March 16, 2016



## Offset Priorities

- Martin Richard Park – design and construction
  - Northern Avenue Bridge Gateway – hardscape improvements; pocket park
  - Water Commons – activation and programming
  - Public Realm Improvements – adjacent to 150 Seaport Boulevard
  - Enhanced Harborwalk – above baseline requirements
  - Water Transportation Subsidies – above baseline requirements; access to Harbor Islands
- 
- Support of Civic & Cultural Space
  - Watersheet Programming









# 150 Seaport Boulevard Substitutions

- WDUZ – Reconfiguration: 208 SF
- Height – Shadow: 16,640 SF
- Lot Coverage/Open Space: 3,374 SF

SF delineations approximate

