



PEOPLE

POPULATION

- In 2025, Brighton had **55,869** residents, representing **7.8%** of Boston's population.

AGE


- In 2025, over **2 in 4** Brighton residents were aged 18-34, compared to 42% of Boston residents citywide.


AGE GROUP DISTRIBUTION

Boston and Brighton Population by Age Group, 2025

| | 0 - 17 | 18 - 34 | 35 - 59 | 60+ |
|----------|--------|---------|---------|-------|
| Boston | 13.2% | 42.2% | 26.5% | 18.1% |
| Brighton | 7.3% | 59.7% | 18.5% | 14.5% |

DIVERSITY

 **26.5%** of Brighton residents were foreign born in 2025, compared to 27.3% citywide.

 **32.8%** spoke a language other than English at home and Chinese and Spanish were the languages most commonly spoken.

RACE/ETHNICITY DISTRIBUTION

Boston and Brighton Population by Race/Ethnicity, 2025

| | Asian/PI | Black/AA | Hispanic/Latino | White | Others |
|----------|----------|----------|-----------------|-------|--------|
| Boston | 11.8% | 18.4% | 18.3% | 45.2% | 6.3% |
| Brighton | 17.5% | 4.9% | 10.6% | 61.4% | 5.6% |

Asian/PI: Asian or Pacific Islander, Black/AA: Black or African American.

- In 2025, Brighton had larger Asian/Pacific Islander and White populations relative to Boston citywide.

EDUCATION

- 73.0%** of Brighton residents aged 25+ had a bachelor's degree or higher, compared to 55.7% citywide.
- 21.8%** of Brighton residents were enrolled in college or university.
- 3,443** Brighton students lived in dorms in 2020.

HOUSEHOLDS

- Of Brighton's **24,644** households:
 - 30.7%** family households
 - 41.6%** one-person households
 - 27.7%** non-family households with 2+ people



ECONOMY

JOBS

- In 2023, Brighton had **18,097** payroll jobs, making up 2.5% of Boston's payroll jobs.
 - 31.6%** of payroll jobs were in the Health Care and Social Assistance industry.
 - 17.0%** were in the Administration & Support, Waste Management & Remediation industry

LABOR FORCE

- 6.8%** of Brighton payroll workers live and work in Brighton.
- 20.2%** of Brighton resident workers report working primarily from home.

INCOME

- In 2025, Brighton's median household income was **\$86,860**, lower than Boston's of \$94,438.

SPENDING

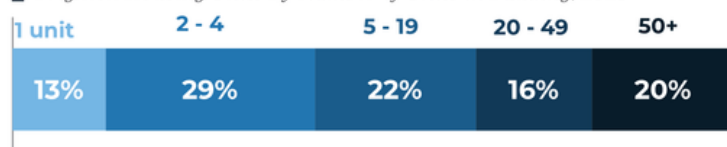
- Brighton's 2025 total in-person consumer spending was **16.6%** above 2019 levels but **3.8%** below 2024 levels.
- Brighton's restaurant spending was down **14.9%** from 2019.



PLACE

HOUSING UNITS BY STRUCTURE TYPE

Brighton Housing Units By Number of Units in Building, 2025



HOUSING

- Of the **25,805** housing units in Brighton:



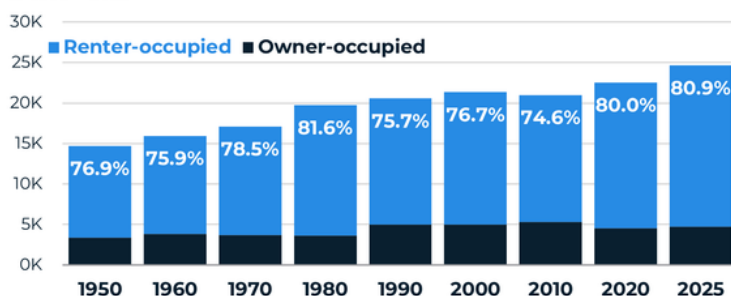
- 39.7%** 0-1 bedrooms
- 32.6%** 2 bedrooms
- 27.7%** 3+ bedrooms

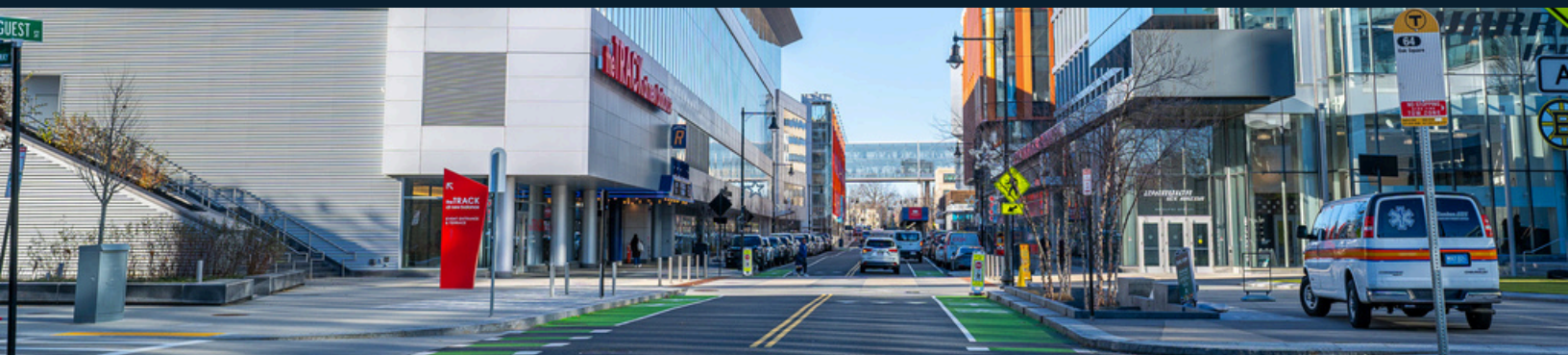
RENTERS AND OWNERS

- 80.9%** of housing units were renter-occupied, compared to 64.4% of units citywide.
- In 2024, median asking rent for market-rate 2-bed apartments was **\$2,895** in Brighton and \$3,200 citywide.

BRIGHTON OCCUPIED HOUSING UNITS BY TENURE

1950 - 2025





MOBILITY

VEHICLES



33.3% of Brighton households had 0 vehicles.

TRANSPORTATION

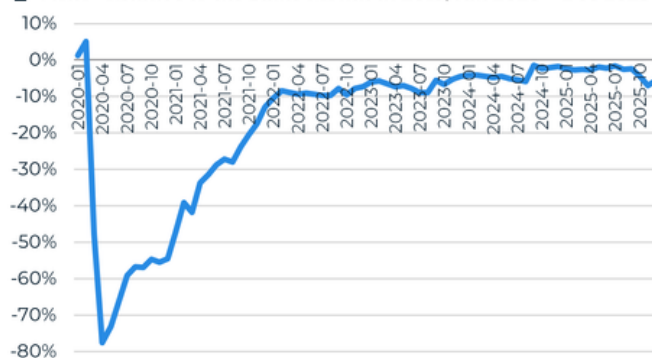
- In 2025, to get to work:
 - **42.0%** of Brighton resident workers drove or carpoled, **29.1%** took public transit, **5.9%** walked, and **3.0%** took a bike, taxicab, motorcycle, or other means.
- In 2024, Fall bus ridership for an average weekday in Brighton was **84.6%** of its level in Fall 2019.

VISITS

- Monthly visits to Brighton saw a sharp pandemic-related drop in the spring months of 2020.
- In 2022, visits began to approach levels within 10% of pre-pandemic months.
- By 2024, visits to Brighton were down 3.9% from their level in 2019.
- Visits in 2025 were 3.1% lower than in 2019.

MONTHLY VISITS* TO BRIGHTON COMPARED TO 2019

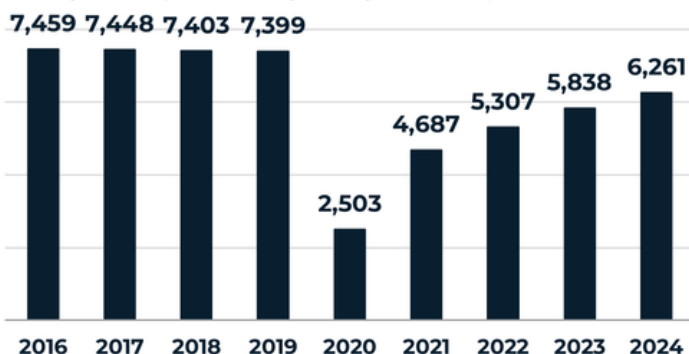
Visits* Relative to the Same Month in 2019, Jan 2020 - Dec 2025



*Visits are defined as crossings from outside to inside Brighton boundaries. Event-related visitation peaks are not included.

DAILY BUS BOARDINGS IN BRIGHTON ON WEEKDAYS

Average Weekday Bus Boardings at Brighton Bus Stops, Fall 2016 - Fall 2024





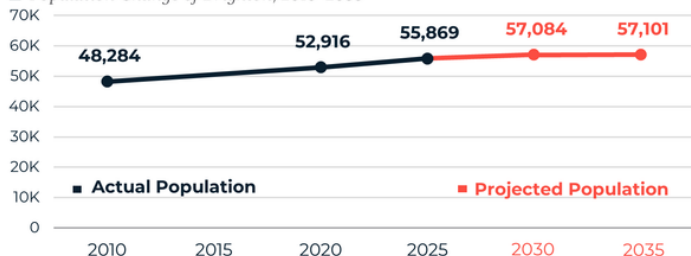
TRENDS

POPULATION GROWTH

- Between 2010 and 2025, Brighton's population grew by **1.0%** per year.
- Growth is projected to slow to **~0.2%** per year through 2035.

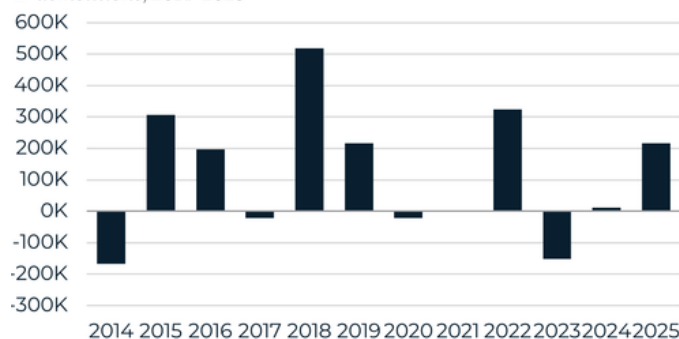
BRIGHTON POPULATION CHANGE

Population Change of Brighton, 2010-2035



NON-RESIDENTIAL COMPLETIONS

Non-residential square footage completed in Brighton, net of demolitions, 2014-2025

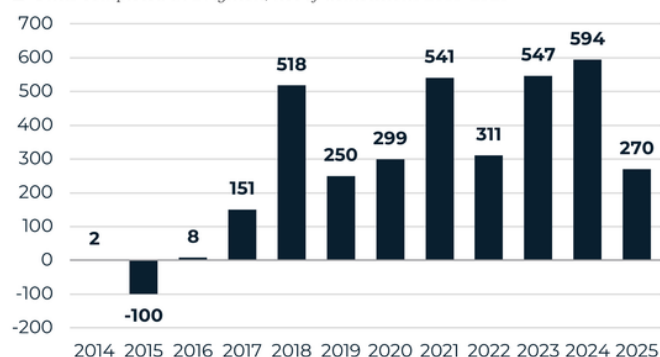


REAL ESTATE DEVELOPMENT

- From 2020 to 2025:
 - **380,673** net new square feet of non-residential was completed.
 - **2,562** net new units of housing were completed.

TOTAL HOUSING UNITS COMPLETED

Units completed in Brighton, net of demolitions 2014-2025



LEARN MORE

Learn more about Boston's neighborhoods with the Research Division's interactive tools:

- www.bostonplans.org/research/mydemographic-viewer
- www.bostonplans.org/research/exploring-neighborhood-change

For more resources, including reports, interactive tools, and more, scan the QR Code!