



July 23rd, 2019







2013



2019

Development Status Overview



-  Completed
-  Under review
-  To be submitted soon
-  Future projects

Rental and Homeownership

 Rental

B:
Units: 60
Parking: 72

A:
Units: 60
Parking: 54

D:
Units: 52
Parking: 17

F5:
Units: 44
Parking: 26

 Homeownership

E:
Units: 16
Parking: 16

F2:
Units: 28
Parking: 30

F4:
Units: 37
Parking: 32

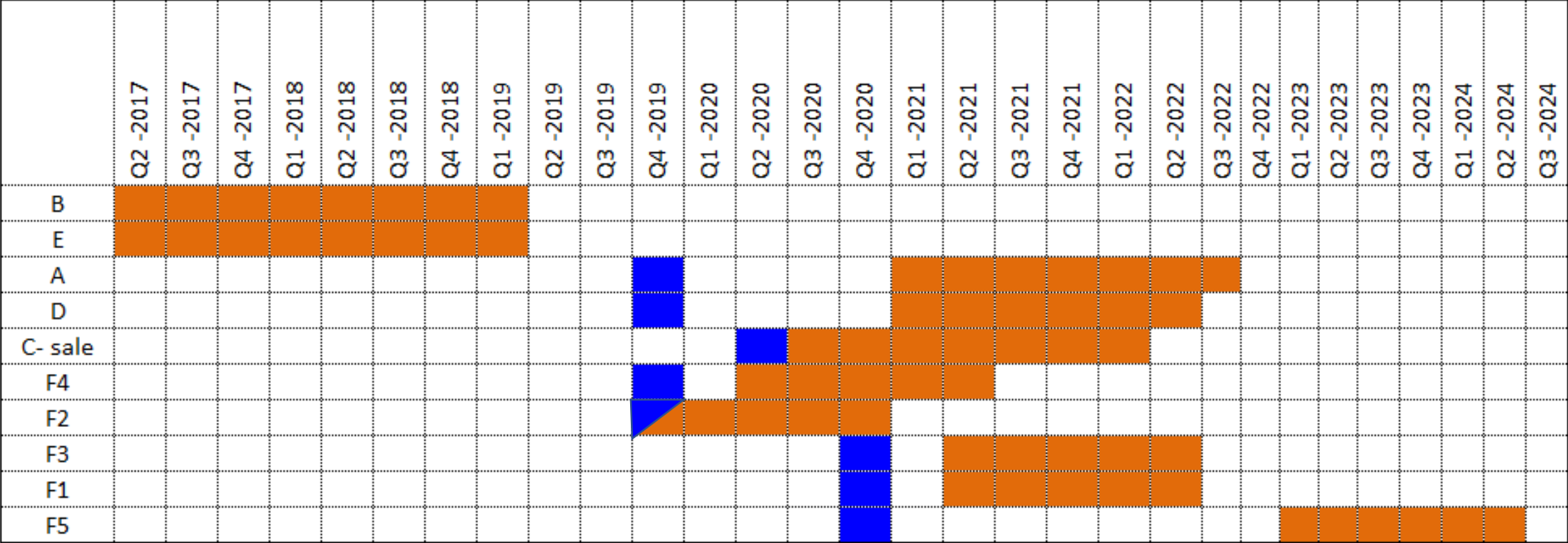
C:
Units: 61
Parking: 48

F1:
Units: 16
Parking: 16

F3:
Units: 8
Parking: 8



Sequence Construction and permitting



 Zoning approval

 Construction

Jobs for Local Workers

Construction will employ 900 construction workers. Workers of color will fill 60% of the construction jobs.

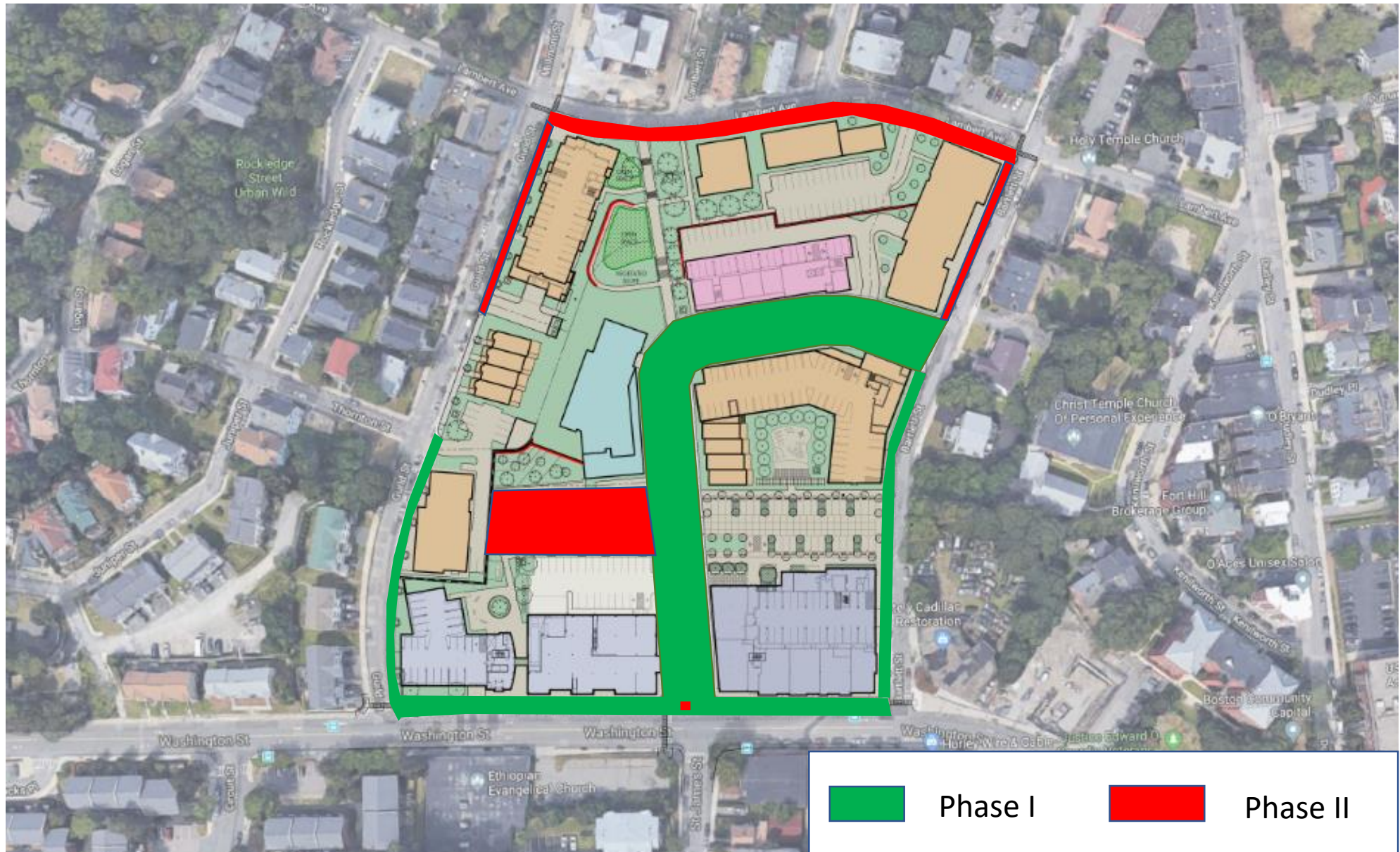
Construction to date	Building B	Building E
Workers of color	65%	87%
Boston residents	44%	58%
Women workers	.6%	.6%

The retail will create up to 100 permanent jobs.

Commercial Leasing

- Over 30,000 SF of stores and commercial space on Washington Street.
- Marketing prioritizes local, healthy retail, complementary to existing retail.
- Plus high-rent paying businesses to subsidize lower rents for local businesses.
- Over past 5 years, we contacted over 34 local or regional businesses or startups.
- At Building B: agreements in place with Good Food Markets grocery and a fitness center; negotiations ongoing with a community bank.

MassWorks Infrastructure



Bartlett B completed



Bartlett E completed



Bartlett A- under review



Bartlett D- under review



Bartlett F2 under design



Bartlett F4 under design



PLAZA under design





Q&A

Birdseye



Bartlett Station Drive to Lambert Ave



Bartlett Station Drive to Lambert Ave Pathway



Bartlett Station Drive from Washington St



Plaza



Lambert Ave to Bartlett Station Drive Pathway



“Living Street” between A and C

