

C O R C O R A N
J E N N I S O N
Companies

December 1, 2016

Hi Lance,

Please see the attached Bayside DoubleTree Hotel expansion plan that was approved by the BRA and our plan with proposed changes. In summary these are the proposed changes:

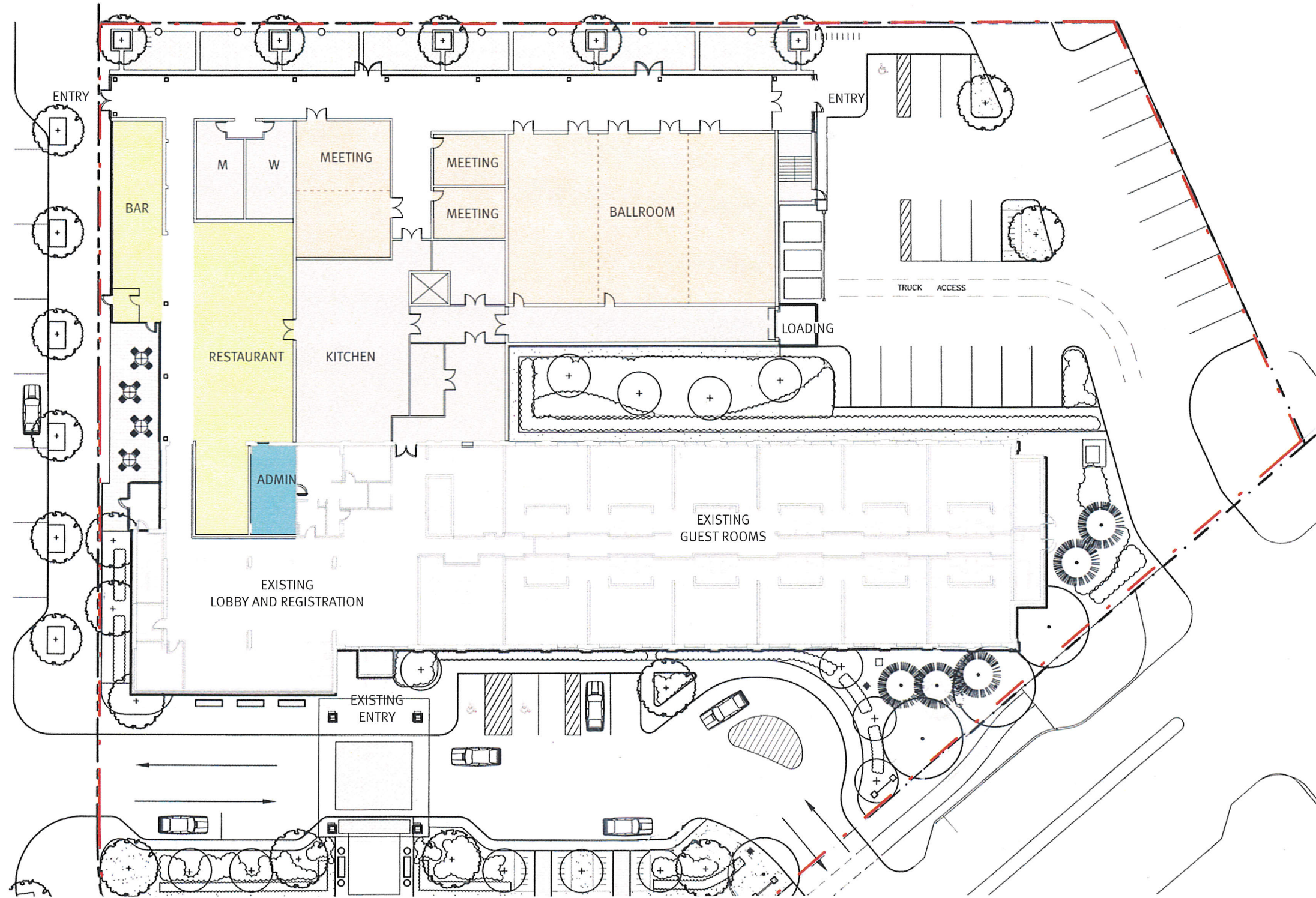
- The ballroom moved from the back right side of the addition to the back left side of the addition.
- The restaurant moved from the addition to the existing hotel lobby area.
- The footprint of the addition was reduced in size from the BRA approved 19,281 square feet to 17,259 square feet i.e. 2,022 square feet less.
- The BRA approved Gross Floor Area of 69,500 increased by 1,400 square feet to a Gross Floor Area of 70,900 GFA.
- The net increase in hotel guest rooms from the approved plan is 7 guest rooms, 97 guest room approved and 104 guest rooms proposed.

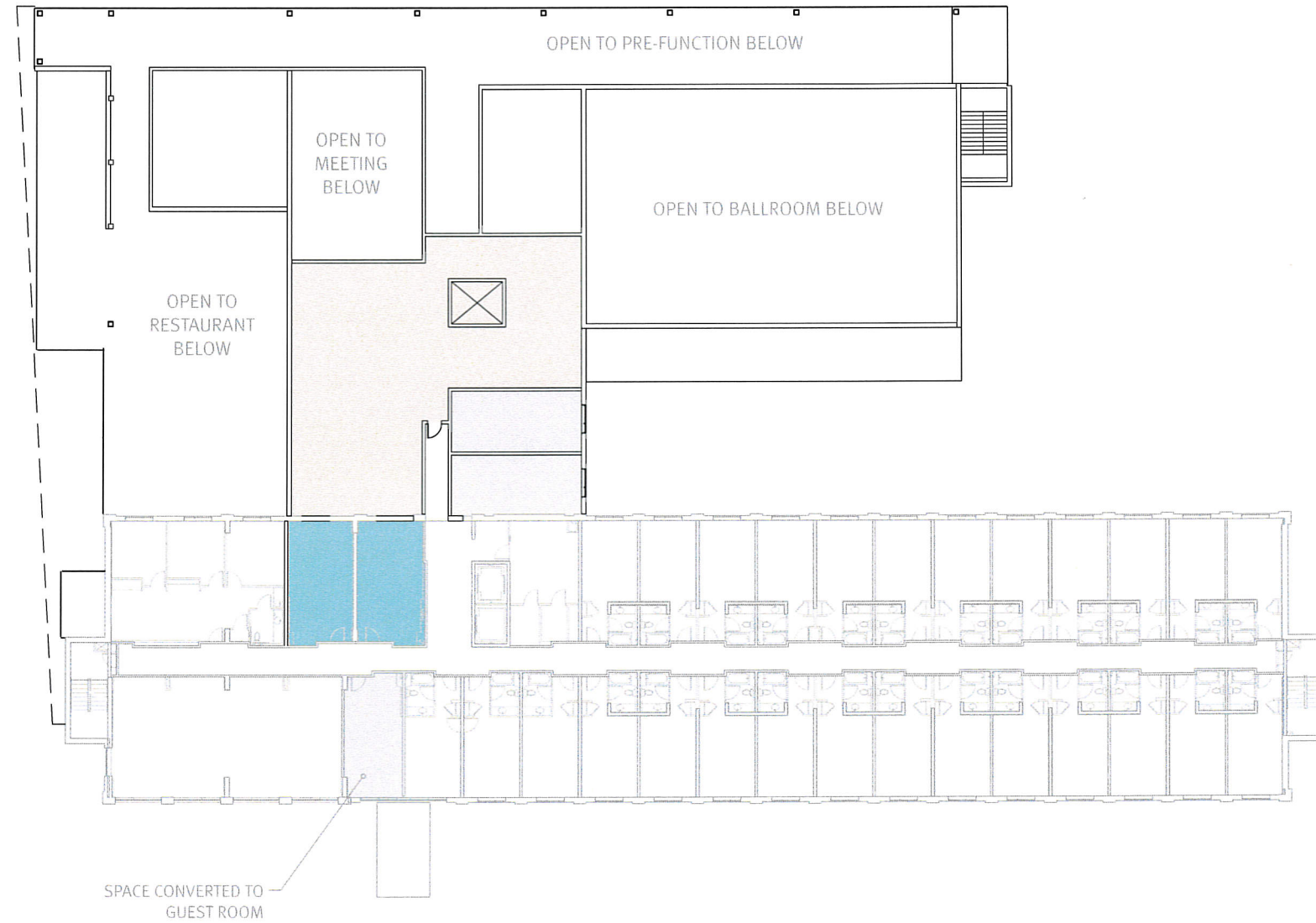
Please let me know if you have any other questions.

Thanks,



Michael Corcoran



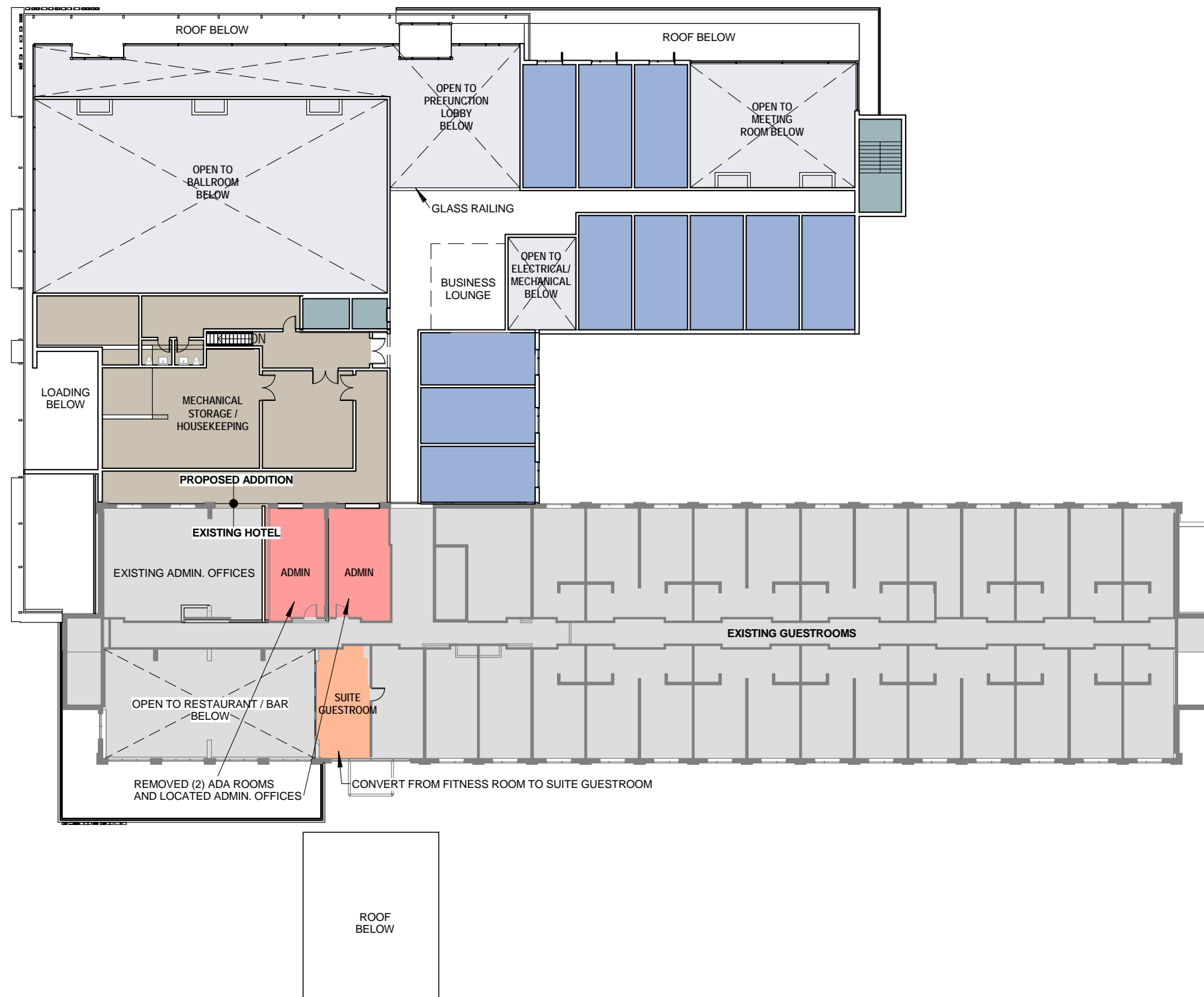




- ROOMS
- SUPPORT
- OFFICE



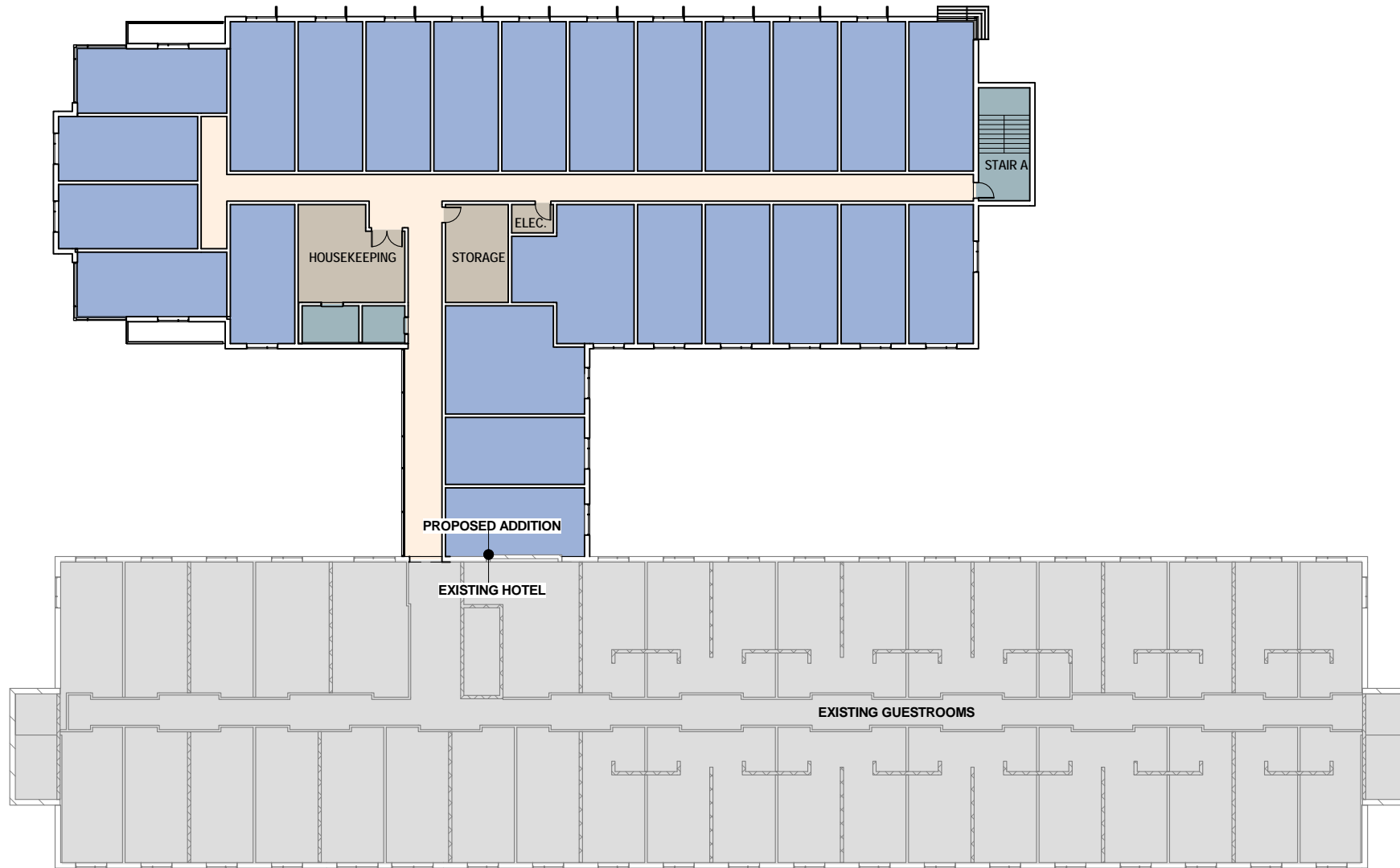






ROOM USE LEGEND

- ROOMS
- SUPPORT
- CIRCULATION
- VERTICAL CIRC
- FITNESS CENTER



ROOM USE LEGEND

- ROOMS
- SUPPORT
- CIRCULATION
- VERTICAL CIRC



ROOM USE LEGEND

- ROOMS
- SUPPORT
- CIRCULATION
- VERTICAL CIRC
- SUITE







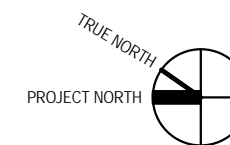


MOUNT VERNON EXTENSION (FUTURE)



ROOM USE LEGEND

- OFFICE
- FUNCTION ROOM
- RESTAURANT
- KITCHEN
- RETAIL
- RESTROOMS
- SUPPORT
- ROOM KING
- VERTICAL CIRC
- CIRCULATION
- OPEN TO BELOW
- EXISTING





ROOM USE LÉGEND

- OFFICE
- FUNCTION ROOM
- RESTAURANT
- KITCHEN
- RETAIL
- RESTROOMS
- SUPPORT
- ROOM KING
- VERTICAL CIRC
- CIRCULATION
- OPEN TO BELOW
- EXISTING



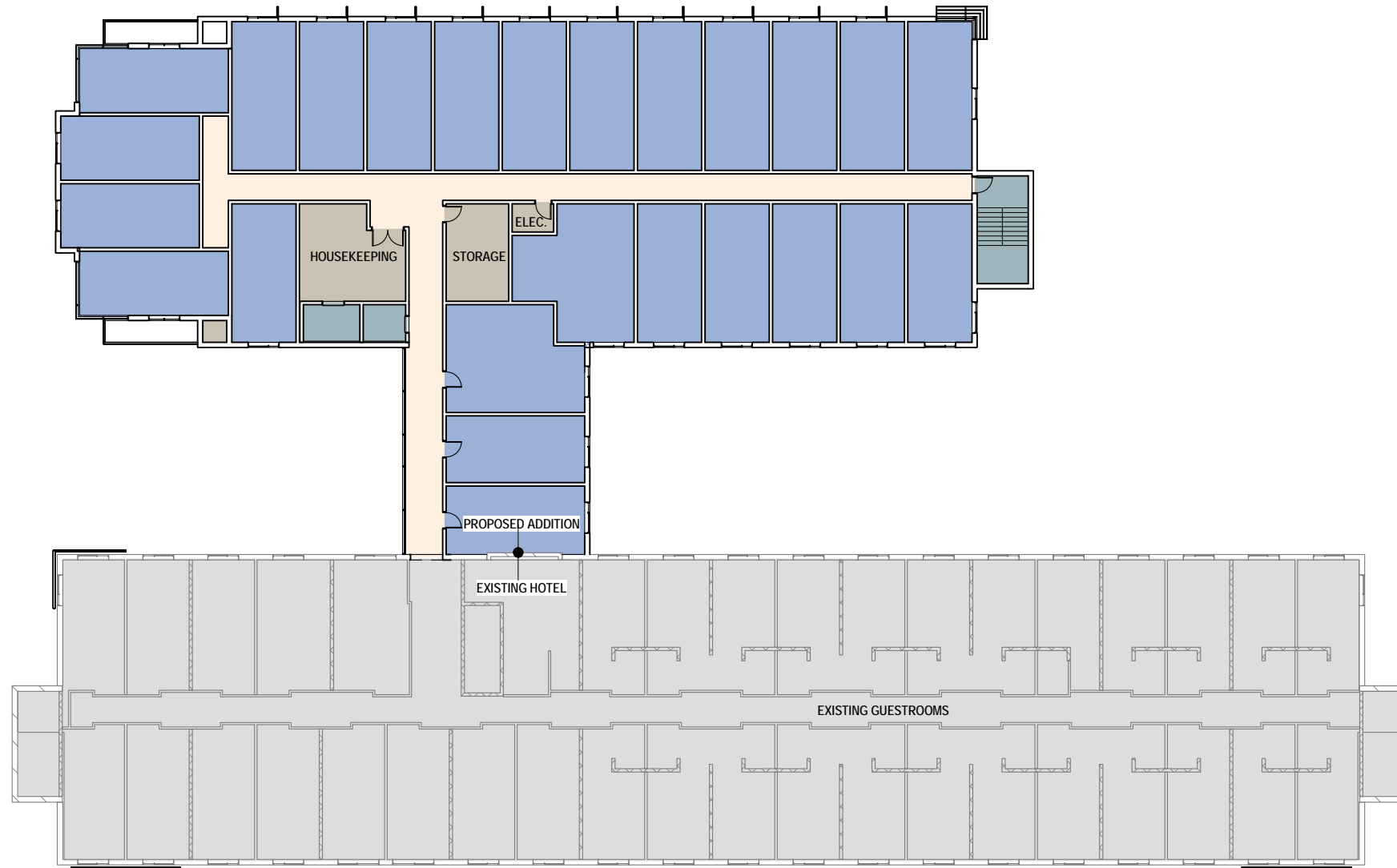
ROOM USE LEGEND

- OFFICE
- SUPPORT
- ROOMS
- SUITE
- VERTICAL CIRC
- CIRCULATION
- OPEN TO BELOW



ROOM USE LEGEND

- FITNESS CENTER
- SUPPORT
- ROOMS
- VERTICAL CIRC
- CIRCULATION



ROOM USE LEGEND

- SUPPORT
- ROOMS
- VERTICAL CIRC
- CIRCULATION



ROOM USE LEGEND

- SUPPORT
- ROOMS
- SUITE
- VERTICAL CIRC
- CIRCULATION