

PLAN: Mattapan - Avni Koridò Mattapan yo



26 Fevriye 2020

6:00 - 6:15

Ouvèti

6:15 - 6:45

Prezantasyon

6:45 - 7:30

Aktivite ak Diskisyon



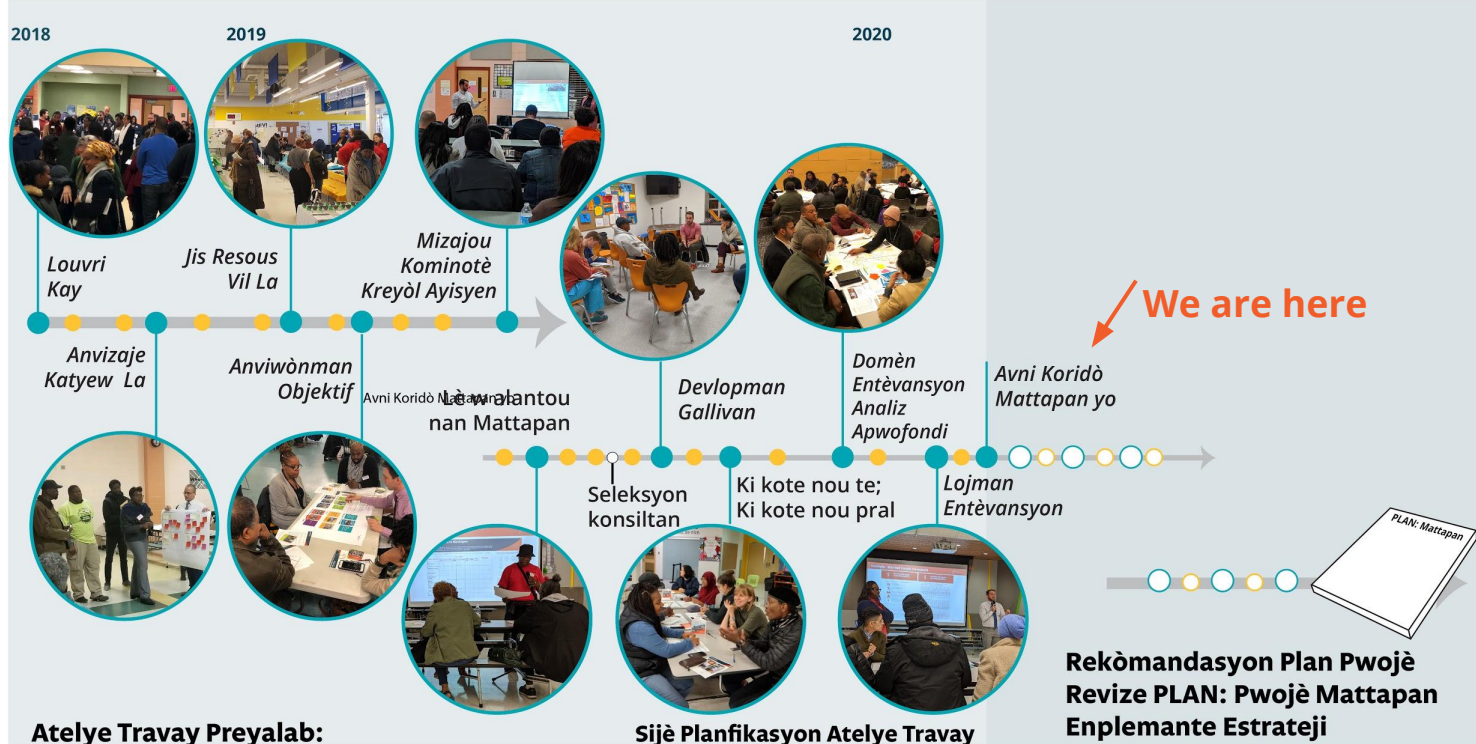
1

Ki kote nou
ye kounye a



KISA NOU TE FE

PWOCHEN PWOSESIS



● ATELYE TRAVAY

● AKTIVITE ANGAJMAN KOMINOT
Pale avèk yon planifikatè
Piblisite ak/oswa Aktivite Kominotè

○ PWOCHEN ATELYE TRAVAY

○ PWOCHEN AKTIVITE ANGAJMAN KOMINOT

PLAN: MATTAPAN PRAL...

**“ Ranfòse kilti ak estabilite kominote a ki egziste
deja nan sipòte lojman a bon mache, kreye
opòtinite pou biznis yo pwospere, ak amelyore
koneksyon yo pou amelyore eksperyans katye a
pou gen aksè nan espas kote moun yo rasanble. ”**

PLAN: MATTAPAN PRAL

“ Ranfòse kilti ak estabilite kominote a ki egziste
deja nan sipòte **lojman a bon mache**, kreye
opòtinite pou **biznis** yo pwospere, ak amelyore
koneksyon yo pou amelyore eksperyans katye a
pou gen **aksè nan espas kote moun yo rasanble.** ”

Chak zòn konsantrasyon ap ede reyalize vizyon an nan yon fason ki diferan.



Corridor



Square



Residential Fabric

Chak zòn konsantrasyon ap ede reyalize vizyon an nan yon fason ki diferan.



Corridor



Square



Residential Fabric

02 Aktivite

Etap 1:

Instructions (5 mins)
Rank the goals for each value category below from 1 - 4 for their importance to your community's values.

First name: _____
Age: _____
Gender: _____

VALUES & GOALS

Housing

- Existing rates of **home ownership** are preserved.
- Existing rates of **affordability** are preserved and enhanced.
- Future development offers a diverse mix of **housing types**.
- Participation in existing housing programs increases.

Jobs + Economy

- The number of **resident-owned small businesses** grows.
- Existing community and businesses **wealth and incomes** rise.
- Increase in businesses that are frequented by **Mattapan residents and visitors**.
- Increase **access to jobs** outside of and **employment opportunities** within the neighborhood.

Mobility

- Number of fatal and injury crashes decreased.
- Households with access** to rapid transit, bikeshare and carshare increases.
- Comfort and connectivity** of walking and biking access to civic centers within Mattapan increases.
- Commute time** via public transportation to job centers outside of the neighborhood is decreased.

People + Places

- Quantity and diversity of **public spaces** available grows and provides opportunities for people to gather.
- Access** to educational, civic and open spaces is increased.
- Preserve and strengthen** the existing culture and community.
- Identify and implement **placemaking** strategies to emphasize community identity.

Etap 2:

Individual Exercise

Instructions (15 mins)

- Select three "community improvements" that you would most like to see along major corridor as a result of development in your neighborhood.
- Select three "buildings" that you would most like to see along major corridor in your neighborhood.
- Tally your total points for both "buildings" and "community improvements". Keep in mind that the points for community improvements and points for buildings should be roughly equal.

NOTE: Higher densities have higher point values and may get you more of the community improvements that you want: parks, parking lots, affordable housing, commercial retail space, improved streets and sidewalks, etc.

Community Improvements

10	Affordable Housing Unit Housing: 10 Jobs + Economy: 10 Mobility: 10 People + Places: 10	60	Streetscape Improvements Housing: 60 Jobs + Economy: 60 Mobility: 60 People + Places: 60	120	Pocket Park Housing: 120 Jobs + Economy: 120 Mobility: 120 People + Places: 120	4	Off-Street Parking Housing: 4 Jobs + Economy: 4 Mobility: 4 People + Places: 4
----	--	----	---	-----	--	---	---

10 x + 60 x + 120 x + 4 x = Total Points

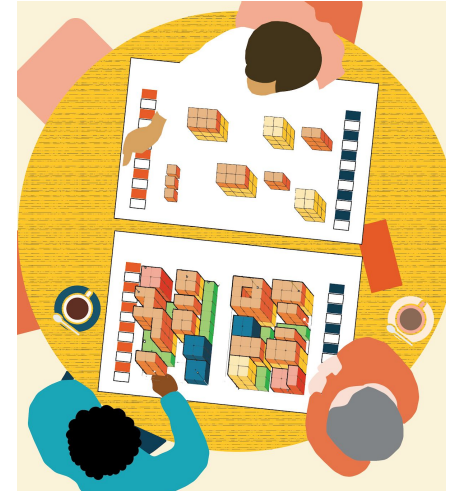
Buildings

60	Apartments with Commercial Housing: 60 Jobs + Economy: 60 Mobility: 60 People + Places: 60	3	Triplex/Duplex Housing: 3 Jobs + Economy: 3 Mobility: 3 People + Places: 3	1	Single Family or ADU Housing: 1 Jobs + Economy: 1 Mobility: 1 People + Places: 1	60	Commercial Improvements Housing: 60 Jobs + Economy: 60 Mobility: 60 People + Places: 60
----	---	---	---	---	---	----	--

60 x + 3 x + 1 x + 60 x = Total Points

PLAN: MATTAPAN - CORRIDOR WORKSHOP

Etap 3:



Ki sa mwen valè?

Kisa Mattapan bezwen?

Kisa Mattapan ta dwe sanble?
Kouman pou nou jwenn sa nou vle?

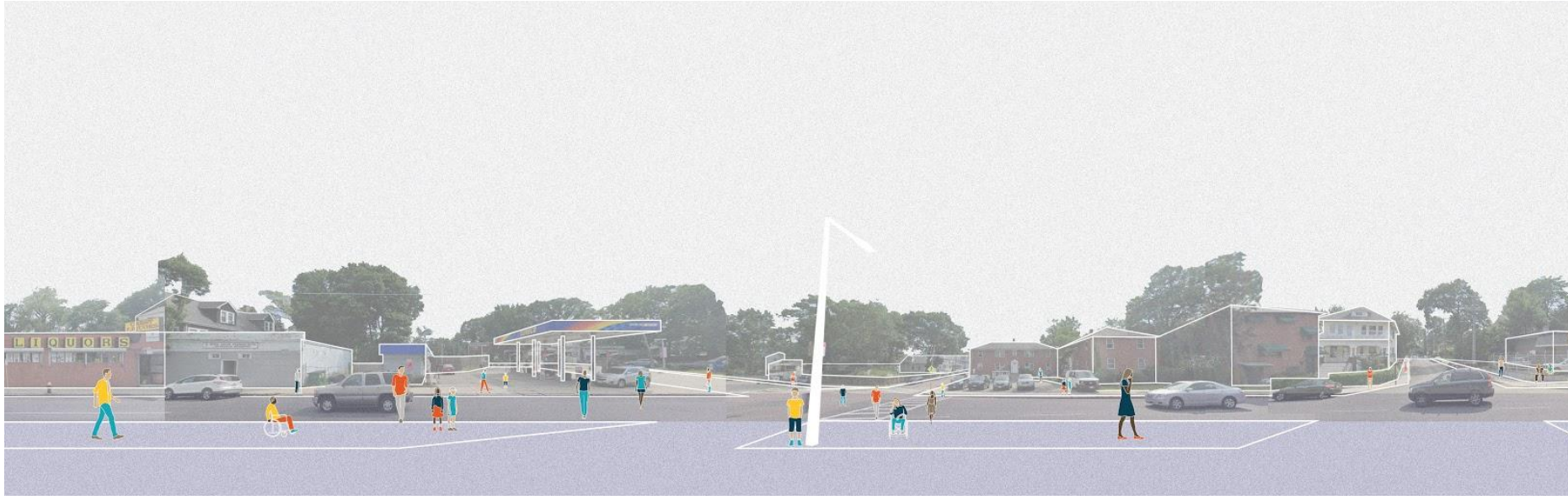
PLAN: Mattapan Focus Areas- Corridors

Koridò yo bay yon opòtinite pou re-imagjine devlopman a plizyè itilizasyon, amelyore transpòtasyon, ak aksè nan espas piblik dinamik yo.



Karaktè koridò - Morton Street







Karaktè koridò - Blue Hill Avenue



Zòn sijè yo ap ede òganize kontribisyon kominote a ak tradwi objektif pataje yo an rezilta mezirab pou Mattapan



Karaktè koridò - Blue Hill Avenue





Ki sa nou tande a

More mixed
unit housing
for single
adults to
save and get
back on their
feet

Loss of
neighborhood
equity when
seniors sell.
They then can't
afford to move
elsewhere.

Housing → risk
Single young
professionals

Affordable
housing

Community
land trust
to secure
homes affordability

0-5
Low income
Housing
parks

Ki sa nou konnen

- 58% nan Mattapan se lojman.
- Lojman yonsèl fanmi reprezante majorite lojman nan Mattapan.
- 38% nan rezidan yo se pwopriyetè kay.
- 3 sou 5 fanmi ki lwe kay konsidere kòm chaj lojman.
- Rezidan yo te eksprime enterè nan nouvo kalite lojman pou pi byen sèvi bezwen kominote a.
- 13% nan lojman Mattapan se revni limite.

Valè Kominotè

Sipòte devlopman enkliziv ekitab avèk yon anfas sou opòtinite lojman a bon mache.



PLAN: MATTAPAN

Objektif

- Konsève to pwopriyete ki egziste deja.
- Pousantaj/rapò a bon mache ki konsève ak amelyore.
- Pwochen devlopman ofri diferan kalite lojman.
- Patisipasyon nan ogmantasyon pwogram lojman ki egziste deja
- Lòt?



Ki sa nou tande a



Ki sa nou konnen

- Djòb ak biznis nan Mattapan aksesib nan diferan mwayen transpòtasyon.
- Pifò djòb ak biznis nan Mattapan konsantre sou gwo koridò yo.
- Sèlman 2% nan rezidan Mattapan yo ap travay nan katye a, 64% travay nan Boston, ak 34% travay andeyò Boston.
- Asistans sosyal ak swen sante konpoze 32% nan endistri yo nan Mattapan.

Valè Kominotè

Amelyore opòtinite pou biznis yo pwospere avèk yon konsantrasyon sou kaptire richès nan kominote a.

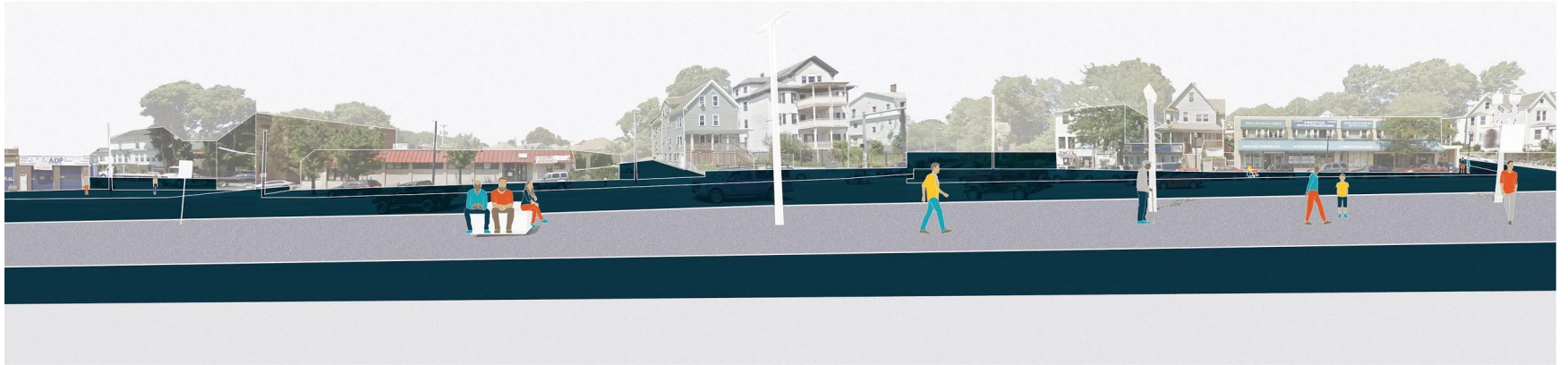
Travay kap vini ak Refleksyon pwofon Biznis - Me 2020

PLAN: MATTAPAN

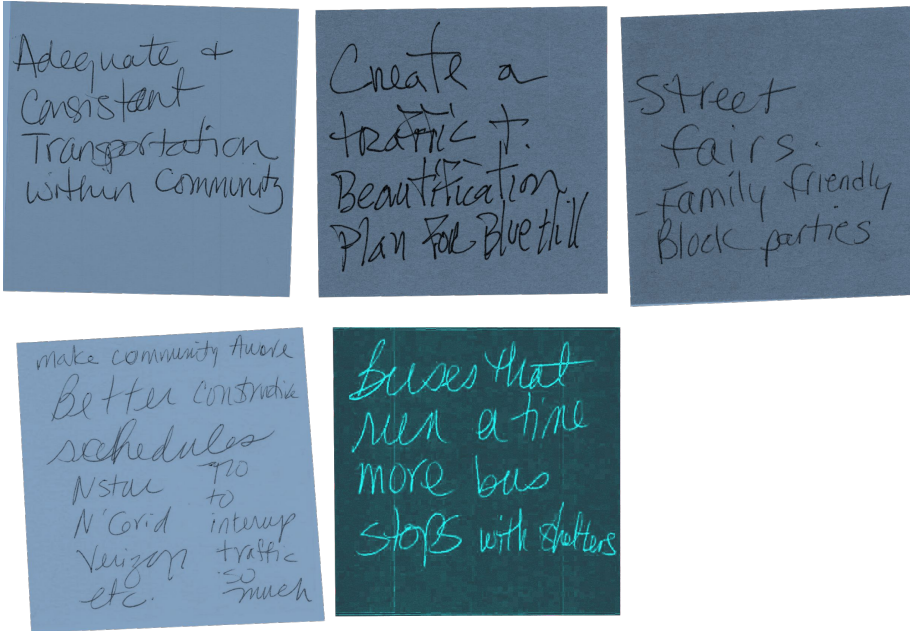


Objektif

- Kantite rezidan ki posede ti biznis yo grandi.
- Kominote ki egziste deja ak richès biznis yo ak revni kap ogmante.
- Ogmantasyon nan biznis vizitè ak rezidan Mattapan yo frekante.
- Ogmante aksè nan travay andeyò ak opòtinite travay nan katye a.



Ki sa nou tande a



Ki sa nou konnen

- Pran transpò souvan enplike omwen yon transfè
- Liy Fairmount lan ka itil lè ou prale anba lavil, men ou ka eksperimente anpil gwo reta.
- Atè ri prensipal yo te fè pati nan preske tout “vwayaj difisil”.
- Moun ki tap reponn yo te panse ke sèvis otobis ak kondwit la pa t fyab, e pifò pat santi yo ansekirite pou mache oswa monte bisiklèt.
- Estasyonman doub la ap pwopaje

Valè Kominotè

Ranfòse koneksyon,
grasa diferan mwayen,
nan Mattapan ak nan
rejyon an.



PLAN: MATTAPAN

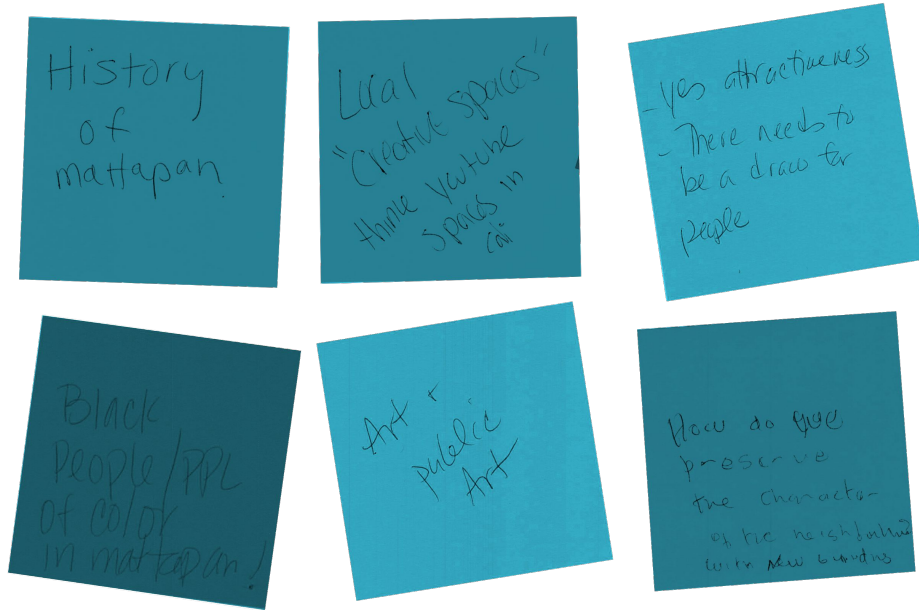
Objektif

- Kantite aksidan mòtèl ak frakti te diminye.
- Fanmi yo ki gen aksè nan transpò rapid, pataje bisiklèt, ak pataj veyikil ogmante.
- Konfò ak koneksyon nan aksè bisiklèt ak pyeton nan civic center nan direksyon Mattapan ogmante.
- Tan vwayaj nan transpò piblik pou ale nan sant djòb andeyò katye a te diminye.

**Pwochen Mobilite
Refleksyon Pwofon – 25
Mas**



Ki sa nou tande a



Ki sa nou konnen

- Mattapan se yon kominote divès, avèk 73% nan rezidan yo ki idantifye kòm Nwa oswa Afriken Ameriken.
- Mattapan gen pi gwo kantite popilasyon Ayisyen nan Boston.
- 17% nan itilizasyon teren Mattapan se espas lib ak 62% rezidansyèl

Valè Kominotè

Selebre idantite ak kilti
Mattapan ak fason li
kapab reflekte nan espas
kote moun yo rasanble.

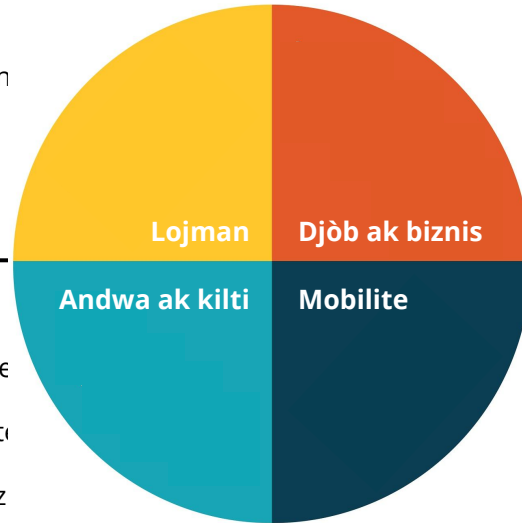


PLAN: MATTAPAN

Objektif

- Kantite ak divèsite espas piblik yo disponib grandi ak bay opòtinite pou moun yo rasanble.
- Aksè a edikasyon, espas sivik ak ouvè ogmante
- Konsève ak ranfòse kilti ak kominote yo ki egziste deja.
- Idantifye ak aplike estrateji plasman pou mete aksan sou idantite kominotè.

1. Konsève to pwopriyete ki egziste deja.
2. Pousantaj/rapò a bon mache ki konsève ak amelyore.
3. Pwochen devlopman ofri diferan kalite lojman
4. Patisipasyon nan ogmantasyon pwogram lojman ki egziste deja



1. Kantite ak divèsite espas piblik yo disponib grandi ak bay opòtinite pou moun yo rasanble
2. Aksè a edikasyon, espas sivik ak ouvè ogmante
3. Konsève ak ranfòse kilti ak kominote yo ki egziste deja.
4. Idantifye ak aplike estrateji plasman pou mete aksan sou idantite kominotè.

1. Djòb ak biznis nan Mattapan aksesib nan diferan mwayen transpòstasyon.
2. Pifò djòb ak biznis nan Mattapan konsantre sou gwo koridò yo.
3. Sèlman 2% nan rezidan Mattapan yo ap travay nan katye a, 64% travay nan Boston, ak 34% travay andeyò Boston.
4. Asistans sosyal ak swen sante konpoze 32% nan endistri yo nan Mattapan.

1. Kantite aksidan mòtèl ak frakti te diminye.
2. Fanmi yo ki gen aksè nan transpò rapid, pataje bisiklèt, ak pataj veyikil ogmante.
3. Konfò ak koneksyon nan aksè bisiklèt ak pyeton nan civic center nan direksyon Mattapan ogmante.
4. Tan vwayaj nan transpò piblik pou ale nan sant djòb andeyò katye a te diminye.

Etap 1:

Instructions (5 mins)

Rank the goals for each value category below from 1 - 4 for their importance to your community's values.

VALUES & GOALS

Housing

- Existing rates of **home ownership** are preserved.
- Existing rates of **affordability** are preserved and enhanced.
- Future development offers a diverse mix of **housing types**.
- Participation in existing housing programs increases.

Jobs + Economy

- The number of **resident-owned small businesses** grows.
- Existing community and businesses **wealth and incomes** rise.
- Increase in businesses that are frequented by **Mattapan residents and visitors**.
- Increase **access to jobs** outside of and **employment opportunities** within the neighborhood.

Mobility

- Number of **fatal and injury crashes** decreased.
- Households with access** to rapid transit, bikeshare and carshare increases.
- Comfort and connectivity** of walking and biking access to civic centers within Mattapan increases.
- Commute time** via public transportation to job centers outside of the neighborhood is decreased.

People + Places

- Quantity and diversity of **public spaces** available grows and provides opportunities for people to gather.
- Access** to educational, civic and open spaces is increased.
- Preserve and strengthen** the existing culture and community.
- Identify and implement **placemaking** strategies to emphasize community identity.

First name:
 Age:
 Gender:

Etap 2:

Individual Exercise

Instructions (15 mins)

- Select three "community improvements" that you would most like to see along major corridor as a result of development in your neighborhood.
- Select three "buildings" that you would most like to see along major corridor in your neighborhood.
- Tally your total points for both "buildings" and "community improvements". Keep in mind that the points for community improvements and points for buildings should be roughly equal.

NOTE: Higher densities have higher point values and may get you more of the community improvements that you want - parks, parking lots, affordable housing, commercial retail space, improved streets and sidewalks, etc.

Community Improvements

Affordable Housing Unit Points: 10	Streetscape Improvements Points: 60	Pocket Park Points: 120	Off-Street Parking Points: 4
--	---	-----------------------------------	--

10 x + 60 x + 120 x + 4 x = Total Points

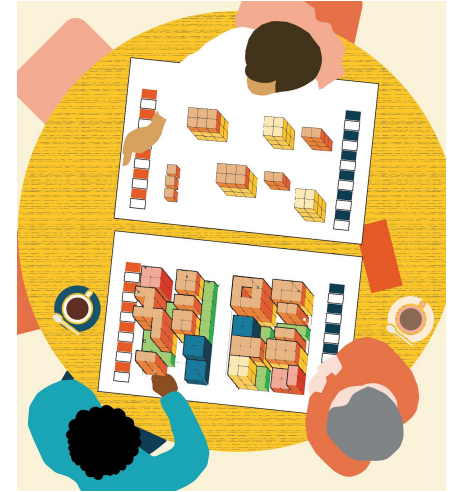
Buildings

Apartments with Commercial Points: 60	Triplex Duplex Points: 3	Single Family or ADU Points: 1	Commercial Improvements Points: 60
---	------------------------------------	--	--

60 x + 3 x + 1 x + 60 x = Total Points

PLAN: MATTAPAN - CORRIDOR WORKSHOP

Etap 3:



Ki sa mwen valè?

Kisa Mattapan bezwen?

Kisa Mattapan ta dwe sanble?
 Kouman pou nou jwenn sa nou vle?

Objektif aktivite ak rezilta

