

CROSSROADS INITIATIVE ROSE KENNEDY GREENWAY

Imagine The Possibilities



CREATING
COMMON
GROUND



Mayor Thomas M. Menino



CROSSROADS INITIATIVE ROSE KENNEDY GREENWAY

Connecting Boston's Neighborhoods

Realizing the Opportunities

MAKE CROSSROAD CONNECTIONS

- Link Greenway Parks and adjacent neighborhoods
- Realize unique contribution of Greenway through its east west connections
- Tie existing and proposed cultural destinations

CELEBRATE GATEWAYS

- Re-center the City on its Harbor
- Create landmarks at South Bay, North Station and Long Wharf

INTRODUCE THE GREENWAY AS A NEW 'COMMON GROUND'

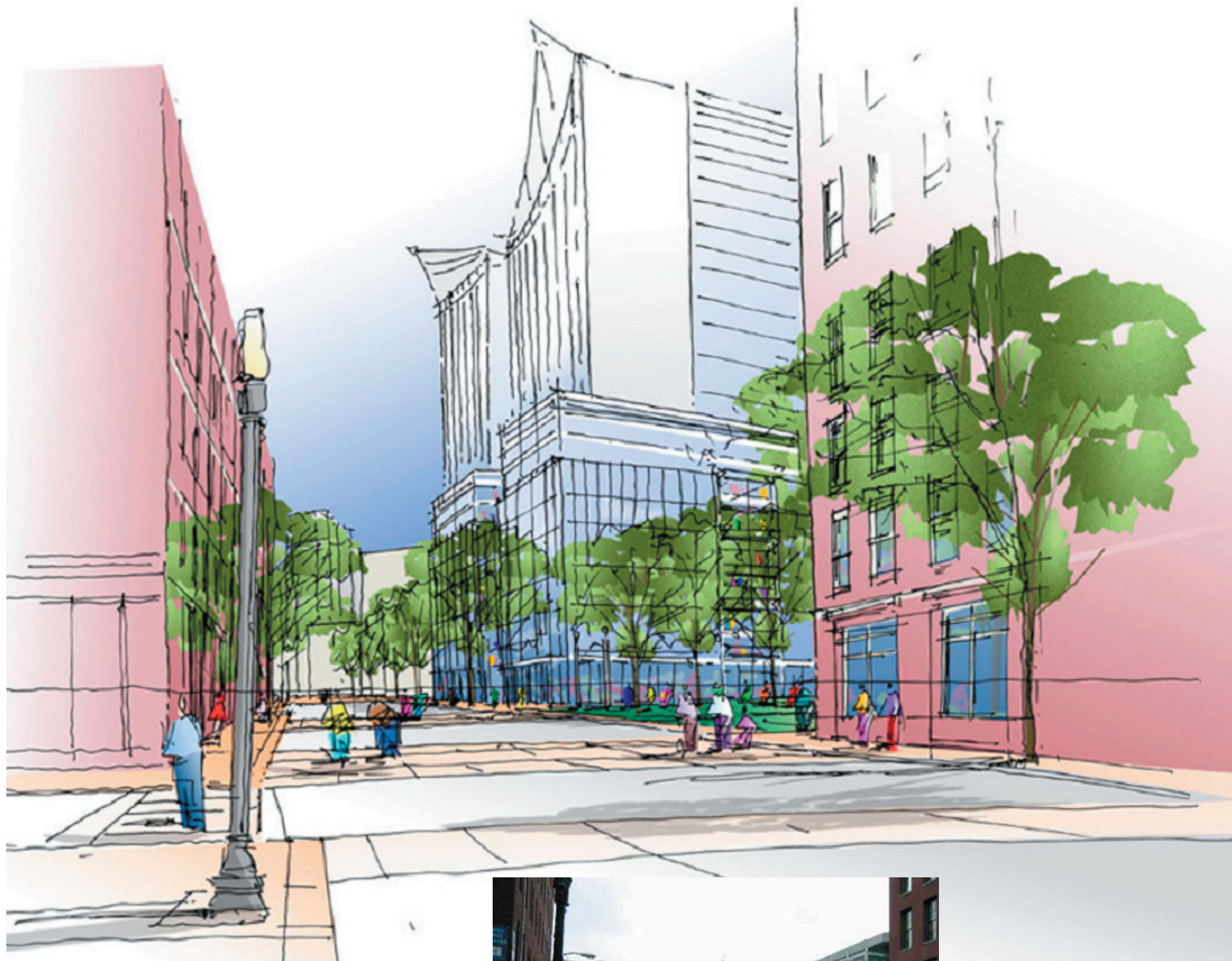
- Design a new center for Boston's social life
- Ensure year-round events and programs
- Create innovative, flexible and adaptive spaces that are inviting to all
- Highlight the distinctive character of the space and its unique districts



Get involved in shaping the Greenway
Contact: (617) 918-4402

CROSSROADS INITIATIVE ROSE KENNEDY GREENWAY

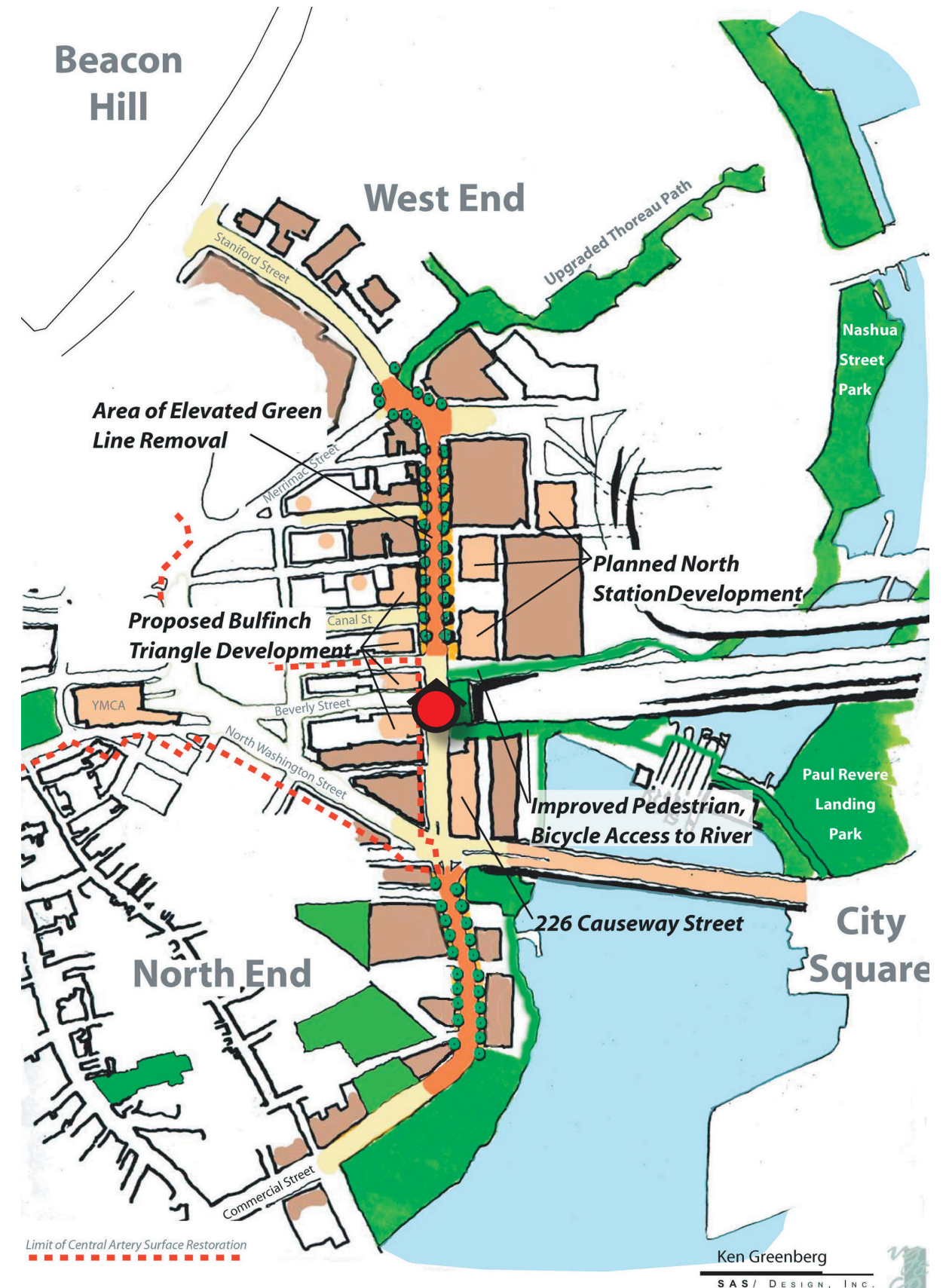
Causeway Street Connects West End & North End with North Station



Imagine the possibilities



Existing conditions



CROSSROADS INITIATIVE ROSE KENNEDY GREENWAY

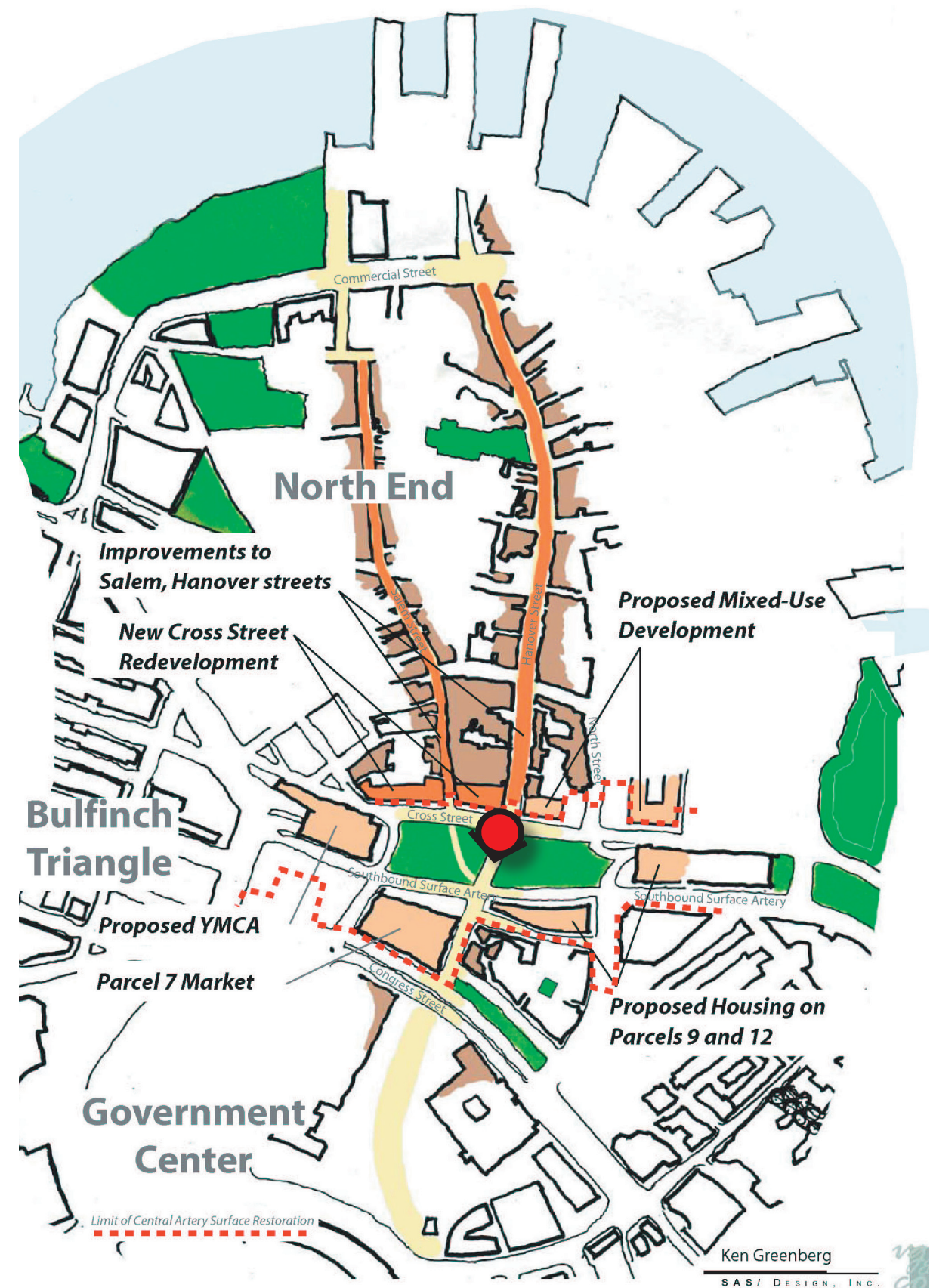
Hanover Street Connects North End & Greenway with Government Center & Freedom Trail



Imagine the possibilities



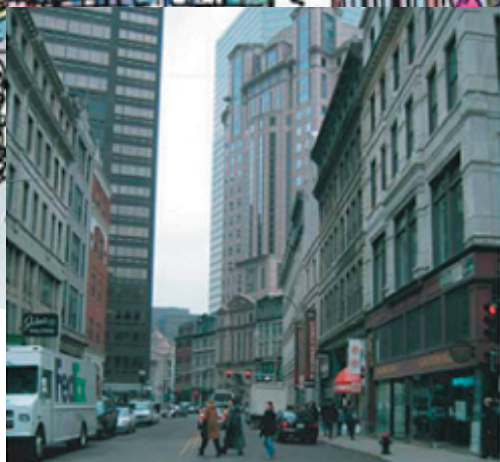
Existing conditions



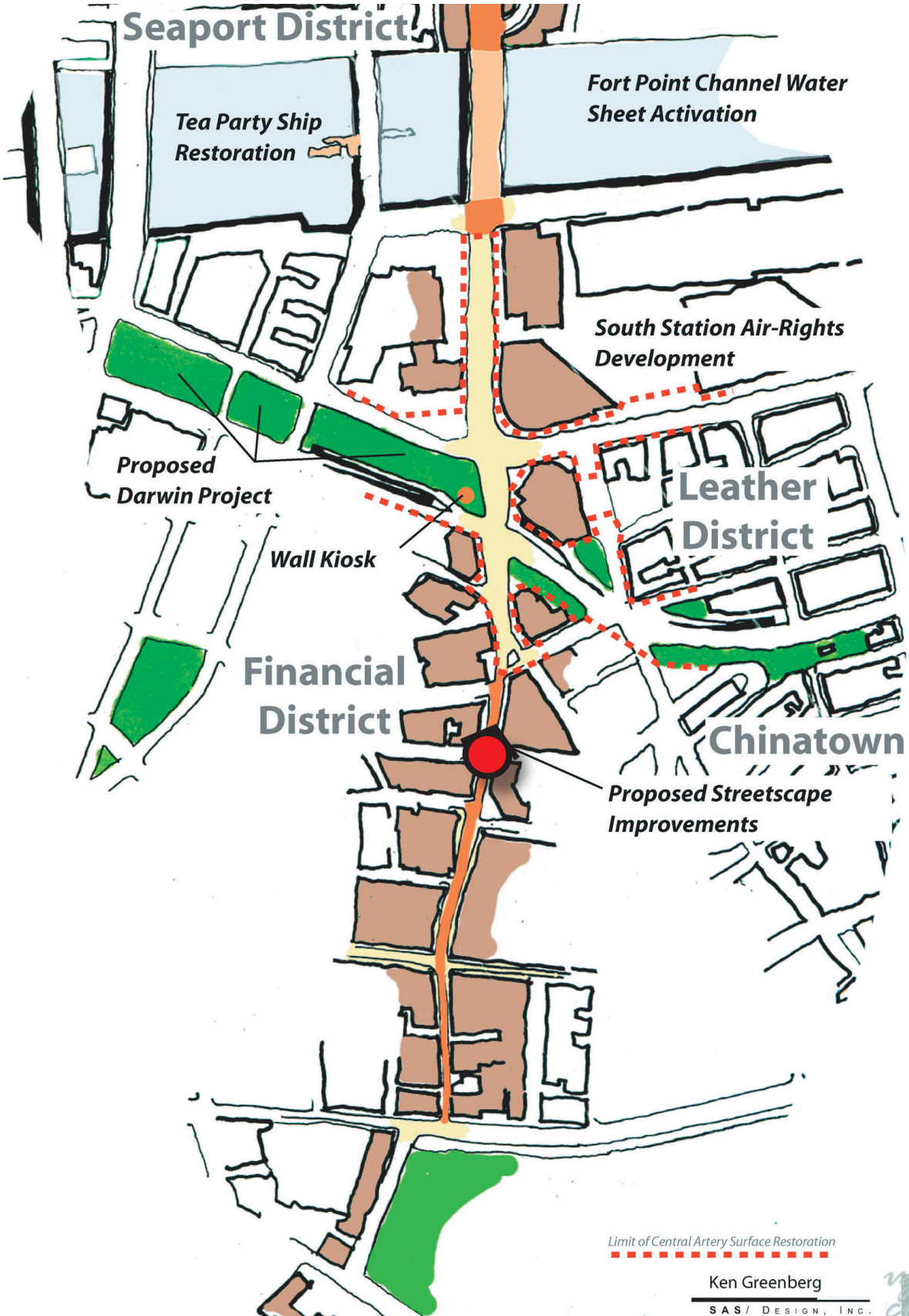
CROSSROADS INITIATIVE ROSE KENNEDY GREENWAY
Summer Street Connects Boston Common to Convention Center & Downtown Crossing



Imagine the possibilities



Existing conditions



CROSSROADS INITIATIVE ROSE KENNEDY GREENWAY

Broad Street Connects Old State House to Long Wharf



Imagine the possibilities



Existing conditions



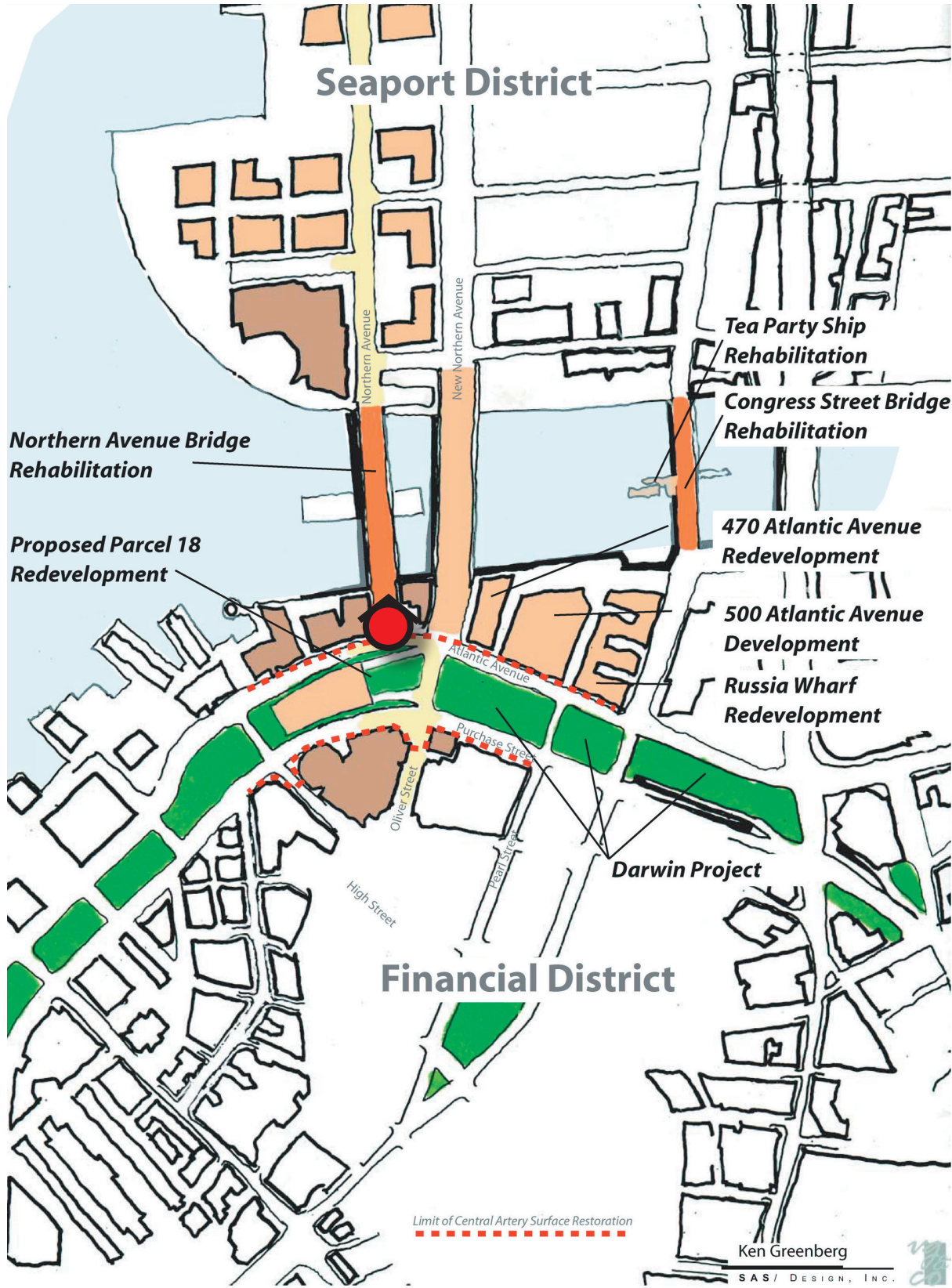
CROSSROADS INITIATIVE ROSE KENNEDY GREENWAY
Old Northern Avenue Connects Financial District to Seaport District



Imagine the possibilities



Existing conditions



CROSSROADS INITIATIVE ROSE KENNEDY GREENWAY
Beach Street & Essex Street Connect Chinatown, Leather District & South Station



Imagine the possibilities



Existing conditions

