

A NEIGHBORHOOD-WIDE DRAFT FRAMEWORK FOR COMMUNITY VITALITY

Allston-Brighton Community Plan Community Vitality Priorities

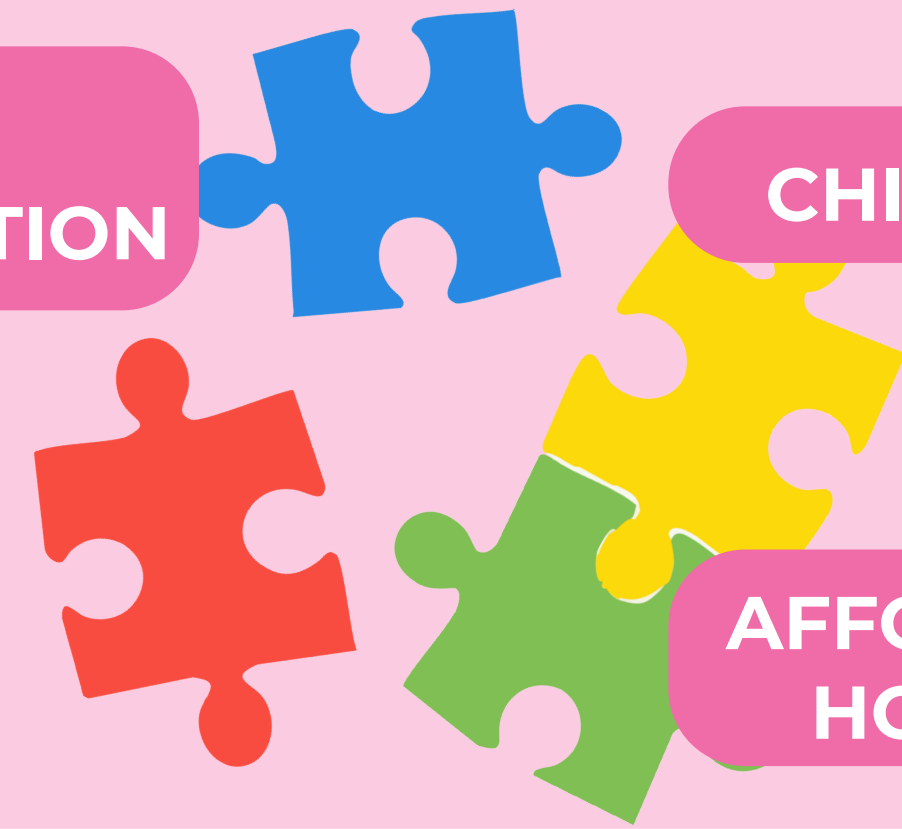
The Community Vitality Framework explores ways to help local artists and community groups stay in the neighborhood. This means making sure they have access to things like affordable housing, childcare, reliable transportation, and the spaces they need to gather, create, and share their work. This framework is not tied to specific locations within the neighborhood and will be built out more specifically as focus areas are developed.

RELIABLE
TRANSPORTATION

CHILDCARE

SHARED
SPACES

AFFORDABLE
HOUSING



Services & Organizations

Artists, Cultural Producers, and Front-Line Service Providers

Community Members

THE PLAYERS



THEIR NEEDS

A PLACE TO CALL HOME

...for artists and service workers near their jobs.

AFFORDABLE CHILDCARE

...to support a growing population of parents.

SPACES TO GATHER

...like a community center and affordable "third spaces."

WAYS TO GET AROUND

...for youth after school and seniors with disabilities.

SPACE TO MAKE SOUND

...to rehearse, record, and perform in the heart of Boston's music scene.¹



Community Members Have Said...

"Diverse grocery stores, new businesses, if there must be big buildings, I prefer [...] concentrating businesses, nightlife, etc. into one place [which] is convenient."

"Big community centers are needed in Allston-Brighton that can be booked by the community for small to medium sized gatherings, in the vein of the Cambridge Community Center."

"Allston/Brighton could use a community/cultural center (or two) as well as more accessible (cheaper, like not Roadrunner) small to midsize venues for live music and independent artists."

"More accessible places like urgent care, day centers for adults, integrated with non-English language services."

"I like the emphasis on affordable housing but am concerned how it will translate to reality."

"We need more artist and musician work/live/practice space to keep Allston's unique culture alive. It is important that we increase art spaces along Western Ave in Lower Allston."